

# Cedar Creek COTTAGE

Wide Body Travel Trailer



**The Smart Choice for the Experienced RV'er**









ORIGINAL CORIAN®  
COUNTERTOPS







- A** The large beautifully appointed main slide room boasts a 7-foot high ceiling for expanded living space.
- B** This model includes a convenient lunch bar as an added dining feature.
- C** Elegant True Corian® countertops and rich solid cherry wood cabinetry embellish the kitchen area.





Enjoy the comfort of your very own Cottage at your favorite vacation spot. The Cedar Creek Cottage offers the convenience of a travel trailer with the amenities of a fine vacation home. Its **wide body design** and **eight feet of interior height** provide roomy comfort for family and guests. Whether at the lake, in the mountains, or your favorite campground, your Cottage welcomes you with upscale features created to pamper and appease.





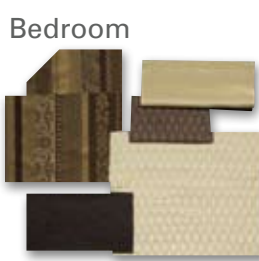
A



**DECOR OPTIONS**



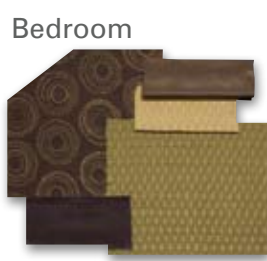
**COGNAC TAUPE**



Living Area



**SATIN SPRUCE**



Living Area



**OAK LEAF**



Living Area



**WHEAT TAPESTRY**



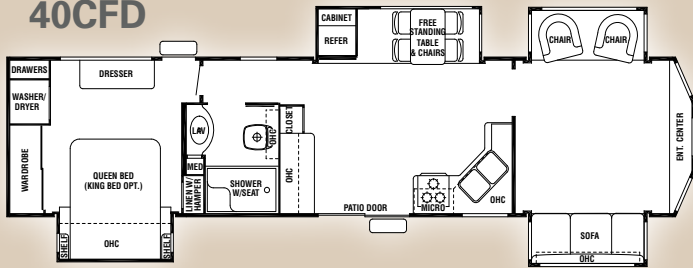
Living Area

**A** The bedroom slide accommodates a queen size bed that includes a deluxe Serta® mattress and large under bed storage area. The mirrored wardrobe, residential dresser, and lots of deep overhead cabinets provide plenty of personal storage space.

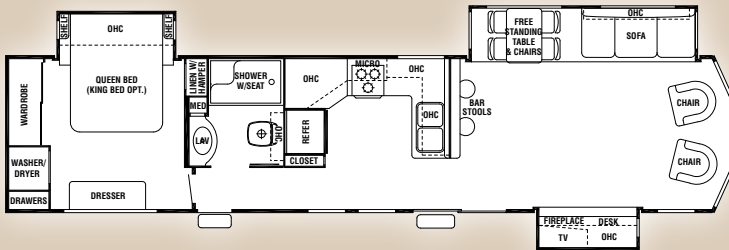
**B** The comforts of home are found in the roomy bathroom. The one-piece fiberglass shower includes a molded seat, curved shower door, and overhead skylight.



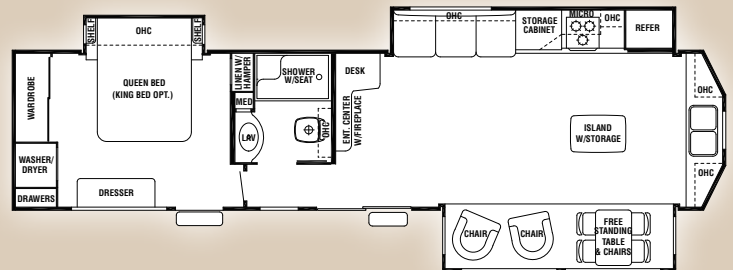
**40CFD**



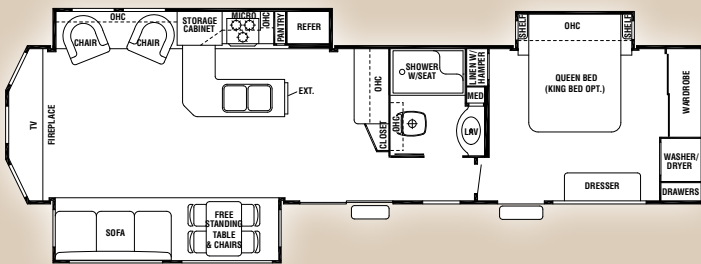
**40CFL**



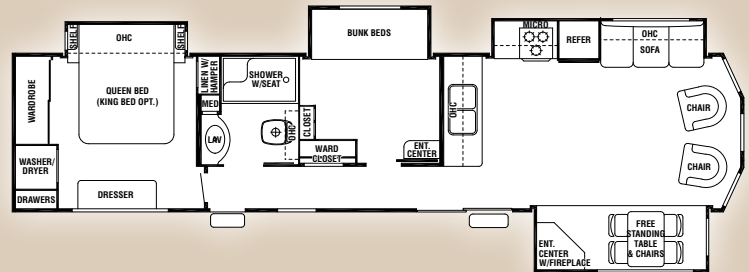
**40CFK**



**40CRL**



**40CB2**



Model	40CFD	40CFL	40CRL	40CFK	40CB2
Exterior Length	41'9"	39'6"	41'4"	40'4"	39'6"
Exterior Height w/Air Cond.	12'10"	12'10"	12'10"	12'10"	12'10"
Exterior Width	102"	102"	102"	102"	102"
Bedroom Interior Height	8'	8'	8'	8'	8'
Hitch Weight	2042	1371	1135	1732	1456
Axle Dry Weight	9030	8620	9340	9420	8852
Unloaded Vehicle Weight	11,072	9991	10,416	11,152	10,308
GVWR	14,042	13,371	13,135	13,732	13,456
Gross Cargo Capacity	2970	3380	2710	2580	3148
Dual Axles (2)	6000# Straight	6000# Straight	6000# Straight	6000# Straight	6000# Straight
Wheel Size	16 x 6	16 x 6	16 x 6	16 x 6	16 x 6
Tire Size	LT235/85R/16E	LT235/85R/16E	LT235/85R/16E	LT235/85R/16E	LT235/85R/16E
Awning Size	18'	18'	18'	18'	18'
Furnace Size	42 BTU	42 BTU	42 BTU	42 BTU	42 BTU
Water Heater Size	20	20	20	20	20
Demand Fresh Water Cap.	76	76	76	76	76
Black and Grey Water Cap.	40 / 40 / 40	40 / 40 / 40	40 / 40 / 40	40 / 40 / 40	40 / 40 / 40
Sleeping Capacity	6	6	6	6	6

**All Aluminum Super Structure**

**ROOF**

R-VALUE=38

**SIDE WALLS**

R-VALUE=9

**FLOORS**

R-VALUE=38

Emergency Roadside Assistance Service Administered by Coach-Net®. Ask your dealer for more information.

All Weights listed above are base weights. Weight capacities +/- 5%. NOTE: Model number of any particular unit does not necessarily reflect the overall length of the unit itself.



## Exterior Features

- #30 Gas Bottles with Bottle Cover & Automatic Change Over
- 102" Wide Body
- 16" Tires
- 30" Radius Door with Deadbolt Lock and Drip Cap with "Soft Top" Entry Storm Doors
- 65 Amp Power Converter
- 7' (84") Tall Slide-Outs
- 8' (96") Interior Height
- A Combination of Artwork Graphics and Automotive Paint for a Residential Exterior Look
- All Exterior Compartment Doors, Exterior Lights and Corners are Sealed with Butyl Rubber & Silicone - Proven to be the Best Sealant in the Industry - No Putty or Foam Tape
- Black Tank Flush
- Break Away Switch
- Cambered 10" I-Beam
- Cedar Creek's Famous All Aluminum Super Structure
- Convenient Single Access Phone Jack & Cable TV Connections
- Decorative Front Cap with Molded Picket Fence
- Detachable Hitch
- Enclosed and Triple Layered Insulated Underbelly (Calculated R-Value 38/80 Degree Ambient Temperature)
- Hitch Light
- Large Surface 12V. Heating Pads on All Holding & Fresh Water Tanks
- Large White Framed Dark Tinted Jalousie Clamp Ring Windows with Butyl Rubber Seals
- Lighted Entry Step
- Porch Light
- Radius Wrapped Bottom Metal Skirt
- Selector Switches for Slide-Rooms
- Single Access Fresh Water Fill & City Water Hook-Up with Lock
- Smooth, Easy Operating, Easy Grip, Entry Steps - Extra Wide for Confident Footing
- Tinted Safety Glass
- True Gelcoat Lockable Clamp Ring Exterior Baggage Doors with Thumb Grip & Door Catch
- UV Automotive Clearcoat Paint Coating is Placed on Refrigerator Vents to Prevent Premature Color Changes and Provides Superior UV and Weather Protection

## Interior Features

### Bedroom

- 8" Deep, Drawers in Main Bedroom area
- Bedroom Roof Vent
- Bedroom Slide - 60" x 80" Queen Bed 2 x 2 Finished Bed Base
- Braced & Wired for 2nd Air Conditioner
- Ceiling Mounted, Individually Switched, Overhead Reading Lights
- Large Capacity Storage Area Under the Bed
- Luxurious Bedspread which includes Elastic Mattress Grips
- Mirrored Closet Doors

- Solid Wood Dresser Top
- Solid Wood Shelves
- Swivel Mount TV Antenna with Power Booster
- Serta® Residential Mattress with Gas Lifts, Side Ventilation Windows, Designer Residential Style Headboard & Pillows
- Washer/Dryer Prep that Allows for Either Combination or Stack Washer/Dryer

### Kitchen

- 18 Cu. Ft. Refrigerator with Ice Maker (Ice Maker N/A on 40CFD)
- 30" Over the Range Microwave
- Congoleum® Diamondflor® Armorguard® Vinyl Floor Covering
- Crown Molding Complementing all Overhead Cabinets in Kitchen Area
- Entire Water Filtration System which Includes Tank and City Water - Even Your Shower Water is Filtered
- Free Standing Table with Hidden Table Leaf Extension and 4 Chairs with Hidden Storage
- Halogen Flat Ceiling Lights
- Hoosier Cabinet - (40CFD & 40CRL Only)
- Larger 74 Gallon Demand Water System
- Lazy Susan (Where Applicable)
- Pantry (Where Applicable)
- Residential Style Roller Drawer Guides with Travel Locks - No Binding
- Silverware Drawer
- Solid Cherry Drawer Fronts with Baltic Birch Sides and Ends Convenient 5" & 8" Sizes
- Solid Cherry Arched Cabinet Doors with Hardwood Cherry Styles
- Toe Kicks at the Base of the Kitchen Cabinet
- True Corian® Countertops with Deep Twin Stainless Steel Under-Mounted Sinks

### Misc. Appliances

- Fully Ducted 15,000 BTU High Output AC with Cold Air Returns that are also Braced and Wired for an Optional Ducted 2nd A/C
- 20 Gallon Water Heater
- 50 Amp Detachable Power Cord
- Carbon Monoxide Detector
- LP Gas Detector
- Single Digital Residential Style Thermostat for Heating and Cooling
- Smoke Detector
- 12V. Battery Disconnect
- Solid State 65 Amp Power Converter
- Suburban 35,000 (Minimum) BTU Furnace
- Wall Mount Monitor Panel
- Water Heater By-Pass System for Winterization

### Living Room

- Ceiling Fan with Light
- Create-A-Breeze Fantastic Fan with Thermostat and Rain Sensor in the Kitchen
- Dimplex® Fireplace - The World Leader in Electric Fireplaces
- Fluted Hardwood Main Slide Fascia Supported by Oak Columns and Post Pad at Carpet
- Main Slide-Room Height 7'
- Queen Ann Style End Table - Where Available

- Day/Night Shades
- Trackless Plush Pile Carpeting in all Living Room and Bedroom Areas
- TV Cable, Satellite, and Phone/Data Port Jack in Living Area
- Upgraded Lighting at Sofa and Decorative Overhead Dinette Light
- Valances with Curtains

### Bathroom

- 18" Tall Porcelain Toilet with Circular Flow Flush System
- Create-A-Breeze Fantastic Fan with Thermostat and Rain Sensor
- Designer Metal, 3 Tier Bath Towel Rack and Toilet Paper Holder
- Large Bathroom Mirror Medicine Cabinet with Overhead Make-Up Lights
- Radius, One-Piece Molded, Residential Style, Fiberglass Shower with Seat that Won't Deteriorate with Age
- Skylight over Tub
- Linen Closet
- Wall Switched Ceiling Lights in Key Locations

## Cedar Creek Cottage Explorer Package

(1) LCD Flat Panel, HD Television with Full Dolby Digital, Dolby Prologic, Surround Sound Stereo - DVD/CD/Tuner and MP3 Player, 30" Residential Microwave, Thermo-pane Patio Door, Hide-A-Bed Air Mattress Sofa, True Gelcoat Exterior, Black Tank Flush, SuperLube Bearing System, 20 Gallon Electric Water Heater, 15,000 BTU Air Conditioner, Fantastic Fan with Rain Sensor in Kitchen, 9100 Electric Awning, Entire Water Filtration System, Cedar Creek Switch Control Center, Winegard HD Ready Pre-Wire, Elegant Table Lamp

## Options

- Slide-Room Awning Toppers
- Penguin 2nd Air Conditioner
- Create-A-Breeze Fan/Power Lift, Thermostat & Rain Sensor in Bedroom
- Customized Decals - Customers can have their Family Name or their Home Town Displayed as a Graphic on the Cedar Creek Cottage Entry Tag
- King Size Bed Replacing Queen Bed with Shelves
- Beige La-Z-Boy® Leather Recliners (Where Available)
- Splendide Combination Washer/Dryer
- Splendide Stackable Washer/Dryer - Wired Individually to Allow Simultaneous Wash & Dry Cycles
- 30" Convection Oven with Cooktop
- Upgraded Rebound Carpet Pad
- ThermoPane® windows



A Berkshire-Hathaway Company



Scan this barcode using a QR Reader on your smart phone to learn more about Forest River.

Forest River, Inc. / 501 Hawpatch Road / Topeka, IN 46571

Ph: 260-593-2404 / Fax: 260-593-2447

Visit our website at [www.forestriverinc.com](http://www.forestriverinc.com)

DEALER

F-66-353 2010 Forest River, Inc. Litho U.S.A.

All illustrations and specifications contained in this literature are based on the latest product information at the time of publication. Forest River, Inc. reserves the right to make changes in prices, colors, materials, equipment and specifications at any time without notice and assumes no responsibility for any error in this literature. All units are shipped F.O.B. Topeka, Indiana. • CONSULT YOUR LOCAL DEALER FOR WARRANTY INFORMATION