



# BLUE RIDGE

*BY FOREST RIVER* FIFTH WHEELS

BLUE RIDGE FIFTH WHEELS  
BY FOREST RIVER



A Berkshire Hathaway Company



3025RL Front to back view shown with Cinnamon decor



AFFORDABLE LUXURY.

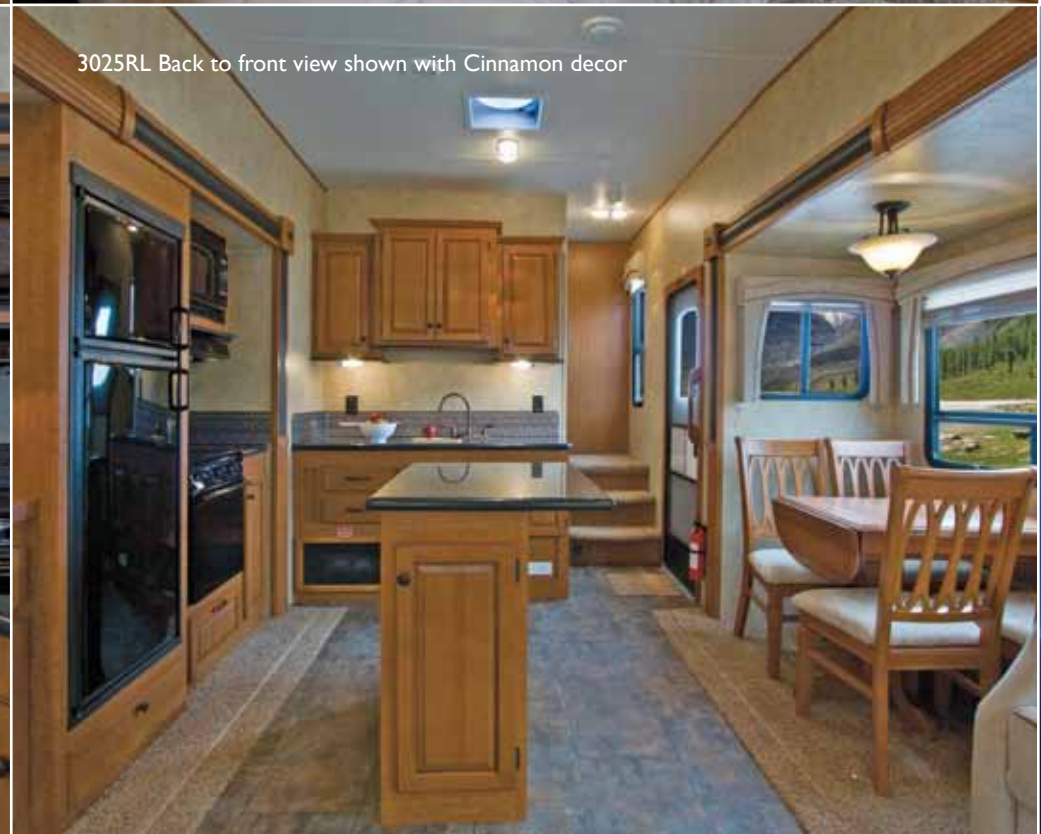
3025RL Bedroom with mirrored wardrobe



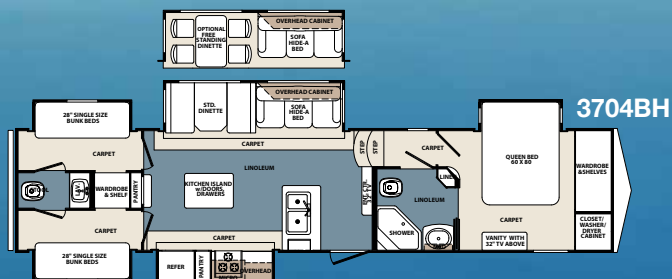
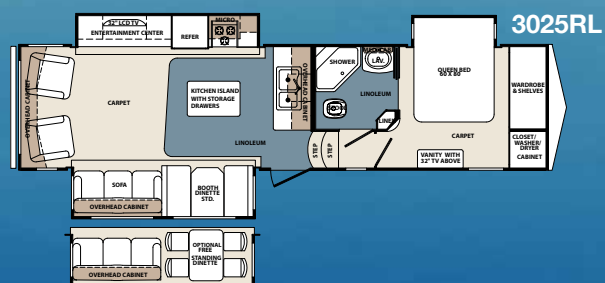
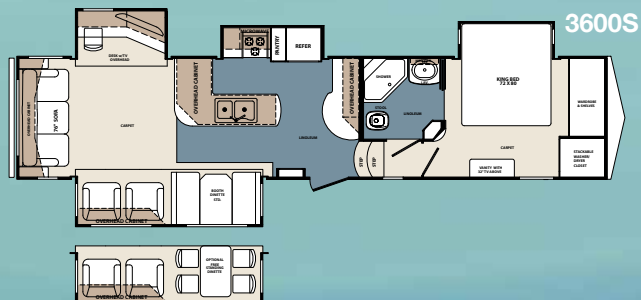
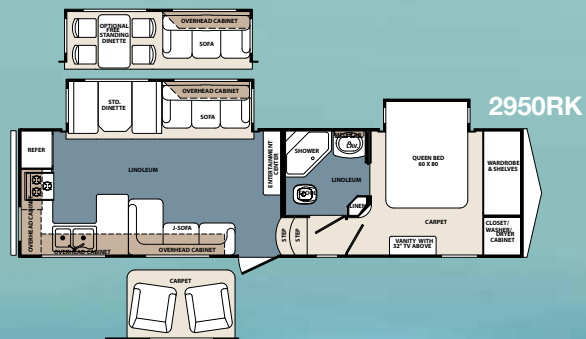
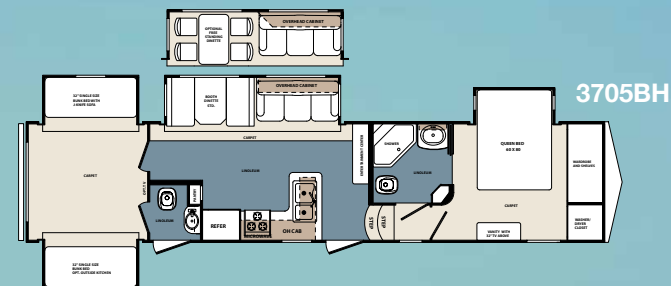
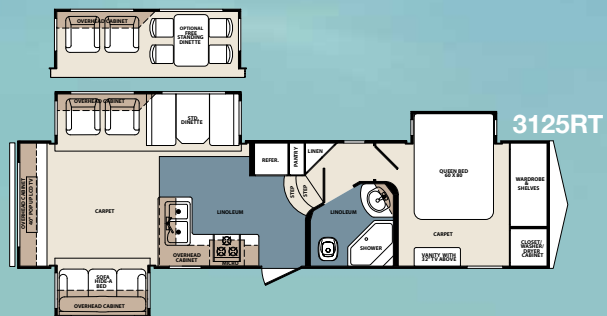
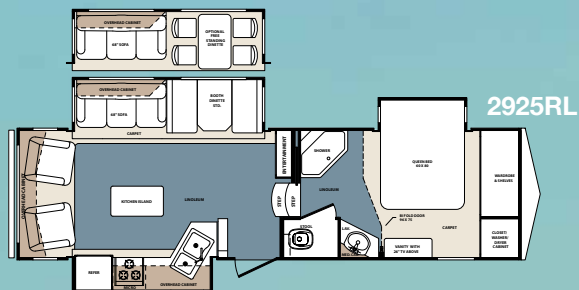
3025RL Entertainment area



3025RL Back to front view shown with Cinnamon decor



# FLOORPLANS



## BLUE RIDGE INTERIOR OPTIONS

### AUTUMN PAISLEY



### CINNAMON



### CAMEL



### PEBBLE



MODEL	Overall Length	UVW	Hitch Weight	GAWR	GVWR	Overall Height	Interior Height	Interior Height (living area)	Tire Size	Brake Size	Fresh Water	Waste Water	Patio Awning
2925RL	32' 6"	10230	2230	12000	14230	12' 6"	76 1/2"	102"	235/80R16E	12"	73 gal.	120 gal.	17'
2950RK	33' 2"	10334	2220	12000	14220	12' 6"	76 1/2"	102"	235/80R16E	12"	73 gal.	120 gal.	17'
3025RL	35' 6"	11259	2600	12000	14230	12' 6"	76 1/2"	102"	235/80R16E	12"	73 gal.	120 gal.	17'
3125RT	35' 2"	11079	1975	12000	13975	12' 6"	76 1/2"	102"	235/80R16E	12"	73 gal.	120 gal.	19'
3600RS	40' 3"	TBA	TBA	13680	TBA	12' 6"	76 1/2"	102"	235/80R16E	12"	73 gal.	120 gal.	19'
3704BH	40' 5"	12489	2230	13680	16230	12' 6"	76 1/2"	102"	235/80R16E	12"	73 gal.	160 gal.	17'
3705BH	40' 3"	TBA	TBA	13680	TBA	12' 6"	76 1/2"	102"	235/80R16E	12"	73 gal.	160 gal.	19'



# BLUE RIDGE

BY FOREST RIVER

## LIVING AREA

- Deluxe residential nylon carpet and pad
- Deluxe oil rubbed bronze hardware
- Raised panel hardwood cabinet doors
- Pleated day/night window shades
- HDMI cable for living area TV's
- Incandescent lighting
- Flush floor slideouts
- Residential cabinet construction w/ crown molding
- Overhead cabinet in main slideout
- Exit-assist grab handle
- La-Z-Boy® rocker recliners

## KITCHEN

- Dinette booth
- Beauflor® linoleum flooring
- Residential overhead cabinets with shelves
- Deluxe oil rubbed bronze plumbing fixtures and hardware
- Exterior exhausted, lighted range hood w/ fan
- LP leak detector
- Manual roof vent

## BEDROOM

- Serta® Dreamscape Mattress

## BATHROOM

- 2-piece ABS shower pan and surround
- Extra wide glass shower door
- Deluxe oil rubbed bronze plumbing fixtures and hardware
- Laminate lavatory countertop
- Residential size lavatory sink
- Medicine cabinet w/ mirrored door
- Beauflor® linoleum flooring
- Solid panel bathroom door w/ oil rubbed bronze handles
- Laundry chute (N/A 3125RT)
- Dual 28" x 74" bunk beds-3704BH Only
- 12v Exhaust Fan

## EXTERIOR

- Welded, aluminum framed, laminated 2" sidewalls
- Welded, aluminum framed, laminated front and rear walls
- Welded, aluminum framed, laminated slideout walls and roof

- Laminated thick floor
- 5" aluminum roof trusses
- 3/8" roof decking
- Block foam insulation in walls and floor
- High gloss gel coat colored fiberglass sidewalls and front cap
- 30" wide, 76" tall radius entrance door, with light
- Extended radius entry step
- Rubber roof
- Corrugated plastic underbelly
- Extra-wide front jacks w/ quick release pins
- Hydraulic actuated slideouts
- Selector switch for independent slideout actuation
- Patio light
- Attic vent
- Arctic insulation - R21 (floor), R14 (roof), R9 (sidewalls)
- 10" I-beam Z-frame (12" on 3704BH)

## UTILITIES

- 65 amp 12 volt converter
- 30lb LP bottles
- 35k furnace (42K on 3704BH)
- Heated & lighted exterior compartment
- Water purifier - whole house
- Command center with system controls and monitoring panel
- LP leak detector
- Carbon Monoxide detector

## OPTIONS

- Dinette & 4 chairs
- Wire & frame for 2nd A/C
- A/C 13500 BTU in bedroom
- Fantastic fan w/rain sensor in kitchen
- Fantastic Fan w/rain sensor in bedroom
- Heat pads for holding tanks
- Hehr® frameless dual pane windows
- Slideout awnings 2
- Slideout awnings 3
- Slideout awnings 5
- 32" HD TV-bedroom
- Carbon monoxide detector
- Water purifier
- RVIA
- Canadian stand Z240 seal
- Nebraska state seal
- Washington state seal

- Oregon state seal
- 2 recliners IPO J lounge (2950 ONLY)
- Fireplace (3025RL, 3125RT & 3704BH)
- Central vacuum system with powered dustpan
- Boat hitch
- Generator prep

## VALUE PACKAGE

### (MANDATORY OPTION PACKAGE)

- Wire & frame for 2nd A/C
- Fabric bedroom headboard
- (2) Bedside windows in slide-out
- 110v FM/CD/DVD w/surround sound
- RG-6 satellite prep
- 50 amp service
- 10 gallon DSI water heater
- Porcelain toilet
- Sky dome over tub
- 8' Large double door refrigerator
- Range cover
- Electric front jacks
- Fold away entry handle
- Rear roof ladder
- Black tank flush
- (2) patio scare lights
- Goodyear® spare tire & carrier in storage compartment
- Air mattress hide-a-bed sofa
- Heated enclosed under belly
- Outside shower
- Washer/dryer prep
- Power vent fan
- Ceiling fan
- 15,000 BTU A/C w/quick cool
- Deep tint safety glass windows
- Dexter E-Z lube axles
- Microwave- .9 cu ft w/trim kit
- 22" Oven with broiler
- High output range with automatic igniter
- Double sink with high rise faucet
- Water heater bypass
- Queen (60"x 80") innerspring mattress
- Dual reading lights over bed
- Digital TV antenna w/booster
- Extra large window with emergency escape

## DELUXE VALUE PACKAGE

### (MANDATORY OPTION PACKAGE)

- Front cap
- Drop frame pass thru storage
- 5 function Alta Remote (controls front and rear jacks, awnings, patio lights and slides.)
- Electric rear stabilizer jacks
- Lighted docking station (outside shower, black tank flush, water filter, gate valve controls, soap dispenser, paper towel holder, quick winterizing kit, water heater and fresh water by-pass valves, park cable, telephone & satellite (side mount) hookups)
- 12 Volt electric awning
- 32" HD LCD TV - living room (40" in 3125RT)
- Corian® solid surface kitchen counter tops
- Full extension drawer guides
- Cherry wood grain cabinets
- Mor-Ryde® rubberized suspension
- 16" Aluminum wheels with Goodyear® tires
- 12 Volt battery disconnect
- Deluxe refer panel front
- Upgraded slide-out Facia



Scan this barcode using a QR Reader on your smart phone to learn more about Forest River and our great products.

