



TRAVEL TRAILERS AND FIFTH WHEELS THAT ARE OUT OF THIS WORLD

SALEM

HEMISPHERE

TRAVEL TRAILERS AND FIFTH WHEELS THAT ARE OUT OF THIS WORLD





312QBUD with Slate Decor



Salem Hemisphere understands the importance of providing a quality, comfortable, value packed brand you can trust . With features such as stainless steel appliances, self-edge countertops, and oil-rubbed bronze hardware you'll love the look of our spacious interiors. Coupled with sensible, fun floorplans, such as our 312QBUD with optional campside kitchen (shown above right), Hemisphere by Salem provides an opportunity you can't pass up!





292RLSS with Heather Decor



“To each their own.”

Consumers like to have choices; that's what Hemisphere by Salem offers. Choose between Palisades (dark) and Fulton (light) Cherry mission-style cabinets, our Beau-flor ceramic tile linoleum (far left) and plankwood linoleum (shown above), and four designer decors that are sure to please even the most discriminate buyer. Our standard stainless steel kitchen package completes the professionally designed Hemisphere interior.



326BSTS Cathedral Slide with Slate Decor



Ingenuity drives success, and that's what helps keep Salem a step ahead of the competition. Hemisphere's 316TBRD Fifth Wheel (shown here) boasts a clever design that maximizes living area without sacrificing storage. Notice the cathedral slide, allowing in an abundance of natural light, it also increases headroom. With several practical floorplans to choose from, Salem Hemisphere helps make the decision easy from the start. Call or visit your nearest Hemisphere dealer today!



316TBRD Cathedral Slide with La-Z-Boy® Decor





292 RLSS with Heather Decor

FEATURES



Docking Station with Quick Winterizing Feature



Radius Triple Entry Steps



Folding Stove Cover for Increased Countertop Space



Full Extension Ball Bearing Drawer Guides



Beau-Flor Durabac Flooring



Smooth Fiberglass 30" Radius Entry Door



Pull Out Sprayer Faucet

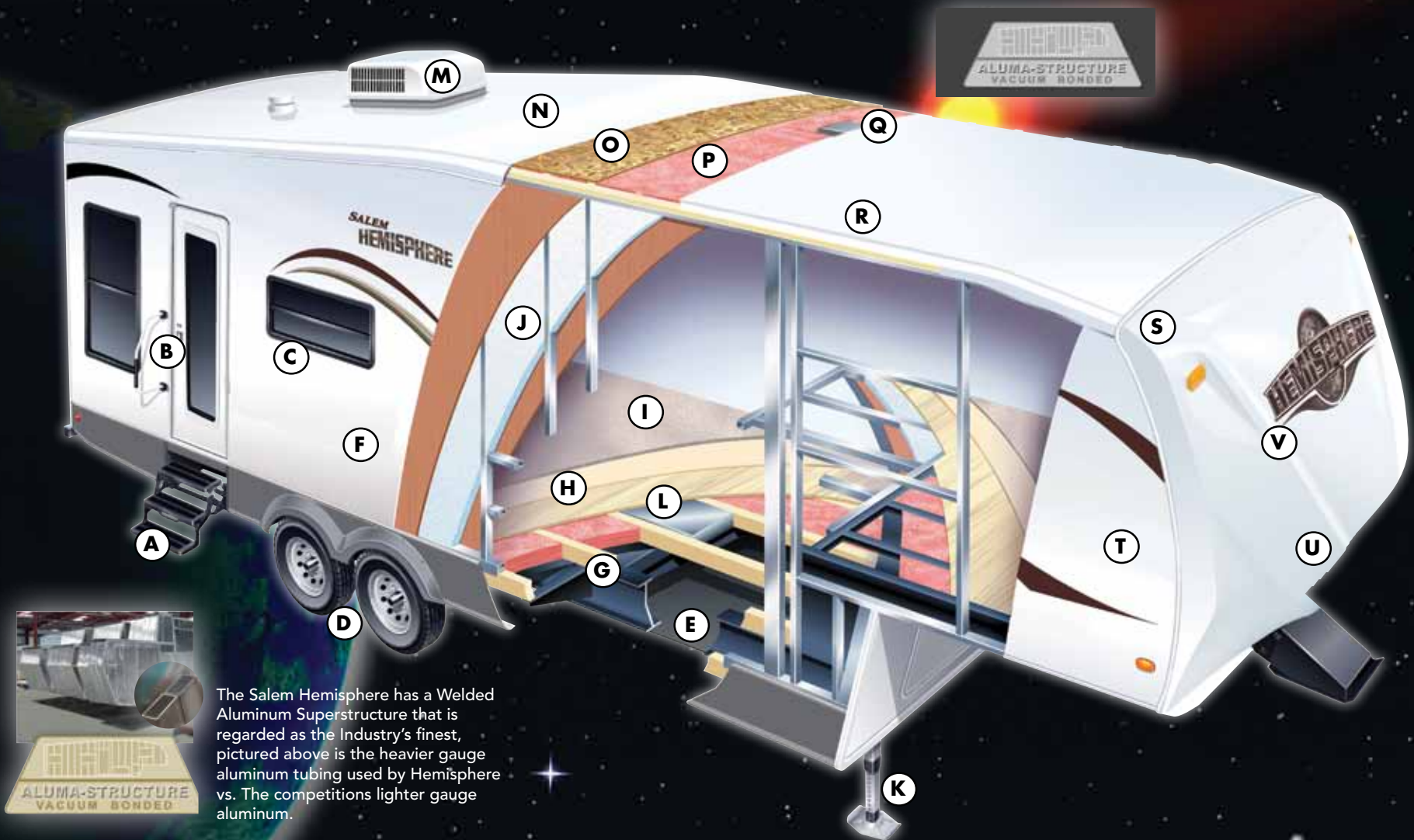


Jalousie Windows-Keeps the Elements Outside of your Unit



Dometic One-Touch Electric Awning

Construction



The Salem Hemisphere has a Welded Aluminum Superstructure that is regarded as the Industry's finest, pictured above is the heavier gauge aluminum tubing used by Hemisphere vs. The competitions lighter gauge aluminum.

- A. Main Triple Entry Steps
- B. Folding Entry Assist Handle
- C. Tinted Windows
- D. Ultra Lube Axles
- E. Heated and Enclosed Underbelly
- F. Laminated Vacuum Bonded Aluminum 2" Sidewalls
- G. 10" I-Beam Powder-Coated Frame with Cambered Chassis

- H. 5/8" Tongue & Groove Plywood Flooring
- I. Carpet w/ Padding
- J. R-9 Block Foam Insulation
- K. Power Front Jacks
- L. In-Floor Ducted Heat
- M. Ducted 13.5 K BTU Air Conditioning.
- N. Seamless Rubber Roof (12 yr. Warranty)
- O. 3/8" Roof Decking (Full Walk-On Roof)

- P. R-7 Fiberglass insulation Floor & Ceiling
- Q. Insulated Duct for Central Air STD. (all Models)
- R. 5" Truss Roof Rafters
- S. Front Fiberglass Cap
- T. Gel Coated Fiberglass Exterior
- U. Hitch Light
- V. 90 Degree Turning Radius Front Cap

Standards and Options

EXTERIOR AND CONSTRUCTION

- Aluminum-framed Vacuum-bonded Construction
- 2" Laminated Sidewalls
- 30" Smooth Fiberglass Radius Entry Doors (26" Secondary)
- Diamond Plate Rockguard (Travel Trailers)
- Swing Arm Entry Assist Handle
- Extra Large Full Pass Through Storage (per floorplan)
- Dometic™ One Touch Electric Awning (2 Yr. Warranty)
- Upgraded ABS Fender Skirts
- EZ-Lube Axles w/15" Tires
- Powder Coated I-beam Frame
- Cambered Chassis
- 2" x 3" Floor Joists 12" on Center
- Water Heater By-pass
- FW Docking Station
- Seamless Holding Tanks
- Power Slide-Out Systems (Flush Floor)
- 16 Gal. per hour Quick Recovery D.S.I. Water Heater (2 Yr. Warranty)
- Stabilizer Jacks
- Power Front Jacks (Fifth Wheel Only)

KITCHEN

- Dometic® Double Door Refrigerator (2 Yr. Warranty)
- Deep Basin Stainless Steel Residential Sink
- Sink Cover (1)
- Microwave with Carousel (1 Yr. Warranty)
- Pull-Out Sprayer Faucet
- 3-Burner, High Output Range (2 Yr. Warranty)
- Range Hood with 12-Volt Exhaust Fan and Light
- Beau-Floor™ Durabac Flooring (2 Yr. Warranty)
- Solid Wood Drawer Fronts w/Full Extension Ball Bearing Glides
- Solid Wood Shaker Style Cabinet Doors
- Large Overhead Cabinets
- Wall-Mounted Systems Monitor Panel

- Oil Rubbed Bronze Hardware
- Knife Rack (behind cooktop)
- Self Edge Countertops

LIVING AREA

- 69" Interior Slide Height
- 80" Interior Height (84" FW)
- 13,500 BTU Ducted Roof Air Conditioner w/Quick Cool (2 Yr. Warranty)
- Swivel Rocker(s) (per floorplan)
- 44" Oversized Dinette
- Solid Wood Drawers Fronts w/Full Extension Ball Bearing Glides
- Extra Large 48" U-Dinette (Select Floorplans)
- Large Dinette Picture Window
- TV Antenna and Booster
- 26" LCD TV with DVD
- Cable TV and Satellite, Prep
- Extra Large Overhead Cabinets
- Decorative Wall Light
- 30 or 35K BTU Suburban Forced Air DSI Furnace (2 Year Warranty) with Thermostat
- In-Floor Heat Ducting
- Drawers on Each Dinette Base
- Night Shades
- Sky Lights in Slide Outs (Select Floorplans)

BEDROOM

- Strut Lifted Storage Area under Bed
- Oversized Bunks (most models)
- Solid Bedroom Privacy Doors (Most Models)
- Mirrored Wardrobe with Large Drawers
- Bunk rated to 300 Lbs.

BATHROOM

- Glass Shower Door (Neo-angle Showers)
- 12-Volt Power Bath Roof Exhaust Vent
- Wooden Medicine Cabinet with Mirrored Door

- Thetford® China Foot Flush Toilet
- Tub Surround

SAFETY

- LP Leak detector
- Smoke Detector
- Carbon Monoxide Detector
- Fire Extinguisher
- Hitch Light
- Amber Patio Light
- Welded Heavy Duty Safety Chains (Travel Trailers)
- Electric Brakes (all wheels)
- GFI Receptacles
- ANSI 119.2
- Certified to Meet National Highway Traffic Safety Administration Specifications

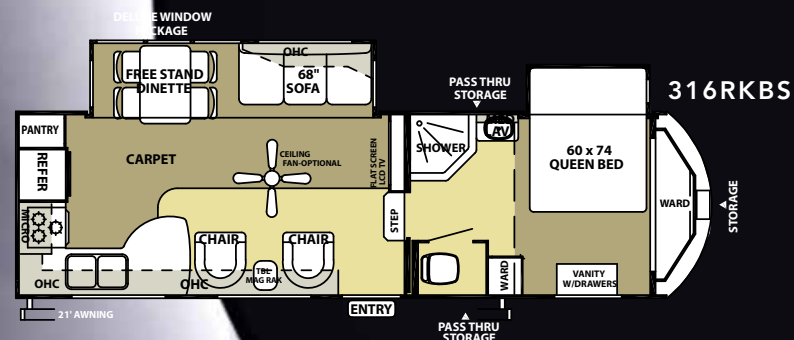
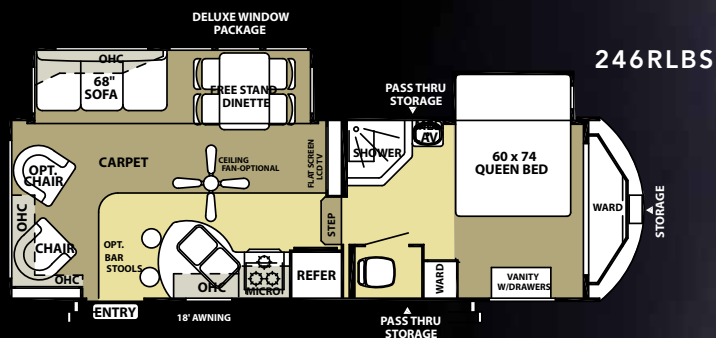
POPULAR OPTIONS

- Free Standing Dinette w/4 Chairs
- Living Room Ceiling Paddle Fan (5th Wheel Models)
- Roof Ladder
- Safety Glass Tinted Windows
- Extra Large 8 cu ft Double Door Refrigerator
- 15,000 BTU Ducted A/C w/Quick Cool
- Outside Shower
- Double Air Hide-A-Bed Sofa
- Twin Hide-A-Bed Sofa (U-Dinette Models)
- Skylight over Tub
- Palisades Cherry or Fulton Cherry Cabinets

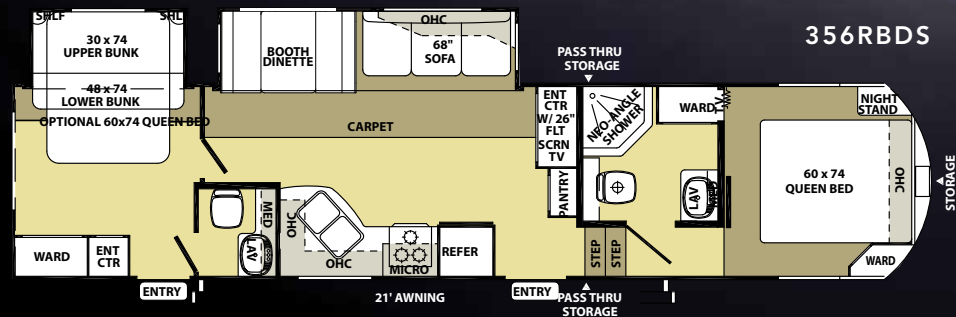
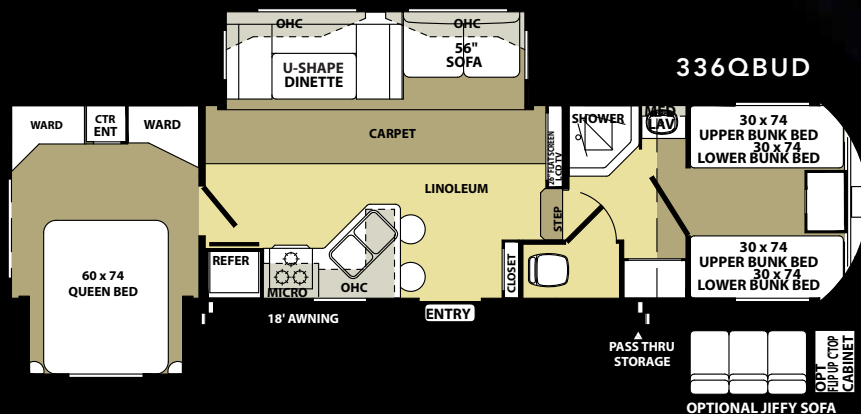
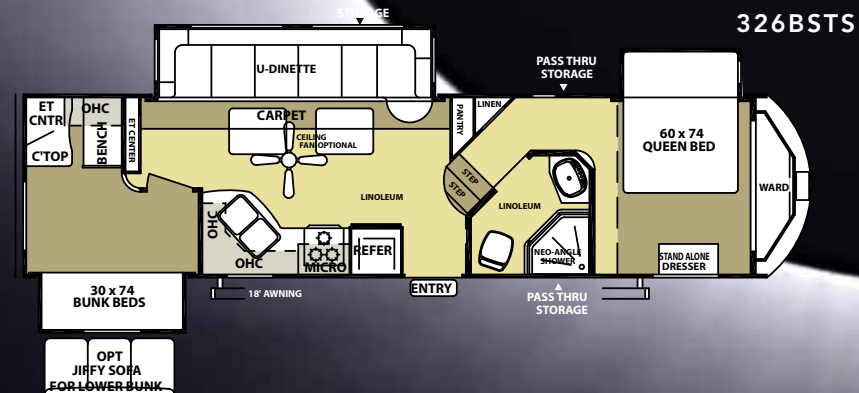
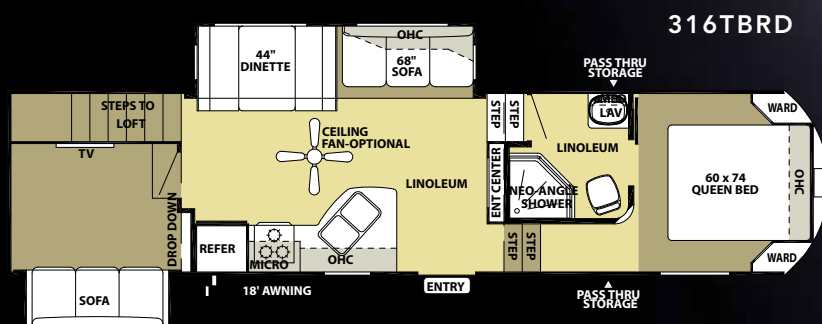
Contact your Salem dealer for a complete list of options



FIFTH WHEEL FLOORPLANS

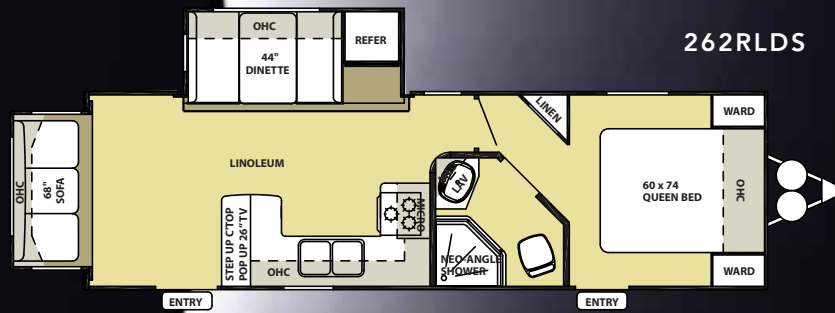


CATHEDRAL SLIDE FIFTH WHEEL FLOORPLANS

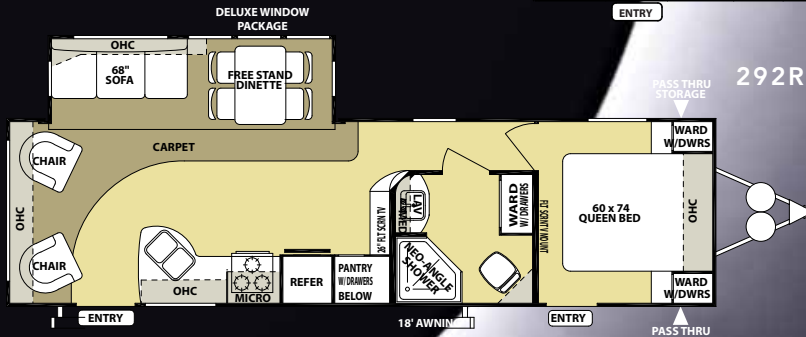


262RLDS

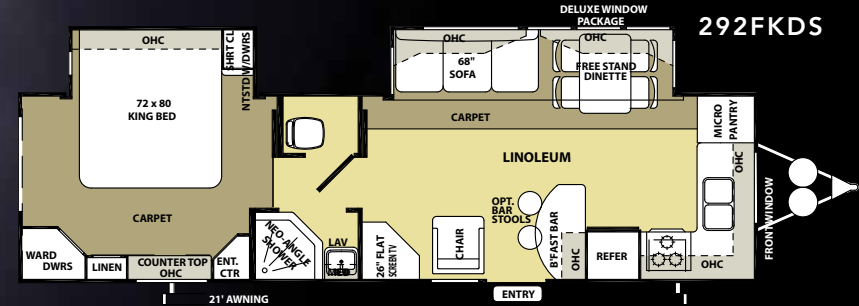
TRAVEL TRAILER FLOORPLANS



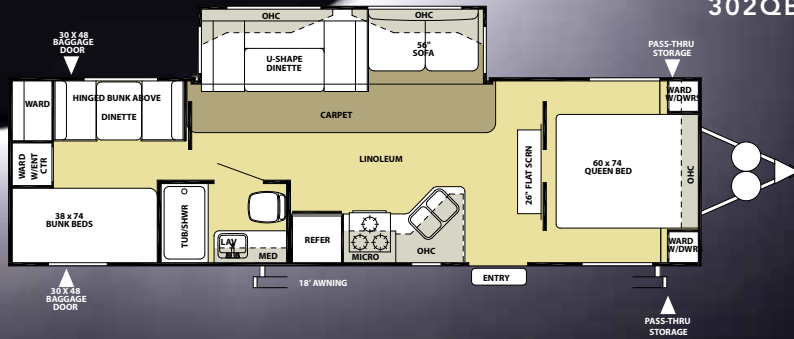
292RLSS



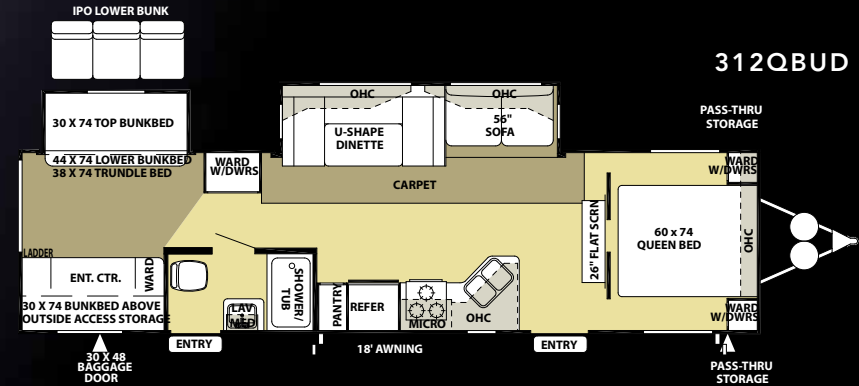
292FKDS



302QBUD



312QBUD



MODEL	246RLBS	316RKBS	316TBRD	326BSTS	336QBUD	356RBDS	262RLDS	292RLSS	292FKDS	302QBUD	312QBUD
Hitch Weight (lb)	900	1575	1490	2255	1635	1420	NEED	810	1125	845	820
Axle Weight	6560	6765	8195	7350	7363	7860	6547	6425	6547	6300	7235
Dry Ship Weight	7460	8340	9545	9605	8998	9280	6609	7235	7672	6945	8055
GVWR	11060	11735	11510	12415	11795	11580	11285	10970	11285	11005	10980
CCC (Cargo Capacity)	3541	3336	1906	2751	2738	2240	3554	3676	3554	3801	2865
Ext Length	28' 6"	31' 0"	36' 7"	36' 3"	35' 0"	38' 2"	33' 10"	34' 2"	33' 10"	33' 6"	35' 6"
Ext Height	12' 2"	12' 2"	12' 4"	12' 4"	12' 2"	12' 2"	11' 1"	11' 1"	11' 1"	11' 1"	11' 1"
Int Height	84"	84"	84"	84"	84"	84"	80"	80"	80"	80"	80"
Fresh Water Cap (gal)	42	42	42	42	42	42	42	32	42	42	42
Black Water Cap (gal)	32	32	34	34	32	64	32	32	32	32	32
Grey Water Cap (gal)	35	64	69	69	64	64	64	35	64	64	64
Tire Size (in)	15"	15"	15"	15"	15"	15"	15"	15"	15"	15"	15"
Awning Size (ft)	18'	18'	20'	18'	21'	21'	21'	18'	21'	18'	18'

JOIN THE SALEM FAMILY

**CRUISE
LIFE
SALEM**



SALEM



SALEM



**SALEM
HEMISPHERE**



**SALEM
HEMISPHERE**



Vista



SALEM



SALEM



Forest River Encourages You to Buy Locally

Forest River, Inc. strongly encourages our retail customers to purchase from their local dealership whenever possible due to the following factors:

- Our Dealers are as a rule, independently owned and operated businesses. Outside of those customers they personally sold products to, they are not contractually obligated to perform warranty service on Forest River products that were purchased elsewhere. There may be an occasion that you would be required to return to the point of purchase to satisfy warranty requirements.
- Although many dealerships will eventually service products not purchased at their place of business, they will usually take care of their customers and other Forest River customers who are traveling away from their local dealer as they would their own.
- Local purchases allow a customer to establish a relationship with a dealer close to home. This relationship provides the customer with a convenient location for service and support from a "home town" professional.
- The opportunity for a thorough PDI (Pre Delivery Inspection) and product orientation is an additional benefit of buying from your local dealer. Further providing the opportunity for refresher courses or the ability to get questions answered much more conveniently.
- For our Canadian customers, there are also requirements which must be met to bring an RV purchased out of the country to their home. Although not insurmountable, these requirements may involve such things as additional inspections and certifications, taxes and fees. Your local Canadian Dealer is a professional at meeting these requirements.

Forest River's goal is for all RV Owners to fully enjoy their RV experience. In light of this goal, and considering the advantages of buying local, we encourage you to be thorough when determining what product to purchase and which dealer to purchase it from as both are key to your ultimate satisfaction and the realization of your dreams.

YOUR HEMISPHERE DEALER

PEACE OF MIND.

Forest River has yet another exclusive feature to offer: One year of free roadside assistance will be given to every new Salem Hemisphere customer. This is just one more way to say "Thank you" and to ensure an enjoyable traveling experience.



Interior Color Options



La-Z-Boy Interior



Slate Interior



Nutmeg Interior



Heather Interior

90° Degree Turning Radius



Forest River, Inc.
55470 C.R. 1
Elkhart, IN 46514
(574) 389-4600
www.forestriverinc.com
www.forestriveraccessories.com

All specifications contained herein are based on the latest product information at time of printing. Forest River reserves the right to make changes in colors, materials, equipment and specifications at any time without notice and assumes no responsibility for any errors in this brochure. PIP 041808