



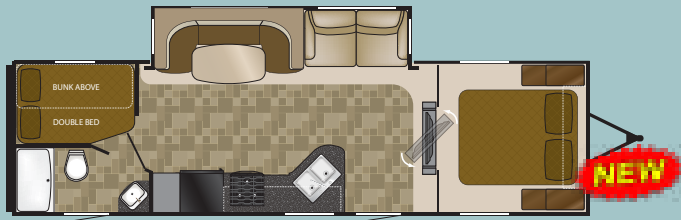
Genuine Livability,
Unmatched Quality.



NORTH COUNTRY
BY HEARTLAND

Visit HEARTLAND on:



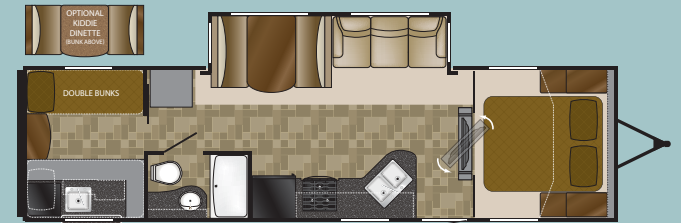


NC 28BHSS

Length: 32' 6"
Height: 11' 5"
Dry: 7,201
Hitch: 911

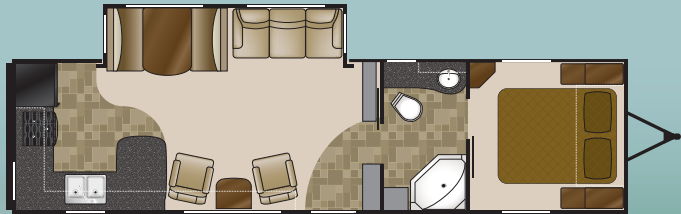


Beach



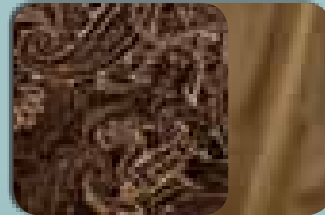
NC 30BHSS

Length: 33' 10"
Height: 11' 5"
Dry: TBD
Hitch: TBD

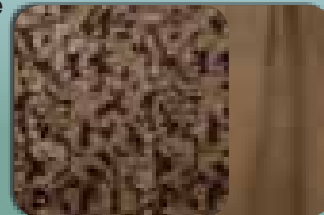


NC 29RKS

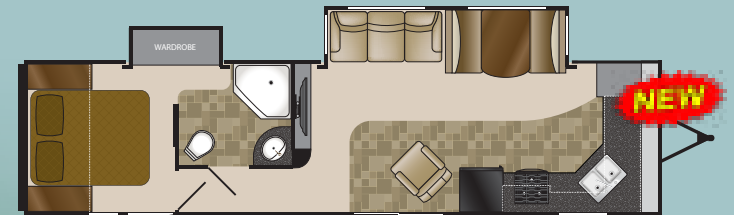
Length: 34' 11"
Height: 11' 5"
Dry: 7,534
Hitch: 748



Eclipse

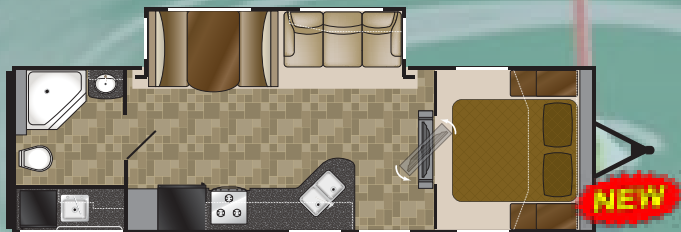


Mulberry



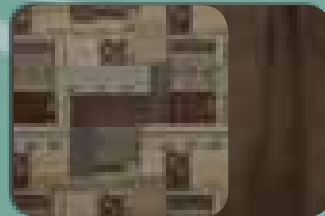
NC 30FKSS

Length: TBD
Height: 11' 5"
Dry: TBD
Hitch: TBD

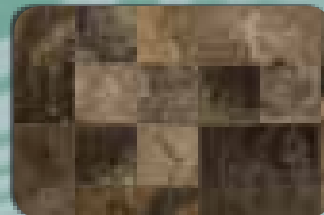


NC 29ODK

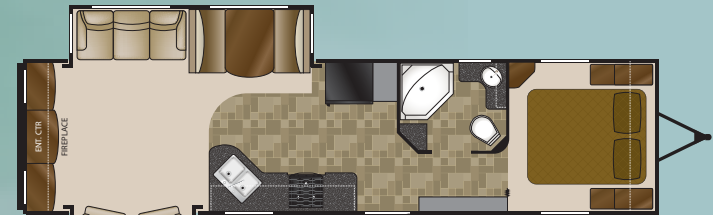
Length: 30' 10"
Height: 11' 5"
Dry: TBD
Hitch: TBD



Mocha

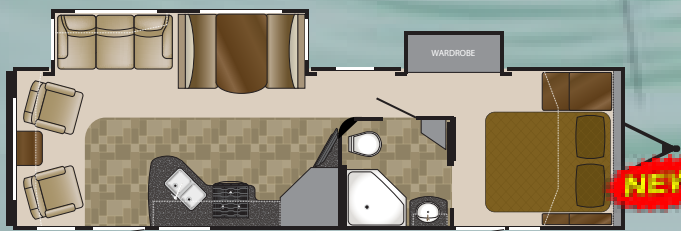


Flooring



NC 31RETS

Length: 34' 6"
Height: 11' 5"
Dry: 8,418
Hitch: 674

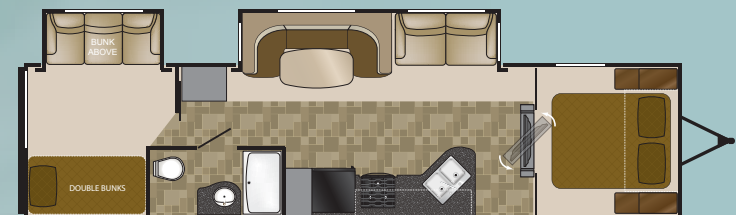


NC 29RLSS

Length: 32' 11"
Height: 11' 5"
Dry: TBD
Hitch: TBD



Flooring opt Beauflor



NC 32BHDD

Length: 37' 2"
Height: 11' 5"
Dry: 8,766
Hitch: 1,070



Construction Features

- .024" Aluminum Exterior Skin
- R-7 Fiberglass Insulation
- Sidewall, Roof, and Floor
- 5/8" Main Floor Decking
- Roof Rafters
- Wood Tapered 4-1/2" Trusses
- 1/2" Dinette, Bed and Bunk Platforms
- Unique Aerodynamic Radius Front Profile
- Wall Studs on 16" Centers
- Electric-Powered Slide Rooms (all slide-out models)
- Prep for Rear Ladder
- Fully Walkable Roof w/ 3/8" Decking
- One-Piece, Seamless Rubber Roof
- 8' Exterior Width
- 84" (7ft.) Interior Ceiling Height
- 71" (6ft. 1in.) Slide-Room Ceiling Height
- 2" x 3" Longitudinal Floor Joists on 16"-18" Centers
- Cambered Structural Steel I-Beam Frame

Heat, Air ,Power and Water Equipment

- Hook-Up for City Water
- Systems Monitor Panel
- 12V Demand Water Pump
- 13.5 Central A/C w/ Louvered Directional Ceiling Vents & Wall Thermostat.
- Fast-Blast A/C Grill
- 12V Electrical System w/ Deluxe 110V 45-Amp Power Converter
- 6 Gal. Gas/Electric DSI Hot Water Heater
- 30-Amp Power Cord
- 110V GFCI Protected Exterior Receptacle
- Auto-Ignition Furnace with Wall Thermostat (35k)
- In-Floor Ducted Heat
- ABS Holding Tanks
- Water System Winterization Kit
- Water Heater Bypass

Bathroom Equipment

- Black Tank Flush
- Shower Curtain with Curved Shower Track for Tubs
- ABS Tub / Shower Surround
- Glass Door for Neo-Angle Showers
- Bathroom Power Vent
- Bathroom Door Casing
- Porcelain Stool with Foot Flush
- Large Sink in Bathroom
- Medicine Cabinet w/Mirror
- Vinyl Flooring
- Flat Panel Bath Door

Standard Kitchen Equipment

- Microwave Oven with Carousel
- High-Rise Faucet
- Acrylic Residential-Style Sink (50/50)
- 3-Burner Cook Top w/ HO Front Burner and Piezo Igniter
- Range Hood w/Light and Exhaust Fan
- Extra Large Picture Window at Dinette
- Ball Bearing Drawer Guides

- Spice Rack, Built-In Under Kitchen Sink (select models)
- Large Oven
- Arched Raised Panel Kitchen Overhead Cabinet Doors
- Trash-Can Cabinet in Kitchen
- Double Door Refer
- Paneled Refer Front

Standard Bedroom Equipment

- Bedroom Roof Vent
- Full Length Shirt Wardrobe in Bedroom
- Innerspring Mattress
- Foam Mattress for Bunk Beds
- Bedspread
- Carpet w/ Padding
- Built in Headboard Storage
- Under-Bed Storage w/ Gas Struts
- Angled Overhead Cabinets Above the Bed

Standard Exterior Equipment

- Heated and Enclosed Underbelly
- Extra Large Folding Grab Handle
- Pull Out Bumper Extension / Bike Rack
- Diamond Plate Lower Front
- 15" Radial Tires
- Front Hitch Light
- ABS Propane Gas Bottle Cover
- Bumper w/Drain Hose Carrier, End Caps
- Lighted Pass-Thru Exterior Storage
- Thick, Insulated, Radius-Cornered Baggage Doors
- Straight Axles w/ Electric Brakes
- E-Z Lube Axles
- Painted Lower-Bodyside Metal
- Radius Painted Lower-Bodyside Skirt Metal & Matching Door Stripping
- Amber Patio Light w/ Inside Switch
- Radius-Cornered Fiberglass Entrance Door w/ Screen Door
- Molded Rain Guttering w/ Drip Spouts
- Radius Retractable Entrance Step
- Black Framed Radius Tinted Safety Glass Windows
- LP Quick Connect

Standard Interior Equipment

- Sliding Pocket-Style Doors (most models)
- Pocket Screwed Cabinets
- Wrapped Slide Fascia
- OH Cabinet Over Sofa in Super-Slides
- Solid Wood Drawer Fronts
- Extra Large 45"x76" U-Shaped Dinettes (Certain Models)
- Multi-Purpose Inside/Outside Dinette Table
- Light Over Sofa and Dinette
- Full Width (72") Sofas (select models)
- Convertible Sofa
- Satellite/Cable TV Hook-Up w/ RG6 Coax Cabling
- Carpet w/ Padding
- Roof Mounted Antenna for Radio
- Swivel rocker(s)
- Crank-Up TV Antenna w/ Signal Booster
- Fabric Covered Box Valances with Lambrequin Legs
- Wallpaper Border

Capacity

- Fresh Water 50 gal - Slide Models
- Black water 37 gal
- Grey 37 gal
- 2 x 30 lb LP Gas Bottles w/ Auto Changeover

Standard Safety Equipment

- Propane Alarm
- Break-Away Switch
- Dead-Bolt Lock on Entrance Door
- Dual Hitch Safety Chains
- Smoke Alarm
- Multiple Egress Windows
- Fire Extinguisher
- Carbon Monoxide Alarm

Power Plus Package (Standard)

- Electric Awning
- Power Stabilizer Jacks (2 pair)
- Air Mattress Hide-A-Bed
- Aluminum Rims
- Rear Ladder (N/A 31RETS)

Entertainment Package (Standard)

- 26" Flat Screen TV
- AM / FM / CD / DVD System
- Exterior Speakers

OPTIONS:

EXTERIOR OPTIONS

- Spare Tire and Carrier
- Patio Door (30FKS ONLY)

INTERIOR UPGRADES

- Rear Dinette IPO Lower Bunk (30BHS)
- Free Standing Dinette (N/A 32BHDD, 28BHSS)
- Beauflor Linoleum

HEATING & COOLING UPGRADES

- - 15,000 A/C BTU IPO 13,500 A/C
- - Dual Pane Windows



LAKESIDE EDITION

- Includes Everything North Country Plus
- Laminated Sidewalls
- Raised Panel Cabinet Doors Through-out
- Power Tongue Jack



Heartland Recreational Vehicles
1001 All-Pro Drive • Elkhart, IN 46514 • 574-262-5992

Community. Convenience. Close-to-home.

Where you purchase your recreational vehicle is ultimately your decision but Heartland urges you to consider buying at your local dealer. Dealers are part of your community, providing jobs and contributing to your local economy. These dealers are under obligation to provide warranty service for products they sell, but are not legally required to service products purchased from other dealers. At some point, you may need to return to the dealer you buy from - why not stay close to home? After all, home is where your Heartland is!

BENEFITS OF PURCHASING YOUR RV LOCALLY:

- You enjoy valuable relationship building with Dealer Representatives, close to your home, who will explain the features and benefits of the product.
- You receive a full product orientation prior to delivery, which includes hands-on directions for many of the coach's systems and functions. You are also introduced to the Dealership's Service/Parts/Warranty personnel who are at the ready to help you with any issues you may encounter, now and in the future.
- You enjoy customer PRIORITY. Dealerships generally service their purchasing customers first - others may experience long delays and miss opportunities to use their RV. What is it worth for you to have a dealership's full attention and motivation to satisfy you when you need service - in a timely manner?
- Valuable TAX dollars and jobs stay in YOUR community which pays for your roads, schools, police and fire departments.

DON'T UNDERESTIMATE CUSTOMER SERVICE AND PERSONAL CARE!

For Canadian Residents: If you purchase an RV out-of-country, there are additional fees, taxes and inspections that must be met before bringing your product home. Your local Canadian dealers are experts in these provisions.

Your Authorized Heartland Dealer:



www.HEARTLANDRVs.com

- Experience:
- Product Walk-Through Videos
 - Side By Side Comparisons
 - Feature Videos • Photo Galleries
 - Virtual 360° Tours
 - Detailed Floor Plans
 - News • Testimonials
 - Customer Service
 - Service Locator
 - Owners Club • More
- at our Informative Web Site



NORTH COUNTRY

BY HEARTLAND

VENDOR DIRECT 800#

CALL DIRECT FOR DIRECT RESULTS! TOLL FREE & WARRANTY PHONE NUMBERS:

As an effort to offer the best possible customer service, we are providing you with the warranty phone numbers of our retail customer vendor partners so you may speak directly with them to more quickly resolve service issues. Check the brand name on the product to determine the correct vendor.

LIPOVIC	1-866-624-7824	SUBURBAN	1-402-775-2171
DEXTER AXLE	1-674-235-7888	SWAN	1-800-228-7926
DOMETIC	1-800-664-4881	B & B	1-674-229-7939
NORCO	1-800-347-2232	FLAR	1-674-624-2193
SHUR FLOW	1-800-954-9216	SEAT TECH	1-866-624-7821
THEFTORD	1-800-643-1219	ONAN	1-800-889-6626
KIB	1-800-255-7051	COMPLEX	1-800-688-6663
TREXID TIRE	1-866-443-8987	HAER	1-877-481-4788
A.S.A.	1-800-688-3116	CAREFREE	1-800-423-3230
PROGRESSIVE	1-208-781-4341	SEKA	1-800-428-6884
CHENG	1-877-284-8987	WHEELPOLE	
ATWOOD	1-866-868-3116	MAYTAG	1-800-646-9086 Prompt 5
		NORCOLD	1-800-643-1219

©2014 Heartland Recreational Vehicles. All rights reserved. All other trademarks are the property of their respective owners. Heartland Recreational Vehicles is not responsible for the accuracy of the information provided. See your nearest Heartland dealer to review a current model.

**Call Direct,
Fast Results!
800# LABEL
IN EVERY HEARTLAND**

We provide a convenient sticker in each coach listing the warranty phone numbers of our most common vendor partners so that if you choose to, you may work directly with them to more quickly resolve issues or obtain replacement items.



**HEARTLAND
CUSTOMER SERVICE
WE'VE GOT YOUR BACK!**

Over 40 men and women located in a dedicated facility servicing our customers every day. With a dealer network of over 400 locations across the U.S. and Canada, you're never far from an authorized Heartland dealer.

Product information is as accurate as possible as of the date of publication of this brochure. Due to Heartland's commitment to continuous product improvement - floorplans, materials, components, features, specifications, options, etc. are subject to change without notice or obligation to Heartland Recreational Vehicles. Product information and specifications apply to coaches beginning with serial number 232137. **Tow Vehicle Caution:** Owners of Heartland recreational vehicles are solely responsible for the selection and proper use of tow vehicles. All customers should consult with a motor vehicle manufacturer or their dealer concerning the purchase and use of suitable tow vehicles for Heartland products. Heartland disclaims any liability or damages suffered as a result of the selection, operation, use or misuse of a tow vehicle. Heartland's limited warranty does not cover damage to the recreational vehicle or the tow vehicle as a result of the selection of the tow vehicle. See your nearest Heartland dealer to review a current model. 40,000 Litho 1/11