

THE PEAK OF LUXURY AND INNOVATION
ALPINE

ALPINE



**Keystone RV
Company**

ALPINE

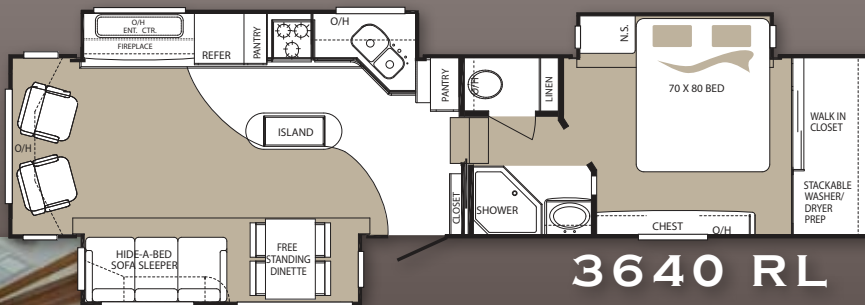
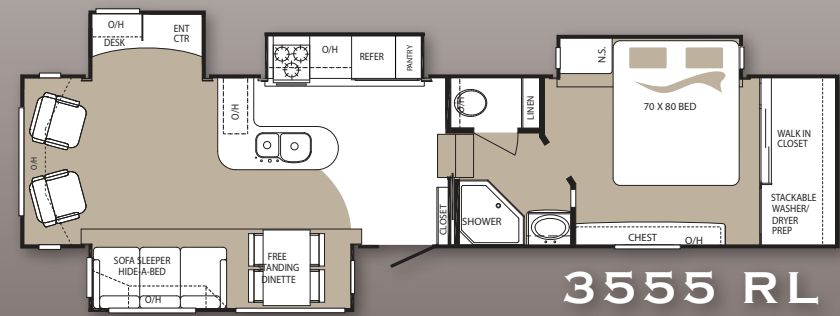
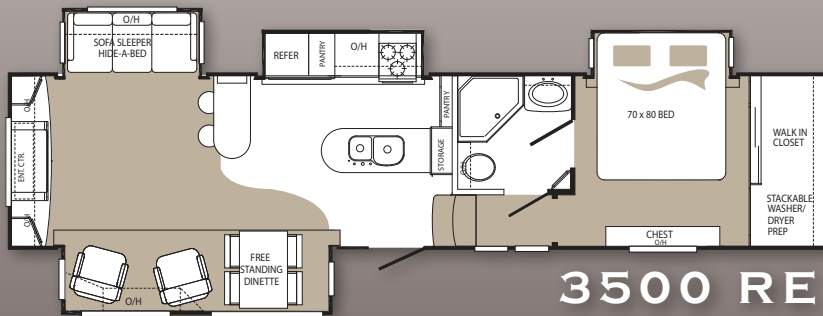
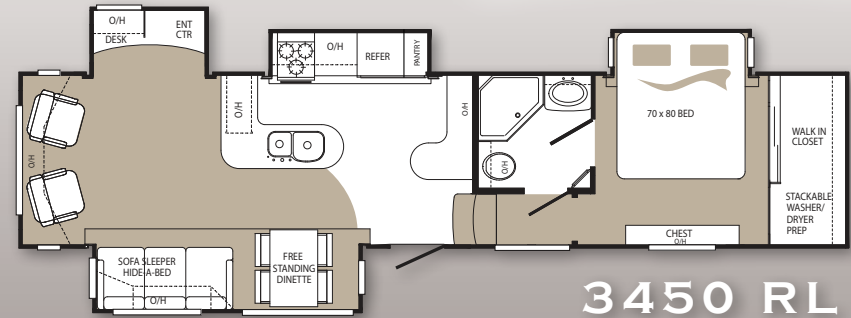
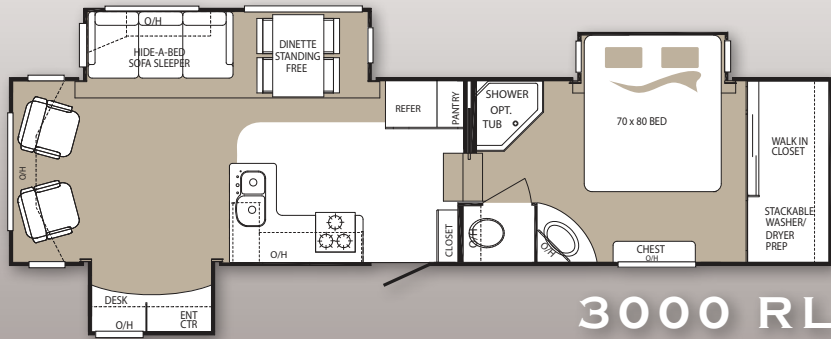


The Alpine was brought to life as the next generation in the High Profile 5th Wheel market and to set a new standard in luxury and innovation. The Alpine was crafted and engineered by the industry's leading innovators at Keystone RV in an effort to bring a product to the market that surpassed your expectations in quality, aesthetics, and livability. From the industry's most elaborate graphics package to class "A" style Slam Baggage doors; from sturdy 12" I-Beams to the Bed-rock laminated floors; and from beautiful Glazed Grand Cherry hardwoods to stunning stainless steel appliances—we've aggressively attacked these principals. To top it all off, the Alpine is the most competitively priced high-profile luxury fifth wheel available today. Come experience the industry's most cutting edge floorplans and amenities. Introduce yourself to the industry's PEAK of Luxury and Innovation...The Alpine.



FLOORPLANS

ALPINE



www.keystone-alpine.com

	3000 RL	3450 RL	3500 RE	3555 RL	3640 RL	TBD
SHIPPING WEIGHT	TBD	TBD	TBD	TBD	TBD	TBD
CARRYING CAPACITY	TBD	TBD	TBD	TBD	TBD	TBD
HITCH	TBD	TBD	TBD	TBD	TBD	TBD
EXTERIOR LENGTH	TBD	TBD	TBD	TBD	TBD	TBD
EXTERIOR HEIGHT	TBD	TBD	TBD	TBD	TBD	TBD
FRESH WATER GAL.	TBD	TBD	TBD	TBD	TBD	TBD
WASTE WATER GAL.	TBD	TBD	TBD	TBD	TBD	TBD
GREY WATER GAL.	TBD	TBD	TBD	TBD	TBD	TBD

STANDARDS & OPTIONS

EXTERIOR FEATURES

- MAX TURN high-gloss fiberglass front cap featuring:
- 30% better turning radius
- Aerodynamic design w/ 18% better drag efficiency
- Hitch Assist back up mirror w/ lights
- High Gloss exterior sidewalls, baggage doors, and entry door
- Class "A" style dual latch "slam" baggage doors
- Keyless Entry
- Easy open 4-step entry steps w/ recessed rope lighting for visibility
- Super-size 6'4" tall, 30" wide entry door
- Motion activated porch lighting
- Deluxe Graphics package
- High Gloss fiberglass rear cap
- Reverse (back up) lights
- One piece polypropylene underbelly
- Triple insulated, ducted and heated holding tanks
- All-IN-One "Waterworks" exterior utility center featuring:
- Easy siphon winterization system
- Water heater bypass
- Enclosed low point drain valves
- Ducted heat for cold weather protection
- All dump valves
- Soap dispenser
- 110V outlet
- Black tank spray hookup
- 16" E-load radial tires w/ 8 wheel lugs
- Heavy duty 7,000lb axles
- Easy lube axles
- 12" -Beams with Z-frame technology
- Trail-Air Equa Flex Suspension® featuring:
- Improved impact absorption
- Improved axle equalization
- Greasable "wet" bolts
- Long lasting 1/2" steel shackle plates
- Long lasting bronze bushings
- "No Sweat" vented attic system
- 50AMP service w/ detachable power chord
- Hydraulic selector valves for slideouts
- Power front landing jacks w/ 8" diameter all-terrain landing pads
- Gutters w/ rain spouts
- Rear Ladder
- One-Touch electric awning package w/ adjustable arms
- Tinted 80% safety-glass windows
- Electric rear jacks

INTERIOR FEATURES

- Upgraded appliance package featuring:
- Stainless steel refer, stove, range, micro/convection
- 30" Convection oven/microwave
- Amana sealed burner range w/ 22" oven
- 12 Gallon DSI 2-way water heater
- 42,000BTU furnace
- Digital "Smart" Thermostat with dual zone capability
- Heavy duty residential ball bearing drawer guides
- Extra deep, fully extendable drawers
- Deluxe Corian package featuring:
- Corian Countertops
- Flush Mounted Corian range cover
- Corian sink cover
- Stainless steel extra deep sink with dual bowls
- High rise, single lever kitchen faucet
- Maximized kitchen storage w/ more drawers and pantry space
- Super Cinema package featuring:
- Huge LCD TV
- True surround sound system w/ subwoofer and directionals
- Name brand DVD player
- Digital TV antenna w/ built in booster
- Dual cable & satellite hookups
- "Sleep & Store" upgraded sofa and air mattress in LR
- 4 high back dinette chairs with built in storage
- Residential dinette w/ wide base, hidden leaf, and center storage
- Extra tall 6'5" main slide height
- Day/night shades
- Ceiling fan with upgraded lighting fixtures
- Electric roof vent in kitchen
- Telephone jack
- LP leak detector
- "One Place Command Center" centrally located operational switches & gauges
- Huge 38" garden shower with molded seat
- Translucent glass shower door & enclosure
- Hand held massaging shower head
- Skylight over shower
- Porcelain toilet
- Single level master bedroom suite
- Residential 70"x80" king bed
- "Cloud Nine" pillow top mattress
- Residential style headboard
- Cross ventilation bedroom windows where available
- Quilted bedspread and pillows

ALPS PACKAGE

- North Face Insulation Package:
- Triple insulated R-40+ floor, R-11 SW, & R-28 ceiling
- Heated basement
- heat ducting to tanks
- Heated "Water Works" area
- Sure-Road Bundle:
- Class "A" style slam baggage doors
- Front & Rear electric jacks
- High gloss sidewalls & doors
- Electric one-touch awning
- Equa-Flex suspension system
- Gold Key Security Bundle:
- Outside motion activated lighting
- Automatic door lighting
- Keyless Entry
- Optional security alarm
- Bedrock Bundle
- Double laminated flooring
- 12" I-beams w/ Z-frame technology

CHATEAU PACKAGE

- Whisper Air Return Bundle:
- 15,000BTU A/C w/ cold air return vents
- Digital "Smart" Thermostat with dual zone capability
- Heat Pump
- Rewards Interior Bundle:
- Glazed Grand Cherry w/ hardwood doors, drawers, stiles & Fascia
- Premium sofa w/ air mattress
- Huge LCD TV
- 12G DSI water heater
- Ultimate Kitchen Bundle:
- Corian Countertops, sink, and range cover
- Stainless steel appliances
- Range w/ sealed burners & 22" oven
- 30" Convection oven/microwave
- Maximized kitchen storage w/ more drawers and pantry space
- Retreat Collection:
- Deluxe Glazed Grand Cherry wardrobe
- Cedar lined walk-in closet w/ dressing bench and storage
- Stackable washer/dryer prep

ALPINE

OPTIONS

- Trail Air Pin Box
- Slide Awning Pkg
- Gen Prep
- 13 cu ft Refer
- Central Vac
- Electric Fireplace
- Vent Fan w/ Sensor in BR
- Bedroom A/C
- Entry Door Alarm
- Dual Pane Windows
- End Table w/ Lamp
- 2 Bar Stools
- Winterization Kit
- Canadian Compliance
- RVIA Seals
- Go RVIA MEP Fee



www.keystonerv.com

2642 Hackberry Drive Goshen, Indiana 46526 (574) 535-2100

Product information is as accurate as possible as of the date of publication of this brochure. Features, floor plans, and specifications are subject to change without notice. Please also consult Keystone's web site at keystonerv.com for more current product information and specifications. **Tow Vehicle Disclaimer. CAUTION:** Owners of Keystone recreational vehicles are solely responsible for the selection and proper use of tow vehicles. All customers should consult with a motor vehicle manufacturer or their dealer concerning the purchase and use of suitable tow vehicles for Keystone products. Keystone disclaims any liability or damages suffered as a result of the selection, operation, use or misuse of a tow vehicle. **KEYSTONE'S LIMITED WARRANTY DOES NOT COVER DAMAGE TO THE RECREATIONAL VEHICLE OR THE TOW VEHICLE AS A RESULT OF THE SELECTION, OPERATION, USE OR MISUSE OF THE TOW VEHICLE.** 11/2009