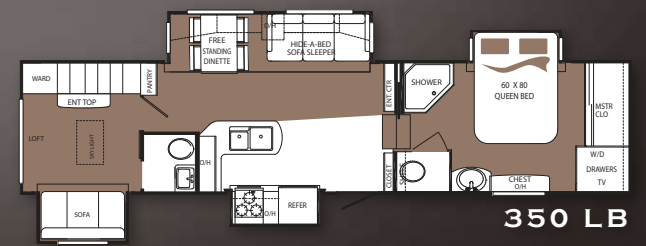
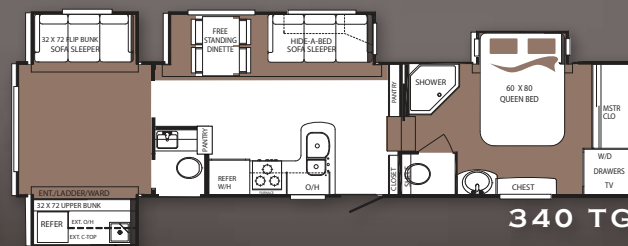
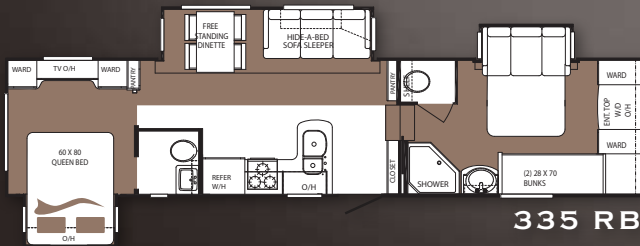
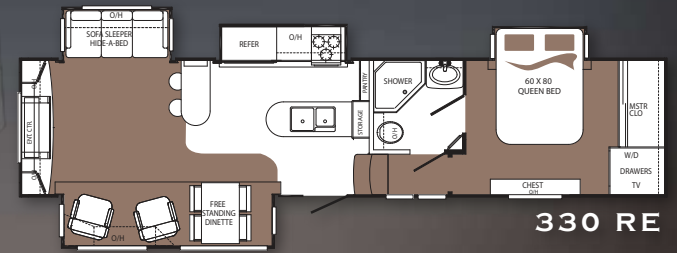
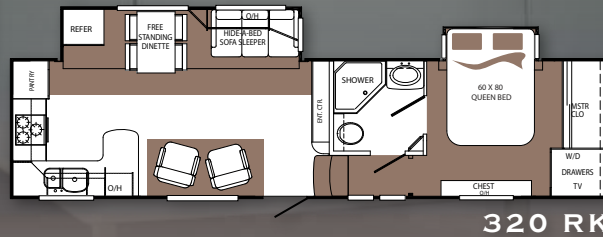
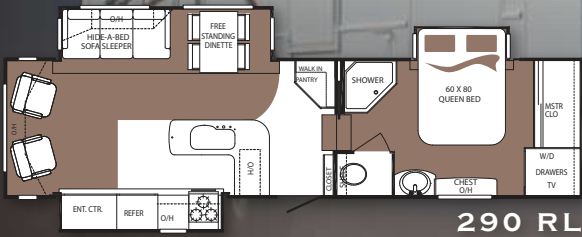


THE PEAK OF COMFORT AND VALUE
AVALANCHE

AVALANCHE

By Keystone



EXTERIOR KITCHEN
 OUTDOOR KITCHEN

STANDARDS & OPTIONS



EXTERIOR FEATURES

- Super-size pass-through storage with anti-skid flooring & D-Rings
- MAX TURN high-gloss fiberglass front cap featuring:
- 30% better turning radius
- Aerodynamic design w/ 18% better drag efficiency
- Hitch Assist back up mirror w/ lights
- Easy open 3-step entry steps w/ overhead rope lighting for visibility
- Deluxe graphics package
- One piece polypropylene underbelly
- Triple insulated, ducted and heated holding tanks
- All-IN-One "Waterworks" exterior utility center featuring:
- Easy siphon winterization system
- Water heater bypass
- Enclosed low point drain valves
- Ducted heat for cold weather protection
- All dump valves
- Soap dispenser
- 110V outlet
- Black tank spray hookup
- 16" E-load radial tires w/ 8 wheel lugs
- Heavy duty 6,000 lb axles
- Easy lube axles
- 10" -Beams with Z-frame technology
- Trail-Air Equa Flex Suspension® featuring:
- Improved impact absorption
- Improved axle equalization
- Long lasting 1/2" steel shackle plates
- Long lasting bronze bushings
- "No Sweat" vented attic system
- 50AMP service w/ detachable power chord
- Outside entertainment system featuring:
- Two exterior stereo speakers
- Cable TV hookup
- 110V outlet
- Gutters w/ rain spouts
- Rear Ladder
- One-Touch electric awning package w/ adjustable arms
- Tinted 80% safety-glass windows

INTERIOR FEATURES

- Upgraded appliance package featuring:
- Large 9 cu ft refrigerator
- Large microwave w/ vented range hood
- High output three burner range with 22" oven
- 12G DSI water heater
- 35,000BTU ducted furnace
- Heavy duty residential ball bearing drawer guides
- 20" deep drawers where applicable
- Pre-drilled, screwed cherry cabinetry
- Stainless steel extra deep sink with dual bowls
- High rise, single lever kitchen faucet
- Maximized kitchen storage w/ more drawers and pantry space
- Super cinema package featuring:
- Huge LCD TV
- Surround sound system w/ directionals
- Name brand DVD player
- Digital TV antenna w/ built in booster
- Dual cable & satellite hookups
- 4 high back dinette chairs with built in storage
- Residential dinette w/ wide base, hidden leaf, and center storage
- Extra tall 6'5" main slide height
- Day/night shades
- Ceiling fan with upgraded lighting fixtures
- Telephone jack
- LP leak detector
- "One Place Command Center" centrally located operational switches & gauges
- Large residential style shower surround
- Translucent glass shower door & enclosure
- Hand held massaging shower head
- Skylight over shower
- Porcelain toilet
- Single level master bedroom suite
- Queen bed
- Cross ventilation bedroom windows where available
- Quilted bedspread and pillows

WHITEOUT PACKAGE

- Thermo-shield R-37 tank wrap
- Drop frame technology
- Class "A" style dual latch "slam" baggage doors
- Electric front and rear jacks
- Electric back-rack & storage on rear
- Aluminum wheels
- Trail-Air Equa-Flex Suspension

BASE CAMP COLLECTION

- Solid cherry cabinet doors, drawers, stiles & fascia
- "Sleep & Store" upgraded sofa and air mattress in LR
- Corian kitchen countertops AND flush mounted sink covers
- Wire & brace for second A/C in bedroom
- Huge LCD TV in living room
- Washer & dryer prep
- 50 amp service

DECOR OPTIONS

- Royal Onyx
- Botanical
- French Roast

OPTIONS

- Booth dinette
- Vent Fan in bedroom
- Gen prep
- Electric fireplace
- Dual A/C prep (BR)
- Dual pane windows
- 2 bar stools
- Winterization kit
- Canadian compliance
- RVIA seals
- Go RVIA MEP fee

WEIGHTS

	290 RL	320 RK	330 RE	335 RB	340 TG	350 LB
SHIPPING WEIGHT	TBD	TBD	TBD	TBD	TBD	TBD
CARRYING CAPACITY	TBD	TBD	TBD	TBD	TBD	TBD
HITCH	TBD	TBD	TBD	TBD	TBD	TBD
EXTERIOR LENGTH	TBD	TBD	TBD	TBD	TBD	TBD
EXTERIOR HEIGHT	TBD	TBD	TBD	TBD	TBD	TBD
FRESH WATER GAL.	TBD	TBD	TBD	TBD	TBD	TBD
WASTE WATER GAL.	TBD	TBD	TBD	TBD	TBD	TBD
GREY WATER GAL.	TBD	TBD	TBD	TBD	TBD	TBD

WWW.KEYSTONE-AVALANCHE.COM



www.keystonerv.com

2642 Hackberry Drive Goshen, Indiana 46526 (574) 535-2100

Product information is as accurate as possible as of the date of publication of this brochure. Features, floor plans, and specifications are subject to change without notice. Please also consult Keystone's web site at keystonerv.com for more current product information and specifications. **Tow Vehicle Disclaimer.** CAUTION: Owners of Keystone recreational vehicles are solely responsible for the selection and proper use of tow vehicles. All customers should consult with a motor vehicle manufacturer or their dealer concerning the purchase and use of suitable tow vehicles for Keystone products. Keystone disclaims any liability or damages suffered as a result of the selection, operation, use or misuse of a tow vehicle. **KEYSTONE'S LIMITED WARRANTY DOES NOT COVER DAMAGE TO THE RECREATIONAL VEHICLE OR THE TOW VEHICLE AS A RESULT OF THE SELECTION, OPERATION, USE OR MISUSE OF THE TOW VEHICLE.** 11/2009