

Wildwood

by FOREST RIVER



LE SERIES



LA SERIES
Aluminum Framed Fiberglass
Luxury Touring Models

Wildwood

FORMERLY LE



COMFORT, COVENIENCE AND QUALITY ARE THE TRADEMARKS OF EVERY WILDWOOD PRODUCT.
(26TBSS SHOWN IN BURGANDY W/CUSTOMER SUPPLIED TV)



WILDWOOD LE MODELS ARE PACKED WITH THE MOST IMPORTANT FEATURES. FROM THE FLIP AROUND ENTERTAINMENT CENTER (ABOVE LEFT) TO THE RESIDENTIAL SIZE REFRIGERATOR (36' AND LARGER), YOU ASKED FOR IT AND WE DELIVERED, AT WILDWOOD CUSTOMER SATISFACTION IS OUR GOAL.



STANDARD 60" PATIO DOOR ON THE 36BHSS, 36BHBS & 37BHSS2Q

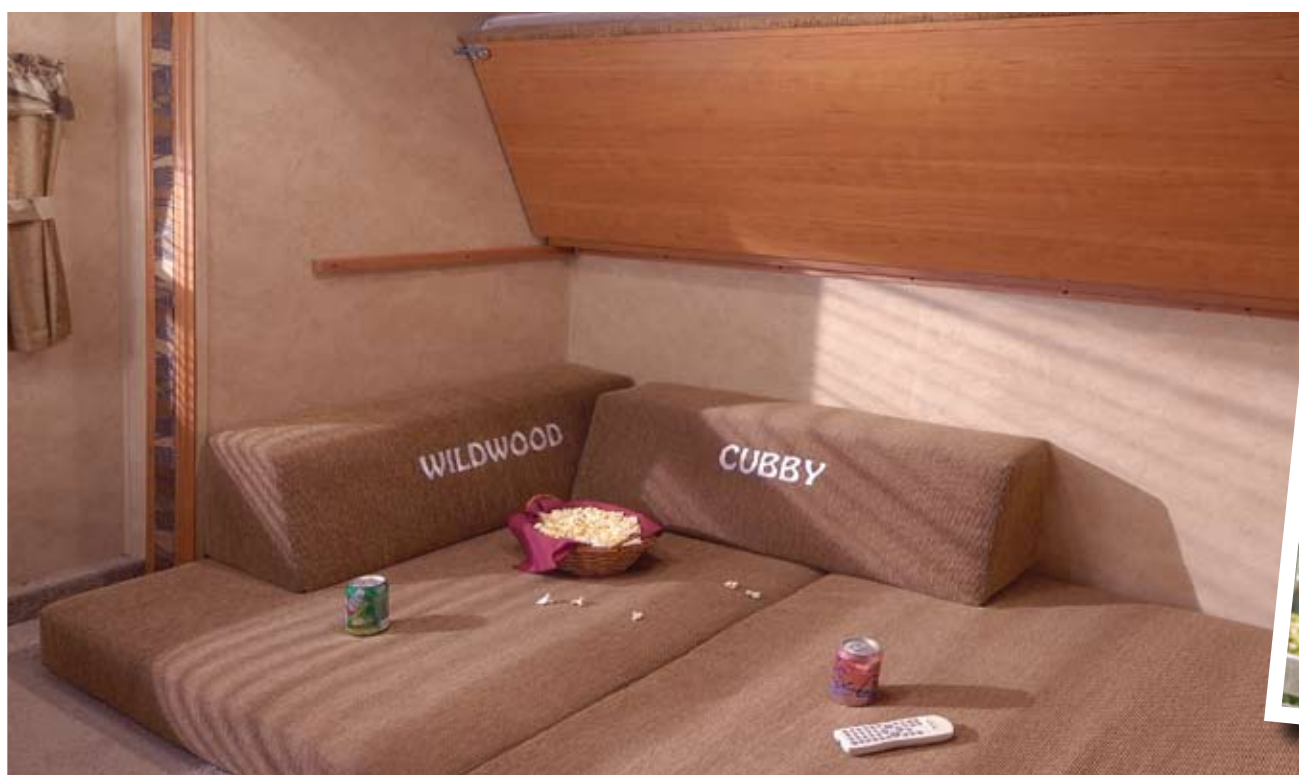
Wildwood



29BHBS SLIDE OUT WITH TAN INTERIOR



AS YOU CAN SEE WILDWOOD LE MODELS ARE ABOUT FAMILY FUN AND FUNCTIONALITY, WITH PLENTY OF ROOM FOR EVERYONE. THE WILDWOOD CUBBY (BOTTOM LEFT) HAS PROVEN TO BE AN EXTREMELY POPULAR WILDWOOD OPTION.





A



B



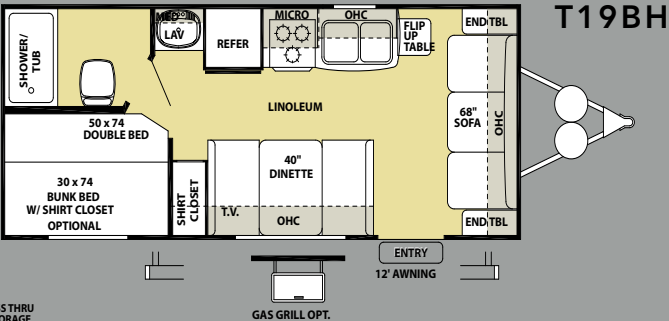
C



D

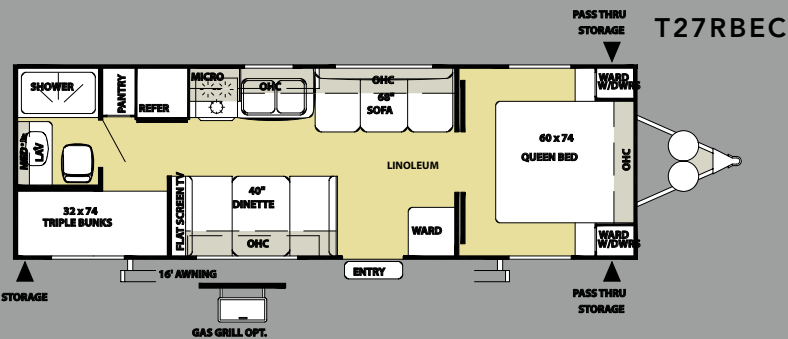
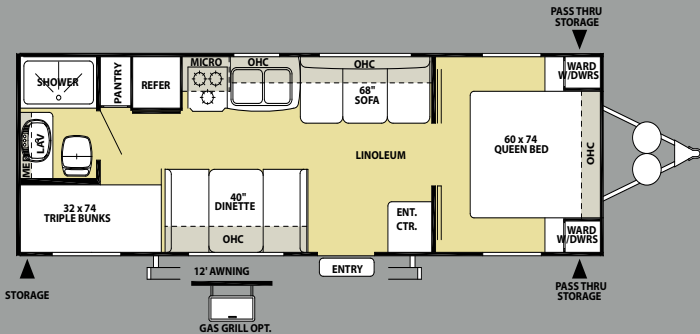
FORM FOLLOWS FUNCTION. AT WILDWOOD QUALITY IS SERIOUS BUSINESS AND IT SHOWS, OUR COMMITMENT TO QUALITY INCLUDES HEATED HOLDING TANKS (A), OUR 1 PIECE RUBBER ROOF (B), STRUT ASSIST UNDERBED STORAGE (C), AND 5/8" TONGUE AND GROOVE PLYWOOD FLOORING.

WILDWOOD LE NON-SLIDE TRAVEL TRAILERS



T19BH

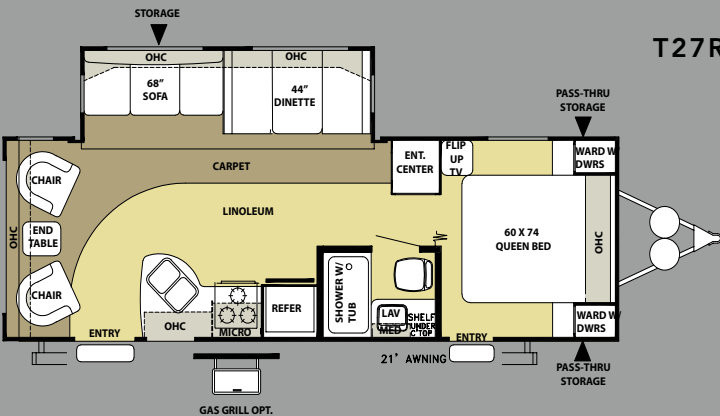
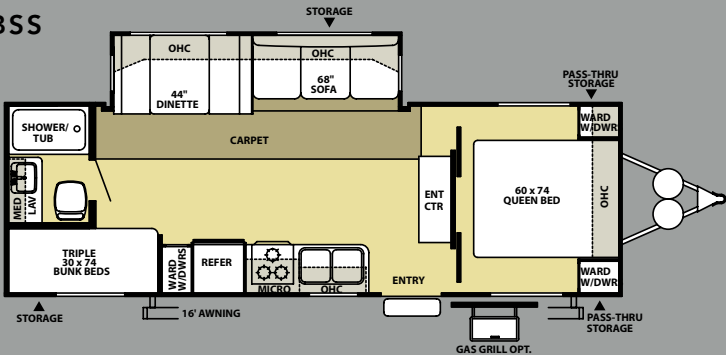
T27RB



T27RBEC

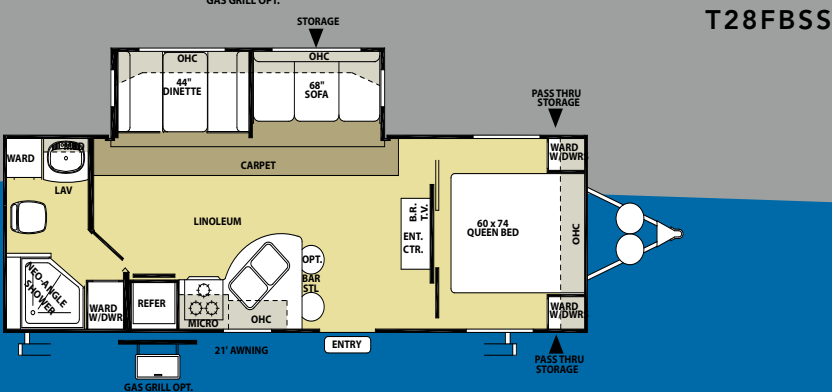
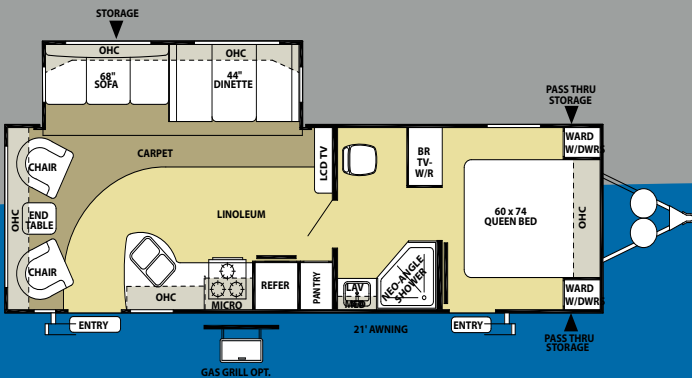
SLIDE-OUT TRAVEL TRAILERS

T26TBSS



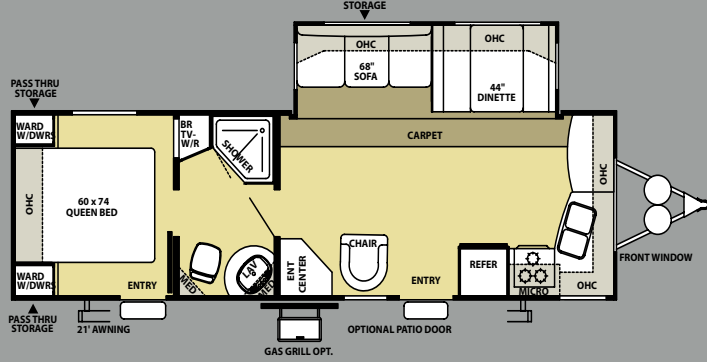
T27RLSS

T28RLSS

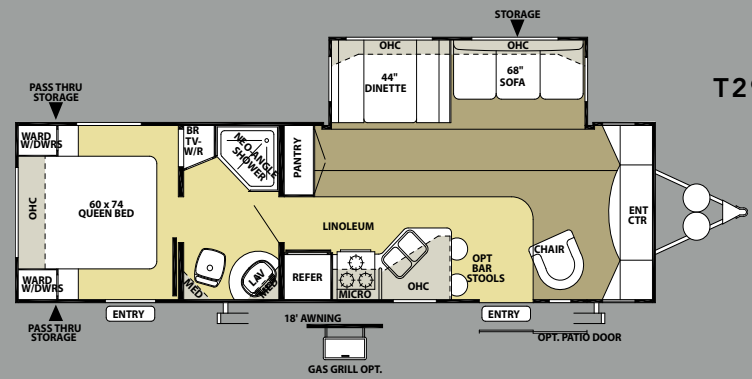


T28FBSS

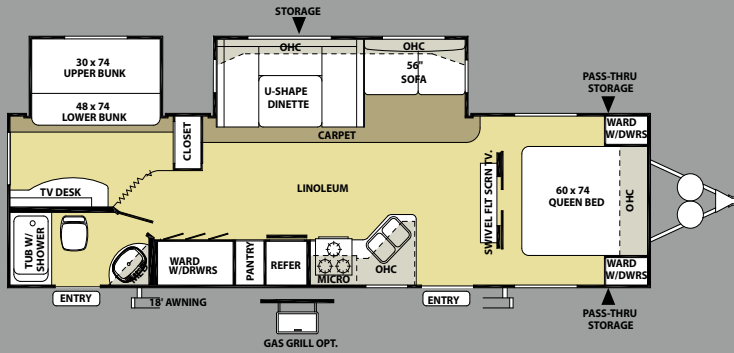
T29FKSS



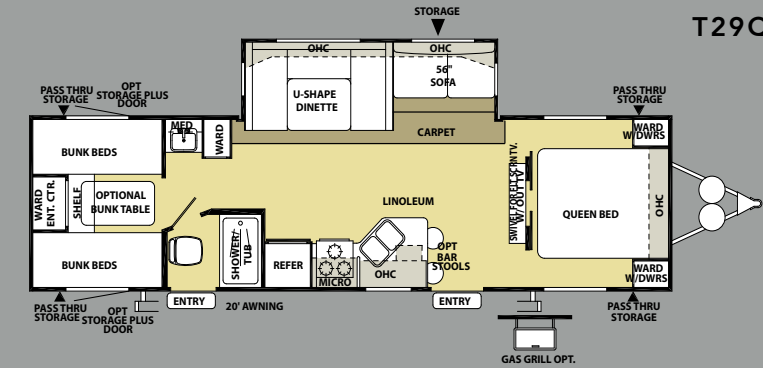
T29FLSS



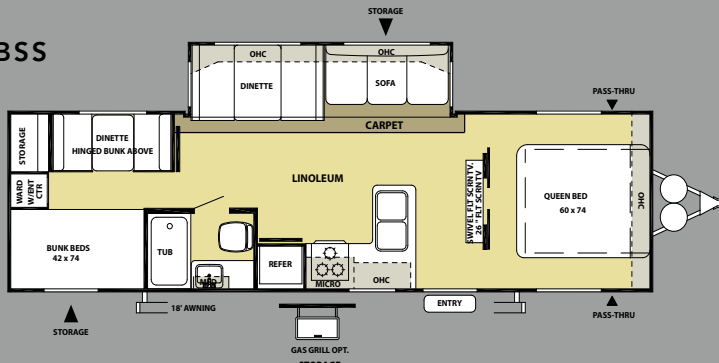
T29BHBS



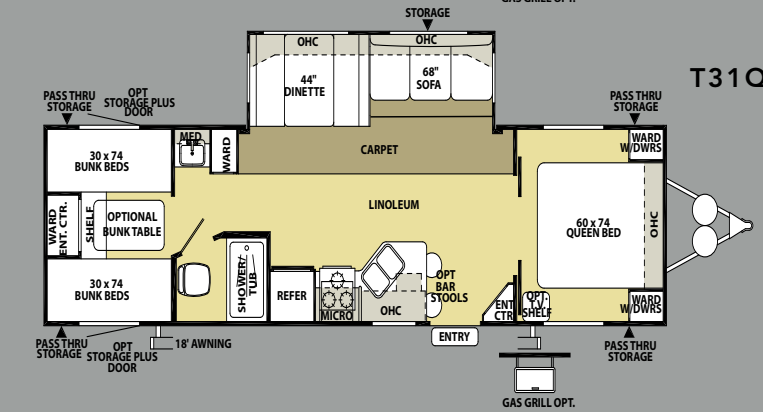
T29QBSS



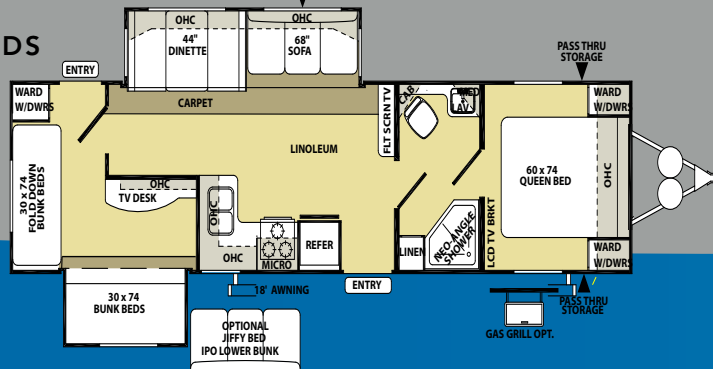
T30QBSS



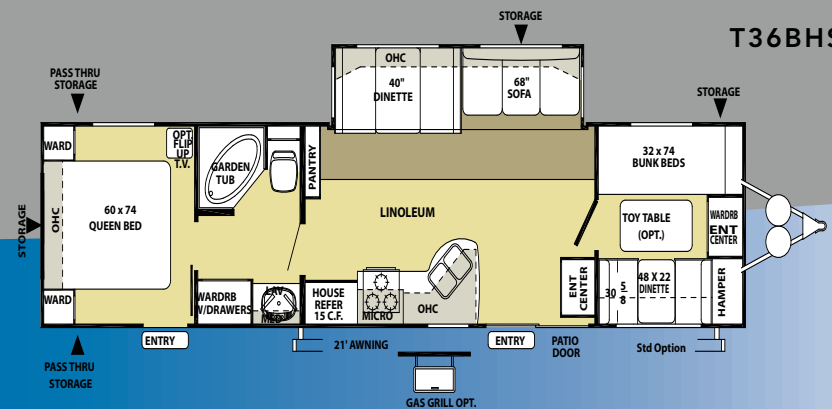
T31QBSS



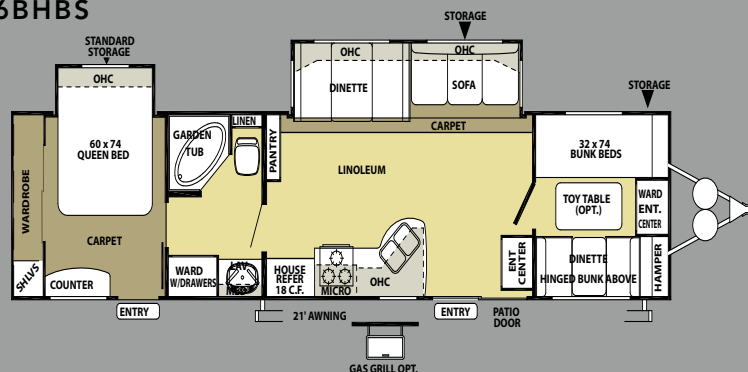
T32BHDS



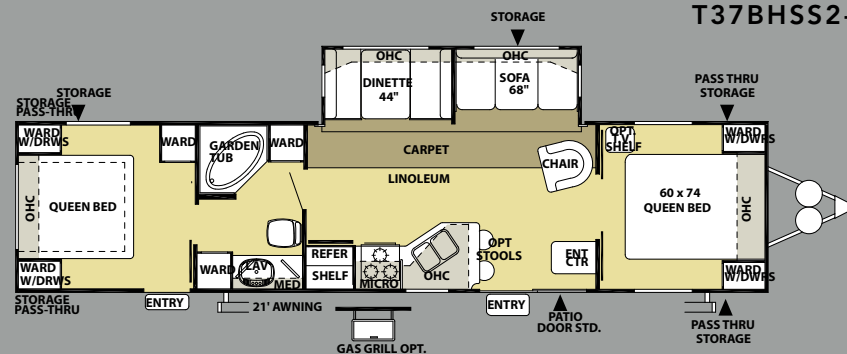
T36BHSS



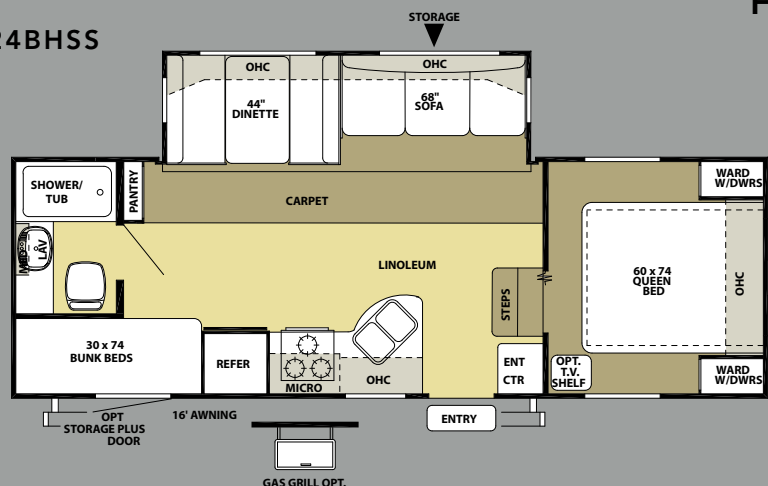
T36BHBS



T37BHSS2-Q

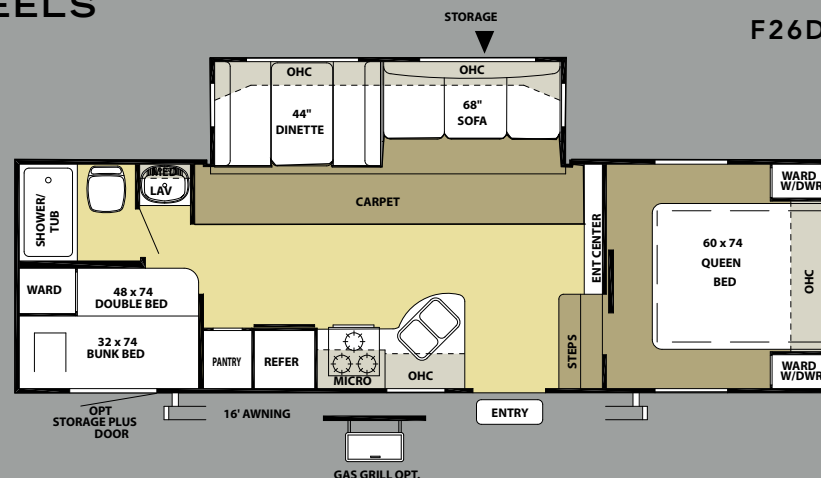


F24BHSS



FIFTH WHEELS

F26DDSS



TRAVEL TRAILERS

	19BH	27RB	27RBE	26TBSS	27RLSS	28RLSS	28FBSS	29FKSS	29FLSS	29BHBS	29QBSS	30QBSS	31QBSS	32BHDS	36BHSS	36BHBS	37BHSS2Q	F24BHSS	F26DDSS
Hitch Weight (lb)	435	590	615	805	680	660	900	910	860	875	TBD	980	805	870	990	720	970	1050	1238
Axle Weight	3535	4260	4242	5075	5060	5342	5110	5306	5330	6820	TBD	5595	5855	7040	6390	7171	6630	5000	5293
Dry Ship Weight	3970	4850	4857	5880	5740	6002	6010	6206	6240	7695	TBD	6575	6660	7910	7380	7891	7600	6050	6531
GVWR	7435	7590	7615	7805	7680	7660	7900	7900	7910	11035	TBD	11140	10965	11030	11150	10880	11130	8050	8238
CCC (Cargo Capacity)	3427	2702	2720	1887	1332	1620	1852	1656	1632	2960	TBD	4565	4267	3082	3732	2951	3092	1962	1669
Ext Length	22' 10"	29' 5"	29' 4"	28' 9"	31' 1"	32' 0"	20' 3"	30' 5"	32' 0"	34' 3"	TBD	33' 2"	34' 7"	36' 3"	33'11"	36' 7"	39' 0"	26' 2"	28' 0"
Ext Height	10' 6"	10' 6"	10' 6"	11' 1"	11' 1"	11' 1"	11' 1"	11' 1"	11' 1"	11' 1"	11' 1"	11' 1"	11' 1"	11' 1"	11' 1"	11' 1"	11' 1"	12' 5"	12' 5"
Int Height	80"	80"	80"	80"	80"	80"	80"	80"	80"	80"	80"	80"	80"	80"	80"	80"	80"	84"	84"
Fresh Water Cap (gal)	42	42	42	42	42	42	42	42	42	35	35	42	42	42	42	42	42	42	42
Black Water Cap (gal)	32	35	35	35	35	35	32	35	35	35	35	35	32	35	32	32	32	32	32
Grey Water Cap (gal)	35	32	32	35	35	35	32	70	70	66	32	60	35	64	35	35	35	35	35
Tire Size (in)	14"	15"	15"	15"	15"	15"	15"	15"	15"	15"	15"	15"	15"	15"	15"	15"	15"	15"	15"
Awning Size (ft)	12'	12'	16'	16'	21'	23'	21'	18'	18'	18'	20'	21'	18'	18'	21'	21'	21'	16'	21'

FIFTH WHEELS

WILDWOOD LE STANDARD FEATURES

CONSTRUCTION AND EXTERIOR

- 3/8" Walk-on Roof Decking
- Diamond Plate Rockguard (Travel Trailers)
- Radius Baggage Doors with Thumb Pulls and Holdbacks
- Hose Carrier Bumper with End Caps
- Full Pass Through Storage (per floorplan)
- A & E Awning with one piece vinyl
- Radius Clamp Ring Jalousie Windows
- E-Z Open Entry Step
- Fiberglass Entrance and Baggage Doors
- Steel Framed 30" Smooth Fiberglass Main Entry Door
- Sofa Exterior Storage Door
- 20-lb LP Bottles with Cover
- Lockable Exterior Range Vent Cover
- Fender Skirts
- Powder Coated I-beam frame
- Cambered Chassis
- 5/8" 5-Ply Tongue and Groove Plywood Floor Decking
- 2" x 3" Floor Joists 12" on Center
- Enclosed Fresh Water Tank in a Heated Compartment
- 6-Gal. LP Water Heater
- Water Heater By-pass
- Seamless Roto-cast Holding Tanks
- 2" Wall Construction 16" (or less) on Center
- R-7 Fiberglass Insulation Throughout
- 13 ply Cross Micro-Laminated Beam Header above Slide-outs
- Double Wipe Slide-out Seal (Slide-out models)
- Electric Slide-Out Systems (Flush Floor)
- Seamless Roof with 12-Year Warranty
- 5" Bowed Truss Roof Rafters
- Arched-Mortise & Tenon Wood Cabinet Doors
- Swing Arm Entry Assist Handle

KITCHEN

- Dometic® Double Door Refrigerator
- Deep Basin 60/40 Residential Style Sink
- Microwave with Carousel
- 14" Deep Overhead Cabinets
- 3-Burner, High Output Range w/ Oven
- Range Hood with 12-Volt Exhaust Fan and Light
- Armstrong® ToughGuard™ Flooring
- "Bull-Nose" Countertops with Matching Edge
- Solid Wood Drawers
- Pantry Storage (per floorplan)
- Knife Rack
- Flip-Down Silverware Storage under Sink (where applicable)
- Large Overhead Cabinets
- Wall-Mounted Systems Monitor Panel
- High Rise Kitchen Faucet

- Brushed Nickel Hardware
- Flip Down Silverware Storage under Sink (Where Applicable)

LIVING ROOM

- 26" LCD TV (28RLSS, 29BHBS, 29QBSS, 30QBSS, 32BHBS, 26DDSS)
- 80" Interior Height Travel Trailers (84" Fifth Wheel models)
- 69" Interior Slide Height (Slide-out models)
- 13,500 BTU Roof Air Conditioner
- Swivel Rocker(s) (per floorplan)
- Flip Down Storage under Sofa (n/a sofa hide-a-bed)
- Decorative Wall Light
- Extra Large 44" Pedestal Booth Dinette (most Slide-out models)
- Large Dinette Picture Window
- TV Antenna and Booster
- AM/FM Stereo w/ CD and 4 Cube Speakers
- Full Length Extra Large Overhead Cabinets (Slide-out models)
- Patio Door with Vertical Blinds (36BHSS, 36BHBS, 37BHSS2Q)
- Swing-Arm Wall Sconce with Pleated Shade
- 25K BTU Suburban Forced Air DSI Furnace with Thermostat
- In-Floor Rigid Heat Ducting

BEDROOM

- Bedroom Carpet (Fifth Wheel models)
- Strut Lifted Storage Area under Bed
- Bedside Wardrobes with Drawers
- Bedside A/C Power Outlets (2)
- Solid Bedroom Privacy Doors (Most Models)

BATHROOM

- 12-Volt Power Bath Roof Exhaust Vent
- Wooden Medicine Cabinet with Mirrored Door
- Thetford® Fresh-Water Flush Toilet
- Wall-Mounted Towel Bar
- Hand Towel Ring

SECURITY AND SAFETY

- LP Leak detector
- Smoke Detector
- Carbon Monoxide Detector
- Fire Extinguisher
- Hitch Light (Travel Trailers)
- Amber Patio Light
- Welded Heavy Duty Safety Chains (Travel Trailers)
- Electric Brakes (all wheels)
- GFI Receptacles

WILDWOOD^{LE} OPTIONS

- Black Frame Safety Glass Tinted Windows
- 6-Gallon Gas/Electric DSI Water Heater
- Exterior LP Gas Grill
- 13,500 or 15,000 BTU Ducted Air w/ Quick Cool
- Outside Shower
- Stabilizer Jacks (Travel Trailer (4) or Fifth Wheel (2))
- Electric Front Jacks (Fifth Wheel models)
- Decorative Wallpaper Border
- Double Hide-A-Bed Sofa
- Insulated Storage Plus Door with Jalousie Window (per floorplan)
- 56" Air Hide-A-Bed Sofa on U-Shape Dinette Models
- Fitted Designer Bedspread with Queen Bed Comforter
- Bedroom Flip Table
- Storage Plus Door (31QBSS & 24BHSS)
- Cable TV hookup
- Skylight over Tub
- Tub Surround
- 30-lb LP Bottles with Cover and Auto Change (Travel Trailers)
- Two Marine Grade Exterior Speakers
- Living Room Carpet in front of Slide Only
- Jiffy Sofa IPO Lower Bunk (30BHBS and 32BHDS, 29BHBS)
- Sliding Glass Patio Door (29FKSS, 29FLSS)
- Double Sink Cover
- Countertop Extension (per model)

Contact your Wildwood dealer for a complete list of options





THE WILDWOOD LA: ELEGANT AND AFFORDABLE

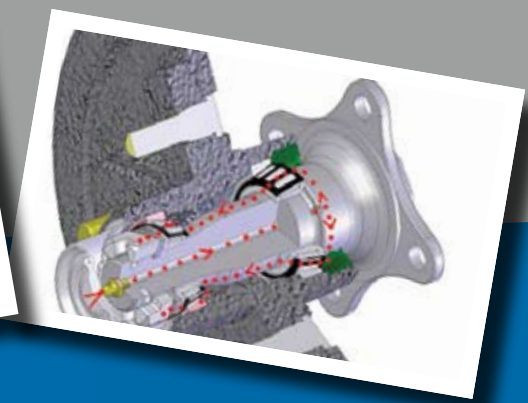
The Wildwood LA (Fiberglass Aluma-Frame Laminated Sidewalls) line is designed for value conscious RV'ers who are seeking the contemporary look of fiberglass with an aluminum framed superstructure and vacuum-bonded laminate side walls. In addition to structural differences from the Wildwood LE line, we've added tons of standard features to take your RV experience to the next level. All Wildwood LA's come standard with radius entry doors, tinted windows, 3/8" walk on roof decking, heated and enclosed underbelly, etched glass in the slide-out cabinets, two interior wood grain options and an upgraded exterior graphics package.

Heated and enclosed underbelly protects the undercarriage and provides a sturdy ride.

The Latest Technology ZX-75 AM/FM Radio with CD and DVD Player, MP-3 & SD Card Hook-Up.

Dometic™ One-Touch Electric Awning. The push of a button Extends and Retracts your Awning.

Super-Lube™ Axles for easy greasing of wheel bearings without disassembly.



292FKDS SLIDE OUT WITH SAGE INTERIOR



WILDWOOD LA PROVIDES YOU WITH THE CONTEMPORARY LOOK OF FIBERGLASS AND ALL THE COMFORTS OF HOME. SIT BACK AND RELAX IN THE SPACIOUS LIVING AREA, GET A GOOD NIGHTS SLEEP IN THE LARGE MASTER BEDROOM, AND REST ASSURED THAT YOUR WILDWOOD IS BUILT WITH QUALITY AND CONVENIENCE IN MIND.

246RLBS BEDROOM WITH SAGE INTERIOR





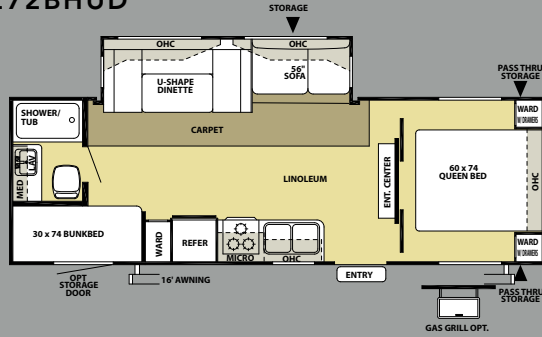
312QBUD Shown with Tan Interior/Fulton Cherry Wood Package

1. Solid Wood Raised Panel Upper Doors
2. (2) Storage Doors at the Base of Dinettes
3. Etched Glass Overhead Doors in Slide-out
4. High-rise Faucet with 60/40 Deep Basin Sink
5. (4) Cube Speaker Sound System
6. Storage Access Under Sofa
7. 67" Interior Height in Slide-out

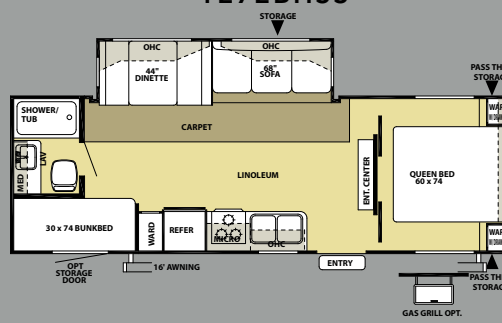
8. ZX-75 Premium Sound System
9. Plank Wood Linoleum Armstrong Flooring
10. Matching Edge Countertops
11. 26-Inch Flatscreen LCD/HD TV (Per Floorplan)
12. Metal Drawer Guides
13. 80" Interior Height

WILDWOOD LA FLOORPLANS

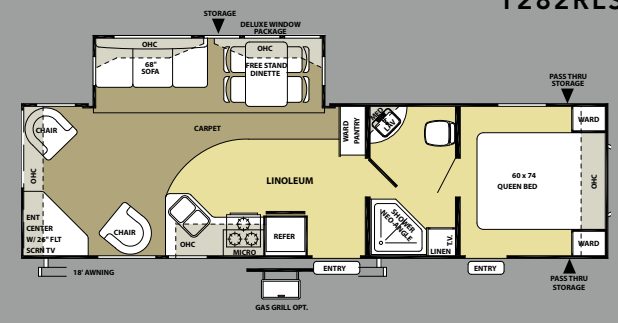
T272BHUD



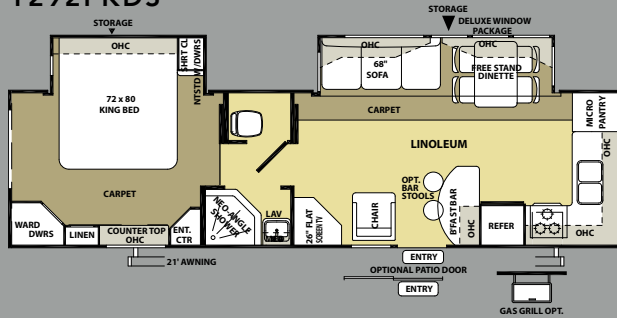
T272BHSS



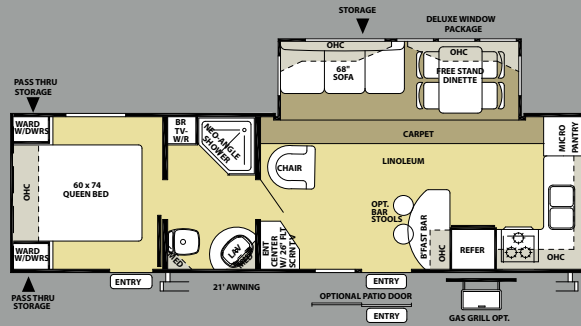
T282RLSS



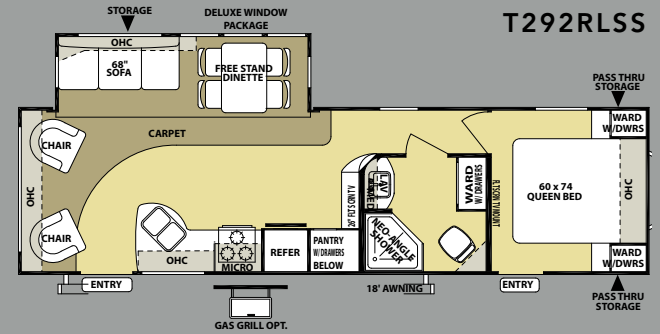
T292FKDS



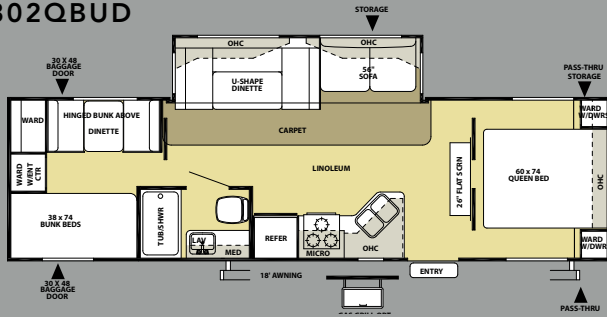
T292FKSS



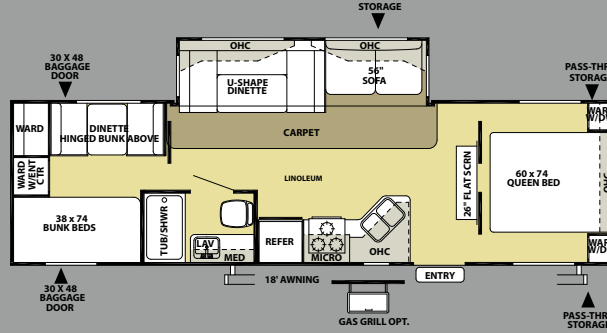
T292RLSS



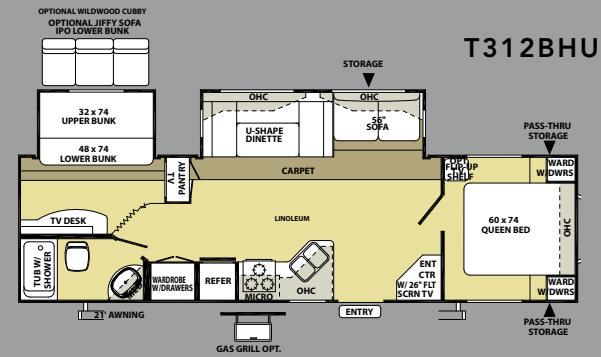
T302QBUD



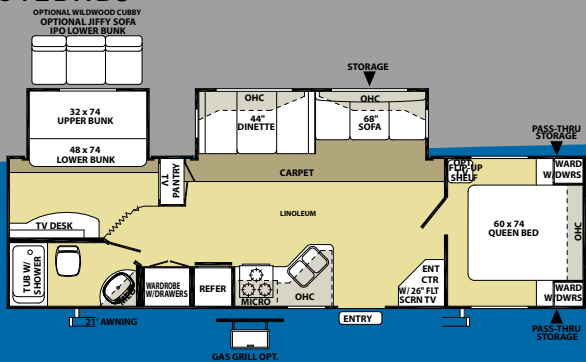
T302QBSS



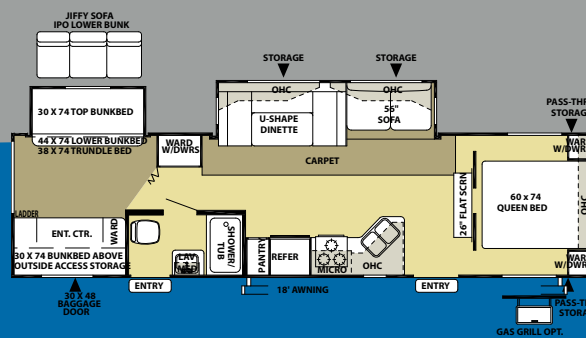
T312BHUD



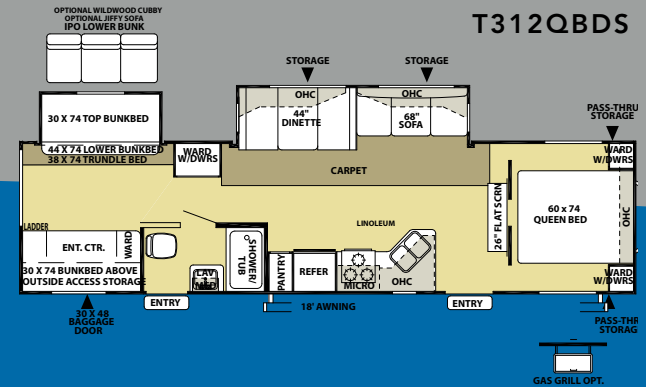
T312BHBS

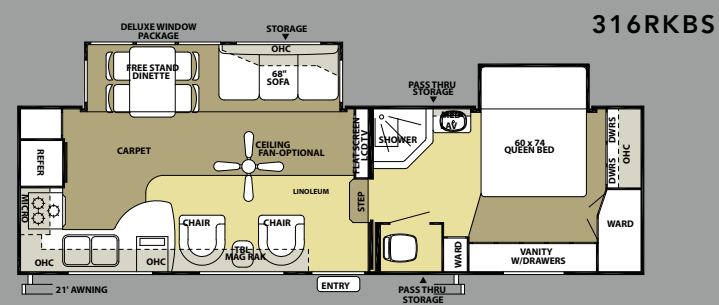
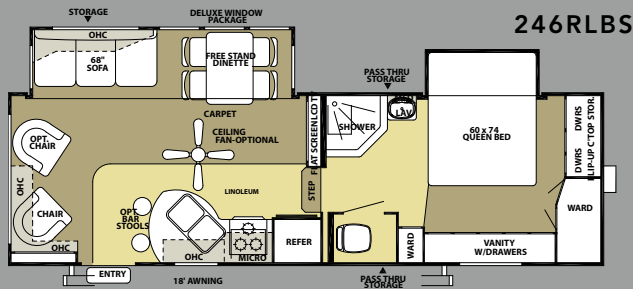


T312QBUD

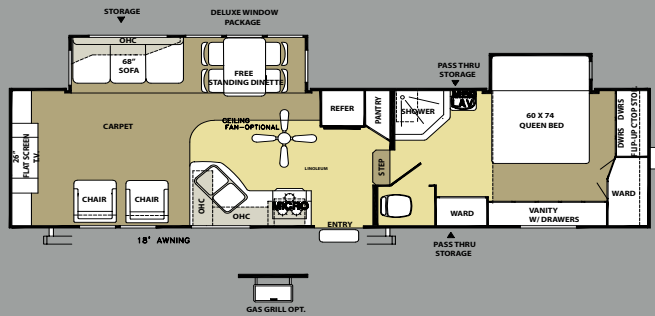


T312QBDS

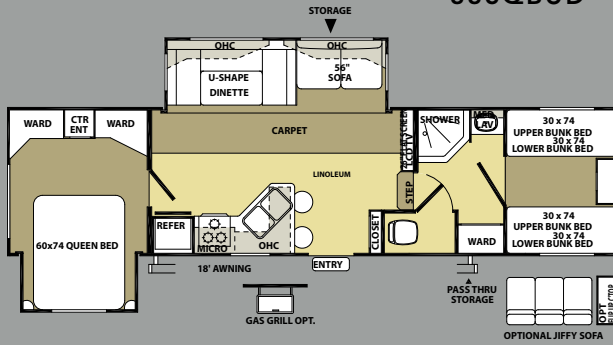




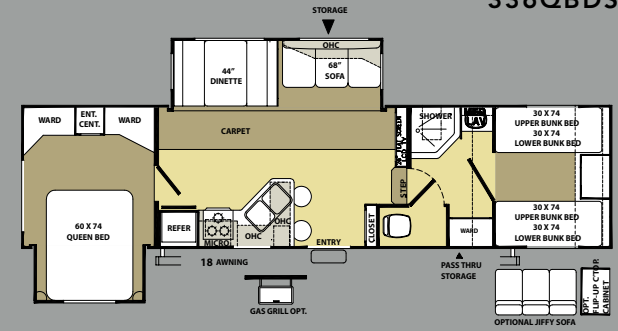
336RLDS



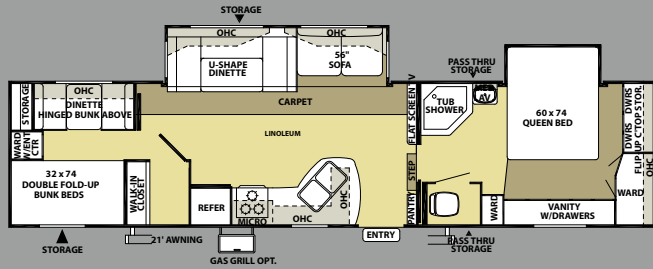
336QBUD



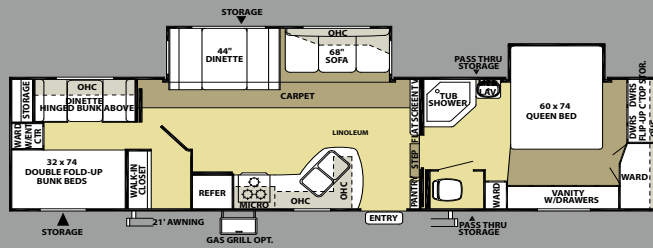
336QBDS



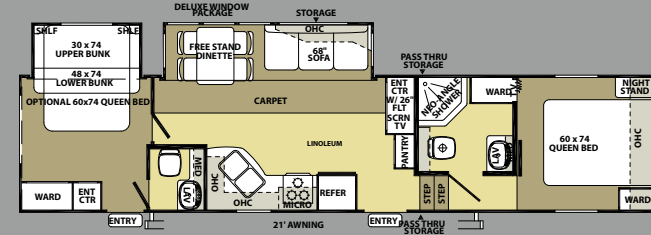
346BHUD



346BHBS



356RBDS



TRAVEL TRAILERS

	272BHUD	272BHSS	282RLSS	292FKDS	292FKSS	292RLSS	302QBUD	302QBSS	312BHUD	312BHBS	312QBUD	312QBDS
Hitch Weight (lb)	750	750	950	1125	905	810	845	845	825	825	820	820
Axle Weight	5290	5290	6115	6547	6060	TBD	6300	6300	6580	6580	7235	7235
Dry Ship Weight	6040	6040	7065	7672	6965	7235	7145	7145	7405	7405	8055	8055
GVWR	7750	7750	11110	11285	11065	10970	11005	11005	10985	10985	10980	10980
CCC (Cargo Capacity)	1651	1651	3986	3554	4041	3676	3801	3801	3521	3521	2466	2866
Ext Length	28' 9"	28' 9"	34' 2"	33' 10"	33' 3"	TBD	33' 6"	33' 6"	34' 2"	34' 2"	35' 6"	35' 6"
Ext Height	11' 1"	11' 1"	11' 1"	11' 1"	11' 1"	11' 1"	11' 1"	11' 1"	11' 1"	11' 1"	11' 1"	11' 1"
Int Height	80"	80"	80"	80"	80"	80"	80"	80"	80"	80"	80"	80"
Fresh Water Cap (gal)	42	42	42	42	42	42	42	42	40	42	42	42
Black Water Cap (gal)	32	32	32	32	32	32	32	32	30	32	32	32
Grey Water Cap (gal)	35	35	35	64	70	70	64	64	30	35	64	35
Tire Size (in)	15"	15"	15"	15"	15"	15"	15"	15"	15"	15"	15"	15"
Awning Size (ft)	16'	16'	21'	12'	21'	18'	18'	18'	21'	21'	21'	21'

FIFTH WHEELS

	246RLBS	316RKBS	336RLDS	336QBUD	336QBDS	346BHUD	346BHBS	356RBDS
Hitch Weight (lb)	900	1575	1765	1635	1635	2030	2030	1420
Axle Weight	6560	6765	6910	7363	7363	7265	7265	7860
Dry Ship Weight	7460	8340	8675	8998	8998	9295	9295	9280
GVWR	11060	11735	11925	11795	11795	12190	12190	11580
CCC (Cargo Capacity)	3541	3336	3250	2738	2738	2836	2836	2240
Ext Length	28' 6"	31' 0"	34' 2"	35' 0"	35' 0"	36' 7"	36' 7"	38' 2"
Ext Height	12' 2"	12' 2"	12' 2"	12' 2"	12' 2"	12' 2"	12' 2"	12' 2"
Int Height	84"	84"	84"	84"	84"	84"	84"	84"
Fresh Water Cap (gal)	42	42	42	42	42	42	42	42
Black Water Cap (gal)	32	32	32	32	32	32	32	64
Grey Water Cap (gal)	35	64	32	64	64	64	64	64
Tire Size (in)	15"	15"	15"	15"	15"	15"	15"	15"
Awning Size (ft)	18'	18'	18'	21'	21'	21'	21'	21'

WILDWOOD LA STANDARD FEATURES

CONSTRUCTION AND EXTERIOR

- Aluminum-framed Vacuum-bonded Laminated Sidewalls
- Tinted Windows
- 3/8" Walk-on Rubber Roof
- 30" Smooth Fiberglass Radius Entry Doors (26" Secondary)
- Diamond Plate Rockguard (Travel Trailers)
- Radius Baggage Doors with Thumb Pulls and Holdbacks
- Swing Arm Entry Assist Handle
- Hose Carrier Bumper with End Caps
- Full Pass Through Storage (per floorplan)
- Dometic™ One Touch Electric Awning
- E-Z Open Entry Step
- Lockable Exterior Range Vent Cover
- Upgraded ABS Fender Skirts
- Tandem Axles w/15" Tires
- Powder Coated I-beam Frame
- Cambered Chassis
- 5/8" 5-Ply Tongue and Groove Plywood Floor Decking
- 2" x 3" Floor Joists 12" on Center
- Water Heater By-pass
- Seamless Roto-cast Holding Tanks
- R-7 Fiberglass Insulation (Floors and Ceiling)
- R-9 Insulation (Sidewalls)
- Power Slide-Out Systems (Flush Floor)
- Seamless Rubber Roof with 12-Year Warranty
- Drip Rails with Downspouts
- 5" Bowed Truss Roof Rafters
- Arched-Mortise & Tenon Wood Cabinet Doors

KITCHEN

- Dometic® Double Door Refrigerator
- Deep Basin 60/40 Residential Sink
- Microwave with Carousel
- 3-Burner, High Output Range
- Range Hood with 12-Volt Exhaust Fan and Light
- Armstrong® ToughGuard™ Linoleum Flooring
- Solid Wood Drawers
- Solid Wood Raised Panel Upper Cabinet Doors
- Pantry Storage (per floorplan)
- Knife Rack
- Flip-Down Silverware Storage under Sink (where applicable)
- Large Overhead Cabinets
- Wall-Mounted Systems Monitor Panel
- High Rise Faucet
- Nickel Hardware
- Pantry Storage (Per Floorplan)
- Knife Rack
- Flip-Down Silverware Storage under Sink (where applicable)
- Drawer Guides

LIVING ROOM

- 69" Interior Slide Height
- Free Standing Dinette w/4 Chairs
- 13,500 BTU Ducted Roof Air Conditioner
- Swivel Rocker(s) (per floorplan)
- Solid Wood Raised Panel Upper Cabinet Doors
- Flip Down Storage under Sofa (n/a sofa hide-a-bed)
- Stain Resistant Carpet w/ Padding
- Solid Wood Drawers
- Extra Large 44" Pedestal Booth Dinette
- Large Dinette Picture Window
- TV Antenna and Booster
- AM/FM Stereo w/ CD/DVD and 4 Cube Speakers
- Cable TV and Satellite Prep
- Extra Large Overhead Cabinets w/ Etched Glass
- Swing-Arm Wall Sconce with Pleated Shade
- 30 or 35K BTU Suburban Forced Air DSI Furnace with Thermostat (Per Floorplan)
- In-Floor Rigid Heat Ducting
- Cabinet Doors on Each Dinette Base

BEDROOM

- Bedroom Carpet (Fifth Wheel Models)
- Strut Lifted Storage Area under Bed
- Oversized Bunks (most models)
- Bedside Wardrobes with Drawers
- Solid Bedroom Privacy Doors (Most Models)

BATHROOM

- Glass Shower Door (Neo-angle Showers)
- 12-Volt Power Bath Roof Exhaust Vent
- Wooden Medicine Cabinet with Mirrored Door
- Thetford® China Foot Flush Toilet

SECURITY AND SAFETY

- LP Leak detector
- Smoke Detector
- Carbon Monoxide Detector
- Fire Extinguisher
- Hitch Light (Travel Trailers)
- Amber Patio Light
- Welded Heavy Duty Safety Chains (Travel Trailers)
- Electric Brakes (all wheels)
- GFI Receptacles

WILDWOOD LA OPTIONS

- Fiberglass Front Cap w/ Docking Light
- Free Standing Dinette w/4 Chairs
- Living Room Ceiling Paddle Fan (5th Wheel Models)
- Slide Room Awning(s)
- Roof Ladder
- Safety Glass Windows
- Extra Large 8 cu ft Double Door Refrigerator
- Exterior LP Gas Grill
- 13,500 or 15,000 BTU Ducted Air w/ Quick Cool
- Outside Shower
- Stabilizer Jacks (Travel Trailer or Fifth Wheel)
- Electric Front Jacks (Fifth Wheel models)
- Double Hide-A-Bed Sofa
- Insulated Storage Plus Door with Jalousie Window (272BHSS)
- Bedroom Flip Table
- Jiffy Sofa IPO Lower Bunk (312BHBS, 312QBBS, 356RBDs)
- Skylight over Tub
- Two Marine Grade Exterior Speakers
- Phone Jack
- Living Room Carpet in front of Slide Only
- Countertop Extension (per model)
- Additional Sink Covers

Contact your Wildwood dealer for a complete list of options

WILDWOOD LA DELUXE PACKAGE

- New Color Coordinated Countertops
- Swing-arm Entry Assist Handle
- Four Cube Speakers in Living Area
- China Foot Flush Toilet
- Super-Lube™ Axle
- High-Rise Faucet in Kitchen
- Cabinet Doors at Each Dinette Base
- Cable and Satellite TV Prep
- Enclosed and Heated Underbelly
- Plank Wood Linoleum Flooring

PRE-DELIVERY INSPECTION FACILITIES



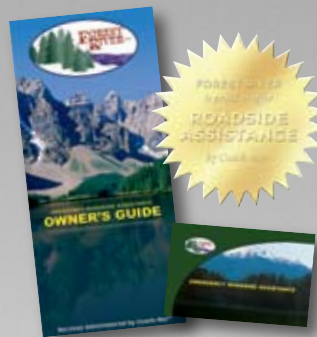
THAT'S 20,000 SQUARE FEET OF QUALITY ASSURANCE.

THE BARE ESSENTIALS FOR A PREMIUM PRODUCT.

Brought online in 2005, Forest River is proud of its state-of-the-art test facility. This beautiful building blends many of the old tried and true methods of testing our diverse types of RVs with new innovative ways of solving quality issues. Being centrally located to most Forest River manufacturing facilities, this 20,000 square foot PDI (Pre-delivery Inspection) test building gives immediate daily feedback to individual managers. This assures the production facilities that nothing has slipped by the plant's quality assurance personnel and the units are "green" and ready to ship.

PEACE OF MIND.

Forest River has yet another exclusive feature to offer: One year of free roadside assistance will be given to every WILDWOOD customer. This is just one more way to say "Thank you" and to ensure an enjoyable traveling experience.



YOUR WILDWOOD DEALER

Forest River Encourages You to Buy Locally

Forest River, Inc. strongly encourages our retail customers to purchase from their local dealership whenever possible due to the following factors:

- Our Dealers are as a rule, independently owned and operated businesses. Outside of those customers they personally sold products to, they are not contractually obligated to perform warranty service on Forest River products that were purchased elsewhere. There may be an occasion that you would be required to return to the point of purchase to satisfy warranty requirements.
- Although many dealerships will eventually service products not purchased at their place of business, they will usually take care of their customers and other Forest River customers who are traveling away from their local dealer as they would their own.
- Local purchases allow a customer to establish a relationship with a dealer close to home. This relationship provides the customer with a convenient location for service and support from a "home town" professional.
- The opportunity for a thorough PDI (Pre Delivery Inspection) and product orientation is an additional benefit of buying from your local dealer. Further providing the opportunity for refresher courses or the ability to get questions answered much more conveniently.
- For our Canadian customers, there are also requirements which must be met to bring an RV purchased out of the country to their home. Although not insurmountable, these requirements may involve such things as additional inspections and certifications, taxes and fees. Your local Canadian Dealer is a professional at meeting these requirements.

Forest River's goal is for all RV Owners to fully enjoy their RV experience. In light of this goal, and considering the advantages of buying local, we encourage you to be thorough when determining what product to purchase and which dealer to purchase it from as both are key to your ultimate satisfaction and the realization of your dreams.



Forest River, Inc.
55470 C.R. 1
Elkhart, IN 46514
(574) 389-4600
www.forestriverinc.com/VCross
www.forestriveraccessories.com