



CONCORD

handle
every
turn
WITH STYLE



COACHMEN®


Coachmen
Life should be so easy.

CONCORD



The spacious and inviting interior of the 301 SS Concord features modern cabinet doors and hardware, removable carpet, an upgraded halogen lighting package and designer interior appointments throughout. (Shown with Brazilian Cherry cabinetry and Elantra Ultraleather decor)

DECOR SELECTIONS

Fabric Key:

A. Main

B. Accent

BRAZILIAN
CHERRY

LAKESIDE
MAPLE

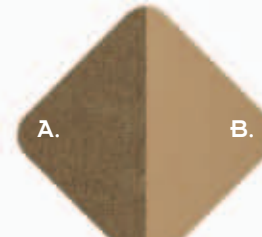
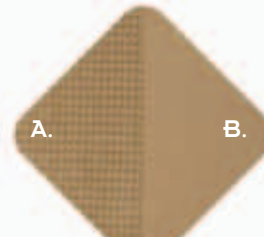
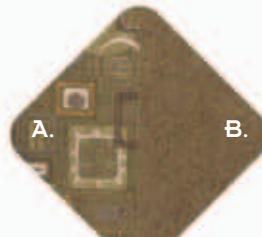
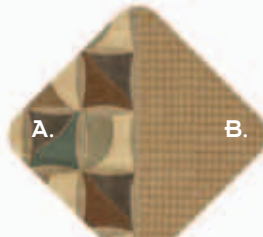
NEWPORT MOCHA
(275 DS, 300 TS)

SAFFRON GEO
(275 DS, 300 TS)

NEWPORT MOCHA
(301 SS)

SAFFRON GEO
(301 SS)

ELANTRA
ULTRALEATHER
(301 SS)



Concord Will Move You with Ease

Concord's impressively modern design is a blend of comfort, agility and Coachmen's legendary attention to quality and detail. With two distinct interior styles, you can choose between contemporary or traditional styling. Luxurious cabinetry, furnishings and fixtures create a relaxing interior living space. The resulting motorhomes are a versatile and inviting home base perfect for today's get-away for a day tailgaters and extended destination travelers.



The Concord automotive style cockpit includes power windows and locks, cruise control, multiple drink holders, dual side airbags, upgraded dash stereo system, and reclining captains chairs.

The upgraded dash stereo features a CD player with a built-in weatherband. It easily adapts to accommodate satellite radio, navigation systems, an iPod® docking station and side view cameras.



Design and Technology

Maneuverability and safety set the standard for Concord's easy to drive, aerodynamic design. From the Firestone Ride-Rite® air assist suspension to an integrated backup monitor that automatically flips out of the dash radio with the touch of a button, Concord provides a smooth, safe ride.



Styling

Concord's modern styling showcases rich cherry or maple cabinetry with contemporary fabrics, cutting edge brushed metal accents and designer fixtures and hardware. Clean halogen lighting illuminates the entire coach. Durable, wear and stain resistant Beauflor® flooring provides a beautiful slip resistant surface in the kitchen and bath area that's easy to clean.

This contemporary Euro chair with a fold-up tray is a handy place to read, craft or access a laptop.

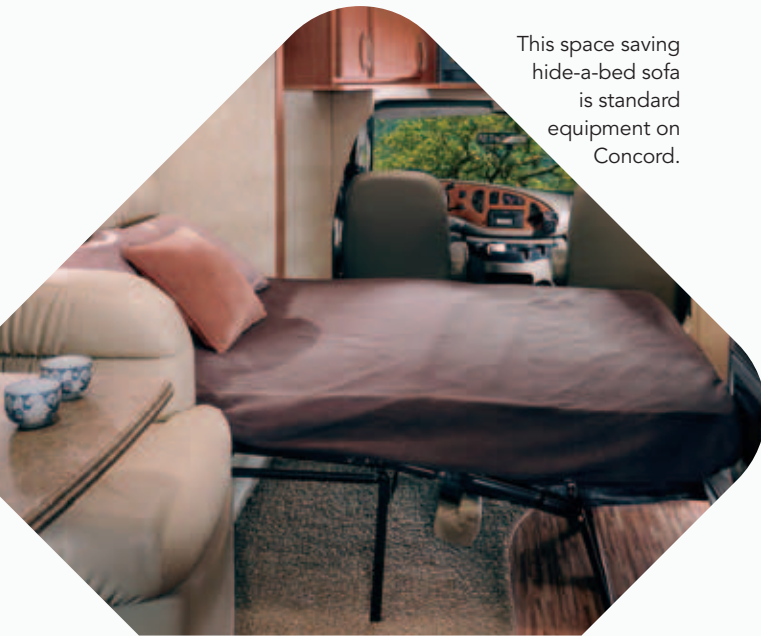


Let the good times roll. The versatile Concord's cut away cab area maximizes living space and provides easy access to the captain's chairs. The traditional styling of the 300 TS shown here features three space expanding sliderooms, along with an ultraleather sofa option. (Shown in Brazilian Cherry cabinetry and Saffron Geo decor)



The coach command center provides a single panel for commonly used gauges and switches.

This space saving hide-a-bed sofa is standard equipment on Concord.





handle
every
turn
WITH STYLE

Travel in comfort with the Concord 301 SS. The living area features the luxurious Elantra Ultra leather booth dinette and sofa upgrade, durable Beauflor® flooring, modern stainless appliances and optional removable carpet.



Concord's designer bedroom is loaded with elegant details, including curvaceous cabinetry, directional lighting and a





CONCORD

FEATURES: S = Standard • O = Optional

Living Appointments

Lakeside Maple cabinetry	S
Brazilian Cherry cabinetry	O
Elantra ultraleather package, includes dinette and sofa (301 SS)	O
Ultraleather hide-a-bed sofa (275 DS, 300 TS)	O
Ultraleather euro chair (275 DS, 301 SS)	S
Hidden cabinet door hinges	S
Full extension ball bearing drawer guides	S
Techwood drawer sides	S
Beauflor® flooring	S
Removable carpet (301 SS)	O
Vinyl soft touch ceiling	S
Designer window treatments and shades	S
Hide-a-bed sofa	S
Lighted cedar lined wardrobe storage	S
Pedestal tables (275 DS)	S
Booth dinette (300 TS, 301 SS)	S
Dream dinette table (300 TS, 301 SS)	S
U-shaped booth dinette (275 DS)	O
Skylight in coach area	S
Designer countertops	S
Sleeping Appointments	
Queen bed with innerspring mattress (pillowtop on 301 SS)	S
Bedspread and pillow shams	S
Privacy drape - cockpit area	S

Dash air conditioning	S
Dash stereo with CD player	S
Power windows and locks	S
Flip up rear view monitor integrated into dash stereo	S
Reclining captains chairs	S
Woodgrain dash applique	S
LCD back-up camera	S
Sideview cameras	O
Heated exterior mirrors with remote	S
Appliances and Accessories	

Cabover entertainment center: 26" LCD TV, DVD player and Bose® Wave® radio	S
19" LCD TV & DVD player - Bedroom	O
Exterior entertainment center	S
Pre-wired for satellite dish	S
iPod® docking station	O
Sirius® radio docking station	O
Omni-directional TV antenna	S
Stainless steel convection microwave and cook top oven	S
Sink covers	S
Double door refrigerator	S

Heating and Air Conditioning	
25,000 BTU furnace (275 DS, 300 TS)	S
35,000 BTU furnace (301 SS)	S
13,500 BTU ducted roof air conditioner	S
Three speed roof fan	S
Wall mounted thermostat	S

Electrical and Lighting

30 amp power cord	S
55 amp electronic converter	S
Auxiliary coach battery	S
Second coach battery	O
Coach battery disconnect	S
GFI circuit	S
Outside 120-volt receptacle	S
Cable TV jacks	S
Patio light	S
4000 Series LP generator	S
3.6 KW gas generator	O
3.6 KW LP generator (diesel units only)	O
Coach command center	S

Plumbing and LP System	
Porcelain toilet with foot flush	S
6-gallon gas/electric E.I. water heater	S
Demand water pump	S
Skylight over shower	S
Glass shower enclosure (n/a 275 DS)	S
One-piece ABS tub surround	S
Outside shower	S
Heated, enclosed holding tanks (n/a on models shipped to Canada)	S
Black tank flusher system	S

Exterior and Construction	
6.0L diesel engine - Ford	O
High visibility LED running lights	S
5,000 lb. towing hitch	S

Rear perimeter caps	S
Full paint exterior graphics (Silver or Sunlit Sand)	O
Partial painted graphics	O
Stainless steel wheel inserts	O
Radial tires	S
Spare tire kit	S
Air assist suspension	S
Laminated floor	S
Laminated sidewalls with AZDEL SuperLite™ substrate	S
Laminated crowned roof	S
Roof ladder	S
Fiberglass running boards	S
Power entrance step	O
Acrylic lighted entry assist handle	S
Patio awning	S
Slideroom awnings	S
CSA Upfit (mandatory for all Canadian provinces)	O

Safety and Security	
LP leak alarm	S
Fire extinguisher	S
Smoke detector	S
Carbon monoxide detector	S
Emergency start switch	S
Driver and passenger air bags	S
Exterior security light	S
Entrance door dead bolt lock	S
Tinted safety glass windows	S
Owner's information package	S



comfortable queen bed. (301 SS)

The modern kitchen is well equipped with a convection microwave oven, sealed burner cooktop range, polished surface countertops and double door refrigerator.



The lighted exterior grab handle is easy to see at night.

outstanding DESIGN



Enjoy the outdoors more with the exterior entertainment center and remote control.

SILVER



CONCORD

275

Chassis	F
Chassis model	E
Engine size (liter)	6
Wheel base	20
Rear axle ratio	4
GVWR	14
CW	11
GCWR	20
Interior Height	6
Exterior Height*	10
Exterior Length	29
Exterior Width	7
Sleeping Capacity	
Exterior Storage Capacity (cu. ft.)	3
Fuel capacity (gal.)	5
Fresh Water Capacity (gal.)	4
Waste Water Capacity (gal.)	2
Grey Water Capacity (gal.)	4
Water heater capacity (gal.)	
Tire Size	LT225/
LP gas capacity (lbs.)	8

*Includes Roof A/C

GVWR (Gross Vehicle Weight Rating):

The maximum permissible weight of the unit, including all accessories. For safety and product performance, do not

GCWR (Gross Combined Weight Rating):

The maximum total weight of the loaded unit, plus a tow vehicle, fuel for each, all other fluids, cargo, occupant



Concord's advanced sidewall design features a high-gloss fiberglass exterior and AZDEL™ SuperLite™ composite substrate. This combines the good looks of a quality exterior with a lightweight, moisture-resistant substrate that won't rot or grow mold like wood.

Cockpit appointments	S
Cruise control	S
Tilt steering wheel	S

Wall-mounted thermostat	S
Power bath vent	S

optional FULL PAINT

SUNLIT SAND



275 DS	300 TS	301 SS
Ford	Ford	Ford
E-45	E-45	E-45
6.8	6.8	6.8
208"	208"	208"
4.56	4.56	4.56
14,500	14,500	14,500
11,750	11,750	11,750
20,000	20,000	20,000
6'6"	6'6"	6'6"
10'3"	10'3"	10'3"
30'8"	30'10"	32'
7'9"	7'9"	7'9"
4	4	4
41	41	100
55	55	55
43	43	36
27	28	27
49	52	28
6	6	6
75R16E	LT225/75R16E	LT225/75R16E
85	85	85

IMPORTANT NOTE:

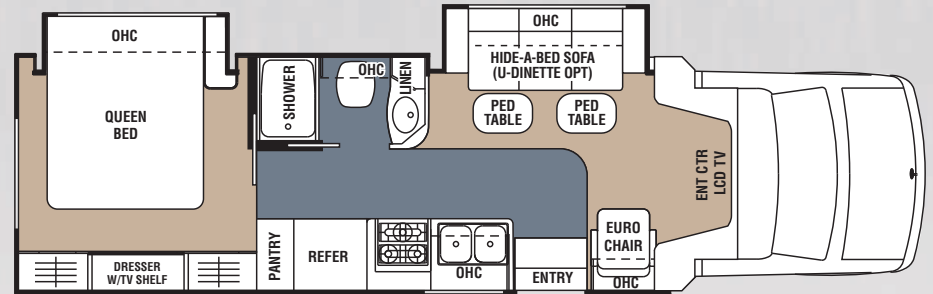
All capacities are approximate, and all dimensions are nominal. Coachmen motorhomes are designed to allow for a wide variety of uses, extended trips with two people or short trips with multiple people. Accordingly, each unit allows ample room for sleeping, seating, fluids and cargo. While the customer is the beneficiary of this design, the customer also bears the responsibility to select the proper combination of passengers, cargo, load, and tow vehicle without exceeding the chassis weight capabilities. Customer may need additional braking capacity to tow loads greater than 1000 lbs. Seat belts should always be worn for passenger safety. Seat belts are provided at most locations to allow convenience in selecting which seat to occupy. However, it is not intended that all seating positions equipped with a seat belt may be occupied while the vehicle is in motion, without regard to other weight factors. All Coachmen motorhomes are designed to ensure that the number of passengers allowed while the vehicle is in motion will always at least equal the stated sleeping capacity. Though extra seat belts may be provided, for your safety and the proper operation of your vehicle, limit your passengers to the number allowed by the Net Carrying Capacity of your vehicle.

the GVW plus all fluids, cargo, optional equipment and accessories. Do not exceed the GVWR.

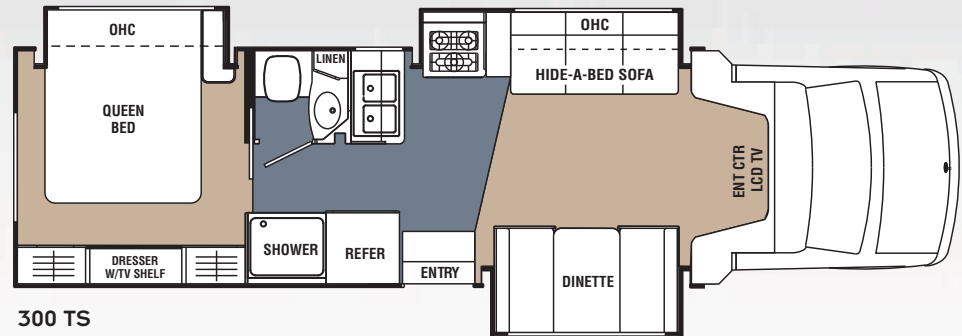
gross weight of the vehicle. This includes the weight of both the unit and the chassis, optional equipment and accessories.

LEGEND:

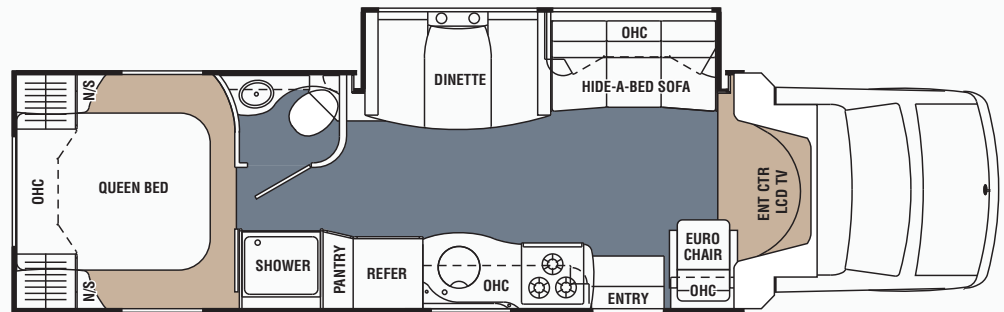
- Carpet
- Linoleum



275 DS



300 TS



301 SS



CONCORD



Easy to Use. Really.

Pete symbolizes our commitment to being your best friend on the road. Like Pete, we're always there to make sure your Coachmen RV is as easy and uncomplicated as possible, so you can escape life's hassles and enjoy RVing more.

Your Coachmen RV will be easy to buy, easy to use and easy to own. That's our promise to you. We accomplish this through clever designs and superior support after the sale.

But the real measure of "easy" is in the countless thoughtful

touches we include throughout your new Coachmen RV.

Easy to Own. Honest.

Our commitment to you is your ongoing satisfaction. Dealers are authorized to solve your problems on the spot and get you on your way without fuss or hassle. Should you ever need service or repair, it is easy to find one of the hundreds of Coachmen dealers or authorized repair centers nationwide.

Our toll-free service hotline **(800-453-6064)** and online service support center put you in touch with a Coachmen service representative, warranty information, maintenance information, troubleshooting tips, dealer locations and other helpful information. Coachmen. You couldn't ask for an easier traveling companion.

Travel Easy™. Always.

RVing is easier with Coachmen's Travel Easy™ Roadside Assistance included for the first year on most new motorized and towable Coachmen RVs*. Administered by Coach-Net®, this service provides you with 24/7 operational, technical and emergency road service coverage. Anywhere. Anytime. Travel Easy™ is the security of knowing that help is an easy phone call away. *See your dealer for details.



Easy to Enjoy. Seriously.

Purchase a new Coachmen RV and receive a free one-year membership in the Coachmen Owner's Association (C.O.A.). You'll enjoy exclusive discounts at campgrounds, theme parks and fuel stations. You'll also receive concierge service 24/7 so you can find and buy what you need, often at big discounts!

Other benefits include trip routing, vacation packages, event reservations, mail forwarding and our helpful owners magazine — Easy RVing. Plus annual camping events, a support network and services for first-time buyers.

Take advantage of your C.O.A. membership today by calling **888-422-2582.**

To see how Coachmen is making the easy life even easier, visit www.easyRVing.com or call **1.800.353.7383.**



Coachmen, P.O. Box 30, Middlebury, IN 46550
800.353.7383 www.coachmenrv.com

All specifications contained herein are based on the latest product information at time of printing. Coachmen reserves the right to make changes in colors, materials, equipment and specifications at any time without notice and assumes no responsibility for any errors in this brochure.