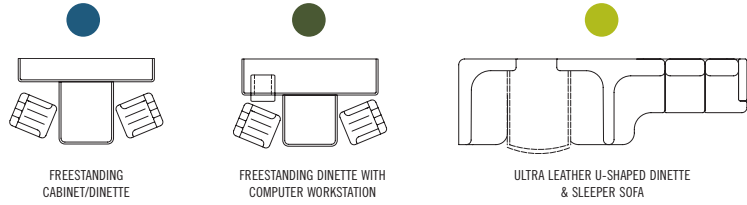
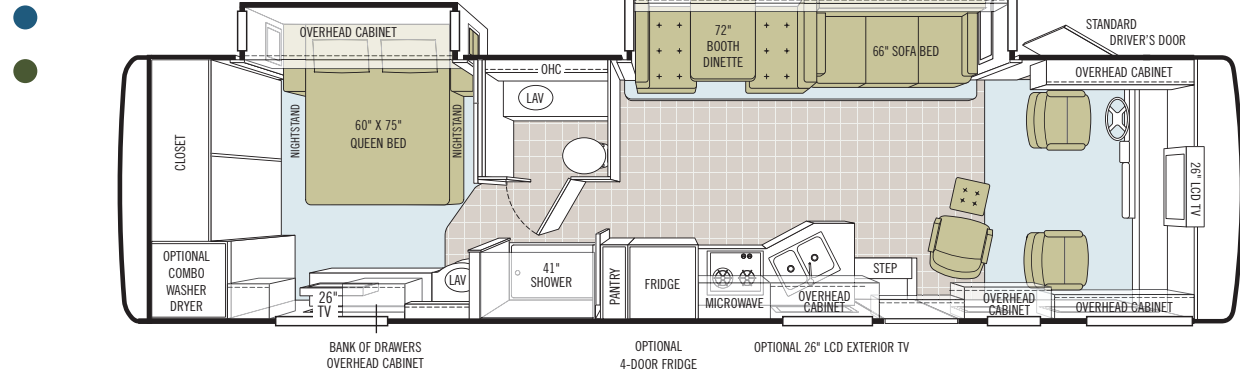


FLOOR PLANS

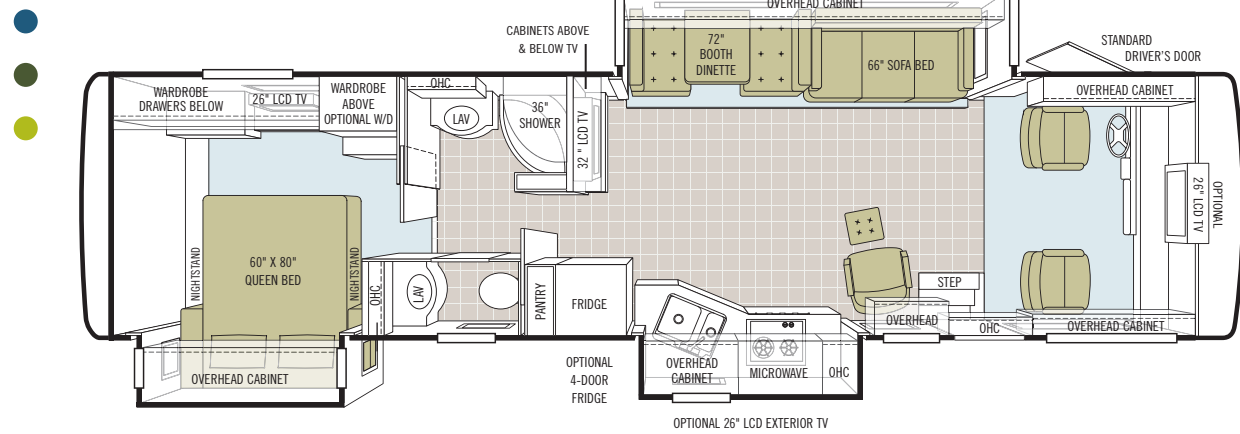
OPTION KEY



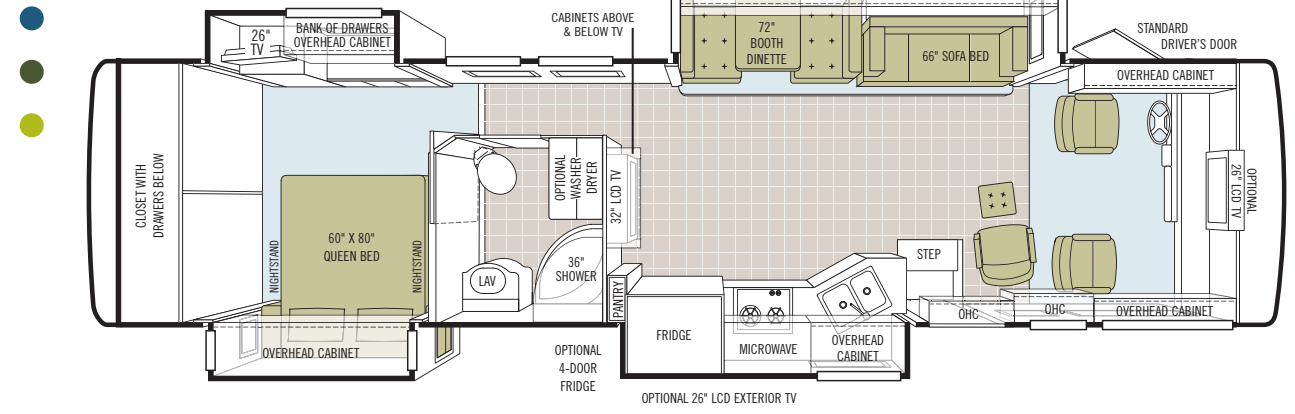
34 XB



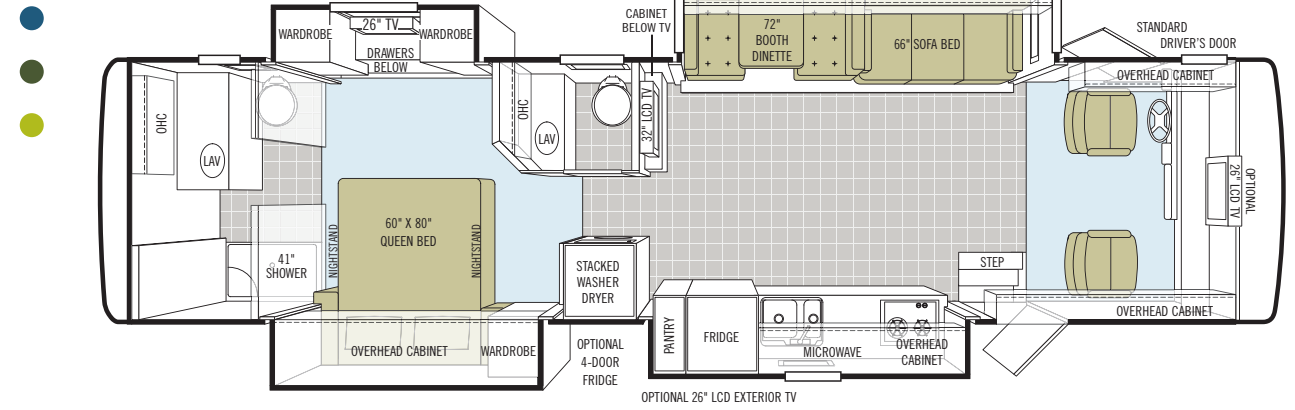
35 TSB



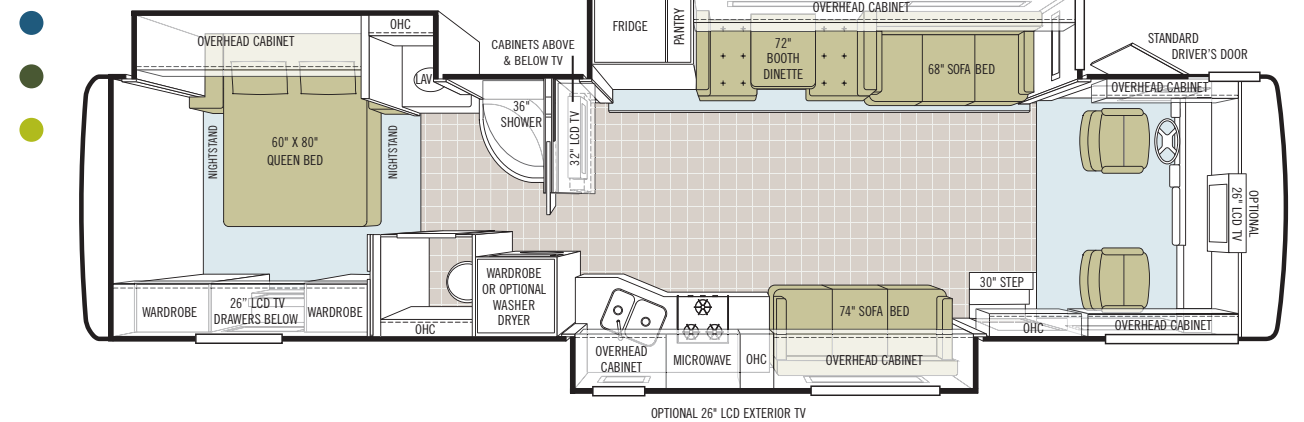
37 QDB



37 QSB

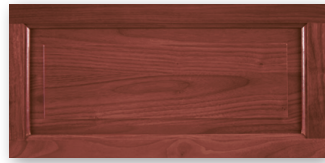


38 TGB



Additional floor plans may be available on our website: [tiffinmotorhomes.com](http://tiffinmotorhomes.com)

CABINETS & FABRICS



Cherry Bark



Medium Alderwood



Carpet

CRYSTAL COVE



Bedroom



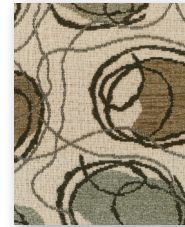
Bedroom Accent



Sofa/Chair



Living Area Accent



Dinette

JAVA



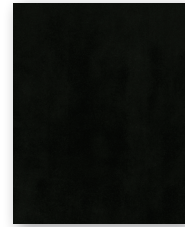
Bedroom



Bedroom Accent



Sofa/Chair



Living Area Accent



Dinette

PEWTER



Bedroom



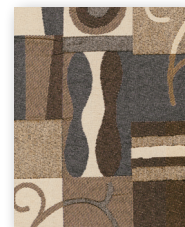
Bedroom Accent



Sofa/Chair



Living Area Accent



Dinette

Cabinet doors are made of solid wood, and all cabinet finishes are available in combination with any fabric scheme.

All options may not be available in every model. Specifications and standard or optional equipment are subject to change without notice or obligation.

FULL BODY PAINT COLORS



GOLD CORAL



MAROON CORAL



SILVER SAND



SUNLIT SAND



NASA



ROCKY MOUNTAIN BROWN

TECHNICAL SPECIFICATIONS

AUTOMOTIVE

STANDARD EQUIPMENT ON ALL MODELS:

- Emergency Start
- Cruise Control

FREIGHTLINER FRONT ENGINE DIESEL	34 XB - 26,000	35 TSB - 26,000	37 QDB - 26,000	37 QSB - 26,000	38 TGB - 26,000	WORKHORSE CHASSIS	34 XB - 22,000	35 TSB - 24,000	FORD CHASSIS	34 XB - 22,000	35 TSB - 24,000	37 QDB - 26,000	37 QSB - 26,000	38 TGB - 26,000
Engine - 340 HP	Cummins ISB	Cummins ISB	Cummins ISB	Cummins ISB	Cummins ISB	Engine - 340 HP	8.1-liter V8	8.1-liter V8	Engine - 362 HP	6.8L Triton V10	6.8L Triton V10	6.8L Triton V10	6.8L Triton V10	6.8L Triton V10
Torque (Lb.-Ft. Max. Net)	620 @ 1600	620 @ 1600	620 @ 1600	620 @ 1600	620 @ 1600	Torque (Lb.-Ft. Max. Net)	455 @ 3200	455 @ 3200	Torque (Lb.-Ft. Max. Net)	457@3250	457@3250	457@3250	457@3250	457@3250
GVWR	26,000 Lb.	26,000 Lb.	26,000 Lb.	26,000 Lb.	26,000 Lb.	GVWR	22,000 Lb.	24,000 Lb.	GVWR	22,000 Lb.	24,000 Lb.	26,000 Lb.	26,000 Lb.	26,000 Lb.
GAWR - Front	10,000 Lb.	10,000 Lb.	10,000 Lb.	10,000 Lb.	10,000 Lb.	GAWR - Front	8,000 Lb.	9,000 Lb.	GAWR - Front	7,500 Lb.	9,000 Lb.	9,000 Lb.	9,000 Lb.	9,000 Lb.
GAWR - Rear	17,000 Lb.	17,000 Lb.	17,000 Lb.	17,000 Lb.	17,000 Lb.	GAWR - Rear	14,500 Lb.	15,500 Lb.	GAWR - Rear	14,500 Lb.	15,500 Lb.	17,500 Lb.	17,500 Lb.	17,500 Lb.
GCWR	30,000 Lb.	30,000 Lb.	30,000 Lb.	30,000 Lb.	30,000 Lb.	GCWR	26,000 Lb.	30,000 Lb.	GCWR	26,000 Lb.	30,000 Lb.	30,000 Lb.	30,000 Lb.	30,000 Lb.
Trailer Hitch Capacity	5,000 Lb.	5,000 Lb.	5,000 Lb.	5,000 Lb.	5,000 Lb.	Trailer Hitch Capacity	5,000 Lb.	5,000 Lb.	Trailer Hitch Capacity	5,000 Lb.	5,000 Lb.	5,000 Lb.	5,000 Lb.	5,000 Lb.
Wheel Base	228"	254"	254"	254"	254"	Wheel Base	228"	254"	Wheel Base	228"	254"	254"	254"	254"
Tire Size	255/70R 22.5	255/70R 22.5	255/70R 22.5	255/70R 22.5	255/70R 22.5	Tire Size	235/80R 22.5	235/80R 22.5	Tire Size	245/70R 22.5	245/70R 22.5	245/70R 22.5	245/70R 22.5	245/70R 22.5
Fuel Tank (Gallons)	80	80	80	80	80	Aluminum Wheels	S	S	Fuel Tank (Gallons)	75	75	75	75	75
Alternator Amps	160	160	160	160	160	Fuel Tank (Gallons)	75	75	Alternator Amps	130	130	130	130	130
Allison Transmission 2100 MH	S	S	S	S	S	Alternator Amps	145	145	Aluminum Wheels	S	S	S	S	S
						Allison Automatic Transmission	S	S	5-speed Automatic with Overdrive	S	S	S	S	S

OVERALL

	34 XB	35 TSB	37 QDB	37 QSB	38 TGB
Overall Length (Approximate)	35' 5"	36' 6"	38' 3"	38' 3"	38' 10"
Overall Height with Roof Air (Maximum)	12' 7"	12' 7"	12' 7"	12' 7"	12' 7"
Interior Height	83.5"	83.5"	83.5"	83.5"	83.5"
Overall Width	101"	101"	101"	101"	101"
Interior Width	96"	96"	96"	96"	96"
Fresh Water (Gallons)	75	75	75	75	75
Black Water (Gallons)	45	45	45	45	45
Grey Water (Gallons)	52	66	52	52	66
LPG Tank (Gallons; can only be filled to 80% capacity)	31.3	31.3	31.3	31.3	31.3
Minimum Garage Height	13'	13'	13'	13'	13'
Basement Storage (Cubic Feet - Approximate)	95	86	82	82	82

STRUCTURAL

STANDARD EQUIPMENT ON ALL MODELS:

- One-piece Moisture Resistant Molded Fiberglass Roof Cap
- Laminated Floor, Sidewall & Roof
- Steel / Aluminum Reinforced Structure

EXTERIOR

STANDARD EQUIPMENT ON ALL MODELS:

- Fiberglass Front & Rear Caps
- Large One-piece Tinted Windshield
- Hydraulic Automatic Leveling Jacks
- 7.0 kw Onan® Generator on Gasoline Chassis
- 6.0 kw Onan® Diesel Generator on FRED Chassis
- Single Motor Intermittent Wiper
- Chrome, Heated Power Mirrors with Remote Adjustment
- Side-view Cameras Activated by Turn Signals
- Entrance Door with Screen Door & Deadbolt
- 1/4" Single Pane Windows
- Exterior Patio Light
- Automatic Patio Awning
- Slide-out Covers
- Wheel Liners
- Double Electric Step
- Lockable Swing-out Storage Doors with Gas Shocks
- Ridged Long-life Storage Boxes
- Luggage Compartment Lights
- A/C Condensation Drains
- Heated Water & Holding Tank Compartment
- Two 6 V Auxiliary Batteries
- 50 Amp Service
- Park Telephone Ready
- Cable Ready TV
- Black Holding Tank Flush System
- Exterior Rinse Hose / Shower
- 110 V Exterior Receptacle
- 110 V / 12 V Converter (55 Amp)
- Undercoating
- BASF Full Body Paint with Protective Film
- Driver's Door with Power Window
- Digital TV Antenna
- CB Antenna
- Power Fantastic® Roof Vent with 3-speed Fan
- Two 13,500 BTU Roof Air Conditioners
- Roof Ladder
- Back-up Camera
- Water Filter

AVAILABLE OPTIONS:	34 XB	35 TSB	37 QDB	37 QSB	38 TGB
Dual Pane Windows (Does not include entrance door)	○	○	○	○	○
Automatic Satellite Dish	○	○	○	○	○
Two 15,000 BTU Roof Air Conditioners with Heat Pump	○	○	○	○	○
Exterior 26" LCD TV	○	○	○	○	○

DRIVER'S COMPARTMENT

STANDARD EQUIPMENT ON ALL MODELS:

- Entry Floor Light
- Snack / Beverage Tray
- Single CD Player & AM / FM Stereo
- 12 V Dash Receptacle
- Tilt Steering Wheel
- Dual Dash Fans
- Color Back-up Monitor
- Fire Extinguisher
- Power Windshield Solar/Privacy Shade
- Driver/Passenger Side Window Solar/Privacy Shades
- Non-power Flexsteel® Cloth Driver/Passenger Seats
- 110 V Receptacle
- Phone / Modem Receptacle

AVAILABLE OPTIONS:	34 XB	35 TSB	37 QDB	37 QSB	38 TGB
Flexsteel® Ultra Leather Power Driver/Passenger Seats	○	○	○	○	○
1800 Watt Inverter	○	○	○	○	○
Satellite Radio (Requires Subscription)	○	○	○	○	○
26" Front Overhead LCD TV	S	○	○	○	○
In-dash Stereo / GPS	○	○	○	○	○

LIVING AREA / DINETTE

STANDARD EQUIPMENT ON ALL MODELS:

- Cloth Air Coil® Hide-a-bed (Driver's Side)
- Booth Dinette
- Carbon Monoxide Detector

AVAILABLE OPTIONS:	34 XB	35 TSB	37 QDB	37 QSB	38 TGB
Ultra Leather Air Coil® Hide-a-bed (Driver's Side)	○	○	○	○	○
Ultra Leather DE Sofa Bed (Passenger's Side)	NA	NA	NA	NA	S
Ultra Leather Magic Bed (Driver's Side)	○	○	○	○	○
Cloth Magic Bed (Driver's Side)	○	○	○	○	○
Cloth DE Sofa Bed (Passenger's Side)	NA	NA	NA	NA	○
32" LCD TV (Mid-section)	NA	S	S	S	S
Leather Euro Recliner	S	S	S	NA	NA
Freestanding Dinette with Shelf & Cabinets	○	○	○	○	○
Ultra Leather U-shaped Dinette / Sleeper Sofa	NA	○	○	○	○
Freestanding Dinette with Computer Workstation	○	○	○	○	○

KITCHEN

STANDARD EQUIPMENT ON ALL MODELS:

- Solid Surface Sink Covers
- Solid Surface Countertops & Backsplash
- Single Lever Sink Faucet with Pullout Sprayer
- Solid Wood Kitchen Table
- 2-burner Cooktop
- 8 Cubic Foot Stainless Steel Refrigerator
- Stainless Steel Double Bowl Kitchen Sink
- Stainless Steel Convection Microwave with Exterior Venting
- Full Extension Ball Bearing Drawer Slides

AVAILABLE OPTIONS:	34 XB	35 TSB	37 QDB	37 QSB	38 TGB
3-burner Cooktop with Oven	○	○	○	○	○
4-door Stainless Steel Refrigerator with Icemaker	○	○	○	○	○

All options may not be available in every model. Specifications and standard or optional equipment are subject to change without notice or obligation.

## BATH

### STANDARD EQUIPMENT ON ALL MODELS:

- Medicine Cabinet
- Fantastic® Fan (Water Closet Only)
- Solid Surface Countertops
- Single Lever Faucet
- Skylight in Shower with Sliding Cover
- China Toilet
- Glass Shower Door
- Solid Surface Sink Bowls
- Water Pump Switch
- Built-in Soap Dispenser

AVAILABLE OPTIONS:	34 XB	35 TSB	37 QDB	37 QSB	38 TGB
Vanity Light	NA	S	S	S	S
41" Molded Fiberglass Shower Surround	S	NA	NA	S	NA
36" Molded Fiberglass Shower with Radius Door	NA	S	S	NA	S

## BEDROOM

### STANDARD EQUIPMENT ON ALL MODELS:

- Bed Comforter with Throw Pillows
- Innerspring Queen Mattress (60" x 80")
- Wall-to-wall Carpeting
- Nightstands with 110 V Receptacles
- Solid Wood Vanity with Storage
- Wardrobe with Automatic Light
- 26" LCD TV
- Ceiling Fan
- LPG Leak Detector
- Laundry Hamper

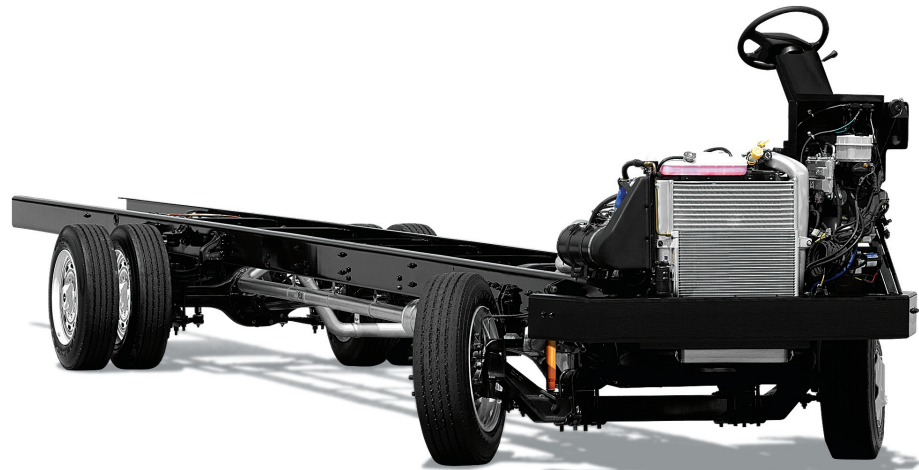
AVAILABLE OPTIONS:	34 XB	35 TSB	37 QDB	37 QSB	38 TGB
Select Comfort™ (Dual Control) Bed System – Queen (60" x 80")	○	○	○	○	○
Memory Foam Mattress – Queen (60" x 80")	○	○	○	○	○

## GENERAL INTERIOR

### STANDARD EQUIPMENT ON ALL MODELS:

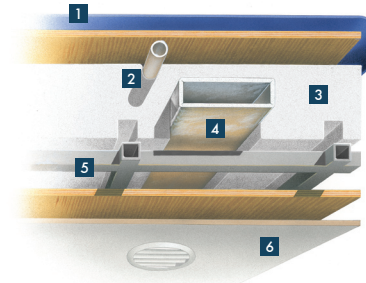
- Medium Alderwood Cabinetry
- Raised Panel Hardwood Cabinet Doors
- Solid Hardwood Cabinet Fascias
- Soft Touch Vinyl Ceilings
- 7' Ceilings
- Full Extension Drawer Slides
- Vinyl Full-tile Flooring
- Scotchgard® Treated Carpet & Fabrics
- Solar / Privacy RollEase® Shades
- Tank Level Monitor System
- 12 V Disconnect Switch
- Smoke Detector
- Home Theater Surround Sound System with Concealed Speakers
- 10-gallon Gas/Electric Water Heater

AVAILABLE OPTIONS:	34 XB	35 TSB	37 QDB	37 QSB	38 TGB
Cherry Bark Cabinetry (Simulated)	○	○	○	○	○
Combo Washer / Dryer	○	○	○	○	○
Stacked Washer / Dryer	NA	NA	NA	○	○
Central Vacuum Cleaner	○	○	○	○	○
One 30,000 & One 20,000 BTU Ducted Furnace	S	NA	NA	NA	NA
Two 30,000 BTU Ducted Furnaces	NA	S	S	S	S



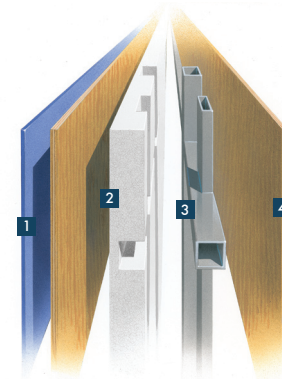
The chassis pictured above was developed by Freightliner Custom Chassis Corporation to offer the long-term dependability of diesel power, along with fuel economy and a high resale value. It features a quiet Cummins ISB engine and an Allison 2100 MH transmission with overdrive for the 34- to 38-ft. models. With a moderate price tag, we think you'll find FRED is a friend indeed.

## CONSTRUCTION SPECIFICATIONS



### ROOF

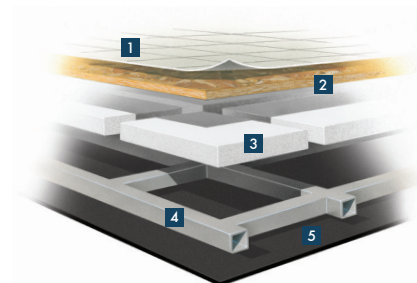
1. One-piece, moisture resistant molded fiberglass roof cap provides insulation and strength and prevents water intrusion
2. A/C Condensation Drainage System that runs internally through the roof insulation and down the sidewalls, redirecting water underneath the motor home
3. 5 1/2" formed insulation
4. Quiet Air Cooling System with return air and foil-wrapped cooling exhaust ducts
5. Durable, tubular aluminum roof skeleton
6. Easy-to-clean soft touch vinyl ceiling panel



### SIDEWALL

1. Gel-coat fiberglass outside wall panel
2. High-performance thermal insulation
3. Durable, yet lightweight, tubular aluminum wall skeleton
4. Decorative inside wall panel

All sidewalls are approximately 2" thick.



### FLOOR

1. Vinyl tile floor bonded to high-impact oriented strand board
2. High-level engineered oriented strand board
3. High-performance thermal insulation
4. Durable, tubular steel floor skeleton
5. Woven moisture barrier material

**10-YEAR LIMITED UNITIZED CONSTRUCTION WARRANTY** The structural integrity of the entire coach is guaranteed for the next 10 years. Warranty includes wall separation and inner frame weakness.

**5-YEAR LIMITED LAMINATION WARRANTY** We guarantee against all exterior fiberglass delamination or wall separation.

TIFFIN MOTORHOMES, INC. 105 2ND STREET NW, RED BAY, AL 35582  
 CALL 256.356.8661 FAX 256.356.8219  
 FOR PARTS AND SERVICE CALL 256.356.0261

For more specifics on what makes a Tiffin Motorhome, go to [tiffinmotorhomes.com](http://tiffinmotorhomes.com)

The following names are registered trademarks of Tiffin Motorhomes: Open Road®, Phaeton®, Allegro®, Allegro RED®, Allegro Bay®, Allegro Bus®, Zephyr®, Roughing It Smoothly®, and Pusher®.