



CRUISER

CrossRoads

CRUISER FIFTH WHEELS



BUILT FOR THE LONG HAUL

CRUISER
CAMPERS & RECREATION



CF 32MK Shown with Persian Sand décor and available free standing table and chairs

The Cruiser's signature interior is known for its spacious comfort and easy-living features. Tuscan maple finish accented with designer fabrics, comfortable lounge chairs, and numerous amenities create beautiful living quarters that rival much costlier units. With sturdy, lightweight aluminum construction, most Cruiser fifth wheels can be towed with a half-ton pick-up truck.

CRUISER WARRANTY

The best warranty in the industry. For details, please visit our web site at www.crossroadsrv.com. We invite you to compare our quality, value, service program and 2+5 Year Warranty plan with those of our competition. You'll find we are unsurpassed in all four.



CF30SK Kitchen

DESIGNER INTERIORS WITH TUSCAN MAPLE FINISH



CF30SK, 30ES, 31RK, 31RE, 32BL, 32CK and 33LF Bedroom slide-out



CF32MK Available fireplace and desk



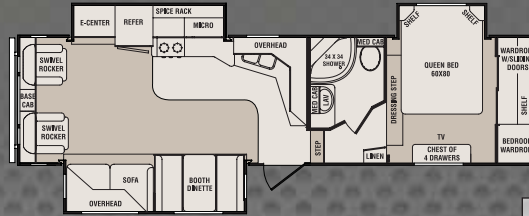
CF32BL Bathroom vanity

FIFTH WHEEL FLOOR PLANS

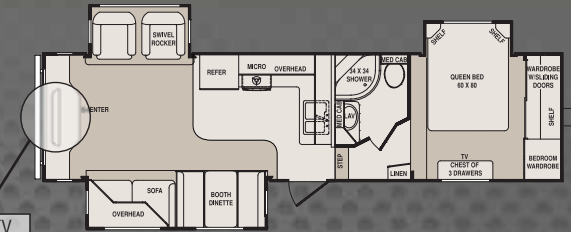
CF28RL



CF30SK



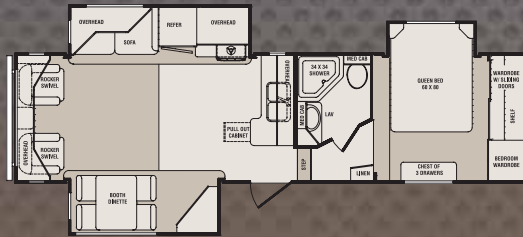
CF31RE



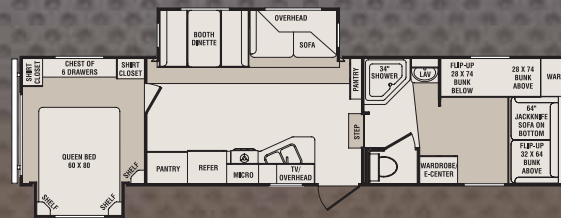
LCD TV STANDARD

CF30ES

NEW

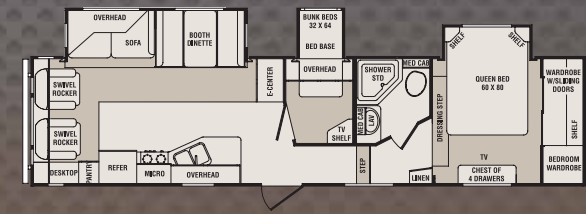


CF31QB

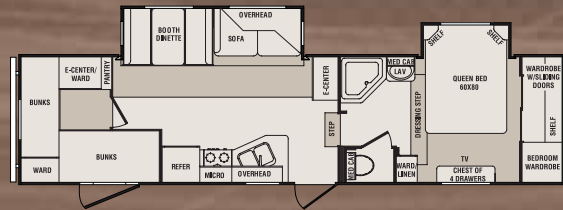


Optional 1/2 bath

CF32BL

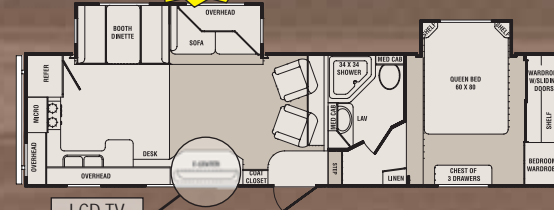


CF30QB



CF31RK

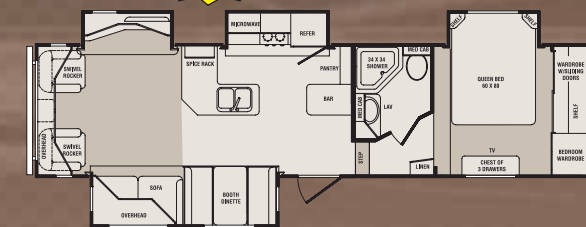
NEW



LCD TV STANDARD

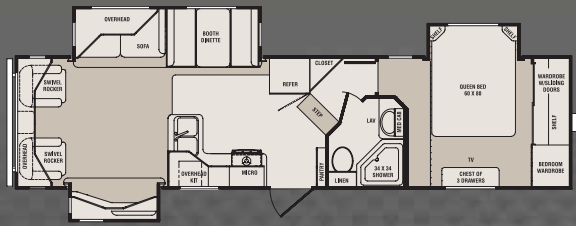
CF32CK

NEW

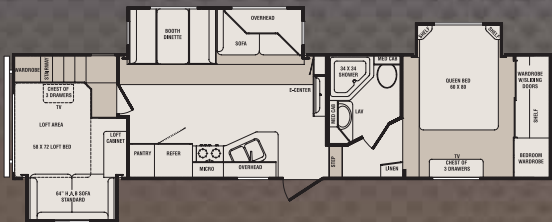


Specifications	CF28RL	CF30ES	CF30QB	CF30SK	CF31QB	CF31RK	CF31RE	CF32BL	CF32CK
Dry Weight	7617	8568	8035	8211	7930	7981	7969	8556	8847
Carrying Capacity	3670	2945	3436	3062	3435	3204	3246	2973	2599
Hitch Weight	1666	1882	1840	1642	1734	1554	1584	1898	1852
Axle Weight	5961	6686	6195	6569	6196	6427	6385	6658	6995
Exterior Length	30' 11"	32' 2"	34' 3"	32' 10"	34' 11"	32' 11"	32' 11"	34' 11"	33' 11"
Exterior Height with A/C	11' 8"	11' 10"	12' 4"	11' 10"	12' 2"	11' 8"	11' 8"	12' 7"	12' 7"
Tire Sizes	225/75R15	225/75R15	225/75R15	225/75R15	225/75R15	225/75R15	225/75R15	225/75R15	225/75R15

CF32MK **NEW**



CF33LF **Fifth Wheel Lofted Model**



Patriot and Provincial Edition Package

(includes Enhancement Package & only available on 28RL, 30SK, 31RE, & 32CK)

- 50 Amp service with bedroom A/C prep
- Mobile comfort pillow top mattress
- Roto Flex pin box
- Power leveling jacks - rear
- PolarTec upgrade insulation package
- Additional graphics
- Corian counter tops in kitchen area
- Stainless steel sink
- Sink covers
- 16" Tires on aluminum rims
- Fiberglass Cap
- Freestanding Table and Chairs
- Lounge Chair & Ottoman
- 10 Gallon Water Heater
- 8 Cu. ft. refrigerator IPO 6 cu. ft.
- Electric awning
- Outside shower
- Spare tire and carrier
- 12 Volt ceiling fan
- Gel glass
- HAB Sofa with inner spring mattress
- HAB Sofa with air mattress (optional)

DÉCOR CHOICES

Persian Sand

Shown on page 2



Thyme



Ocean



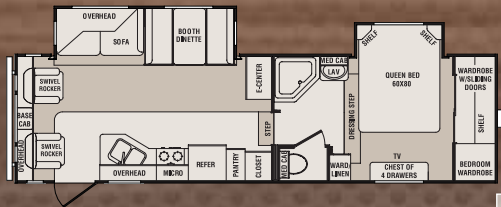
Sangria

Tanks

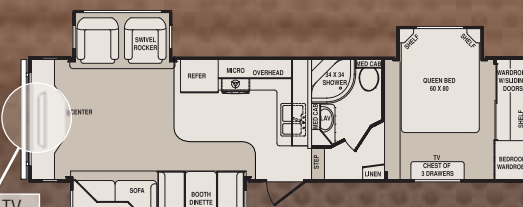
- Fresh water capacity: 58 gallons
- Black water capacity: 40 gallons
- Grey/galley capacity: 80 gallons

PATRIOT/PROVINCIAL FLOOR PLANS

CF28RLP

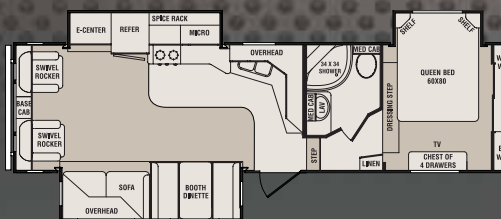


CF31REP

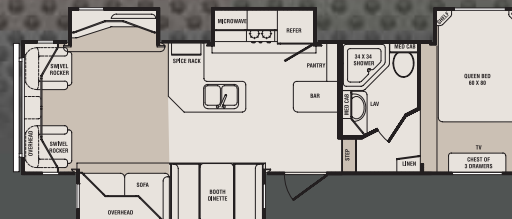


LCD TV STANDARD

CF30SKP



CF32CKP



CF32MK	CF33LF
8532	9117
2905	2604
1806	2136
6726	6981
33' 11"	34' 11"
12' 2"	12' 7"
225/75R15	225/75R15 D

CRUISER FEATURES



Pantry storage for coats and provisions



Skylight with shade (standard in kitchen)



Outlet at awning with switch



Our aluminum floors have 16" OC aluminum studs and can hold 50 – 42 lb. tires for grand total of 2,100 pounds!



Full extension ball bearing drawer guides



Lighted entry step



Day/night shades



DVD/CD/MP3 surround



Extended counter space – up to 22 1/2" (30ES only)



12 volt ceiling fan



Outside speakers



Flip up seat storage



Central control panel

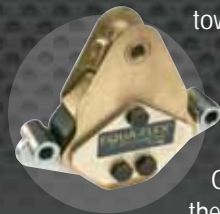
CrossRoads



Dependability that Lasts

What our competitors don't want you to see! Our aluminum frames are bolted not welded. This makes them much stronger and gives them a longer life. Poorly welded frames come apart and are costly to fix.

Standards stated throughout are partial lists only. See your dealer or www.crossroadsrv.com for a complete listing.



Trailair's Equi-Flex™ Equalizer suspension ensures a smoother ride, more stable towing and improved coach and vehicle safety.

On broken pavement at 55mph, Equi-Flex™ reduced G-force up to 89% (360Hz)* at the trailer frame. It's the ultimate rough road remover! (Standard)

CONSTRUCTION STANDARDS

1. One-piece, rolled-edge rubber roof with 12 year warranty
2. 3/8" Plywood roof decking
3. 16" OC Aluminum truss roof rafters and tube floor joists
4. R-27 Fiberglass roof and R-28 floor insulation*
5. Aluminum radius roof transition wrap
6. Full fiberglass front cap
7. 13,500 BTU ducted A/C • 30,000 BTU floor ducted furnace
8. Aluminum tube 16" OC studs for sidewalls, endwalls and slide rooms
9. Thermo-Foil (PolarTec Upgrade Insulation Package - optional)
10. R-15 Sidewall fiberglass insulation*
11. 2 Layers of Luan board - staggered for seamless walls
12. Lamilux fiberglass exterior for easy maintenance
13. 8" Steel I-beam frame (except CF32CK, CF33LF and CF32BL have 10" Steel I-beam frame)
14. 5/8" Lightweight tongue and groove plywood floor decking
15. Residential grade carpet with 1/2" foam carpet pad
16. Linoleum bathroom floor
17. Power front jacks
18. Electric slide system(s) with individual room controls
19. 15" Tires with white spoked rims (aluminum option shown)
20. 5,200 lb Axles
21. Fully enclosed, insulated underbelly with radiant heat

EXTERIOR STANDARDS

22. Tinted glass windows
 23. Scare light
 24. Extended pin box
 25. Swing-out entry assist handle
 26. Roof ladder
 27. Extra large capacity cargo storage
 28. Sunchaser patio awning
 29. 30" Radius entry door with screen
 30. Triple entry step
 31. Dual 30 lb LP tanks
 32. Aluminum bumper cover
 33. Back-up mirror
- EZ lube hubs
Black tank flush
Enclosed gate valves



*R-values based with POLARTEC upgrade insulation package. All R-values are approximated using industry resources and are subject to change without notice.

Living Room Standards

- Booth dinette with drawer storage underneath
- Hide-a-bed sofa with inner spring mattress
- Flush floor slide-out with large dinette window
- Lighted entertainment center
- LCD TV mounting bracket
- Satellite/cable hook-up
- 60 lb ball bearing drawer guides
- 12 volt Dolby digital surround system (MP3/iPod plug in)
- Colored day/night shades
- Lounge chair with foot stool (varies by floor plan)

Kitchen Standards

- 6 cu ft Double door refrigerator
- Self-igniting 22" chef range with 3 burners, cover, hood & microwave
- Formica self-edge countertop
- Solid wood drawer fronts with full extension ball bearing drawer guides
- Wood panel switch key cabinet
- Knife rack
- Skylight

Bedroom Standards

- Deluxe innerspring mattress
- Full 60x80 queen bed
- Lift-up bed with gas struts for extra storage
- 2 Night stands
- Spacious closets
- TV shelf and hook-up
- LCD flip down TV bracket
- Extra tall chest of drawers
- Colored day/night shades

Bathroom Standards

- Corner shower with glass doors in double and triple slide
- Bathroom storage (varies by model)
- Laundry chute to cargo storage (varies by model)
- Skylight in tub/shower
- Water heater bypass and EZ winterize kit
- 6 Gallon gas/electric water heater with DSI
- Porcelain foot flush toilet

Construction Standards

- One-piece, rolled-edge rubber roof with 12 yr warranty
- 3/8" Plywood roof decking
- 16" OC Aluminum truss roof rafters and tube floor joists
- R-14 Fiberglass roof and floor insulation
- Aluminum radius roof transition wrap
- Full fiberglass front cap
- 30,000 BTU floor ducted furnace
- Aluminum tube 16" OC studs for sidewalls, endwalls and slide rooms

- R-7 Sidewall fiberglass insulation
- 2 Layers of Luan board - staggered for seamless walls
- Lamilux fiberglass exterior for easy maintenance
- 8" Steel I-beam frame (except CF32BL 10" Steel I-beam frame)
- 5/8" Lightweight tongue and groove plywood floor decking
- Residential grade carpet with 1/2" foam carpet pad
- Linoleum bathroom floor
- Power front jacks
- Electric slide system(s) with individual room controls
- 15" Tires with white spoked rims (aluminum option shown)
- 5,200 lb Axles
- Fully enclosed, insulated underbelly with radiant heat

Exterior Standards

- Tinted glass windows
- Scare light
- Extended pin box
- Extra large capacity cargo storage
- 30" Radius entry door with screen
- Triple entry step
- Dual 30 lb LP tanks
- Aluminum bumper cover
- EZ lube hubs
- Heated enclosed gate valves
- Water management utility compartment
- Gel coat front cap with enhanced turning radius
- Backup mirror on fifth wheels

Enhancement Package Standards

- Ducted 13,500 BTU A/C
- Patio awning
- Tuscan raised panel arch upper and lower cabinet doors
- Roof ladder
- TV antenna
- AM/FM/CD/DVD player/MP3 and iPod plug in
- Dolby digital surround sound
- Black tank flush
- Swing-out entry assist handle
- 65 Amp converter
- Outdoor speakers
- Black formed refrigerator front
- LP quick disconnect
- Equa-Flex™

your local dealer

Popular Optional Features

- Slide-out awnings
- Rain sensor fans
- Spare tire and carrier
- Chrome center caps
- Rear leveling jacks
- PolarTec upgrade insulation package
- Aluminum rims
- 15,000 BTU A/C
- 10 Gallon gas/electric water heater with DSI
- Outside shower
- LCD TV
- Air mattress hide-a-bed sofa
- Free-standing table and 4 chairs
- Tuscan refrigerator front
- 8 cu ft Double door refrigerator
- Sink covers
- Bi-fold shower door
- 12 volt battery
- Electric awning
- Fireplace w/A & B switch (varies by floor plan)
- 30" stabilizer jacks
- Gel glass
- Safety glass
- 12 volt ceiling fan
- 16" Tires on aluminum rims



CrossRoads

888-226-7496
www.crossroadsrv.com



The company conserving today to protect tomorrow.

facebook

twitter

THOR INDUSTRIES, INC.

Thor Industries' strong financial position and industry leadership are your assurance that we will be here to serve you for years to come.