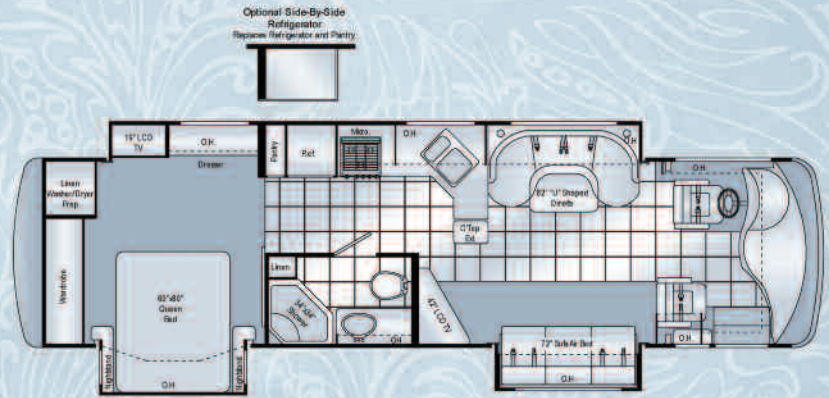




# 2010 ASTORIA

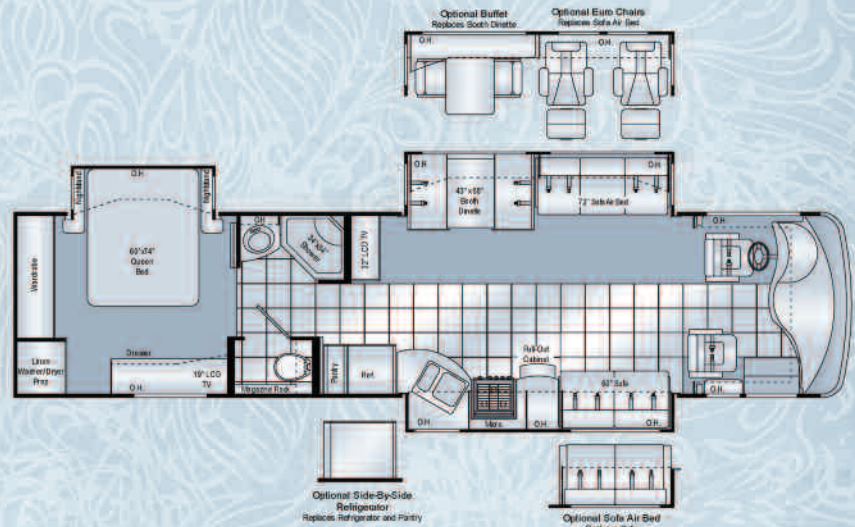
## 3470 ASTORIA

CHASSIS	FREIGHTLINER
WHEELBASE	208
OVERALL LENGTH	35'6"
OVERALL WIDTH	101"
OVERALL HEIGHT WITH AC	12'7"
GVWR	28K
GCWR	33K
FRESH WATER	75 (GAL.)
WATER HEATER	10 (GAL.)
GREY/BLACK WATER	51 (GAL.)
LP (LBS.)	126
SLEEPING CAPACITY	4
EXTERIOR STORAGE	185 (CU. FT.)
INTERIOR DRAWERS	17
INTERIOR DRAWER CAPACITY	15.5 (CU. FT.)
FUEL CAPACITY	100 (APPROX. GAL.)



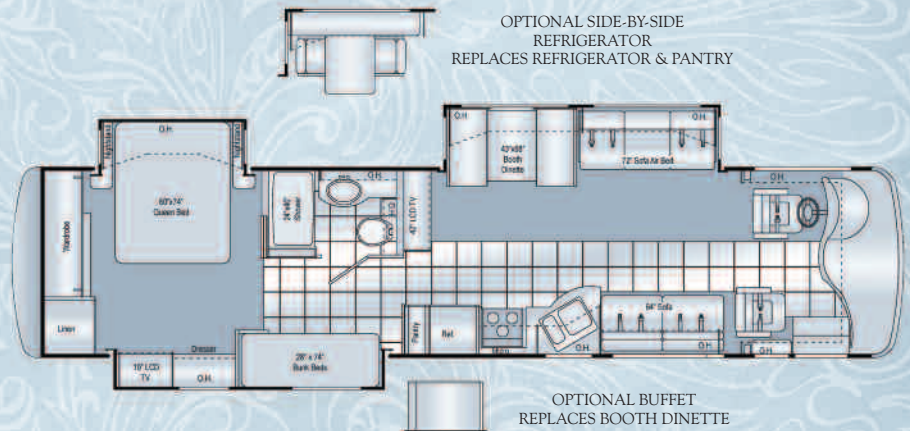
## 3772 ASTORIA

CHASSIS	FREIGHTLINER
WHEELBASE	248
OVERALL LENGTH	38'10"
OVERALL WIDTH	101"
OVERALL HEIGHT WITH AC	12'7"
GVWR	28K
GCWR	33K
FRESH WATER	75 (GAL.)
WATER HEATER	10 (GAL.)
GREY/BLACK WATER	51 (GAL.)
LP (LBS.)	126
SLEEPING CAPACITY	6
EXTERIOR STORAGE	185 (CU. FT.)
INTERIOR DRAWERS	16
INTERIOR DRAWER CAPACITY	18.5 (CU. FT.)
FUEL CAPACITY	100 (APPROX. GAL.)



## 3776 ASTORIA

CHASSIS	FREIGHTLINER
WHEELBASE	248
OVERALL LENGTH	38'10"
OVERALL WIDTH	101"
OVERALL HEIGHT WITH AC	12'7"
GVWR	28K
GCWR	33K
FRESH WATER	75 (GAL.)
WATER HEATER	10 (GAL.)
GREY/BLACK WATER	51 (GAL.)
LP (LBS.)	126
SLEEPING CAPACITY	8
EXTERIOR STORAGE	185 (CU. FT.)
INTERIOR DRAWERS	18
INTERIOR DRAWER CAPACITY	14.5 (CU. FT.)
FUEL CAPACITY	100 (APPROX. GAL.)



ALMOND CREAM



EVENING AUBURN



NIGHT WATCH

### CHASSIS

- Freightliner XC Raised Rail Chassis
- 340-hp Cummins Engine with 660 ft lb of Torque
- 160-amp, 12-volt Alternator
- In-Block, 750 Watt Engine Heater
- 6 Speed Allison MH-2500 Automatic Transmission
- 22.5" Radial Tires
- Stainless Steel Wheel Liners
- Full Air Brakes with Auto Slack Adjusters
- Air-Ride Suspension
- Haldex Purest Air Plus Heated Air Dryer
- Meritor Anti-Lock Brakes
- Exhaust Brake
- Sachs Shock Absorbers
- Under-Hood Light
- Dual Fuel Fills
- Emergency Start Circuit
- Front and Rear Mud Flaps
- Full Width Stainless Stone Guard with DAMON Letters
- 5,000 lb Trailer Hitch
- One Touch Fully Automatic 4 Point Leveling Jacks

### EXTERIOR

- Radius corner domed TPO roof
- Fiberglass Front and Rear Caps
- Tinted One Piece Windshield
- Black Framed Dual Pane Windows
- Full Body Paint with Gel Coat Wall
- Décor: Almond Cream, Evening Auburn, Night Watch
- Color Coordinated Awning Package Including Manual Entry Door Awning and Electric Patio Awning with Remote Control
- Slide Out Topper Awnings
- Fog Lights
- Two Patio Lights (One each side)
- Full Basement, Pass-Through Storage
- Locking Aluminum Compartment Doors
- Side-Hinged Compartment Doors (passenger side)
- Gas Pistons on Exterior Storage Doors
- Lighted Storage Compartments
- Rear Ladder

## STANDARD FEATURES & OPTIONS

### COCKPIT

- Electric Windshield Day/Night Privacy Shade
- Manual Side Shades
- 6 Way Power Nature's Alternative Leather Reclining Driver and Passenger Seats
- 3-Point Wall-Mounted Seat Belts
- Driver and Passenger Overhead Storage Cabinetry
- Drink holders
- Map Lights
- Padded Steering Wheel
- Tilt / Telescoping Steering Column
- Front Mount Power Heated Mirrors
- Premium AM/FM Radio with In-Dash CD Player and 3 Camera Back-up Monitor System with Audio
- Electronic Cruise Control
- Air Horn
- Electronically Controlled Dash Air Conditioning
- Dash Fans

### MULTIMEDIA

- 32" High Definition LCD TV in Living Area (3772)
- 42" High Definition LCD TV in Living Area (3470 and 3776)
- 19" High Definition LCD TV in Bedroom
- 19" High Definition LCD TV in Hallway (3776)
- 5.1 Surround Sound Home Theater with DVD/CD Player and Built-In Digital Tuner
- Cable TV/Satellite Control Center
- Satellite Dish Prep
- Satellite Receiver Pre-Wire in Bedroom

### INTERIORS AND FURNITURE

- Décor: Caribbean Bronze, Royal Crush, Tiger's Eye
- Solid Wood Raised Panel Cabinet Doors Throughout
- Corian Solid Surface Kitchen Countertop, Range Cover, and Sink Covers
- Mirrored Stove Backsplash
- Day/Night Shades in Living Area & Bedroom
- Mini Blinds in Kitchen
- Mini Blinds at Bunk (3776)
- Laminate Tile Floor in Entry, Living Area Aisle, Kitchen, and Bath
- 100% Nylon Carpeting w/ Stain Treatment and Padding
- Fluorescent Lighting in Living Area
- Living Room Pin-Up Lights
- Nature's Alternative Leather Loveseat (Passenger Side) (3772 and 3776)
- Nature's Alternative Leather Sofa/Air Bed (Passenger Side) (3470)
- Nature's Alternative Leather Sofa/Air Bed (Driver Side) (3772 and 3776)
- Dream Dinette with Wood Edge Table (3772 and 3776)
- U-Dinette (3470)
- Queen Bed with Innerspring Mattress
- Bedspread with Throw Pillows
- Bunk Beds (3776)

### KITCHEN

- 8 CuFt Large Flush-Mount, Double-Door Refrigerator w/ Raised Panel Hardwood Front
- Pantry Next to Refrigerator
- 3 Burner Cooktop

- 1.1 cu ft Space Saver Microwave/ Convection Oven
- Single Lever Faucet with Sprayer and Water Filter Faucet

### UTILITIES AND PLUMBING

- Dual 13.5 BTU Ducted Central Air Conditioning
- Fantastic® Power Vent in Kitchen
- Power vent in Bathroom
- 34,000 BTU Floor Ducted Electronic Ignition Furnace
- 50-AMP, 120-volt service
- Onan 6.0 kW Quiet Diesel Generator
- 1800-watt Inverter / 80-amp Converter
- (4) Interstate 6-volt Auxiliary House Batteries
- Battery Disconnect
- Exterior GFCI Receptacle
- Carbon Monoxide, LP Gas and Smoke Detectors
- Monitor Panel with LPG Readout
- 10-gallon Gas/Electric Water Heater with Electric Ignition with Blending Valve
- Water Heater By-Pass Kit
- Washer / Dryer Prep
- Full Height shower with Door
- Skylight in Shower
- Foot flush porcelain toilet with sprayer
- Enclosed Heated Potable and Holding Tanks
- Black Tank Flush
- 3-Way Tank/City Water Fill Valve
- Exterior Shower

### OPTIONS

- Invisible Bra
- 12 CuFt Stainless Steel Four Door Refrigerator with Icemaker (deletes pantry)
- (2) Euro recliners (Driver Side) with Nature's Alternative Sofa/Air Bed (Passenger Side) (3772)
- Buffet with Additional Storage and Four Chairs (2 Fixed & 2 Folding) (3772 & 3776)
- AM/FM stereo / CD/DVD Player in Bedroom
- (2) Heat pumps
- Onan 8.0 kW Quiet Diesel Generator
- CSA Construction and Seal

YOUR LOCAL ASTORIA DEALER:



**MORE DETAILS ONLINE** Visit us online for more information about Damon products. Learn about each of Damon's Gas and Diesel Class-A models as well as the exciting new Avanti fuel-efficient clean diesel. Once online, you can take virtual tours, explore 360° viewable interiors, see additional features and find more for less, at: **ASTORIARV.COM**



P.O. BOX 2888 • ELKHART, IN 46515 • CUSTOMER SERVICE: 800-860-3812 • SALES DEPARTMENT: 800-860-5658 • DAMONRV.COM



Due to constant product improvements, the specifications, component parts and standard/optional equipment are subject to change without notice or obligation. Product photography or diagrams may show equipment that is optional. Damon Motor Coach reserves the right to make changes in prices and models and to discontinue models without notice or obligation. Components, parts or chassis may have been manufactured at times other than the model year indicated. All capacities are approximate and dimensions are nominal. All dry weights are based on standard model features and do not include optional features or equipment. Various RV components and features may differ to conform to local codes. Due to EPA environmental restrictions, engine power and torque ratings may change mid-year.