

The **Standard** for **Excellence**

PHOENIX *Cruiser*



Green Fields

Blue Skies

and miles of open road



New for 2009!

Our Phoenix Cruiser is now available on a Sprinter chassis. See page 6 for details.



Back roads. Small towns. *Places no one else goes.*



Cruisers are built to a high quality standard, easy to drive, aesthetically appealing both inside and out, give good fuel economy, yet are affordable, offering the best value for the dollar of any vehicle in their class.



There is a certain peace of mind amongst Phoenix Cruiser owners. They know we stand behind our product and will make every effort to keep them contented and satisfied owners. Visit your nearest dealer today and become a member of our extended family.





Slideout with Electric Sofa

At the touch of a button, our sofa quickly glides into a full-size bed, either 54"x74" or 60"x74" depending on the model. In the sofa position with the table, it makes a very functional and attractive dinette. The sofa works independently of the slideout and provides a quick and comfortable bed for the evening.



The galley area features cherry or maple accented cabinetry with solid wood raised panel doors, countertop extensions and tables. Solid surface countertops, ball-bearing drawer glides and an oversized solid surface kitchen sink emphasize the thought and quality that goes into each and every Cruiser interior. Depending on which model you choose, queen-size and twin beds are available to make the sleeping area convenient to your individual taste.

Take an adventure.
The world can wait.



Convenience & Utilization

At Phoenix, we strive for convenience and maximum utilization of space with each floor plan. The swivel passenger seat provides that extra space for conversing with visitors or just relaxing. A slide-out butcher block cutting board and two fully-opening drawers on ball-bearing glides located under the range are examples of the creative ways space is utilized in the Cruiser.

Chassis Specifications	2100	2350	2400	2551	2700	2900	2950
Ford Chassis	E-350	E-350	E-350	E-450	E-450	E-450	E-450
Engine	6.8, V-10	6.8, V-10	6.8, V-10	6.8, V-10	6.8, V-10	6.8, V-10	6.8, V-10
Axle Ratio	4.10	4.10	4.10	4.56	4.56	4.56	4.56
Wheel Base	138"	158"	164"	194"	192"	208"	208"
5-Speed Automatic	Yes	Yes	Yes	Yes	Yes	Yes	Yes
GVWR (lbs.)	12,500	12,500	12,500	14,500	14,500	14,500	14,500
GAWR Front (lbs.)	4,600	4,600	4,600	4,600	4,600	4,600	4,600
GAWR Rear (lbs.)	8,500	8,500	8,500	9,500	9,500	9,500	9,500
GCWR (lbs.)	20,000	20,000	20,000	20,450	20,450	20,450	20,450
Dual Wheels	Yes	Yes	Yes	Yes	Yes	Yes	Yes
Tires	LT225/75R16	LT225/75R16	LT225/75R16	LT225/75R16	LT225/75R16	LT225/75R16	LT225/75R16
4-Wheel ABS Brakes	Yes	Yes	Yes	Yes	Yes	Yes	Yes
Exterior Length w/o Ladder	21'2"	23'8"	24'1"	26'5"	27'1"	29'8"	29'8"
Exterior Height w/AC	9'10"	9'10"	9'10"	10'1"	10'1"	10'1"	10'1"
Exterior Width	93"	93"	93"	93"	93"	93"	93"
Interior Height	6'4"	6'4"	6'4"	6'4"	6'4"	6'4"	6'4"
Fuel Capacity (gal.)	55	55	55	55	55	55	55
Fresh Water Cap. (gal.)	31	38	31	45	46	46	46
Waste Water Cap. (gal.)	23	35	23	35	23	23	23
Gray Water Cap. (gal.)	35	23	35	23	35	35	35
L.P. Gas Tank (lbs.)	42	42	42	42	42	42	42
Chassis Warranty	36,000 mi/3 yr.	36,000 mi/3 yr.	36,000 mi/3 yr.	36,000 mi/3 yr.	36,000 mi/3 yr.	36,000 mi/3 yr.	36,000 mi/3 yr.
Powertrain Warranty	60,000 mi/5 yr.	60,000 mi/5 yr.	60,000 mi/5 yr.	60,000 mi/5 yr.	60,000 mi/5 yr.	60,000 mi/5 yr.	60,000 mi/5 yr.

Due to Phoenix USA's continuing product improvement program, actual weights, length and specifications are subject to change without notice or obligation. Photographs may show optional equipment that is not included in the price of the unit.

Standard Features on Phoenix Cruisers

INTERIOR

4 Color Options
 Maple Cabinetry
 Maple Raised Cabinet Doors
 Spacious Wardrobe Closet
 Padded Flooring Throughout
 Day/Night Shades W/Color Coordinated Decorative Valances
 Mounted Coffee Pot
 Solid Wood Tables and Countertop Extensions
 Ball-Bearing Drawer Glides
 Oversized Solid Surface Galley Sink
 Solid Surface Counter Tops

ELECTRICAL & WATER SYSTEMS

Sewage Macerator Pump for Black/Gray Water Holding Tanks
 Black/Gray Water Flush System
 System Monitor Panel
 Heated Holding Tanks
 City Water Hook-up
 30 amp 25-ft. Detachable Power Cord
 2000-Watt Inverter/Charger
 110V GFI Exterior Outlets
 Two Auxiliary Batteries W/Slide-Out Tray
 Cable TV Hook-up
 Prep for Generator
 Prep for Roof Air

HEATING & APPLIANCES

Large Double Door Refrigerator
 Recessed 2-Burner Range
 Power Range Hood
 30,000 BTU Furnace
 6-Gal. Gas Water Heater w/ Electronic Ignition

EXTERIOR

Body Contoured Entry Door W/Dead Bolt & Hide-Away Screen
 Valve Extenders on Dual Wheels
 Stainless Steel Wheel Covers
 Rear Mud Flaps
 Front Chrome Bumper & Grille
 Spare Tire & Rim w/Locking Cover
 Roof Rack & Ladder
 Lighted, Weather Shielded Fiberglass Running Boards
 Slide-out Storage Compartment (n/a 2100, 2400)
 One-Piece Fiberglass Roof
 Premium Graphics Package

CAB AREA

Factory Installed A/C
 Factory Installed AM/FM/CD Stereo
 Driver & Passenger Front Air Bags
 Cruise Control
 Power Steering
 Power Windows, Locks
 Tilt Wheel
 Swivel Front Passenger Seat (optional on 21', 23' & 24' units)
 Pleated Windshield Privacy Wrap

CONSTRUCTION

Aerodynamic Body Styling with Curved Walls
 Smooth Vacu-Bond Laminated Gel-Coat Fiberglass Exterior
 2-1/8" Thick Floor, Tubular Steel Construction
 Strong, Long lasting 1/4" Plastic Fluted Sheet Underbelly
 Rubber Pucks Between Floor & Frame for Smoother Ride and Road Noise Reduction
 Moisture-Proof Plywood as Flooring Sub-base
 1-1/2"-Thick Wall, Aluminum Cage Construction
 Metal Framing Around All Openings (Windows, Doors, etc.)
 Block Foam Insulation in Roof, Floors, and Sidewalls

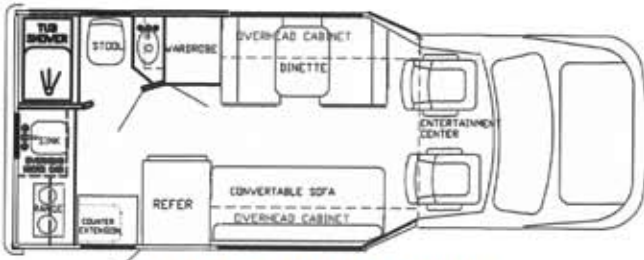
Popular Options

Premium Convenience Package
 Ford 6.0 Diesel Engine
 4KW Onan Generator
 Cherry Cabinetry
 26" LCD TV (Front)
 15" LCD TV (Bedroom)
 Cherry Cabinetry

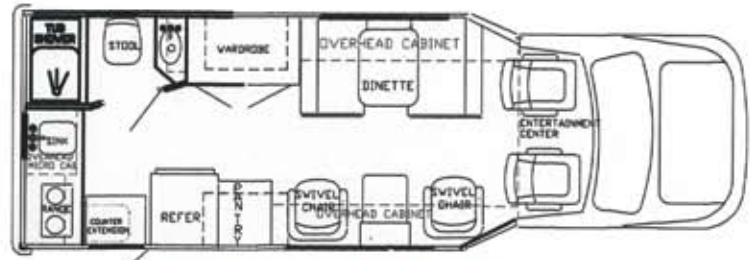
Mirror w/ Compass & Outside Temperature
 Leveling Jacks
 Back Up Monitor
 Insulated Glass
 6-Way Power Seat
 Fantastic Vent
 Slide Out w/Electric Sofa

Lower or Full Body Paint with
 Diamond Shield Protection
 Passenger Swivel Seat (Std. 25', 27' 29')
 Surround Sound w/DVD Player
 Leather Seating
 Box-Type Awning
 **Many other options

Phoenix Cruiser Floor Plans

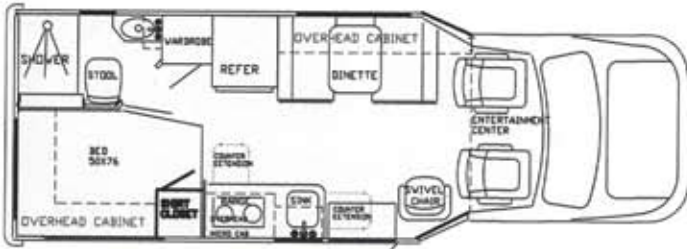


2100 REAR KITCHEN



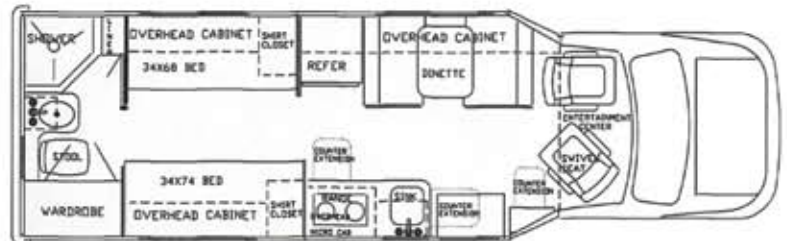
2400 REAR KITCHEN

Available with Sprinter Chassis

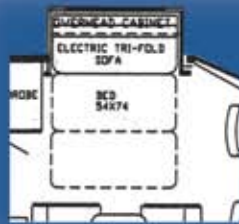


2350 REAR CORNER BED

Available with Sprinter Chassis

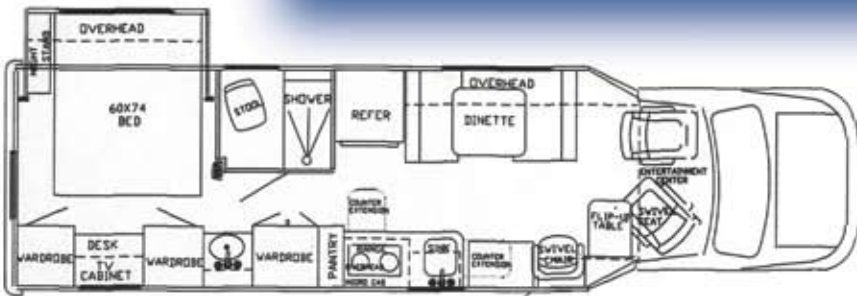


2551 TWIN BED

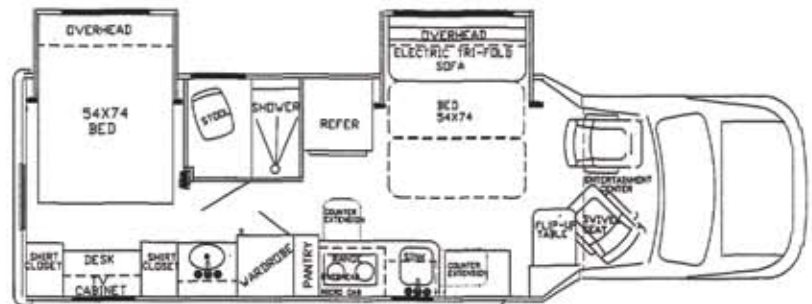


Slideouts

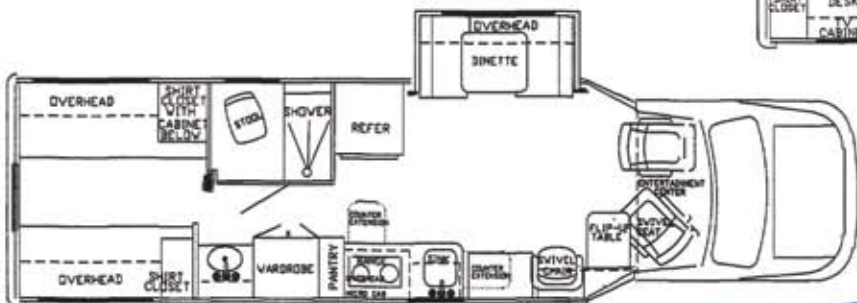
When you're ready to stop for a while, our slideouts expand your unit into an open and comfortable home away from home. All units are available with optional slideouts with a couch that folds into a 54" x 74" bed (60" x 74" on 2400 and 2900 units). Double slideouts are available on our 27-ft. and 29-ft. models.



2900 REAR QUEEN



2700 REAR QUEEN



2950 TWIN BED

Phoenix Cruiser Sprinter Chassis



New for 2009!

In 2009 we are introducing our new lighter-framed Sprinter chassis, powered by a Mercedes-Benz diesel. The Dodge Sprinter chassis provides improved fuel mileage, while still giving you all the great features of our classic Phoenix Cruisers. This is the most aerodynamic B+ motor home on the market!

You'll love the power of the Mercedes-Benz 3.0-liter CDI 6-cylinder, 154-hp turbo diesel engine. The Sprinter series comes standard with a 5-speed automatic transmission with tip shift. Other standard features are Adaptive ESP technology, 4-wheel ABS with skid control and a 180-amp alternator. The trailer hitch is capable of pulling 5,000 pounds.



Chassis Specifications	2350	2400
Sprinter Chassis	3500	3500
Engine (Turbo Diesel)	3.0, V-6	3.0, V-6
Axle Ratio	3.92	3.92
Wheel Base	170"	170"
5-Speed Automatic	Yes	Yes
GVWR (lbs.)	11,030	11,030
GAWR Front (lbs.)	4,410	4,410
GAWR Rear (lbs.)	7,720	7,720
GCWR (lbs.)	15,250	15,250
Dual Wheels	Yes	Yes
Tires	LT215/85R16	LT215/85R16
4-Wheel ABS Brakes	Yes	Yes
Exterior Length w/ Ladder	24'6"	24'6"
Exterior Height w/AC	10'1"	10'1"
Exterior Width	93"	93"
Interior Height	6'4"	6'4"
Fuel Capacity (gal.)	25	25
Fresh Water Cap. (gal.)	38	38
Waste Water Cap. (gal.)	35	35
Gray Water Cap. (gal.)	23	23
L.P. Gas Tank (lbs.)	42	42
Chassis Warranty	36,000 mi/3 yr.	36,000 mi/3 yr.
Engine Warranty	100,000 mi/5 yr.	100,000 mi/5 yr.



The Sprinter series is available with the same options as the regular Cruiser. *In addition, you may choose either a diesel or LP gas powered generator.*

FULL BODY PAINT



RUST



DESERT SAGE



CLASSIC UMBER



SLATE GREY

LOWER BODY PAINT



DESERT SAGE



SLATE GREY



CLASSIC UMBER



RUST

Interior Decors

 Carpet	 Carpet
 Sofa Captain's Chair Barrel Chair Leather Option	 Sofa Captain's Chair Barrel Chair Leather Option
 Solid Surface Countertops	 Solid Surface Countertops
SLATE GREY	AUTUMN RUST
 Carpet	 Carpet
 Sofa Captain's Chair Barrel Chair Leather Option	 Sofa Captain's Chair Barrel Chair Leather Option
 Solid Surface Countertops	 Solid Surface Countertops
CLASSIC UMBER	DESERT SAGE



RV Sani-Con Holding Tank Management System

Introduced in 2006 as standard on all Phoenix Cruisers, the RV Sani-Con System has been a huge success, and is clearly the most modern, sanitary and convenient method for dumping the tanks. The transfer-grinder pump is called a macerator pump. It allows the liquids and solids in the holding tanks to be emptied by 12-volt DC power instead of gravity. As opposed to emptying the tanks downhill only, the RV Sani-Con System can lift the liquid stream as much as 20-feet up into any legal receptacle. The pump has the capacity to discharge the tanks through a 3/4" water hose, if necessary. The Sani-Con name is derived from the sanitary and convenient benefits of the design.



Entry Door

Phoenix Cruiser entry doors are truly in a league of their own. Contoured to match the sidewalls of the unit, it has powder coated components, exterior Gel-Coat fiberglass skin, steel door jamb, aluminum door frame and an anti-rattle retractable screen door. This door is the best RV entry door available and is indicative of the structural integrity found

A higher standard to serve you better

At Phoenix USA we take a lot of pride in setting a standard of excellence for compact motorhomes. We go the extra mile in providing standard equipment not found on competitive units. We pay attention to the small details as we craft each unit. This creates a superior product and is one reason we have one of the highest customer satisfaction ratings in the industry.

Slide-out Storage Compartment

This heavy-duty compartment has a 200-lb. capacity in the slide-out tray. It also has the unique ability to store taller items when needed, or you can fill up the tray with a multitude of smaller items, then lower a hinged deckboard



and double your storage area. It has been engineered to be as water-tight as possible. The compartment utilizes automotive-style locks that provide greater security for the items stored within.

Inverter System

Phoenix installs a 2,000-watt pure sine wave converter in each vehicle. Whereas a converter converts 110-volt to 12-volt, the inverter converts 12-volt to 110-volt. The advantage of an inverter is that the majority of your 110-volt receptacles are live using only your coach batteries. There's no need to run the generator or to be plugged into a power source to have 110-volt service in the vehicle.



Your Phoenix Cruiser Dealer

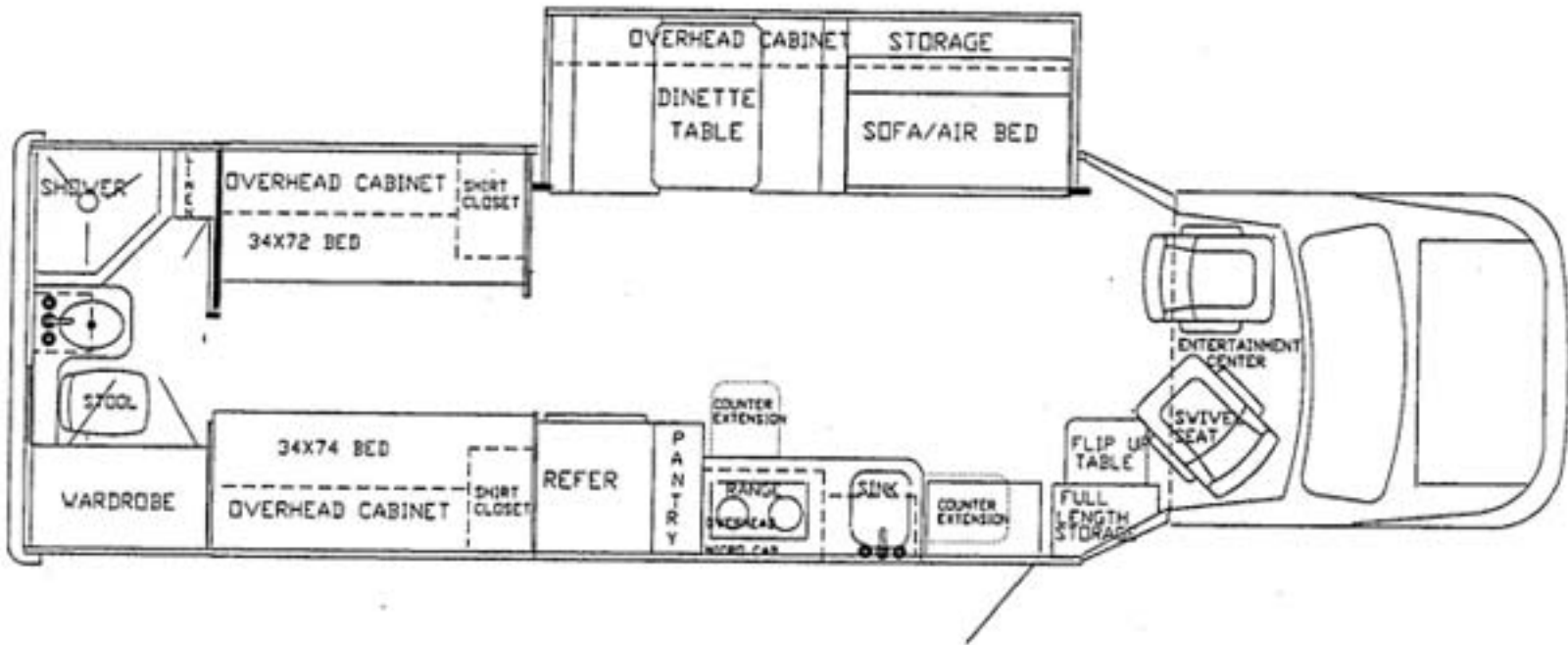
**2601 Marina Drive
Elkhart, IN 46514
574-266-2020
www.phoenixcruiser.com**

The **Standard** for Excellence

PHOENIX *Cruiser*



3100 Twin Beds



New for 2010 - our new 31' unit!
Call for details!

The Standard for Excellence
PHOENIX
Cruiser

Attention is paid to every detail, from the new super-sized slide-out that reclaims valuable floor space to making multi-use features such as the passenger's chair swiveling around for use with the fold-up table top.

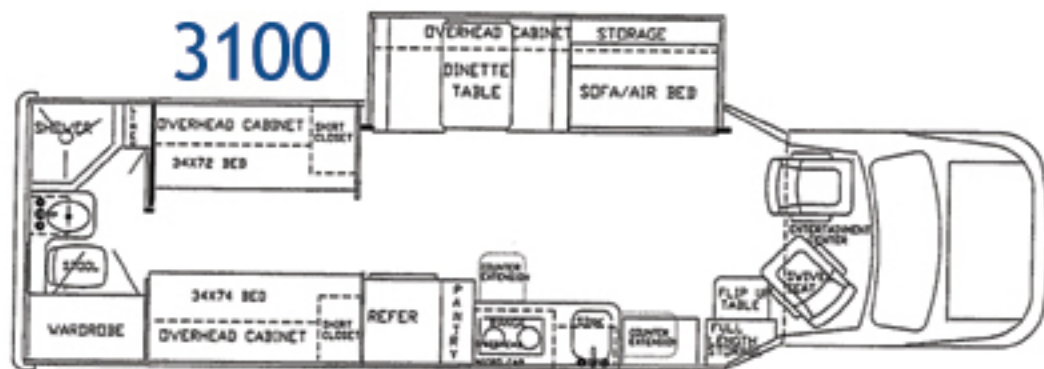


New for 2010--a 31' Cruiser with super-sized slide-out

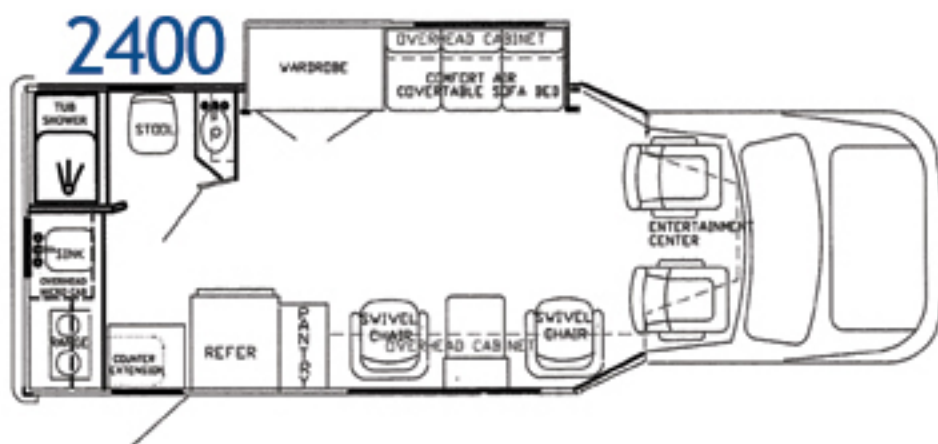


Proving again why we are the standard for excellence. Put yourself in a Phoenix and you can put yourself anywhere.

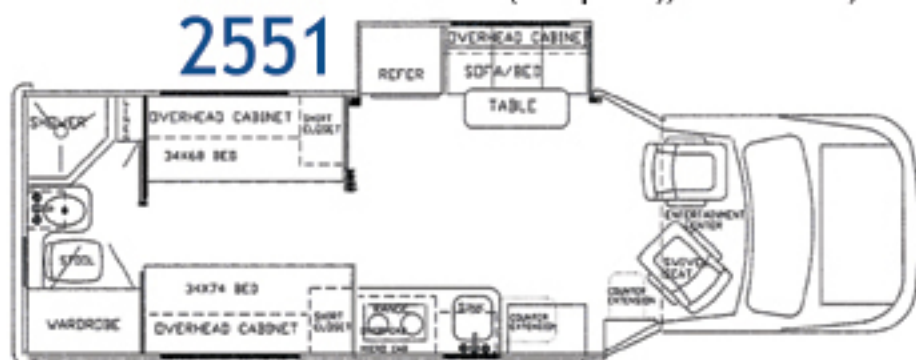
The Standard for Excellence
PHOENIX
Cruiser



Meet our first 31' Cruiser. This 31' unit is on the Ford E-450 chassis and comes standard with twin beds and a slide-out. To see more, visit www.phoenixusarv.com/3100.html.



New for this year, enjoy the extra floor-space in our 2551 or 2400 with the super-sized slide-out, and the added comfort of the convertible sofa/airbed (full queen), to see more, visit www.phoenixcruiser.com



www.phoenixcruiser.com

Visit our Website to see our current inventory of new and used units, to talk to Phoenix Cruiser owners in our forum, or to learn more about our high quality RV's.

877-754-8535