

THE 2010 REVOLUTION LE

REVOLUTION LE

Make an Impression



 **FLEETWOOD RV**



Set New Limits.

The Revolution LE is so much more than a wildly luxurious coach. It's a bold sign of success, independence and innovative style. There's simply no other coach that can match its knock-out good looks, masterful technology and tactile opulence.

The Second Bathroom offers fashionable high-gloss countertops, mirrored cabinetry to hold your grooming supplies, and vanity lighting to help you look your best.

The Bedroom Suite is even sweeter at night, when you're slumbering on the restful queen-size pillowtop innerspring mattress (optional king-size air mattress shown).





The Free-Standing Dinette offers a romantic setting for two. With plush seats that invite lingering and a solid surface tabletop, it feels like a private table at your favorite bistro.

The Galley features stainless steel appliances, including a roomy Whirlpool® residential refrigerator (optional). There's also a GE® convection microwave that cooks faster than a traditional oven.



WHY BUY REVOLUTION LE?

- Striking Style
- Best of Everything
- Grand Appeal
- A Superior Ride
- Impressive Power

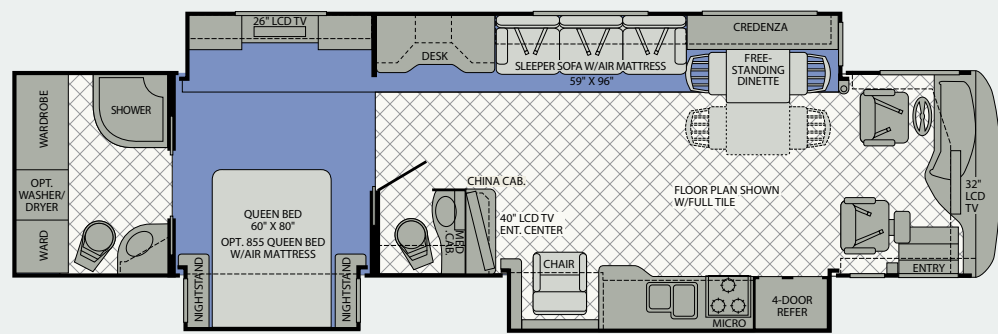
REVOLUTION LE 42T in Aged Bronze interior decor with Mahogany wood cabinetry.



REVOLUTION LE.

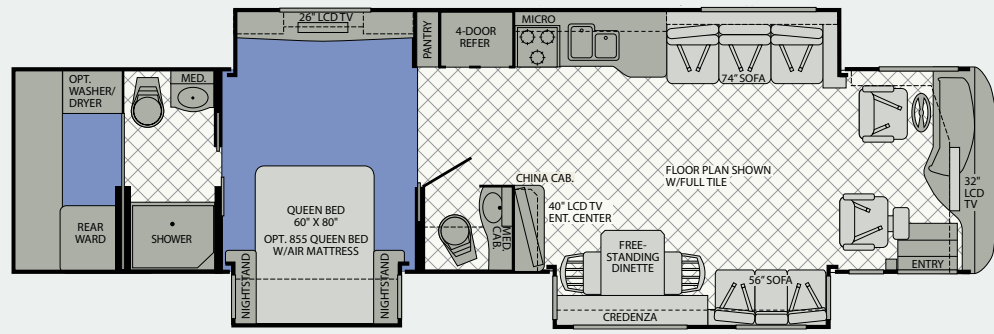
FLOOR PLANS

42K



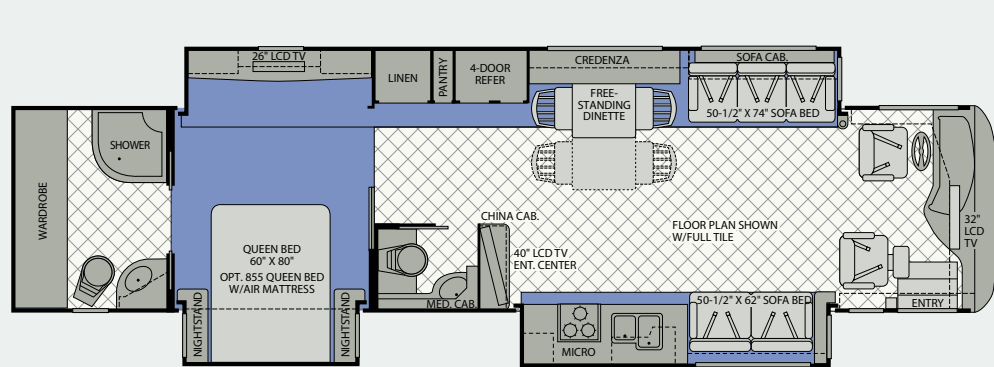
• Available Options: 107, 115, 126, 128, 131, 635, 830, 832, 855, 856

42T



• Available Options: 107, 115, 126, 128, 131, 144, 200, 830, 832, 855, 856

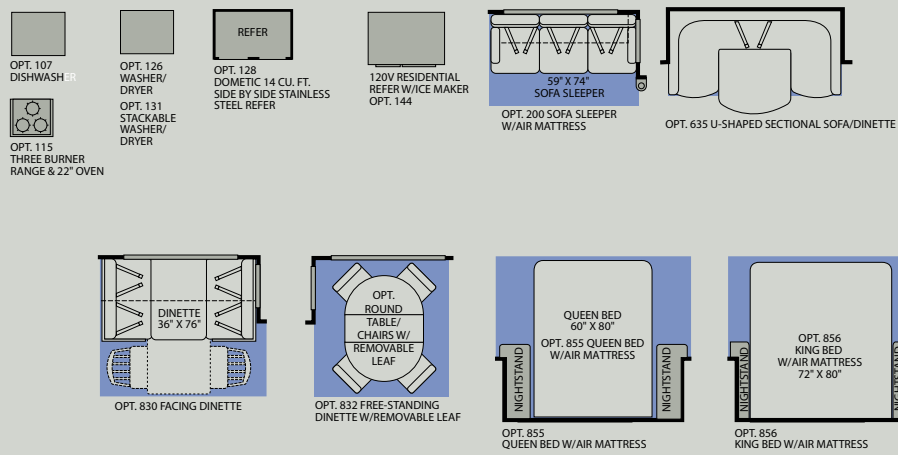
42W



• Available Options: 107, 115, 126, 128, 131, 144, 200, 830, 832, 855, 856

Seatbelt configuration may vary depending on options chosen.

OPTIONS



REVOLUTION LE

WEIGHTS AND MEASUREMENTS

SPARTAN CHASSIS	42K	42T	42W
Engine Displacement (Liters)	8.9	8.9	8.9
Wheelbase (Inches)	302"	302"	302"
GVWR (lbs) ¹	44,600	44,600	44,600
Front GAWR (lbs) ²	14,600	14,600	14,600
Rear GAWR (lbs) ²	20,000	20,000	20,000
Tag Axle (lbs) ²	10,000	10,000	10,000
GCWR (lbs) ³	59,600	59,600	59,600
Hitch Rating Weight (lbs) ¹	15,000	15,000	15,000
Tongue Weight (lbs) ¹	1,500	1,500	1,500
Fuel Capacity (gal)	150	150	150

Liquid Weight Reference:
 Water (gal) = (8.3 lbs/3.8 kgs) Fuel (gal) = (6.1 lbs/2.8 kgs) Propane (gal) = (4.2 lbs/1.9 kgs)
Metric Conversion:
 Multiply pounds x 0.453 to obtain kilograms. Multiply gallons x 3.785 to obtain liters. Multiply liters x 61 to obtain cubic inches.

DIMENSIONS & CAPACITIES	42K	42T	42W
Overall Length ⁴	42' 11.5"	42' 11.5"	42' 11.5"
Overall Height (with A/C)	12' 11.75"	12' 11.75"	12' 11.75"
Overall Width (maximum) ^{5,6}	101"	101"	101"
Interior Height (maximum)	84"	84"	84"
Interior Width (maximum)	96"	96"	96"
Fresh Water Holding Tank (gal)	100	100	100
Grey Water Holding Tank (gal)	70	70	70
Black Water Holding Tank (gal)	40	40	40
Appliance Propane Tank (gal) (WC) ⁷	30.6	30.6	30.6
Water Heater Tank (gal)	10	10	10

Model: Spartan®
Engine: 8.9L Cummins® ISL 400HP
Transmission: Allison® 3000 MH 6-Speed w/Electronic Shifter
Alternator: 170 Amp Leece Neville
Torque: 1200 lb-ft
Tires: Michelin® 295/80R 22.5H

- GVWR (Gross Vehicle Weight Rating) is the maximum permissible weight of this fully loaded motor home. The GVWR is equal to or greater than the sum of the (UUV) unloaded vehicle weight plus the (OCCC) occupant cargo carrying capacity*.
 - GAWR (Gross Axle Weight Rating) is the maximum permissible loaded weight a specific axle is designed to carry.
 - GCWR (Gross Combined Weight Rating) is the value specified by the motor home manufacturer as the maximum allowable loaded weight of this motor home with its towed vehicle. Towing and braking capacities may be different. Refer to Fleetwood and chassis manufacturer's manuals for complete information.
 - Length measured from front bumper to rear bumper (excludes accessories).
 - Excludes safety equipment and awnings.
 - Motor homes feature a body-width over 96" which will restrict your access to certain roads. Before purchasing, you should research any state and/or province road laws which may affect your usage.
 - Tank manufacturer's listed water capacity (WC). Actual propane capacity is 80% of water listing as required by the safety code.
- † The chassis manufacturer recommends the installation of a supplemental brake control system to activate the brakes on the vehicle or trailer you are towing. Hitch receiver ratings expressed are maximum for the hitch receiver installed and may require the purchase of additional equipment that is dependent on the weight of the towed load. Consult with hitch receiver manufacturer for further information.
- * UUV and OCCC are found on the label containing the federal certification tag in each RV.

IMPORTANT — PLEASE READ: Product information, photography and illustrations included in this publication were as accurate as possible at the time of printing. For further product information and changes, please visit our website at www.fleetwoodrv.com or contact your local Fleetwood dealer. Prices, materials, design and specifications are subject to change without notice. All weights, fuel, liquid capacities and dimensions are approximate. Fleetwood has designed its recreational vehicles to provide a variety of uses for its customers. Each vehicle features optimal seating, sleeping, storage and fluid capacities. The user is responsible for selecting the proper combination of loads (i.e. occupants, equipment, fluids, cargo, etc.) to ensure that the vehicle's capacities are not exceeded.



The Pass Through Storage
 Compartments allow you to grab your gear from either side of the coach. Optional slide-out trays provide easy access to items in the back of the compartment. These compartments are insulated and vacu-bonded to ensure your stored items are kept safe.

EXTERIOR GRAPHICS

Black Gold



Gold Starfire



Onyx



Granite Pearl



White Shadow



LIBERTY CHASSIS.

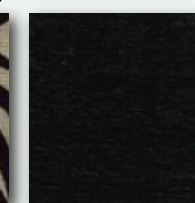
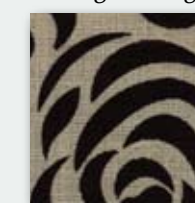
Technology this groundbreaking requires an expert team. That's why American Coach and Spartan decided to join forces – to create a rugged, modular chassis system for an incomparable driving experience. Since 2004, the American Coach line has been built on the Liberty Chassis, an integration of superior American Coach framing technology and the Spartan Chassis modular system, providing the strength and structure for a ride unrivaled in the luxury coach industry. So even coupled with a high-performance diesel engine, you'll enjoy the lowest levels of vibration for the smoothest riding coach on the road. Consider it our salute to integrity.



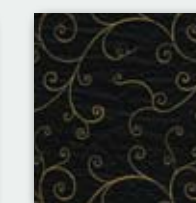
INTERIOR DÉCORS

After Midnight

Living/Dining Room

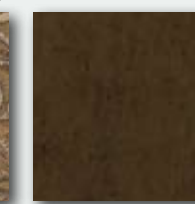
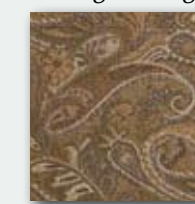


Bedroom

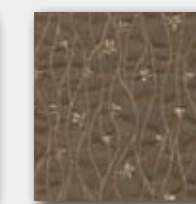


Aged Bronze

Living/Dining Room

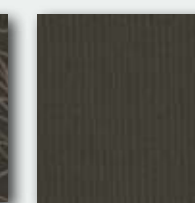
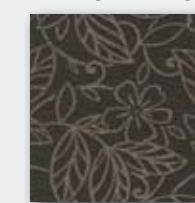


Bedroom

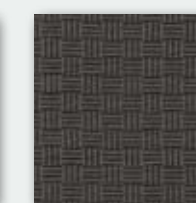


Liquid Silver

Living/Dining Room



Bedroom



Wood Finishes



Mahogany



Regency Cherry

FEATURES AND OPTIONS

STANDARD FEATURES

- INTERIOR THROUGHOUT**
- 25,000/34,000 Btu Dual Furnaces
 - Automatic Generator Start System
 - Water Heater 16 Gallon Output
 - 84" Interior Ceiling Height
 - Choice of Regency Cherry or Rich Mahogany Wood Finish
 - Complete TuffPEX Plumbing System
 - Manual Double Roller Blind
 - Deluxe Roller Bearing, Full Extension Drawer Guides & Transit-Ship Locks
 - Denso Climate Control System
 - Three Roof Mounted A/C High Efficiency w/Front Solar Panel
 - Fabrica® Carpeting
 - Hardwood Cabinet Doors/Drawers
 - Padded Vinyl Ceiling
 - Power Vent w/Rain Sensors (All Vents, Galley, Bath & Shower Area)
 - Raised Panel Upper Cabinet Doors
 - Solid Wood Drawers
 - Centralized Control Panel Display at Entry
 - Tank Level Monitor (Interior Only)
 - Tile Floor at Front Entry
 - Whole Coach Water Filtration System
 - Wood Finish Return Air Intake for Furnace
- DRIVER CONVENIENCE**
- (2) Auxiliary 12V Dash Receptacles
 - Power Shades/Blinds
 - Adjustable Brake & Throttle Pedals
 - Auxiliary Fog Lights
 - Auxiliary Driving Lights
 - Auxiliary Start Switch
 - Battery Disconnect System
 - CB Radio Ready
 - Driver/Front Passenger Map Lights
 - Flexsteel® Ultraleather™ Driver Seat w/Manual Lumbar/6 Way Power/Heat/Adjustable Armrest (Integrated Lap & Shoulder Belts)
 - Wider Flexsteel® Ultraleather™ Passenger Seat w/6 Way Power/Electric Footrest (Integrated Lap & Shoulder Belts)
 - I.C.C. Light Switch
 - Electric Step Well Cover w/Lighted Step Well
 - Rear Vision System w/One-Way Audio (Camera & Monitor)
 - Rear Vision System w/Side Cameras
 - Soft Touch Smart Wheel
 - Tilt & Telescoping Steering Wheel w/Adjustable Dash Gauge Package
 - AM/FM/CD Radio w/Color Back Up Monitor & Touch Screen GPS

GALLEY

- Base Cabinet Storage for the Range & Galley Sink Covers
- Ceramic Tile Backsplash
- Ceramic Tile Flooring w/Accent (Laid Diagonally)
- GE® Convection Microwave Oven w/Built-in Range Hood
- Solid Surface Dinette Table, 2 Free-Standing Chairs & 2 Folding Chairs
- Faucet w/Pull-Out Sprayer
- Manual Double Roller Blind
- Large 70/30 Split Solid Surface Sink
- Domestic® 12 cu.ft. 4 Door Stainless Steel Refrigerator w/Ice Maker & Water Dispenser
- Recessed 3 Sealed Burners Cook Top (Stainless Steel)
- Satin Polished Solid Surface Galley Counter Top
- Satin Polished Solid Surface Range & Sink Cvr's
- Coffered Ceilings w/Halogen Lighting on Dimmer Switch

LIVING ROOM

- Sony® 32" LCD HDTV in Front Overhead
- Flexsteel® Ultraleather™ Love Seat
- Flexsteel® Ultraleather™ Sofa Bed
- Sony® Home Theater System w/DVD Player & 5.1 Dolby® Surround Sound Speakers
- TracVision® Domed Digital Satellite System
- Coffered Ceilings w/Halogen Lighting on Dimmer Switch

BEDROOM

- Sony® DVD Player
- Sony® 26" LCD HDTV
- 60" X 80" Queen Bed Mattress
- Cedar Lined Wardrobe
- Manual Double Roller Blinds
- DSS 2nd Receiver Ready Bdrm Area (Coax Cable)
- Satin Polished Solid Surface Nightstand & Base Cabinet Counter Tops
- Coffered Ceilings w/Halogen Lighting on Dimmer Switch

BATHROOM

- Ceramic Tile Flooring
- Deluxe Medicine Cabinet
- Moen® Hand Held Shower Head
- Residential China Bowl Flush Toilet w/Hand Sprayer (Select Models)
- Satin Polished Solid Surface Lavy Top w/Porcelain Bowl & Moen® Faucet
- Shower Door w/Obscure Glass
- Skylight in Shower
- 4 Point Automatic Levelers
- Allison® 3000 MH, 6 Speed Automatic Trans.
- Anti-Lock Brake System (ABS)
- Full Air Brakes w/Automatic Slack Adjusters
- I-Beam Suspension w/Bilstein® Shocks
- Side Radiator Configuration
- Spartan® Modular Chassis w/400HP ISL Cummins® Engine

SAFETY/CONVENIENCE

- Multiple Seatbelt Locations
- Carbon Monoxide Detector/Alarm
- Centralized Control Panel Display Center
- Energy Management System (EMS) w/Soft

- Start
 - Fire Extinguisher
 - Propane Detector/Alarm
 - Smoke Detector/Alarm
- EXTERIOR THROUGHOUT**
- (4) Aluminum Wheels
 - (4) Mud Flaps
 - 2000 Watt Pure Sine Wave Inverter w/Remote
 - In-Motion TracVision® Domed Digital Satellite System
 - Rear Rock Guard w/Logo
 - Diamond Shield Clear Front Protective Mask
 - Domestic® 12 cu.ft. 4 Door Stainless Steel Refrigerator w/Ice Maker & Water Dispenser
 - Battery Monitor
 - "Bus Style" Large One-Piece Windshield
 - Chrome "Bus Style" Heated Mirrors w/Remote Adjustment & Turn Signal Indicators
 - Domed One-Piece Fiberglass Roof w/Radius Corners
 - Dual Holding Tank San-T-Flush™ System
 - Dual Pane Windows w/Screens
 - Electric Patio Awning
 - Electronic Battery Control Center Energy Management System (50 Amp)
 - Exterior Convenience Light at Dump Valves
 - Fiberglass Front/Rear Caps w/High Mounted Taillights
 - Electric Front Entry Door Awning
 - Large Windshield Washer Bottle w/Sprayer Nozzles
 - Multi Point Water Pump Switching
 - Onan® 8.0 KW Quiet Diesel Generator
 - Sound Insulation Front & Rear
 - Top Mounted Intermittent Wipers
 - Utility Light Front & Rear
 - Variable Speed Aquatec Water Pump
 - Window Awnings (Bedroom & Front Roadside Windows)
 - Sloped Roof on Slide out Boxes
 - Surge Guard RV Power Protection
- AUTOMOTIVE**
- (2) 12V Chassis Batteries (1000 Cold Cranking Amps Each Battery)
 - (4) 6 Volt House Maintenance Free AGM Batteries (Group 27)
 - 15,000 lb Weight Distributing Hitch Receiver w/7 Pin Electrical Hook-up¹
 - 160 Amp Alternator
 - 4 Point Automatic Levelers
 - Allison® 3000 MH, 6 Speed Automatic Trans.
 - Anti-Lock Brake System (ABS)
 - Full Air Brakes w/Automatic Slack Adjusters
 - I-Beam Suspension w/Bilstein® Shocks
 - Side Radiator Configuration
 - Spartan® Modular Chassis w/400HP ISL Cummins® Engine

BODY STRUCTURE

- Aluminum Interlocking Floor/Wall/Ceiling Framing
 - Heated Water & Holding Tank Compartments
 - Liberty Chassis w/Patent Pending (Fleetwood RV Exclusive)
 - Steel Surface on Frnt Bulkhead/Engine Frame
 - Vacu-bond® Insulated Storage Area
 - Vacu-bond® Sidewall, Roof & Floor Construction
- SAFETY/CONVENIENCE**
- (4) Turn Signal Lamps on Each Side of Coach
 - 30" Front Entry Door w/Dead Bolt
 - Front & Rear Docking Lights
 - Illuminated Entry Assist Handle
 - Porch Light
 - Power Entry Step
 - Automotive Safety Glass
 - Daytime Running Lights
- STORAGE**
- Ext Side Hinged Storage Doors (Select Doors)
 - Lighted Luggage Compartments
 - Pass-Through Compartments

OPTIONS

- INTERIOR**
- Full Tile Flooring
 - Central Vacuum System w/Accessory Kit
 - Vented Washer/Dryer Unit
 - Stackable Washer/Dryer Unit (Select Models)
 - Hydronic Heating - Aqua Hot (Select Models)
- LIVING ROOM**
- Ultraleather™ Sofa Sleeper w/Air Mattress
 - U-Shaped Dinette (42K)
- GALLEY**
- Domestic® Side-by-Side Stainless Steel Refrigerator
 - Facing Dinette
 - Free-Standing Table & Chairs
 - Recessed 3 Sealed Burner, Stainless Steel Range w/Oven & Solid Surface Covers
 - Fisher & Paykel DishDrawer®
 - Residential Refer (Select Models)
- BEDROOM**
- Dual Control Queen Air Mattress
 - Dual Control King Air Mattress (Select Models)
- EXTERIOR**
- (5) Exterior Graphics Packages (Electric Awning Included in Graphic Package)
 - D Tray Package (1) 54" & (1) 36"
 - E Tray Package (1) 54" & (1) 90"
 - Electric Power Cord Reel (standard on 42')
 - Wast Management Pump
 - Sidewall Exterior Entertainment Center (32" Sony®)

REVOLUTION LE

Class A Diesel

RV OWNERCARE*

Limited one-year/15,000-mile coach warranty and three-year/45,000-mile structural warranty, whichever occurs first, and it is fully transferable for the first 12 months. RV OWNERCARE is one of the RV industry's most comprehensive programs and includes systems, appliances, components and construction, with no deductible and no service charge. RV OWNERCARE coverage is provided from a company that will be around in the future to service your needs. See your nearest Fleetwood RV dealer for a full explanation of benefits and restrictions.

CONTACT US

To locate a dealer near you, visit our website at www.fleetwoodrv.com or call 1-800-444-4905. We can also be contacted at Fleetwood RV Customer Relations, P.O. Box 1007, Decatur, IN 46733.

FLEETWOOD RV MOTOR HOME CLUBS

As a Fleetwood owner, you're invited to become a member of several Fleetwood RV motor home clubs. Becoming a club member is the perfect way to meet other Fleetwood owners who love to travel across America and share in the RV lifestyle. Visit our website at www.fleetwoodrv.com/owners_clubs to learn more and join the fun.

YOUR LOCAL FLEETWOOD RV DEALER IS:



*For complete info see your Fleetwood RV dealer.

©2009. Fleetwood RV, Inc.
Printed in the USA. Inventory Control Number REV10B1, 11/09.
Model Year 2010, First Edition.

IMPORTANT—PLEASE READ

Product information, photography and illustrations included in this publication were as accurate as possible at the time of printing. For further product information and changes, please visit our website at www.fleetwoodrv.com or contact your local Fleetwood RV dealer. Prices, materials, design and specifications are subject to change without notice. All weights, fuel, liquid capacities and dimensions are approximate. Fleetwood RV has designed its recreational vehicles to provide a variety of uses for customers. Each vehicle features optimal seating, sleeping, storage and fluid capacities. The user is responsible for selecting the proper combination of loads (i.e. occupants, equipment, fluids, cargo, etc.) to ensure that the vehicle's capacities are not exceeded.

WHY FLEETWOOD RV?



Quality

There's no cutting corners. Skilled craftsmen build every Fleetwood RV for maximum durability and longevity.



Trust

More people trust Fleetwood RV. After all, we've spent the last 60 years perfecting RVs, earning the loyalty of generations of RVers.



Passion

We're truly passionate about the RV lifestyle. Fleetwood RV was founded by RV enthusiasts, and that tradition continues today.



Safety

You've got precious cargo. So we've engineered dozens of innovative safety features into our motor homes to give you more peace of mind.



Service

Help is nearby. When you need an upgrade or repair, you'll find Fleetwood RV dealers all across North America ready to assist you.



Warranty

Exclusive RV ownercare warranty. See your Fleetwood dealer for details.

