

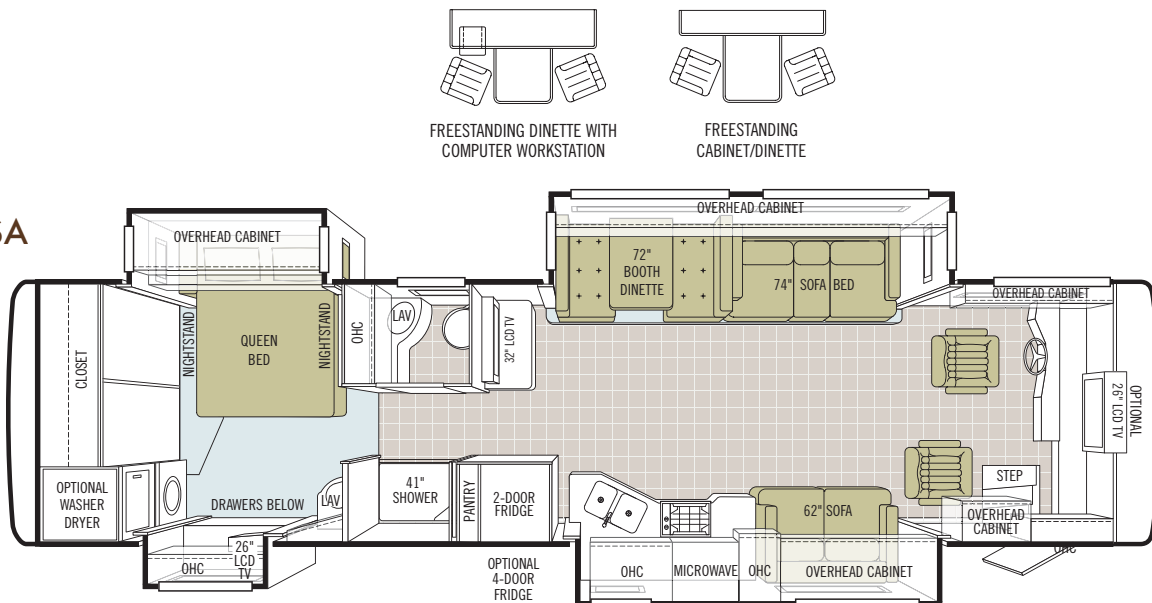


TIFFIN MOTORHOMES

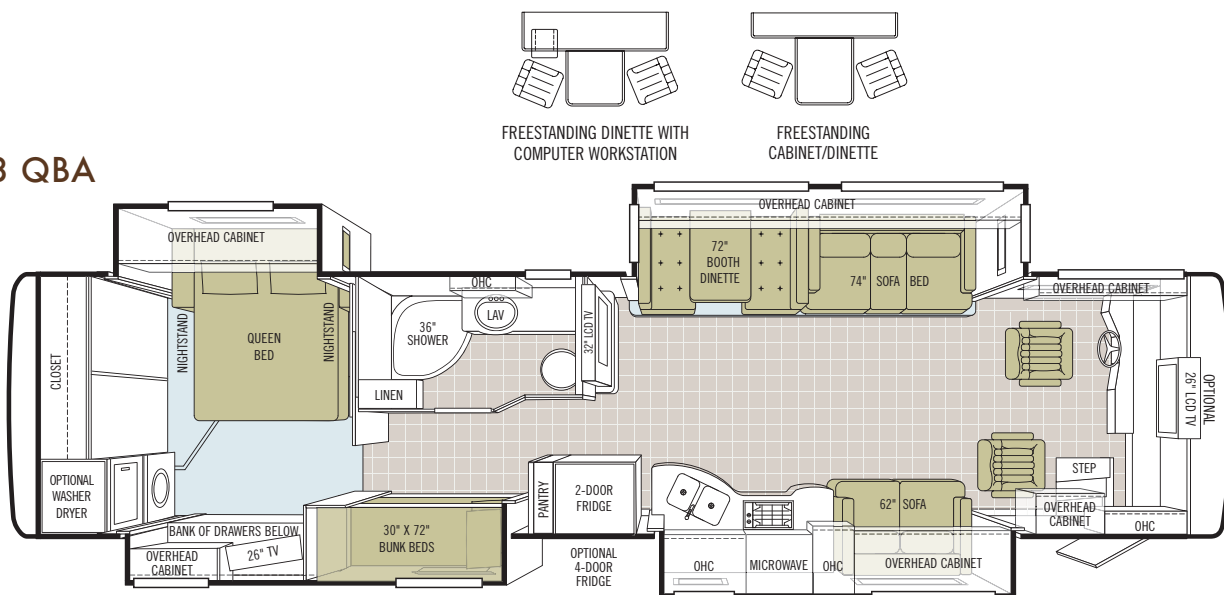
THE 2009 *Allegro* **RED**

SPECIFICATIONS

36 QSA



38 QBA



TIFFIN MOTORHOMES, INC. 105 2ND STREET NW RED BAY, AL 35582
 CALL 256.356.8661 FAX 256.356.8219
 FOR PARTS AND SERVICE CALL 256.356.0261

For more specifics on what makes a Tiffin Motorhome, go to tiffinmotorhomes.com

TECHNICAL SPECIFICATIONS

AUTOMOTIVE

STANDARD EQUIPMENT FOR ALLEGRO RED 36 QSA AND 38 QBA:			
• Raised Rail Chassis	• Air Suspension	• Full Air Brakes	• Exhaust Brake
FREIGHTLINER REAR ENGINE DIESEL CHASSIS			
Engine	CUMMINS ISB 6.7L ELECTRONIC DIESEL, TURBOCHARGED, AFTERCOOLED		
Peak HP	340 HP @ 2,600 rpm		
Peak Torque	660 @1,600 rpm		
TRANSMISSION		ALLISON 2500 MH SIX-SPEED AUTOMATIC WITH LOCK UP	
VEHICLE WEIGHT RATINGS			
Front GAWR	10,500 lb.		
Rear GAWR	17,500 lb.		
GVWR	28,000 lb.		
GCWR	33,000 lb.		
WHEEL BASE		228	
TIRE SIZE		275 / 80R 22.5	
FUEL TANK		100 GALLON DUAL FUEL FILL	
ALTERNATOR AMPS		160	

OVERALL

STANDARD EQUIPMENT FOR ALLEGRO RED 36 QSA AND 38 QBA:				
Overall Length (Approximate)	36' 9"	38' 9"	Fresh Water (Gallons)	90
Overall Height with Roof Air (Maximum)	12' 7"		Black Water (Gallons)	45
Interior Height	84"		Grey Water (Gallons)	70
Overall Width	101"		LPG Tank (Gallons; can only be filled to 80% capacity)	24
Interior Width	96"		Minimum Garage Height	13'

STRUCTURAL

STANDARD EQUIPMENT FOR ALLEGRO RED 36 QSA AND 38 QBA:			
• Laminated Floor, Sidewall & Roof	• Steel/Aluminum Reinforced Structure	• One-piece Moisture Resistant Molded Fiberglass Roof Cap	

EXTERIOR

STANDARD EQUIPMENT FOR ALLEGRO RED 36 QSA AND 38 QBA:			
• Fiberglass Front & Rear End Caps	• Tinted One-piece Windshield	• 6.0 kw Onan® Diesel Generator	• Horizontal Mounted Wipers
• Heated Power Mirrors	• Gel-coat Fiberglass Walls	• Exterior Patio Light	• Power Patio Awning
• Slideout Awning(s)	• Chrome Wheel Liners	• Two 13,500 BTU High Profile Roof Air Conditioners	• Quiet A/C Roof-ducted System
• Electric Step	• 1/4" Thick Single Pane Windows	• Convenient Access Doors with Gas Shocks	• Ridged Long-life Storage Boxes
• Single Handle Lockable Storage Door Latches	• Heated Water & Holding Tank Compartments	• Four 6 V Auxiliary Batteries	• Park Telephone Ready
		• Digital TV Antenna	• Cable Ready TV
		• 50 Amp Service	• Black Holding Tank Flush System
		• Exterior Rinse Hose / Shower	• Back-up Monitor
		• 110 V Exterior Receptacle	• 110 V / 12 V Converter
		• Undercoating	• Roof Ladder
		• External Tripod Satellite Hook-up	• Exterior Storage Compartment Lights
		• Paint Protective Film	• Side-view Cameras Activated by Turn Signals
		• Full Body Paint	• Leveling Jacks
AVAILABLE OPTIONS:			
• 8.0 kw Onan® Generator	• Automatic Entry Door Window	• Two 15,000 BTU High Profile Roof Air Conditioners with Heat Pump (8.0 Generator Only)	• Automatic Satellite
			• Hadley Air Horns
			• CB Antenna

All options may not be available in every model. Specifications and standard or optional equipment are subject to change without notice or obligation.

DRIVER'S COMPARTMENT

STANDARD EQUIPMENT FOR ALLEGRO RED 36 QSA AND 38 QBA:

- Entry Floor Light
- Step Switch & 12 V Disconnect Switch
- Non-powered Cloth Passenger & Driver Seats (Flexsteel®)
- Lighted Instrument Panel
- Single CD Player & AM/FM Stereo
- ICC Courtesy Lights
- 12 V Dash Receptacle
- Tilt Steering Wheel
- Dual Dash Fans
- Power MCD Solar / Privacy Windshield Shade
- Manual MCD Solar / Privacy Driver & Passenger Shade
- Fire Extinguisher
- Snack / Beverage Tray

AVAILABLE OPTIONS:

- Powered Cloth Driver Seat (Flexsteel®)
- 26" LCD TV (Front Overhead)

LIVING AREA / DINETTE

STANDARD EQUIPMENT FOR ALLEGRO RED 36 QSA AND 38 QBA:

- Booth Dinette with Large Pull-out Storage Drawers
- 32" LCD TV in Mid Section
- Cloth DE Sofa Bed on Driver's Side

AVAILABLE OPTIONS:

- Freestanding Dinette with Cabinets
- Ultra Leather DE Sofa Bed on Passenger Side
- DVD Player
- Dinette with Computer Workstation
- Cloth Air Coil® Hide-a-bed on Driver Side
- Home Theater Surround Sound System (Includes DVD Player)

KITCHEN

STANDARD EQUIPMENT FOR ALLEGRO RED 36 QSA AND 38 QBA:

- Double Bowl Kitchen Sink with Single Lever Satin Nickel Pullout Faucet
- Solid Surface Countertop
- Solid Surface Backsplashes
- 3-burner Cooktop with Oven
- Microwave
- 10 Cubic Foot Refrigerator

AVAILABLE OPTIONS:

- Convection Microwave
- Four Door Refrigerator with Ice Maker
- Ice Maker in Refrigerator
- Solid Wood Refrigerator Panels

BATH

STANDARD EQUIPMENT FOR ALLEGRO RED 36 QSA AND 38 QBA:

- Medicine Cabinet
- Skylight in Shower
- Satin Nickel Vanity Faucet
- Fiberglass Molded Shower
- Solid Surface Vanity Top

AVAILABLE OPTIONS:

- Fantastic® Fan
- Tub in Place of Shower (38 QBA Only)

BEDROOM

STANDARD EQUIPMENT FOR ALLEGRO RED 36 QSA AND 38 QBA:

- Wardrobe with Automatic Light
- Bed Comforter
- Carbon Monoxide Detector
- Innerspring Mattress
- LPG Leak Detector
- Bed Pillows
- Wall-to-wall Carpeting
- 26" LCD TV
- Solar / Privacy Shades
- Optional DVD Monitors in Bunk Beds (38 QBA Only)

GENERAL INTERIOR

STANDARD EQUIPMENT FOR ALLEGRO RED 36 QSA AND 38 QBA:

- Raised Panel Cabinet Doors
- Vinyl Headliner
- Medium Alderwood Solid Cabinet Doors & Drawer Fronts
- Wall-to-wall Vinyl Tile Flooring in Living Room, Kitchen & Bath
- Ball Bearing Drawer Slides
- Scotchgard® Treated Carpet & Fabrics
- Solar / Privacy Shades in Living Room
- Power Roof Vents
- Tank Level Monitor System
- Smoke Detector
- 10-gallon DSI Gas / Electric Water Heater
- Folding Step Well Cover
- Fluorescent Ceiling Lights

AVAILABLE OPTIONS:

- 2000 Watt Inverter
- Combo Washer / Dryer
- Stacked Washer / Dryer
- Vacuum Cleaner System
- Natural Maple Solid Cabinet Door & Drawer Front
- Cherry Bark Solid Cabinet Door & Drawer Front