

Flagstaff

SUPER LITES, V-LITES & CLASSIC SUPER LITES



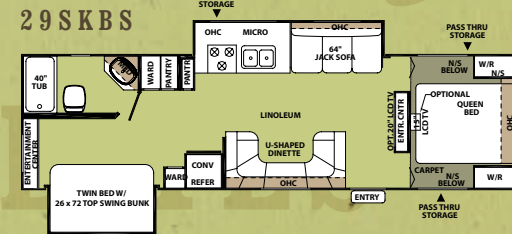
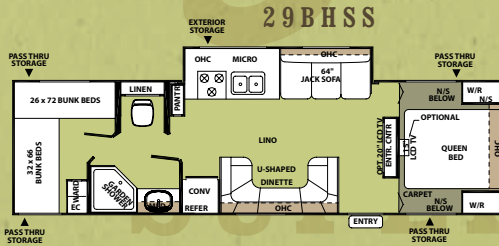
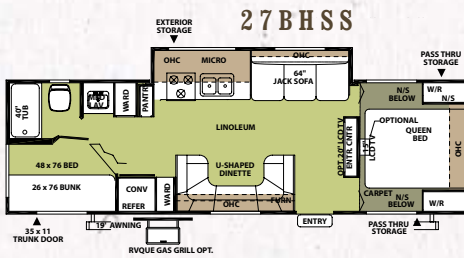
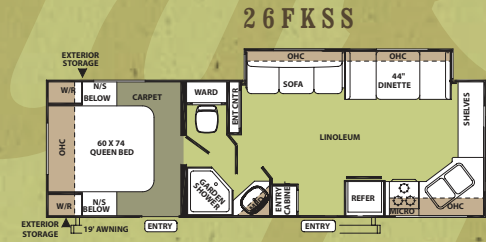
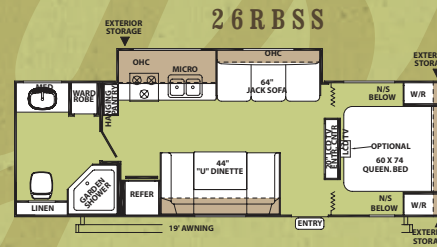
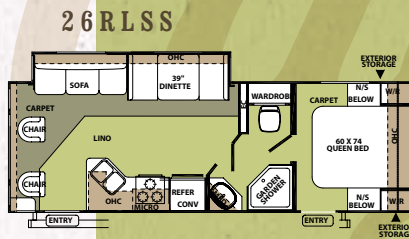
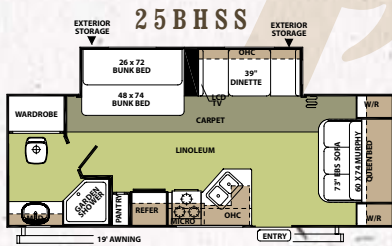
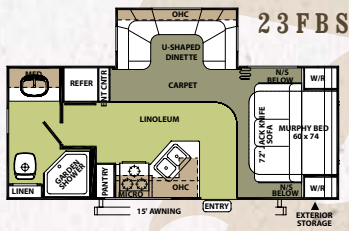
FOREST RIVER PRESENTS

Flagstaff

SUPER LITES, V-LITES & CLASSIC SUPER LITES

SUPER LITE SERIES

Our trailers are packed full of quality features in order to bring to you one of the best values in the light weight market. When you explore our floorplans, you will notice many flush-floor slides, solid wood doors and drawers fronts and an optional airbed sofa that opens up to a full 5" thick queen mattress. We use only the best inside our "Super Lite Series."



FOREST RIVER PRESENTS

SUPER LITE SERIES SPECIFICATIONS

MODEL	23FBS	25BHSS	26RLS	26RBSS	26FKSS	27BHSS	29BHSS	29SKBS
GVWR (Gross Vehicle Weight Rating)	6639	6505	6629	6639	6712	6666	7372	7598
BASE/DRY UNIT WEIGHT	4467	4732	5228	4822	5379	5120	5189	5432
BASE DRY HITCH WEIGHT	703	505	629	639	712	666	593	614
BASE DRY AXLE WEIGHT	3764	4227	4599	4183	4667	4454	4596	4818
CARGO CAPACITY	1833	1735	1363	1779	1295	1508	1833	1833
LENGTH	23' 7"	27'	29' 1"	29' 5"	29' 3"	31' 9"	33' 4"	33' 4"
WIDTH	96"	96"	96"	96"	96"	96"	96"	96"
HEIGHT W/O A/C	112"	112"	112"	112"	112"	112"	112"	112"
INTERIOR HEIGHT	78"	78"	78"	78"	78"	78"	78"	78"
FRESH WATER CAPACITY	37 gal	37 gal	37 gal	37 gal	37 gal	37 gal	37 gal	37 gal
GRAY WATER CAPACITY	38 gal	38 gal	38 gal	38 gal	38 gal	76 gal	38 gal	38 gal
BLACK WATER CAPACITY	38 gal	38 gal	38 gal	38 gal	38 gal	38 gal	38 gal	38 gal



SUPER LITES

Model number of any particular unit does not necessarily reflect the overall length of the unit itself. Dry weight are estimates.

CINNAMON DECOR WITH OAK



BATHROOM



GREEN DECOR WITH TUSCAN CREAM

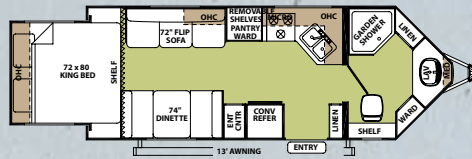


BEDROOM

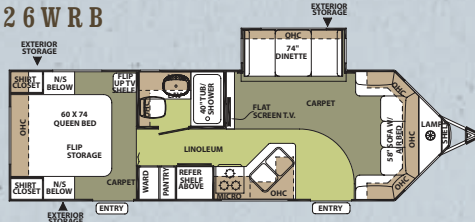
V-LITE SERIES

The Flagstaff V-Lite uses every possible space for interior room and storage, thanks to its "V" nose design. While the aerodynamic, fully vacuum-bonded exteriors can accommodate most trucks on the market, the available standards and options provide extensive customization for each individual consumer.

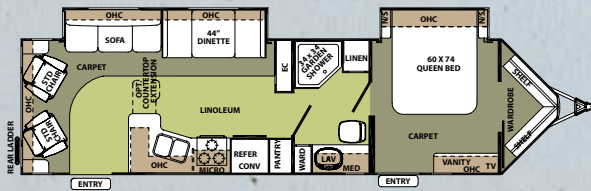
21WRS



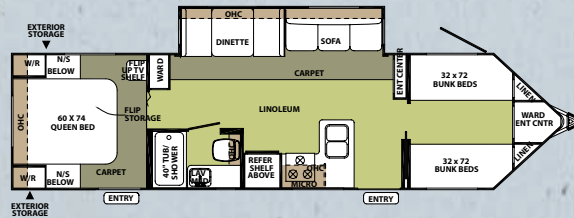
26WRB



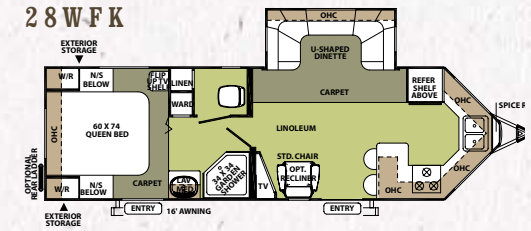
30WRLS



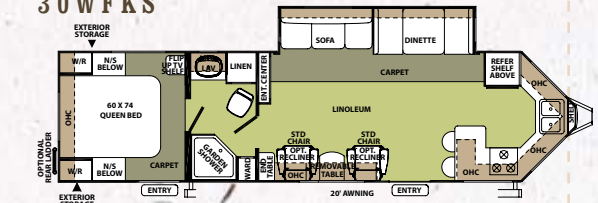
30WTBS



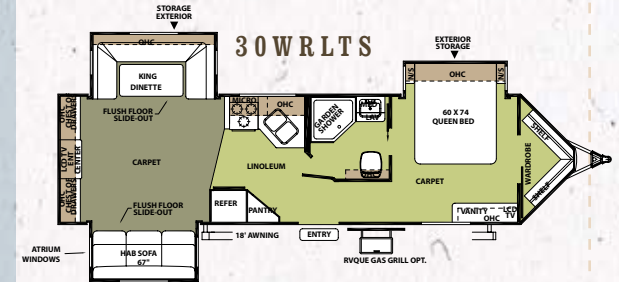
28WFK



30WFKS



30WRLTS

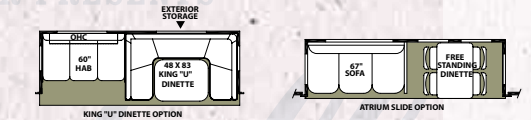


V-LITE SERIES SPECIFICATIONS

MODEL	21WRS	26WRB	28WFK	30WRLS	30WTB	30WRLTS	30WFKS
GVWR (Gross Vehicle Weight Rating)	6996	8035	7992	8812	8415	8564	8579
BASE/DRY UNIT WEIGHT	4786	5774	5758	6479	6200	6642	6240
BASE DRY HITCH WEIGHT	585	710	967	812	946	564	965
BASE DRY AXLE WEIGHT	4201	5064	4791	5667	5254	6078	5275
CARGO CAPACITY	1900	1900	1900	1888	1900	1440	1900
LENGTH	24' 8"	29' 5"	29' 10"	34' 3"	34' 3"	34' 3"	34' 3"
WIDTH	96"	96"	96"	96"	96"	96"	96"
HEIGHT W/O A/C	117"	117"	117"	117"	117"	117"	117"
INTERIOR HEIGHT	78"	78"	78"	78"	78"	78"	78"
FRESH WATER CAPACITY	43 gal	43 gal	43 gal	43 gal	43 gal	43 gal	43 gal
GRAY WATER CAPACITY	38 gal	32 gal	70 gal	38 gal	38 gal	38 gal	70 gal
BLACK WATER CAPACITY	38 gal	38 gal	38 gal	38 gal	38 gal	38 gal	38 gal



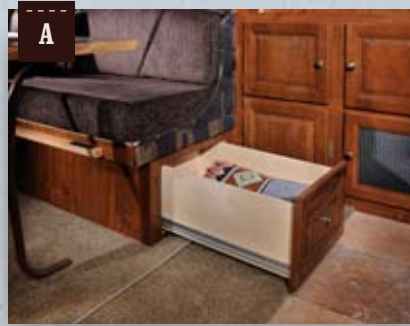
SLIDE-OUT OPTIONS



SLIDE-OUT OPTION AVAILABLE ON CLASSIC / V-LITES ONLY

FLAGSTAFF POPULAR STANDARD AND OPTIONAL FEATURES

A. Extra Large large dinette storage drawers w/ full extension drawer guides



B. Full extension metal drawer guides in the kitchen



C. Day night shades (Opt. but Std. on 26RLSS & 26FKSS)



D1. Air Bed Sofa (Opt. Std. on 26RLSS, 26FKSS, and V-Lites)



D2. Full 60X80 Queen air mattress on Sofa



D3. Additional storage under sofa



E. Forest River Switch Center (N/A Super Lite)



F. Gaming Plate (Std on most models)



G. Serta Residential grade mattress (N/A Super Lite)



FOREST RIVER PRESENTS



A



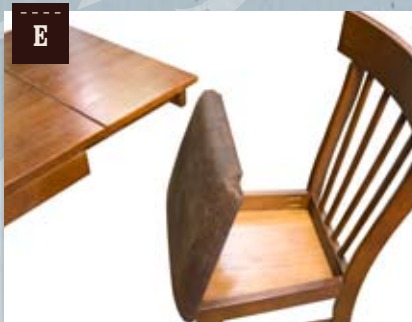
B



C



D



E

A. Door side cable hook up (N/A Super Lite)

B. Heated pass through storage.
(Std on all 5th Wheels)

C. Large LCD TV and entertainment center
(Std on most models)

D. Heated holding tanks with 12 Volt heat pads.
(Std on Classic Super Lite, V-Lite and Opt. on Super Lite)

E. Free-standing chair with seat storage & table extension (Opt.)

GREEN



BLUE



CINNAMON



TUSCAN CREAM
DÉCOR OPTION



WOOD-LOOK LINOLEUM
(ONLY AVAILABLE WITH TUSCAN CREAM & COMBO DÉCOR)

CHERRY DÉCOR OPTION



STANDARD LINOLEUM

OAK DÉCOR OPTION

HIGH QUALITY CONSTRUCTION

A. Aluminum bed frames with gas strut storage at the foot of the beds. (Drawer storage most models)



B. Aluminum dinette frames for added strength and weight savings



C. Front window with rock guard for additional daylight (Most models)



D. All Steel "I" beam frame construction



E. TPO front cap adds strength and durability. (Std. Classic TT and FW)



F. Enclosed underbelly



FOREST RIVER PRESENTS

Flagstaff

CONSTRUCTION



A



B

A. Flagstaff is one of the strongest light weight trailers on the market because the trailers are vacuum bonded on all six sides. The walls, floors, roof and fronts and backs have been vacuum bonded to make sure your trailer is light weight and built to last.

B. Structurally engineered materials makes our vacuum-bonded walls some of the strongest in the industry.



C

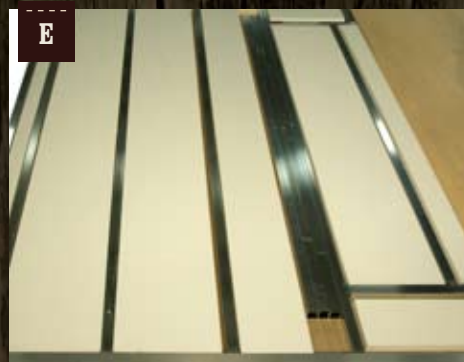
C. ALKO® AXLES AND EASY LUBE HUBS

- Fully independent wheel suspension.
- Lower trailer center of gravity for improved stability.
- No metal to metal contact and no springs, shackles, hangers, or U-bolts to break or wear out.



D

D. Glued and screwed hardwood cabinetry



E

E. Vacuum bonded floor with 16" on center floor joists



F

F. Vacuum bonded roof with 2" radius



G

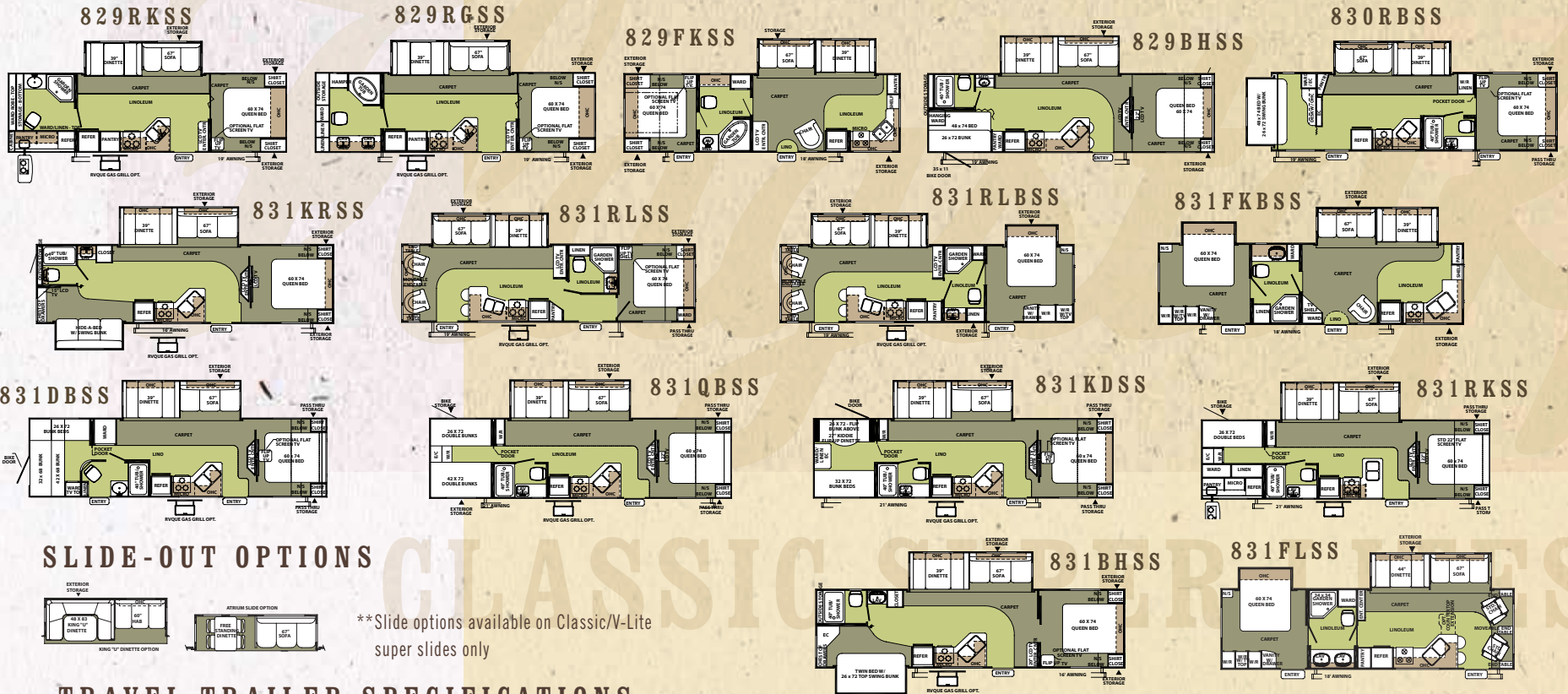
G. Radius roof foam with built in A/C ducts



H

H. 4.5" thick roof foam

CLASSIC SUPER LITE TRAVEL TRAILER SERIES



TRAVEL TRAILER SPECIFICATIONS

MODEL	829RGSS	829RKSS	829FKSS	829BHSS	830RBSS	831KRSS	831RLSS	831RLBSS	831FKBSS	831DBSS	831QBSS	831KDBSS	831RKSS	831BHSS	831FLSS
GVWR (Gross Vehicle Weight Rating)	7951	8381	8234	8475	8761	8848	8531	8597	8633	8477	8273	8400	8587	8714	8655
BASE/DRY UNIT WEIGHT	5545	6086	5887	6085	6360	6498	6153	6389	6273	6142	5872	6055	6270	6373	6310
BASE DRY HITCH WEIGHT	626	602	950	822	787	848	655	851	880	793	948	973	912	894	915
BASE DRY AXLE WEIGHT	4919	5484	4937	5263	5573	5650	5498	5538	5393	5349	4924	5082	5358	5479	5395
CARGO CAPACITY	1900	1900	1900	1900	1900	1900	1900	1900	1900	1900	1900	1900	1900	1900	1900
LENGTH	32' 2"	32' 2"	32' 2"	31' 6"	33' 3"	34' 1"	34' 1"	34' 8"	34' 1"	34' 1"	33'	34' 1"	33"	34' 1"	32' 2"
WIDTH	96"	96"	96"	96"	96"	96"	96"	96"	96"	96"	96"	96"	96"	96"	96"
HEIGHT W/O A/C	117"	117"	117"	117"	117"	117"	117"	117"	117"	117"	117"	117"	117"	117"	117"
INTERIOR HEIGHT	78"	78"	78"	78"	78"	78"	78"	78"	78"	78"	78"	78"	78"	78"	78"
FRESH WATER CAPACITY	43 gal	43 gal	43 gal	43 gal	43 gal	43 gal	43 gal	43 gal	43 gal	43 gal	43 gal	43 gal	43 gal	43 gal	43 gal
GRAY WATER CAPACITY	38 gal	38 gal	76 gal	76 gal	38 gal	70 gal	76 gal	38 gal	64 gal	38 gal	38 gal	38 gal	38 gal	76 gal	38 gal
BLACK WATER CAPACITY	38 gal	38 gal	38 gal	38 gal	38 gal	38 gal	38 gal	38 gal	38 gal	38 gal	38 gal	38 gal	38 gal	38 gal	38 gal

Model number of any particular unit does not necessarily reflect the overall length of the unit itself. Dry weight are estimates.

GREEN DECOR WITH COMBO WOOD



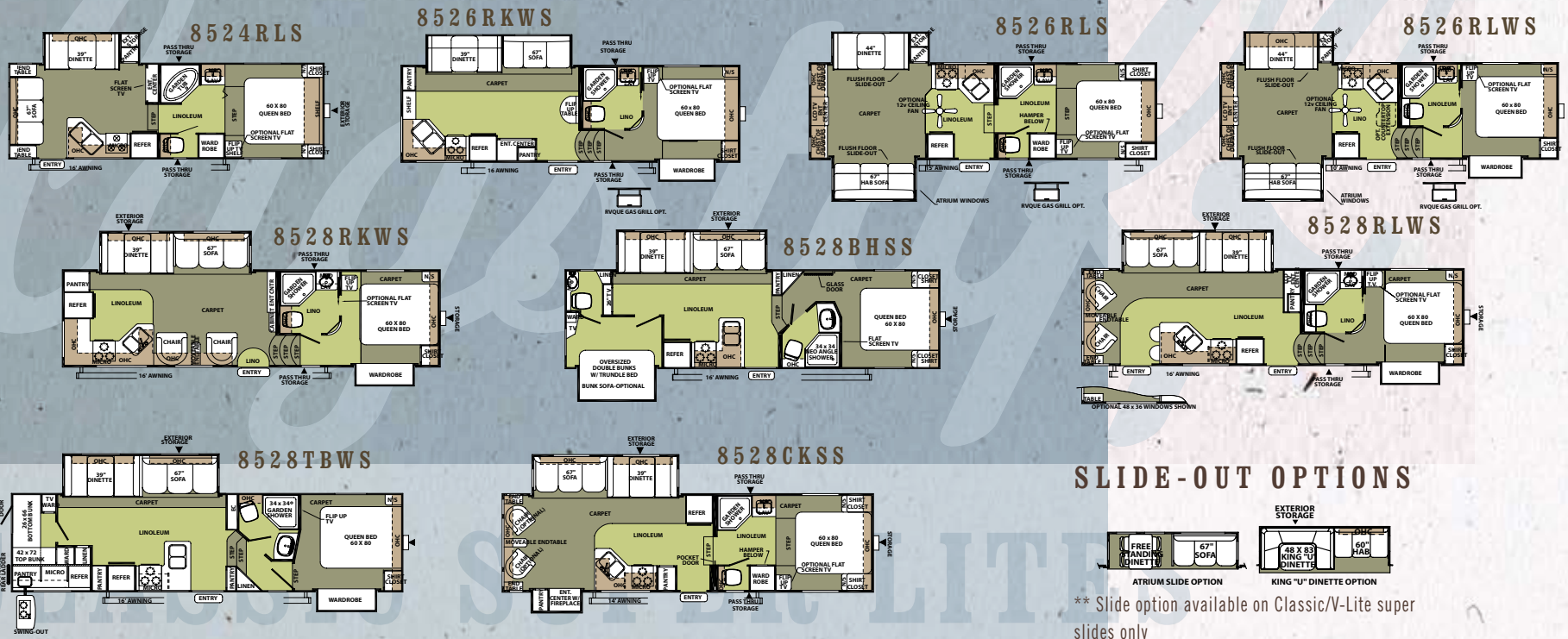
BEDROOM

CINNAMON DECOR WITH CHERRY

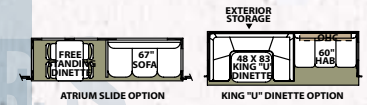


BEDROOM

CLASSIC SUPER LITE FIFTH WHEEL SERIES



SLIDE-OUT OPTIONS



** Slide option available on Classic/V-Lite super slides only

CLASSIC SUPER LITE FIFTH WHEEL SERIES SPECIFICATIONS

MODEL	8524RLS	8526RKWS	8526RLS	8526RLWS	8528BHSS	8528CKSS	8528RKWS	8528RLWS	8528TBWS
GVWR (Gross Vehicle Weight Rating)	8293	8873	8844	9015	9459	9403	9077	9187	9418
BASE/DRY UNIT WEIGHT	6010	6449	6517	6660	7413	7008	6810	6830	7352
BASE DRY HITCH WEIGHT	1028	1534	977	1121	1459	1443	1077	1187	1418
BASE DRY AXLE WEIGHT	4982	4915	5540	5539	5154	5565	5733	5643	5934
CARGO CAPACITY	1900	1900	1900	1900	1900	1900	1900	1900	1658
LENGTH	26' 7"	28' 10"	28' 4"	28' 10"	30' 4"	30' 6"	30' 4"	30' 4"	30' 6"
WIDTH	96"	96"	96"	96"	96"	96"	96"	96"	96"
HEIGHT W/O A/C	135"	135"	135"	135"	147"	147"	147"	147"	147"
FRESH WATER CAPACITY	43 gal	43 gal	43 gal	43 gal	43 gal	43 gal	43 gal	43 gal	43 gal
GRAY WATER CAPACITY	38 gal	76 gal	38 gal	38 gal	76 gal	76 gal	76 gal	76 gal	76 gal
BLACK WATER CAPACITY	38 gal	38 gal	38 gal	38 gal	38 gal	38 gal	38 gal	38 gal	38 gal

Model number of any particular unit does not necessarily reflect the overall length of the unit itself. Dry weight are estimates.



Standards and options are subject to change

FLAGSTAFF 2010 SUPER LITE, V-LITE & CLASSIC SUPER LITE STANDARDS & OPTIONS

MODELS	SL	V	CSL
· Fully Laminated Aluminum Frame (Floor, Sidewall, & Roof)	S	S	S
· Insulation Factors R-7 Side Wall, R-12 Floor and R-14 Roof	S	S	S
· Radius Roof	S	S	S
· Easy Lube Axles	S	S	S
· Foot Flush Toilets	S	S	S
· Enclosed Tanks	S	S	S
· Aluminum Bed and Dinette Frames	S	S	S
· Laminated Fiberglass Sidewalls:			
· Lamilux 1500	S	--	--
· Lamilux 4000	--	CP	CP
· Screwed and Glued Cabinetry	S	S	S
· Solid Wood Doors and Drawers	S	S	S
· Vinyl Roof	S	S	S
· Large Grab Handles	CP	S	S
· Torsion Axle, Rubber-Ryde Suspension	S	S	S
· Electric Slide-Out	S	S	S
· Floor Ducted Furnace	S	S	S
· Raised Panel Doors and Drawers	S	S	S
· Digital AM/FM/CD/DVD w/ Remote	S	S	S
· Residential One-Piece Sink Cover/ Cutting Board	S	S	S
· Monitor Panel	S	S	S

MODELS	SL	V	CSL
· Designer Valances w/ Lambrequin Arms	S	S	S
· Mini Blinds	S	--	--
· Day/Night Shades	0	S	S
· Tub Surround	S	S	S
· Three Burner High Output Gas Range	S	S	S
· Six Gallon "Quick Recovery" Water Heater	S	S	S
· Water Heater By-Pass Kit	S	S	S
· Outside Shower	S	S	S
· Phone Jack	S	S	S
· Two 20 lb Gas Bottles	S	--	--
· Two 30 lb Gas Bottles	--	S	S
· Molded Bottle Cover	S	S	S
· Bathroom Skylight	S	S	S
· 55 Amp Converter With Charger	S	S	S
· Auto Gas/Electric Refrigerator	S	S	S
· Stabilizer Jacks	S	S	S
· Power Stabilizer Jacks (CP on 5th Wheels)	0	0	0
· Residential Metal Drawer Guides with Full Extension Drawer Guides in Kitchen	S	S	S
· Directional Reading Lights on Sofa Slides	S	S	S
· 14" Tires With Double Step	S	--	--
· 15" Tires With Triple Step	--	S	S
· TV Antenna w/ Cable & Satellite Hook-Up	S	S	S

MODELS	SL	V	CSL
· LCD TV and DVD With 5.1 Digital Dolby Surround Sound (N/A 2304S)	0	S	S
· Create-a-Breeze Three Speed Fantastic Vent	SO	SO	SO
· Extra Create-a-Breeze fan	0	0	0
· Heated Mattress	SO	--	--
· Water-Pur Filtration System	SO	SO	SO
· 13,500 BTU Ducted Roof Air	CP	CP	CP
· 15,000 BTU Ducted Roof Air	0	0	0
· Microwave	CP	CP	CP
· Gas Oven With Piezo Ignition	CP	S	S
· Power Awning w/ Adjustable Rain Dump	CP	CP	CP
· Outside Gas Grill and Worktable	CP	0	0
· 110 DSI Gas/Electric Water Heater	CP	S	S
· Raised Refrigerator Panels	0	0	0
· Tuscan Cream Raised Refer Fronts	0	0	0
· Electronically Controlled Heated Holding Tanks	0	S	S
· Spare Tire Carrier & Cover	CP	CP	CP
· Theater Surround Sound (n/a on 23FBS)	0	S	S
· Aluminum Wheels	0	CP	CP
· 1/2 Sliding Storage Tray (N/A 25BHSS)	0	--	--
· CSA	0	0	0
· Outside Speakers	CP	CP	CP

SL = SUPER LITE, V = V-LITE, CSL = CLASSIC SUPER LITE

S = STANDARD

0 = OPTIONAL

CP = CONVENIENCE PACKAGE

SO = STANDARD OPTION

-- NOT AVAILABLE

FOREST RIVER PRESENTS

Standards and options are subject to change

FLAGSTAFF 2010 SUPER LITE, V-LITE & CLASSIC SUPER LITE STANDARDS & OPTIONS

MODELS	SL	V	CSL
· Awning Slide Topper	0	0	0
· Rear Ladder	0	0	0
· Tinted Safety Glass	CP	CP	CP
· LCD Bedroom TV	--	0	0
· Chrome-Look Wheel Covers	0	--	--
· Power Front Jack (std on 5th wheels)	0	0	0
· Tire Pressure Monitoring System	0	0	0
· Carbon Monoxide Detector forced	SO	SO	SO
· Minimum Carpet available	0	0	0
· Storm Windows available	0	0	0
· Decorative Frame Skirting	S	S	S
· Air Hide-a-bed w/ Storage (N/A 28WFK)	--	0	0
· 22" LCD TV in Bedroom (Std. on all center entertainment models.)	--	0	0
· Tuscan Cream, Oak or Cherry Interior	0	0	0
· Stainless Steel Appliances With Oak, Tuscan Cream or Cherry Interior	0	0	0
· New Flush Mount Stone Cast Sinks	--	S	S
· Trash Can in Kitchen (Most Models)	--	S	S
· Interior Floor Light by Entrance Door	--	S	S
· MP3 Player Hook-Up	S	S	S
· Solid Wood Raised Panel Doors and Drawers	S	S	S
· Bathroom Skylight	S	S	S

MODELS	SL	V	CSL
· Black Water Flush	S	S	S
· Swivel Chair (Where Available)	S	S	S
· 30" Entrance Door (Most Models)	S	S	S
· Lighted Entry Step	--	S	S
· Free Standing Table and Chairs	0	0	0
· Ceiling Fans (Fifth Wheels)	--	--	0
· Atrium Slide Windows (. Super Slides)	--	0	0
· Counter Top Extension (N/A 829FKSS, 831FKSS AND 831FKBSS)	0	0	0
· Lazy Boy Leather Recliner Option: Available ILO All Units With Barrel Chairs (N/A 831FLSS)	--	--	0
· Residential Serta Mattress	--	CP	CP



SL = SUPER LITE, V = V-LITE, CSL = CLASSIC SUPER LITE

S = STANDARD

0 = OPTIONAL

CP = CONVENIENCE PACKAGE

SO = STANDARD OPTION

-- NOT AVAILABLE



PEACE OF MIND.

Forest River has yet another exclusive feature to offer: One year of free roadside assistance will be given to every 2010 Flagstaff customer. This is just one more way to say “Thank you” and to ensure an enjoyable traveling experience.



Forest River's Hallmark of Excellence PRE-DELIVERY INSPECTION FACILITIES

Brought online in 2005, Forest River is proud of its state-of-the-art test facility. This beautiful building blends many of the old tried and true methods of testing our diverse types of RVs with new innovative ways of solving quality issues. Being centrally located to most Forest River manufacturing facilities, this 20,000 square foot PDI (Pre-delivery Inspection) test building gives immediate daily feedback to individual managers. This assures the production facilities that nothing has slipped by the plant's quality assurance personnel and the units are “green” and ready to ship.

YOUR FLAGSTAFF DEALER

For details on Flagstaff's complete warranty program, see your Flagstaff dealer. When it comes to backing products with the same quality and commitment it has when it begins the manufacturing process, the only name you have to remember when you're looking for a recreational vehicle is Flagstaff. Flagstaff offers the following additional limited warranties to the original purchasers. Consult written warranty for details.

1. Twelve-year vinyl roof warranty,
2. Two-year fiberglass warranty,
3. Five-year axle warranty,
4. One-year bumper to bumper,
5. Available second-year warranty.

All specifications contained herein are based on the latest product information at time of printing. Forest River reserves the right to make changes in colors, materials, equipment and specifications at any time Without notice and assumes no responsibility for any errors in this brochure.



Forest River, Inc. 55470 C.R. 1 Elkhart, IN 46515 574.389.4600 www.forestriverinc.com
www.forestriveraccessories.com LITHO U.S.A FOR 0734