

Winnebago  
**OUTLOOK**<sup>®</sup>  
2010



## Winnebago OUTLOOK®

Whether you're heading to the lake for the weekend or traveling coast to coast, the 2010 Winnebago Outlook® is the coach for you. User-friendly floorplans full of SmartSpace™ design elements make the most of the available space. Adding the interior upgrade package, shown above, gives you accent rope lighting, a range backsplash, pleated day/night blinds, the Dream Dinette™ table that allows you to easily raise and lower the table top for a perfect fit, cab floor mats and a dash appliqué. Exterior full-body paint is also available. Life is good when you experience it with your new Outlook.

## Ready to Roll

With your Outlook you will always be ready to roll, whether it's just the two of you or the whole family. A spacious overhead bunk is standard and can be enhanced with an available 19" LCD TV and stereo system that includes a DVD player and video selection system that allows DVDs to be shown on the bedroom TV.

The RV Radio® includes a CD player, weather band and two remotes. Add the Sirius® Plug-N-Play satellite radio system and receive a six-month complimentary subscription. It includes an iPod interface connector that allows you to play and operate your iPod through the RV Radio, plus a second docking station so you can enjoy Sirius programming in your tow vehicle, too.

The full-featured galley includes a large two-door refrigerator/freezer, 3-burner range top with storage below, microwave oven and beautiful cabinetry that provides ample, accessible storage.



**GoWinnebago.com** Watch key feature videos, take interactive tours, see the latest promotional offers and a whole lot more at [GoWinnebago.com](http://GoWinnebago.com).



**BenchMark** The versatile BenchMark® full-comfort dinette features innerspring cushions, flip-up access to storage and an available Dream Dinette™ table that allows for simple, one-handed table height adjustments. It even converts into a bed. An integrated child safety seat tether provides a place for securing car seats.



**Drawers** Full-extension slides allow the spacious drawers to open wide for easy access.



## Comfort Sofa Sleeper

The sofa/sleeper you've always wanted is here. Never before has converting your sofa into a bed been so easy—or this comfortable. (NA 29B)



1. By day it's a plush sofa.



2. A hidden drawer stores bed linens.



3. At night, the sofa easily folds out into a bed.



4. The mattress quickly inflates and deflates using a built-in power source.

## Rest and Relax

A large bedroom slideout creates a spacious and comfortable room with a mirrored wardrobe and an available interior upgrade package that includes pleated day/night blinds for adjustable light and privacy levels.

Watch movies while relaxing in bed, thanks to the video selection system that allows the front DVD player to be viewed on the available 19" bedroom LCD TV. The TV can easily be removed and conveniently mounted on an exterior bracket when you want to watch TV outside under the awning.



## Travel in Style

Personalize your Outlook with standard graphics, deluxe graphics or full-body paint to reflect your unique style. The deluxe graphics packages and full-body paint come with fiberglass running boards and wheel flairs. Power door locks and a 5,000-lb hitch<sup>6</sup> come standard and stylized aluminum wheels, dual-glazed windows and an awning are all available.

Enhance driving luxury with available power mirrors with defrost, an available rearview monitor and rear air springs for an even smoother ride. Add a second deep-reserve Group 31 battery for extra dry camping capacity. The available Cummins Onan<sup>®</sup> MicroQuiet™ generator provides 110-volt power when you don't have a shoreline source available.

For more fun outdoors, add the available exterior entertainment center, which includes AM/FM stereo, CD player and a removable table.



**TRUELEVEL** The TrueLevel holding-tank monitoring system uses sonar technology to read liquid levels from outside the tank. There are no probes to corrode or clog, just accurate readings time after time.



**Leveling Jacks** Monitor the placement of the available automatic leveling jacks from the controls at the entrance door for quick and easy campground setup.



**Exterior TV** Move the bedroom TV to the exterior mount and enjoy your favorite shows in the great outdoors.

# Floorplans & Specifications

Dimensions shown are for sleeping space only and may vary due to styling differences. Dashed lines denote overhead storage areas. Floorplans and specifications are also available online at [GoWinnebago.com](http://GoWinnebago.com).

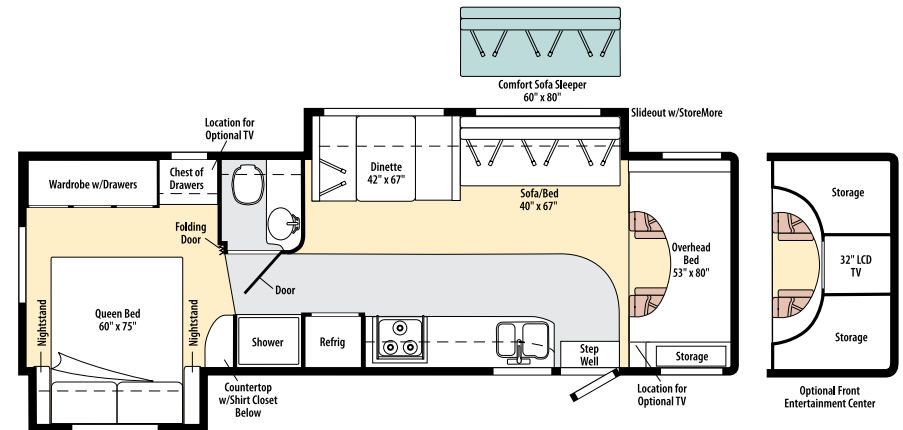
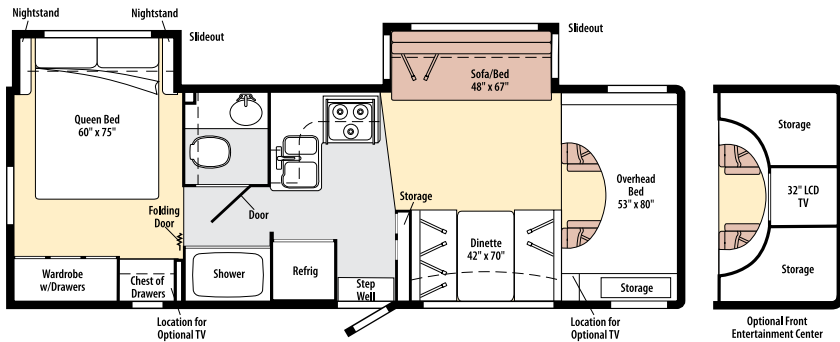


## 29B Weights & Measures

Length	29'9"
Exterior Height <sup>1</sup> w/AC	11'5"
Exterior Width <sup>2</sup>	8'5"
Exterior Storage <sup>3</sup> (cu. ft.)	59.6
Awning Length	18'
Interior Height	6'8"
Interior Width	8'
Freshwater Capacity w/Heater <sup>4</sup> (gal.)	42
Holding Tank Capacity - Black/Gray <sup>4</sup> (gal.)	30/39
LP Capacity <sup>5</sup> (gal.)	18
Fuel Capacity (gal.)	55
GCWR <sup>6</sup> (lbs.)	20,000
GVWR (lbs.)	14,500
GAWR - Front (lbs.)	5,000
GAWR - Rear (lbs.)	9,500
Wheelbase	190"

## 31C Weights & Measures

Length	31'2"
Exterior Height <sup>1</sup> w/AC	11'5"
Exterior Width <sup>2</sup>	8'5"
Exterior Storage <sup>3</sup> (cu. ft.)	33.9
Awning Length	15'
Interior Height	6'8"
Interior Width	8'
Freshwater Capacity w/Heater <sup>4</sup> (gal.)	43
Holding Tank Capacity - Black/Gray <sup>4</sup> (gal.)	35/33
LP Capacity <sup>5</sup> (gal.)	18
Fuel Capacity (gal.)	55
GCWR <sup>6</sup> (lbs.)	20,000
GVWR (lbs.)	14,500
GAWR - Front (lbs.)	5,000
GAWR - Rear (lbs.)	9,500
Wheelbase	220"



## Ford® E450 Chassis

305-hp 6.8L SEFI V10 engine

TorqShift™ 5-speed automatic transmission w/overdrive

4-wheel ABS

115-amp. alternator

Trailer Hitch®: 5,000-lb. drawbar/350-lb. maximum vertical tongue weight and wiring w/7-pin connector

Stainless steel wheel liners

### Optional Equipment

- Hydraulic automatic leveling jacks
- Auxiliary rear air springs
- Stylized aluminum wheels

## Cab Conveniences

RV Radio®: AM/FM stereo, CD player, weather band, iPod/MP3 input, steering wheel and handheld remotes

Cab seats: fabric, armrest, lumbar support and multi-adjustable slide/recline

Power steering w/tilt and cruise control

Cab divider curtain

Power door locks

Power windows

Sunvisors

Chassis/house battery radio power switch

12-volt DC powerpoint

Exterior adjustable mirrors

### Optional Equipment

- Plug-N-Play Sirius® Satellite Radio: two docking ports, receiver, 6-month complimentary subscription and iPod interface connector
- Electric exterior mirrors w/defrost and remote
- Rearview LCD monitor system w/one-way audio
- Sliding pleated blinds for windshield and cab door windows

## Interior

Ladder to access bunk

Satellite system ready

Roof vent(s) (lounge and bedroom)

Powered roof vent (bath)

Monitor panel

Key-activated slideroom master lock switch

Mini blinds (galley)

Pleated shades (lounge, dinette and bedroom)

Tinted windows

### Optional Equipment

- Powered ventilator fan (lounge area)
- Tinted dual-glazed, thermo-insulated windows
- Interior Upgrade Package: accent rope lighting, dash appliqué, wood veneer raised-panel refrigerator door insert, Dream Dinette™ table, cab floor mats, decorative picture, sink covers, range cover, throw pillows, day/night pleated blinds, range backsplash, single-control lavatory faucet
- Entertainment Center (front overhead): accent rope lighting, 32" LCD HD TV, home theater sound system w/AM/FM receiver, DVD player, amplifier, speaker system (5), subwoofer and video selection system
- 19" LCD TV, DC, stereo system w/AM/FM, CD/DVD player, alarm clock, video selection system, 2 cube speakers and subwoofer
- RV satellite dish w/elevation sensing unit
- Vinyl floorcovering throughout (carpet in slideout rooms and cab)
- Vinyl front to bedroom (carpet in slideout rooms, cab and bedroom)

## Galley

Microwave oven w/range fan

3-burner range top w/storage below

Norcold® double-door refrigerator/freezer

Flip-up countertop extension (NA 31C)

Laminate countertop

### Optional Equipment

- Water filtration system for cold water
- Microwave/convection oven w/range fan

## Bath

Shower w/wall surround

Flexible showerhead

Skylight

Retractable shower screen

### Optional Equipment

- Textured glass sliding shower doors
- Textured glass hinged shower door

## Bedroom

Serta® queen mattress, bedspread and pillows w/shams

### Optional Equipment

- 19" LCD TV (movable)

## Exterior

Front mud guards

Rear mud flaps

Porch light

Entrance screen door

Fixed-mount ladder

Running boards

KeyOne™ system

Pull-out entrance door step

Premium high-gloss fiberglass

### Optional Equipment

- Exterior Entertainment Center: AM/FM stereo, CD, remote, recessed speakers (2), TV jack, DC receptacle, AC duplex receptacle, radio antenna, removable TV table, lockable compartment
- Vinyl patio awning (NA w/full-body paint)
- Acrylic patio awning w/metal wrap (requires full-body paint)
- Electric entrance door step

## Heating & Cooling System

Roof-mounted 14,800 BTU air conditioner

30,000 BTU furnace

### Optional Equipment

- A/C heat pump

## Electrical System

Auxiliary start circuit

Group 31 deep-cycle coach battery

Battery disconnect system (coach)

Automatic dual battery charge control

25' 30-amp. power cord

45-amp. converter/charger

### Optional Equipment

- 1 additional Group 31 deep-cycle coach battery
- 4,000-watt Cummins Onan® MicroQuiet™ generator
- 300-watt inverter (requires front overhead entertainment center)

## Plumbing System

City water hook-up

On-demand water pump

Drainage valves

10' sewer hose

LP Tank

TrueLevel™ holding-tank monitoring system

6-gallon water heater

Water System Winterization Package: water heater bypass valve and siphon tube

### Optional Equipment

- Heated drainage system w/lights, heat pad and pipe wraps
- Exterior wash station
- 6-gallon water heater w/motoraid, energy management system and auto heater

## Safety

Seat belts

Driver and passenger air bags

Fire extinguisher

Child seat tether anchor

LP, smoke and carbon monoxide detectors

Ground fault interrupter

High-mount brake lamp

## Warranty<sup>7</sup>

12-month/15,000-mile basic warranty<sup>8</sup>

36-month/36,000-mile limited warranty on structure<sup>8</sup>

10-year limited parts and labor warranty on roof skin<sup>8</sup>

- Optional
- NA Not Available

- <sup>1</sup> The height of each model is measured to the top of the tallest standard feature and is based on the curb weight of a typically equipped unit. The actual height of your vehicle may vary by several inches depending on chassis or equipment variations. Please contact your dealer for further information.
- <sup>2</sup> Outlook floorplans feature a wide-body design – over 96". In making your purchase decision, you should be aware that some states restrict access on some or all state roads to 96" in body width. Before making your purchase decision, you should confirm the road usage laws in the states of interest to you.
- <sup>3</sup> The load capacity of your motor home is designated by weight, not by volume, so you cannot necessarily use all available space when loading your motor home.
- <sup>4</sup> Capacities are based on measurements prior to tank installation. Slight capacity variations can result due to installation applications.
- <sup>5</sup> Capacities shown are tank manufacturer's listed water capacity (W.C.) Actual filled LP capacity is 80% of listing due to overfilling prevention device on tank.
- <sup>6</sup> Actual towing capacity is dependent upon your particular loading and towing circumstances, which includes the GVWR, CAWR and GCWR as well as adequate trailer brakes. Please refer to the Operator's Manual of your vehicle for further towing information.
- <sup>7</sup> See separate chassis warranty.
- <sup>8</sup> See your dealer for complete warranty information.

Not all items available in combination. See dealer for details.

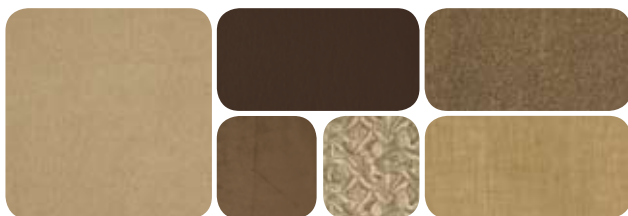
Winnebago Industries® continuing program of product improvement makes specifications, equipment, model availability, and prices subject to change without notice. Comparisons to other motor homes are based on the most recent information available at printing.

# Interior Décor

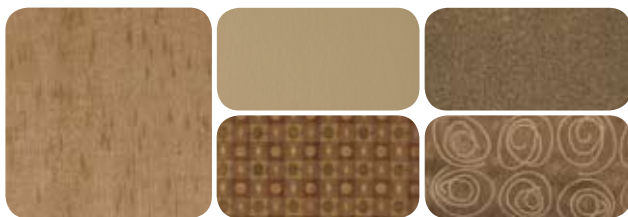
Choose from three fabric collections and three cabinet woods, all with hidden hinges.



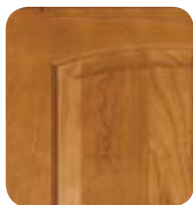
Aspen Leaf with available Bark UltraLeather™



Sesame Seed with available Truffle UltraLeather



Stargazer with available Timber UltraLeather



Honey Cherry



Belmont Maple



Coffee-Glazed  
Sierra Maple



# Exteriors

## The Legacy Rolls On

For more than fifty years, Winnebago Industries® has been creating the RVs and motor homes that have enabled people to live their dreams, see the country, visit friends and enjoy more time together as a family. The Outlook® continues the Winnebago legacy of combining innovations, features and quality in a coach you'll be proud to call home.



**Black/Red Candy Metallic**  
STANDARD GRAPHICS



**Light Gold/Moss Green Metallic**  
STANDARD GRAPHICS



**Iron Gray Metallic**  
DELUXE GRAPHICS



**Light Bronze Metallic**  
DELUXE GRAPHICS



**Stone Fence**  
FULL-BODY PAINT



**Blue Moon**  
FULL-BODY PAINT



**Crimson**  
FULL-BODY PAINT



**Black Forest**  
FULL-BODY PAINT



THE MOST RECOGNIZED  
NAME IN MOTOR HOMES™



# Built by Winnebago Industries. Built to last.

Winnebago motor homes are built by Winnebago Industries, the company that defined motor homes. The company that built its reputation on quality construction. The company that transformed the motor home concept into a way of life.

**SUPER STRUCTURE** Today, Winnebago Industries brings that reputation for quality and more than fifty years of RV innovation to the design and construction of every motor home. It's all a part of SuperStructure®, our exclusive system of proprietary structural components that instills in each motor home improved strength and durability.

**Solid Foundation** Steel and aluminum truss work provides a solid, flat foundation for the floor and sidewalls. Our engineers enhance the handling and stability by taking special care to properly distribute the weight of all components.



**Interlocking Joints** The floor, sidewalls and roof are all integrally connected using interlocking joints. This ensures the Outlook body is a cohesive unit with maximum strength and durability.

**Attention to Detail** Whether it's sending every Outlook through a high-pressure water tunnel to check for leaks or labeling individual wires and barcoding parts to save time and frustration during service, Winnebago Industries considers every detail to ensure your Winnebago motor home provides you with years of pleasure.

**Strong as Steel** Key appliances and cabinetry are secured to a metal substructure for added stability and safety.

**E-Coating** Winnebago Industries employs an automotive-style dip tank process to apply an advanced electro-deposition coating on critical steel components for corrosion protection.

**Thermo-Panel® Sidewalls** Invented by Winnebago Industries, Thermo-Panel construction combines a fiberglass panel, high-density block-foam insulation and aluminum support structures to create some of the most long-lasting, lightweight sidewalls in the industry.



Winnebago 1-year-old fiberglass roof



Competitor's 1-year-old rubber roof

**Fiberglass Roof** The Outlook features a crowned, one-piece fiberglass roof, backed with a 10-year limited parts-and-labor roof skin warranty. Fiberglass offers superior strength, attractiveness and durability over the rubber roofs found on many competitive models which can chalk, streak and degrade over time. Fiberglass also provides increased puncture and tear resistance.



**GoWinnebago.com** Visit us on the web for more info on all of our motor homes, the latest product updates and a host of web-exclusive content.



**Take a Tour** We're proud of our process, state-of-the-art facilities and the people who make Winnebago Industries number one. We invite you to visit our complex in Forest City, Iowa, for a first-hand look at the dedication and technology behind every motor home we build.



**Recognized Quality** The Recreation Vehicle Dealer Association annually rates RV manufacturers and awards the Quality Circle Award to manufacturers that provide exceptional products, service and support. Winnebago Industries is proud to be the only manufacturer that has received this award every year since its inception.



**Committed to Service** We back our motor homes with the industry's best service after the sale:

- 12-month/15,000-mile basic limited warranty
- 36-month/36,000-mile warranty on structure
- 10-year standard limited parts-and-labor roof skin warranty
- Complimentary 24-hour roadside assistance program

- RV Technical Assistance Hotline
- RV Service Appointment Assistance
- Emergency Trip Interruption
- Emergency Message Service
- Nationwide Trip Routing
- Fee-Free Travelers Cheques



- TripSaver Fast Track Parts guarantees that in-stock warranty parts ship directly to your dealer within 24 hours
- National dealer service network



**WIT Club** Winnebago owners are like family. Joining the Winnebago-Itasca Travelers Club is a great way to meet and travel with other Winnebago enthusiasts. Members enjoy:

- Caravans and rallies
- Local and state group activities
- RV travel benefits

For Sales and Service Information, Contact:



THE MOST RECOGNIZED  
NAME IN MOTOR HOMES™

NYSE listing: WGO

Printed in USA

Seat belts are your most important hookup. Always buckle up.  
© 2009 Winnebago Industries, Inc.