

Winnebago
VISTA[®]
2010





Get Into It

Step into Class A comfort with the newly re-styled and upgraded 2010 Winnebago Vista.® With three open and roomy models offering a wide variety of amenities and new features such as a one-piece windshield and available side-view cameras, your Vista will be a perfect fit. A Ford® chassis is standard or choose the available Workhorse™ chassis offered on the 32K.

Sit back and enjoy the standard satellite-ready 32" LCD TV. The 30W gives you the option of a 40" LCD TV with a dining table/buffet.

The full-featured galley includes a large pantry, spacious countertops, a full complement of appliances and the available microwave/convection oven.

Versatile Seating The sofa and dinette house hidden storage compartments and convert into comfortable beds.

Bedroom

The spacious bedroom includes a queen-size bed, which includes underbed storage on the 26P and 32K. The wardrobe provides ample space for your clothes. A 19" LCD TV is also available for you viewing pleasure.



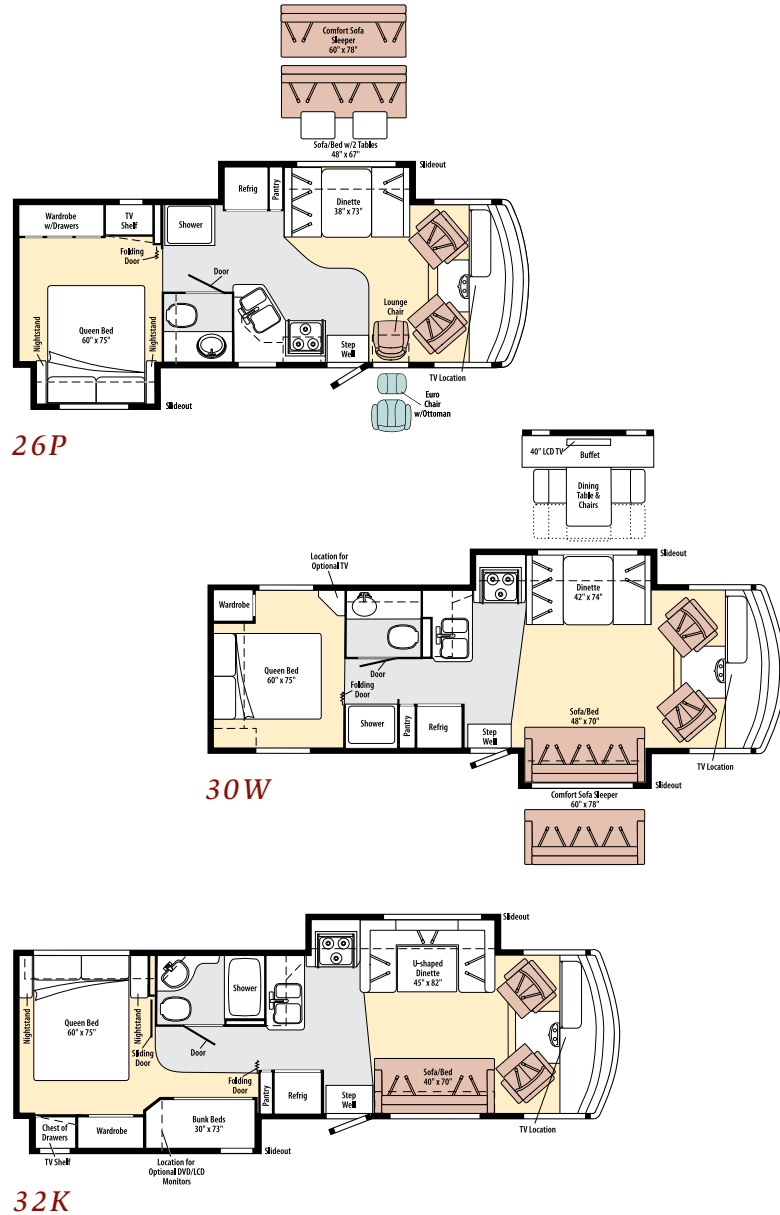
Bunk Beds The bunk beds in the 32K each include a storage shelf and can be equipped with 8.5" LCD monitors, DVD players and headphones.



GoWinnebago.com Watch key feature videos, take interactive tours, see the latest promotional offers and a whole lot more at GoWinnebago.com.

Floorplans & Specifications

Dimensions shown are for sleeping space only and may vary due to styling differences. Dashed lines denote overhead storage areas. Floorplans and specifications are also available online at GoWinnebago.com.



Setup is a Snap Enjoy more time outdoors with the available awning and the convenient service center that makes quick work of hookups and preparation. If you need a break from the heat, two high-efficiency, ceiling-ducted air conditioners provide welcome relief (one A/C unit on the 26P and 30W). Available tinted, dual-glazed windows provide additional thermal efficiency. Smart Storage™ elements, such as the side storage compartment on the 32K, let you bring along all of your gear, including large and bulky items. A winterization package comes standard for convenient, end-of-season prep and hydraulic jacks are available for easy leveling at the campsite. The durable fiberglass roof looks great for years—the perfect complement to the available full-body paint.

Weights & Measures

	26P	30W	32K
Length	26'11"	30'11"	33'
Exterior Height ¹	12'4"	12'4"	12'4"
Exterior Width ²	8'5"	8'5"	8'5"
Exterior Storage ³ (cu. ft.)	49.8	89.9	88.6
Awning Length	11'6"	17'	13'
Interior Height	6'8"	6'8"	6'8"
Interior Width	8'	8'	8'
Freshwater Capacity w/Heater ⁴ (gal.)	64	72	75
Holding Tank Capacity - Black/Gray ⁴ (gal.)	43/38	37/42	44/46
LP Capacity ⁵ (gal.)	18	18	18
Fuel Capacity (gal.)	75 ^A	75 ^A /40 ^C	75 ^A /75 ^B /40 ^C
GCWR ⁶ (lbs.)	26,000 ^A	26,000 ^A /26,000 ^C	26,000 ^{A,B,C}
GVWR ⁶ (lbs.)	16,000 ^A	18,000 ^A /20,500 ^C	22,000 ^A /22,000 ^B /20,500 ^C
GAWR - Front (lbs.)	6,500 ^A	7,000 ^A /7,500 ^C	7,500 ^{A,B,C}
GAWR - Rear (lbs.)	11,000 ^A	12,000 ^A /13,500 ^C	15,000 ^A /14,500 ^B /13,500 ^C
Wheelbase	158"	190"	208"

A Ford® F53 Chassis **B** Workhorse™ W22 Chassis **C** Workhorse W20 Diesel Chassis

Chassis

Ford® F53 Chassis

- 362-hp 6.8L Super Duty V10 SEFI Triton® engine
- TorqShift™ 5-speed automatic transmission w/tow/haul
- 175-amp. alternator (130-amp. early production)

Hydraulic brakes w/ABS

Trailer Hitch⁴: 5,000-lb. drawbar/500-lb. maximum vertical tongue weight

7-pin connector

Stainless steel wheel liners

26P	30W	32K
○	○	○

Optional Equipment

○ Automatic hydraulic leveling jacks

○ Workhorse™ W22 Chassis

- GM Vortec™ 8.1L V8 340-hp engine
- Allison® 1000 series 6-speed automatic transmission w/overdrive
- 145-amp. alternator

○ Workhorse W20 Diesel Chassis

- Navistar MaxxForce® 7 V8 230-hp engine
- Allison 1000 series 6-speed automatic transmission w/overdrive
- 145-amp. alternator

Cab Conveniences

Cab Seats: armrests, lumbar support and multi-adjustable slide/recline/swivel

AM/FM stereo w/CD player

Convenience tray w/cupholders

Chassis/house battery radio power switch

Power steering w/tilt wheel

Cab wraparound curtain

Cruise control

Map lights

Sunvisors

C.B. wire prep

26P	30W	32K
○	○	○

Optional Equipment

○ Rearview monitor system w/one-way audio

○ Sideview video camera system (requires rearview monitor system)

○ Power mirrors w/defrost

○ 6-way power driver seat

○ Defroster fans

○ AM/FM stereo w/CD/DVD player, input jack, remote and alarm clock

Interior

32" LCD TV (NA 30W w/available dining table/buffet/40" LCD TV)

Amplified digital TV antenna system

Key-activated slideroom master lock switch

Satellite system ready

Pleated blinds (lounge, dinette, bedroom)

Mini blinds (galley)

OnePlace® systems center

Roof vent (lounge)

Powered roof vent (bath)

Tinted windows

12-volt powerpoints

26P	30W	32K
○	○	○

Optional Equipment

○ 40" LCD TV w/dining table/buffet

○ Tinted, dual-glazed thermo-insulated windows

○ Day/night pleated blinds (lounge, dinette, bedroom)

○ Powered ventilator fan (lounge)

○ Vinyl floor covering (excludes cab, slideroom floor and bedroom)

○ Interior Upgrade Package: galley backsplash, Dream Dinette™ dining table, range cover, 2 sink covers, refrigerator insert upgrade, 2 throw pillows, flip-up countertop extension (NA 30W)

○ Satellite dish antenna

Galley

Laminate countertops

2-door refrigerator/freezer

Microwave oven

3-burner range top w/storage below

Vented range hood

26P	30W	32K
○	○	○

Optional Equipment

○ 3-burner range w/oven

○ Microwave/convection oven

Bath

Laminate countertop

Flexible showerhead

Textured glass shower door

Skylight

Bedroom

Queen bed w/innerspring mattress

Bedsread, pillows and shams

Bunk beds w/foam mattresses and privacy curtains (32K)

26P	30W	32K
○	○	○

Optional Equipment

○ 2 DVD players w/8.5" LCD monitors and headphones (bunk area)

○ 19" LCD TV, cable wall input is provided

Exterior

Automatic entrance door steps

Storage compartments

Main entrance w/screen door

Mud flaps

Porch light

26P	30W	32K
○	○	○

Optional Equipment

○ Patio awning

○ Acrylic patio awning w/metal wrap (requires full-body paint)

○ Ladder

○ Entertainment Center: AM/FM stereo, CD player, remote, AC duplex, removable TV table, speakers and lockable compartment

○ Premium high-gloss sidewall skin

Heating & Cooling System

14,800 BTU roof-mount air conditioner (26P & 30W)

Two high-efficiency roof-mount air conditioners w/energy management system (32K)

30,000 BTU low-profile furnace (26P & 30W)

35,000 BTU low-profile furnace (32K)

26P	30W	32K
○	○	○

Optional Equipment

○ 1 A/C heat pump

○ 2 high-efficiency A/C heat pumps

Electrical System

AC/DC load center, 45-amp. converter/charger (26P & 30W)

AC/DC electrical distribution system, 45-amp. converter/charger w/remote (32K)

30-amp. power cord

PowerLine® energy management system (32K)

4,000-watt Cummins Onan® MicroQuiet™ gas generator (26P & 30W)

5,500-watt Cummins Onan Marquis Gold™ gas generator (32K)

2 deep-cycle Group 24 batteries

Battery disconnect system (chassis and coach)

Automatic dual battery charge control

Auxiliary start circuit

26P	30W	32K
○	○	○

Optional Equipment

○ 50-amp. power cord, shoreline/generator automatic changeover switch

○ 3,600-watt Cummins Onan MicroQuiet LP generator (requires diesel chassis)

○ 5,500-watt Cummins Onan Marquis Gold LP generator (requires diesel chassis)

○ 300-watt inverter

Plumbing System

Service Center: cable TV input, pressurized city water hookup w/diverter valve, drainage valves, portable satellite dish hookup, power cord, 10' sewer hose

6-gallon water heater

Heated holding-tank compartment

LP tank

On-demand water pump

TrueLevel™ holding-tank monitoring system

Winterization Package: water heater bypass valve and siphon tube

26P	30W	32K
○	○	○

Optional Equipment

○ Exterior wash station w/lighted pump switch

○ 6-gallon 120VAC water heater w/motoraid

Safety

Seat belts

Child seat tether anchor (forward-facing dinette bench)

LP, smoke and carbon monoxide detectors

10 BC fire extinguisher

Ground fault interrupter

High-mount brake lamp

Warranty⁷

12-month/15,000-mile basic warranty⁸

36-month/36,000-mile limited warranty on structure⁸

10-year limited parts and labor warranty on roof skin⁸

○ Optional

NA Not Available

- The height of each model is measured to the top of the tallest standard feature and is based on the curb weight of a typically equipped unit. The actual height of your vehicle may vary by several inches depending on chassis or equipment variations. Please contact your dealer for further information.
 - Vista floorplans feature a wide-body design – over 96". In making your purchase decision, you should be aware that some states restrict access on some or all state roads to 96" in body width. Before making your purchase decision, you should confirm the road usage laws in the states of interest to you.
 - The load capacity of your motor home is designated by weight, not by volume, so you cannot necessarily use all available space when loading your motor home.
 - Capacities are based on measurements prior to tank installation. Slight capacity variations can result due to installation applications.
 - Capacities shown are tank manufacturer's listed water capacity (W.C.) Actual filled LP capacity is 80% of listing due to overfilling prevention device on tank.
 - Actual towing capacity is dependent upon your particular loading and towing circumstances, which includes the GVWR, GAWR and GCWR as well as adequate trailer brakes. Please refer to the Operator's Manual of your vehicle for further towing information.
 - See separate chassis warranty.
 - See your dealer for complete warranty information.
- Not all items available in combination. See dealer for details.

Winnebago Industries® continuing program of product improvement makes specifications, equipment, model availability and prices subject to change without notice. Comparisons to other motor homes are based on the most recent information available at printing.

Built Proudly by

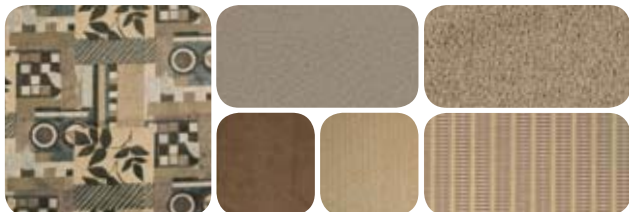


NYSE listing: WGO

For Sales and Service Information Contact:

Interior Décor

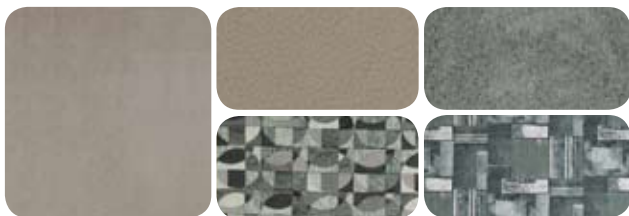
Choose from three fabric collections and four cabinet woods, all with satin nickel hardware.



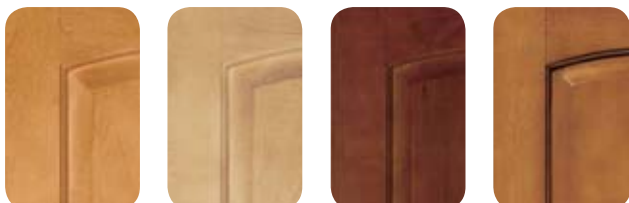
Beechnut with available Putty UltraLeather™



Autumn Moss with available Bark UltraLeather



Silver Ice with available Putty UltraLeather



Sierra Maple

Belmont Maple

Forest Cherry

Coffee-Glazed
Sierra Maple

Exteriors

The Legacy Rolls On

For more than fifty years, Winnebago Industries® has been creating the RVs and motor homes that have enabled people to live their dreams, see the country, visit friends and enjoy more time together as a family. The Vista continues the Winnebago legacy of combining innovations, features and quality in a coach you'll be proud to call home.



STANDARD GRAPHICS



Granite
DELUXE GRAPHICS



Dark Bronzemist
DELUXE GRAPHICS



Mojave
FULL-BODY PAINT



Moonstone
FULL-BODY PAINT



Golden Stone
FULL-BODY PAINT



THE MOST RECOGNIZED
NAME IN MOTOR HOMES™