

Winnebago  
**TOUR**  
2010





## Winnebago TOUR®

Life on the road is at its finest in the Winnebago Tour®. You'll enjoy upscale amenities, countless creature comforts and the smooth performance of the heralded Maxum™ Chassis. With a 400-horsepower Cummins® diesel engine and unprecedented storage volume, there are no limits to your next adventure. For even greater capacity, choose the new tag axle 42AD with an impressive 44,320-lb. gross vehicle weight rating. Like all models, it is loaded with SmartSpace™ innovations that make the most of the available space. Make plans to hit the road this year in a 2010 Winnebago Tour.



## Live It Up

Ceramic tile flooring and your choice of coffee-glazed cabinetry welcome you into a coach that has it all. Multiple seating configurations give you the option of the Rest Easy® multi-position lounge or the available Rest Easy theater seating. They provide a great view of the 40" LCD TV over the cab and the additional 40" LCD TV in the living area of the 40WD and 42AD.

The surround-sound entertainment center can be enhanced with the available King-Dome® HD-ready, in-motion satellite system for more viewing options on the road. Day/night pleated shades come standard, or you can choose the duo roller shades with a blackout shade and a sunscreen for adjustable light and privacy levels.

Stay cool with TrueAir® residential central air conditioning or three powerful roof-mounted air conditioning units on the 42AD. Both systems include a heat pump to warm the coach on cool mornings.



**GoWinnebago.com** Watch key feature videos, take interactive tours, see the latest promotional offers and a whole lot more at [GoWinnebago.com](http://GoWinnebago.com).



**Extendable Sofa** The sectional sofa in the 40BD and 42AD expands when the slideout is extended to fit the entire family.



## Kitchen Delight

Corian® countertops and full-extension drawer slides make cooking a joy. Prepare fantastic meals on the Amana® range with sealed burners and the microwave/convection oven with an exterior vented range fan. You can also upgrade to the microwave/speedcook oven for even shorter cook times. A stainless steel refrigerator/freezer upgrade with an ice and water dispenser can be selected. Aqua-Hot® hydronic zone heating provides continuous hot water in the 40CD and 42AD. A dishwasher is also available (NA 40WD).

Depending on your model, dining options may include a dining table, BenchMark® full-comfort dinette, dining table/buffet or the U-shaped UltraLeather dinette with sliding tabletop. After dinner, clean up any crumbs with the available Dirt Devil® central vacuum system.



**Theater Seating** The Rest Easy theater seating has a center console and twin UltraLeather recliners that convert into beds.



**Rest Easy** The Rest Easy multi-position lounge glides from couch to recliner to bed at the touch of a button.



**Drawers** Drawers open wide on full-extension slides for easy access.







## A Bedroom Oasis

Find yourself revitalized after a night on the Ideal Rest® body-conforming memory foam mattress. Or choose the Sleep Number® bed by Select Comfort™ in the 40BD and 40WD for adjustable firmness on each side of the bed. All models come with abundant storage and a stereo system with a CD/DVD player, MP3 input and alarm clock. The 40CD offers several unique features, including a secluded master bathroom and a 26" LCD TV that can be raised and lowered electronically.



**Bedroom** The bedroom features ample storage and an LCD TV.



**Washer/Dryer** Do laundry at your convenience when you add the washer/dryer combo or this stackable washer and dryer (40CD and 42AD).



**Bathroom** The upscale bathroom features Corian countertops and a skylight.



42AD Night Sky with Coffee-Glazed Forest Cherry

sleep number by SELECT COMFORT Ideal Rest

**Adjustable Bed** The powered adjustable king bed in the 40CD and 42AD positions you perfectly whether you're sleeping, reading or watching TV.



## Drive On

Take control of your next adventure with six-way power cab seats and a tilt/telescope Smart Wheel.™ The passenger seat comes with a footrest and can be upgraded to an oversized queen chair. Use the rearview monitor system with one-way audio to make backing and maneuvering easier. You can also add the sideview camera system that automatically activates with the turn signal to assist you through turns.

Pass the time by listening to the RV Radio® It comes with a CD player, weather band and an input for your MP3 player. Upgrade to the Sirius® satellite radio Plug-N-Play system and receive a six-month complimentary subscription. It includes a second docking station for your car and a connector that allows you to control your iPod through the dash stereo.



**Roller Shades** Control light and privacy levels with duo solar/blackout roller shades.



**GPS** Let turn-by-turn voice navigation guide you when you add the Garmin® GPS.



**Heated Seats** Available heated seats are a must-have for those who travel in colder climates.



## Travel on Your Terms

The Tour adds flexibility to your travels, starting with its multitude of power sources. Four Group 31 deep-reserve batteries and a 2,000-watt inverter/charger come in handy when you aren't connected to a shoreline power source. The 8,000-watt Cummins Onan® Quiet Diesel™ generator (10,000-watt on the 42AD) provides power for extended dry camping.

Campsite hookups are quick and easy in the service center with color-coded connection points. The QuickPort® service connection hatch allows the bay door to close even when the hoses are connected. The QuickConnect® coupling valve makes sewer hookups quick, clean and easy. Automatic leveling jacks with 3-position controls allow you to level the coach from the driver seat, entrance door or service center to easily monitor the jacks as you lower them.

The **ONEPLACE™** systems center lets you monitor and control key systems from one convenient location.



**Tag Axle** The tag axle 42AD has an impressive 44,320-lb. GVWR that lets you travel without reservation.



The **POWERLINE™** energy management system monitors electrical usage and automatically cycles appliances on and off to prevent tripped campground circuit breakers.



**TRUELEVEL™** holding-tank monitoring system uses sonar technology to read liquid levels from outside the tank. There are no probes to corrode or clog, just accurate readings time after time.



**TRUEAIR™** residential-style central air conditioning w/heat pump (NA 42AD) delivers even cooling throughout the coach.



## Maxum Chassis

The Maxum Chassis brings together our exclusive SuperStructure® technology and the Freightliner® XCL Chassis for a stronger frame and exceptional comfort on the road. Take a ride in the Winnebago Tour and feel how the innovative Maxum Chassis delivers the smoothest ride and handling ever.

Up to 220 cubic feet of exterior storage holds everything you could possibly want for an extended adventure. Winnebago Industries' Smart Storage™ philosophy creates taller compartment openings, larger pass-through compartments, and a storage capacity that no other chassis in its class can match. The revolutionary lowered-rail design increases the cross-coach storage height for the most efficient use of space.

The Maxum Chassis is backed by a 3-year/50,000-mile limited warranty, including towing and roadside assistance and more than 400 North American service locations, 90 Freightliner® RV Oasis locations and a 24/7 help line.



**Entertainment Center** Add the exterior entertainment center with a 32" LCD TV, CD/DVD player and stereo.



THE LEADER AT EVERY TURN™



### The Maxum Advantage

- 34,320-lb. GVWR (40BD, 40CD, 40WD)
- 44,320-lb. GVWR w/tag axle (42AD)
- NeWay® air suspension
- 400-hp Cummins® ISL clean-air diesel engine
- Engine compression brake
- 55 degree wheel cut
- Allison® 3000 MH 6-speed transmission
- 10,000-lb. hitch<sup>6</sup> (15,000-lb. on 42AD)
- 4-wheel ABS
- Battery disconnect system



**Maximum Storage** Exterior storage is configurable in the main compartments with movable panels that let you customize the space to best fit your needs. Or you can choose the available sliding tray (shown here) that slides out on either side of the coach.

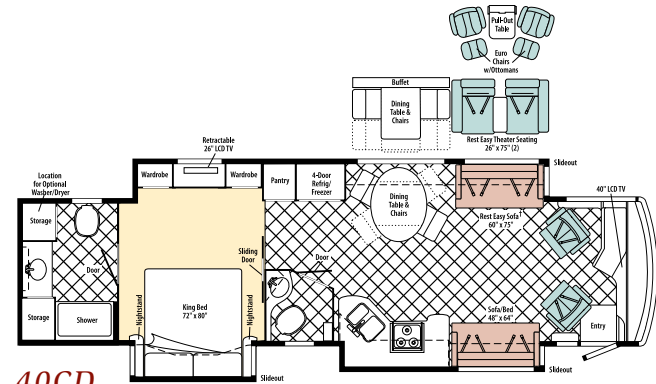


# Floorplans & Specifications

Dimensions shown are for sleeping space only and may vary due to styling differences. Dashed lines denote overhead storage areas. Floorplans and specifications are also available online at [GoWinnebago.com](http://GoWinnebago.com).



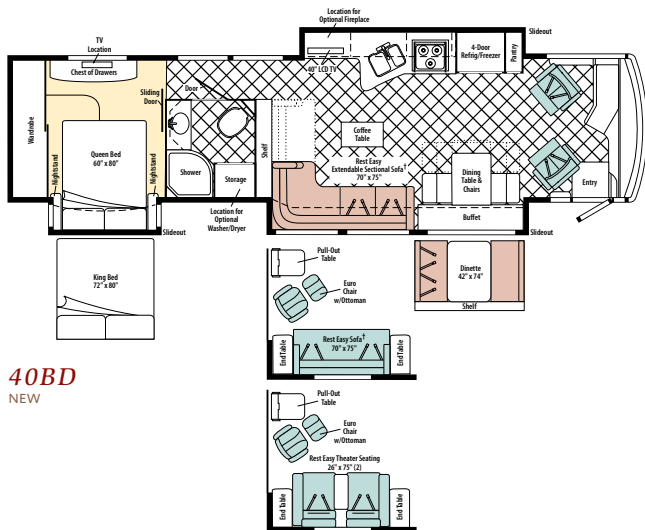
Weights & Measures	40BD	40CD	40WD	42AD
Length	40'7"	40'7"	40'7"	42'10"
Exterior Height <sup>1</sup>	12'4"	12'4"	12'4"	12'4"
Exterior Width <sup>2</sup>	8'5"	8'5"	8'5"	8'5"
Exterior Storage <sup>3</sup> (cu. ft.)	217.9	217.8	221.8	193.0
Awning Length	15'	18'	15'11"	20'
Interior Height	7'	7'	7'	7'
Interior Width	8'	8'	8'	8'
Freshwater Capacity w/Heater <sup>4</sup> (gal.)	100	90	100	90
Holding Tank Capacity - Black/Gray <sup>4</sup> (gal.)	57/94	54/117	70/54	53/105
LP Capacity <sup>5</sup> (gal.)	30	30	30	30
Fuel Capacity (gal.)	100	100	100	150
GCWR <sup>6</sup> (lbs.)	44,320	44,320	44,320	59,320
GVWR (lbs.)	34,320	34,320	34,320	44,320
GAWR - Front (lbs.)	14,320	14,320	14,320	14,320
GAWR - Rear (lbs.)	20,000	20,000	20,000	30,000
Wheelbase	276"	276"	276"	279" + tag



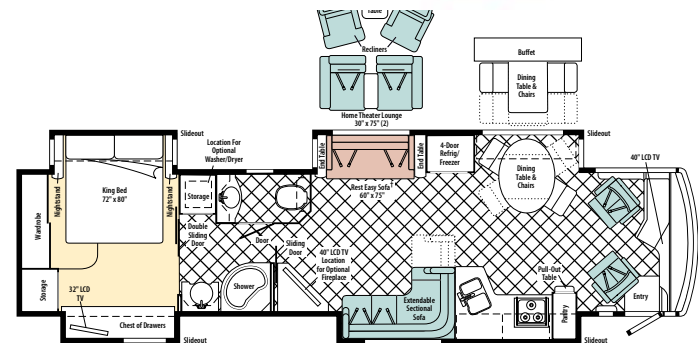
**40CD**  
NEW



**40WD**



**40BD**  
NEW



**42AD**  
NEW

† Available with single or dual controls. Dual control option includes only two seat belts.



## Maxum™ Freightliner® Chassis

34,320-lb. GVWR (40BD, 40CD, 40WD)  
 44,320-lb. GVWR w/tag axle (42AD)  
 400-hp Cummins® turbo-charged ISL 8.9L diesel engine  
 Allison® 3000 MH 6-speed electronic transmission w/engine compression brake  
 Information display center  
 NeWay® front and rear suspension  
 160-amp. alternator  
 Air brakes w/ABS  
 Automatic leveling jacks w/3-position controls  
 Tow power package w/7-pin trailer wiring and I.P. wiring  
 Trailer Hitch®: 10,000-lb. drawbar/500-lb. maximum vertical tongue weight (40BD, 40CD & 40WD)  
 Trailer Hitch®: 15,000-lb. drawbar/1,500-lb. maximum vertical tongue weight (42AD)  
 Stylized aluminum wheels

## Cab Conveniences

Cab Seats: armrests, lumbar support, multi-adjustable slide/recline/swivel and six-way power driver/passenger seat pedestals  
 Passenger seat footrest  
 RV Radio®: AM/FM stereo, CD player w/remotes, weather band, iPod/MP3 input  
 Tilt/telescoping SmartWheel™ steering wheel  
 Cruise control  
 Power door locks w/remote keyless entry  
 Electric mirrors w/remote and defrost  
 Rearview monitor system w/one-way audio  
 Two 12-volt powerpoints  
 Powered stepwell cover  
 Two-speed built-in defroster fans  
 Slider window w/screen for driver and passenger  
 Duo roller shades w/blackout shades and solar sunscreen; powered for windshield, manual for driver and passenger windows  
 Chassis/house battery radio power switch  
 Electronic compass/thermometer  
 Map lights  
 C.B. wire prep

### Optional Equipment

40BD	40CD	40WD	42AD
○	○	○	○
○	○	○	○
○	○	○	○
○	○	○	○
○	○	○	○
○	○	○	○
○	○	○	○

**Garmin® GPS navigation system** (requires color monitor system)  
**Sirius® Plug-N-Play satellite radio:** complimentary 6-month subscription, 2 docking ports and iPod interface connector  
**Color monitor system w/rear and side cameras, one-way audio**  
**Sideview camera system**  
**Heated seats**  
**Heated queen passenger seat**

## Interior

40" LCD HDTV (40BD & 40CD)  
 Two 40" LCD HDTVs (40WD & 42AD)  
 Home Theater Sound System: amplifier/CD/DVD player, receiver, 5 speakers and 2 subwoofers  
 Amplified digital TV antenna  
 Key-activated slideroom master lock switch  
 Area rug (lounging area 40BD, rear bathroom 40CD)

HD video selection system  
 Satellite system ready (front and bedroom)  
 Day/night pleated shades (lounging, dinette and bedroom)  
 Mini blinds (galley & bath)  
 OnePlace™ systems center  
 Tinted, dual-glazed, thermo-insulated coach windows  
 Powered roof vent (galley & bath)

### Optional Equipment

40BD	40CD	40WD	42AD
○	○	○	○
○	○	○	○
○	○	○	○
○	○	○	○
○	○	○	○
○	○	○	○
○	○	○	○
○	○	○	○

**Dirt Devil® central vacuum cleaner w/vacpan**  
**Washer/dryer combination**  
**Stackable washer/dryer**  
**King-Dome® in-motion satellite dish, dual LNB, HD-ready** (front and bedroom)  
**King-Dome automatic satellite dish antenna, HD-ready** (front and bedroom)  
**Powered digital antenna**  
**Electric fireplace**  
**Duo roller shades w/blackout shade and solar sunscreen** (lounging, dinette and bedroom)

## Galley

Corian® countertops and sink covers  
 4-door refrigerator/freezer w/icemaker  
 Stainless steel microwave/convection oven w/sensor cook and vented range fan  
 3-burner range top w/glass covers and storage below  
 Filtered, cold-water faucet

### Optional Equipment

40BD	40CD	40WD	42AD
○	○	○	○
○	○	○	○
○	○	○	○
○	○	○	○

**Stainless steel refrigerator/freezer w/water and ice dispenser, auto defrost**  
**Stainless steel drawer-style dishwasher**  
**Stainless steel microwave/speedcook oven w/exterior vented range fan**

## Bath

Corian countertop  
 Flexible showerhead  
 Shower w/wall surround and shower seat  
 Moen® Posi-Temp® shower valve  
 Textured glass shower door  
 Skylight

## Bedroom

26" LCD HDTV (40BD, 40CD & 40WD)  
 32" LCD HDTV (42AD)  
 Stereo System: AM/FM, CD/DVD, alarm clock, iPod/MP3 input, headphone jack, speakers (2)  
 Ceiling fan  
 Ideal Rest® memory foam mattress  
 Bedspread, pillows and shams  
 Powered adjustable bed (40CD & 42AD)

### Optional Equipment

40BD	40CD	40WD	42AD
○	○	○	○
○	○	○	○

**Sleep Number® bed** (NA w/powered bed)  
**Powered adjustable bed**

## Exterior

Auxiliary docking lamps  
 Main entrance w/screen door  
 Electric patio awning w/wind sensor and remote  
 Electric entrance awning  
 KeyOne™ lock system  
 Lighted storage compartments  
 4 storage containers w/lids  
 7' folding step ladder  
 Automatic entrance steps  
 Ladder  
 Porch light  
 Lower front protective mask  
 Rear mud flaps  
 Double clear-coat exterior  
 Stainless steel full-width mudguard

### Optional Equipment

40BD	40CD	40WD	42AD
○	○	○	○
○	○	○	○
○	○	○	○
○	○	○	○

**Entertainment Center:** 32" LCD TV, AM/FM stereo, CD/DVD w/remote, iPod/MP3 input w/iPod connector, TV jack, radio antenna, power outlets, speakers (2)  
**90° slideout storage compartment tray**  
**Portable refrigerator/freezer**  
**Acrylic window awnings**  
**Second electric patio awning w/wind sensor and remote**

## Heating & Cooling System

TrueAir® residential central air conditioning w/heat pump (40BD, 40CD & 40WD)  
 13,500 BTU roof air conditioners (3) w/heat pump and condensate pump (42AD)  
 35,000 BTU primary furnace (40BD & 40WD)  
 20,000 BTU secondary furnace (40BD & 40WD)  
 Aqua-Hot® 450 hydronic dual-zone heating system w/59,000 BTU furnace and continuous hot water (40CD & 42AD)

## Electrical System w/ QuickPort®

Service Center: lighted, 120v AC power, cable input, power cord  
 50-amp. super-flex power cord  
 2,000-watt inverter/charger w/remote panel  
 8,000-watt Cummins Onan® Quiet Diesel™ generator (40BD, 40CD & 40WD)  
 10,000-watt Cummins Onan Quiet Diesel generator (42AD)  
 4 deep-cycle, Group 31 marine/RV batteries  
 Battery disconnect system (coach and chassis)  
 PowerLine® energy management system  
 Automatic dual-battery charge control  
 Auxiliary start circuit  
 AC/DC electrical distribution system  
 Shoreline/generator automatic changeover switch  
 Solar panel battery charger  
 Chassis battery charger/maintainer

### Optional Equipment

40BD	40CD	40WD	42AD
○	○	○	○
○	○	○	○
○	○	○	○

**Automatic generator start system**  
**Power cord reel**

## Plumbing System w/ QuickPort & QuickConnect®

Service Center: lighted, city water hookup w/diverter ll, fresh water drain, drainage valves, exterior wash station w/pump switch, glove holder, black holding-tank flushing system, monitor panel, paper towel holder, portable satellite dish hookup, 20' sewer hose, soap dispenser  
 On-demand water pump  
 10-gallon water heater w/motoraid (40BD & 40WD)  
 Heated holding-tank compartment  
 TrueLevel™ holding-tank monitoring system  
 Winterization Package: water heater bypass valve and siphon tube  
 Full coach water filtration system

### Optional Equipment

40BD	40CD	40WD	42AD
○	○	○	○
○	○	○	○

**Water supply hose w/reel**  
**10 gal. high-output water heater w/motoraid**

## Safety

Seat belts  
 Child seat tether anchor (40BD & 40WD)  
 LP, smoke and carbon monoxide detectors  
 10 BC fire extinguisher  
 Ground fault interrupter  
 High-mount brake lamps  
 Daytime running lamps  
 Fog lamps

## Warranty<sup>7</sup>

12-month/15,000-mile basic warranty®  
 36-month/36,000-mile limited warranty on structure®  
 10-year limited parts and labor warranty on roof skin®

○ Optional

NA Not Available

- The height of each model is measured to the top of the tallest standard feature and is based on the curb weight of a typically equipped unit. The actual height of your vehicle may vary by several inches depending on chassis or equipment variations. Please contact your dealer for further information.
- Tour floorplans feature a wide-body design – over 96". In making your purchase decision, you should be aware that some states restrict access on some or all state roads to 96" in body width. Before making your purchase decision, you should confirm the road usage laws in the states of interest to you.
- The load capacity of your motor home is designated by weight, not by volume, so you cannot necessarily use all available space when loading your motor home.
- Capacities are based on measurements prior to tank installation. Slight capacity variations can result due to installation applications.
- Capacities shown are tank manufacturer's listed water capacity (W.C.) Actual filled LP capacity is 80ll of listing due to overfilling prevention device on tank.
- Actual towing capacity is dependent upon your particular loading and towing circumstances, which includes the GVWR, GAWR and GCWR as well as adequate trailer brakes. Please refer to the Operator's Manual of your vehicle for further towing information.
- See separate chassis warranty.
- See your dealer for complete warranty information.

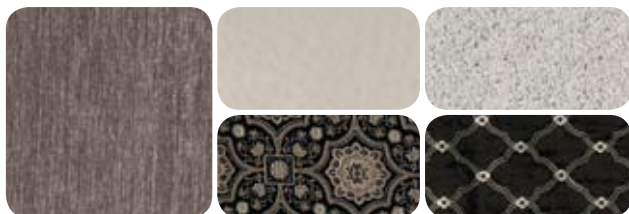
Not all items available in combination. See dealer for details.

Winnebago Industries® continuing program of product improvement makes specifications, equipment, model availability and prices subject to change without notice. Comparisons to other motor homes are based on the most recent information available at printing.

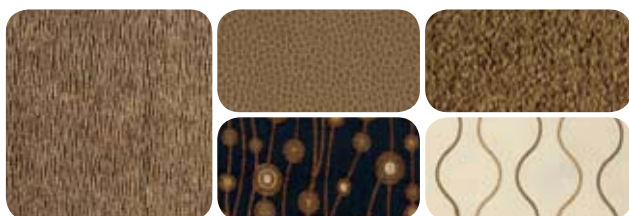


# Interior Décor

Choose from three fabric collections and six cabinet wood choices all with satin nickel hardware.



Night Sky with Stucco UltraLeather™



Sablewood with Fields UltraLeather



Stonehenge with Wheatfield UltraLeather



Honey Cherry

Belmont Maple

Forest Cherry

Coffee-Glazed Honey Cherry

Coffee-Glazed Belmont Maple

Coffee-Glazed Forest Cherry



# Exteriors

## The Legacy Rolls On

For more than fifty years, Winnebago Industries® has been creating the RVs and motor homes that have enabled people to live their dreams, see the country, visit friends and enjoy more time together as a family. The Tour® continues the Winnebago legacy of combining innovations, features and quality in a coach you'll be proud to call home.



**Silver Streak**  
FULL-BODY PAINT



**Bronze**  
FULL-BODY PAINT



**Dark Gray Mica**  
FULL-BODY PAINT



**Cadet Blue**  
FULL-BODY PAINT



**Kalahari Gold**  
FULL-BODY PAINT



**Sunsplash**  
FULL-BODY PAINT



THE MOST RECOGNIZED  
NAME IN MOTOR HOMES™





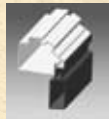
## Built by Winnebago Industries. Built to last.

Winnebago motor homes are built by Winnebago Industries, the company that defined motor homes. The company that built its reputation on quality construction. The company that transformed the motor home concept into a way of life.



Today, Winnebago Industries brings that reputation for quality and more than fifty years of RV innovation to the design and construction of every motor home. It's all a part of SuperStructure<sup>®</sup>, our exclusive system of proprietary structural components that instills in each motor home improved strength and durability.

**Solid Foundation** Steel and aluminum truss work provides a solid, flat foundation for the floor and sidewalls. Our engineers enhance the handling and stability by taking special care to properly distribute the weight of all components.



**Interlocking Joints** The floor, sidewalls and roof are all integrally connected using interlocking joints. This ensures the Tour body is a cohesive unit with maximum strength and durability.

**Attention to Detail** Whether it's sending every Tour through a high-pressure water tunnel to check for leaks or labeling individual wires and barcoding parts to save time and frustration during service, Winnebago Industries considers every detail to ensure your Winnebago motor home provides you with years of pleasure.

**Strong as Steel** Key appliances and cabinetry are secured to a metal substructure for added stability and safety.

**E-Coating** Winnebago Industries employs an automotive-style dip tank process to apply an advanced electrodeposition coating on critical steel components for corrosion protection.

**Thermo-Panel<sup>®</sup> Sidewalls** Invented by Winnebago Industries, Thermo-Panel construction combines a fiberglass panel, high-density block-foam insulation and aluminum support structures to create some of the most long-lasting, lightweight sidewalls in the industry.

Winnebago 1-year-old fiberglass roof



Competitor's 1-year-old rubber roof



**Fiberglass Roof** The Tour features a crowned, one-piece fiberglass roof, backed with a 10-year limited parts-and-labor roof skin warranty. Fiberglass offers superior strength, attractiveness and durability over the rubber roofs found on many competitive models which can chalk, streak and degrade over time. Fiberglass also provides increased puncture and tear resistance.



**GoWinnebago.com** Visit us on the web for more information on all of our motor homes, the latest product updates and a host of web-exclusive content.



**Take a Tour** We're proud of our process, state-of-the-art facilities and the people who make Winnebago Industries number one. We invite you to visit our complex in Forest City, Iowa, for a first-hand look at the dedication and technology behind every motor home we build.



**Recognized Quality** The Recreation Vehicle Dealer Association annually rates RV manufacturers and awards the Quality Circle Award to manufacturers that provide exceptional products, service and support. Winnebago Industries is proud to be the only manufacturer that has received this award every year since its inception.



**Committed to Service** We back our motor homes with the industry's best service after the sale:

- 12-month/15,000-mile basic limited warranty
- 36-month/36,000-mile warranty on structure
- 10-year standard limited parts-and-labor roof skin warranty
- Complimentary 24-hour roadside assistance program

- RV Technical Assistance Hotline
- RV Service Appointment Assistance
- Emergency Trip Interruption
- Emergency Message Service
- Nationwide Trip Routing
- Fee-Free Travelers Cheques



- TripSaver Fast Track Parts guarantees that in-stock warranty parts ship directly to your dealer within 24 hours
- National dealer service network



**WIT Club** Winnebago owners are like family. Joining the Winnebago-Itasca Travelers Club is a great way to meet and travel with other Winnebago enthusiasts. Members enjoy:

- Caravans and rallies
- Local and state group activities
- RV travel benefits

For Sales and Service Information Contact:



THE MOST RECOGNIZED  
NAME IN MOTOR HOMES<sup>™</sup>

NYSE listing: WGO

Printed in USA

Seat belts are your most important hookup. Always buckle up.

© 2009 Winnebago Industries, Inc.