

FOREST RIVER PRESENTS

# ROCKWOOD

FIFTH WHEELS & TRAVEL TRAILERS

FIFTH WHEELS & TRAVEL TRAILERS

ROCKWOOD



ULTRA LITE SERIES · WINDJAMMER SERIES · SIGNATURE ULTRA LITE SERIES

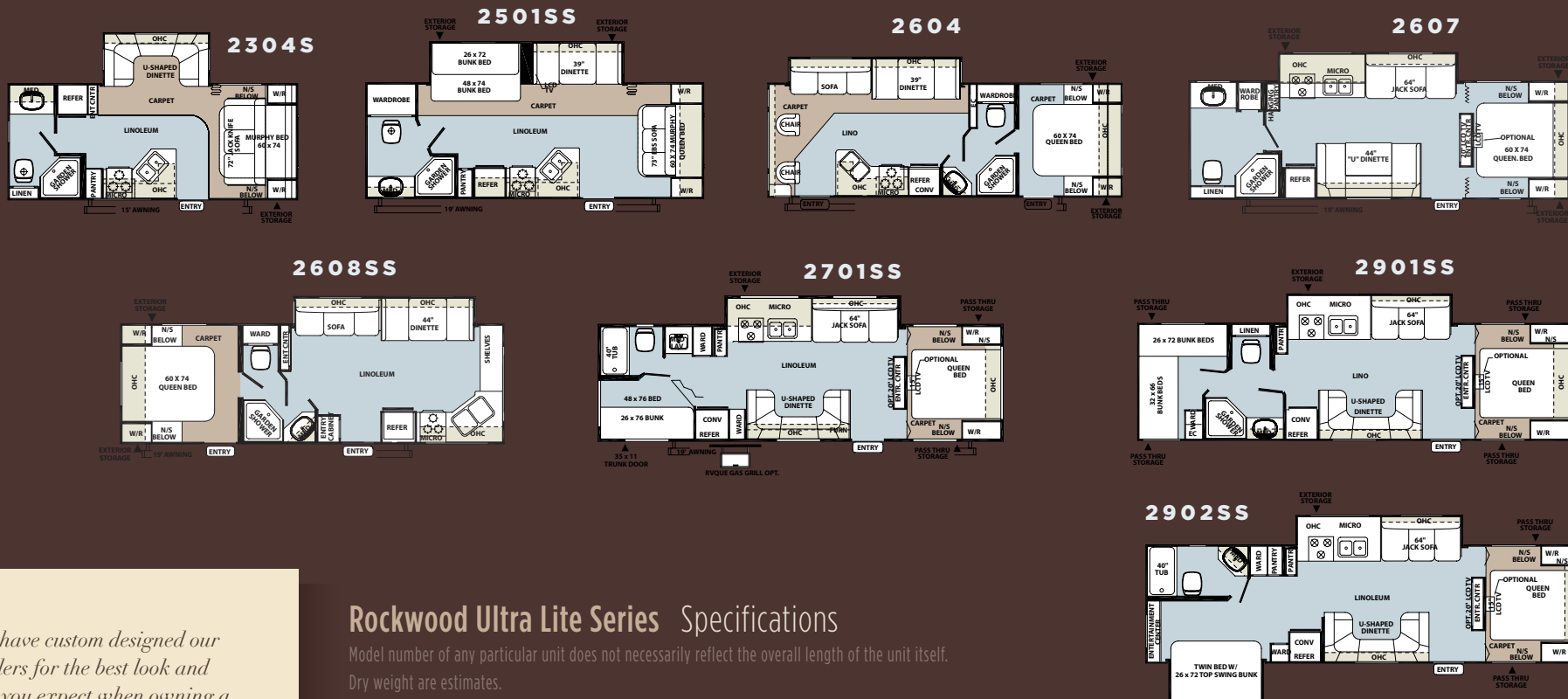




MODEL 2604

UltraLite

# Rockwood Ultra Lite Series Floorplans



We have custom designed our trailers for the best look and feel you expect when owning a Rockwood.

Quality craftsmanship and attention to detail have been put into our trailers — all with you in mind. The expansive queen-size beds, garden tubs and exterior storage are just a few notable features. Take a look for yourself and see why we are proud to call ourselves Rockwood.

## Rockwood Ultra Lite Series Specifications

Model number of any particular unit does not necessarily reflect the overall length of the unit itself. Dry weight are estimates.

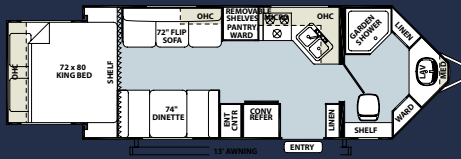
MODEL	2304S	2501SS	2604	2607	2608SS	2701SS	2901SS	2902SS
GVWR (Gross Vehicle Weight Rating)	6639	6505	6629	6639	6712	6666	7372	7598
BASE/DRY UNIT WEIGHT	4467	4732	5228	4822	5379	5120	5189	5432
BASE DRY HITCH WEIGHT	703	505	629	639	712	666	593	614
BASE DRY AXLE WEIGHT	3764	4227	4599	4183	4667	4454	4596	4818
CARGO CAPACITY	1833	1735	1363	1779	1295	1508	1833	1833
LENGTH	23' 7"	27'	29' 1"	29' 5"	29' 3"	31' 9"	33' 4"	33' 4"
WIDTH	96"	96"	96"	96"	96"	96"	96"	96"
HEIGHT W/O A/C	112"	112"	112"	112"	112"	112"	112"	112"
INTERIOR HEIGHT	78"	78"	78"	78"	78"	78"	78"	78"
FRESH WATER CAPACITY	37 gal	37 gal	37 gal	37 gal	37 gal	37 gal	37 gal	37 gal
GRAY WATER CAPACITY	38 gal	38 gal	38 gal	38 gal	38 gal	76 gal	38 gal	38 gal
BLACK WATER CAPACITY	38 gal	38 gal	38 gal	38 gal	38 gal	38 gal	38 gal	38 gal



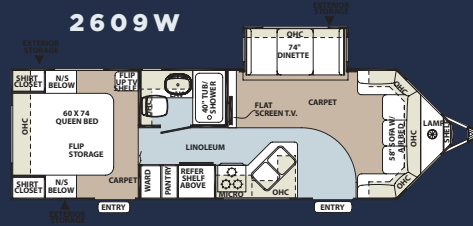


# Rockwood Windjammer Series Floorplans

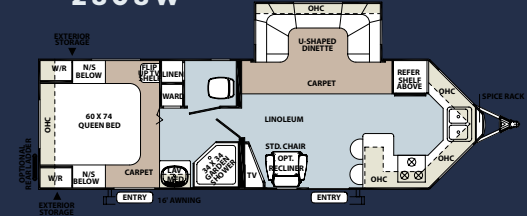
2102W



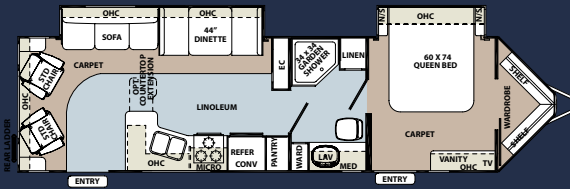
2609W



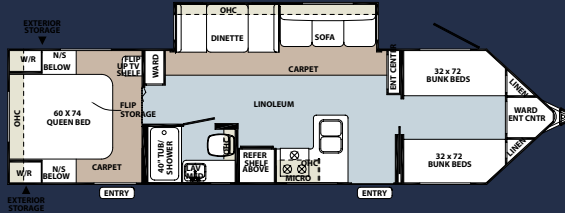
2808W



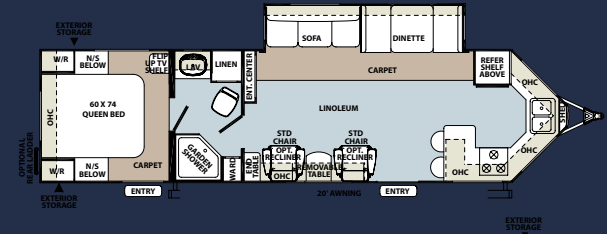
3001W



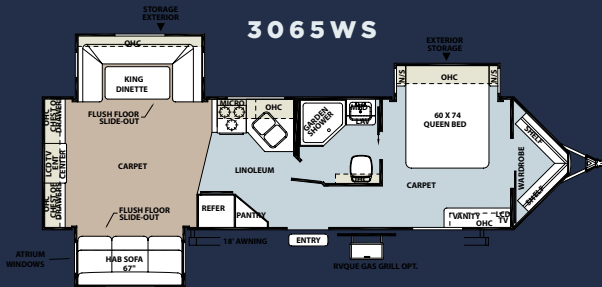
3006W



3008W



3065WS



## Rockwood Windjammer Series Specifications

Model number of any particular unit does not necessarily reflect the overall length of the unit itself. Dry weight are estimates.

MODEL	2102W	2609W	2808W	3001W	3006W	3065W	3008W
GVWR (GROSS VEHICLE WEIGHT RATING)	6996	8035	7992	8812	8415	8564	8579
BASE/DRY UNIT WEIGHT	4670	5774	5758	6479	6200	6642	6240
BASE DRY HITCH WEIGHT	585	710	967	812	946	564	965
BASE DRY AXLE WEIGHT	4085	5064	4791	5667	5254	6078	5275
CARGO CAPACITY	1900	1900	1900	1888	1900	1440	1900
LENGTH	24' 8"	29' 5"	29' 10"	34' 1"	34' 1"	34' 1"	34' 1"
WIDTH	96"	96"	96"	96"	96"	96"	96"
HEIGHT W/O A/C	117"	117"	117"	117"	117"	117"	117"
INTERIOR HEIGHT	78"	78"	78"	78"	78"	78"	78"
FRESH WATER CAPACITY	43 gal	43 gal	43 gal	43 gal	43 gal	43 gal	43 gal
GRAY WATER CAPACITY	38 gal	32 gal	70 gal	38 gal	38 gal	38 gal	70 gal
BLACK WATER CAPACITY	38 gal	38 gal	38 gal	38 gal	38 gal	38 gal	38 gal

### Slide-Out Options



\*\* Slide options available on Signature/Windjammer super slides only

The Rockwood Windjammer uses every possible space for interior room and storage, thanks to its "V" nose design. The aerodynamic, fully vacuum-bonded exteriors can accommodate most trucks on the market. A variety of standards and options gives extensive customization for each individual consumer.



Windjammer

MODEL 3001W



SADDLE DECOR WITH OAK



# ROCKWOOD Features



A



B



C



D1



D2



D3



E



F



G

*Rockwood takes careful consideration to each feature added into each product produced. Every detail is considered ranging from extra sleeping room, storage, comfort and convenience.*

*Take time to review the features listed below and match them with the competition's products. We're confident you'll discover Rockwood the superior choice.*

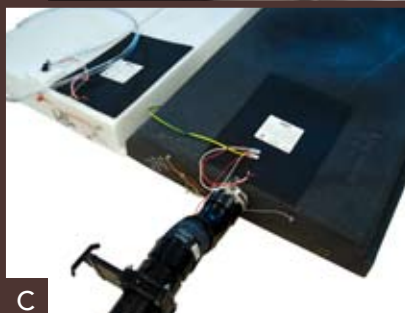
- A** Extra Large large dinette storage drawers w/ full extension drawer guides
- B** Full extension metal drawer guides in the kitchen
- C** Day night shades (*Std. on Signature/Windjammer and opt. on Ultra Lite*)
- D1** Air Bed Sofa
- D2** Full 60X80 Queen air mattress on Sofa
- D3** Additional storage under sofa
- E** Forest River Switch Center (*N/A Ultra Lite*)
- F** Gaming Plate (*Std on most models*)
- G** Serta Residential grade mattress (*N/A Ultra Lite*)



A



B



C



D



E

- A** Door side cable hook up (N/A Ultra Lite)
- B** Heated pass through storage. (Std on all 5th Wheels)
- C** Heated holding tanks with 12 Volt heat pads. (Std on Signature Ultra Lite, Windjammer and Opt. on Ultra Lite)
- D** Free-standing chair with seat storage and table extension (Opt.)
- E** Large LCD TV and Entertainment Center (Std on most models)

Espresso



Saddle



Sage



Cherry Décor Option



Oak Décor Option



Standard Linoleum



Tuscan Cream Interior



Wood-Look Linoleum  
(Only available with Tuscan Cream and Combo Décor)

# ROCKWOOD Construction

*Rockwood takes pride in constructing the very best products possible in each price point. From our entry level units to our top of the line products, no short cuts are taken to achieve excellence.*

*From the all-steel I-beams to the residential interior amenities to the vacuum-bonded exteriors, Rockwood products are quality-built from the ground-up.*



**A**



**B**



**C**



**D**



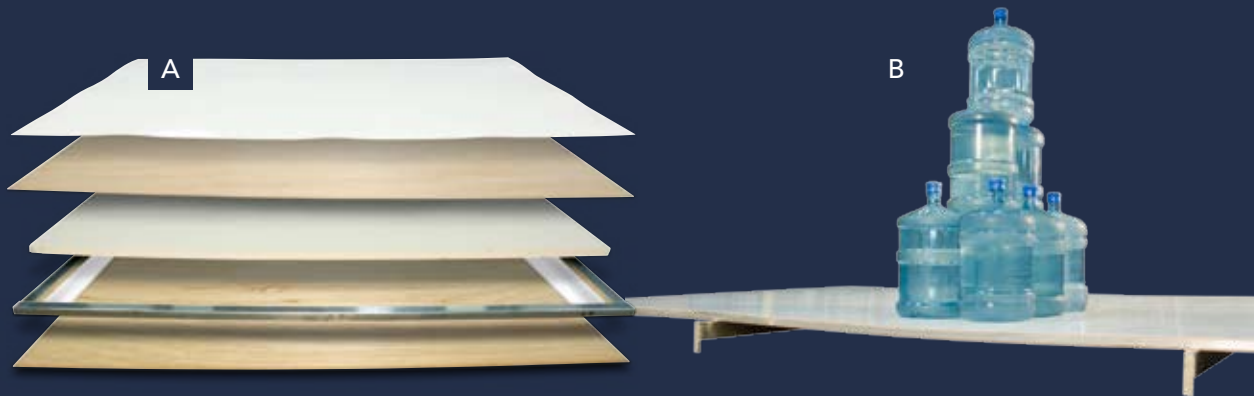
**E**



**F**

- A** Aluminum bed frame with lid wood drawer storage. (Drawer storage most models)
- B** Aluminum dinette frames for added strength and weight savings
- C** Front window with rock guard for additional daylight (Most models)
- D** TPO front cap adds strength and durability. (Std. Signature TT and FW)
- E** All Steel "I" beam frame construction
- F** Enclosed underbelly





**A** Rockwood is one of the few light weight manufactures that is a **fully** 6 sided vacuum bonded trailer. Our walls, floors, roof, fronts and backs are all built vacuum bonded to ensure a light weight strong structural trailer.

**B** Structurally engineered materials makes our vacuum-bonded walls some of the strongest in the industry.

**C** ALKO® AXLES AND EASY LUBE HUBS  
 · Fully independent wheel suspension.  
 · Lower trailer center of gravity for improved stability.  
 · No metal to metal contact and no springs, shackles, hangers, or U-bolts to break or wear out.

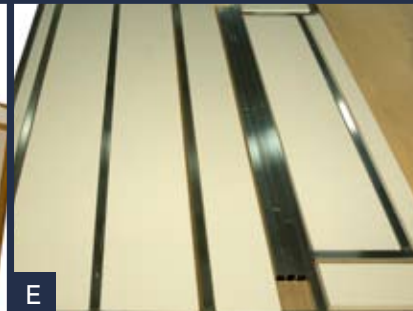
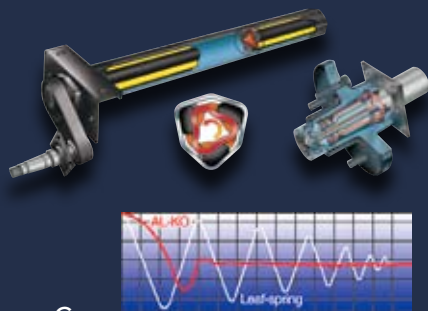
**D** Glued and screwed cabinetry

**E** Vacuumed bonded floor with 16" on center floor joists

**F** Vacuumed bonded roof with 2" radius

**G** Radius roof foam with built in A/C ducts

**H** 4.5" thick roof foam





# Signature Ultra Lite



*The Rockwood Signature Ultra Lite is the ultimate luxury product in the light weight trailer market. Offering more floor plans, features and options than any other in it's class, we stand proudly showcasing 15 years of experience in a premium product.*



# Rockwood Signature Ultra Lite Series Travel Trailer Floorplans

MODEL 8314BSS



# Rockwood Signature Ultra Lite Series Travel Trailer Specifications

Model number of any particular unit does not necessarily reflect the overall length of the unit itself. Dry weight are estimates.

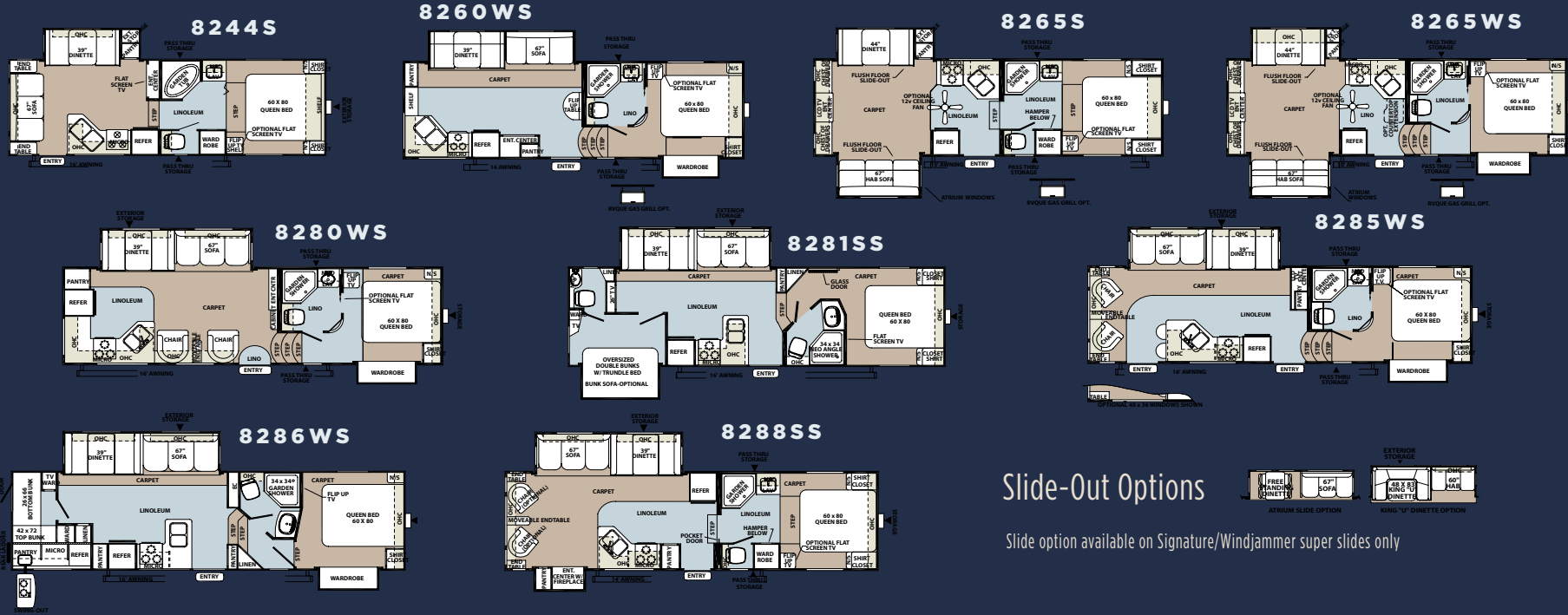
MODEL	8293SS	8293RKSS	8296SS	8298SS	8306SS	8313SS	8314SS	8314BSS	8315BSS	8316SS	8317SS	8317KDSS	8317RKSS	8318SS	8319SS
GVWR (GROSS VEHICLE WEIGHT RATING)	7951	8381	8234	8475	8761	8848	8531	8597	8633	8477	8273	8400	8587	8714	8655
BASE/DRY UNIT WEIGHT	5545	6086	5887	6085	6360	6498	6153	6389	6273	6142	5872	6055	6270	6373	6310
BASE DRY HITCH WEIGHT	626	602	950	822	787	848	655	851	880	793	948	973	912	894	915
BASE DRY AXLE WEIGHT	4919	5484	4937	5263	5573	5650	5498	5538	5393	5349	4924	5082	5358	5479	5395
CARGO CAPACITY	1900	1900	1900	1900	1900	1829	1900	1900	1900	1900	1900	1900	1900	1900	1900
LENGTH	32' 2"	32' 2"	32' 2"	31' 6"	33' 3"	34' 1"	34' 1"	34' 8"	34' 1"	34' 1"	33'	34' 1"	33'	34' 1"	32' 2"
WIDTH	96"	96"	96"	96"	96"	96"	96"	96"	96"	96"	96"	96"	96"	96"	96"
HEIGHT W/O A/C	117"	117"	117"	117"	117"	117"	117"	117"	117"	117"	117"	117"	117"	117"	117"
INTERIOR HEIGHT	78"	78"	78"	78"	78"	78"	78"	78"	78"	78"	78"	78"	78"	78"	78"
FRESH WATER CAPACITY	43 gal	43 gal	43 gal	43 gal	43 gal	43 gal	43 gal	43 gal	43 gal	43 gal	43 gal	43 gal	43 gal	43 gal	43 gal
GRAY WATER CAPACITY	38 gal	38 gal	76 gal	76 gal	38 gal	70 gal	76 gal	38 gal	64 gal	38 gal	38 gal	38 gal	38 gal	76 gal	38 gal
BLACK WATER CAPACITY	38 gal	38 gal	38 gal	38 gal	38 gal	38 gal	38 gal	38 gal	38 gal	38 gal	38 gal	38 gal	38 gal	38 gal	38 gal

## Slide-Out Options



\*\* Slide options available on Signature/Windjammer super slides only

## Rockwood Signature Ultra Lite Series Fifth Wheel Floorplans



Slide option available on Signature/Windjammer super slides only

## Rockwood Signature Ultra Lite Series Fifth Wheel Specifications

Model number of any particular unit does not necessarily reflect the overall length of the unit itself. Dry weight are estimates.

MODEL	8244S	8260WS	8265S	8265WS	8281SS	8288SS	8280WS	8285WS	8286WS
GVWR (GROSS VEHICLE WEIGHT RATING)	8293	8873	8844	9015	9285	9403	9077	9187	9418
BASE/DRY UNIT WEIGHT	6010	6449	6517	6660	6929	7008	6810	6830	7330
BASE DRY HITCH WEIGHT	1028	1534	977	1121	1285	1443	1077	1187	1418
BASE DRY AXLE WEIGHT	4982	4915	5540	5539	5644	5565	5733	5643	5912
CARGO CAPACITY	1900	1900	1900	1900	1900	1900	1900	1900	1658
LENGTH	26' 7"	28' 10"	28' 4"	28' 10"	30' 4"	30' 6"	30' 4"	30' 4"	30' 6"
WIDTH	96"	96"	96"	96"	96"	96"	96"	96"	96"
HEIGHT W/O A/C	135"	135"	135"	135"	147"	147"	147"	147"	147"
FRESH WATER CAPACITY	43 gal	43 gal	43 gal	43 gal	43 gal	43 gal	43 gal	43 gal	43 gal
GRAY WATER CAPACITY	38 gal	76 gal	38 gal	38 gal	76 gal	76 gal	76 gal	76 gal	76 gal
BLACK WATER CAPACITY	38 gal	38 gal	38 gal	38 gal	38 gal	38 gal	38 gal	38 gal	38 gal



Signature



# Ultra Lite

MODEL 8260WS



*Rockwood redefines camping by having the necessities of residential living on the camp site. It's all in the details. Features like the residential Serta mattresses and metal drawer guides are simple amenities that add tremendously to the comfort of your vacation.*



ESPRESSO WITH TUSCAN CREAM

# Rockwood Fifth Wheel & Travel Trailer Standards & Options

Standards and options are subject to change

MODELS	UL	W	SUL
· Fully Laminated Aluminum Frame (Floor, Sidewall, & Roof)	S	S	S
· Insulation Factors R-7 Side Wall, R-12 Floor and R-14 Roof	S	S	S
· Radius Roof	S	S	S
· Easy Lube Axles	S	S	S
· Foot Flush Toilets	S	S	S
· Enclosed Tanks	S	S	S
· Aluminum Bed and Dinette Frames	S	S	S
· Laminated Fiberglass Sidewalls:			
· Lamilux 1500	S	--	--
· Lamilux 4000	--	CP	CP
· Screwed and Glued Cabinetry	S	S	S
· Solid Wood Doors and Drawers	S	S	S
· Vinyl Roof	S	S	S
· Large Grab Handles	CP	S	S
· Torsion Axle, Rubber-Ryde Suspension	S	S	S
· Electric Slide-Out	S	S	S
· Floor Ducted Furnace	S	S	S
· Raised Panel Doors and Drawers	S	S	S
· Digital AM/FM/CD/DVD w/ Remote	S	S	S
· Residential One-Piece Sink Cover/ Cutting Board	S	S	S

MODELS	UL	W	SUL
· Monitor Panel	S	S	S
· Designer Valances w/ Lambrequin Arms	S	S	S
· Mini Blinds	S	--	--
· Day/Night Shades	0	S	S
· Tub Surround	S	S	S
· Three Burner High Output Gas Range	S	S	S
· Six Gallon "Quick Recovery" Water Heater	S	S	S
· Water Heater By-Pass Kit	S	S	S
· Outside Shower	S	S	S
· Phone Jack	S	S	S
· Two 20 lb Gas Bottles	S	--	--
· Two 30 lb Gas Bottles	--	S	S
· Molded Bottle Cover	S	S	S
· Bathroom Skylight	S	S	S
· 55 Amp Converter With Charger	S	S	S
· Auto Gas/Electric Refrigerator	S	S	S
· Stabilizer Jacks	S	S	S
· Power Stabilizer Jacks	0	0	0
· Residential Metal Drawer Guides with Full Extension Drawer Guides in Kitchen	S	S	S
· Directional Reading Lights on Sofa Slides	S	S	S
· 14" Tires With Double Step	S	--	--
· 15" Tires With Triple Step	--	S	S

MODELS	UL	W	SUL
· TV Antenna w/ Cable & Satellite Hook-Up	S	S	S
· LCD TV and DVD With 5.1 Digital Dolby Surround Sound (N/A 2304S)	0	S	S
· Create-a-Breeze Three Speed Fantastic Vent	SO	SO	SO
· Extra Create-a-Breeze fan	0	0	0
· Heated Mattress	SO	--	--
· Water-Pur Filtration System	SO	SO	SO
· 13,500 BTU Ducted Roof Air	CP	CP	CP
· 15,000 BTU Ducted Roof Air	0	0	0
· Microwave	CP	CP	CP
· Gas Oven With Piezo Ignition	CP	S	S
· Power Awning With Adjustable Rain Dump	CP	CP	CP
· Outside Gas Grill and Worktable	0	0	0
· 110 DSI Gas/Electric Water Heater	CP	S	S
· Raised Refrigerator Panels	0	0	0
· Tuscan Cream Raised Refer Fronts	0	0	0
· Electronically Controlled Heated Holding Tanks	0	S	S
· Spare Tire Carrier & Cover	CP	CP	CP
· Theater Surround Sound ( n/a on 23FBS)	0	S	S
· Aluminum Wheels	0	CP	CP
· Optional Stainless Steel Appliances	0	0	0
· 1/2 Sliding Storage Tray (N/A 2501 SS)	0	--	--
· CSA	0	0	0

UL = ULTRA LITE, W = WINDJAMMER, SUL = SIGNATURE ULTRA LITE

S = STANDARD

0 = OPTIONAL

CP = CONVENIENCE PACKAGE

SO = STANDARD OPTION

-- NOT AVAILABLE



MODELS	UL	W	SUL
· Outside Speakers	CP	CP	CP
· Awning Slide Topper	0	0	0
· Rear Ladder	0	0	0
· Tinted Safety Glass	CP	CP	CP
· LCD BEDROOM TV	--	0	0
· Chrome-Look Wheel Covers	0	--	--
· Power Front Jack (Std on 5th wheels)	0	0	0
· Tire Pressure Monitoring System	0	0	0
· Carbon Monoxide Detector forced	SO	SO	SO
· Minimum Carpet available	0	0	0
· Storm Windows available	0	0	0
· Decorative Frame Skirting	S	S	S
· Air Hide-a-bed w/ Storage (N/A 28WFK)	--	0	0
· 22" LCD TV in Bedroom (Std. on all center entertainment center floorplans)	--	0	0
· Tuscan Cream, Oak and Chery Interior	0	0	0
· Stainless Steel Appliances With Oak or Cherry Interior	0	0	0
· New Flush Mount Stone Cast Sinks	--	S	S
· Trash Can in Kitchen (Most Models)	--	S	S
· Interior Floor Light by Entrance Door	--	S	S
· MP3 Player Hook-Up	S	S	S
· Solid Wood Raised Panel Doors and Drawers	S	S	S

MODELS	UL	W	SUL
· Bathroom Skylight	S	S	S
· Black Water Flush	S	S	S
· Gas/Electric Hot Water Heater With DSI	CP	S	S
· Swivel Chair (Where Available)	S	S	S
· 30" Entrance Door (Most Models)	--	S	S
· Lighted Entry Step	--	S	S
· Free Standing Table and Chairs	0	0	0
· Ceiling Fans (Fifth Wheels)	--	--	0
· Atrium Slide Windows ( Super Slides)	--	0	0
· Counter Top Extension (N/A 8296SS, 8296SS AND 8315BSS)	0	0	0
· Lazy Boy Leather Recliner Option: Available			
· ILO All Units With Barrel Chairs (N/A 8319SS)	--	--	0
· Residential Serta Mattress	--	CP	CP



UL = ULTRA LITE, W = WINDJAMMER, SUL = SIGNATURE ULTRA LITE

S = STANDARD  
 0 = OPTIONAL  
 CP = CONVENIENCE PACKAGE

SO = STANDARD OPTION  
 -- NOT AVAILABLE

FIFTH WHEELS  
TRAVEL TRAILERS

ROCKWOOD

## FOREST RIVER'S HALLMARK OF EXCELLENCE PRE-DELIVERY INSPECTION FACILITIES



### THAT'S 20,000 SQUARE FEET OF QUALITY ASSURANCE. THE BARE ESSENTIALS FOR A PREMIUM PRODUCT.

Brought online in 2005, Forest River is proud of its state-of-the-art test facility. This beautiful building blends many of the old tried and true methods of testing our diverse types of RVs with new innovative ways of solving quality issues. Being centrally located to most Forest River manufacturing facilities, this 20,000 square foot

PDI (Pre-delivery Inspection) test building gives immediate daily feedback to individual managers. This assures the production facilities that nothing has slipped by the plant's quality assurance personnel and the units are "green" and ready to ship.

FOREST RIVER ENCOURAGES YOU TO  
**BUY  
LOCALLY**  
FROM YOUR HOMETOWN DEALERSHIP.

Forest River, Inc. strongly encourages our retail customers to purchase from their local dealership whenever possible due to the following factors:

1) Our Dealers are as a rule, independently owned and operated businesses. Outside of those customers they personally sold products to, they are not contractually obligated to perform warranty service on Forest River products that were purchased elsewhere. There may be an occasion that you would be required to return to the point of purchase to satisfy warranty requirements.

2) Although many dealerships will eventually service products not purchased at their place of business, they will usually take care of their customers and other Forest River customers who are traveling away from their local dealer as they would their own.

3) Local purchases allow a customer to establish a relationship with a dealer close to home. This relationship provides the customer with a convenient location for service and support from a "home town" professional.

4) The opportunity for a thorough PDI (Pre Delivery Inspection) and product orientation is an additional benefit of buying from your local dealer. Further providing the opportunity for refresher courses or the ability to get questions answered much more conveniently.

5) For our Canadian customers, there are also requirements which must be met to bring an RV purchased out of the country to their home. Although not insurmountable, these requirements may involve such things as additional inspections and certifications, taxes and fees. Your local Canadian Dealer is a professional at meeting these requirements.

6) Forest River's goal is for all RV Owners to fully enjoy their RV experience. In light of this goal, and considering the advantages of buying local, we encourage you to be thorough when determining what product to purchase and which dealer to purchase it from as both are key to your ultimate satisfaction and the realization of your dreams.

For details on Rockwood's complete warranty program, see your Rockwood dealer. When it comes to backing products with the same quality and commitment it has when it begins the manufacturing process, the only name you have to remember when you're looking for a recreational vehicle is Rockwood. Rockwood offers the following additional limited warranties to the original purchasers. Consult written warranty for details.

1. Twelve-year vinyl roof warranty,
2. Two-year fiberglass warranty,
3. Five-year axle warranty,
4. One-year bumper to bumper,
5. Available second-year warranty.



### PEACE OF MIND.

Forest River has yet another exclusive feature to offer: One year of free roadside assistance will be given to every 2010 Rockwood customer. This is just one more way to say "Thank you" and to ensure an enjoyable traveling experience.



**FOREST RIVER, INC.** 55470 C.R. 1 Elkhart, IN 46515  
574.389.4600 [www.forestriverinc.com](http://www.forestriverinc.com) [www.forestriveraccessories.com](http://www.forestriveraccessories.com)  
LITHO U.S.A FOR 0731

**YOUR ROCKWOOD DEALER**

All specifications contained herein are based on the latest product information at time of printing. Forest River reserves the right to make changes in colors, materials, equipment and specifications at any time without notice and assumes no responsibility for any errors in this brochure.