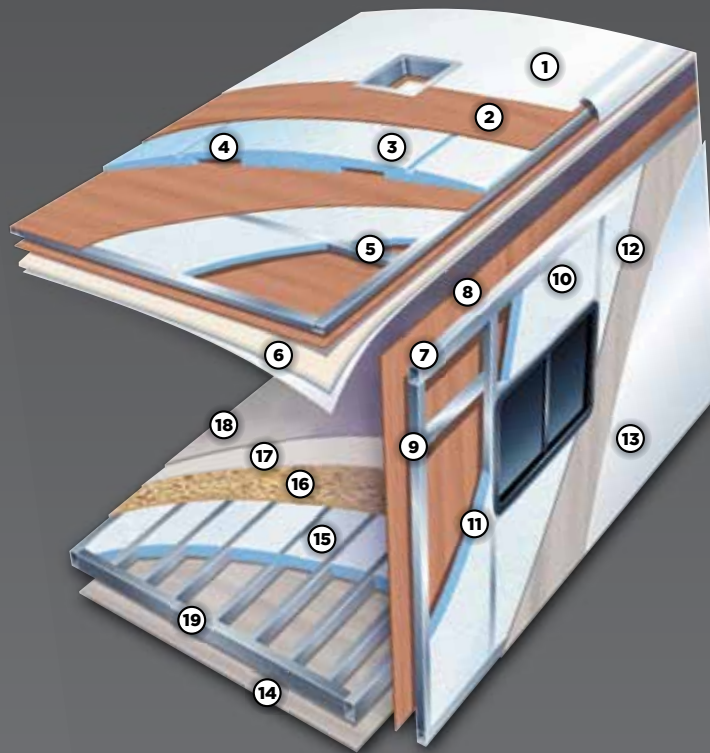


Forest River Presents

Sunseeker





Sunseeker Construction

MULTI-LAYERED LAMINATED ROOF SYSTEM

1. Crowned Fiberglass Roof
2. Luan decking
3. Block Foam Insulation
4. Dual A/C Ducts
5. 1.5" Tubular Aluminum Framing
6. Interior Ceiling Material

2-INCH VACUUM-BOND LAMINATED SIDEWALLS

7. 1.5" Tubular Aluminum Framing
8. Decorative Interior wall Board
9. EGS Metal Backers
10. Block Foam Insulation
11. Openings framed in Aluminum
12. SuperLite Composite
13. Smooth gelcoat fiberglass exterior

VACUUM-BOND LAMINATED FLOOR SYSTEM

14. Fiberglass Bottom Board
15. Block Foam Insulation
16. Seamless Floor Decking
17. Beauflor Flooring (In some areas)
18. Carpet with Pad (In some areas)
19. 1.5" Aluminum Framing



OPTIONAL SERTA MATTRESS. Serta is the #1 Supplier to the hotel industry, just one night in a Sunseeker and you'll see why.



OVERHEAD BUNK. The Sunseeker's overhead bunk provides a handy place for all your personal belongs at bedtime. It provides two storage compartments, drink holders and a outlet to make sure you're recharged in the morning.



3100SS IN TIKI AUTUMN WITH OPTIONAL RAISED MAPLE CABINETRY

Sunseeker Features



AZDEL SUBSTRATE. All Sunseekers use SuperLite composite instead of a wood substrate. It is lightweight, formaldehyde free and is not affected by moisture.

BACK-UP CAMERA. Our optional integrated backup camera/rear-view mirror with a large screen offers the ultimate convenience in both maneuvering your coach and keeping an eye on things behind you.





Sunseeker Features

A. DRAWER GUIDES. Our full extension ball bearing drawer guides provide smooth, reliable operation as well as full access to the drawers contents.

B. BUBBLE TESTING. Every Sunseeker is pressurized and soap tested at every seam and opening to ensure a water tight seal.

C. PDI BUILDING. Forest River has a 20,000 sq. ft. PDI facility demonstrating our commitment to quality. We double check the electrical system, plumbing system and re-inspect your RV inside and out. Our rain booth has 184 spray heads that produces the equivalent of 24 inches of rain per hour!

D. SUPER STORAGE. With our innovative split level design we maximize your exterior storage and give you pass through compartments when others can't. And of course it is all lined with seamless, rust free rotocast.

E. CONVENIENCE. The Sunseeker features a heated and enclosed utility station. Your tanks and valves are protected from mud, ice and other road debris.

The 3170DS floorplan offers our exclusive "Kid's Zone". The bottom bunk doubles as a sofa making it the perfect area for kids to hang out. Featuring a 19" 12 volt TV, DVD player, and hook-ups for gaming systems, your kids will have no trouble staying busy on those rainy afternoons.

Sunseeker



**KIDS
ZONE**



D



E

Sunseeker Floorplans, Specifications and Fabrics

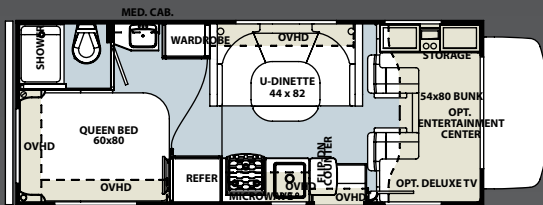


Latté Full Body Paint

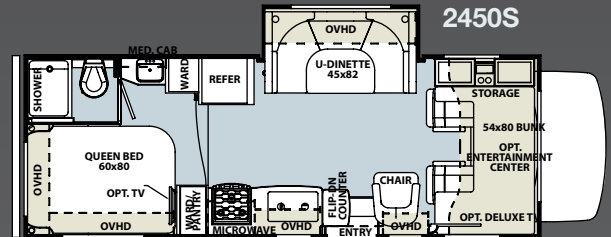


Platinum Full Body Paint

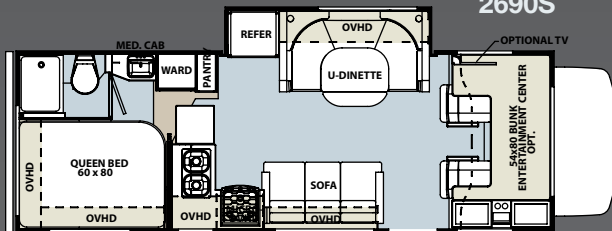
2300



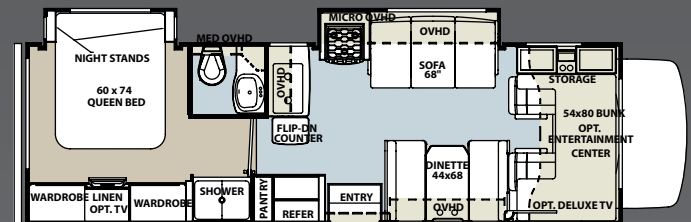
2450S



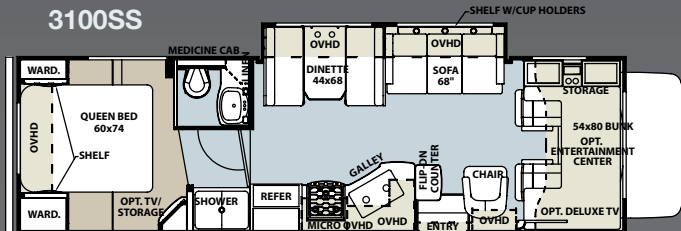
2690S



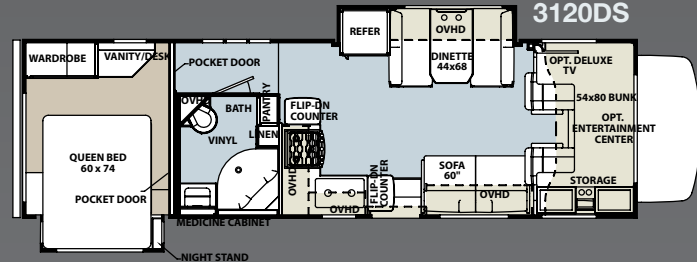
2860DS



3100SS



3120DS



Ford Chassis

	2300	2450S	2650S	2690S	2860DS	2900	3100SS	3120DS	3170DS	2300	2450S
WHEELBASE	158"	166"	188"	202"	202"	188"	220"	212"	220"	159"	167"
GVWR	14500	14500	14500	14500	14500	14500	14500	14500	14500	12300	12300
GAWRR	9500	9500	9500	9500	9500	9500	9500	9500	9500	8600	8600
GAWRF	5000	5000	5000	5000	5000	5000	5000	5000	5000	4300	4300
UVW	10170	11010	11390	11674	12412	11600	12100	12700	12700	9910	10700
GCWR	20000	20000	20000	20000	20000	20000	20000	20000	20000	16000	16000
NCC	4330	3380	3130	2826	1930	3150	2330	1910	1800	2390	1600
FUEL CAP.(GAL)	55	55	55	55	55	55	55	55	55	57	57
HITCH RATING	5k/500	5k/500	5k/500	8k/500	5k/500	5k/500	5k/500	5k/500	5k/500	3.5k/350	3.5k/350
TOTAL LENGTH	24'-4"	26'-5"	28'-1"	27'-11"	30'-10"	30'-2"	31'-11"	31'-11"	32'-3"	24'-8"	26'-10"

Chevy Chassis

Sunseeker Standards & Options

WARRANTY: STANDARD FEATURES

- 12 Months/ 12,000 miles basic limited warranty
- Bumper-to-Bumper 3 years / 36,000 mile limited chassis warranty(Ford)
- 5 years/ 60,000 mile limited powertrain warranty (Ford)
- 3 years/36,000 mile limited warranty (Chevy)
- 5 years/100,000 limited powertrain warranty (Chevy)

SYSTEMS: STANDARD FEATURES

- Battery disconnect
- Water heater bypass kit
- Deep cycle coach battery
- 30 amp, 12 volt distribution panel & 30' power cord
- 55 amp, 12 volt power converter
- Six gallon gas/electric electronic ignition DSI water heater
- 30,000 BTU electronic ignition furnace
- Remote emergency start
- Cable/TV and phone jacks
- 13.5 K BTU ducted roof air conditioner
- 40G Guardian generator
- Generator auto transfer switch
- One year CoachNet service

OPTIONAL FEATURES

- Arctic package
- 4.0 KW Onan Microquiet generator
- Water filtration system
- 2nd auxiliary deep cycle coach battery
- 15K BTU air conditioner with heat pump

EXTERIOR: STANDARD FEATURES

- 2" laminated Gel Coat sidewalls, vacuum bonded with aluminum frame structure, steel backers & block foam insulation
- A & E electric awning
- A & E slide out awnings
- Fiberglass roof
- Stainless steel wheel liners
- Lockable Rotocast pass-through storage compartments
- Patio Light
- Entry door with screen door & dead bolt door lock
- Aluminum running boards
- All radius style exterior doors
- Entry assist handle
- Heated and enclosed holding tanks

- Heated and enclosed "Easy-Dump" valve dump stations
- 110 volt, GFI protected exterior receptacle
- Tinted sliding windows
- Deluxe break-away mirrors
- 5,000 lb. tow hitch with 7-pin connector (Ford)
- 3,500 lb. tow hitch with 7-pin connector (Chevy)
- Spare Tire
- Roof Ladder
- Integrated entry step
- "Easy-Access" battery compartment in entry step
- Exterior security light

OPTIONAL FEATURES

- Outside Shower
- Bigfoot hydraulic automatic leveling jacks
- Fiberglass front cap
- Full body paint
- Front Cab Bunk Window (N/A w/ Fiberglass Cap)

CAB AREA: STANDARD FEATURES

- AM/FM/CD player with USB, Aux hookups and weatherband
- Upgraded driver and passenger seats
- Cab area privacy curtains
- Dual 12 volt power points
- Cruise control
- Power windows and door locks
- Keyless entry

OPTIONAL FEATURES

- Color back-up camera with monitor
- Power driver seat

GALLEY AREA: STANDARD FEATURES

- High-neck faucet
- Three burner range with oven
- 6 cubic foot refrigerator/freezer
- Range hood with fan and light
- Residential-style drawer construction with solid wood fronts and ball-bearing drawer guides
- Microwave oven(N/A 3120DS)
- Flip-up countertop extension
- Sink cover

OPTIONAL FEATURES

- Wood refrigerator panels
- Convection microwave IPO oven (std 3120DS)

BATHROOM AREA: STANDARD FEATURES

- Large medicine cabinet with mirrored cabinet doors
- Deep sink with dual control faucet
- Porcelain toilet
- Frosted glass shower door
- Bath amenity package (towel bar, tissue, toothbrush & soap holder)
- Electric roof vent fan
- Wall mount mirror
- Molded ABS shower pan & surround
- Shower head with flexible hose extension
- Shower skylight
- Light switch

BEDROOM AREA: STANDARD FEATURES

- Innerspring mattress
- Bedspread with pillow shams
- TV area with receptacle & cable TV jack
- Adjustable reading lights
- Night shades with upscale window treatments
- Bi-fold privacy door
- Light switch
- Rear bedroom window

OPTIONAL FEATURES

- Twin beds with innerspring mattresses (Available IPO north-south non-slide queen bed)
- Bunk beds with innerspring mattresses (Available IPO north-south non-slide queen bed)
- Upgraded Serta pillowtop mattress
- 19" Flat panel 12 volt TV

LIVING ROOM AREA: STANDARD FEATURES

- Shaker cherry cabinetry throughout
- Rubbed bronze handles
- Dream dinette
- 2-way sofa with convertible sleeping treatments
- Night shades with deluxe window treatments
- 7 foot ceiling height
- Convenience center
- Light switches

OPTIONAL FEATURES

- Cab over entertainment center with 32" TV
- 22" flat panel TV w/ DVD
- 450 watt inverter
- Cab over bunk window (N/A with fiberglass front cap)
- Fantastic Fan
- Raised Cherry Cabinetry
- Raised Maple Cabinetry

FOREST RIVER ENCOURAGES YOU TO

**BUY
LOCALLY**
FROM YOUR HOMETOWN DEALERSHIP.

Forest River, Inc. strongly encourages our retail customers to purchase from their local dealership whenever possible due to the following factors:

Our Dealers are as a rule, independently owned and operated businesses. Outside of those customers they personally sold products to, they are not contractually obligated to perform warranty service on Forest River products that were purchased elsewhere. There may be an occasion that you would be required to return to the point of purchase to satisfy warranty requirements. Although many dealerships will eventually service products not purchased at their place of business, they will usually take care of their customers and other Forest River customers who are traveling away from their local dealer as they would their own.

Local purchases allow a customer to establish a relationship with a dealer close to home. This relationship provides the customer with a convenient location for service and support from a "home town" professional. The opportunity for a thorough PDI (Pre Delivery Inspection) and product orientation is an additional benefit of buying from your local dealer. Further providing the opportunity for refresher courses or the ability to get questions answered much more conveniently.

For our Canadian customers, there are also requirements which must be met to bring an RV purchased out of the country to their home. Although not insurmountable, these requirements may involve such things as additional inspections and certifications, taxes and fees. Your local Canadian Dealer is a professional at meeting these requirements.

Forest River's goal is for all RV Owners to fully enjoy their RV experience. In light of this goal, and considering the advantages of buying local, we encourage you to be thorough when determining what product to purchase and which dealer to purchase it from as both are key to your ultimate satisfaction and the realization of your dreams.

Your Sunseeker Dealer



Forest River, Inc. 914 C.R. 1 Elkhart, IN 46514
574.262.2212 800.445.2825 www.forestriverinc.com
www.forestriveraccessories.com

All specifications contained herein are based on the latest product information at time of printing. Forest River reserves the right to make changes in colors, materials, equipment and specifications at any time without notice and assumes no responsibility for any errors in this brochure. LITHO: U.S.A. FOR 0742