

PUMA FAMILY

WELCOMES YOU TO THE GREAT OUTDOORS

PUMA
by Palomino



PUMA Travel Trailers, Fifth Wheels, Park Trailers & Toy Haulers

TRAVEL TRAILERS, FIFTH WHEELS, PARK TRAILERS & TOY HAULERS

FUN & CAREFREE

When you're on the prowl for adventure, nothing is better suited than a Puma. These powerfully-built, easily towed travel trailers make the adventure fun and carefree. Puma offers 29 floor plan choices including a variety of kids' bunk room models. Satellite TV hook-up is standard on all models to keep everyone entertained.



31-KBHSS SHOWN IN SAGE DECOR



31KBHSS SHOWN IN SAGE DECOR ◆



DECOR OPTIONS

Available on all models

Main fabrics are dominant colors and coordinating fabrics are the attendant colors.



INTERIOR FEATURES

Available on most models



▲ OPTIONAL COMFORT AIR BED

▲ DINETTE OPTION

New OUTSIDE FEATURES!

Outside Kitchen



▲ SIDE PAW KITCHEN

This premiere outside accessible kitchen is yet another innovation from Team Puma. Every convenience of your inside kitchen is offered for outside family fun. Additionally, the outside entertainment center provides true and complete "tailgating" with all the conveniences of home.



OUTSIDE ENTERTAINMENT ▶

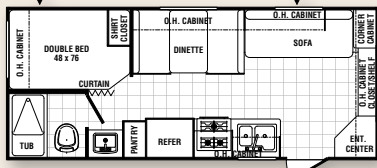
MODELS	18-DB	19-FS	19-RL	20-QB	23-FB	25-BH	25-RS	27-FQ
Hitch Dry Weight (lbs.)	527	560	446	663	673	660	600	530
Dry Axle Weight (lbs.)	3784	3710	3802	3476	3985	4090	4430	4820
Total Dry Weight (lbs.)	4311	4270	4248	4239	4658	4750	5030	5350
Carrying Capacity (lbs.)	2744	2827	2735	3052	2552	2447	2107	1717
GVWR (lbs.)	7527	7560	7446	7663	7673	7660	7600	7530
Tire Size	14"	14"	14"	14"	14"	14"	14"	15"
Interior Height	80"	80"	80"	80"	80"	80"	80"	80"
Exterior Height w/AC	10'5"	10'5"	10'5"	10'5"	10'5"	10'5"	10'5"	10'5"
Exterior Width	96"	96"	96"	96"	96"	96"	96"	96"
Overall Length	23'3"	23'3"	23'0"	23'3"	26'10"	27'1"	28'0"	30'7"
Fresh Water Capacity (gal.)	51	51	51	51	51	51	51	51
Grey Water Capacity (gal.)	42	42	42	42	42	42	42	42
Black Water Capacity (gal.)	42	42	42	32	42	32	42	42
Awning Size	14'	14'	12'	14'	18'	16'	20'	21'



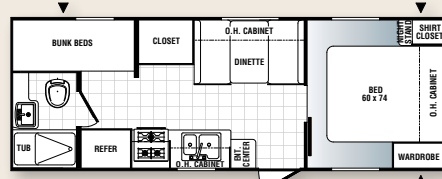
25-RDS SHOWN IN MERLOT DECOR

27-KFQ	28-DB	25-RBSS	25-RDS	25-RKSS	26-FBSS	26-RLSS	27-DSQ	28-BHS	29-FQS	30-DBSS	30-FQSS	30-KDBSS	30-KFBDS	30-RKSS	31-BHSS	31-DBSS	31-FKBS	31-KBHSS	31-RDSS	31-RLSS
556	639	615	470	509	705	700	952	640	720	800	800	742	1352	977	890	812	1020	874	TBD	1088
5563	4948	5542	4884	4796	5460	5470	5424	5260	6260	5870	5870	6317	6572	5977	6812	6900	7064	7000	TBD	6125
6119	6058	6157	5354	5305	6165	6170	6376	5900	6980	6670	6670	7059	7924	6954	7702	7712	8084	7874	TBD	7213
2327	1580	4146	1653	1732	2877	2867	4504	1277	2077	2467	2467	3392	3125	3733	3116	2788	2624	2697	TBD	3572
9086	7639	10,775	7470	7509	9505	9500	11,352	7640	9520	9600	9600	10,902	11,512	11,137	11,290	10,972	11,180	11,034	TBD	11,248
15"	15"	15"	15"	14"	15"	15"	15"	15"	15"	15"	15"	15"	15"	15"	15"	15"	15"	15"	15"	15"
80"	80"	80"	80"	80"	80"	80"	80"	80"	80"	80"	80"	80"	80"	80"	80"	80"	80"	80"	80"	80"
10'5"	10'5"	10'5"	10'5"	10'5"	11'1"	11'1"	10'5"	10'5"	11'1"	11'1"	11'1"	11'1"	11'1"	11'1"	11'1"	11'1"	11'1"	11'1"	11'1"	11'1"
96"	96"	96"	96"	96"	96"	96"	96"	96"	96"	96"	96"	96"	96"	96"	96"	96"	96"	96"	96"	96"
32'6"	31'2"	29'3"	28'7"	28'2"	29'9"	30'2"	29'8"	32'1"	32'8"	32'8"	32'8"	33'0"	34'9"	33'0"	35'4"	34'10"	35'9"	35'4"	TBD	34'6"
51	51	51	51	51	51	51	51	51	51	51	51	51	51	51	51	51	51	51	51	51
42	42	42	42	84	84	84	42	42	42	42	42	64	84	84	42	72	84	64	TBD	42
42	42	32	42	32	32	32	42	42	42	42	42	32	42	32	32	84	32	42	TBD	42
18'	20'	21'	20'	18'	16'	21'	16'	20'	20'	18'	18'	18'	21'	21'	21'	16'	21'	19'	TBD	19'

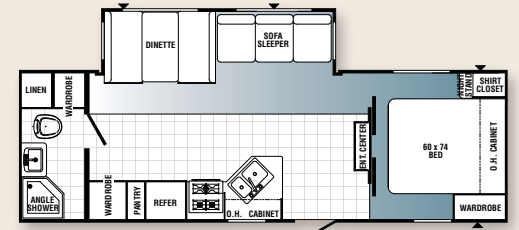
TRAVEL TRAILERS



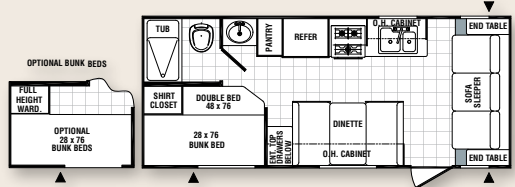
18-DB



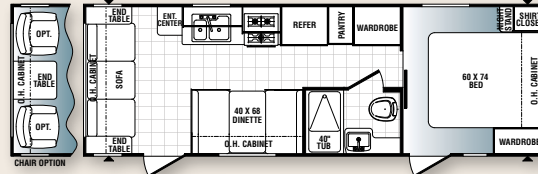
25-BH



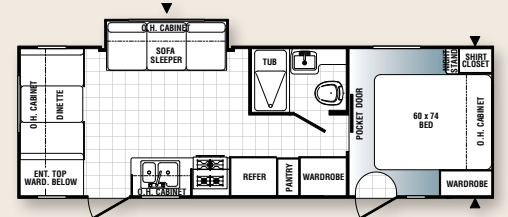
25-RBSS



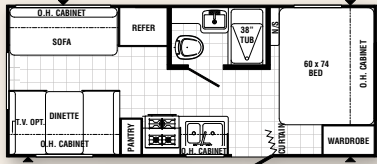
19-FS



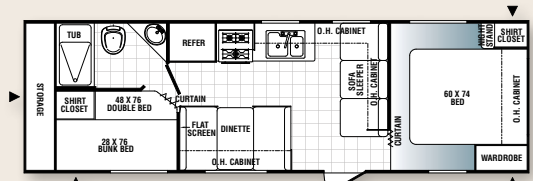
25-RS



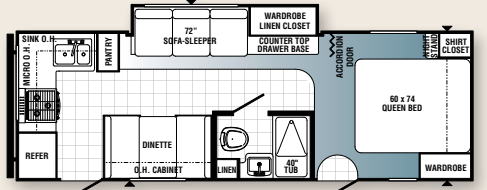
25-RDS



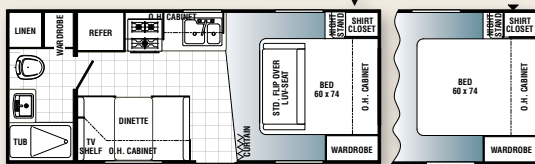
19-RL



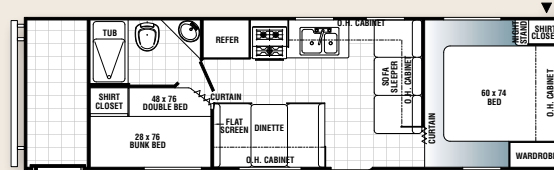
27-FQ



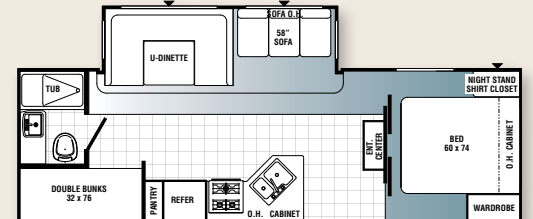
25-RKSS



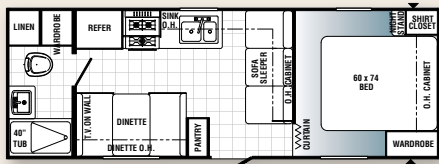
20-QB



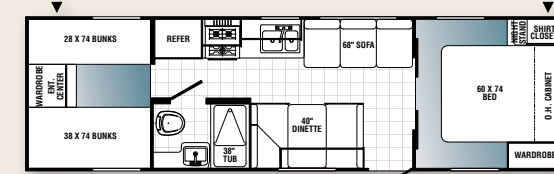
27-KFQ



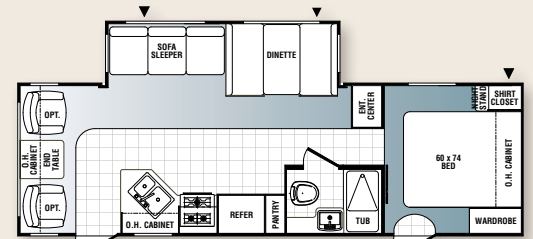
26-FBSS



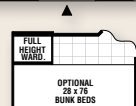
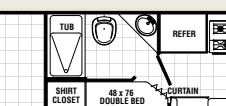
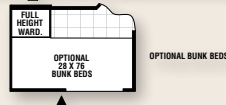
23-FB

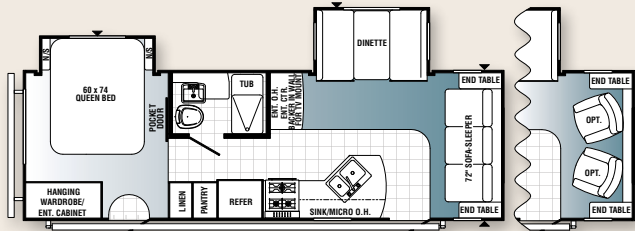


28-DB

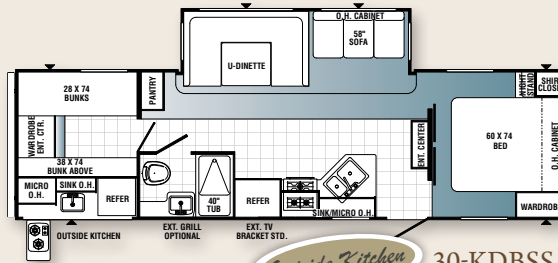


26-RLSS

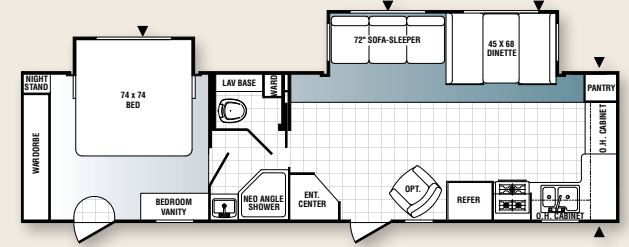




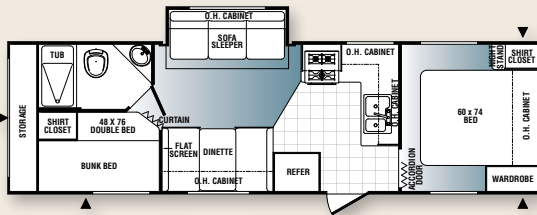
27-DSQ



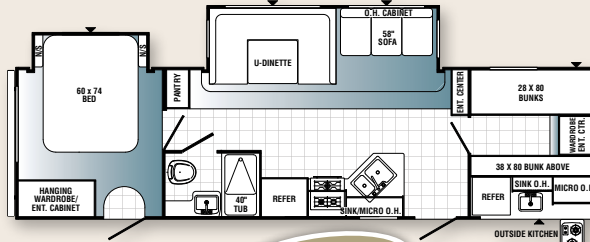
Outside Kitchen 30-KDBSS



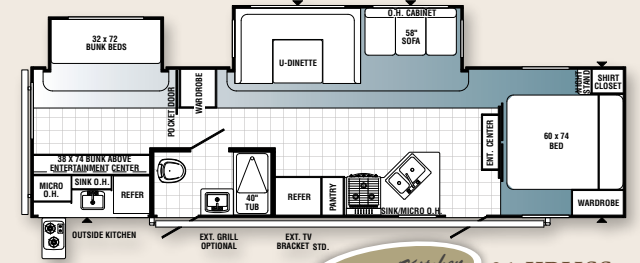
31-FKBS



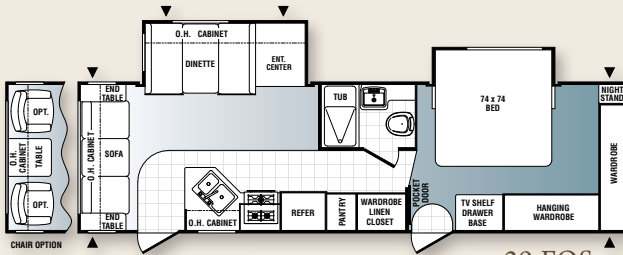
28-BHS



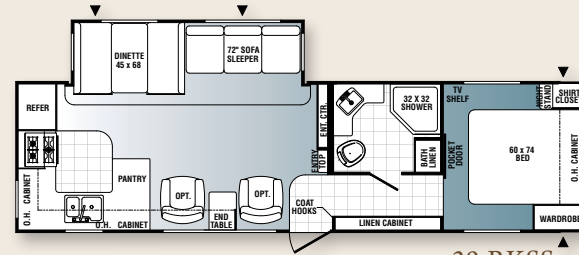
Outside Kitchen 30-KFBDS



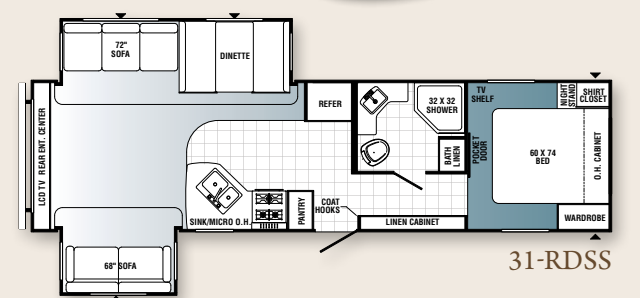
Outside Kitchen 31-KBHSS



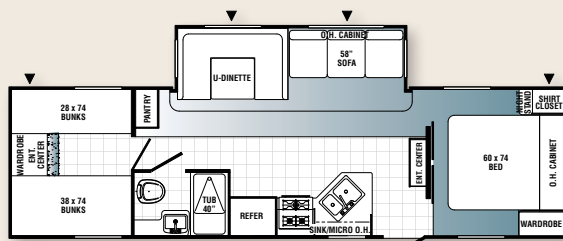
29-FQS



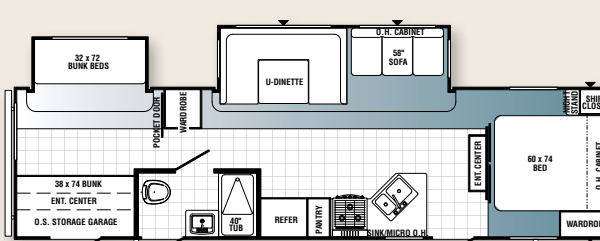
30-RKSS



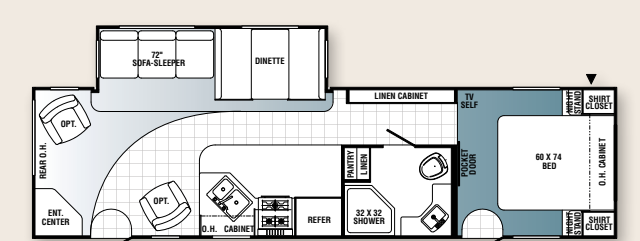
31-RDSS



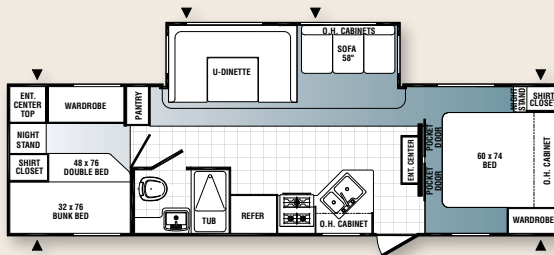
30-DBSS



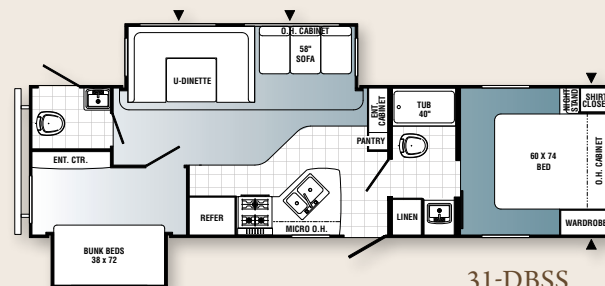
31-BHSS



31-RLSS



30-FQSS



31-DBSS

FIFTHWHEELS



ENJOYMENT

Puma offers seven fifth wheel floor plans. All models are equipped with a multitude of standard features, plus extra options can be added to tailor your Puma fifth wheel to your needs and lifestyle. Interiors feature residential style kitchens with designer linoleum flooring and optional home theater surround sound systems for your enjoyment.



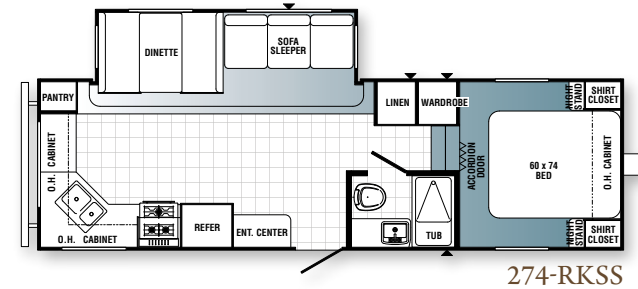
259 RBSS SHOWN IN MYSTIC BLUE DECOR WITH WOODGRAIN LINOLEUM OPTION



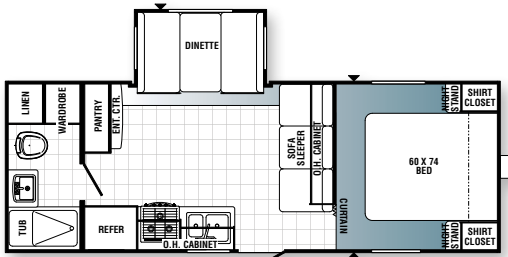
MODELS

	230-FBS	245-RKS	253-FBS	259-RBSS	274-RKSS	295-BHSS	295-KBHSS
Hitch Dry Weight (lbs.)	1107	1080	1200	1391	TBD	1073	1016
Dry Axle Weight (lbs.)	4663	4960	5460	5028	TBD	6706	7530
Total Dry Weight (lbs.)	5770	6040	6660	6419	TBD	7869	8546
Carrying Capacity (lbs.)	1874	1568	2877	4686	TBD	2892	2167
GVWR (lbs.)	8107	8080	10,000	11,551	TBD	11,233	11,176
Tire Size	15"	14"	15"	15"	15"	15"	15"
Interior Height	80"	80"	80"	80"	80"	80"	80"
Exterior Height w/AC	12'2"	12'4"	12'2"	12'4"	12'4"	12'4"	12'4"
Exterior Width	96"	96"	96"	96"	96"	96"	96"
Overall Length	24'5"	25'8"	27'0"	28'4"	28'6"	33'7"	29'8"
Fresh Water Capacity (gal.)	51	51	51	51	51	51	51
Grey Water Capacity (gal.)	42	84	84	84	TBD	42	64
Black Water Capacity (gal.)	42	32	32	32	TBD	32	42
Awning Size	14'	16'	16'	12'	TBD	18'	18'

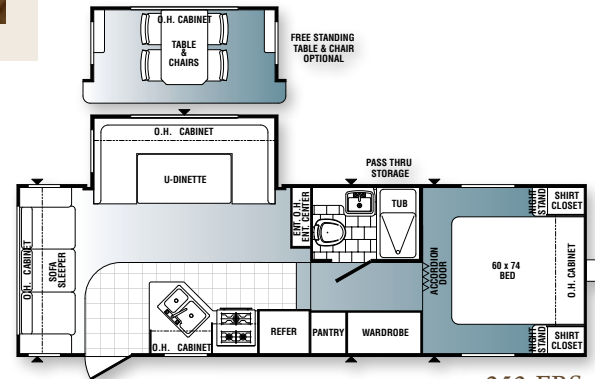
Fifth wheel weights include optional 13.5 BTU roof air, double door refer, oven and awning.



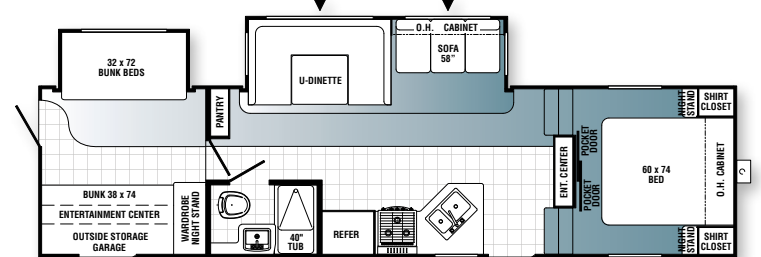
274-RKSS



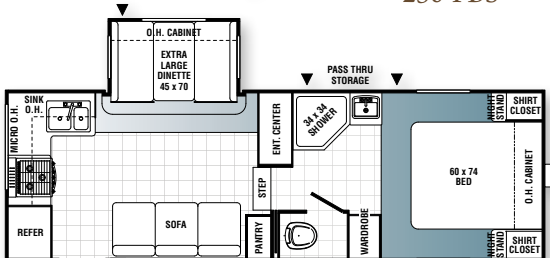
230-FBS



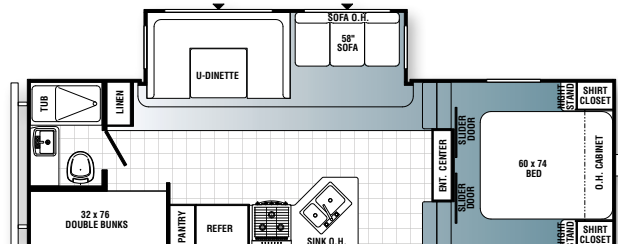
253-FBS



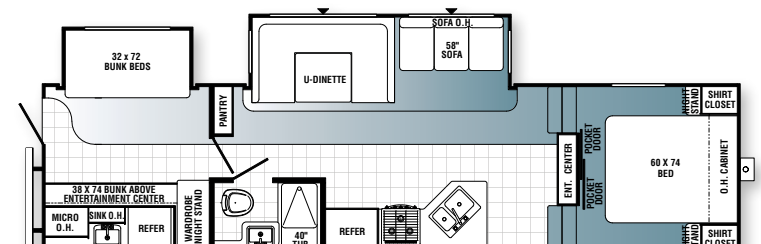
295-BHSS



245-RKS



259-RBSS



295-KBHSS



PARKTRAILERS



LEISURE

Enjoy your own vacation home with a Puma Park Trailer. They offer the best in leisure living with five spacious floor plans, two bedroom options, and a den option to accommodate your family's needs. Residential style furnishings and a large master bedroom with king size bed ensure your vacationing comfort.



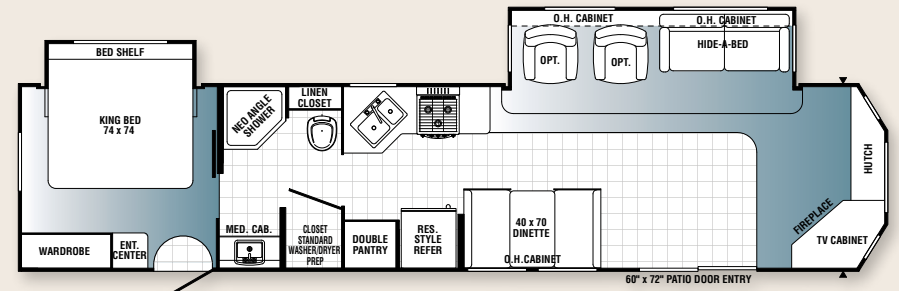
38-PFSKB SHOWN IN SAGE DECOR WITH WOODGRAIN LINOLEUM OPTION

MODELS

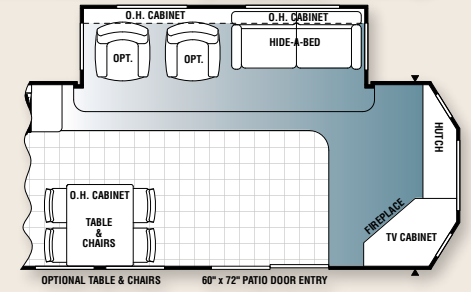
36-QBSS 38-PFSKB 39-PFLDS 39-PTBSS 39-PTDBSS

Hitch Dry Weight (lbs.)	1350	1245	1555	1225	1510
Dry Axle Weight (lbs.)	6434	7645	7508	7790	8188
Total Dry Weight (lbs.)	7814	8890	9063	9015	9698
Carrying Capacity (lbs.)	3254	1752	2180	2610	1872
GVWR (lbs.)	11,510	11,405	11,715	11,625	11,670
Tire Size	15"	15"	15"	15"	15"
Interior Height	80"	84"	84"	84"	84"
Exterior Height w/AC	11'1"	11'9"	11'9"	11'9"	11'9"
Exterior Width	96"	96"	96"	96"	96"
Overall Length	38'3"	41'9"	40'4"	40'2"	42'1"
Fresh Water Capacity (gal.)	42	51	51	51	51
Grey Water Capacity (gal.)	84	64	84	84	84
Black Water Capacity (gal.)	42	42	42	42	42
Awning Size	21'	21'	21'	21'	21'

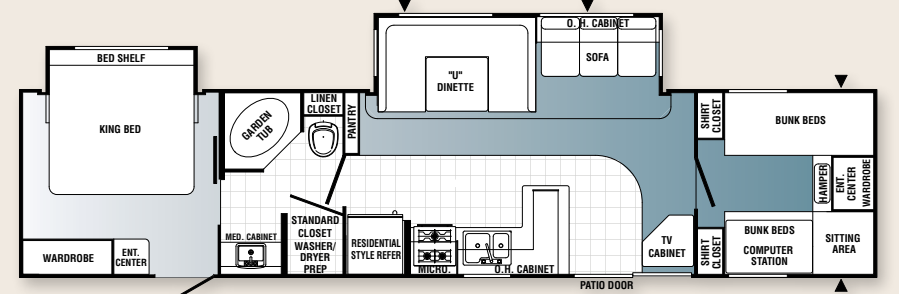
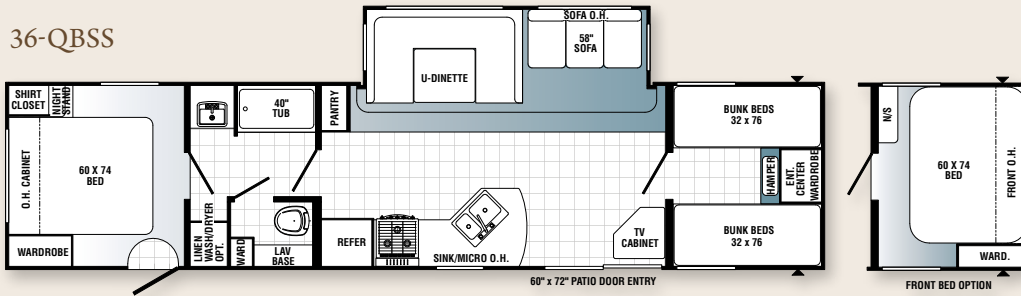
Park trailer weights include optional 13.5 BTU roof air, double door refer, oven and awning.



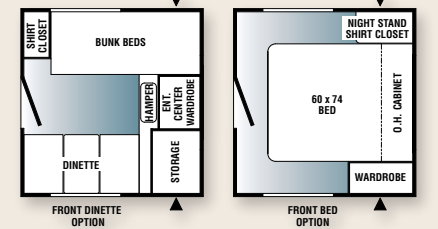
39-PFLDS



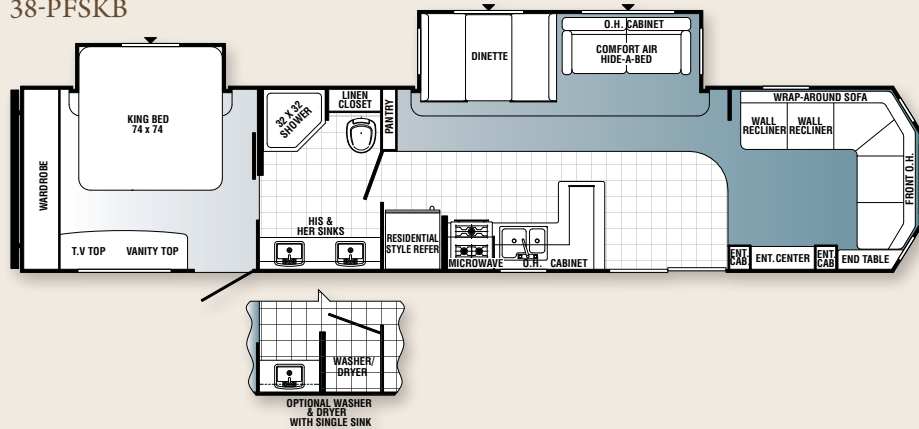
36-QBSS



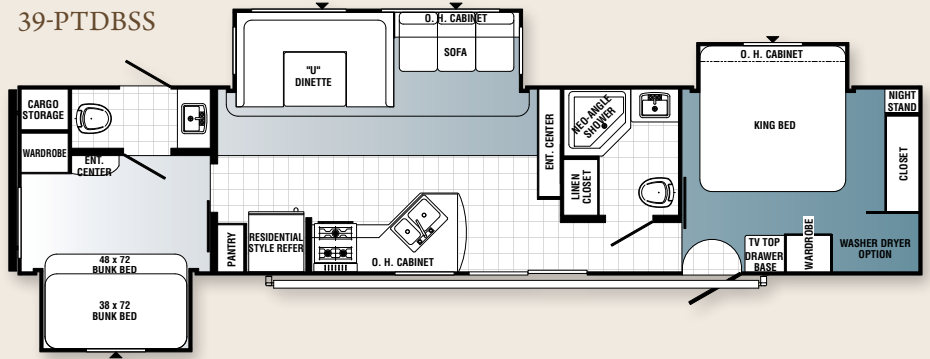
39-PTBSS



38-PFSKB



39-PTDBSS



EXTERIOR

- Radius Entry Doors
- Powder Coated Frames
- EZ Lube Axles
- Tinted Safety Glass
- Clamp Ring Windows
- Double Entry Doors (Where Applicable)
- Pass-Thru Storage (Where Applicable)
- Rubber Roof- 12 Year Manufacturer's Warranty
- 9" Three-Tier Steps
- Rain Gutters
- Automotive Style Fender Skirts
- Radius Trunk Doors
- Wrapped Darco Underbelly
- One Piece, 24' Sheet, 5/8" Floor Decking (25 Year Manufacturer's Limited Warranty by Affiliated Resources, Inc.)
- 2 x 3 Flush Joists on 12" Centers
- Lighted Pass-Thru Exterior Compartments (Where Applicable)
- 2-20 lb. Gas Bottles
- 6 Gal. DSI Hot Water Heater
- Rack and Pinion Electric Slide System with Manual Override (Standard on all Slide-Out Models)
- Heavy Duty Storage Door for the Puma Den Option
- Rear Garage Storage Compartment (Standard on the 27-FQ and 28-BHS)
- Clamp Ring Luggage Doors

INTERIOR

- 80" Interior Height
- Insulated Duct A/C (All Models)
- Floor Ducted Heat
- 30,000 BTU Furnace
- Flush Floor Slide-Outs
- 16" Deep Overhead Cabinets in Super-Slide Models
- Real Wood Drawers
- Kitchen Ball Bearing Drawer Guides
- Plant Built Wood Medicine Cabinet with Mirrored Door
- 60/40 Deep Double Bowl Kitchen Sink
- High Rise Kitchen Faucet
- Arch Top Mortise and Tenon Cabinet Doors with Glaze Insert
- Suburban 3-Burner, High Output Range
- Knife Rack
- Upgrade Window Treatment

- 55 Amp Converter with Battery Charger
- Flip Down Utensil Tray (Kitchen)
- Divided Silverware Drawer (All Models)
- Innerspring Mattress
- Bedroom Carpet
- 1 Sink Cover
- Single Door Refrigerator
- Power Vent in Bath
- 12V Shower Light
- 4 Interior Colors
- Coat Hooks in Entry Way
- Quilted Bunk Mats
- Oil Rub Bronze Hardware, Light and Bath Fixtures
- Cabinet Doors under Dinette Seats
- Upgraded Carpet (21 oz.)
- Upgraded Residential Beauflor® Linoleum
- Full Length Wardrobe and Shirt Closet in Front Bedrooms (Travel Trailer Only)
- Surround Sound and 22" LCD TV (Standard in 31-BHSS and 29S-BHSS)
- Lambrequin Window Treatments (Living Room only)

STD. SAFETY FEATURES

- CO2 Detector
- LP Leak Detector
- Fire Extinguisher
- Smoke Detector

TRAVEL TRAILER OPTIONS

- Water Purifier
- Sink Cover
- Range Cover
- Galley Extension
- Double Door Refrigerator
- 6 Gal. Gas/Electric DSI Hot Water Heater
- Water Heater By-Pass (Forced Option)
- 21" Oven
- Microwave
- Create-a-Breeze™ Fan (Exchange)
- AM/FM CD/DVD Stereo
- TV Antenna with Booster and Cable Hook-Up
- Bedroom TV Hook-Up (NA 19-FS)
- Extra Roof Vent
- 13,500 BTU Ducted A/C
- 15,000 BTU Ducted A/C
- Bedspread
- Outside Grill
- Tub Surround

- Mini Blinds
- Day/Night Shades
- Wall Border
- Front Window with Rock Guard
- Awning
- Electric Awning
- 2 Stabilizer Jacks
- 4 Stabilizer Jacks
- Outside Shower
- Diamond Plate
- 30 lb. Gas Bottles and Cover
- Radial Tires
- Spare Tire and Carrier
- AM/FM CD/DVD Home Theater Surround Sound System
- Double Bedspread
- PUMA Den*
- Swivel Rocker*
- Bath Skylights
- Free Standing Dinette*
- Overhead Cabinets in Slide Room*
- Hide-A-Bed Sofa*
- Glass Shower Door*
- Roof Ladder
- Heated Tanks
- Stacked Bunk Option (19-FS and 27-FQ Only)
- Comfort Air Beds

PUMA PREMIER PACKAGE

*Available on Select Models

PARK TRAILER STANDARDS

- 6 Gal. Gas/Electric DSI Hot Water Heater
- Upgrade Mattress
- Home Theater DVD Surround Sound AM/FM/CD Player
- FS Range
- Phone Jacks
- Patio Door
- Tinted Safety Glass
- Residential Refrigerator
- Solid Oak Raised Panel Cabinet Doors (Throughout)
- Lambrequin Window Treatments
- 6 Panel Interior Passage Doors
- Bedroom Roof Vent
- 35,000 BTU Furnace

PARK TRAILER OPTIONS

- Water Purifier
- Sink Cover
- 12 Gal. Gas/Electric Water Heater

- Water Heater By-Pass
- Range Cover
- Oven
- Microwave
- 26" LCD TV
- Double Door RV Refrigerator IPO House Type
- 50 Amp Service
- Washer/Dryer Prep with 50 Amp Service
- Stackable Washer/Dryer Includes Prep
- Convection Microwave/Cook Top
- Create-A-Breeze™ Fan (Exchange) Fantastic Vent Fan
- 12 V. Ceiling Fan in Living Room
- 12 V. Ceiling Fan in Bedroom
- TV Antenna with Booster and Cable Hook-Up
- Bedroom TV Hook-Up
- 13,500 BTU Ducted Air Conditioning
- 15,000 BTU Ducted Air Conditioning
- King Bedspread
- Outside Grill
- Outside Shower
- 30" Entry Door IPO of Sliding Patio Door
- Tub Surround
- Bath Skylight
- Glass Shower Door
- Mini Blinds
- Day/Night Shades
- Freestanding Dinette
- Overhead Cabinets in Slide Room (Std. Above Sofa)
- Wall Border
- Woodgrain Linoleum
- Bar Stools (2 per Floorplan)
- Swivel Rocker
- 2 Exterior Speakers
- Hide-a-Bed
- Comfort Air Bed
- 21' Awning
- Electric Awning
- 2 Stabilizer Jacks
- 4 Stabilizer Jacks
- Roof Ladder
- Diamond Plate
- 30 Lb. Gas Bottles and Cover
- Heated Tanks
- Spare Tire and Carrier
- Radial Tires
- Folding Grab Handle
- Carbon Monoxide Detector
- Fireplace (Available Certain Models)
- Z240

FIFTH WHEEL OPT.

- Water Purifier
- Sink Cover
- Range Cover
- Galley Extension
- Double Door Refrigerator
- 6 Gal. Gas/Electric DSI Hot Water Heater
- Water Heater By-Pass (Forced Option)
- Oven
- Microwave
- Create-a-Breeze™ Fan (Exchange)
- AM/FM CD/DVD Stereo
- TV Antenna with Booster and Cable Hook-Up
- Bedroom TV Hook-Up
- Extra Roof Vent
- 13,500 BTU Ducted A/C
- 15,000 BTU Ducted A/C
- Bedspread
- Tub Surround
- Mini Blinds
- Day/Night Shades
- Wall Border
- Swivel Rockers*
- Outside Grill
- Awning
- Electric Awning
- 2 Stabilizer Jacks
- Outside Shower
- Diamond Plate
- Fiberglass Front Cap with Diamond Plate
- Power Front Jacks
- 30 lb. Gas Bottles
- Radial Tires
- Spare Tire and Carrier
- AM/FM CD/DVD Home Theater Surround Sound System
- PUMA Den*
- Bath Skylights
- Free Standing Dinette*
- Overhead Cabinets in Slide Room*
- Hide-A-Bed Sofa*
- Comfort Air Bed
- Glass Shower Door*
- Roof Ladder
- Heated Tanks

PUMA PREMIER PACKAGE

*Available on Select Models

CONSTRUCTION & FEATURES



SIDE-PAW KITCHEN



REAR STORAGE
(Standard on 27-FQ and 28-BHS)



PUMA DEN DOOR
(Optional)



BAGGAGE COMPARTMENT WITH SLIDING TRAY
(Select Toy Hauler Models Only)

CONSTRUCTION & FEATURES



- A. Rubber Roof (12 year warranty)
- B. Rugged, Powder Coated Steel I-Beam Frame
- C. Sturdy .024 Gauge Aluminum Skin
- D. Exterior Amber Lens Patio Light
- E. Exterior Hitch Light for Night-Time Hook Up
- F. 51 Gallon Fresh Water Tank
- G. Bold Exterior Graphics
- H. Residential Grade Carpet-21 oz. with Pad
- I. Color Band Metal Enhances Exterior Looks
- J. Sidewall Studding Spaced 16" Apart
- K. Longitudinal Floor Studding Spaced 12" Apart
- L. 5/8" One Piece Floor Decking
- M. New Beauflor® Linoleum Flooring Cold Crack Resistant
- N. R7 Fiberglass Insulation Cut and Glued Between Sidewall Studs
- O. 4-1/2" Crowned Truss Roof Rafters
- P. Steel Crossmembers for Added Support
- Q. Floor Ducted Heat
- R. Insulated Wrapped Ducted Air Conditioning Runs
- S. 3/8" Roof Decking
- T. Puma "Next Generation" Enclosed and Heated Water Tank

PUMA PREMIER PACKAGE (AVAILABLE IN ALL MODELS!)

- Folding Grab Handle
- Raised Panel Cabinet Doors (Eye Level Living Room and Kitchen)
- Overhead Cabinets in Super-Slide Models
- Bi-Fold Doors In Place of Curtains (Where Applicable)
- Day/Night Window Shades
- Upgraded Front Cap (Fifth Wheels)
- AM/FM CD/DVD Home Theater Surround Sound System
- 6 Panel Interior Passage Doors
- Color Band Metal at the Top of the Coach
- Diamond Plate Standard
- High End Metal Rear Bumper Cover
- Chrome Trim Rings and Hubs on the Wheels
- Throw Pillows for the Sofa
- Roof Ladder
- Special Puma Premier Package Decal
- Upgraded Mattress
- Outside Shower
- Radial Tires
- 2-Exterior Speakers
- 30 lb. LP Gas Bottles
- 22" LCD TV

PARK TRAILER RESIDENTIAL PKG.

- Residential Style 18 Cu. Ft. Refer
- Patio Door
- Free-Standing Range

- Sink Cover
- Range Cover
- Water Purifier
- 6 Gal. Gas & Electric Hot Water Heater
- Wall Border
- Outside Grill

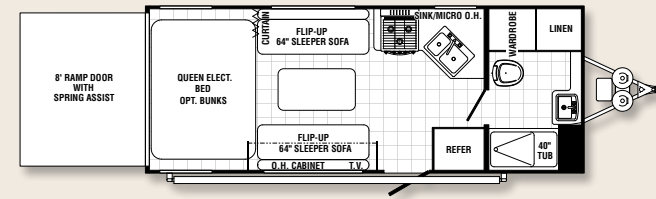
PUMA UNLEASHED

356-QLB SHOWN IN GARNET DECOR

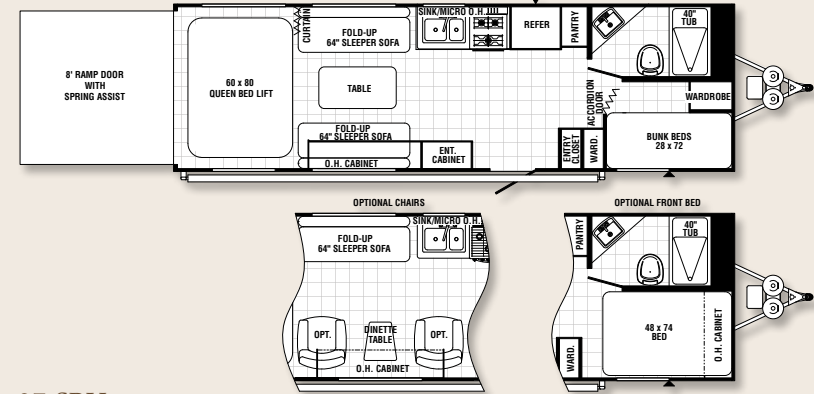


TRAVEL TRAILERS

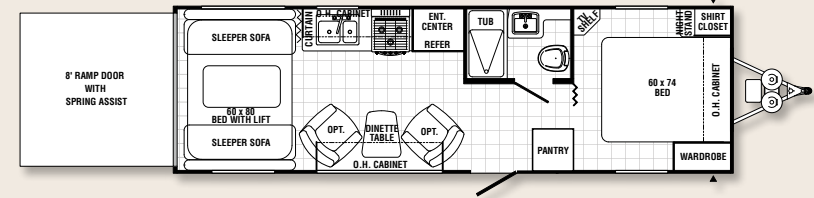
21-TFU



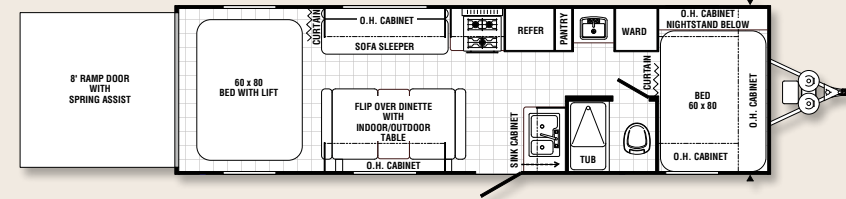
26-TDB



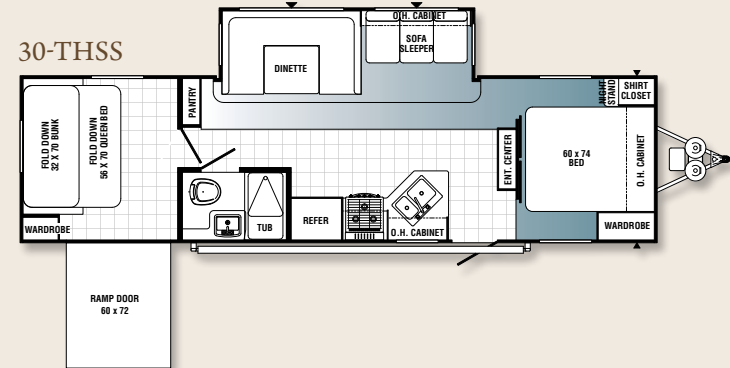
27-SBU



28-TBU



30-THSS

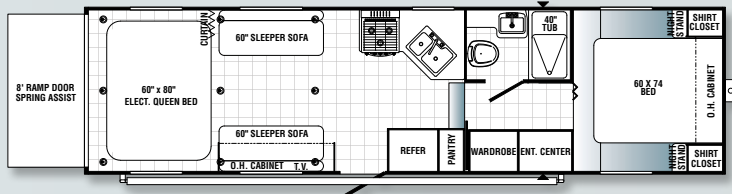


Maple cabinets come standard with regular Puma decor.

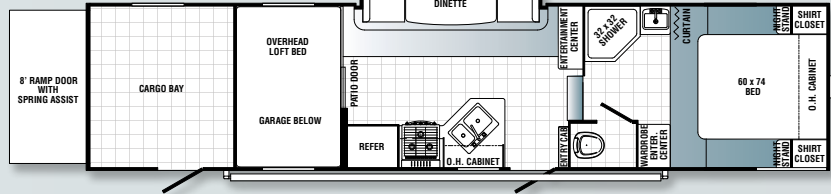


FIFTH WHEELS

298-FQU



356-QLB



STANDARDS & OPTIONS

- Heavy Duty I-Beam Frames with EZ Lube Axles
- 1/4" x 8" Tie Down Reinforcement Plates for Secure Cargo Tie Downs
- Beaver Tail Rear Floor for Easy Loading
- 2" x 2" Wood Framed Sidewalls on 16" Centers
- 2" x 3" Floor Joist on 10" Centers
- R-7 Insulation Floor, Walls, and Ceiling for Comfort
- One Piece 5/8" Floor Decking with a 25 Year Limited Warranty
- One Piece Beauflor® Linoleum
- 3/8" Walkable Roof Decking Over 4-1/2" Crowned Roof Rafters
- One Piece Rubber Roof with 12 Year Warranty
- Insulated Duct For Air Conditioning in Ceiling
- Floor Ducted Heat
- Durable Easy-to-Clean Puma Silver Interior Wall Vinyl
- 55 Amp Converter Standard
- 7' Rear Ramp Door Height, 8' on 356-QLB
- 5.1 Dolby Surround Sound System with Sub-Woofer, AM/FM/DVD Player, Weather Band, XM Radio, and Plug-In for iPod (N/A 21-TFU)
- 22" LCD Flat Screen TV with Movable Bracket for Easy Mounting Inside or Outside (N/A 21-TFU)
- 26" LCD TV in 356-QLB
- Front Baggage Compartment with Sliding Tray (27-SBU, 28-TBU, 298-FQU & 356-QLB)
- Front Exterior Baggage Compartment
- Sofas Fold-Down into Queen Bed
- Tinted Safety Glass

OPTIONS

- Water Purifier
- Sink Cover
- Range Cover
- Galley Extension (N/A 26-TBD)
- Double Door Refrigerator
- 6 Gal. Gas/Elec. DSI Hot Water Heater
- Water Heater By-Pass
- Oven
- Microwave
- Convection Microwave/Cook Top
- Create-A-Breeze™ Fan (Exchange Fantastic Vent Fan on Travel Trailers)
- AM/FM CD/DVD Stereo (21-TFU Only)
- 19" TV (Std. 27-SBU & 28-TBU)
- Home Theater DVD Sound System with AM/FM CD (21-TFU Only)
- 26" TV Upgrade (Available for Models with Std. 19" TV)
- 2 Exterior Speakers
- TV Antenna w/Booster & Cable Hook-Up
- Bedroom TV Hook-Up
- Extra Roof Vent
- 13,500 BTU Ducted Air Conditioning
- 15,000 BTU Ducted Air Conditioning
- Bedsprad (N/A 26-TBD)
- Double Bed & Spread (26-TDB)
- Manual Track Queen Bed (Travel Trailers Only)
- Single Electric Track Queen Bed
- Double Electric Track Queen Bed
- Tub Surround
- Bath Skylight
- Glass Shower Door (Fifth Wheels Only)
- Mini Blinds
- Day/Night Shades (Fifth Wheels Only)
- Wall Border
- Woodgrain Linoleum
- Awning
- Electric Awning
- 1 Swivel Chair (27-SBU Only)
- 2 Stabilizer Jacks
- 4 Stabilizer Jacks (Travel Trailers Only)
- Power Front Jacks (Fifth Wheels Only)
- Roof Ladder
- Outside Shower
- Outside Grill (Travel Trailers Only)
- 4.0 KW Gas Onan Generator
- 3.6 KW LP Onan Generator
- 30 Gal. Fuel Pump Station
- 30 lb. Gas Bottles & Cover
- Zip Screen
- Hide-a-Screen
- Hitch Cover (Fifth Wheels Only)
- Front Fiberglass Cap with Diamond Plate
- Diamond Plate
- Mission Alum. Modified Rim/Radial Tire
- Heated Tanks
- Wash Down Kit
- Spare Tire & Carrier
- Radial Tires
- Folding Grab Handle
- Carbon Monoxide Detector
- Z240



FUEL STATION

SPECIFICATIONS

MODELS	21-TFU	26-TDB	27-SBU	28-TBU	30-THSS	298-FQU	356-QLB
Hitch Dry Weight (lbs.)	861	1048	902	1206	1145	1819	2557
Dry Axle Weight (lbs.)	4672	5488	6028	6069	6200	5810	6651
Total Dry Weight (lbs.)	6004	6536	6930	7275	7345	7629	9208
Carrying Capacity (lbs.)	1856	4200	3220	3125	3098	3433	4432
GVWR (lbs.)	7861	11,208	11,062	10,400	11,305	11,979	14,557
Tire Size	205/75D/15	225/75D/15	225/75D/15	225/75D/15	225/75D/15	225/75D/15	235/80D/16
Interior Height	84"-96"	84"-96"	84"-96"	84"-96"	80"	8'0"	8'6"
Exterior Height w/AC	12'	12'	12'	12'	11'1"	12'	13'2"
Exterior Width	96"	96"	96"	96"	96"	96"	96"
Overall Length	24'7"	30'1"	30'5"	31'2"	35'4"	30'0"	35'9"
Fresh Water Capacity (gal.)	51	100	100	100	100	51	100
Grey Water Capacity (gal.)	32	42	42	42	42	32	42
Black Water Capacity (gal.)	32	42	32	32	32	42	32
Awning Size	14'	15'	16'	16'	16'	18'	21'



PALOMINO RV ENCOURAGES YOU TO BUY LOCALLY

Palomino RV strongly encourages our retail customers to purchase from their local dealership whenever possible due to the following factors:

- Our Dealers are, as a rule, independently owned and operated businesses. Outside of those customers they personally sold products to, they are not contractually obligated to perform warranty service on Palomino products that were purchased elsewhere. There **may** be an occasion that you would be required to return to the point of purchase to satisfy warranty requirements.
- Although many dealerships will eventually service products not purchased at their place of business, they will usually take care of their customers and other Palomino customers who are traveling away from their local dealer as they would their own.
- Local purchases allow a customer to establish a relationship with a dealer close to home. This relationship provides the customer with a convenient location for service and support from a "home town" professional.
- The opportunity for a thorough PDI (Pre-Delivery Inspection) and product orientation is an additional benefit of buying from your local dealer, further providing the opportunity for refresher courses or the ability to get questions answered much more conveniently.
- For our Canadian customers, there are also requirements which must be met to bring an RV purchased out of the country to their home. Although not insurmountable, these requirements may involve such things as additional inspections and certifications, taxes and fees. Your local Canadian Dealer is a professional at meeting these requirements.

Palomino RV's goal is for all RV Owners to fully enjoy their RV experience. In light of this goal, and considering the advantages of buying local, we encourage you to be thorough when determining what product to purchase and which dealer to purchase it from as both are key to your ultimate satisfaction and the realization of your dreams.

New PUMA SIDE PAW KITCHEN

The industry leading all new Puma Side Paw Kitchen, and the attendant external entertainment center, makes your new Puma truly the most complete recreational vehicle on the market today. Your family will love it, your friends will wish they had it, and your neighbors... well, invite them over so you can brag on it.

OUTSIDE KITCHEN AVAILABLE ON:

27-KFQ • 30-KDBSS • 30-KFBDS

31-KBHSS • 295-KBHSS



PUMA DIVISION

Forest River, Inc.
31450 M-86 West
Colon, MI 49040
Phone: (269) 432-3271
www.palominoRV.com

All illustrations and specifications contained in this literature are based on the latest product information at time of publication. Forest River, Inc. reserves the right to make changes in prices, colors, materials, equipment and specifications at anytime without notice and assumes no responsibility for any error in this literature. All weights shown are approximate. All units are shipped FOB. point of manufacture.

CONSULT YOUR LOCAL DEALER FOR WARRANTY INFORMATION.

YOUR DEALER