

# GREY WOLF



*by Forest River*



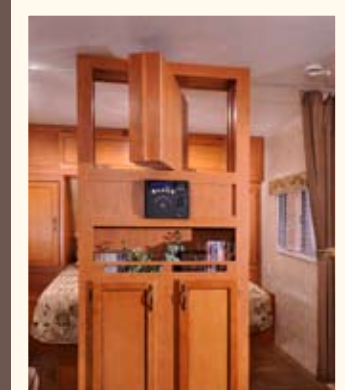
*GREY WOLF*  
  
*by Forest River*





*(Below) The additional bunk slideout in the rear creates a spacious living and sleeping area for children and guests. The addition of overhead cabinets, and wardrobe space allows for more storage*

*(Below) The Grey Wolf central entertainment center offers a pivotal Tv location so you can watch your favorite movie or program from the comfort of the living room as well as the bedroom.*



**28A+KS in Crimson Gold**

*(Above) The Grey Wolf by Cherokee is engineered with impeccable quality, distinctive features, superior comfort and remarkable affordability. Grey Wolf offers our customers a chance to escape the ordinary and relax, to enjoy family and friends and to see nature in all its beauty and wonder. These special life moments are the reasons we take such pride in all we do.*







*(Above) The dry erase board cabinet is a fun place to jot down notes or other information for the family. This cabinet also doubles as a hidden switches area in which the lights, monitor panel and slide out may be operated.*

*Whether you are planning a weekend retreat or an extended vacation the Grey Wolf will take you there in style.*



**25RB in Cinnamon**

*Spaciously laid out, the Grey Wolf has the room for entertaining and relaxing, all while enjoying the residential amenities you have come to expect from us.*

## GREY WOLF INTERIOR FEATURES

**A.** Our bedrooms are restful retreats that features nightstands, large wardrobe closets, 2 large storage cabinets over the bed and reading light for your evening comfort.



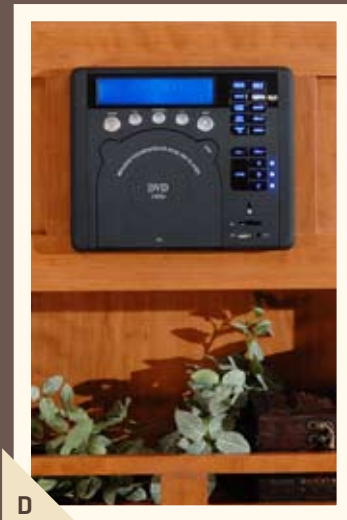
**B.** The stylish radius cabinets offers a residential look when paired with our beautiful Cherry cabinets.



**C.** The wide radius entry door also includes a screen door for enjoying a cool breeze on a warm summer day. The attractive arched door padding is framed with cherry wood and a coordinating fabric.



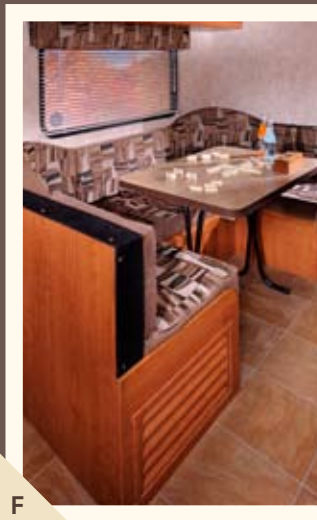
**D.** Enjoy all of your favorite music and movies on our high powered AM/FM/CD/DVD with MP3/ iPod hookup stereo system.



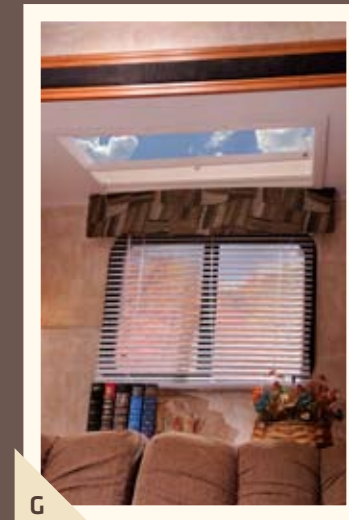
**E.** Our wooden louvered furnace vent covers blends in beautifully with the rest of our rich cabinets.



**F.** Grey Wolf's large, over-sized U-shaped dinettes are perfect for large groups who want to enjoy a meal or who want to play cards or games. The removable dinette table can be taken outside or left inside. The slider legs can be folded down to make into an extra sleeping area.



**G.** The slide out sunroom offers abundant light even on the cloudiest of days. Equipped with shades, you can close them if you desire.





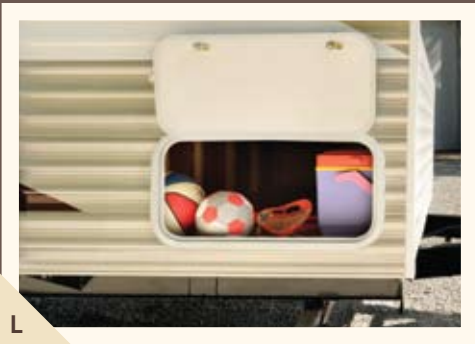
# GREY WOLF EXTERIOR FEATURES



H



K



L



I



M



J



*H. Our high- rise double step with skid pads allows for a safe and easy entry into the Grey Wolf.*

*I. Grey Wolf installs 2 exterior speakers to give you excellent sound quality while you enjoy the outdoors.*

*J. The exterior porch light by the entry door provides security and it's amber light will help keep the bugs away.*

*K. Our wide, radius fiberglass entry doors gives you plenty of room while entering and exiting the unit.*

*L. The large radius exterior storage compartments all you to pack all kinds of travel gear and equipment.*

*M. Cable TV hookup is a standard feature giving you a wide variety of programs*

*(Left and Below) The graphics on the Grey Wolf are very attractive and are an eye catcher, while the front pebble board front metal helps prevent stone chips.*





### **28BHKS in Earth Tan**

*(Above) The oversized, U- shaped dinette can be found in all bunkhouse models with slide outs. This unique, arched cushion design provides more comfort while enjoying a meal or playing family games. The removable dinette table can be brought outside for dining in the fresh air and has folding, slider legs to convert the dinette into an additional sleeping area.*

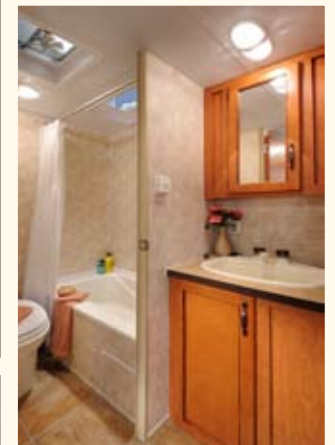
*(Right) The kitchen slide out has abundant storage and allows more livability and roominess while relaxing indoors.*



*(Below) At the end of an adventurous day, our bedrooms are a relaxing treat. They offer comfort, usability and abundant storage. Two overhead cabinets provide storage across the entire front of the bedroom, while two wardrobe closets gives you a place to hang more items. The crackled wall board at the head of the bed add a touch of rich color to an already beautiful area.*



*(Below) An extra large lavatory sink, a double reinforced tub base, power vent, cherry medicine cabinet and optional skylight over the tub highlights our bathrooms"*







*Designed to accommodate every camping enthusiast needs, the Grey Wolf has it all. By offering you the best floor plans and features, the Grey Wolf can make your dreams a reality. Easy and light enough for your vehicle to tow, Grey Wolf makes life a little bit easier.*

**26BH in Crimson Gold**

*One step into the Grey Wolf, you will notice all of the stylish details and designs. Arched dinette cushions and valances show a soft and elegant look, while the dry erase board and hidden switches cabinet offers convenience. The over-sized dinette window offers you tremendous views and the security of being able to keep children in sight. These features are just a few reasons why Grey Wolf stands above the rest.*







**19RR in Cinnamon**, shown with optional *Gel Coat Fiberglass Exterior*  
 The versatility of the Grey Wolf can be seen in the 19 RR. The rear ramp door and cargo area offers a massive storage area for camping supplies, golf carts, motorcycles, or ATVs, yet features the convenient amenities of the conventional towable.



## GREY WOLF HYBRID

### **18 Hybrid in Crimson Gold**

*Our hybrids are designed with the customer in mind. At a full 8 foot width, you will feel the extra room and living space, especially while sleeping. Grey Wolf also provide a larger bathroom with a corner shower, toilet, vanity and medicine cabinet. Cable and radius bunk ends for more strength, quick lock tent door latches for more secure locking and bunk fan with lights providing better ventilation are additional features that separates Grey Wolf hybrid trailers from the rest.*





## GREY WOLF FABRICS

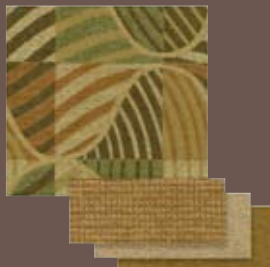
**Cinnamon**



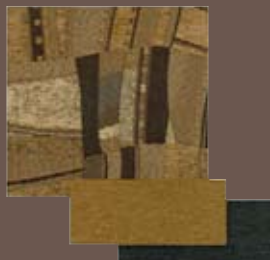
**Crimson Gold**



**Sage**



**Earth Tan**



**Cabinetry**



**Wall Panels**



**Linoleum Floor**

**Counter top**



## GREY WOLF STANDARDS + OPTIONS

### WINDOWS

- Mini Blinds on All Windows
- Hard window valances with lambrequins
- Radius Windows

### BEDROOM

- Bedspreads
- Wardrobe Closets
- Dual Bulb Reading Lights
- Two Large Overhead Cabinet Storage
- Night Stands Each Side of Bed

### KITCHEN / LIVING

- High Rise Faucet
- Self Edged Counter Tops and Tabletops
- Large Storage Doors
- Granite Looking Counter Tops
- Breakfast Bar ( Selected Floorplans)
- Monitor Panel
- Roller glided drawers
- Double Door Refrigerator

### SLIDE OUT

- Skylights Over Dinette and Sofa with Shade (Selected Floorplans)
- 40" Dinette ( Selected Floorplans)
- One Piece Slide Out Side Walls
- U- Shaped Dinette with Removable Table on All Bunkhouse Models (Selected Floorplans)
- Decorative Cherry Paneling on all Slide Out End Walls

### CABINETS

- Cherry Stained Cabinets
- Large Overhead Cabinets
- High Grade Cabinet Handles
- Rounded Styled Cabinets
- Upgrade Cabinet Hardware
- Hidden Switches cabinet with Dry Erase Board front

### BATHROOM

- Acrylic Bath Sinks (Large)
- Shower Curtain
- Linoleum in Bath Area
- Double Framed Tub Bases
- Medicine Cabinet

### APPLIANCES

- High Output Cook Top
- Carousel High Output Microwave
- Digital TV Antenna with Power Booster
- 13.5 Air Conditioner
- Water Heater By Pass
- AM/FM/CD/DVD Stereo with iPod Hookup.
- LCD Bracket and TV Ready
- Six Gallon Re-igniting Turbo Water Heater

### EXTERIOR

- Radius Luggage Doors
- 20 lb. LP Bottles w/Cover (TT)
- Awning Drip Rail and Down Spouts
- Patio Awning
- Large Radius Storage Compartments
- One Piece Rubber Roof
- Upgrade Graphics
- Two- Toned Exterior Metal
- Outside Stereo Speakers
- Radius Entry Door
- Cable Hook up
- Outside Outlet
- Radius, Double Drop Step

### CONSTRUCTION FEATURES

- 3/8" Walkable Roof Decking
- Radius Truss Roof Rafters
- 5/8" Tongue and Groove Plywood Floor
- 2" x 3" Floor Joists
- Powder Coated, Rust Resistant Frame
- R7 Fiberglass Insulation
- Linoleum Front to Back
- Roto Cast (Seamless) Holding Tanks
- 12" on Average Side Wall Stud
- Galvanized Steel High Wind Bands

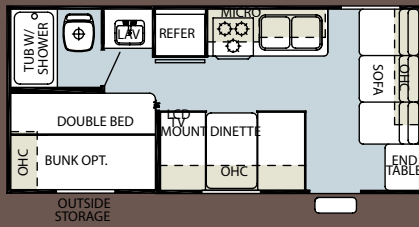
### OPTIONS

- Stabilizing Jacks (Std. On Slides)
- Spare Tire w/Carrier and Cover
- 6 Gallon Gas/Electric DSI Turbo Water Heater
- Skylight Over Tub
- High Output Oven
- Scare Light
- LCD Flat Screen Television Set
- Gel Coated Sidewalls ( Travel Trailer)
- Ducted Air Conditioning ( Available 22' and Over)
- 30 # LP Bottles
- Heavy Duty Plank Wood Linoleum

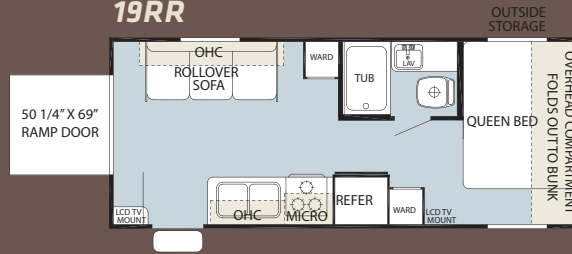


# GREY WOLF TRAVEL TRAILER FLOORPLANS

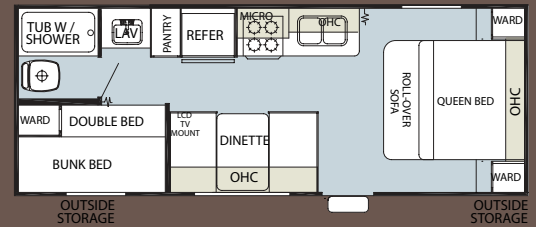
17BH \*\*



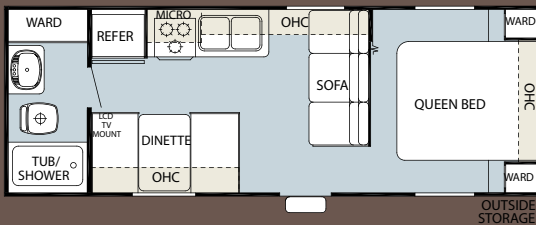
19RR



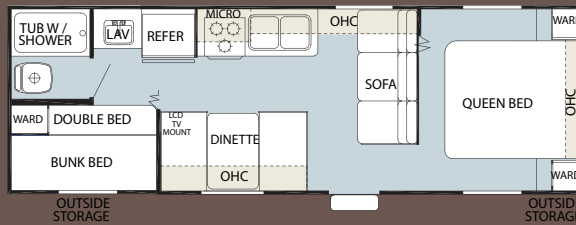
22BH \*\*



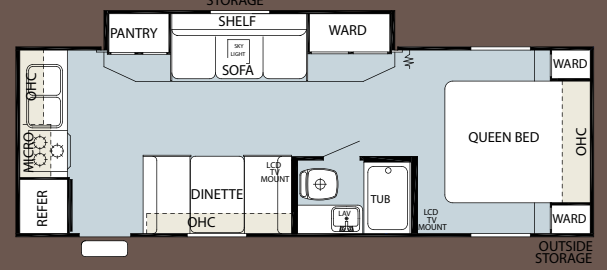
25RB



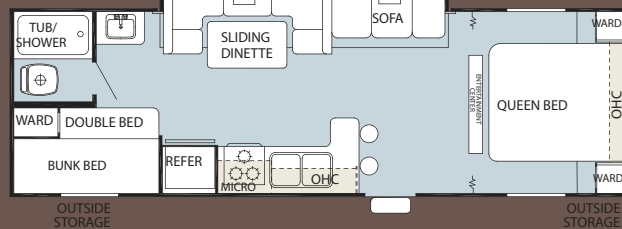
26BH \*\*



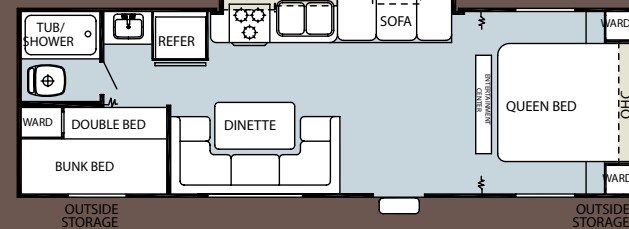
26K \*\*



28BH \*\*



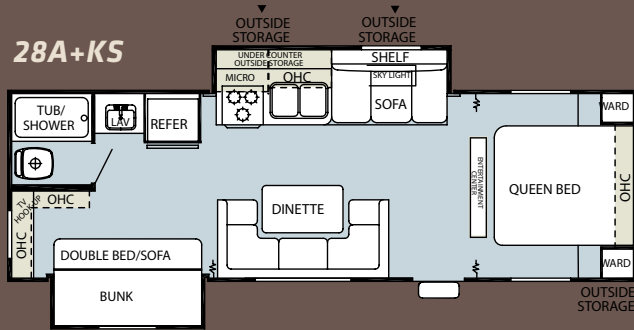
28BHKS \*\*



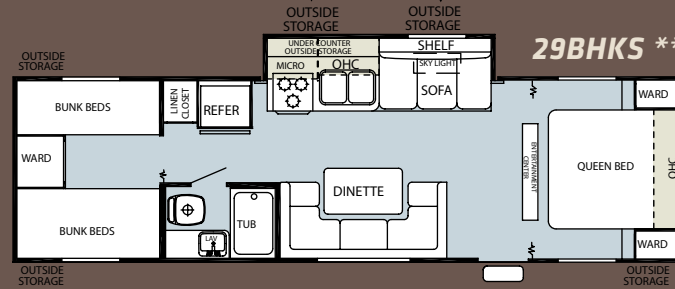
**\*\* Floorplans also made in our Oregon plant.**



**28A+KS**

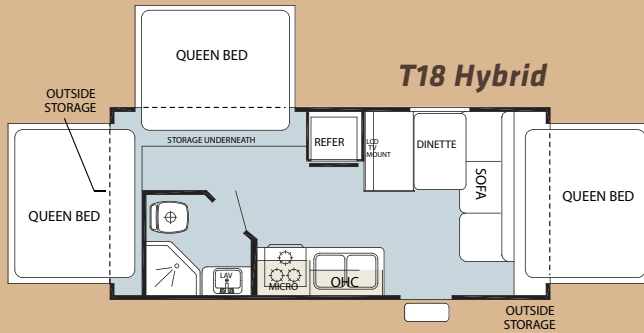


**29BHKS \*\***

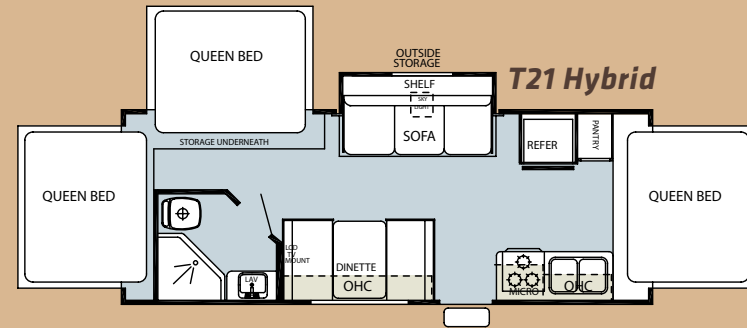


# GREY WOLF HYBRID

**T18 Hybrid**



**T21 Hybrid**



	<b>T17BH</b>	<b>T19RR</b>	<b>T22BH</b>	<b>T25RB</b>	<b>T26BH</b>	<b>T26K</b>	<b>T28A+KS</b>	<b>T28BH</b>	<b>T28BHKS</b>	<b>T29BHKS</b>	<b>T18 Hybrid</b>	<b>T21 Hybrid</b>
DRY HITCH WEIGHT	522 lbs	574 lbs	547 lbs	474 lbs	402 lbs	640 lbs	590 lbs	752 lbs	752 lbs	626 lbs	368 lbs	703 lbs
UNLOADED VEHICLE WEIGHT	3700 lbs	4142 lbs	4181 lbs	4273 lbs	4541 lbs	5265 lbs	5701 lbs	5296 lbs	5296 lbs	5917 lbs	4015 lbs	4722 lbs
AXLE WEIGHT	3178 lbs	3568 lbs	3634 lbs	3799 lbs	4139 lbs	4625 lbs	5111 lbs	4544 lbs	4544 lbs	5291 lbs	3647 lbs	4019 lbs
SHIP WEIGHT	3700 lbs	4142 lbs	4273 lbs	4541 lbs	5265 lbs	5701 lbs	5296 lbs	5296 lbs	5296 lbs	5917 lbs	4015 lbs	4722 lbs
GVWR W/BRAKES	7522 lbs	7574 lbs	7566 lbs	7474 lbs	7402 lbs	7640 lbs	7590 lbs	7752 lbs	7752 lbs	7626 lbs	7368 lbs	7703 lbs
CARGO CARRYING CAPACITY	3822 lbs	3432 lbs	3385 lbs	3201 lbs	2861 lbs	2375 lbs	1889 lbs	2456 lbs	2456 lbs	1709 lbs	3353 lbs	2981 lbs
EXTERIOR LENGTH	22'2"	23'11"	25'11"	27'3"	29'3"	28'9"	30'11"	30'11"	30'11"	33'11"	22'9"	26'2"
EXTERIOR HEIGHT W/ AC	10'5"	10'5"	10'5"	10'5"	10'5"	10'5"	10'5"	10'5"	10'5"	10'5"	10'5"	10'5"
EXTERIOR WIDTH	97"	97"	97"	97"	97"	97"	97"	97"	97"	97"	97"	97"
BEDROOM INTERIOR HEIGHT	78"	78"	78"	78"	97"	78"	78"	78"	78"	78"	N/A	N/A
FURNACE BTU	20 BTU	20 BTU	20 BTU	20 BTU	20 BTU	20 BTU	20 BTU	20 BTU	20 BTU	20 BTU	20 BTU	20 BTU
GREY CAPACITY	41 Gal	31 Gal	41 Gal	41 Gal	41 Gal	41 Gal	41 Gal	41 Gal	41 Gal	41 Gal	31 Gal	41 Gal
BLACK CAPACITY	31 Gal	31 Gal	30 Gal	31 Gal	31 Gal	41 Gal	31 Gal	31 Gal	31 Gal	31 Gal	31 Gal	31 Gal
FRESH CAPACITY	50 Gal	50 Gal	50 Gal	50 Gal	50 Gal	41 Gal	50 Gal	50 Gal	50 Gal	50 Gal	50 Gal	50 Gal
SOFA SIZE	68"	68"	N/A	68"	68"	68"	58"	58"	58"	58"	68"	68"
AWNING SIZE	15'	15'	15'	15'	15'	15'	15'	15'	15'	15'	10'	15'





## PEACE OF MIND.

Forest River has yet another exclusive feature to offer: **One year of free roadside assistance will be given to every 2010 Grey Wolf customer. This is just one more way to say "Thank you" and to ensure an enjoyable traveling experience.**

FOREST RIVER ENCOURAGES YOU TO

# BUY LOCALLY

FROM YOUR HOMETOWN DEALERSHIP.

Forest River, Inc. strongly encourages our retail customers to purchase from their local dealership whenever possible due to the following factors:

- Our Dealers are as a rule, independently owned and operated businesses. Outside of those customers they personally sold products to, they are not contractually obligated to perform warranty service on Forest River products that were purchased elsewhere. There may be an occasion that you would be required to return to the point of purchase to satisfy warranty requirements.
- Although many dealerships will eventually service products not purchased at their place of business, they will usually take care of their customers and other Forest River customers who are traveling away from their local dealer as they would their own.
- Local purchases allow a customer to establish a relationship with a dealer close to home. This relationship provides the customer with a convenient location for service and support from a "home town" professional.
- The opportunity for a thorough PDI (Pre Delivery Inspection) and product orientation is an additional benefit of buying from your local dealer. Further providing the opportunity for refresher courses or the ability to get questions answered much more conveniently.
- For our Canadian customers, there are also requirements which must be met to bring an RV purchased out of the country to their home. Although not insurmountable, these requirements may involve such things as additional inspections and certifications, taxes and fees. Your local Canadian Dealer is a professional at meeting these requirements.

Forest River's goal is for all RV Owners to fully enjoy their RV experience. In light of this goal, and considering the advantages of buying local, we encourage you to be thorough when determining what product to purchase and which dealer to purchase it from as both are key to your ultimate satisfaction and the realization of your dreams.



Forest River, Inc. 402 Lehman Avenue, Topeka, IN 46571  
Sales Department: 260.593.2539  
Service Department: 260.593.2428  
[www.forestriverinc.com](http://www.forestriverinc.com) [www.forestriveraccessories.com](http://www.forestriveraccessories.com)

All illustrations and specifications contained in this literature are based on the latest product information at time of publication. Forest River reserves the right to make changes in prices, colors, materials, equipment and specifications at anytime without notice and assumes no responsibility for any error in this literature. All units are shipped F.O.B. Goshen, Indiana. **CONSULT YOUR LOCAL DEALER FOR WARRANTY INFORMATION. LITHO: U.S.A. FOR 6061**

**YOUR GREY WOLF DEALER**