

2010 *Four Winds*

BY FOUR WINDS INTERNATIONAL





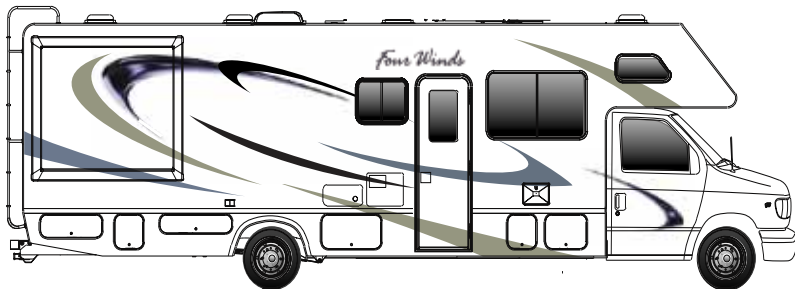
CABINETY

Standard Cinnamon
Maple Cabinetry



Optional Cherry
Cabinetry

EXTERIOR DECOR



STANDARD EXTERIOR GRAPHICS



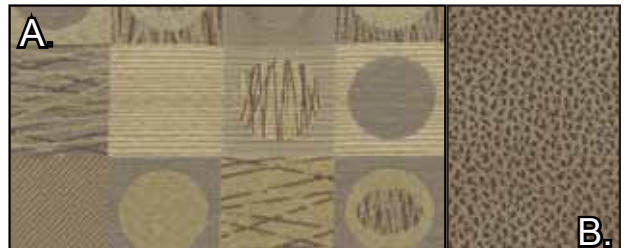
OPTIONAL SILVER BENZ PARTIAL PAINT

INTERIOR DECOR

KIWI



MOCHA



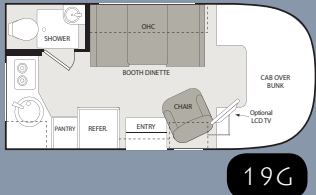
SIZZLE GREY



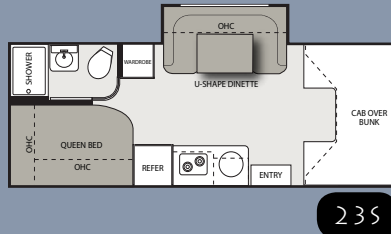
A. MAIN PRINT B. ACCENT FABRIC

FLOORPLANS

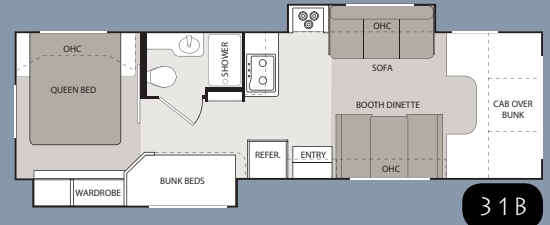
INDICATES
MEGA STORAGE



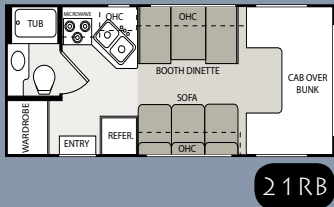
19G



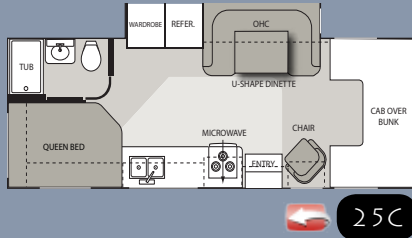
23S



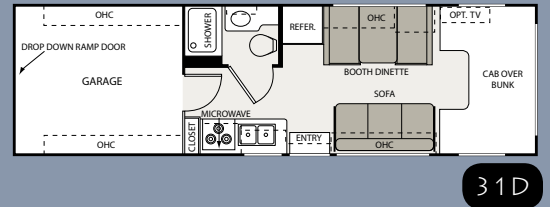
31B



21RB



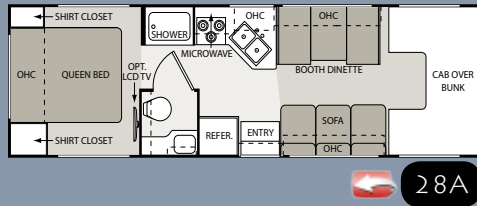
25C



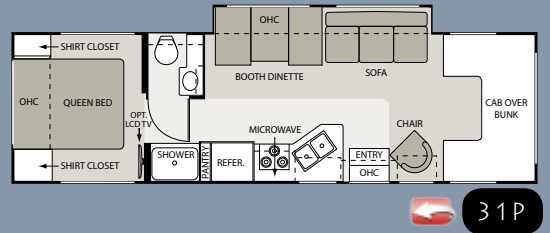
31D



23A



28A



31P

SPECIFICATIONS

	Model	19G	21RB	23A	23S	25C	28A	31B	31D	31P
WEIGHT RATING (LBS)	Ford Chassis with Triton engine	5.4L/V-8	5.4L/V-8	6.8L/V-10	N/A	6.8L/V-10	6.8L/V-10	6.8L/V-10	6.8L/V-10	6.8L/V-10
	Gross Vehicle (GVWR)	9,600	11,500	12,500	N/A	14,500	12,500	14,500	14,500	14,500
	Gross Combined (GCWR)	13,000	13,000	18,500	N/A	20,000	18,500	20,000	20,000	20,000
	Chevy Chassis with 6.0L Vortec engine	N/A	V-8	V-8	N/A	V-8	V-8	V-8	V-8	V-8
	Gross Vehicle (GVWR)	N/A	12,300	12,300	N/A	14,200	12,300	14,200	14,200	14,200
	Gross Combined (GCWR)	N/A	16,000	16,000	N/A	17,600	16,000	17,600	17,600	17,600
	Sprinter Chassis with 3.0L diesel engine	N/A	N/A	N/A	V-6	N/A	N/A	N/A	N/A	N/A
	Gross Vehicle (GVWR)	N/A	N/A	N/A	11,030	N/A	N/A	N/A	N/A	N/A
	Gross Combined (GCWR)	N/A	N/A	N/A	14,530	N/A	N/A	N/A	N/A	N/A
MEASUREMENTS	Wheel Base (Ford/Chevy) (in Inches)	138	138/139	158/159	170"	189/190	190/191	223"/224"	211"/212"	219/220
	Exterior Length (without ladder)	19'10"	22'8"	24'10"	24'10"	27'4"	29'9"	32'2"	31'1"	32'3"
	Exterior Height (with air conditioning)	10'3"	10'10"	10'10"	11'	10'10"	10'10"	11'5"	11'1"	10'10"
	Exterior Width (without mirrors)	91"	99"	99"	90"	99"	99"	99"	99"	99"
	Interior Height	80"	82"	82"	80"	82"	82"	82"	80"	82"
	Awning Size (manual/electric)	8'/-	12'/12'	15'6"/-	15'/15'	18'/18"	14'/14'	10'6"/10'6"	20'/20'	16'/16'
CAPACITIES	Fuel - Ford/Chevy (gallons)	40/-	37/35	55/57	26.4	55/57	55/57	55/57	55/57	55/57
	LPG (pounds)	40.9	40.9	40.9	68.2	40.9	40.9	40.9	40.9	40.9
	Fresh Water (gallons)	20.5	21	40	40	40	40	40	23	40
	Waste Water (gallons)	17	25	24.5	38	24.5	25	32	32	31
	Gray Water (gallons)	17	22	38.5	34	38.5	22	36	36	29
	Water Heater (gallons)	6	6	6	6	6	6	6	6	6
	Furnace (BTUs)	16,000	25,000	25,000	25,000	30,000	30,000	30,000	25,000	30,000
	Exterior Storage Capacity (cubic feet)	6.5	6	69	65	69	111	47	17	101

2010 FOUR WINDS CLASS C STANDARD & OPTIONAL FEATURES:

BODY CONSTRUCTION/EXTERIOR		WHEEL LINERS (N/A on 19G)		Decorative raised wood refrigerator panels		China bowl toilet (N/A on 19G)	
Fully welded tubular aluminum roof and sidewall cage construction	S	Wheel liners (N/A on 19G)	O	Decorative raised wood refrigerator panels	O	China bowl toilet (N/A on 19G)	S
Vacu-Bond laminated roof, walls and floors with high-density block foam insulation	S	Upgrade dash insert (Ford & Chevy)	O	2-burner cooktop (19G & 23S only)	S	Skylight in shower	S
Slick fiberglass exterior	S	Infiniss™ Leather driver and passenger captain's chairs	O	3-burner high-output gas range top (N/A on 19G & 23S)	S	Shower with pleated shower curtain (19G only)	S
Exterior graphics package	S	Power driver seat (Ford chassis only)	O	Microwave oven	S	Shower with glass door (N/A on 19G)	O
Exterior graphics/partial paint package	O	Back-up monitor (Std. 31B)	O	SAFETY & CONVENIENCE			
Exterior rear Mega Storage compartment (23A, 25C, 28A & 31P only)	S	INTERIOR		3-burner high-output gas range top with oven (N/A on 19G & 23S)	O	Entry door with deadbolt lock	S
Rear Garage with cargo ramp (31D only)	S	Residential linoleum (galley, bath and entry way)	S	Convection microwave	O	Telephone jack	S
Seamless roto-cast storage compartments	S	Linoleum throughout the coach (19G & 23S only)	S	Laminate countertops	S	Smoke, LPG, carbon monoxide detector and fire extinguisher	S
Flush mount radius luggage doors	S	Metal entry grab handle	S	Large single bowl sink (19G & 23S only)	S	Passenger seat belts in select areas	S
Premium one-piece TPO roof (Energy Star approved)	S	Windshield privacy curtain	S	Large double bowl sink	S	Child safety seat tether anchor in booth dinette (N/A in 19G, 23S & 25C)	O
Manual patio awning	S	13,500 BTU roof air conditioner in front	S	Flip-up countertop extension (23A, 23S, 31B & 31P only)	S	Slide-out battery tray (N/A 23S)	S
Electric patio awning (N/A on 19G & 31B)	O	15,000 BTU roof air conditioner in front (N/A on 19G & 23S)	O	Full extension metal drawer guides	S	Convenience Package: includes keyless entry and valve stem extenders (N/A on 19G & 23S)	
Slide-out room awning	S	Ceiling ducted air conditioning system (N/A on 19G & 23S)	S	ENTERTAINMENT & ACCESSORIES			
Roof ladder	S	Cinnamon Maple cabinetry	S	19" LCD television (19G only)	O	ELECTRICAL & PLUMBING	
Drop-down stairwell entrance step (N/A on 21RB & 23S)	S	Cherry cabinetry	O	26" television in front overhead with electric swivel in cab-over (N/A on 19G)	O	Onan® Microquiet™ 4.0 gas generator (4000-watt)(N/A 23S)	S
Manual entrance step (21RB & 31B only)	S	European styled curved cabinet doors (19G only)	S	Entertainment center with 26" LCD television and slide-out bunk (no sliding bunk on 23S)(N/A on 19G, 31B and 31D)	O	Onan® 3.6 LP generator (3600-watt) (23S only)	O
Automatic electric entrance step (21RB & 31B only)(Std. on 23S)	O	Raised panel upper cabinet doors	S	Entertainment center with 32" LCD television and slide-out bunk (31B only)	O	Onan® 3.2KW diesel generator (3200-watts)(23S only)	O
Outside shower	O	Hardware with Brushed Nickel finish	S	Home theater system with DVD player and radio tuner (N/A on 23S)	O	30-amp service with shoreline power cord and battery disconnect switch	S
Rear Cargo Screen (31D only)	O	Day/night shades throughout	S	19" LCD television in bedroom (N/A on 19G, 21RB, 23A and 25C)	O	Automatic generator transfer switch	O
Rear exterior spotlights (31D only)	O	Barrel chair (19G, 23A, 25C and 31P only)	S	19" LCD television in the garage (31D only)	O	Emergency start switch (N/A 23S)	S
AUTOMOTIVE/COCKPIT		Leatherette euro recliner with ottoman in place of barrel chair (23A, 25C and 31P)	O	Dual LCD monitors with DVD and gaming inputs located in the bunk bed overheads (31B only)	O	Second auxiliary house battery (N/A 19G)	O
3,500-lb. trailer hitch (19G & 23S only)	S	Fabric jackknife sofa (N/A on 19G, 23A, 23S and 25C)	S	Outside entertainment center includes a 26" LCD television, AM/FM stereo, CD/DVD player, iPod ready jack and speakers (31P only)	O	6-gallon DSI gas water heater	S
5,000-lb. trailer hitch (N/A 19G & 23S)	S	Infiniss™ Leather jackknife sofa (N/A on 19G, 23A, 23S and 25C)	O	Home theater system with DVD player and radio tuner (N/A on 23S)	O	6-gallon DSI gas/electric water heater	O
AM/FM dash radio with large buttons, CD player and weather band tuner	S	Infiniss™ Leather hide-a-bed sofa with air mattress (31P on a Ford chassis only)	O	Coach radio system (23S only)	O	Water heater bypass system	S
3-point seat belts for driver and passenger	S	Booth dinette (N/A on 23S & 25C)	S	Television antenna and booster	S	Heated and enclosed holding tanks (31B only)	S
Power window and door locks	S	Fabric U-shaped dinette (23S & 25C only)	S	BEDROOM/BATHROOM			
Deluxe exterior mirrors (N/A on 23S)	S	Infiniss™ Leather U-shaped dinette (23S & 25C only)	O	Queen-size bed with innerspring mattress (N/A on 19G & 21RB)	S	Holding tanks with heat pads (N/A on 31B)	O
Deluxe heated remote mirrors (N/A on 19G)(Std. on 23S)	O	Fantastic® fan in kitchen area	O	Bunk beds in hallway slide room (31B)	S		
Aluminum running boards (N/A on 23S)	S	Fantastic® fan in overhead bunk (N/A on 19G & 23S)	O	Bedsprad and pillow shams (N/A on 19G & 21RB)	S		
Spare tire (N/A 19G)	S	GALLEY					
Aluminum wheels (19G only)	S	Single door refrigerator (19G only)	S				
		Double door refrigerator (N/A on 19G)	S				



VEHICLE LOADING: Every effort has been made to provide the greatest number of options for the recreation vehicle owner. Along with these choices comes the responsibility to manage the loads that are imposed by the choices so that they remain within the manufacturer's specified chassis weight limits. Do not overload the recreation vehicle.

IMPORTANT: Towing capacity may vary by chassis model, floorplan, options and loading of the vehicle. This may result in a towing capacity which is less than the maximum capacity of the hitch. Do not exceed the vehicle's Gross Combined Weight Rating (GCWR), or

the hitch rating. A separate functioning brake system is required for any towed vehicle or trailer weighing more than 1,000 lbs. (450 KG) when fully loaded. Liquid capacities and weights are approximations only.

WARNING: This information is intended as a guide only. Weights of individual vehicles may vary. Consult your owner's manual and weight sticker affixed to each vehicle for complete loading, weighing, and towing instructions.

WARRANTY: The vehicles are provided with a one-year, 15,000-mile limited warranty and a three-year, 45,000-mile limited structural warranty. Chassis,

component part and appliance manufacturers issue limited warranties covering those portions of the vehicle not covered by the limited warranties issued by Four Winds International. To learn what portions of the vehicle are excluded from coverage under the limited warranties issued by Four Winds International, please contact your selling dealership or Four Winds International directly, or review the warranty packet inside the vehicle.

Product information, specifications, and photography in this brochure were as accurate as possible at time of printing. Photographs may contain some features

that are optional on your vehicle. Since we continually strive to improve our products, actual products may differ. The manufacturer reserves the right, at any time, to make changes in product design, materials, component specifications and pricing, without notice. All capacities are approximate and dimensions are nominal. Some features or options may be different or unavailable in Canada.



© 2009 Four Winds International
Litho USA 1109 - 10M