

SUNSET CREEK

by SunnyBrook



WHAT AREN'T YOU DOING THIS WEEKEND?



■ ■ ■ *Experience the Difference.*

Some RV manufacturers offer high styling and quality. Others provide value through a lower price. Now and then it can work both ways. Introducing Sunset Creek. The best of all worlds, perfect for any adventure in your world. Great amenities make Sunset Creek incredibly comfortable and stylish. Just like being home. And quality construction is highlighted by our AX5 aluminum framing, heated and enclosed tanks, Fome Cor insulation and more.





■ ■ ■ *Experience the Comfort.*



STANDARDS + OPTIONS

Exterior + Construction

AX5 Aluminum Structure	Satellite Ready	(2) 30 lb. LP Bottles	Swing-Out Grab Handle
Radius Entry Door	TV Antenna with Booster	30 lb. LP Bottle Cover	Awning
Roof Vent	Outside Security Light	Stabilizer Jacks	Walk-On Roof
Cable TV Hook Up	Fome-Core Insulation	Enclosed Underbelly	13.5M BTU A/C
Dual 5200 Lb. Str. Axles			

Interior

Bedsprad	Mini Blinds	13.5 Ducted Air Conditioner
Carbon Monoxide Detector	Valances with Curtains	Microwave
(2) Shirt Wardrobe	Wallpaper Border	Skylight Over Tub
Double Door Dometic Gas/Elec Refrig.	Conventional Oven with Piezo Ignition	6-Gallon DSI Gas/Electric Water Heater
Shower with Tub Surround	Water Heater By-Pass	AM/FM/CD Player
LP Leak Detector		

Optional Equipment

Swivel Rocker	CSA	Roof Ladder	Tinted Safety Glass
Outside Shower	15.0M BTU A/C (Upgrade)	Range Cover	TV Shelf with Electrical Jack in Bedroom
Hide A Bed (Most Models)	Spare Tire, Carrier and Cover	Sink Cover	Sliding Patio Door (312 BHDS Model Only)
Gel Coat Fiberglass Ext. Sidewalls	12 Volt Power Awning	2nd Entrance Door (312 BHDS Model Only)	

For more, see your Sunset Creek dealer for details. Standards, options and specifications are subject to change.

FEATURES



■ Extra large, pass-through storage is standard on most floorplans. This finished compartment is lockable.



■ Angled, stylish overhead cabinetry shown. Our cabinets offer Lumber Cor stiles and screwed, not stapled frames.



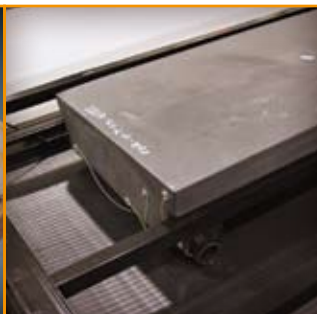
■ Other brands come with cheap plastic toilets. Sunset Creeks have porcelain foot-flush toilets standard!



■ Bathrooms feature tub surround, skylight, power vent and glass shower door.



■ All Sunset Creek cabinet frames are screwed together. This provides a stronger product than stapling.



■ Heated and enclosed holding tanks are standard. They're optional or not even offered on most other brands.



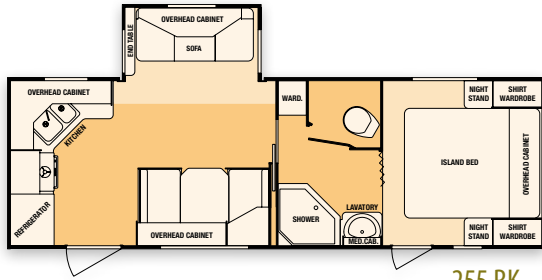
■ Super lube axles are higher quality than most. They feature lower maintenance and more durability.



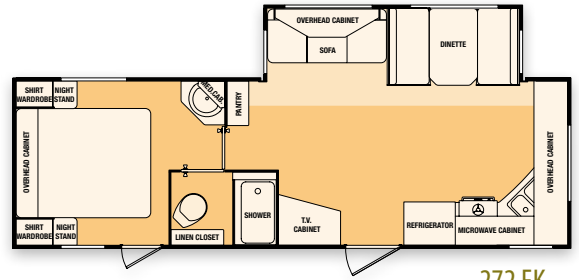
■ Along with R-7 insulation, we give you, at no extra charge, quality Fome Cor insulation for a cozier trailer.

FLOORPLANS

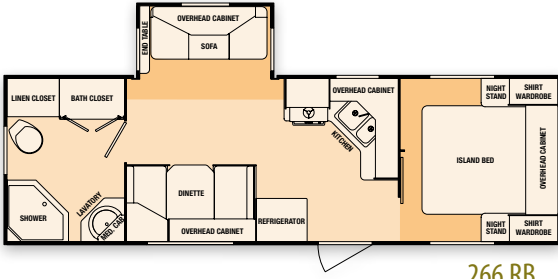
Travel Trailers



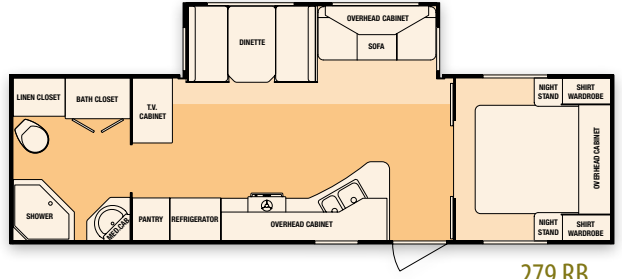
255 RK



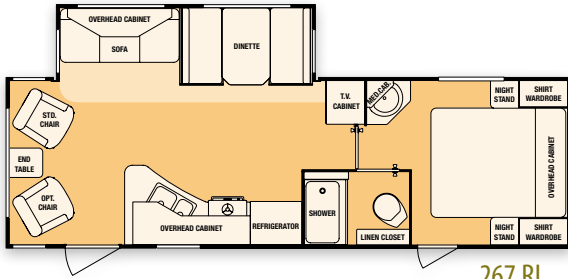
272 FK



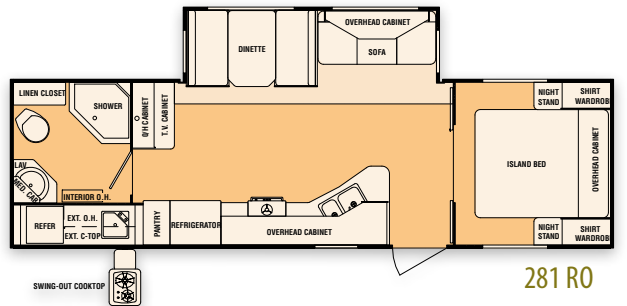
266 RB



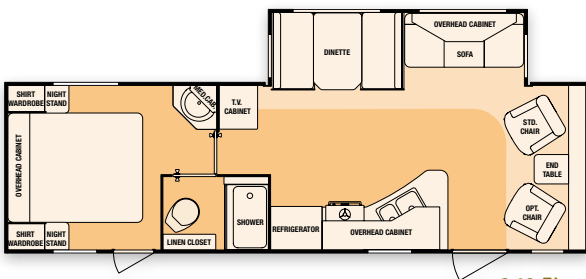
279 RB



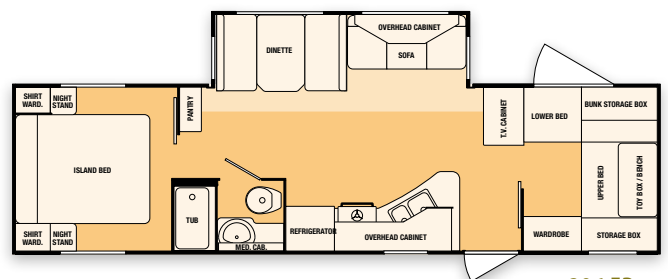
267 RL



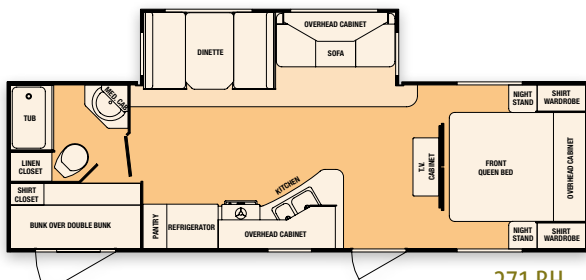
281 R0



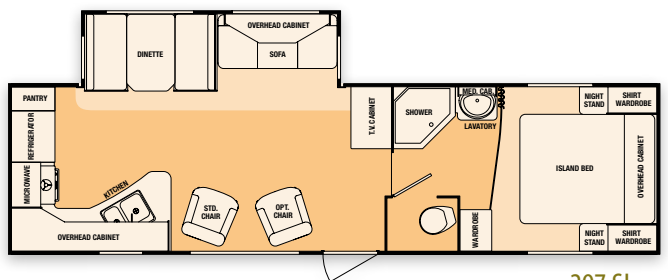
268 FL



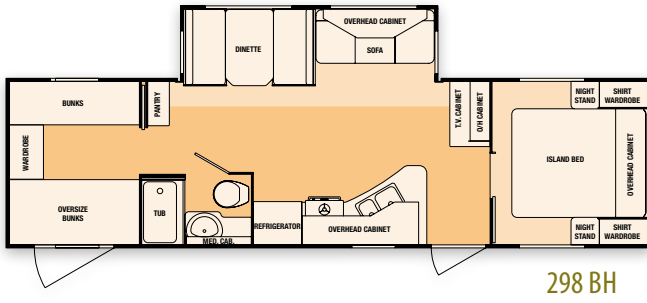
296 FB



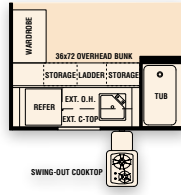
271 BH



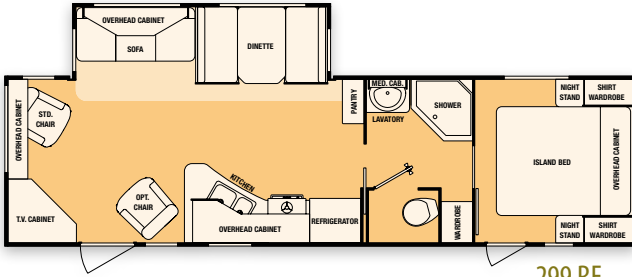
297 SL



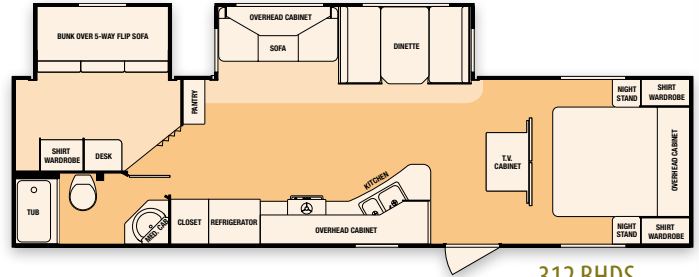
298 BH



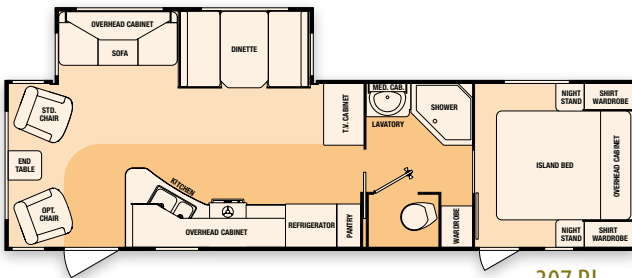
◀ Outside Kitchen Option



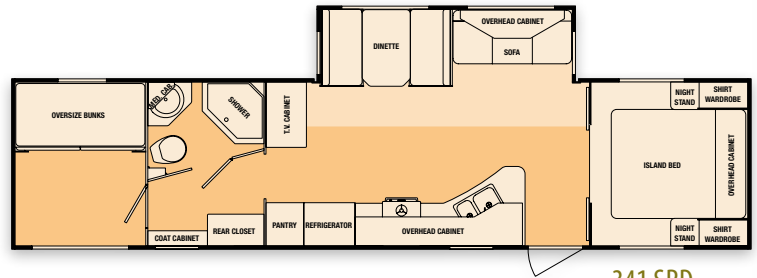
299 RE



312 BHDS



307 RL



341 SRD

S P E C I F I C A T I O N S

Model	Measurements					Capacities							Features		
	Exterior Length*	Exterior Height**	Exterior Width	Interior Height	Hitch Height	Dry Hitch Weight/Lbs.***	Dry Gross Weight/Lbs.***	GVWR/Lbs.	Fresh Water Cap./Gal.	Black Water Cap./Gal.	Gray Water Cap./Gal.	Sleeping Cap.	Tire Size	Awning Size	Furnace Size
255 RK	28' 5"	10' 8"	8' 0"	6' 5"	21-1/2"	760	5780	10000	56	41	76	6	ST225/75D15D	19'	25M BTU
266 RB	28' 5"	10' 8"	8' 0"	6' 5"	21-1/2"	702	5639	10000	56	41	76	6	ST225/75D15D	19'	25M BTU
267 RL	29' 8"	10' 8"	8' 0"	6' 5"	21-1/2"	756	5997	10000	56	41	41	6	ST225/75D15D	20'	30M BTU
268 FL	30' 8"	10' 8"	8' 0"	6' 5"	21-1/2"	1017	6149	10000	56	41	41	6	ST225/75D15D	16'	30M BTU
271 BH	29' 8"	10' 8"	8' 0"	6' 5"	21-1/2"	830	6070	10000	56	41	41	8	ST225/75D15D	20'	30M BTU
272 FK	29' 6"	10' 8"	8' 0"	6' 5"	21-1/2"	714	6035	10000	56	41	69	6	ST225/75D15D	19'	30M BTU
279 RB	31' 10"	10' 8"	8' 0"	6' 5"	21-1/2"	875	6324	10000	56	41	41	6	ST225/75D15D	20'	30M BTU
281 RO	31' 10"	10' 8"	8' 0"	6' 5"	21-1/2"	TBD	TBD	10000	56	41	41	6	ST225/75D15D	17'	30M BTU
296 FB	33' 7"	10' 8"	8' 0"	6' 5"	21-1/2"	866	6509	10000	56	41	41	10	ST225/75D15D	20'	30M BTU
297 SL	33' 8"	10' 8"	8' 0"	6' 5"	21-1/2"	820	6366	10000	56	41	76	6	ST225/75D15D	17'	30M BTU
298 BH	33' 6"	10' 8"	8' 0"	6' 5"	21-1/2"	902	6615	10000	56	41	41	10	ST225/75D15D	20'	30M BTU
299 RE	32' 10"	10' 10"	8' 0"	6' 5"	21-1/2"	971	6379	10000	56	41	41	6	ST225/75D15D	20'	30M BTU
307 RL	32' 10"	10' 10"	8' 0"	6' 5"	21-1/2"	861	6549	10000	56	41	41	6	ST225/75D15D	17'	30M BTU
312 BHDS	34' 11"	10' 10"	8' 0"	6' 5"	21-1/2"	931	7199	10000	56	41	76	9	ST225/75D15D	20'	35M BTU
341 SRD	37' 10"	10' 8"	8' 0"	6' 5"	21-1/2"	1080	7299	10000	56	35	41	8	ST225/75D15D	19'	34M BTU

*From center of coupler to rear bumper **Includes AC on roof ***Not including options

B E T T E R B Y D E S I G N

Lasting Value? You Bet

We set the standard high. That's why we created and developed the AX5 aluminum-framed construction. This ultra-light structure means a smoother ride, less gas consumption, and a stronger body. If you look closer, you'll see other brands use minimal aluminum framing with far less structural support. SunnyBrook RV pioneered the aluminum Superstructure over 16 years ago because we care about quality. So if you're looking for the best built trailers in this market, see what's under the surface. Sunset Creek is the leader in value!



SUNSET CREEK

by SunnyBrook

SunnyBrook RV, Inc.

201 14th Street | P.O. Box 2001 | Middlebury, IN 46540 | (574) 825-5250

www.sunnybrookrv.com

your SunnyBrook RV Dealer:

Tow Vehicle Disclaimer. CAUTION: Owners of SunnyBrook RV, Inc. recreational vehicles are solely responsible for the selection and proper use of tow vehicles. All customers should consult with a motor vehicle manufacturer or their dealer concerning the purchase and use of suitable tow vehicles for SunnyBrook RV, Inc. products. SunnyBrook RV, Inc. disclaims any liability or damages suffered as a result of the selection, operation, use or misuse of a tow vehicle. SUNNYBROOK RV INC.'S LIMITED WARRANTY DOES NOT COVER DAMAGE TO THE RECREATIONAL VEHICLE OR THE TOW VEHICLE AS A RESULT OF THE SELECTION, OPERATION, USE OR MISUSE OF THE TOW VEHICLE.

All illustrations and specifications contained in this literature are based on the latest product information available at the time of printing. SunnyBrook RV, Inc. reserves the right to make changes to colors, materials, specifications and pricing without notice or obligation. Photography may show optional equipment available at an additional cost. Items used as props in photography are not part of the packages. All liquid capacities and weights are approximate and dimensions are nominal. SunnyBrook reserves the right to make changes and improvements without incorporating these changes into similar models produced at an earlier date. Consult your local, authorized Bristol Bay or SunnyBrook dealer for the latest information and changes. SunnyBrook RV, inc. continues to be a member in good standing of the RVIA.