

SURVEYOR

By Forest River

Eco-Lite Edition

DISCOVER THE WORLD OUTSIDE



TRA Certified **GREEN** Capable Manufacturer
Surveyor has been certified as a **GREEN** Capable Manufacturer. TRA Certification's evaluation of their quality system, production process, material usage, recycling & environmental practices has earned them this distinction.



STRONG, DURABLE LAMINATED FIBERGLASS WITH ALL ALUMINUM CAGE CONSTRUCTION

SURVEYOR

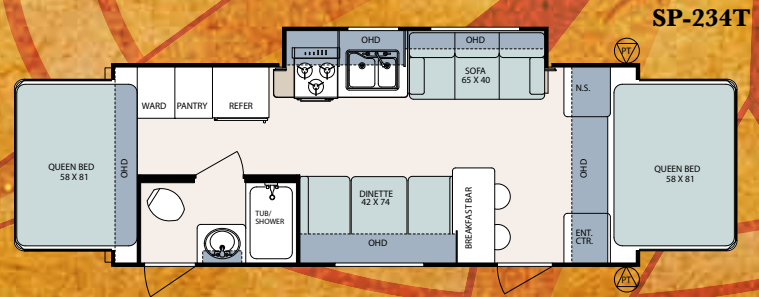
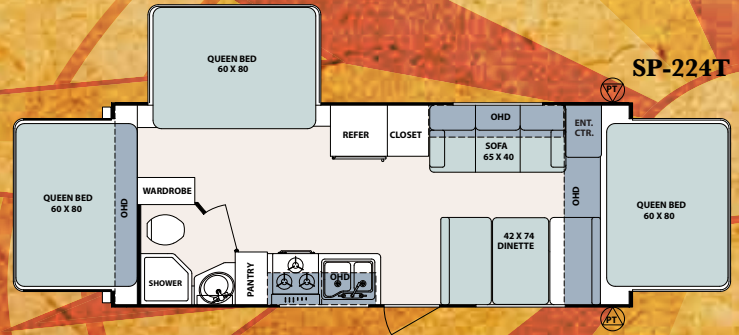
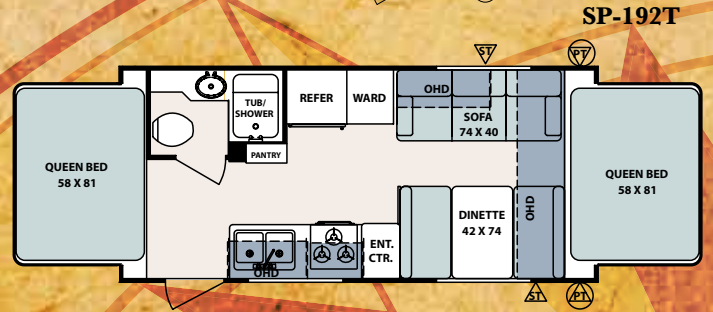
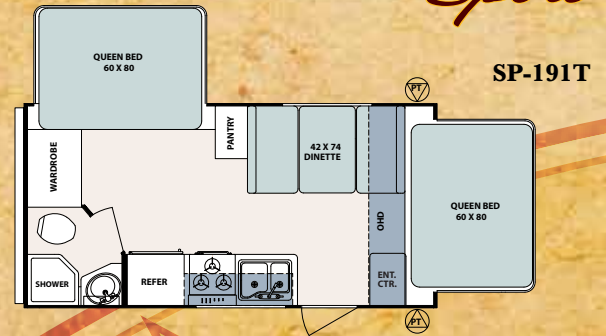
Eco-Lite Edition By Forest River

Sport

SP-293-Earth Interior

SP-293-Earth Interior

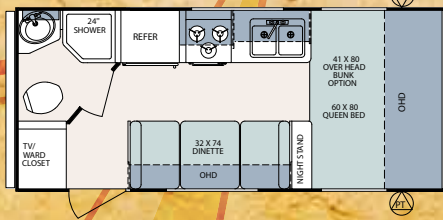
SP-295 Outside Kitchen With STD Table and Grill



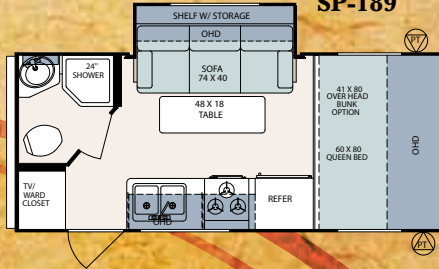
| | SP-186 | SP-189 | SP-191T | SP-192T | SP-224T | SP-230 | SP-234T | SP-275 | SP-280 | SP-293 | SP-295 |
|-----------------------------|--------|--------|---------|---------|---------|--------|---------|--------|--------|--------|--------|
| *TOTAL DRY WEIGHT | 2685 | 2964 | TBD | 3237 | TBD | 3429 | 3836 | 3985 | 4142 | 4587 | 5034 |
| LOAD CAPACITY | 2176 | 1964 | TBD | 3788 | TBD | 1615 | 3194 | 3015 | 2899 | 2533 | 2423 |
| HITCH WEIGHT | 235 | 302 | TBD | 361 | TBD | 380 | 366 | 418 | 415 | 494 | 457 |
| OVERALL LENGTH (Closed) | 20'2" | 20'6" | 20'4" | 21'11" | 24'7" | 25'7" | 25'0" | 28'9" | 30'7" | 33'0" | 33'2" |
| OVERALL LENGTH (Open) | N/A | N/A | 20'4" | 24'9" | 28'1" | N/A | 27'9" | N/A | N/A | N/A | N/A |
| EXTERIOR WIDTH | 7'0" | 7'0" | 8'0" | 8'0" | 8'0" | 8'0" | 8'0" | 8'0" | 8'0" | 8'0" | 8'0" |
| EXTERIOR HEIGHT (roof edge) | 8'7" | 8'7" | 8'7" | 8'7" | 8'7" | 8'7" | 8'7" | 8'7" | 8'7" | 8'8" | 8'8" |
| FRESH WATER (gal.) | 36 | 36 | 36 | 36 | 36 | 36 | 36 | 36 | 36 | 36 | 36 |
| GREY WATER (gal.) | 30 | 30 | 30 | 30 | 30 | 30 | 30 | 30 | 30 | 30 | 30 |
| BLACK WATER (gal.) | 30 | 30 | 30 | 30 | 30 | 30 | 30 | 30 | 30 | 30 | 30 |
| TIRE SIZE: 205/75/R14 | STD | STD | STD | STD | STD | STD | STD | STD | STD | STD | STD |

SPORT TRAILERS

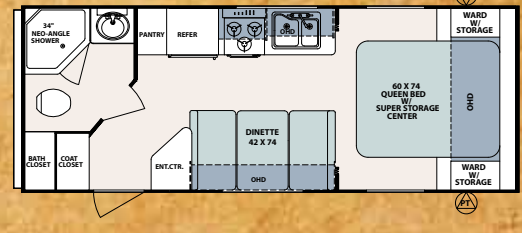
SP-186



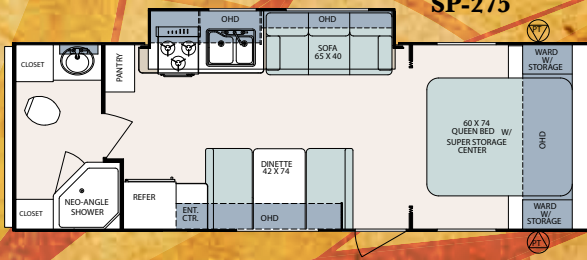
SP-189



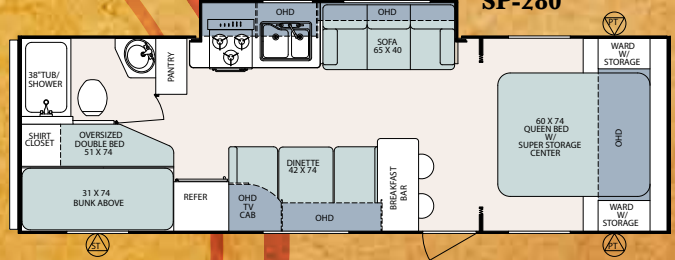
SP-230



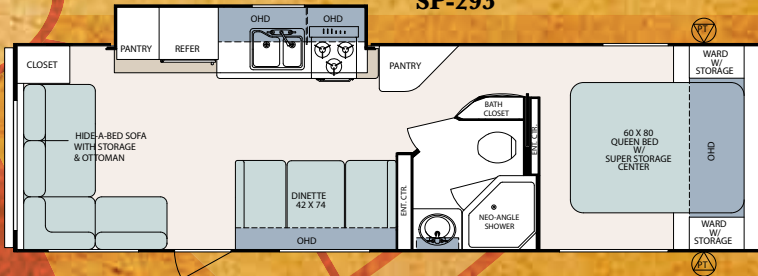
SP-275



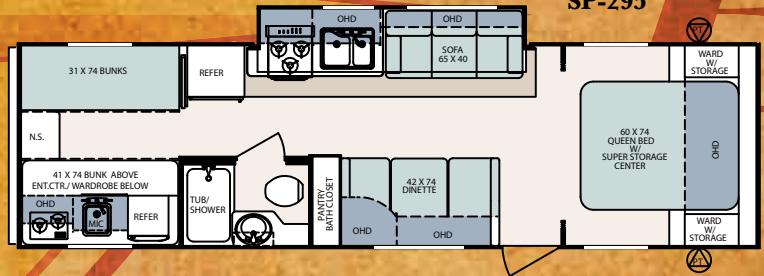
SP-280



SP-293



SP-295



ST=Storage PT= Pass Thru Storage

SURVEYOR SPORT ADVANTAGES

- Aluminum framing around all openings
- Full walk on roof
- 30 lb. LP bottles w/ cover
- 4" square bumper
- Tinted safety glass
- 78" interior height
- Double steps
- Detachable power cord
- 80 lb. gas struts (queen bed)
- Wood medicine cabinet
- 55 amp power converter
- Wood kitchen drawers w/ metal glides
- Spring loaded recessed hidden hinges
- Raised panel cabinet doors (uppers & lowers)
- Skylight in tub/shower

Surveyor Sport combines luxury and affordability for today's family. Surveyor interiors include upgrades throughout to make your travels more like home. You will enjoy large galleys, spacious cabinetry, and plush durable furniture.

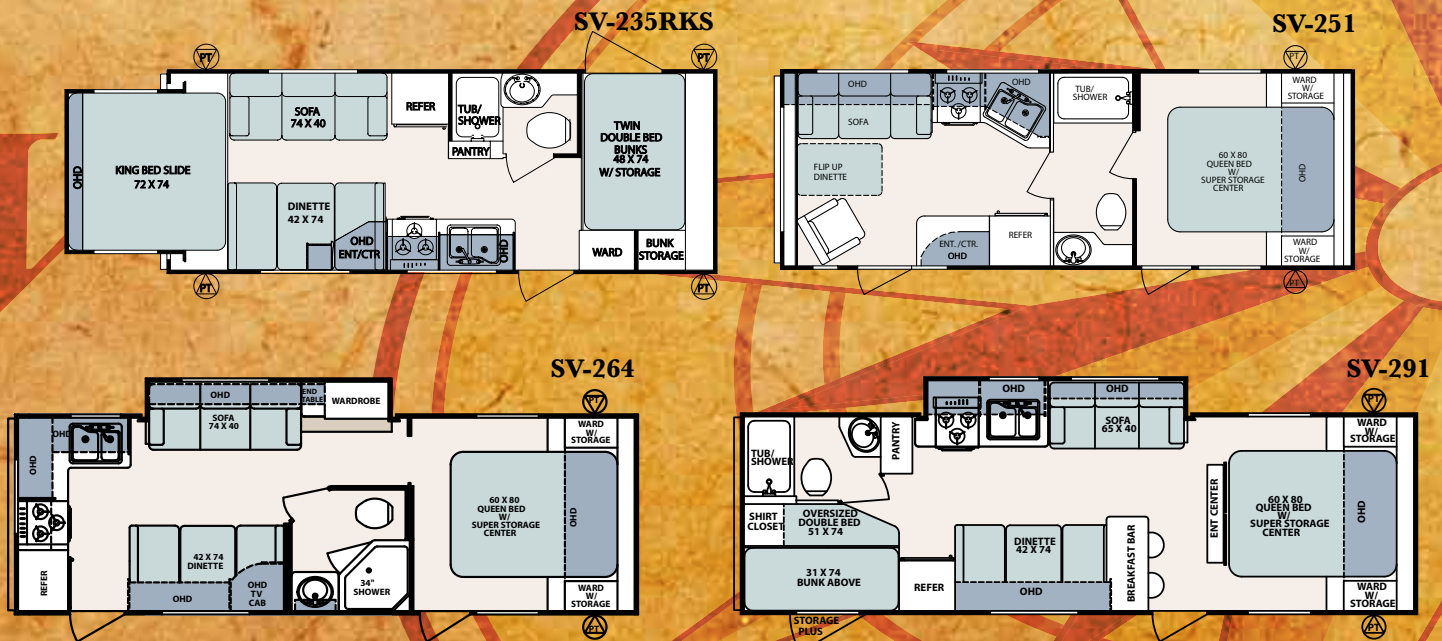


SP-295-Saffron Interior



THE TRAILER MOST TRAVELED

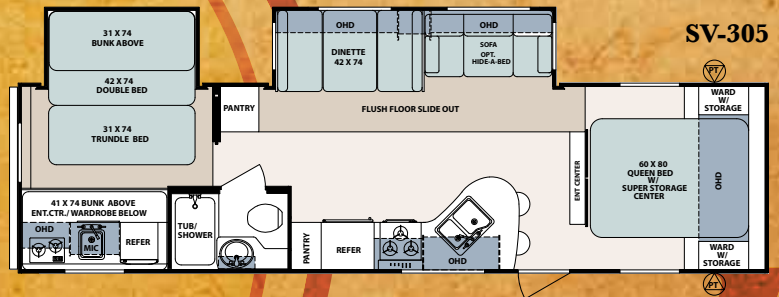
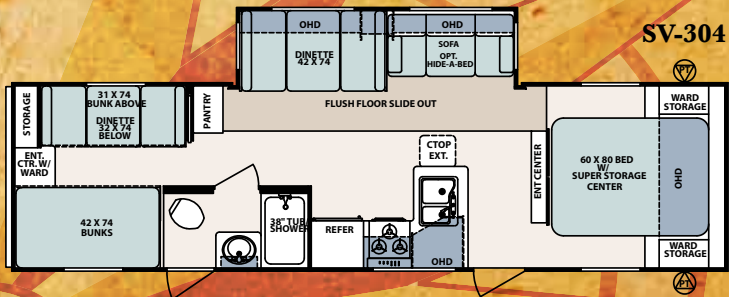
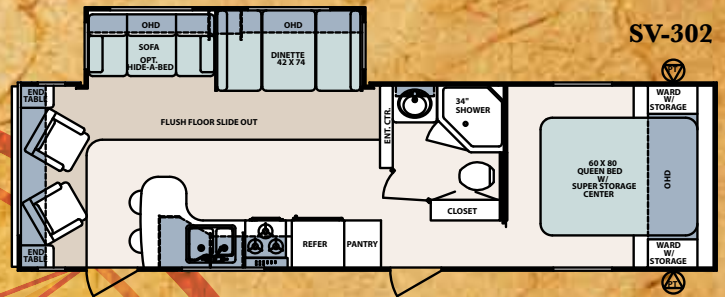
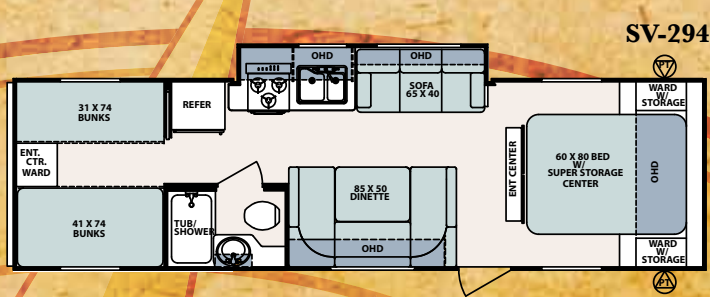
Surveyor's aerodynamic exterior design, streamlined front end, lower center of gravity, independent torsion axles and enclosed underbelly, substantially reduces air turbulence and increases stability during travel.



| | SV-235RKS | SV-251 | SV-264 | SV-291 | SV-294 | SV-302 | SV-304 | SV-305 |
|-----------------------------|-----------|--------|--------|--------|--------|--------|--------|--------|
| *TOTAL DRY WEIGHT | 3335 | 3760 | 4308 | 4423 | 4673 | 5821 | 5933 | TBD |
| LOAD CAPACITY | 1470 | 1215 | 2698 | 2587 | 2399 | 3013 | 2969 | TBD |
| HITCH WEIGHT | 280 | 450 | 481 | 440 | 547 | 709 | 777 | TBD |
| OVERALL LENGTH (closed) | 23'11" | 27'1" | 29'0" | 31'0" | 33'0" | 33'7" | 34'3" | 35'7" |
| OVERALL LENGTH (open) | N/A | N/A | N/A | N/A | N/A | N/A | N/A | N/A |
| EXTERIOR WIDTH | 8'0" | 8'0" | 8'0" | 8'0" | 8'0" | 8'0" | 8'0" | 8'0" |
| EXTERIOR HEIGHT (roof edge) | 8'6" | 8'8" | 8'8" | 8'8" | 8'8" | 9'6" | 9'6" | 9'6" |
| FRESH WATER (gal.) | 36 | 36 | 36 | 36 | 36 | 36 | 36 | 36 |
| GREY WATER (gal.) | 30 | 30 | 60 | 30 | 30 | 30 | 30 | 30 |
| BLACK WATER (gal.) | 30 | 30 | 30 | 30 | 30 | 30 | 30 | 30 |
| TIRE SIZE: 205/75/R14 | STD | STD | STD | STD | STD | N/A | N/A | N/A |
| TIRE SIZE: 225/75/R15 | N/A | N/A | N/A | N/A | N/A | STD | STD | STD |

SURVEYOR

Eco-Lite Edition By Forest River



ST=Storage PT= Pass Thru Storage

Luxury is well within your reach in this extraordinary Surveyor travel trailer. Beautiful residential style cabinetry and kitchen, raised panel cabinet doors, spacious pantry, plus the large entertainment center makes this a great choice for affordable elegance.



SV302-Cinnamon Interior

SURVEYOR STANDARDS

APPLIANCES/EQUIPMENT

- Color-coded water lines
- Copper gas lines, double flared
- Dometic, flush-mount refrigerator
- Deep double-bowl kitchen sink w/ high rise faucet
- Power range hood w/ light
- Six gallon gas/electric DSI water heater (DSI optional Sport models)
- Three burner range top
- 20,000 BTU furnace (ducted 23 - 26)
- 30,000 BTU ducted furnace (27 and above)

BATH

- Fiberglass tub/shower
- Adjustable shower head/faucet
- Lavatory sink and faucet
- Wood medicine cabinet w/ mirror
- Shower curtain with tieback
- Thetford commode with foot flush
- Skylight in tub/shower
- Monitor panel

CONSTRUCTION

- Welded, aluminum framed, laminated roof w/ 3" block foam insulation (R14) & ducted A/C (25' and above travel trailers, N/A SP275 & SP280)
- Welded, aluminum framed, laminated roof w/ 1-1/2" block foam insulation (R9) (24' and below travel trailers, SP275 & SP280)
- Welded, aluminum cage constructed, laminated 2" wall w/ 1-1/2" block foam insulation (R9)
- Welded, aluminum framed, laminated floor w/ 1-1/2" block foam insulation (R9)
- Electric powered slide-out mechanism
- Electric powered rear slide-out mechanism w/ 1000# capacity

ELECTRICAL

- Detachable 28', 30-amp power cord
- 55 amp converter with charger
- Exterior 120 volt recept
- Patio light with amber lens

- 12-volt interior lighting
- 120-volt GFI protected circuit safety

EXPANDABLE BEDS

- Vinyl weathershield tent(s)
- Automotive rubber gasket and compression latches
- Decorative bunk cushions
- Radius door w/ hinge
- 1000 lb. capacity

SAFETY

- Breakaway switch
- Fire extinguisher
- LP detector
- Smoke detector
- Ground fault protected electrical circuit(s)
- Dead-bolt door lock
- Safety chains
- Multiple egress windows
- CO₂ detector
- Tinted safety glass

EXTERIOR

- Rubber roof w/ 12 year warranty
- Lamilux super 1000 fiberglass skin w/ 2 year warranty
- Radius corner windows
- Butyl tape sealant on seams
- Combination entrance/screen door w/ dead-bolt lock
- Outside storage compartment(s) w/ rubber D-seal
- Self-storing double step(s)
- Designer exterior graphics
- 30# LP tanks
- Heated enclosed underbelly 23' & above (N/A Sport)
- Drip rails and down spout

INTERIOR

- Knife block behind stove
- Panoramic galley window
- Valances with mini-blinds

- No-wax seamless vinyl flooring
- Solid lumber core cabinet fronts assembled w/ screws
- Residential style cabinet doors w/ concealed hinges
- Reversible dinette and bunk cushions
- Power range hood with light
- Residential style wood drawers w/ metal glides
- In-floor heat ducts 23' & above (N/A Sport)
- 78" interior height
- Decorative oval wall clock (N/A Sport)
- 80# gas bed struts (queen beds)
- Adjustable shelves in pantry (where applicable)
- Message center w/ key hooks (N/A Sport)

PLUMBING

- Rotocast holding tanks, underfloor
- Rotocast fresh water tank, underfloor
- Demand waterpump, 12-volt
- City water fill
- Gravity water fill
- Water heater bypass kit
- Winterization kit

RUNNING GEAR

- Super-lube hubs
- Galvanized steel wheel wells
- Independent torsion suspension system (leaf springs sport models)
- Radial trailer tires
- Electric brakes, all wheels
- Tough, powder coated frame
- 2-5/16" coupler



SURVEYOR

COMPETITION



SURVEYOR SIDEWALL

Your Surveyor is constructed with 1.5" tubular aluminum framing in "all" openings. Is this necessary - we think so! Aluminum framed openings add strength and integrity to every Surveyor sidewall. No other lightweight trailer compares.

SURVEYOR ADVANTAGES

- Aluminum framing around all openings
- 2" thick sidewalls
- Independent torsion axles
- Heated and enclosed underbelly
- Full walk on roof
- 78" interior height
- Gas/electric DSI water heater
- 30 lb. LP bottles w/ cover
- 4" square bumper
- Water filtration system
- Fantastic fan
- Detachable power cord
- 60" x 80" queen beds
- Tinted safety glass
- Outside shower

FOREST RIVER ENCOURAGES YOU TO BUY LOCALLY

Forest River, Inc. strongly encourages our retail customers to purchase from their local dealership whenever possible due to the following factors:

- Our Dealers are, as a rule, independently owned and operated businesses. Outside of those customers they personally sold products to, they are not contractually obligated to perform warranty service on Forest River products that were purchased elsewhere. There may be an occasion that you would be required to return to the point of purchase to satisfy warranty requirements.
- Although many dealerships will eventually service products not purchased at their place of business, they will usually take care of their customers and other Forest River customers who are traveling away from their local dealer as they would their own.
- Local purchases allow a customer to establish a relationship with a dealer close to home. This relationship provides the customer with a convenient location for service and support from a "home town" professional.
- The opportunity for a thorough PDI (Pre Delivery Inspection) and product orientation is an additional benefit of buying from your local dealer. Further providing the opportunity for refresher courses or the ability to get questions answered much more conveniently.
- For our Canadian customers, there are also requirements which must be met to bring an RV purchased out of the country to their home. Although not insurmountable, these requirements may involve such things as additional inspections and certifications, taxes and fees. Your local Canadian Dealer is a professional at meeting these requirements.
- Forest River's goal is for all RV owners to fully enjoy their RV experience. In light of this goal, and considering the advantages of buying local, we encourage you to be thorough when determining what product to purchase and which dealer to purchase it from as both are key to your ultimate satisfaction and the realization of your dreams.

SURVEYOR OPTIONS

OPTIONS: APPROXIMATE WEIGHT

| | |
|--|---------|
| Air conditioner, 15,000 BTU IP0 13,500 | 2 lbs |
| Gas oven (Sport) | 38 lbs |
| Outside stereo speakers (2) | 5 lbs |
| 26" flat screen TV | 26 lbs |
| 19" flat screen TV | 15 lbs |
| Outside grill | 15 lbs |
| Raised panel refrigerator door inserts | 18 lbs |
| Axle riser (select models, N/A Sport) | 10 lbs |
| Day/nite shades | 0 lbs |
| Aluminum spoked rims | 0 lbs |
| Hide-a-bed sofa (select models) | 35 lbs |
| Free standing dinette w/4 chairs (flush floor slides) | 0 lbs |
| Power tongue jack | 10 lbs |
| Roof ladder (N/A -exp. & rear slide-out models) | 15 lbs |
| Slide-out awning topper | 35 lbs |
| 41" folding bunk bed (SP-186 & SP-189) | 129 lbs |
| Exterior assist grab handle | 2 lbs |
| Gas/electric water heater | 2 lbs |

FOREST RIVER ADVANTAGE

- Fantastic fan in bath
- Water filtration system (entire unit)
(N/A Sport models)

GENERAL WARRANTY INFORMATION

Warranty - Among the best in the industry.
See your local Surveyor dealer for details

SURVEYOR SPORT OPTIONS

Interior Luxury Package: Approx. wt. 90 lbs
C/D-DVD stereo w/ 2 speakers, 6 gallon G/E water heater, tub surround, 3 burner cooktop, microwave and double door refrigerator.

Exterior Luxury Package: Approx. wt. 246 lbs
A & E awning, 13,500 BTU air conditioner, 30 # LP bottles w/ cover, spare tire/carrier and cover, stabilizer jacks, TV antenna w/ cable-satellite hookup, and double step

SURVEYOR TRAVEL TRAILER OPTIONS

Interior Luxury Package: Approx. wt. 208 lbs
Stove cover, CD-DVD stereo w/remote control & 4 speakers, water filtration system, 3 speed Fantastic Fan, 6 gallon G/E DSI water heater, gas oven, sink covers (2), tub surround, microwave, double door refrigerator

Exterior Luxury Package: Approx. wt. 267 lbs
A&E awning, 13,500 BTU air conditioner, battery box, 30# LP bottles w/cover, spare tire/carrier & cover, outside shower, stabilizer jacks, TV antenna w/cable-satellite hookup

SURVEYOR COLORS



Cinnamon



Earth



Saffron

You'll be impressed with the spaciousness of the Surveyor bath, complimented with a large lavatory sink, wood medicine cabinet, foot flush toilet, and skylight for natural lighting.



SURVEYOR TOWING

The tow ratings listed below are the highest available for the respective models listed. Certain optional equipment may be required and other restrictions may apply. See your automotive dealer for more information.

| | Engine | Max | | Engine | Max | | Engine | Max |
|--------------------------------------|----------|-------|------------------------------|-------------|-------|--------------------------------|----------|-----------|
| ACURA | | | Explorer (2WD) | 4.6L V-8 | 7,310 | ML 350 | 3.2LV6 | 5,000 |
| MDX | 3.5L V-6 | 5,000 | Explorer (4WD) | 4.6L V-8 | 7,130 | ML 500 | V-8 | 5,000 |
| AM GENERAL | | | Sport Trac (2WD) | 4.6L V-8 | 7,160 | MITSUBISHI | | |
| H1 4 dr Open Top | 6.6LTD | 9,303 | Sport Trac (4WD) | 4.6L V-8 | 7,000 | Endeavor | 3.8L V-6 | 3,500 |
| H1 4 dr Wagon | 6.6LTD | 9,036 | F-150 Reg. Cab (2WD) | 5.4L V-8 | 8,500 | NISSAN | | |
| H2 | 6.0LV-8 | 6,700 | F-150 Reg. Cab (4WD) | 5.4L V-8 | 8,200 | Armada (2WD) | 5.6L V-8 | 9,100 |
| H2 SUT | 6.0LV-8 | 6,600 | F-150 Super Crew (2WD) | 5.4L V-8 | 9,500 | Armada (4WD) | 5.6L V-8 | 9,000 |
| H3 | 3.5LI-5 | 4,500 | F-150 Super Crew (4WD) | 5.4L V-8 | 9,200 | Frontier KC XE (2WD) | 2.5L I-4 | 3,500 |
| H3 | 3.7L I-5 | 4,500 | Ranger Reg. Cab 7' Bed (2WD) | 4.0L V-6 | 6,000 | Frontier KC SE, LE NISMO (2WD) | 4.0L V-6 | 6,500 |
| H3 Alpha | 5.3L V-8 | 6,000 | Ranger Reg. Cab 7' Bed (4WD) | 4.0L V-6 | 5,680 | Frontier KC SE, LE NISMO (4WD) | 4.0L V-6 | 6,300 |
| BMW | | | HONDA | | | Murano | 3.5L V-6 | 3,500 |
| X3 3.0si | 3.0L I-6 | 3,500 | Odyssey | 3.5L V-6 | 3,500 | Pathfinder | 4.0L V-6 | 6,000 |
| X5 3.0si | 3.0L I-6 | 6,000 | Pilot | 3.5L V-6 | 4,300 | Pathfinder | 5.6L V-8 | 7,000 |
| X5 4.8Li | 4.8L V-8 | 6,000 | Ridgeline | 3.5L V-6 | 5,000 | Quest | 3.5L V-6 | 3,500 |
| BUICK | | | HYUNDAI | | | Titan KC 2WD | 5.6L V-8 | 9,500 |
| Rendezvous | All | 3,500 | Entourage | 3.8L V-6 | 3,500 | Titan KC 4WD | 5.6L V-8 | 9,400 |
| Terraza | 3.9L V-6 | 3,500 | Veracruz (all) | 3.8L V-6 | 3,500 | Titan CC 2WD | 5.6L V-8 | 9,400 |
| Rainier(2WD) | 4.2L I-6 | 5,800 | INFINITI | | | Titan CC 4WD | 5.6L V-8 | 9,400 |
| Rainier(2WD) | 5.3L V-8 | 6,700 | QX56 (AWD) | 5.6L V-8 | 8,900 | Titan Longbed CC (2WD) | 5.6L V-8 | 9,300 |
| Rainier AWD | 4.2L I-6 | 5,600 | QX56 (2WD) | 5.6L V-8 | 9,000 | Titan Longbed CC (4WD) | 5.6L V-8 | 9,100 |
| Rainier AWD | 5.3L V-8 | 6,600 | FX | All | 3,500 | Xterra | 4.0L V-6 | 5,000 |
| Enclave | 3.6L V-6 | 4,500 | ISUZU | | | PONTIAC | | |
| CADILLAC | | | Ascender (2WD) | 4.2L I-6 | 5,300 | Torrent | 3.4L V-6 | 3,500 |
| Escalade 2WD | 6.2L V-8 | 8,000 | Ascender (4WD) | 4.2L I-6 | 5,200 | PORSCHE | | |
| Escalade AWD | 6.2L V-8 | 7,900 | i290 Ext Cab (2WD) | 2.9L I-4 | 3,200 | Cayenne | ALL | 7,716 |
| Escalade ESV | 6.2L V-8 | 7,400 | i370 Ext Cab (2WD) | 3.7L I-5 | 5,500 | SAAB | | |
| Escalade EXT | 6.2L V-8 | 7,400 | JEEP | | | 9-3 (ALL) | ALL | 3,500 |
| SRX | 3.6L V-6 | 4,250 | Commander (2WD) | 4.7L V-8 | 6,500 | 9-5 (ALL) | ALL | 3,500 |
| SRX | 4.6L V-8 | 4,250 | Commander (4WD) | 4.7L V-8 | 6,500 | 9-7X | 4.2L I-6 | 5,600 |
| CHEVROLET/GMC | | | Grand Cherokee (2WD) | 4.7L V-8 | 6,500 | 9-7X | 5.3L V-8 | 6,500 |
| Acadia | 3.6L V-6 | 4,500 | Grand Cherokee (4WD) | 4.7L V-8 | 6,500 | SATURN | | |
| Avalanche 1500 (2WD) | 5.3L V-8 | 8,200 | Grand Cherokee (2WD) | 5.7L V-8 | 7,400 | Outlook | 3.6L V-6 | 4,500 |
| Avalanche 1500 (4WD) | 5.3L V-8 | 7,900 | Grand Cherokee (4WD) | 5.7L V-8 | 7,200 | Vue XE | 3.5L V-6 | 3,500 |
| Colorado Ext. Cab (2WD) | 5.3L V-8 | 4,000 | Liberty (2WD) | 3.7L V-6 | 3,500 | Vue XR/Red Line | 3.6L V-6 | 3,500 |
| Colorado Ext. Cab (4WD) | 5.3L V-8 | 6,000 | Liberty (4WD) | 3.7L V-6 | 3,500 | SUBARU | | |
| Equinox | ALL | 3,500 | Wrangler Unlimited | 3.8L V-6 | 3,500 | B9 Tribeca | 3.6L H-6 | 3,500 |
| Express/Savana 1500 SWB | 4.3L V-6 | 4,400 | Wrangler Unlimited Rubicon | 3.8L V-6 | 3,500 | Outback | 3.0L H-6 | 3,000 |
| Express/Savana 1500 SWB | 5.3L V-8 | 6,700 | KIA | | | SUZUKI | | |
| Silverado/Sierra 1500 Reg. Cab (2WD) | 5.3L | | Sorento | 3.3L V-6 | 3,500 | Grand Vitara | 2.7L V-6 | 3,000 |
| V-8 | 8,200 | | Sorento | 3.8L V-6 | 5,000 | XL7 | 3.6L V-6 | 3,500 |
| Silverado/Sierra 1500 Reg. Cab (4WD) | 5.3L | | Sedona | 3.8L V-6 | 3,500 | TOYOTA | | |
| V-8 | 7,900 | | LAND ROVER | | | 4Runner (2WD) | 4.0L V-6 | 5,000 |
| Silverado/Sierra 1500 CC (2WD) | 5.3L V-8 | 7,600 | Land Rover LR2 | 3.2L I-6 | 3,500 | 4Runner (4WD) | 4.0L V-6 | 5,000 |
| Silverado/Sierra 1500 CC (4WD) | 5.3L V-8 | 7,500 | Land Rover LR3 | 4.4L V-8 | 7,716 | 4Runner (2WD) | 4.7L V-8 | 7,300 |
| Tahoe/Yukon (2WD) | 5.3L V-8 | 7,500 | Range Rover | 4.4L V-8 | 7,716 | 4Runner (4WD) | 4.7L V-8 | 7,000 |
| Tahoe/Yukon (4WD) | 5.3L V-8 | 7,200 | Range Rover Sport | 4.2L V-8 SC | 7,716 | FJ Cruiser | 4.0L V-6 | 5,000 |
| Yukon 2WD Hybrid | 6.0L V-8 | 6,200 | LEXUS | | | Highlander | 3.5L V-6 | 3,500 (t) |
| Suburban/Yukon XL (2WD) | 5.3L V-8 | 7,100 | RX 350 | 3.5L V-6 | 3,500 | Highlander Hybrid | 3.3L V-6 | 3,500 |
| Suburban/Yukon XL (4WD) | 5.3L V-8 | 7,000 | RX 400 (HYBRID) | 3.3L V-6 | 3,500 | Land Cruiser | 5.7L V-8 | 8,500 |
| Trailblazer/Envoy (2WD) | 5.3L V-8 | 6,800 | GX 470 | 4.7L V-8 | 6,500 | Sienna | 3.5L V-6 | 3,500 |
| Trailblazer/Envoy (4WD) | 5.3L V-8 | 6,600 | LX 570 | 5.7L V-8 | 8,500 | Sequoia (2WD) | 4.7L V-8 | 6,500 |
| CHRYSLER/DODGE | | | LINCOLN/MERCURY | | | Sequoia (4WD) | 4.7L V-8 | 6,200 |
| Aspen Limited (2WD) | 4.7L V-8 | 5,950 | Mariner | | | Tacoma Reg Cab | 2.7L I-4 | 3,500 |
| Aspen Limited (4WD) | 4.7L V-8 | 5,750 | Mountaineer (2WD) 5 PSGR | 4.0L V-6 | 5,295 | Tacoma Access Cab/ Xrunner | 2.7L I-4 | 3,500 |
| Dakota Ext. Cab (2WD) | 3.7L V-6 | 4,850 | Mountaineer (AWD) 5 PSGR | 4.0 L V-6 | 5,000 | Tacoma Access Cab (2WD/4WD) | 4.0L V-6 | 5,000 |
| Dakota Ext. Cab (4WD) | 3.7L V-6 | 4,650 | Mountaineer (2WD) 7 PSGR | 4.6L V-8 | 7,135 | Tacoma Dbl Cab (2WD/4WD) | 4.0L V-6 | 5,000 |
| Dakota CC (2WD) | 3.7L V-6 | 4,750 | Mountaineer (AWD) 7 PSGR | 4.6L V-8 | 6,970 | Tundra Reg Cab SB | 4.7L V-8 | 5,100 |
| Dakota CC (4WD) | 3.7L V-6 | 4,600 | MAZDA | | | Tundra Reg Cab LB | 4.7L V-8 | 5,000 |
| Durango (2WD) | 4.7L V-8 | 6,050 | OUTLANDER (4WD) | 3.0L V-6 | 3,500 | Tundra Double Cab SB (2WD) | 4.7L V-8 | 7,000 |
| Durango (4WD) | 4.7L V-8 | 5,900 | ENDEAVOR | 3.8L V-6 | 3,500 | Tundra Double Cab LB (2WD) | 4.7L V-8 | 6,900 |
| Durango (2WD) | 5.7L V-8 | 7,400 | RAIDER EXT CAB (2WD) | 3.7L V-6 | 4,150 | Tundra Double Cab SB (4WD) | 4.7L V-8 | 6,700 |
| Durango (4WD) | 5.7L V-8 | 7,200 | RAIDER EXT CAB (2WD) | 4.7L V-8 | 6,450 | Tundra Double Cab LB (4WD) | 4.7L V-8 | 6,600 |
| Grand Caravan | 3.8L V-6 | 3,600 | RAIDER DBL CAB (2WD) | 3.7L V-6 | 4,050 | Tundra Reg Cab (2WD) | 5.7L V-8 | 10,800 |
| Ram 1500 Reg. Cab (2WD) | 5.7L V-8 | 9,100 | RAIDER DBL CAB (2WD) | 4.7L V-8 | 6,350 | Tundra Reg Cab (4WD) | 5.7L V-8 | 10,500 |
| Ram 1500 Reg. Cab (4WD) | 5.7L V-8 | 8,900 | RAIDER EXT CAB (4WD) | 3.7L V-6 | 3,950 | Tundra Double Cab (2WD) | 5.7L V-8 | 10,600 |
| Ram 1500 QC (2WD) | 5.7L V-8 | 8,750 | RAIDER EXT CAB (4WD) | 4.7L V-8 | 5,250 | Tundra Double Cab (4WD) | 5.7L V-8 | 10,300 |
| Ram 1500 QC (4WD) | 5.7L V-8 | 8,500 | RAIDER DBL CAB (4WD) | 4.7L V-8 | 6,100 | Tundra Crewmax (2WD) | 5.7L V-8 | 10,400 |
| Town and Country | 3.8L V-6 | 3,600 | MERCEDES-BENZ | | | Tundra Crewmax (4WD) | 5.7L V-8 | 10,100 |
| FORD | | | G500 | V-8 | 7,000 | VOLKSWAGEN | | |
| E-150 Van | 4.6L V-8 | 6,500 | G55 AMG | V-8 | 7,000 | Touareg(4WD) | All | 7,716 |
| E-150 Van | 5.4L V-8 | 7,500 | VOLVO | | | VOLVO | | |
| Edge | 3.5L V-6 | 3,500 | XC 90 | All | 5,000 | | | |
| Escape | 3.0L V-6 | 3,500 | | | | | | |
| Expedition (2WD) | 5.4L V-8 | 9,200 | | | | | | |
| Expedition (4WD) | 5.4L V-8 | 9,000 | | | | | | |

SURVEYOR
The Best Solution



Forest River Inc., 2405 Century Drive Goshen, IN 46528
www.forestriverinc.com, www.forestriveraccessories.com
Ph. 574.642.3119

As Surveyor constantly strives to improve our product, all specifications listed in this informative brochure are subject to change without notice or obligation. Photos may show optional equipment which is not included in the purchase price of the unit. Review a current model on your dealer's lot today. PIP 041808