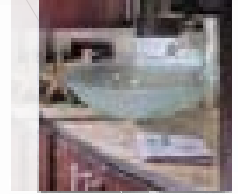
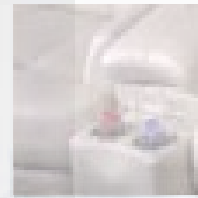


# PRISM



COACHMEN 2009 PRISM MOTORHOME

# PRISM



Looking for luxurious, Class A inspired motorhome living in a smaller package? You'll find it all in the new Prism by Coachmen. Its curvaceous design, prestigious appointments and painstaking attention to detail speak to its avant-garde styling and smart designs. Built on the Sprinter chassis and powered by a Mercedes Benz engine, Prism gives you a combination of nimbleness, elegant simplicity and road performance you won't find in conventional coaches. The essence of easy living, Prism is easy to drive, easy on the pump — and easy on the eyes!

The flush-mount sink and range allow for more usable counter space.

Leather Euro chair with flip-up laptop tray makes it easy to work or relax in style.

## engineering

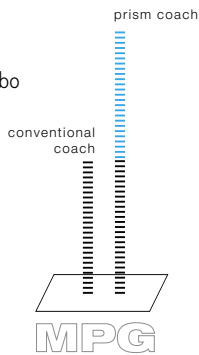


**SPACE PLANNING** — Like a prestige car or luxury yacht, Prism's interior is expertly designed to accommodate a collage of high-end, comfort-enhancing features in a smaller space.

**TURNING RADIUS** — A shorter wheel base and sharp wheel cut give Prism a handy, 54-foot turning radius. So you'll find it easy to turn around in confined spaces like parking lots.

**ENGINE** — The coach is powered by a powerful 3.0L Mercedes Benz diesel engine. German engineering and performance at its best!

**FUEL ECONOMY** — Due to its aerodynamic design and efficient turbo diesel engine, Prism gives you a fuel economy like that of an SUV. So you'll go further for less!



## smart designs

**FLOORING** — Beauflor® graces the coach with its warm, soft color and texture. Strong and durable, the flooring resists scratches, moisture and mildew. It cleans easily with mild soap and water, and its slip-resistant surface gives you an added measure of safety. Plus, the worry-free 10-year flooring manufacturer's warranty is your assurance of quality.

**REMOVABLE CARPET OPTION** — In place, the non-slip carpet adds comfort and safety to your living space. Yet, it's easy to remove, making cleaning hassle-free and adding flexibility if you want open floor space.

**NO-MESS™ TERMINATION SYSTEM** — We made sure every part of the Prism is designed to make life easier — even dumping the tanks. The No-Mess Termination System with its swivel boom make hose storage and dumping clean and simple.

In the bathroom, Prism's gracious design shows in features like the glass shower enclosure, frosted glass vessel sink and designer faucet.

## amenities

**STAINLESS STEEL ACCENTS** — From the range to the refrigerator, hardware to faucets, we integrated stainless steel throughout the interior. A perfect complement to Prism's simple elegance.

**ULTRA LEATHER UPHOLSTERY** — It should be no surprise that the sofas are hand-crafted with supple, soft touch fabrics like you'll find in fine furniture galleries.

**EURO CHAIR** — The flip-up laptop tray makes the euro chair an ideal spot for relaxing while you stay entertained and informed. Plus, the chair's lighter weight and streamline design make it easy to move around.

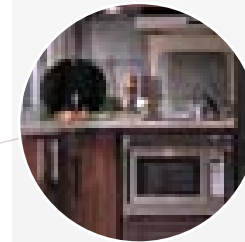
## styling

**HALOGEN LIGHTING** — Nothing improves ambience like lighting, and halogen lights do it best. Placed throughout the coach, they provide soft, non-obtrusive yet highly effective lighting. They even save on energy!

**GLASS VESSEL LAVATORY SINK** — Prism's elegant glass vessel sink enhances the sense of grandeur of the motorhome.

**CURVED CABINETRY** — Whether it's the overhead cabinets, kitchen counters, bedroom or bathroom design, we styled graceful, wave-like curves into the cabinetry and interior walls to enhance the coach's upscale look and feel.

# FEATURES



Stainless steel appliances enhance the elegance of the coach.

# PRISM

In the motorhome industry, the norm has been that the larger the coach, the more upscale the features. So what if you want a superbly appointed coach in an easy-to-manage size? Now you can get the best of both worlds with Prism. Step into its stately interior. Everything you see, feel and experience says this coach is for someone who wants it all — but in a size that can go anywhere!



# FEATURES



Stylish curved overhead cabinets provide lots of storage space. Plus, the designer halogen ceiling lights add a warm, cozy touch.

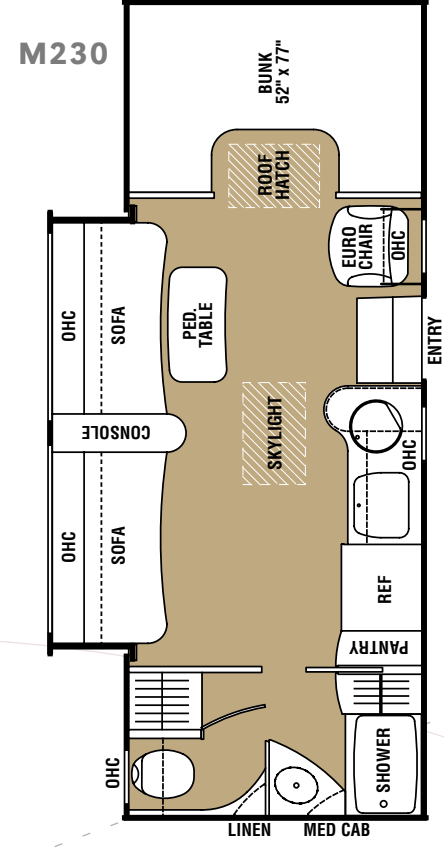
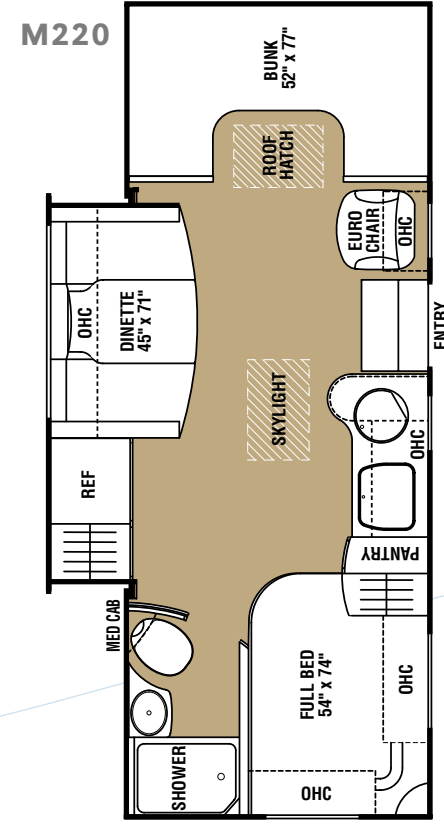
A skylight with retractable sunscreen gives you the option of letting in as little or as much of the outdoors as you want.

With the hide-a-bed sofa opened, Prism comfortably accommodates guests for a restful night's sleep (M230).

Pass-through storage allows you to take along more gear — including larger items — for added outdoor enjoyment.

Settle into the comfortable captain's chair, and you will think you're in a high-end SUV! Yet, notice the optional back-up monitor for safety and the built-in cab window shades for privacy at the campsite.



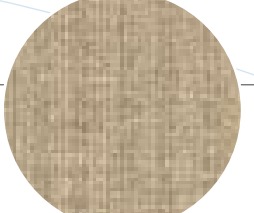

Complete with a convection microwave, space-saving flush-mount range, sink and double-door refrigerator, the galley has all you need for entertaining friends. Plus the curved Espresso Walnut cabinetry with Euro pull handles makes it easy to do so in style!



- LIVING APPOINTMENTS**
- Espresso Walnut cabinetry S
- Hidden cabinet door hinges S
- Euro pull handles on cabinets S
- Full extension ball bearing drawer guides S
- Techwood drawer sides S
- Beauflor® flooring S
- Removable carpet throughout coach and cab O
- Vinyl soft touch ceiling S
- Pleated window shades S
- Booth dinette (M220) S
- Dual recliners in place of booth dinette (M220) O
- Comfort lounge sofa in place of booth dinette (M220) O
- Dual sofas with center console (M230) S
- Pedestal dinette table at sofa (M230) S
- Soft touch Euro chair with flip up lap table S
- Roof hatch and skylight S
- SLEEPING APPOINTMENTS**
- Bedsprad and pillow shams (M220) S
- Cabover queen bed (52" x 77") S
- Privacy drape — cabover bed S
- Rear full size bed (M220) S
- Hide-a-bed sofa with memory foam mattress (M230) S
- COCKPIT APPOINTMENTS**
- Cruise control S
- Tilt steering wheel S
- Dash air conditioning S
- Power windows and locks S
- Reclining pilot seats S
- Leather captain's chairs and dash applique O
- Built-in cab window blinds S
- LCD back-up camera O
- Portable GPS navigation system S
- Heated exterior mirrors with remote S
- APPLIANCES AND ACCESSORIES**
- Cabover entertainment center: O
  - 26" LCD TV, DVD player and Bose Wave® radio S
  - Swing-out 19" LCD TV and DVD player S
  - Dash stereo with CD player S
  - Exterior entertainment center S
  - Pre-wired for satellite dish S
  - TV antenna S
  - Convection microwave S
  - Space saving flush-mount range S
  - Space saving flush-mount sink with cover S
  - Double-door refrigerator S
- HEATING AND AIR CONDITIONING**
- 25,000 BTU furnace S
- 13,500 BTU ducted roof air conditioner S
- Wall-mounted thermostat S
- Power bath vent S
- ELECTRICAL AND LIGHTING**
- 30 amp power cord S
- 55 amp electronic converter S
- Auxiliary coach battery S
- Second coach battery S
- Dual coach battery compartment S
- Coach battery disconnect S
- GFI circuit S
- Outside 120-volt receptacle S
- Cable TV jacks S
- Patio light S
- 3.2KW LP Generac generator S
- 3.2KW Onan® diesel generator O
- Coach command center S
- Designer halogen ceiling lights S
- Ambient lighting in cabinet toe kicks S
- PLUMBING AND LP SYSTEM**
- Porcelain toilet with foot flush S
- 6-gallon gas/electric E.I. water heater S
- No-Mess™ Termination System S
- Demand water pump S
- Skylight over shower S
- Glass shower enclosure S
- Vessel bowl sink — bathroom S
- Designer faucets S
- One-piece ABS tub surround S
- Outside shower S
- Heated, enclosed holding tanks S
- Black tank flusher system S
- EXTERIOR AND CONSTRUCTION**
- 3.0L V6 turbo diesel S
- Standard vinyl graphics S
- Full paint exterior graphics O
- Stainless steel wheel inserts S
- Spare tire kit S
- Fiberglass rear cap with spoiler S
- Fiberglass front cap S
- Laminated aluminum floor S
- Laminated high glass sidewalls S
- Crowned and laminated roof S
- Seamless TPO roof covering S
- Fiberglass running boards S
- Power entrance step S
- 80" tall entrance door S
- Fiberglass baggage doors S
- Patio awning S
- Slideroom awnings S
- Towing hitch with seven way plug S
- CSA Upfit® O
- SAFETY AND SECURITY**
- LP leak alarm S
- Fire extinguisher S
- Smoke detector S
- Carbon monoxide detector S
- Emergency start switch S
- Driver and passenger air bags S
- Entrance door dead bolt lock S
- Tinted safety glass windows S
- Owners information package S

## PRISM DECOR CHOICES

Our designers selected materials, finishes and hues to perfectly complement each other in this classy décor ensemble.

-  **BEAUFLO® FLOORING**
-  **DIVINITY TRUFFLE SOFT TOUCH OPTION**
-  **DIAMOND TOPAZ FABRIC**
-  **ESPRESSO WALNUT CABINERY**

## PRISM SPECIFICATIONS

|                                 | M220         | M230         |                                     | M220         | M230         |
|---------------------------------|--------------|--------------|-------------------------------------|--------------|--------------|
| Chassis                         | Freightliner | Freightliner | Exterior Storage Capacity (cu. ft.) | 52           | 52           |
| Model                           | 3500         | 3500         | Sleeping Capacity                   | 2            | 2            |
| Engine Size                     | 3.0L         | 3.0L         | Interior Height                     | 6' 6"        | 6' 6"        |
| Wheel Base                      | 170"         | 170"         | Fuel Capacity (gal.)                | 26.4         | 26.4         |
| Rear Axle Ratio                 | 4.1          | 4.1          | Fresh Water Capacity (gal.)         | 23           | 23           |
| GVWR (lbs.)                     | 11,030       | 11,030       | Gray Water Capacity (gal.)          | 38           | 38           |
| CW (lbs.)                       | 9,500**      | 9,500**      | Waste Water Capacity (gal.)         | 38           | 38           |
| GCWR (lbs.)                     | 14,530       | 14,530       | Water Heater Capacity (gal.)        | 6            | 6            |
| Exterior Length                 | 24' 11"      | 24' 11"      | LP Gas Capacity (lbs.)              | 40           | 40           |
| Exterior Height (including A/C) | 10' 3"       | 10' 3"       | Tire Size                           | LT1215/85R16 | LT1215/85R16 |
| Exterior Width                  | 96"          | 96"          |                                     |              |              |

**GVWR** (Gross Vehicle Weight Rating): The maximum permissible weight of the unit, including the unloaded vehicle weight plus all fluids, cargo, optional equipment and accessories. For safety and product performance, do not exceed the GVWR.

**CW** (Curb Weight): The weight of the unit without factory or dealer installed options, plus allowance for the weight of full fuel capacity. The "payload capacity" for all other fluids, cargo, occupants, optional equipment, and accessories can be determined by subtracting the CW from the GVWR.

**GCWR** (Gross Combined Weight Rating): The maximum total weight of the loaded unit, plus a tow vehicle. This includes the weight of both the unit and tow vehicle, fuel for each, all other fluids, cargo, occupants, optional equipment and accessories.

**Wider Widths:** Numerous Coachmen floorplans feature the "wide body" design concept, which gives you significantly enhanced interior living space and innovative floorplans.

In making your purchase decision, you should be aware that a few states restrict access on some or all roads within the state to vehicle with a maximum 96" width, although special road usage permits may be available. Vehicles up to 102" in some width are permitted in the vast majority of states. You should confirm the road usage laws in the states of interest to you before making your purchase decision.

If width is of concern to you, we invite you to consider the broad array of other Coachmen models offers in the standard 96" width.

**Important Note:** All capacities are approximate, and all dimensions are nominal. Coachmen motorhomes are designed to allow for a wide variety of uses, extended trips with two people or short trips with multiple people. Accordingly, each unit allows ample room for sleeping, seating, fluids and cargo. While the customer is the beneficiary of this design, the customer also bears the responsibility to select the proper combination of passengers, cargo, load, and tow vehicle without exceeding the chassis weight capabilities. Consumer may need additional braking capacity to tow loads greater than 1,000 pounds.

Seat belt should always be worn for passenger safety. Seat belts are provided at most locations to allow convenience in selecting which seat to occupy. However, it is not intended that all seating positions equipped with a seat belt may be occupied while the vehicle is in motion, without regard to other weight factors.

All Coachmen motorhomes are designed to ensure that the number of passengers allowed while the vehicle is in motion will always at least equal the stated sleeping capacity. Though extra seat belts may be provided, for your safety and the proper operation of your vehicle, limit your passengers to the number allowed by the Net Carrying Capacity of your vehicle.

## PRISM GRAPHICS PACKAGES

-  STANDARD GRAPHICS
-  CASHMERE FULL PAINT GRAPHICS
-  STEEL FULL PAINT GRAPHICS

# COACHMEN

## easy to use

Coachmen is committed to ensuring your comfort on the road. As you will see in the design of our products, we're there to make sure your Coachmen RV is as easy and uncomplicated as possible, so you can escape life's hassles and enjoy RVing.

Your Coachmen RV will be easy to buy, easy to use and easy to own. That's our promise to you. We accomplish this through clever designs and superior support after the sale. But the real measure of "easy" is in the countless thoughtful touches we include throughout your new Coachmen RV.

## easy to own

Our commitment to you is your ongoing satisfaction. Dealers are authorized to solve your problems on the spot and get you on your way without fuss or hassle. Should you ever need service or repair, it is easy to find one of the hundreds of Coachmen dealers or authorized repair centers nationwide.

Our toll-free service hotline (800-453-6064) and online service support center put you in touch with a Coachmen service representative, warranty information, maintenance information, troubleshooting tips, dealer locations and other helpful information. Coachmen. You couldn't ask for an easier traveling companion.

## travel easy™

RVing is easier with Coachmen's Travel Easy™ Roadside Assistance included for the first year on most new motorized and towable Coachmen RVs\*. Administered by Coach-Net®, this service provides you with 24/7 operational, technical and emergency road service coverage. Anywhere. Anytime. Travel Easy™ is the security of knowing that help is an easy phone call away.

*\*See your dealer for details.*



## easy to enjoy

Purchase a new Coachmen RV and receive a free one-year membership in the Coachmen Owners' Association (COA).



You'll enjoy exclusive discounts at campgrounds, theme parks and fuel stations. You'll also receive concierge service 24/7 so you can find and buy what you need, often at big discounts!

Other benefits include trip routing, vacation packages, event reservations, mail forwarding and our helpful owners magazine — Easy RVing. Plus annual camping events and support network and services for first-time buyers.

Take advantage of your COA membership today by calling 888-422-2582.

**To see how Coachmen is making the easy life even easier, visit [www.easyRVing.com](http://www.easyRVing.com) or call 1.800.353.7383.**



**Coachmen Recreational Vehicle Company, LLC**  
P.O. Box 30, Middlebury, IN 46540

All information contained in this brochure is believed to be accurate at the time of publication. However, during the model year, it may be necessary to make revisions, and Coachmen reserves the right to make all such changes without notice, including changes in prices, colors, materials, equipment and specifications, as well as the addition of new models and the discontinuance of models shown in this brochure. Therefore, please consult with your Coachmen dealer and confirm the existence of any materials, design or specifications that are material to your purchase decision.