

*Laredo*  
By Keystone

# *Laredo*

By Keystone

BEST  
IN  
CLASS

More Best in Class  
Features than Competition!





# Laredo

By Keystone



*265 RL shown in Birch Decor, provides you with elegant residential features that allow you to relax in style.*



# **Laredo— One of a Kind**



**“Best in Class”** - With Laredo, this is more than a slogan - it’s the strategy that guides us every day as we aspire to create the perfect Recreational Vehicle. If you desire an easy-to-tow fifth wheel that doesn’t skimp on features, conveniences or quality, Laredo will offer you an RV that is truly ...

**“BEST IN CLASS” ... BEST IN VALUE.**

***When you are the  
Best in Class ...***



Your kitchen countertops are made of genuine Corian® with matching sink covers and paired with an upgraded metal high rise faucet and an oversized sink to accommodate your large pots and pans.



**Laredo offers more storage than anyone in its class, with plenty of room for all the extra supplies.**



Every drawer includes full extension steel ball bearing drawer guides for strength and maximum storage that allows for full use of space.

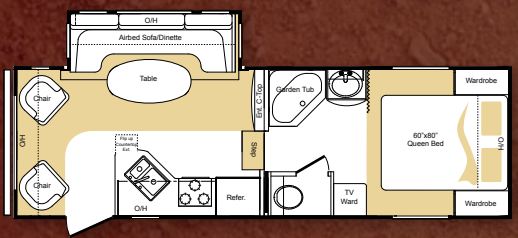


Laredo features residential-style kitchen cabinets that have convenient shelves, which allow you to pack everything you desire.

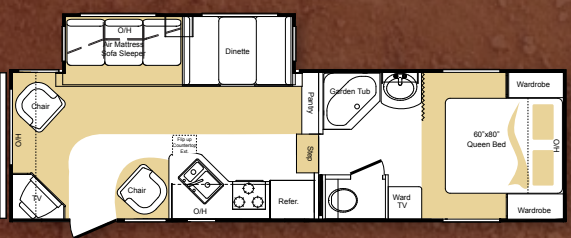


# Laredo Fifth Wheel Floorplans

By Keystone



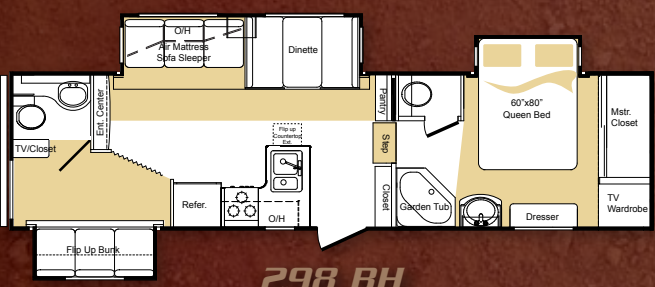
245 RL



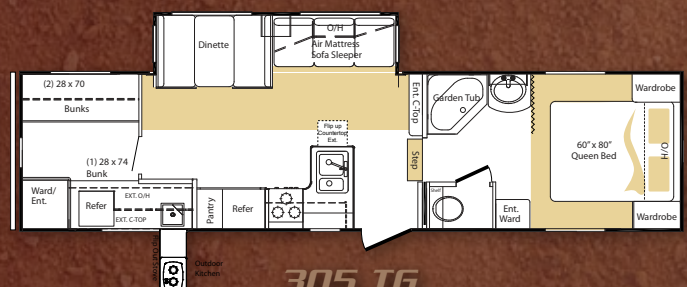
265 RL



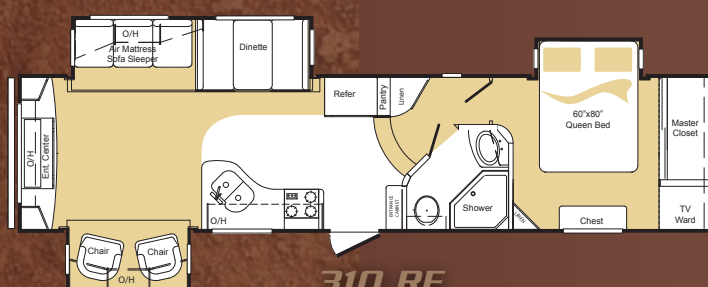
266 RL



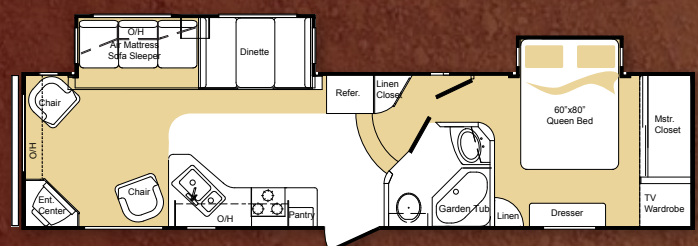
298 BH



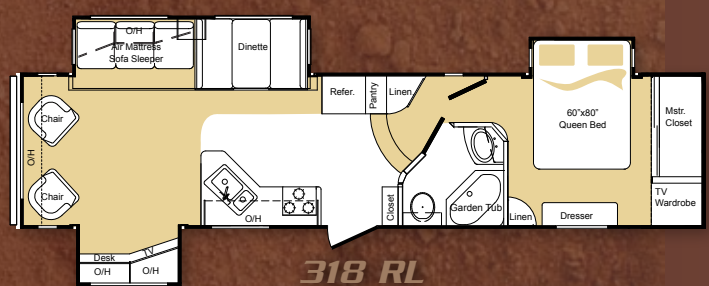
305 TG



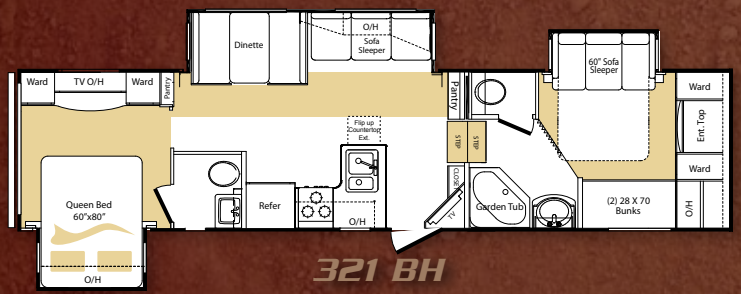
310 RE



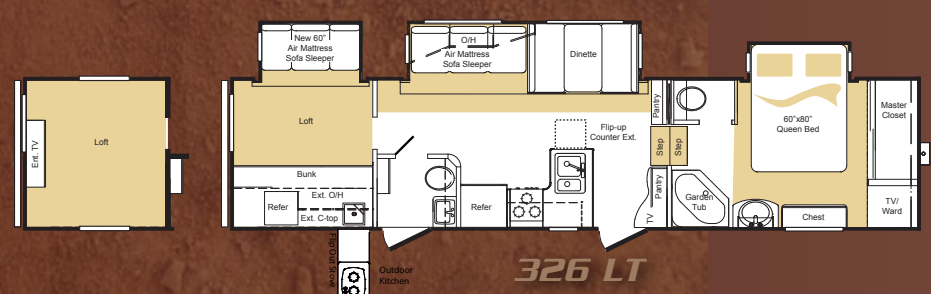
316 RL



318 RL



321 BH



326 LT

# Construction

## WALL CONSTRUCTION (R-9)

- 1 Gel-coated fiberglass exterior
- 2 1/8" Luan wood backer
- 3 Hi-density block foam insulation
- 4 Radius window corner blocks
- 5 2" Welded aluminum sidewall studs
- 6 Fiberglass batten insulation
- 7 High-gloss front fiberglass cap
- 8 Metal backing strips

## ROOF CONSTRUCTION (R-28)

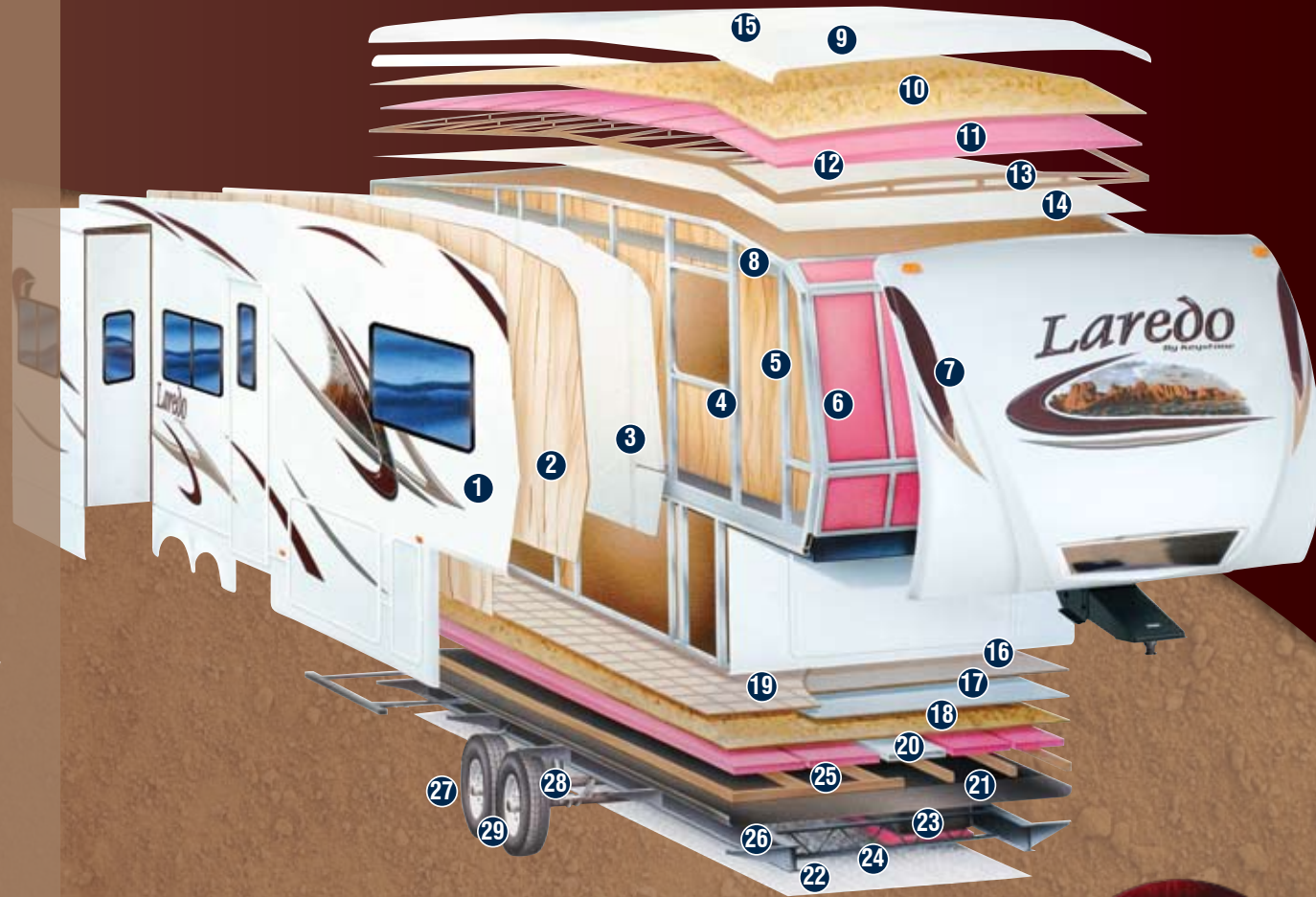
- 9 One-piece EPDM rubber roof with 12-year warranty
- 10 3/8" Fully walkable roof decking
- 11 Fiberglass batten insulation - 2 layers
- 12 Heat reflective Astro foil insulation
- 13 5" "Snow Load" roof trusses
- 14 1/8" Ceiling decking with vinyl protection
- 15 Vented attic

## FLOOR CONSTRUCTION (R-30)

- 16 Residential grade carpet with stain protection
- 17 Residential grade carpet padding
- 18 5/8" Seamless wood floor decking with limited lifetime warranty
- 19 Residential grade linoleum
- 20 In-floor ducted heat
- 21 Darco wrap (main floor)
- 22 Astro foil bubble insulation
- 23 Fiberglass batten insulation - 2 layers
- 24 One-piece, fluted polypropylene fully enclosed sub-floor
- 25 3" floor joists on 12" - 16" centers
- 26 Therma Shield 37 holding tank enclosure

## TIRE & CHASSIS

- 27 10" or 8" steel "powder coated" I-beam frame
- 28 15" or 16" radial tires
- 29 EZ Lube axles



## Expand Your Comfort Zone



**Laredo's exclusive Comfort Zone Climate System provides industry leading protection from extreme early and late season temperature variations.**

- Enclosed and Heated Underbelly and Gate Valves
- 35,000 BTU Furnace
- R-28 Roof Insulation
- R-30 Floor Insulation
- Heated Pass Through Storage
- Vented Attic System

	245 RL	265 RL	266 RL	298 BH	305 TG	310 RE	316 RL	318 RL	321 BH	326 LT
Shipping Weight	7390	7974	8473	9787	8890	TBD	9413	10080	10255	TBD
Carrying Capacity	2410	2626	2527	2063	2935	TBD	2587	2920	2745	TBD
Hitch	1310	1360	1775	1690	1675	TBD	1785	1845	1980	TBD
Exterior Length	26' 11"	30'	30' 5"	33' 3"	33' 11"	36'	35'	36'	36'	36' 9"
Exterior Height	12' 4"	12' 4"	12' 4"	13'	12' 7"	12' 7"	12' 7"	12' 7"	12' 7"	TBD
Fresh Water Gal.	49	49	49	55	49	55	55	55	55	55
Waste Water Gal.	40	40	40	75	40	40	40	40	75	75
Grey Water Gal.	40	40	40	75	100	75	75	75	75	75

# Laredo *More Best in Class Features ...*

By Keystone



Exterior storage is necessary and Laredo delivers with up to 129 cubic feet of unobstructed pass thru storage.



This cleverly designed roto-cast tub was created as a convenient place to store wet or greasy items. However, some of our customers have found other innovative applications.



A convenient flip of a switch allows the Laredo to be leveled by powerful 12-volt electric stabilizer jacks.



An electric slideout Stor-Mor utility tray is great for bikes, firewood and portable generators.



The Laredo sofa sleeper with electrically operated air mattress also offers over 8 cubic feet of storage beneath the bed.



The insulated radius corner bus style slam baggage doors feature an automotive rubber seal to protect your belongings from the elements. Heavy duty gas struts make the operation easy, and locks are individually keyed for security.



The vented attic system promotes even air exchange and allows moisture to escape from the roof.



"Best in Class" innovation never stops with the introduction of the "Outdoor Kitchen" - a Laredo exclusive. (Found on the 305TG and 326LT.)

# Max Turn Technology

When given the challenge of creating a Recreational Vehicle that maximizes turning radius, reduces fuel consumption and tows great on the worst of roads, Laredo engineers utilized MAX TURN TECHNOLOGY to create a fifth wheel that has become the benchmark for Hi-Performance Towing.



Laredo's state of the art fiberglass cap features increased fuel economy while towing, also includes Hitch Vision and docking lights which allow customers to hook-up with ease.

**MAX  
TURN  
TECHNOLOGY**

**#1 IN TURNING  
RADIUS**

UTILIZING THE LATEST DESIGN IN FRONT CAP AND FRAME INTEGRATION  
TO CREATE INDUSTRY LEADING TURNING RADIUS!

**NOTHING TURNS LIKE A**  
*Laredo*

**PATENT PENDING**

## Super Sport Suspension



Equa Flex  
rubber  
suspension  
with heavy  
duty axles.



Heavy duty  
12" electric  
brakes.



Radial tires &  
aluminum  
wheels provide  
both safety  
and a sporty  
look!

Laredo's Super Sport Suspension will absorb all the "shock waves" created by potholes and other road irregularities. Equipped with larger heavy duty 12" brakes, Laredo can be stopped easily when braking.

## Laredo Decors



Rain Forest



Birch



Look for our  
Walk Around Video  
on our website!

## Laredo Fifth Wheel Standards & Options

### Tires & Chassis

- Powder-coated I-beam frame
- Tube style bumper w/sewer hose storage
- Electric slideout system w/manual override
- Adjustable extended hitch pin
- Electric bike/storage rack (200# limit) (N/A 245)
- Radial tires
- EZ lube axles
- 12" electric brakes
- Full-size spare tire

### EXTERIOR

- Fully enclosed underbelly
- Heated, enclosed holding tanks & gate valves
- Oversized lighted pass-thru storage w/tool box storage
- Roto cast storage for wet or greasy items
- Exterior shower w/hot & cold
- Fold away entry assist handle
- Exterior marine grade speakers
- Rain gutters w/downspouts
- Security light
- Entrance door light
- Rear ladder
- Triple entrance steps
- Electric front jacks w/adjustable snap pins
- Aerodynamic front cap w/Hitch Assist Mirror & 2 LED lights w/Max Turn Technology
- Outside 110V outlet & TV connection

### INTERIOR

#### Living Area

- Extra wide dinette w/storage below
- 6'3" slide room height
- Ventilating windows on slideout end walls
- Overhead cabinets in slide rooms
- Residential grade carpet and padding
- Stain resistant fabrics
- Pleated day/night shades
- Designer window treatments
- Raised panel mortise & tenon cabinet doors
- Entertainment center w/TV cabinet

### Kitchen

- Residential-size overhead cabinets
- Dual Corian sink covers
- Flip up Corian countertop extension (N/A 316, 318)
- 60/40 deep-bowl under-mount sink
- Metal high-rise faucet
- Linoleum floor
- Ball bearing full extension drawer guides

### Bathroom

- Oversized shower w/glass door
- Tub surround w/shelves
- Porcelain foot pedal flush toilet
- Residential-size bath sink
- Medicine cabinet
- Skylight over bath
- Power roof vent

### Bedroom

- 60"X80" innerspring mattress
- Bedspread w/matching headboard
- Wardrobe storage
- TV hook-up
- Reading lights

### Appliances

- 12V AM/FM/CD/DVD home theater system
- w/ surround sound effect speakers
- Double door refrigerator w/wood inserts
- Microwave w/carousel
- Range hood and light
- 13,500 BTU ducted A/C
- 22" high output range w/auto igniter

### Utilities

- Easy access double 30-lb. LP bottles w/auto changeover
- 35,000 BTU high-output furnace w/automatic ignition
- 6 Gallon gas/elec. DSI hot water heater (245, 265, 266, 305)
- Winter Guard winterizing kit
- Water heater bypass kit
- Systems monitor panel

- 55-amp convertor
- 30-amp power cord
- Cable & satellite hook-ups

### Safety

- LP gas leak detector
- Smoke detector
- Carbon monoxide detector
- Fire extinguisher
- 12" Electric brakes w/breakaway switch
- Safety glass windows

### OPTIONAL EQUIPMENT

- 15,000 BTU ducted A/C
- Free standing dinette w/4 chairs
- Canadian certification

### Best in Class Package (All FWs)\*

- Adjustable electric awning
- 26" LCD HD TV (298-32" 310-42")
- Electric rear stabilizer jacks
- Equa-Flex suspension system
- Aluminum wheels
- Air mattress sleeper sofa w/storage below
- Corian surface countertops (kitchen)
- Bus style slam baggage doors
- Comfort Zone Climate System

### Bigger is Better Package

(298, 310, 316, 318, 321, 326)\*

- 8 cubic foot refrigerator
  - 12 gallon gas/electric DSI hot water heater
  - 16"-8 lug aluminum wheels
  - 6,000lb axles
  - 50 AMP service
  - Wire and frame for 2nd A/C
- \*Mandatory Package





# Best in Class. Laredo Travel Trailer Standards & Options



## TRAVEL TRAILER CONSTRUCTION/FEATURES

- Walls-R-7 Welded, aluminum framed sidewalls and endwalls
- Laminated, gel-coated Fibon Solid block foam insulation

### Floor-R-14

- 1 piece laminated floor
- Moisture barrier underbelly
- Underbelly is enclosed with one-piece fluted polypropylene
- Note: Underbelly heated by furnace

### Roof-R-11

- 4-1/2" Stamped Steel, radius truss rafters on 16" centers
- 3/8" roof decking — Full walk-on!
- One-piece EPDM rubber roof with insulated, A/C duct

## INTERIOR

- Living Area U-shaped dinette w/storage below
- Adjustable "Komfort Kollapsee" dinette table
- Ventilating windows on slideout end walls

## Utilities

- Overhead cabinets in slide rooms
- Residential grade carpet & padding
- Stain resistant fabrics
- Pleated fabric shades
- Designer window treatments
- Raised panel mortise & tenon cabinet doors
- Entertainment center w/TV cabinet

## Safety

- Break away switch
- Tinted safety glass windows
- GFI receipts
- Carbon monoxide detector
- Smoke alarm
- Propane gas leak detector
- Fire extinguisher

## OPTIONAL EQUIPMENT

- 15,000 BTU ducted A/C
- Free standing dinette w/4 chairs
- Canadian certification

## BEST IN CLASS PACKAGE

- Power tongue jack
- Adjustable electric awning
- 26" LCD HD TV (296-32" LCD HD TV)
- (4) Electric stabilizer jacks
- Equa-Flex suspension system
- Aluminum wheels
- Air mattress sleeper sofa w/storage below
- Diamond plate front protection
- "Family Sized" dinettes
- Glacier Package

\*Mandatory Package

## Living Area

- 60"X80" innerspring mattress
- Bedspread w/matching headboard
- Wardrobe storage
- TV hook-up
- Reading lights

## Kitchen

- Residential-size overhead cabinets
- Sink cover
- Flip up countertop extension
- 60/40 deep-bowl under-mount sink
- Metal high-rise faucet
- Linoleum floor
- Ball bearing full extension drawer guides

## Bathroom

- Oversized tub/shower
- Tub surround w/shelves
- Foot pedal flush toilet
- Residential-size bath sink
- Medicine cabinet
- Skylight over bath
- Power roof vent

## Bedroom

- 12V AM/FM/CD/DVD home theater system w/surround sound effect speakers

## Appliances

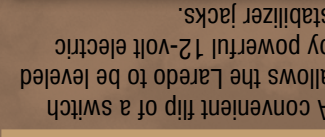
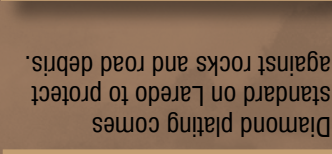
- Folding entry assist handle
- connection
- Outside 110V outlet & TV
- Triple entrance steps
- Entrance door light
- Security light
- Rain gutters w/downspouts
- Exterior marine grade speakers
- Exterior shower w/hot & cold storage
- Oversized lighted pass-thru gate valves
- Heated, enclosed holding tanks & Fully enclosed underbelly

## EXTERIOR

- Full-size spare tire
- Electric brakes
- EZ lube axles
- Radial tires
- Powder-coated I-beam frame
- Tube style bumper w/sewer hose storage
- Electric slideout system w/manual override

## Tires & Chassis

- 4-1/2" Stamped Steel, radius truss rafters on 16" centers
- 3/8" roof decking — Full walk-on!
- One-piece EPDM rubber roof with insulated, A/C duct



A convenient flip of a switch allows the Laredo to be leveled by powerful 12-volt electric stabilizer jacks.

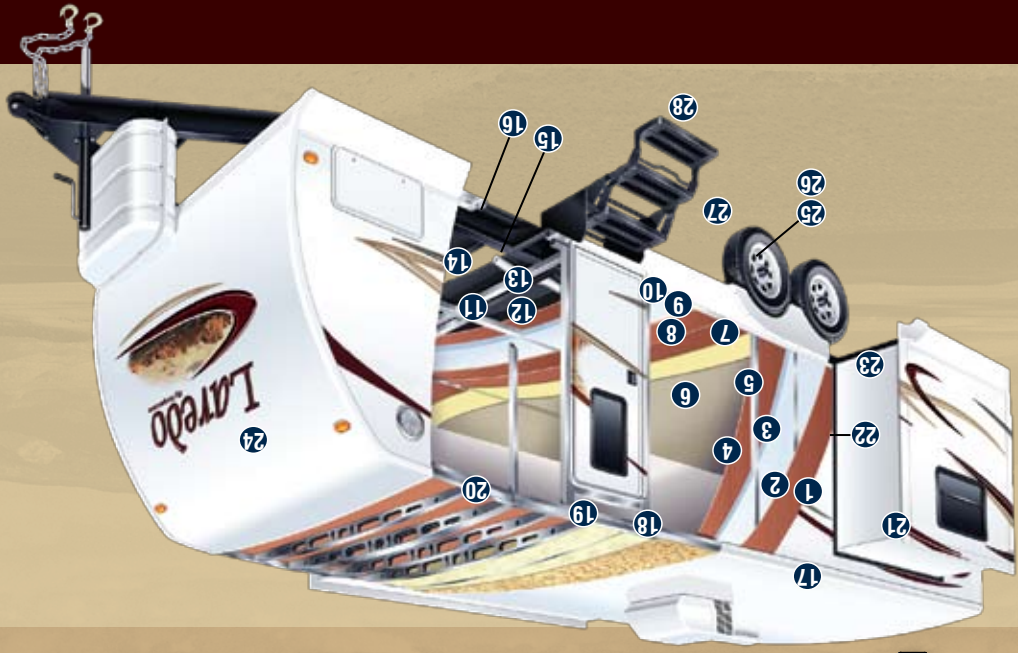
Diamond plating comes standard on Laredo to protect against rocks and road debris.

15" Aluminum wheels offer upgraded style while reducing weight.

Standard power tongue jack makes hooking up quick and easy.

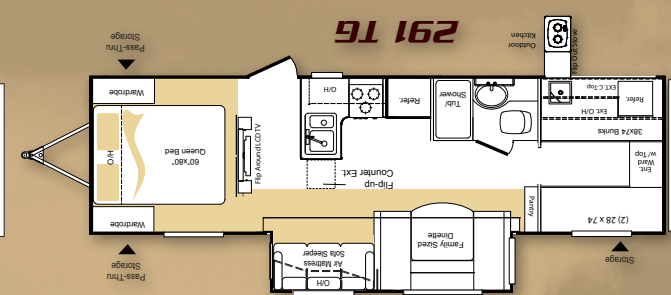
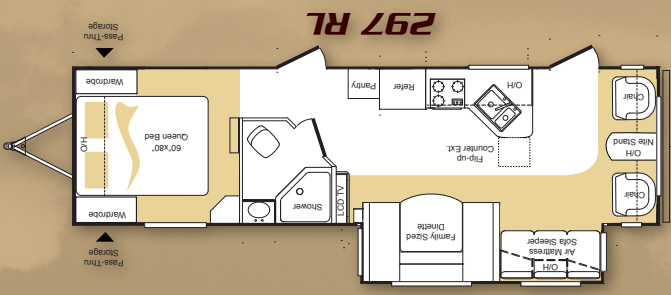
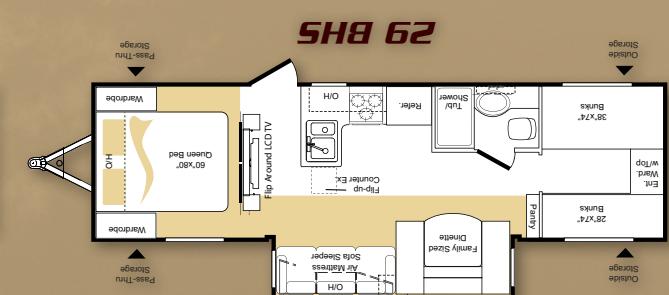
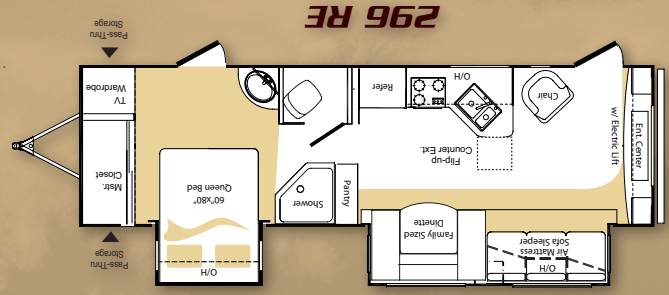
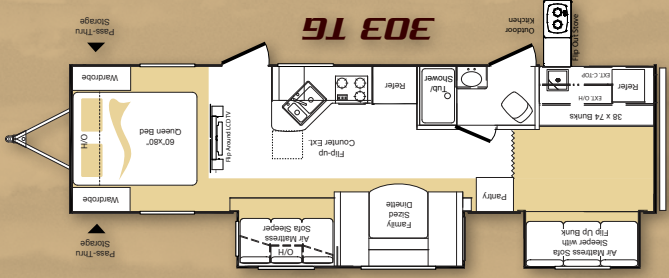
Laredo travel trailers put underbelly with heated tanks and dump valves will extend your camping season and increase aerodynamics while towing.

Fully enclosed and heated underbelly with heated tanks and dump valves will extend your camping season and increase aerodynamics while towing.

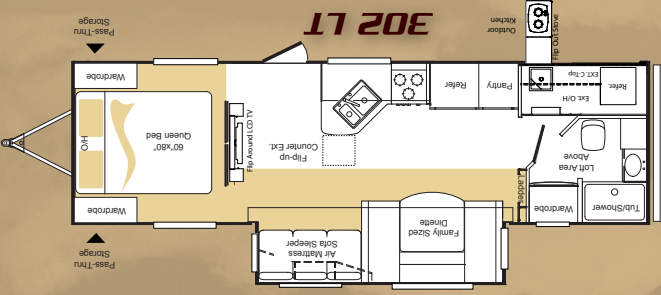


- 1 Gel Coated Filon Exterior
- 2 Luan Layer
- 3 Hi-Density Block Foam Insulation
- 4 Interior Wallboard
- 5 Total Aluminum Frame
- 6 Residential Grade Carpet and Linoleum
- 7 Carpet Padding
- 8 1st Layer Floor Decking
- 9 2nd Layer Floor Decking
- 10 Hi-Density Block Foam Insulation with Staggered Seams
- 11 Aluminum Floor Studs
- 12 3rd Layer Floor Decking
- 13 Moisture Barrier Wrap
- 14 Enclosed Underbelly
- 15 Underbelly Heat Duct
- 16 PACO I-Beam Frame
- 17 One Piece Rubber Roof
- 18 Roof Decking
- 19 R-11 Insulation
- 20 5" Crowned / Stamped Roof Trusses
- 21 Sloped Slide Roof
- 22 Wiper Seals
- 23 Bulb Seal in T-Track
- 24 Aerodynamic Front Wall
- 25 Easy Lube Axles
- 26 Load Equalization Axles
- 27 Radial Tires
- 28 Radius Entry Steps

- 1 Enclosed Underbelly
- 2 Underbelly Heat Duct
- 3 Hi-Density Block Foam Insulation
- 4 Interior Wallboard
- 5 Total Aluminum Frame
- 6 One Piece Rubber Roof
- 7 Roof Decking
- 8 R-11 Insulation
- 9 5" Crowned / Stamped Roof Trusses
- 10 Sloped Slide Roof
- 11 Wiper Seals
- 12 Bulb Seal in T-Track
- 13 Aerodynamic Front Wall
- 14 Aluminum Floor Studs
- 15 Easy Lube Axles
- 16 Load Equalization Axles
- 17 Radial Tires
- 18 Radius Entry Steps



28 RBS	6070	2130	635	31'	10' 11"	43	30	Grey Water gal.
29 BHS	6310	1590	675	33'	10' 11"	43	30	Waste Water gal.
291 T6	6685	1515	600	33'	10' 11"	43	30	Fresh Water gal.
293 RK	180	180	180	33'	10' 11"	43	30	Exterior Height
296 RE	7077	1123	710	33'	10' 11"	43	30	Exterior Length
297 RL	6375	1825	640	33'	6"	43	30	Hitch
302 LT	180	180	180	33'	2"	43	30	Carrying Capacity
303 T6	7485	1515	695	35'	5"	43	30	Shipping Weight



Laredo offers plenty of seating and sleeping area with its family sized dinette.



26" LCD TV's that can be viewed from both the living area and bedroom.



Laredo gives best in class outdoor cooking with the industry leading Outside Kitchen.



291 T6 Shown in Rain Forest Decor



# Laredo Super Lite Series

Super Lite Series

Laredo  
By Keystone

Laredo  
Member  
RVIA  
RECREATIONAL VEHICLE  
INDUSTRY ASSOCIATION

Product information is as accurate as possible as of the date of publication of this brochure. Features, floor plans, and specifications are subject to change without notice. Please also consult Keystone's web site at [keystonev.com](http://keystonev.com) for more current product information and specifications. **Tow Vehicle Disclaimer: CAUTION:** Owners of Keystone recreational vehicles are solely responsible for the selection and proper use of tow vehicles. All customers should consult with a motor vehicle manufacturer or their dealer concerning the purchase and use of suitable tow vehicles for Keystone products. Keystone disclaims any liability or damages suffered as a result of the selection, operation, use or misuse of a tow vehicle. KEYSTONE'S LIMITED WARRANTY DOES NOT COVER DAMAGE TO THE RECREATIONAL VEHICLE OR THE TOW VEHICLE AS A RESULT OF THE SELECTION, OPERATION, USE OR MISUSE OF THE TOW VEHICLE. November 2009



# Super Lite Series Laredo By Keystone



More Best in Class  
Features than competitors!



Keystone RV  
Company

2642 Hackberry Drive, Goshen, Indiana 46526 • 574-535-2100