



The New Standard
of Luxury

GRAND JUNCTION

STANDARD AND OPTIONAL FEATURES

Grand Junction Luxury Package

- **ALUMA LAM Construction**
- 6 Sided Welded Aluminum Cage Construction
- 5 Way Lamination - Walls and Floor
- Gel Coated Fiberglass Exterior
- 3" Welded Aluminum Bath Deck

EASY HITCH FRONT CAP (Fifth Wheels)

- Front Cap with Expanded Turning Radius
- Back Up Mirror in Front Cap
- LED Docking Lights

DYNA-GLIDE Premium Suspension

- Equa Flex Suspension Enhancement
- Quad Shock Absorbers
- EZ Lube Axles
- 16" 8 Lug Premium Aluminum Rims with Radial Tires
- Four Wheel Electric Brakes
- 16" Steel Rim Spare Tire

UTILITY DOCKING STATION

- Gravity Water Fill, Exterior Shower, Black Tank Flush
- City Water Fill, Cable and Phone Hook-Ups and Satellite Prep
- 12 Volt Utility Light, Winterization Valves, By-Pass Valves & Gate Valves

ARCTIC GUARD Four-Season Insulation

- R Values - Roof R38, Floor R21, Walls R9, Underbelly R14
- Enclosed Insulated and Heated Underbelly
- Flex Foil Insulation in Underbelly, Roof and Slide Floors
- Forced Air Heat to Underbelly and Storage Compartment
- Enclosed and Heated Tanks and Knife Valves
- Fully Wrapped Skirt, Sidewalls to Main Frame Rails

EASY DUMP Stow-Away Sewer Boom

- No-Mess Waste Disposal System
- Dedicated Hose Storage
- Single Point Termination

HYDRA GLIDE Hydraulic Slide System

- Hydraulic Slide System
- Independent Selector Valves
- Single Switch Operation

SIGNATURE Cabinetry

- Solid Cherry Raised Panel Cabinet Doors
- Solid Cherry Stiles & Drawer Fronts
- Pre-Drilled & Screwed Residential Cabinetry
- Custom Solid Wood Slideout Fascia
- Etched Glass Overhead Door Inserts
- Solid Hardwood, Raised Panel Refrigerator Front
- LG HI-MACS® Acrylic Solid Surface Countertops Throughout
- LG HI-MACS® Acrylic Sink Covers

- 6 Panel Passage Doors
- Stainless Steel, Ball-Bearing Drawer Glides
- Oil-Rubbed Bronze Hardware
- Galley Accent Lighting with Dimmer Switch
- Galley Toe Kicks under Base Cabinets

QUICK SET LED Wireless Remote Control

- Operates:
- Power Landing Gear
 - Power Rear Stabilizer Jacks
 - Power Patio Awning
 - Exterior Patio Light
 - Hydra Glide Slide Out Rooms

Standard Features

ONE TOUCH Appliance Package:

- 3 Burner Cook Top with 22" Oven
- 12 Gal. Gas/Electric/DSI Water
- 40K BTU Furnace - Forced Air Ducted Heat & Forced Air Heat in Underbelly
- 8 Cubic Foot Double Door Refrigerator
- 30" OTR Residential Microwave Oven with Built-In Exhaust

OVAL AIR Dual Zone Air Conditioning

- Whole-House Ducted A/C System
- 15,000 BTU Air Conditioner with Dual Zone Remote Control
- Insulated and Foil Wrapped Ducted A/C
- Cold Air Return Ducting from Bedroom Completes Oval
- Bedroom Wired and Prepped for Optional Ducted A/C

MEDIA CENTER Premium Entertainment System

- 32" Or 42" LCD HD Flat Screen TV - (See Floorplans)
- AM/FM/CD/DVD (12-Volt Compatible) Zone Speaker Switch, Mp3/Ipod Compatible
- Satellite Prep, Cable Jack & TV Antenna with Power Booster
- 19" LCD TV in Bedroom
- 6 Interior & 2 Exterior Marine Speakers

MAXX STORAGE System

- MAXX Interior Storage
- Large Kitchen Pantry
- Overhead Kitchen Cabinets/No Center Stiles
- Large Front Wardrobe with MAXX Storage
- Oversize Drawers In Front Closet
- Full Extension Drawers Throughout
- Storage in Bed Base
- Built In Clothes Hamper (Split Bath Models)
- Solid Wood Dinette Table with Leaf Storage
- 4 Dinette Chairs with Storage Seats

MAXX Garage Exterior Storage

- Full Pass Through Garage Storage
- Stacked Main Rail Chassis For Increased Storage
- Durable Non-Skid Flooring

- Lined Garage Walls
- 140 Cubic Feet Of Open Storage Space (Most Floorplans)

Other Standard Features

- Exterior/Construction Features
- 3" Thick Vacuum-Bonded, One-Piece Floor
- 5/8" Structurewood, One-Piece Floor Decking
- 1/4" Floor Liner Finished With Water Resistant Poly-Flex 2000 Vapor Barrier
- 2" Thick Laminated Walls
- High Density Foam Insulation
- Gel Coated Fiberglass Exterior Finish
- Decorative Interior Wallboard
- 80% Dark Tint, Radius-Corner, Safety Glass Windows
- Welded Aluminum 5" Truss Walk-On Roof with 3/8" Roof Decking
- Two Attic Vents
- EPDM Rubber Roof Membrane
- Radius Formed Roof Edges for Smooth Transition to Sidewall
- Fiberglass Rear Cap with Ladder
- Electric Front Jacks with Quick Release Pull Pins
- Chassis-Mounted Battery Tray
- Battery Disconnect Switch
- 30" Radius Entry Door with Clear View Screen Door
- Lighted Entry Door Threshold with Auto On/Off
- Radius Triple-Entry Steps
- Exterior Patio Light
- Dual Security Lights
- Large Pivoting Entry Assist Handle

Interior Features

- Dual Swivel Rocker Recliners
- Day/Night Premium Window Shades
- Computer Station with Hookups
- Free Standing Dinette
- Comfort Air Hide-A-Bed Sofa with Storage Drawer
- Residential Window Valances with Soft Curtains
- Ceiling Fan with Custom Lighting
- Stainless Steel under Mount Kitchen Sink
- High-Profile Galley Faucet with Retractable Sprayer
- Large Neo-Angle Shower with Glass Doors
- Oil-Rubbed Bronze Shower Hardware
- Towel Hooks, Towel Bar & Toilet Tissue Holder
- Large Medicine Cabinet with Vanity Lights & Mirror
- LG HI-MACS® Acrylic® Countertop In Bathroom
- Stainless Steel Under Mount Sink In Bathroom
- Porcelain Bowl Toilet with Foot Flush
- Power Ceiling Vent in Bathroom
- Domed Skylight above Shower
- Space Maker Bedroom Slideout
- Premium 80 Pillow Top King Size Mattress
- Designer Headboard with Matching Pillow Shams
- Residential Dresser with LG HI-MACS® Acrylic Top
- Premium Bedspread Package & Window Coverings

Electrical, Plumbing, & Lighting

- Centralized Interior Command Center
- 50 Amp Electrical Service with Detachable Marine-Grade Power Cord
- 75 Amp Converter with Battery Charger
- 110 Volt GFI Receptacles
- Decorator Light above Dinette & Sofa
- Decorator Wall Scones in Living Room & Bedroom
- Entry Light Above Door
- Premium Pex Polyethylene Plumbing Lines
- Hot and Cold Water Low Point Drains
- Convenient Access to Winterization System
- Washer Dryer Prep
- Stackable Washer/Dryer Capability (Select Floorplans)

Optional Features

- **Appliance Options**
- Electric Fireplace with Integrated Space Heater
- Central Vacuum
- Residential 30" Convection Microwave Oven
- 12 Cubic Foot Four-Door Refrigerator (Most Models)
- Ultra Heat Tank Pads - 12 Volt
- Trail Air® Tri-Glide Pin Box

Climate Control Options

- Bedroom AC - Oval Air Ducted 13.5K BTU
- Dual Pane Safety Glass Windows
- Galley Fantastic Fan - W/Rain Sensor
- Bathroom Fantastic Fan - W/Rain Sensor
- Bedroom Fantastic Fan W/Rain Sensor (Not Available with Bedroom A/C)

Furniture Options

- End Table with Lamp
- Sofa Table

Exterior Options

- High Gloss Gel Coat Fiberglass Exterior
- Slide out Awning Toppers
- Generator Prep
- Generator - Onan 5.5 Kw Marquis Gold (LP)

Some Features Listed Above May Be Part of a Value Package - Contact Your Local Dealer for the Details

Your Local Dealer

www.grandjunction-rv.com

Dutchmen Manufacturing, Inc. • 2164 Caragana Court • Goshen, Indiana 46526

Sales: 574.534.1224 Fax: 574.975.0626

The New Standard of Luxury



FEATURES

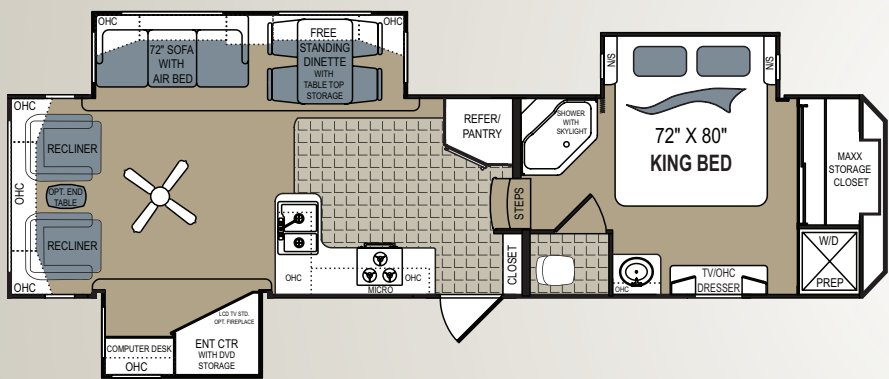
- “Aluma Lam” Full Aluminum Cage Construction
- “Quick Set” LED Wireless Remote Control
- “Utility Docking Station” Exterior
- “Arctic Guard” Four Season Insulation
- “Dyna Glide” Premium Suspension
- “MAXX Storage” System
- “One Touch” Appliance Package
- “Oval Air” Dual Zone Air Conditioning
- “Signature Cabinetry” Throughout
- “Easy Hitch” Front Cap (FW’s)
- “Hydra Glide” Hydraulic Slide System
- “Easy Dump” Stow-Away Sewer Boom
- “Media Center” Entertainment System

WEIGHTS & SPECIFICATIONS

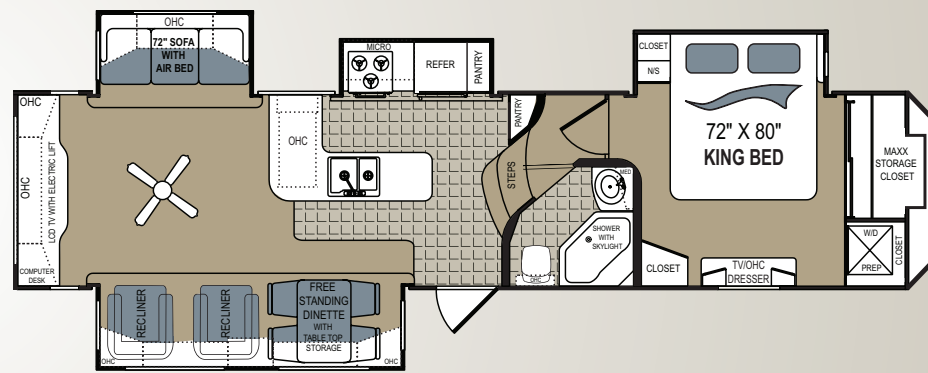
Floorplan	300RL	340RL	345RE	350RE	355RL
Unloaded Weight	10868	12417	12377	12369	12402
Hitch Weight	2104	2528	2433	2471	2670
Net Cargo Capacity	4632	3083	3123	3131	3098
Exterior Length	34' 11"	38' 0"	38' 0"	38' 0"	38' 0"
*Exterior Height	12' 10"	12' 10"	12' 10"	12' 10"	12' 10"
Fresh Water	57	57	57	57	57
Grey Water	96	96	96	96	96
Black Water	48	48	48	48	48
Furnace Size	40,000	40,000	40,000	40,000	40,000

*(WITH OPT A/C) 12' 6" WITHOUT BEDROOM A/C

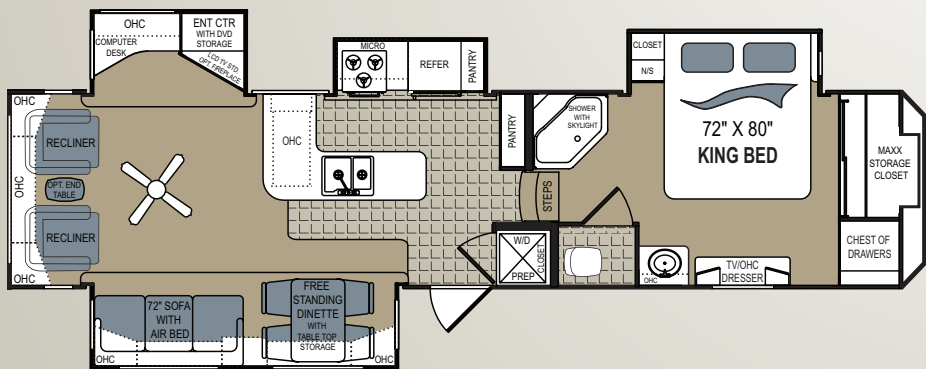
300RL



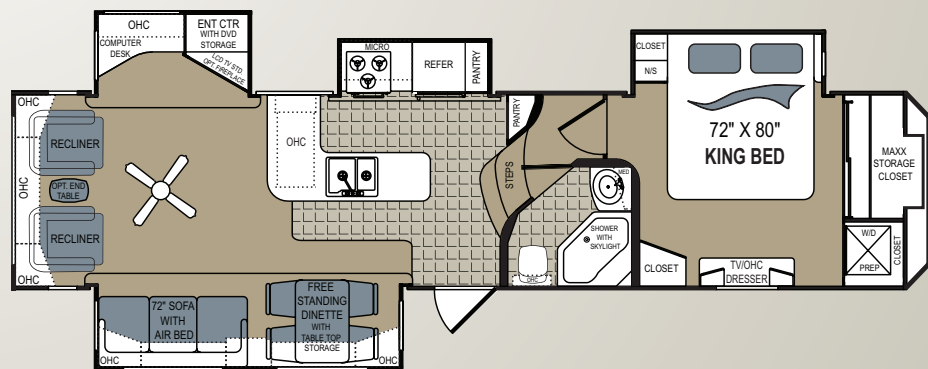
350RE



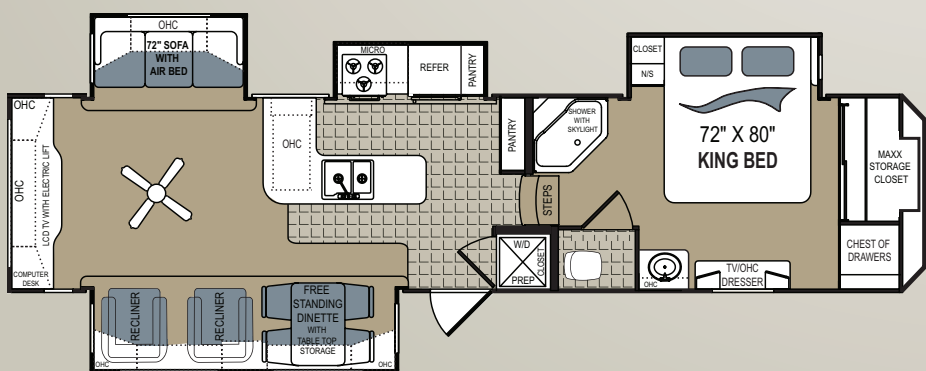
340RL



355RL



345RE



GRAND JUNCTION

