

# Outback

*Sydney Edition*

2010

Why settle...



MID-PROFILE FIFTH WHEELS

*Outback Sydney 325 FRE kitchen in Moonlight.*



*Outback Sydney 325 FRE bedroom in Moonlight.*



# Why Settle...

Experience the Wonder of Sydney: Step up to a appointed fifth wheel with Sydney by Outback. Focused on aerodynamic and tasteful design throughout and fashioned with interiors for the fresh look of today, Sydney offers you high-end quality at a mid-range price. Using the latest materials and technology to combine strength and lightness, Sydney combines durability, style, and ease of towing. Compare Sydney's list of standard features and you'll be amazed at the value Sydney delivers. **Why Settle** for anything else.

Outback Sydney 325 FRE interior in Moonlight.



Decor



Havana



Russet



Moonlight

Every Sydney model comes with an 8 cubic ft. refrigerator. Bring all of the food and drinks you want.



Outback Air Vent covers provide ventilation during inclement weather and in storage.



The Sydney Camp Kitchen features a 2-burner cook top, hot/cold water faucet with a 20ft. water hose, towel bar and cutting board. Preparing your meals in a Sydney is a breeze!

Overhead storage in the slide out is easy to access. The glass mullion slide out cabinet doors offer an elegant touch to the living area. And notice the ceiling height, 6' 2".



Experience the convenience of full extension drawer glides on all kitchen and bedroom drawers.



Sydney's centrally located Convenience Control Panel has all of your system controls in one location.



All Sydneys come standard with 50 amp service with detachable cord and are wired and prepped for a 2nd air conditioner.





Oversized pass through storage on every Sydney model allows you to take it all with you!



Sydney's heated underbelly encloses tanks and valves, helping to extend the camping season.



Enjoy a comfortable nights sleep on Sydney's air bed sofa sleeper. Sleeps 2 adults comfortably.



Sydney's one touch power awning greatly reduces set up time, so you can spend more time camping!



Turning radius is improved more than 30% with the most aerodynamic front fiberglass cap in the industry. Hitch mirror and lights make hooking up easy.



*Outback Sydney 321 FRL in Havana.*

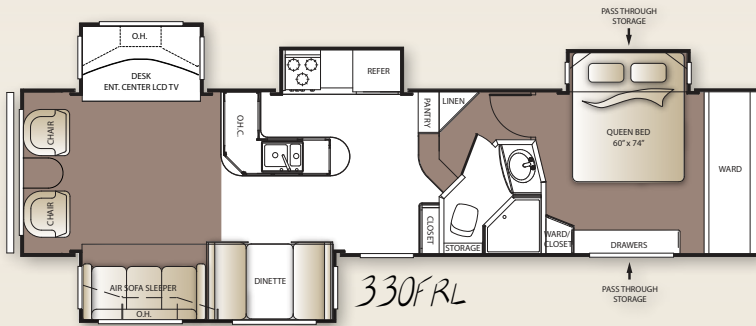
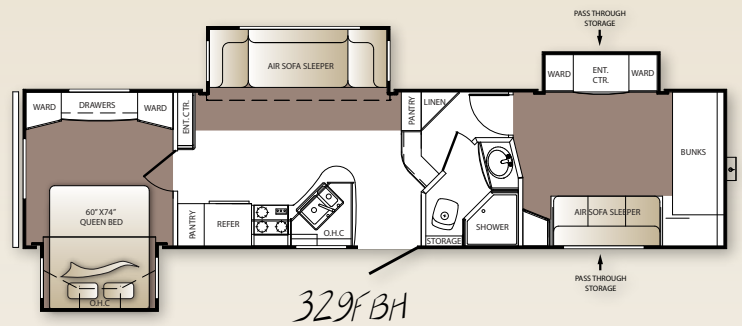
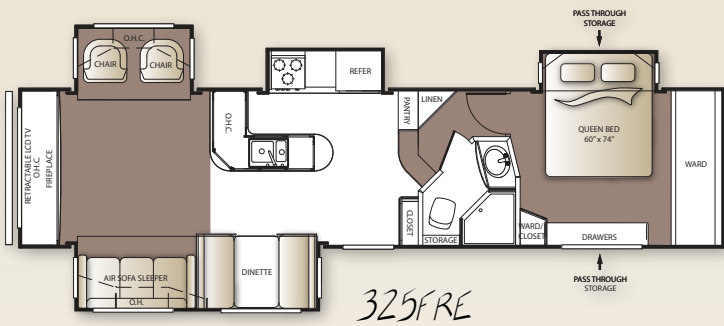
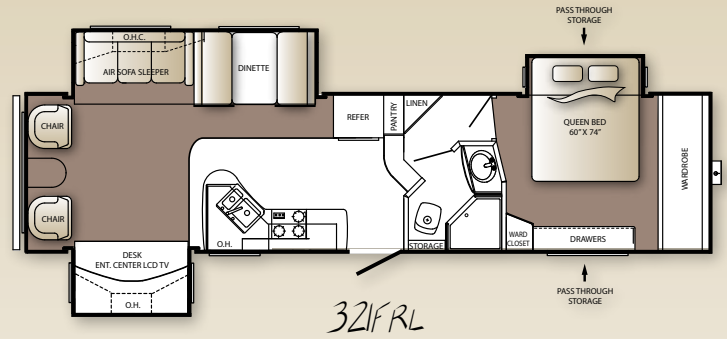
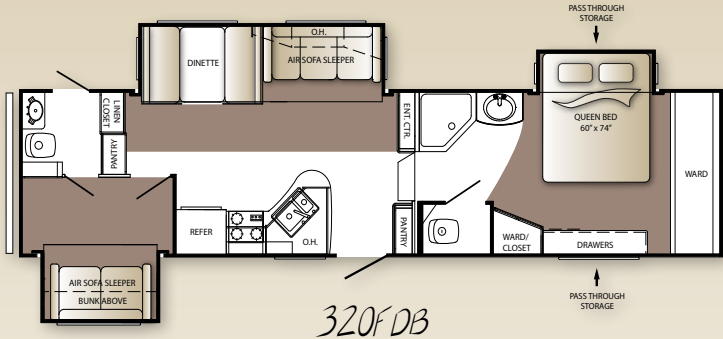


Sydney's black tank flush makes cleaning the tank simple!

# Outback

## Sydney Edition

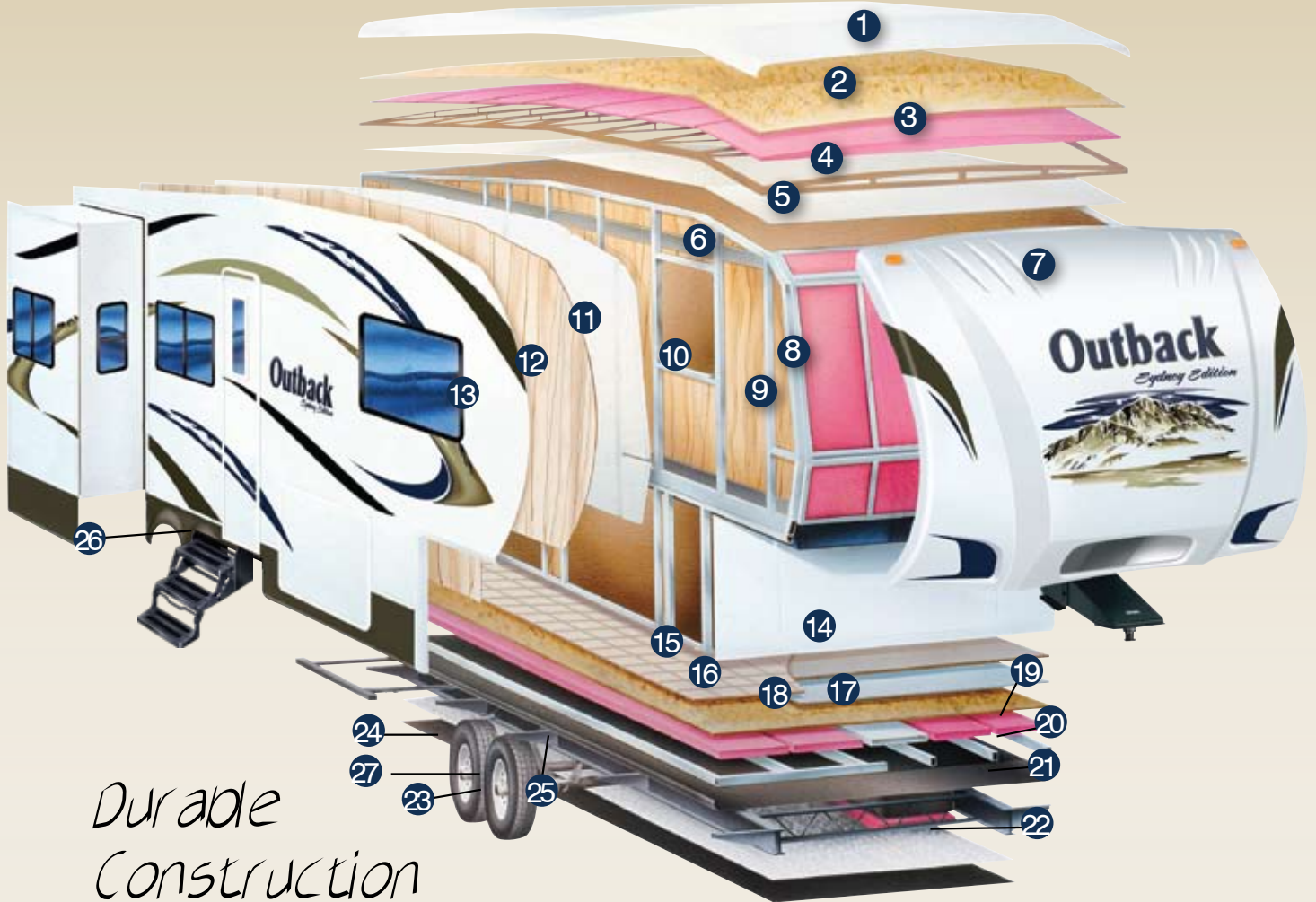
### Fifth Wheels



COMING SOON!

Measurements	320FDB	321FRL	325FRE	329FBH	330FRL
Shipping Weight	9985	9515	10,090	9715	TBD
Carrying Capacity	2045	2500	1970	2245	TBD
Hitch Weight	1870	1845	1685	1800	TBD
Exterior Length	36'	35' 1"	36' 2"	36' 2"	TBD
Exterior Width	96"	96"	96"	96"	TBD
Ext. Height - A/C top	12' 4"	12' 4"	12' 4"	12' 4"	TBD
Awning	14'	12'	11'	14'	TBD
LP Capacity (lbs.)	60	60	60	60	TBD
Fresh Water (gal.)	50	50	50	50	TBD
Grey Water (gal.)	80	80	80	80	TBD
Waste Water (gal.)	40	40	40	40	TBD

R-values	
Roof	R-14
Floor	R-14
Wall	R-9



*Durable  
Construction*

**ROOF**

- 1 Seamless One-Piece EPDM Rubber Roof
- 2 3/8" Fully Walkable Wood Decking
- 3 R-14 Blanket Insulation
- 4 5" Radius Roof Trusses
- 5 1/8" Vinyl Protected Ceiling Panel

**SIDEWALL**

- 6 Metal Backing EGG Strips
- 7 Aerodynamic Radius High Gloss Front Fiberglass Cap w/ Hitch Vision
- 8 R-9 Blanket Fiberglass Insulation Endwalls
- 9 2" Box Welded Aluminum Side and End Walls
- 10 Corner Radius Window Inserts
- 11 R-9 Solid Block Foam Insulation
- 12 1/8" Luan Wood Backing
- 13 Gel Coated Fiberglass Exterior

**FLOOR**

- 14 High Density Residential Carpet w/ Stain Resistance
- 15 Residential Grade Linoleum
- 16 Seamless 5/8" Treated Wood Floor Decking
- 17 Residential In Floor Ducted Heat
- 18 R-14 Blanket In Floor Insulation
- 19 3" Welded Box Frame Aluminum Floor Joists, 13" on Center
- 20 Darco Wrap Vapor Barrier
- 21 8" to 10" "Powder Coated" Steel I-beam Frame
- 22 One Piece, Polypropylene Enclosed and Heated Underbelly
- 23 16" Radial Tires with 12" Electric Brakes
- 24 EZ Lube Axles
- 25 Leaf Spring Suspension System
- 26 Entry Step Light
- 27 Equaflex Rubber Equalizer System

## Standards

### Living Area

- Rich residential cherry hardwood cabinetry with a touch of butter rum cream thermofoil raised panel doors
- Air bed sleeper sofa
- Large panoramic windows
- Pre-drilled and screwed cabinetry
- 36" flush floor slides
- Access door under dinette
- Etched glass upper cabinets
- Custom designed box valances with soft curtains
- Pleated shades
- Linoleum flooring
- Deep wood side drawers with full extension steel guides
- Skylight (most models)
- 6'2" extra tall slide out with 16" cabinets
- Water, soil, stain resistant fabrics
- Large overhead cabinets
- Decorative wall lights
- Residential air bed sleeper sofa\*
- 32" LCD HDTV flat screen\*
- Central command center
- Fireplace (325 FRE only)

### Kitchen

- 60/40 deep sink with 3" drain
- Trash can storage
- High rise faucet
- Utensil tray
- Microwave
- 3 burner range
- Oven\*

### Bedroom

- Deluxe innerspring mattress
- TV hook-up
- Solid wood slider bedroom door
- His and her wall lights
- Deluxe wardrobe
- Residential bedspread with headboard
- Bedroom speakers

### Bathroom

- Residential Neo-angle shower
- Bathroom vent cover
- Glass shower door
- Residential height vanity
- Porcelain foot flush toilet
- Deluxe medicine cabinet

### Appliances

- AM/FM/CD/ stereo with DVD player and MP3 hook-up
- 8 cu. ft. two door refrigerator
- 3 burner range
- 6 Gallon gas/electric DSI water heater and by-pass with 16.2 gallons per hour "quick recovery"\*
- Wall mounted thermostat controlled AC
- 30,000 BTU furnace

### Exterior Standards

- Black framed tinted jalousie safety glass windows
- Extra large baggage doors, 1" thick with continuous hinge and rubber D-seal
- Folding entry grab handle
- Extra wide 30" radius main entry doors\*
- Hitch light
- Hitch vision mirror with docking lights
- Satellite prep
- Molded front fiberglass cap
- Extended drip caps, full length drip rails
- Two security lights (one on each side)\*
- Heated enclosed underbelly including tanks and valves
- Ladder
- Porch light
- Snap pins on front jacks
- Exterior 120V receptacle
- Weather encapsulated body trim
- Automotive style fender skirt
- Exterior speakers
- EZ lube axles
- Electric front jacks\*
- Electric awning
- 16" spare tire, carrier & cover
- Outside camp kitchen\* (most models)
- Exterior quick connect LP hook-up

### Walls – Construction

- 2" welded aluminum framed side walls and end walls
- Solid block foam R9 insulation

### Roof

- 5" tapered truss on 16" centers
- 3/8" roof decking
- One-piece EPMD rubber roof
- R14 blanket insulation

### Floor

- 3" welded aluminum floor joist 13" center
- 5'8" seamless one-piece floor decking
- R14 blanket insulation
- Wrapped vapor barrier
- Polypropylene enclosed heated underbelly enclosed tanks and valves

### Chassis

- Leaf spring equalizing suspension system
- 10" powder coated I-beam
- EZ lube axles
- 12" electric brakes
- 235 80R16E radial tires\*
- Aluminum wheels
- Equaflex rubber equalizer system
- Wired, prepped 2nd A/C

### Utilities

- 75-amp converter
- 2 – 30 lbs. LP bottles with auto changeover
- TV antenna with booster cable TV
- 50-amp shore power line with detachable cord

### Safety

- LP leak detector
- Smoke detector
- Carbon monoxide detector\*
- Fire extinguisher
- Tinted safety glass windows
- Break-away switch
- Manual slide backup on all electric slide outs

## Options

- Designer Package
- Comfort Package
- Oven
- Air bed sleeper sofa
- 32" LCD TV
- Large radius entry door
- RVIA
- 6 gallon gas/electric DSI water heater bypass with 16.2 gallons per hour "quick recovery"
- Electric front jacks
- Carbon monoxide detector
- Free standing table and chairs (2)
- Stabilizer jacks (2)
- Radial tires
- Aluminum wheels
- Security lights (one on each side)
- Outside camp kitchen (most models)
- 16" spare tire, carrier, and cover
- 50-amp service and prepped for 2nd A/C

### Sydney Comfort Package\*

- Roof air conditioner
- TV antenna with booster
- Electric patio awning
- AM/FM/CD stereo with DVD player and MP3 hook-up
- Folding entry handle
- Satellite prep
- Outback air vent

### Sydney Designer Package\*

- Wallpaper border
- Shower door
- Bathroom accessories
- Utensil tray
- Residential air bed sleeper sofa
- 6 panel raised refrigerator panels
- trash container

\*Denotes STD Build Options



Do you like kitchen storage? Check out the storage in this 321 FRL Sydney. Notice the countertop space and the full extension drawer glides.

# Outback

*Sydney Edition*



**Keystone RV  
Company**

2642 Hackberry Dr. | Goshen, IN 46526

574.535.2100 | [www.keystone-outback.com](http://www.keystone-outback.com)

Product information is as accurate as possible as of the date of publication of this brochure. Features, floor plans, and specifications are subject to change without notice. Please also consult Keystone's web site at [keystonerv.com](http://keystonerv.com) for more current product information and specifications. Tow Vehicle Disclaimer: CAUTION: Owners of Keystone recreational vehicles are solely responsible for the selection and proper use of tow vehicles. All customers should consult with a motor vehicle manufacturer or their dealer concerning the purchase and use of suitable tow vehicles for Keystone products. Keystone disclaims any liability or damages suffered as a result of the selection, operation, use or misuse of a tow vehicle. KEYSTONE'S LIMITED WARRANTY DOES NOT COVER DAMAGE TO THE RECREATIONAL VEHICLE OR THE TOW VEHICLE AS A RESULT OF THE SELECTION, OPERATION, USE OR MISUSE OF THE TOW VEHICLE. November 2009