



Crossover From Tradition to Innovation

INTERIOR FEATURES

Cherry Cabinets
Linoleum front to back
84" Interior Height
Tall (5'11") Slide Room Height
Flush Floor Slides in All Models
44" Dinette in Slide-out
Skylights Over Dinette (2)
Rounded Style Cabinets –Kitchen, Living
Room Overheads
Large Overhead Cabinets in Slide w/Extra
Shelf
Night Stands Both Sides of Bed w/Lights and
Outlets
6 Gal Gas/Electric DSI Water Heater
13.5 A/C Ducted
Double Door Refer
Oven w/3-burner High Output Cook Top
Carousel Microwave
High Rise Faucet in Kitchen
AM/FM/CD with 4 Recessed Speakers
Cable & Satellite TV Prep
Sofa Throw Pillows
Tub Surround
Double Framed Shower Bases
Glass Shower Door (neo angle models)

CONSTRUCTION & EXTERIOR

Front Fiberglass Cap
3/8" Walk-on-roof
One piece rubber roof
Radius Truss Roof Rafters
5/8" Tongue & Groove Plywood Floor
Decking
Power Coated, Rust Resistant Frame
Radius Rolled and Painted Bottom Metal
Stabilizer Jacks (2 sets)
Double and Triple, Deep Drop Entry Steps
30" Radius Entrance Door
Radius Luggage Doors
Enclosed and Vented LP Storage
Compartment
30# LP Bottles w/Auto Changeover
Water Heater Bypass
Patio Awning w/Drip Rail and Down Spouts
Scare Light (1)
TV Antenna w/12 Volt Booster

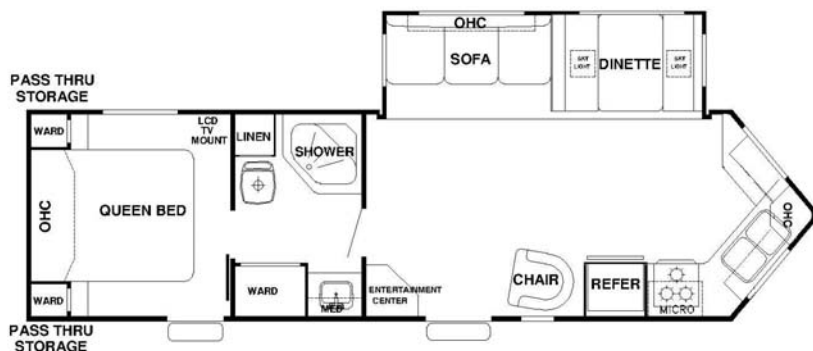
POPULAR OPTIONS

➤2 exterior speakers
➤Storage Door at Sofa
➤Rear Ladder
➤Outside Shower
➤SpareTire, Carrier and Cover with Logo
➤Safety Glass Tinted Windows
➤Enclosed Tanks (Travel Trailer)
➤Thermopane Windows
➤Power Awning
➤Electric Front Jack
➤Heater Holding Tanks
➤15,000 BTU A/C
➤Air-bed Sofa
➤Free Standing Dinette w/4 chairs
➤Carbon Monoxide Detector – Mandatory
➤Flat-screen 26" LCD television
➤X75 Surround Sound
➤DVD/CD/AM/FM Stereo
➤10, 000 Gallon Water Filter System
➤Sink Cover Range Cover
➤Sky Light Over Tub
➤Bedroom Roof Vent
➤Ceiling Fan 12 Volt in bedroom
➤40" Dinette Drawer
➤Bar Stools (2) by floor plan

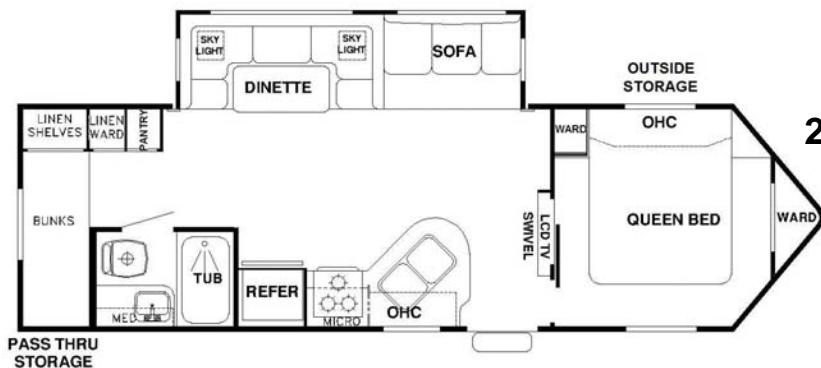
V-Cross ST Floor Plan Line up



26V FBS



29V FKS



27V BHS



Specifications	26V FBS	27V BHS	29V FKS
Length	29'4"	30'2"	31'9"
UVW	6,556	6,745	6,801
GVW	11,156	10,945	11,359
Hitch weight	996	785	1,199
Freshwater Capacity	50	50	50
Grey tank(s)	41	41	41
Black tank	41	41	41
Furnace (Btu)	30,000	30,000	30,000
Interior height	84"	84"	84"

All illustration and specifications contained in this literature are based on the latest product information at time of publication. Forest River reserves the right to make changes in prices, colors, materials, equipment and specifications at anytime without notice and assumes no responsibility for any error in this literature . All units are shipped F.O.B. Goshen, Indiana.