

WIDE OPEN

MAX
ENDURA 

Luxury Toy Haulers



Transform. Only Wide Open allows you to swing open the sealed vapor walls between the main living quarters and the garage allowing you to transform the garage into a fully functional living space of its own. Utilize every square foot of your trailer for whatever you choose.



WIDE OPEN

Wide Open is more than just a toy hauler; it is a luxury 5th wheel with a multi-purpose garage area. Wide Open provides you with more amenities, the most innovative floor plans and a style that is often imitated but never duplicated. Whether you are a motorcycle lover, dirt bike or ATV rider, drive sand rails, in need golf cart storage, or just want a functional temperature controlled bedroom for your dogs and kids to stay that converts into a screened-in patio room, Wide Open has you covered. The Wide Open is a toy hauler built by toy hauler enthusiasts for toy hauler enthusiasts, we understand that it is more than a toy hauler.. it's a lifestyle. We stand by our product and assure they are manufactured with the utmost precision and will stand the test of time so that your choice of Wide Open will pay you back with years of hassle-free excitement.



The Wide Open offers the ultimate in luxury living with some models receiving a massive 14 cu ft refrigerator, bath and a half, large countertop surface, double basin stainless steel sink and glass cook-tops with large convection oven / microwave combination units.





The 33Max feels huge and inviting. Large Slides provide more room for you and your guests to relax comfortably. Our patio glass sliding door option opens the living space up dramatically and allows the garage area to be completely sealed yet part of the living area.

Standard Features

Construction

- » 102" Full Wide Body Design
- » 12" I-Beam w/ tubular cross members
- » Aircraft Grade, Fully Welded Aluminum Framed Walls, Roof and Floor
- » Vacuum Bonded Laminated Walls, Roof & Floor
- » EPS Foam Insulation Walls 9, Roof 18 Floor 24
- » 101" long cargo ramp door
- » 3,000 LBS Rated Ramp Door
- » Hinge Integrated Ramp Door Spring With Grease Zerks
- » Ramp Door Lock Closure With Anti-Theft Locking System
- » 24" Dove Tail At Ramp Door
- » Radius Safety Glass Window
- » Aluminum Rims
- » Fully Enclosed Underbelly
- » 6 Wheel Electric Brakes
- » All Hardwood Cabinets
- » All Wood Drawers w/ Drawer Glides and Rollers
- » High Pressure Laminate Countertops

Galley

- » Large 14cu Ft 4 door Refrigerator (some models)
- » 3 Burner High Output Range
- » Lighted Range Hood With Power Vent
- » Double Basin Stainless Steel Sink
- » High Rise Pull-Out Faucet

Bath

- » Porcelain Foot Pedal Flush Marine Toilet
- » Waterfall Glass Shower Door
- » One-Piece ABS Shower Surround
- » Skylight Over Shower
- » Medicine Cabinet Over Sink
- » Power Roof Vent

Cargo Area

- » 98" Interior Width

- » 111" Interior Height
- » 95" Garage Door Width
- » Beaded Fiberglass Interior Walls
- » Floor Drains
- » Vacuum Bonded, Laminated Vapor Barrier Wall
- » Passive Air Vents
- » Large Overhead Garage Cabinets
- » Mini-Blinds Over All Windows
- » Power Roof Vent
- » Rotair Ducted Heat Supply
- » Two 110V Outlets
- » Pre-Wired for A/C unit
- » Cable Jack

Master Suite

- » Hardwood Slide Out Fascia and Corner Blocks
- » All Hardwood Drawers with Dual Sided Residential Drawer Guides and Rollers
- » Innerspring Queen Mattress
- » Residential Color Coordinated Headboard
- » Color Coordinated Bedspread
- » Full Wardrobe w/ Two Mirrored Slider Doors
- » Under Bed Storage With Gas Strut Assist
- » Two Throw Pillows
- » 12V Outlet
- » Separation door for Bedroom
- » Pre-Wired for A/C unit

Exterior

- » Aero Molded Composite Hi-Gloss Front Cap With Lights
- » Separated Garage Door
- » Aerodynamic ABS Fenders
- » Huge Pass Through Storage
- » Triple Entry Step At Main Door
- » 21' Electric Awning
- » 2 Ramp Door Flood Lights
- » Hitch Light
- » Rear Stabilizer Jacks
- » Detachable Roof Ladder
- » Patio Light

Entertainment

- » TV Antenna, Booster Package
- » DSS Pre-Wired
- » Two Exterior Speaker systems with kill switch
- » Two Telephone Jacks

Systems

- » 50 Amp Service
- » 12 Gallon Gas/Electric Water Heater with DSI
- » Water Bypass System
- » Demand Water Pump
- » 80 Amp Electronic Converter
- » 40,000BTU Furnace
- » Twin 30 lbs. Cylinders
- » Outside Shower with pressure nozzle
- » Motorized Landing Legs
- » 15,000 BTU A/C With Quick Cool
- » Battery Disconnect Switch
- » Black and Grey Tank Flush

Safety

- » LP Leak Detector
- » Safety Glass Windows
- » Carbon Monoxide Detector
- » Fire Extinguisher
- » Smoke Detector
- » Ground Fault Interrupter (GFI) Circuit
- » Breakaway Switch

Décor

- » Color Coordinated Pleated Cloth Shades Throughout Living Area
- » Antique 12v Ceiling Fan
- » Decorator Mirrors
- » Box Valances with Hard Lambrequins

Luxury Value Package

- » Comfort Plus Innerspring Furniture
- » 32" Flat screen TV
- » 20" Flat screen TV in Bedroom
- » High Output AM/FM/CD/ DVD Player with High Output Speakers, Amplifier, and Sub-Woofer

- » Convection Microwave Option
- » Solid Hardwood (Brentwood Cherry) Cabinets and Stiles
- » Solid Hardwood (Brentwood Cherry) Slide Room Fascia
- » Residential Brentwood Cherry Interior Doors
- » Elegant Crown Molding In Living Area

Exterior Value Package

- » 16" Aluminum Racing Rims
- » LT 245/75R16 Tires
- » Large Garage Windows
- » 3- 6,000lbs. Axles
- » Generator Prep. With Fuel Tank
- » LED Marker Lights and Docking Station Light
- » Second Fuel Tank With Outside Pump
- » 21' Electric Awning
- » Vacuum Bonded Aluminum Super Structure
- » Super Slick High Gloss Gel Coat

Popular Options

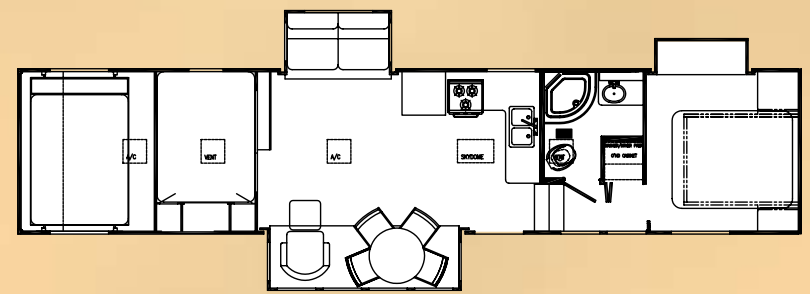
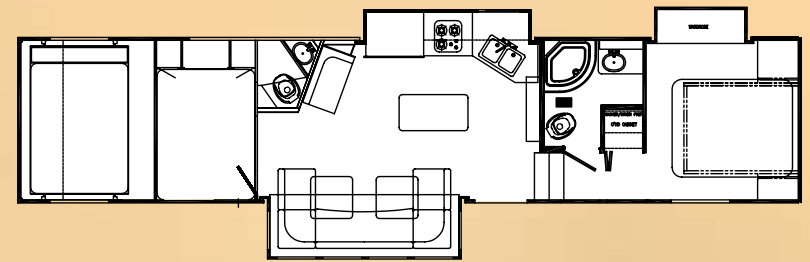
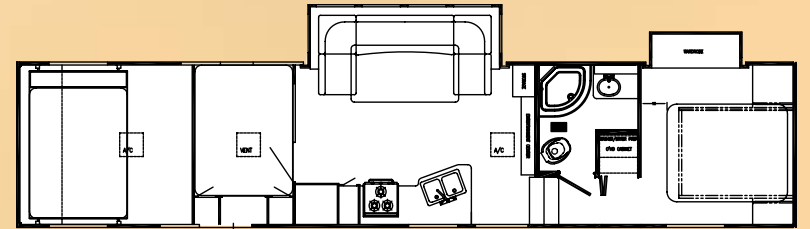
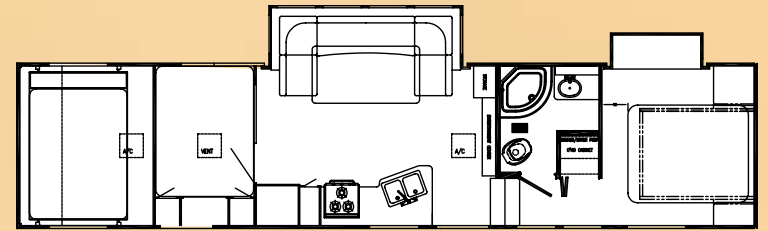
- » Mor-Ryde Dampened Pin Box
- » Rear Cargo Screen Wall
- » Full Body Paint with (3 color choices)
- » Thermal Pane Windows
- » Solid Surface Countertops
- » 2nd 13,500 BTU Roof A/C IPO Roof Vent
- » 3rd 13,500 BTU Roof A/C IPO Roof Vent
- » Basement Pull Out TV
- » Back Up& Security System With Monitor Panel
- » Generator Package
- » F.S. Dinette W/4 Chairs
- » Rear Power Beds With Roll-Over Sofa
- » Patio Door Between Garage & Living Area
- » XL Option (Extended Living) Swinging Vapor wall doors for extended living room
- » Remote Control Set up (Remote control for exterior lights, awning and slide outs)
- » Central Vacuum System
- » Electric Rear Jacks

EXTERIOR OPTIONS



	33 MAX	36 MAX	37 MAX	39 MAX	40 MAX
Overall Length	35'	37'11"	39'11"	40'2"	40'10"
Garage Dimensions	10' x 8' 2"	12' x 8' 2"	14' x 8' 2"	12' x 8' 2"	12' x 8' 2"
Ext. Height Apx. w/ A/C	13'	13'	13'	13'	13'
Apx. Gross Vehicle Weight	11,800	12,700	12,900	13,400	13,200
Gross Vehicle Weight Apx.	18,000	18,000	18,000	18,000	18,000
Cargo Carrying Cap. Apx.	6,200	5,300	5,100	4,600	4,800
Aprox. Hitch Weight	2,100	2,300	2,300	2,500	2,500
Fresh Water (Gal.)	112	112	112	112	112
Grey Tank Capacity	99 Gal.	99 Gal.	99 Gal.	84 Gal.	54 Gal.
Black Tank Capacity	54 Gal.	54 Gal.	54 Gal.	84 Gal.	54 Gal.
Water Heater	12 Gal.	12 Gal.	12 Gal.	12 Gal.	12 Gal.
Tire Size	16"	16"	16"	16"	16"
Sleeping Capacity	8 to 10	10 to 12	10 to 12	10 to 12	10 to 12

33 MAX
36 MAX
37 MAX
39 MAX
40 MAX



SADDLE



MAX FUSION



MAX STONE



MAX MAHOGANY



Centralized shore hookups with exterior shower



Massive North-South Bedroom

Floor drains and further ventilation



Heavy duty, powerful stereo systems up to 1500 watts

Superior ventilation is the garage



An extra 1/2 bath in the garage



ENDURAMAX POST OFFICE BOX 1005, NAPPANEE, IN 46550

YOUR ENDURAMAX DEALER:

For more information and available options, contact your local Gulf Stream dealer, www.gulfstreamRV.com or Gulf Stream Coach, Inc. Gulf Stream Coach, Inc., reserves the right to make changes in prices, colors, materials, components and specifications and to discontinue models at any time without notice or obligation. Gulf Stream Coach, Inc., assumes no responsibility for any error in type or print reproduction of specifications or floorplans in this brochure. Photographs may show equipment or items that are optional and are not included in the purchase price of the coach. Test drive and review a current model at your nearest Gulf Stream dealer. © 2008 Gulf Stream Coach, Inc., Nappanee, Indiana U.S.A. 11/08

24 MONTH WARRANTY ON STRUCTURAL COMPONENTS*

1 year total use warranty under normal use against defects in material and/or workmanship in construction and original components. *For purposes of this warranty, "Structural components" shall be limited to the structure of the side walls, front and back walls, roof and floor. See the official written Gulf Stream Coach, Inc. Warranty for details.

In addition to our standard one year warranty, Gulf Stream Coach, Inc., offers an exclusive 24 month warranty on structural components. In addition, major component manufacturers are providing 24 month warranties on their products installed in Gulf Stream units such as refrigerators, antenna, furnace, water heater, air conditioner, awning, range, microwave and more. See the official written Gulf Stream Coach, Inc., Warranty for details.

*for purposes of this warranty, "structural components" shall be limited to the structure of the side walls, front and back walls, roof and floor.

www.enduramaxrv.com