

# SALEM

DESTINATION TRAVEL TRAILERS

PT/XL





- A. Triple Entry Steps
- B. 102 in. Exterior Width for Increased Living Space
- C. Tinted Windows
- D. Hitch Light
- E. Standard 60" Patio Door
- F. 15" Radial Tires (16" with Optional Fiberglass Exterior)
- G. 12" I-Beam Powder-Coated Frame with Cambered Chassis
- H. 5/8" Tongue & Groove Plywood Flooring
- I. Carpet w/ Padding
- J. Fender Skirt
- K. 2" Wall Studs 16" on Center
- L. 2" X 3" Floor Joists 12" on Center
- M. 15K BTU Ducted A/C (13.5K on XL)
- N. Seamless Rubber Roof (12 yr. Warranty)
- O. 3/8" Roof Decking (Full Walk-On Roof)
- P. R-7 Fiberglass insulation Throughout
- Q. Dual Bottle cover w Easy Access
- R. 5" Truss Roof Rafters (16" On Center)
- S. Scare Light
- T. .024 Aluminum Siding (Fiberglass Opt.)



Standard PT Black Appliances with Free Standing Range



Standard PT Deluxe Window Package w/Free Standing Dinette



403FB Bunk with La-Z-Boy D



# SALEM PT STANDARDS



403FB with La-Z-Boy Decor

- |  |  |
|--|--|
| <ol style="list-style-type: none"> <li>1. 84" Interior Height and 102" Interior Width</li> <li>2. Raised Panel Wood Doors</li> <li>3. 60" Sliding Glass Patio Door w/Vertical Blinds</li> <li>4. Night Shades (Optional)</li> <li>5. Etched Glass overhead Doors In Slideout</li> <li>6. Matching "Bull Nose" Countertops</li> </ol> | <ol style="list-style-type: none"> <li>7. Linoleum Armstrong™ Flooring</li> <li>8. Four (4) Cube Speaker Sound System</li> <li>9. Swing Arm Reading Light</li> <li>10. 15K BTU Ducted Air Conditioning</li> <li>11. Premium Sound System</li> <li>12. Metal Drawer Guides</li> </ol> |
|--|--|



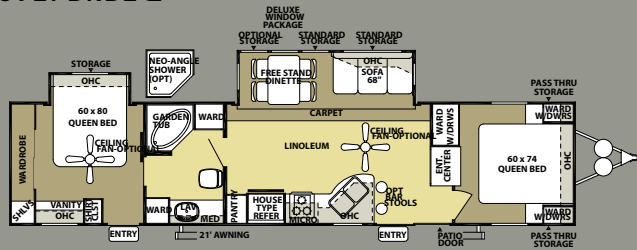
decor



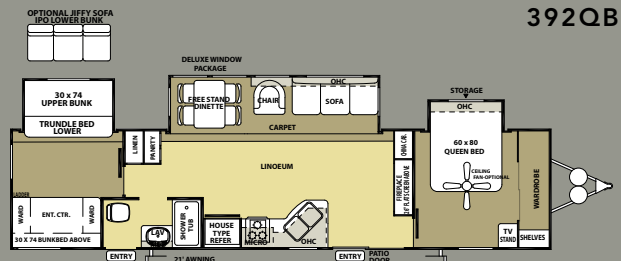
392QBEC with Sienna Rust Decor

# SALEM PT

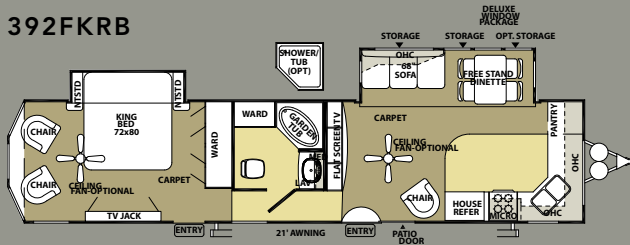
392FBRB2Q



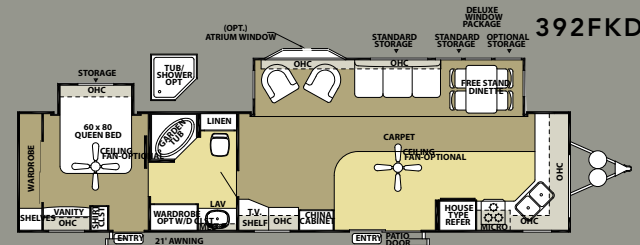
392QBEC



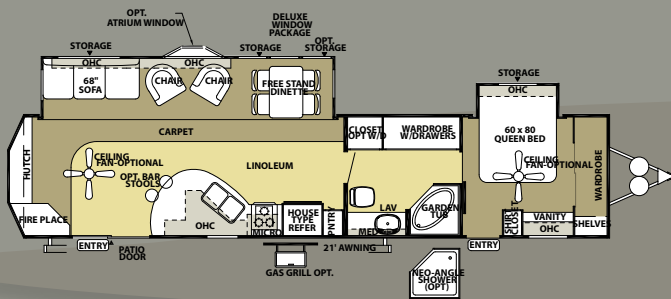
392FKRB



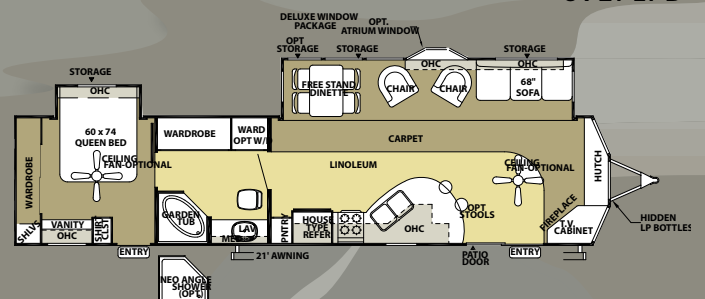
392FKDS



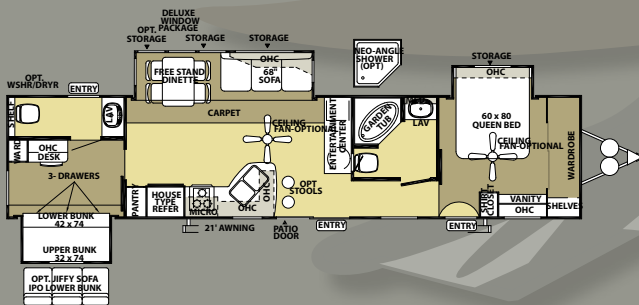
392RLDS



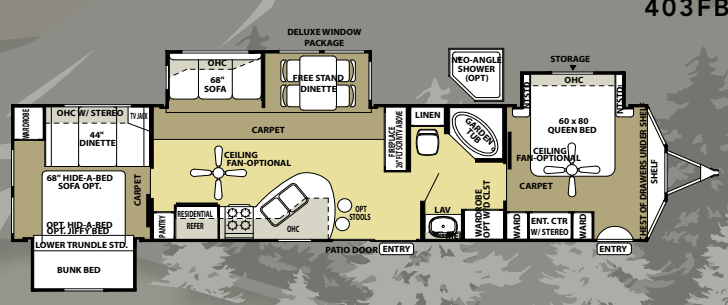
392FLFB



402-2B



403FB



## SALEM PT SPECIFICATIONS

	392QBEC	392FBRB2Q	392FKRB	392FKDS	392RLDS	392FLFB	402 2B	403FB
Hitch Weight (lb)	1405	1000	1375	1550	1150	1500	1300	1385
Axle Weight	9175	8600	8090	8520	8980	8700	9130	9685
Dry Ship Weight	10580	9600	9485	10070	10130	10200	10430	11070
GVWR	11805	11400	11535	11950	11310	11660	13300	13385
CCC (Cargo Capacity)	1225	1740	2070	1820	1120	1400	2810	2255
Ext Length	42'	42'	42'5"	42'	42'	42'	42'	42'
Ext Height	11' 9"	11' 9"	11' 9"	11' 9"	11' 9"	11' 9"	11' 9"	11' 9"
Int Height	84"	84"	84"	84"	84"	84"	84"	84"
Fresh Water Cap (gal)	42	42	42	42	42	42	42	42
Black Water Cap (gal)	45	35	45	45	45	27	75	35
Grey Water Cap (gal)	43	43	64	64	43	38	67	43
Tire Size (in)	15"	15"	15"	15"	15"	15"	16"	15"
Awning Size (ft)	21'	21'	21'	21'	21'	21'	21'	21'

All lengths include bumper and hitch



5/8" 5-Ply Tongue in Groove Floor Decking



10 Blade Fantastic™ Fan



# SALEM PT Standards and Options

## COMFORT AND CONVENIENCE

- 102" Exterior Width for Increased Living Space
- 84" Interior Height
- Black Framed Tinted Glass Windows
- WaterPur™ Whole House Water Filtration System
- Water Heater By-Pass
- 20-gallon Electric DSI Water Heater
- Fresh Water Tank
- Holding Tanks
- Double Entry Radius Doors
- Ducted Dometic® 15,000 BTU Central Air Conditioner with Quick Cool Feature
- In-Floor Ducted Heat with 40K BTU Electric Furnace
- Stain Resistant Carpet with Padding
- Armstrong® ToughGuard™ Plank Wood Linoleum Flooring
- Flush-Floor Hydraulic Slide Rooms with Manual or Electric
- Systems Monitor Panel
- 12 Volt Lighting
- 50 amp Electrical Service and 65 amp 12 Volt Converter
- Solid Oak Drawer Fronts with Wood Sides
- Mortise and Tenon Cabinet Doors
- 26-inch LCD/HD T.V. (Select Floorplan)

## KITCHEN

- Color Coordinated "Bull Nose" Countertop
- Raised Panel Cabinet Upper Doors
- 20" Freestanding 4 Burner Gas Range with Oven
- 18 cu. Ft. Residential Electric Refrigerator with Icemaker
- Microwave with Carousel and Range Hood
- Acrylic 60/40 Residential Style Kitchen Sink
- High-Rise Residential Style Faucet
- Sink Cover (1)
- Flip Down Silverware Storage (per floorplan)
- Pantry

## LIVING ROOM

- Swivel Rocker Chair(s) (per floorplan)
- AM/FM/CD/Cassette Stereo System w/ remote control
- Surround Sound TV Hook-up
- TV Antenna with Booster
- Cable and Satellite Ready
- 60" Glass Sliding Patio Door with Vertical Blinds
- Extra Large Picture Window at Dinette (slide-out models)
- Full Length Angled Overhead Cabinets with Etched Glass in Slide-outs (most models)
- Large External Luggage Doors behind Sofa and Dinette
- Coordinating Wallpaper Border
- Slide-out Fascia

## BEDROOM

- Bedspreads and Bunkspreads
- Bedroom Roof Vent
- Plywood Bed and Bunk Platforms
- TV Shelf
- Cable TV Hook-up
- Stain Resistant Carpet w/ Padding
- Solid Privacy Doors
- Slide-out Fascia
- Full Length Mirrored Wardrobe Closet with 51 cu ft. Storage (per floorplan)

## BATHROOM

- Built-in Wood Medicine Cabinet and Mirror
- Ceiling Light with Convenient Wall Switch
- China Foot Flush Toilet(s)
- Glass Shower Door (Neo-Angled Showers)
- ABS Tub and Shower with One-piece Surround
- Oversized Garden Tub (per floorplan)
- 12" 10-blade Fantastic Bath Fan™

## EXTERIOR

- Smooth Fiberglass Radius Baggage Doors with Thumb Pulls and Holdbacks
- A & E Side Awning-One Piece Vinyl
- Diamond Plate Rock Guard (n/a 392FLFB)
- One-piece Rock Guard Awning (Front Window models)
- 15" Radial Tires
- Entry Assist Handle
- 30 lb. Double LP Tanks with Automatic Change Over
- LP Tank Cover
- Colored Dump Valve Handles
- City Water Fill with Brass Valve

## CONSTRUCTION

- 12" Extruded I-beam Frame
- Cambered Chasis
- Seamless Roto-cast Holding Tanks
- Color Coded Water Lines
- 2" x 3" Floor Joists 12" on Center
- 5/8" 5-ply Tongue and Groove Plywood Floor Decking
- 2" Wall Studs Maximum 16" on Center
- Steel Framed 6' Entrance Doors
- 5" Bowed Truss Roof Rafters
- 3/8" Walk-on Roof Decking
- Seamless One-piece Rubber Roof w/ 12 Year Warranty
- Double Wipe Slide-out Seal
- R-7 Insulation Throughout (Floors, Walls, Ceilings, and Slide-outs)
- Galvanized Steel Wheelwells with Fiberglass Insulation (except slide-outs)

## SECURITY AND SAFETY

- Smoke Detector
- Fire Extinguisher
- Carbon Monoxide Detector
- LP Gas Leak Detector
- Flush Door Latch with Integral Dead Bolt Lock
- Main Entry Step Light with Interior Switch
- Amber Porch Light with Interior Switch
- Main Entry Doorside Scare Light
- Screen Door with Safety Latch
- GFI Receptacles and Covered Patio Outlet
- Welded Heavy Duty Safety Chains
- Hitch Light
- E-Z Open Entry Steps
- Lockable Fiberglass Radius Baggage Doors

## POPULAR OPTIONS

- Autumn Cherry or Fulton Cherry Cabinets
- Safety Glass Black Framed Tinted Windows
- Gelcoat Fiberglass Exterior w/ 16" Tires and 6,000 lb Axles
- Skylight over Tub
- Garden Tub Glass Door (per floorplan)
- Garden Shower with Glass Door (per floorplan)
- Extra Large 8 cu-ft Double Door RV Refrigerator (IPO House Type)
- La-Z-Boy® Living Room Furniture (A Forest River Exclusive\*)
- Double Sofa Hide-A-Bed
- 74" Air Hide-A-Bed
- Atrium Window
- Phone Jack
- DVD Stereo 10+2 Surround Sound System
- Bar Stools (per floorplan)
- Stabilizer Jacks
- Detachable Hitch
- Outside Shower
- 10-gallon Gas/Electric DSI Water Heater (IPO 20 gal Electric)
- Slide Room Awning(s)
- Ceiling Paddle Fan(s) w/ Wall Switch
- Double Insulation (Floor and Roof)
- Nite Shades
- Thermostatically Controlled Heated Holding Tanks
- iPod Docking Station

**L A Z B O Y**®

\*La-Z-Boy has teamed up Exclusively with Forest River to take Legendary Comfort On the Road

## SALEM PT STANDARDS



Serta® Mattresses come standard on ALL PT Models



Whole Unit Water Filter



Comfort-Flex Bed Frame



China Foot Flush Toilet



20 Gallon Water Heater

# SALEM<sub>XL</sub>



352FLFB shown with Caramel Interior

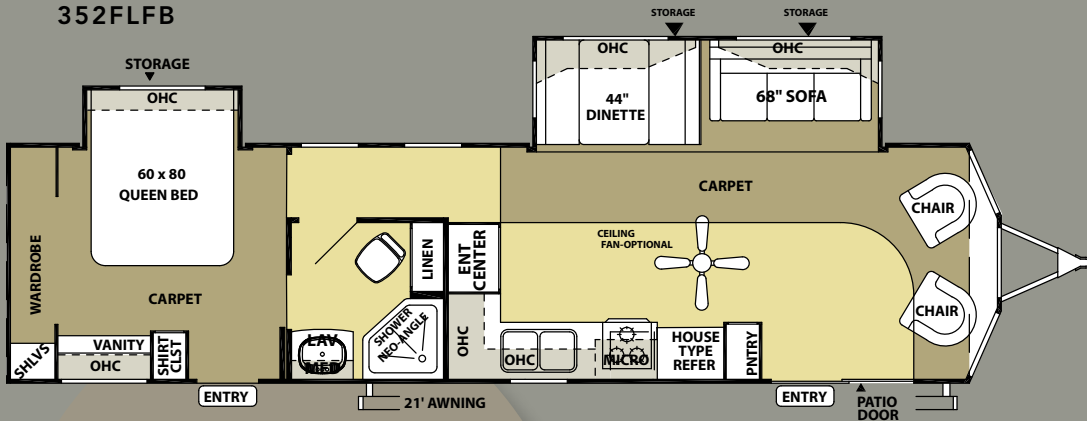
## SALEM XL: BIGGER AND BETTER

The Salem XL line is a perfect match for RV'ers seeking a destination style RV. With our 102" exterior width, bathrooms, bedrooms and walkways are enlarged. We even have 84" interior heights for additional roominess. One look at the Salem XL and you'll appreciate our commitment to comfort.





### 352FLFB

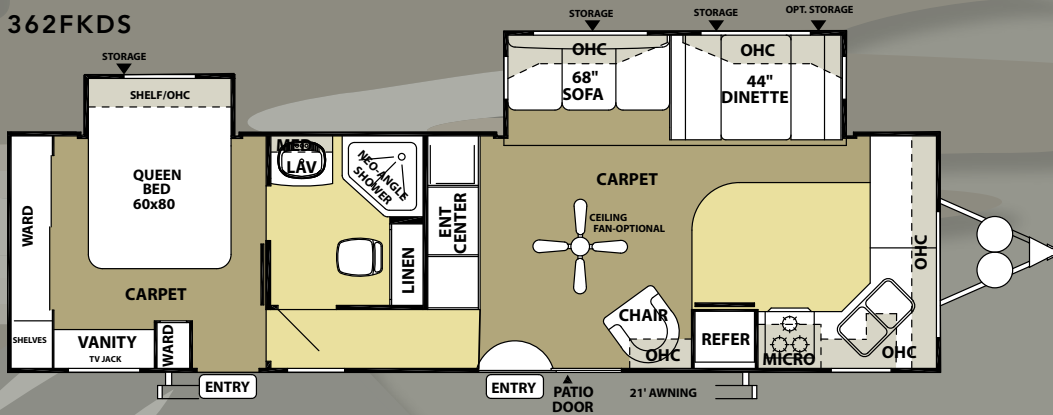


### SALEM XL SPECIFICATIONS

	352FLFB	362FKDS
Hitch Weight (lb)	1280	1000
Axle Weight	7700	7720
Dry Ship Weight	8980	8720
GVWR	11440	11160
CCC (Cargo Capacity)	2400	2440
Ext Length	38' 2"	36' 4"
Ext Height	11' 9"	11' 9"
Int Height	84"	84"
Fresh Water Cap (gal)	42	42
Black Water Cap (gal)	32	43
Grey Water Cap (gal)	43	64
Tire Size (in)	15"	15"
Awning Size (ft)	21'	21'

All lengths include bumper and hitch

### 362FKDS



### SALEM XL STANDARDS



10 Blade Fantastic™ Fan



China Foot Flush Toilet



Whole Unit Water Filter



1 Yr. FREE Coach-Net® Roadside Assistance



Cable Satellite Hook-Up



Optional Ext. Speakers

# SALEM XL Standards and Options

## COMFORT AND CONVENIENCE

- 102" Exterior Width for Increased Living Space
- 84" Interior Height
- Black Framed Tinted Glass Windows
- WaterPur™ Whole House Water Filtration System
- Water Heater By-Pass
- 6-gallon Gas/Electric DSI Water Heater
- Double Entry Doors (most floorplans)
- Pass Thru Storage (per floorplan)
- Dometic® 13,500 BTU Central Air Conditioner with Quick Cool Feature
- In-Floor Ducted Heat
- Stain Resistant Carpet with Padding
- Armstrong® ToughGuard™ Plank Wood Flooring (Linoleum)
- Flush-Floor Slide Rooms
- Systems Monitor Panel
- Jalousie Clamp Ring Radius Windows (Bedroom, Living Room, and Kitchen)
- Solid Oak Drawer Fronts with Wood Sides Mortise and Tenon Cabinet Doors

## KITCHEN

- Raised Panel Cabinet Upper Doors
- 12V Power Range Hood with Light
- Three-Burner High Output Range with 16" Oven
- 18 Cubic Foot Refrigerator
- Microwave with Carousel
- Acrylic 60/40 Residential Style Kitchen Sink
- High-Rise Residential Style Faucet
- Sink Cover (1)
- Built in Knife Holder
- Pantry

## LIVING ROOM

- Swivel Rocker Chair(s) (per floorplan)
- AM/FM/CD/Cassette Stereo System w/ remote control
- 6+2 Forest River Sound System with 100 Watt Subwoofer for True Surround Sound
- Surround Sound TV Hook-up
- TV Antenna with Booster
- Cable and Satellite Ready
- 60" Glass Sliding Patio Door w/ Vertical Blinds
- Extra Large Picture Window at Dinette
- Full Length Angled Overhead Cabinets with Etched Glass in Slide-outs
- Large External Luggage Doors behind Sofa and Dinette
- Extra Large 44" Pedestal Dinette for More Comfortable Dining and Sleeping
- Styled Slide-out Fascia

## BEDROOM

- Fitted Bedspreads and Bunkspreads
- Bedroom Roof Vent
- Plywood Bed and Bunk Platforms
- Lift-up Beds with Gas Struts (per floorplan)
- TV Shelf or Flip Table and Outlet in Bedroom
- Cable TV Hook-up
- Stain Resistant Carpet w/ Padding
- Privacy Doors or Sliding Curtain (per floorplan)

## BATHROOM

- Built-in Wood Medicine Cabinet and Mirror
- Ceiling Light with Convenient Wall Switch
- China Foot Flush Toilet(s)
- Glass Shower Door (Neo-Angled Showers)
- ABS Tub and Shower with One-piece Surround
- Oversized Garden Tub (per floorplan)
- 12" 10-blade Fantastic Bath Fan™

## EXTERIOR

- Smooth Fiberglass Radius Baggage Doors with Thumb Pulls and Holdbacks
- A & E Side Awning One Piece Vinyl
- Diamond Plate Rock Guard (Travel Trailers)
- One-piece Rock Guard Awning (362FKDS)
- 15" Radial Tires
- Entry Assist Handle
- 30 lb. Double LP Tanks with Automatic Change Over
- LP Tank Cover (Travel Trailers)
- City Water Fill with Valve

## CONSTRUCTION

- 10" Extruded I-beam Frame
- Cambered Chasis
- Fresh Water Tank
- 2" x 3" Floor Joists 12" on Center
- 5/8" 5-ply Tongue and Groove Plywood Floor Decking
- 2" Wall Studs Maximum 16" on Center
- Steel Framed 6' Entrance Doors
- 5" Bowed Truss Roof Rafters
- 3/8" Walk-on Roof Decking
- Seamless One-piece Rubber Roof w/12 Year Warranty
- R-7 Insulation

## SECURITY AND SAFETY

- Smoke Detector
- Fire Extinguisher
- Carbon Monoxide Detector
- LP Gas Leak Detector
- Main Entry Step Light with Interior Switch
- Amber Porch Light with Interior Switch
- Main Entry Doorside Scare Light
- Screen Door with Safety Latch
- GFI Receptacles and Covered Patio Outlet
- Welded Heavy Duty Safety Chains (Travel Trailers)
- Hitch Light (Travel Trailers)
- E-Z Open Entry Steps
- Lockable Fiberglass Radius Baggage Doors

## POPULAR OPTIONS

- Autumn Cherry or Fulton Cherry Cabinets
- Safety Glass Black Framed Tinted Windows
- Fiberglass Exterior
- Fiberglass Front Cap (5th Wheel Models)
- 10-gallon Gas/Electric DSI Water Heater
- Skylight over Tub
- Bi-fold Shower Door (per floorplan)
- Garden Shower w/ Glass Door (per floorplan)
- Garden Tub Glass Door (per floorplan)
- Extra Large 8 cu-ft Double Door RV Refrigerator
- Double Sofa Air Hide-A-Bed
- Free Standing Dinette w/4 chairs and Flip Leaf
- Second Drawer under Dinette (n/a with Free Standing Dinette)
- Phone Jack
- Bar Stools (per floorplan)
- Stabilizer Jacks
- Detachable Hitch
- Outside Shower
- Slide Room Awning(s)
- Living Room Ceiling Paddle Fan w/ Wall Switch
- Living Room Carpet in front of Slide Only
- Double Insulation (Floor and Roof)
- Nite Shades
- Thermostatically Controlled Heated Holding Tanks
- iPod Docking Station

## Forest River Encourages You to Buy Locally

Forest River, Inc. strongly encourages our retail customers to purchase from their local dealership whenever possible due to the following factors:

- Our Dealers are as a rule, independently owned and operated businesses. Outside of those customers they personally sold products to, they are not contractually obligated to perform warranty service on Forest River products that were purchased elsewhere. There may be an occasion that you would be required to return to the point of purchase to satisfy warranty requirements.
- Although many dealerships will eventually service products not purchased at their place of business, they will usually take care of their customers and other Forest River customers who are traveling away from their local dealer as they would their own.
- Local purchases allow a customer to establish a relationship with a dealer close to home. This relationship provides the customer with a convenient location for service and support from a "home town" professional.
- The opportunity for a thorough PDI (Pre Delivery Inspection) and product orientation is an additional benefit of buying from your local dealer. Further providing the opportunity for refresher courses or the ability to get questions answered much more conveniently.
- For our Canadian customers, there are also requirements which must be met to bring an RV purchased out of the country to their home. Although not insurmountable, these requirements may involve such things as additional inspections and certifications, taxes and fees. Your local Canadian Dealer is a professional at meeting these requirements.

Forest River's goal is for all RV Owners to fully enjoy their RV experience. In light of this goal, and considering the advantages of buying local, we encourage you to be thorough when determining what product to purchase and which dealer to purchase it from as both are key to your ultimate satisfaction and the realization of your dreams.

L A Z B O Y®

YOUR SALEM DEALER



Forest River, Inc.  
914 C.R. 1  
Elkhart, IN 46514  
(574) 533-5934  
[www.forestriverinc.com](http://www.forestriverinc.com)  
[www.forestriveraccessories.com](http://www.forestriveraccessories.com)