

# VIEWFINDER

by *CruiserRV LLC*

Significantly Different



...for all the  
right reasons!

# Introducing **VIEWFINDER**

CruiserRV, LLC

Aerodynamically designed to be towable by your full size SUV, the ViewFinder offers well designed spaciousness for weekenders or the added comforts demanded by extended stay travelers.



**V19FK** The front "V" kitchen shown has plenty of storage and conveniences built in. The innovative design of the front cap provides an added...60 cubic square feet of space.



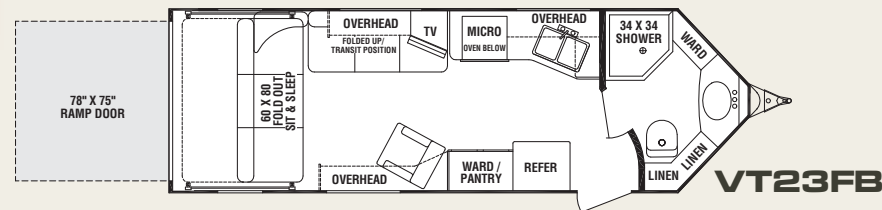
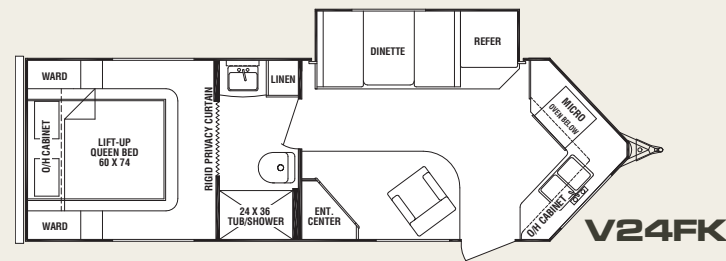
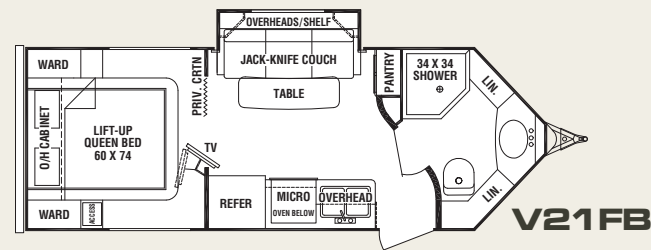
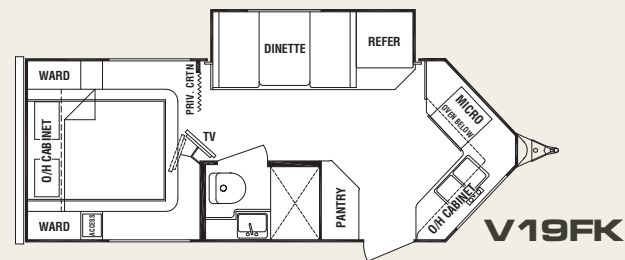
**V21FB** This floorplan offers a side kitchen and versatile sofa slideout.



Beautifully appointed, this interior surrounds you with form and function.



You'll be surprised at the size of the spacious bath.



**Décors**

**Granite**

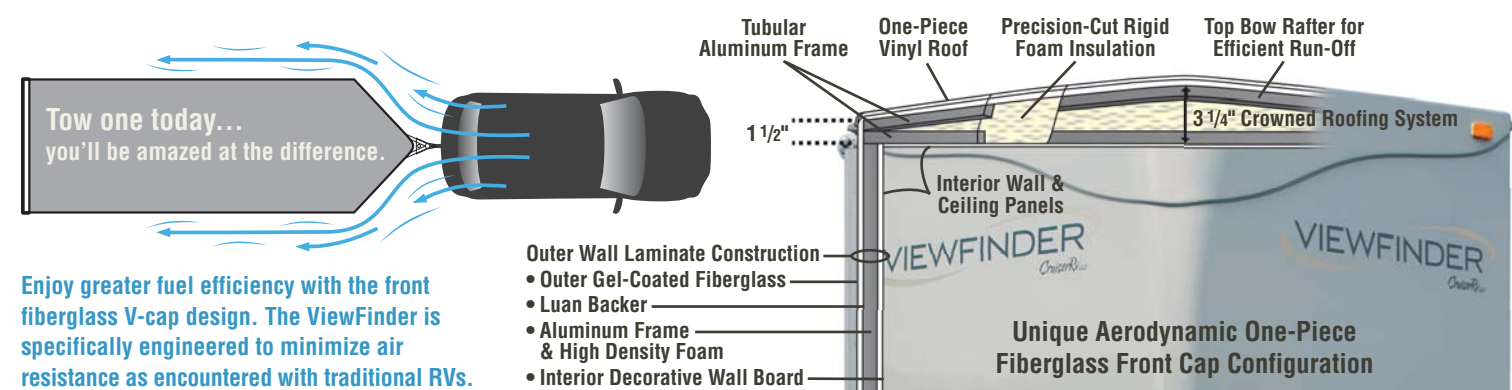
**Sandstone**

ViewFinder	V19FK	V21FB	V24FK	VT23FB
Exterior Length	22'2"	23'4"	26'5"	
Exterior Width	90"	90"	90"	
Exterior Height	9'3"	9'3"	9'3"	
Interior Height	6'6"	6'6"	6'6"	
Bed Size	60 x 74	60 x 74	60 x 74	
Dinette Bed Size	37 x 69	N/A	37 x 69	
Gaucha/Couch Size	N/A	40 x 68	N/A	
Axle Weight (lbs.)	3,480	3,830	4,180	
Hitch Weight (lbs.)	625	530	790	
Dry Weight (lbs.)	4,105	4,360	4,650	
GVWR (lbs.)	6,225	6,130	6,390	
Cargo Capacity (lbs.)	2,120	1,770	1,420	
Fresh Tank (gal.)	36	36	36	
Gray Tank (gal.)	40	40	40	
Black Tank (gal.)	25	27	25	
LP Bottle (lbs.)	40	40	40	
Power Conv. (amps)	55	55	55	
Elect. Ign. Furn. (BTU)	20K	20K	20K	

For specs on this model check out [www.cruiserrv.com](http://www.cruiserrv.com)

\*Cargo capacity does not include weight of water or LP gas. **NOTE:** Weights are approximate and based on standard features. Optional equipment is not included. Cruiser RV, LLC constantly strives to improve its product. All specifications are subject to change without notice or obligation. See your local Cruiser RV dealer today to review a current model.

## Construction/Aerodynamics



Enjoy greater fuel efficiency with the front fiberglass V-cap design. The ViewFinder is specifically engineered to minimize air resistance as encountered with traditional RVs.

## Interior Features



Optional flatscreen TV



Optional stainless steel microwave



Oven / range



Upgraded mattress with down comforter



In-ceiling speakers

## Exterior Features



Waterproof speakers and optional awning



Large rear storage door



Outside spray-away hose



Optional stainless steel BBQ grill



Cast aluminum wheels w/ radial tires

VIEWFINDER  
*CruiserRV*

VIEWFINDER  
*CruiserRV*

## Standard Features

- Fiberglass V aerodynamic cap
- Silver gel coated fiberglass exterior
- Floorplans w/ up to 60 additional cu. ft. with V design
- 7'6" width for ease of towing
- Laminated, crowned roof, ducted
- Ducted heating
- Fully aluminum framed construction
- CD/DVD electronics package
- Interior and exterior speakers
- Lend-A-Hand grab handle
- Cast aluminum wheels with radial tires
- Equa-Flex suspension system
- Stainless steel appliances
- Residential interior trim package
- Roller bearing drawer guides and hidden hinges

## Popular Options

- Low-pro 13.5k ducted A/C
- Electric awning
- Fantastic Vent
- Under mount spare tire
- 19" LCD TV
- Sirius satellite radio
- 6 gal. DSI gas/electric water heater
- Microwave
- Convection microwave
- Outside spray-away with hose
- Outside BBQ grill
- Power front jack
- Bike rack

### Cruiser RV, LLC

7805 North SR 9 • PO Box 130 • Howe, IN 46746

Ph. 260-562-3500 • Fax 260-562-2210

Toll Free 866-277-5630

[www.cruiserrv.com](http://www.cruiserrv.com)



Your Dealer