



CRUISER

CrossRoads

CRUISER
FIFTH WHEELS & TRAVEL TRAILERS



BUILT FOR THE LONG HAUL

CRUISER
CAMPERS & TRAILERS



CF 30SK Shown with Thyme décor and available free standing table and chairs

The Cruiser's signature interior is known for its spacious comfort and easy-living features. Tuscan maple finish accented with designer fabrics, comfortable lounge chairs, and numerous amenities create beautiful living quarters that rival much costlier units. With sturdy, lightweight aluminum construction, most Cruiser fifth wheels can be towed with a half-ton pick-up truck. Cruiser travel trailers feature a special aerodynamic front cap that reduces wind drag and increases fuel efficiency. By utilizing the front cap and hitch area, we've also increased living space for greater comfort and satisfaction.

CRUISER WARRANTY

The best warranty in the industry. For details, please visit our web site at www.crossroadsrv.com. We invite you to compare our quality, value, service program and 2+5 Year Warranty plan with those of our competition. You'll find we are unsurpassed in all four.



CF30SK Kitchen

DESIGNER INTERIORS WITH TUSCAN MAPLE FINISH



CF30SK Bedroom slide-out



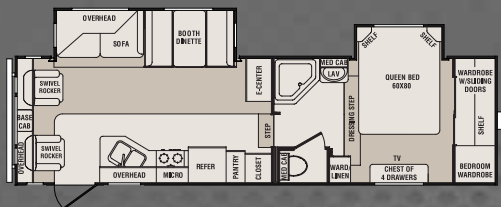
CF31MK Available fire place and desk



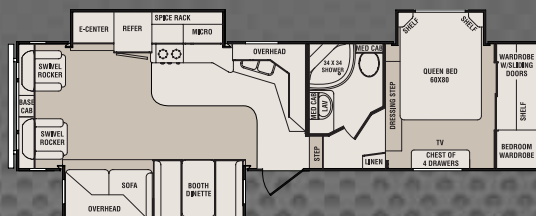
CF32BL Bathroom vanity

FIFTH WHEEL FLOOR PLANS

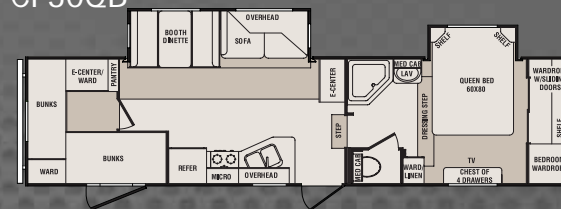
CF28RL



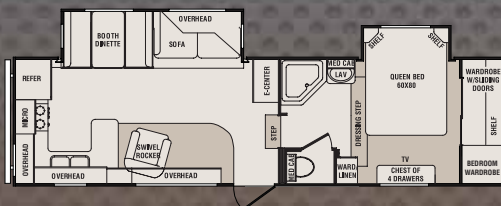
CF30SK



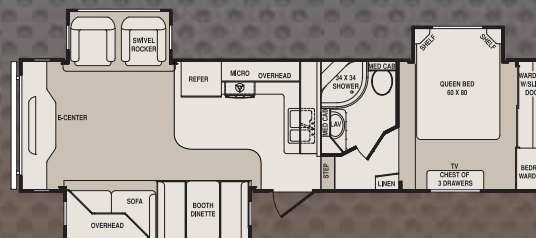
CF30QB



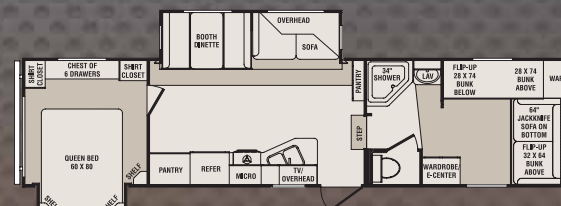
CF29RK



CF31RE



CF31QB

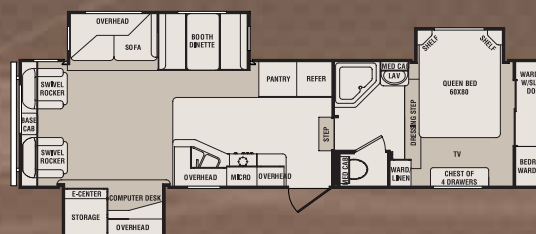


Optional 1/2 bath
OPTIONAL HALF BATH

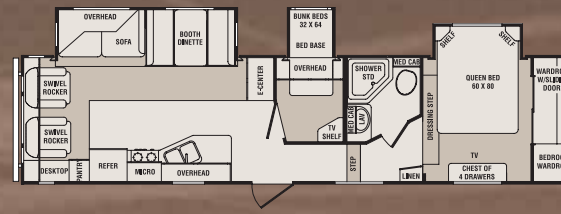
CF29CK



CF31MK



CF32BL



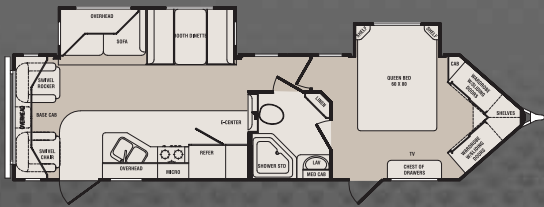
CRUISER FLOOR PLANS

Specifications

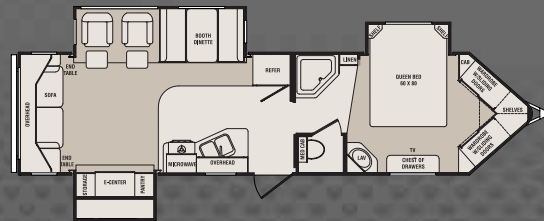
	CF28RL	CF29RK	CF29CK	CF30SK	CF31RE	CF31MK	CF30QB	CF31QB	CF32BL
Dry Weight	7617	7360	7897	8211	7969	8408	8035	7930	8556
Carrying Capacity	3670	3903	3448	3062	3246	2937	3436	3435	2973
Hitch Weight	1666	1632	1714	1642	1584	1714	1840	1734	1898
Axle Weight	5961	5728	6183	6569	6385	6694	6195	6196	6658
Exterior Length	30' 11"	30' 11"	31' 5"	32' 10"	32' 11"	33' 11"	34' 3"	34' 11"	34' 11"
Exterior Height with A/C	11' 8"	11' 8"	11' 10"	11' 10"	11' 8"	12' 2"	12' 4"	12' 2"	12' 7"
Tire Sizes	225/75R15	225/75R15	225/75R15	225/75R15	225/75R15	225/75R15	225/75R15	225/75R15	225/75R15

TRAVEL TRAILER FLOOR PLANS

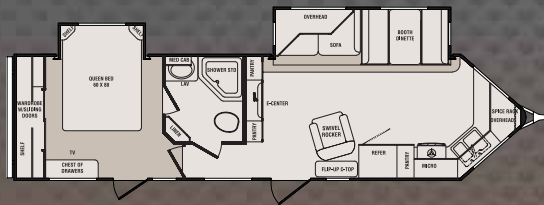
CT32RL



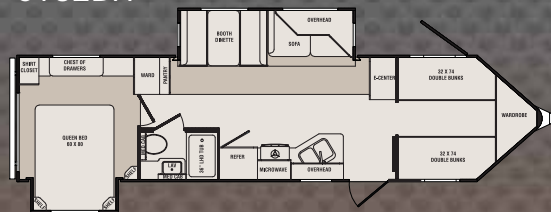
CT32GR



CT32FK

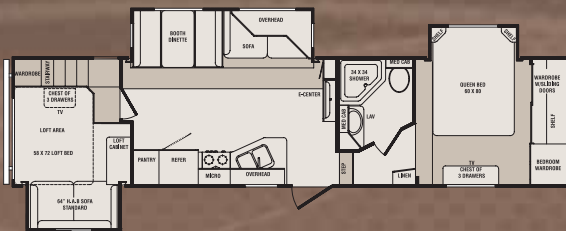


CT32BH



CF33LF

Fifth Wheel Lofted Model



Fifth Wheel Tanks

- Fresh water capacity - 58 gallons
- Black water capacity - 40 gallons
- Grey/galley capacity - 80 gallons

Travel Trailer Tanks

- Fresh water capacity - 58 gallons
- Black water capacity - 40 gallons
- Grey/galley capacity - 80 gallons

DÉCOR CHOICES

Thyme

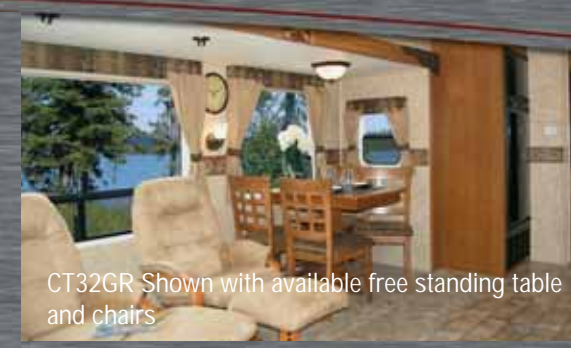
View on Page 2



CF33LF	CT32RL	CT32FK	CT32BH	CT32GR
TBD	7281	7453	7716	7716
TBD	3512	3334	2999	3077
TBD	1126	1120	1048	1126
TBD	6155	6333	6668	6590
TBD	34' 0"	34' 1"	34' 11"	35' 0"
TBD	11' 8"	11' 8"	11' 8"	11' 8"
TBD	225/75R15	225/75R15	225/75R15	225/75R15



CT32FK Front kitchen



CT32GR Shown with available free standing table and chairs



CT32GR Double wardrobe with dressing bench

CRUISER FEATURES



Full extension ball bearing drawer guides



Lighted entry step



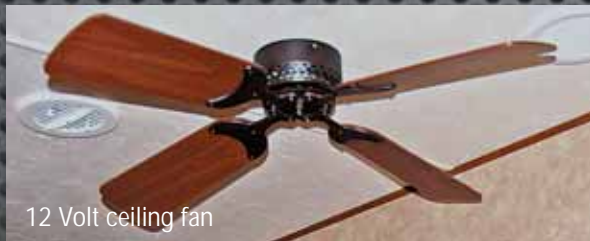
Day/night shades



DVD/CD/MP3 surround



Outlet at awning with switch



12 Volt ceiling fan



Outside speakers



Flip up seat storage



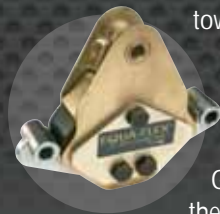
Central control panel

CrossRoads



Dependability that Lasts

What our competitors don't want you to see! Our aluminum frames are bolted not welded. This makes them much stronger and gives them a longer life. Poorly welded frames come apart and are costly to fix.



Trailair's Equi-Flex™ Equalizer suspension ensures a smoother ride, more stable towing and improved coach and vehicle safety.

On broken pavement at 55mph, Equi-Flex™ reduced G-force up to 89% (360Hz)* at the trailer frame. It's the ultimate rough road remover! (Standard)

CONSTRUCTION STANDARDS

1. One-piece, rolled-edge rubber roof with 12 year warranty
2. 3/8" Plywood roof decking
3. 16" OC Aluminum truss roof rafters and tube floor joists
4. R-14 Fiberglass roof and floor insulation
5. Aluminum radius roof transition wrap
6. Full fiberglass front cap
7. 13,500 BTU ducted A/C * • 30,000 BTU floor ducted furnace
8. Aluminum tube 16" OC studs for sidewalls, endwalls and slide rooms
9. Thermo-Foil (PolarTec Upgrade Insulation Package - optional)
10. R-7 Sidewall fiberglass insulation
11. 2 Layers of Luan board - staggered for seamless walls
12. Lamilux fiberglass exterior for easy maintenance
13. 8" Steel I-beam frame (except CT32SB, CT32QB, CF32BL and CT31GR 10" Steel I-beam frame)
14. 5/8" Lightweight tongue and groove plywood floor decking
15. Residential grade carpet with 1/2" foam carpet pad
16. Linoleum bathroom floor
17. Power front jacks (fifth wheel only)
18. Electric slide system(s) with individual room controls
19. 15" Tires with white spoked rims (aluminum option shown)
20. 5,200 lb Axles (fifth wheel and travel trailers)
21. Fully enclosed, insulated underbelly with radiant heat

EXTERIOR STANDARDS

22. Tinted glass windows
 23. Scare light on both sides
 24. Extended pin box (fifth wheel only)
 25. Swing-out entry assist handle *
 26. Roof ladder *
 27. Extra large capacity cargo storage
 28. Sunchaser patio awning *
 29. 30" Radius entry door with screen
 30. Triple entry step
 31. Dual 30 lb LP tanks
 32. Aluminum bumper cover
 33. Back-up mirror
- EZ lube hubs
Black tank flush *
Enclosed gate valves

* Included in Enhancement Package



Living Room Standards

- Booth dinette with drawer storage underneath
- Hide-a-bed sofa with inner spring mattress
- Flush floor slide-out with large dinette window
- Lighted entertainment center
- LCD TV mounting bracket
- Satellite/cable hook-up
- 60 lb ball bearing drawer guides
- 12 volt Dolby digital surround system (MP3/iPod plug in)
- Colored day/night shades
- Lounge chair with foot stool (varies by floor plan)

Kitchen Standards

- 6 cu ft Double door refrigerator
- Self-igniting 22" chef range with 3 burners, cover, hood & microwave
- Formica self-edge countertop
- Solid wood drawer fronts with full extension ball bearing drawer guides
- Wood panel switch key cabinet
- Knife rack

Bedroom Standards

- Deluxe innerspring mattress
- Full 60x80 queen bed
- Lift-up bed with gas struts for extra storage
- 2 Night stands
- Spacious closets
- TV shelf and hook-up
- LCD flip down TV bracket
- Extra tall chest of drawers
- Colored day/night shades

Bathroom Standards

- 40" ABS tub/shower with surround (some models 36")
- Corner shower with glass doors in double and triple slide
- Bathroom storage (varies by model)
- Laundry chute to cargo storage (varies by model)
- Skylight in tub/shower
- Water heater bypass and EZ winterize kit
- 6 Gallon gas/electric water heater with DSI
- Porcelain foot flush toilet

Construction Standards

- One-piece, rolled-edge rubber roof with 12 yr warranty
- 3/8" Plywood roof decking
- 16" OC Aluminum truss roof rafters and tube floor joists
- R-14 Fiberglass roof and floor insulation
- Aluminum radius roof transition wrap
- Full fiberglass front cap
- 30,000 BTU floor ducted furnace
- Aluminum tube 16" OC studs for sidewalls, endwalls and slide rooms

- R-7 Sidewall fiberglass insulation
- 2 Layers of Luan board - staggered for seamless walls
- Lamilux fiberglass exterior for easy maintenance
- 8" Steel I-beam frame (except CF32BL 10" Steel I-beam frame)
- 5/8" Lightweight tongue and groove plywood floor decking
- Residential grade carpet with 1/2" foam carpet pad
- Linoleum bathroom floor
- Power front jacks
- Electric slide system(s) with individual room controls
- 15" Tires with white spoked rims (aluminum option shown)
- 5,200 lb Axles
- Fully enclosed, insulated underbelly with radiant heat

Exterior Standards

- Tinted glass windows
- Scare light on both sides
- Extended pin box
- Extra large capacity cargo storage
- 30" Radius entry door with screen
- Triple entry step
- Dual 30 lb LP tanks
- Aluminum bumper cover
- EZ lube hubs
- Heated enclosed gate valves
- Water management utility compartment
- Gel coat front cap with enhanced turning radius
- Backup mirror on fifth wheels

Enhancement Package Standards

- Ducted 13,500 BTU A/C
- Patio awning
- Tuscan raised panel arch upper and lower cabinet doors
- Roof ladder
- TV antenna
- AM/FM/CD/DVD player/MP3 and iPod plug in
- Dolby digital surround sound
- Black tank flush
- Swing-out entry assist handle
- 65 Amp converter
- Outdoor speakers
- Black formed refrigerator front
- LP quick disconnect
- Equa-Flex



CrossRoads

888-226-7496
www.crossroadsrv.com

Popular Optional Features

- Slide-out awnings
- Rain sensor fans
- Spare tire and carrier
- Chrome center caps
- Rear leveling jacks
- PolarTec upgrade insulation package
- Aluminum rims
- 15,000 BTU A/C
- 10 Gallon gas/electric water heater with DSI
- Outside shower
- LCD TV
- Air mattress hide-a-bed sofa
- Free-standing table and 4 chairs
- Tuscan refrigerator front
- 8 cu ft Double door refrigerator
- Sink covers
- Bi-fold shower door
- 12 volt battery
- Electric awning
- Fireplace with A and B switch
- 30" stabilizer jacks
- Gel glass
- Safety glass
- 16" Tires on aluminum rims (FW only)

Patriot and Provincial Edition Package

(includes Enhancement Package and only available on 30SK, 32BL, 28RL)

- 50Amp service with bedroom A/C prep
- Mobil comfort pillow top mattress
- Roto Flex pin box
- Power leveling jacks - rear
- PolarTec upgrade insulation package
- Additional graphics
- Corian counter tops in kitchen area
- Stainless steel sink
- Sink covers
- 16" Tires on aluminum rims
- Fiberglass Cap
- Freestanding Table and Chairs
- Air Mattress HAB Sofa
- Lounge Chair & Ottoman
- 10 Gallon Water Heater
- 8 Cu. ft. refrigerator IPO 6 cu. ft.
- Electric awning
- Outside shower
- Spare tire and carrier
- 12 Volt ceiling fan
- Gel glass