

Carriage



DOMANI





DF301 DOMANI FIFTH WHEEL IN BROOK CHERRY



Enjoy a luxurious escape without compromising space, style or comfort. Beautiful rich cherry cabinetry permeates the living area with amenities that includes a removable dinette table and a Polk Audio Isonic entertainment system with 32" LCD TV and CD/DVD.

DF310 DOMANI FIFTH WHEEL IN ARLINGTON CHERRY

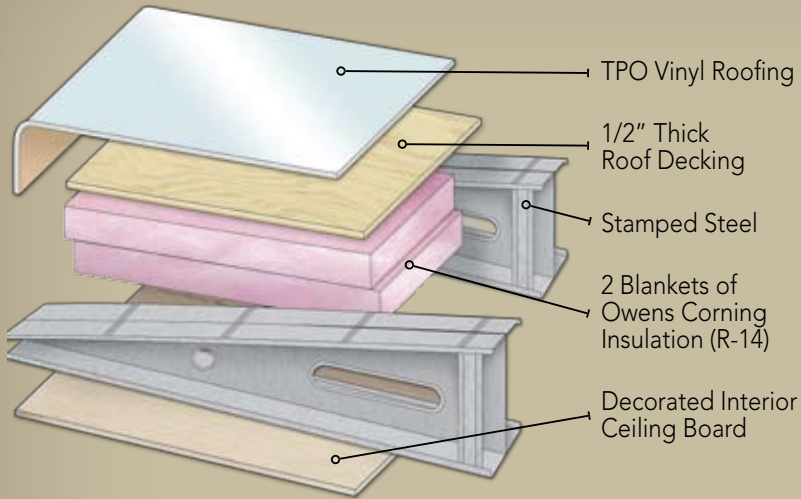




A lavishly appointed galley includes the conveniences of a microwave/convection oven, three-burner stove with cover and the beauty of Corian solid-surface countertops.

DT3000 DOMANI TRAVEL TRAILER IN BROOK CHERRY

ROOF CONSTRUCTION -R16



STEEL ROOF TRUSSES 16" ON CENTER, WITH A 5" CAVITY AND A 3" CROWN

FEATURE: Household construction with household fiberglass insulation.

BENEFIT: 16" centers and 1/2" decking allow for a walkable roof, while the insulation maximizes the AC efficiency.

BENEFIT: Lighter weight than wood trusses with no chance of wood rot. Also has efficient cooling, with no condensation buildup.



CARRIAGE "H-SEAL"

FEATURE: Two seals double the chance at sweeping away moisture and debris while sealing off the elements twice as much as our competitors.

BENEFIT: Two seals are better than one. Our seals are also made of a denser material that will seal tighter than the competition.



NORCO STEEL CHASSIS

FEATURE: Stamped chassis with punched outriggers.

BENEFIT: Using the latest aerospace technology we bring a chassis that is extremely durable yet lightweight. Isn't technology wonderful?



ENCLOSED LP TANKS WITH POWER LIFT

FEATURE: Power tank cover.

BENEFIT: Aerodynamic design for better fuel economy and better LP tank protection.



Domani Fifth Wheel (no paint) and Travel Trailer shown in optional full-body Silverstone paint.



OPTIONAL HIGH PERFORMANCE WHEELS

FEATURE: GOODYEAR FORTERA 285/520 performance tires.

BENEFIT: 50% bigger tires provide better stopping, easier towing and less sway.



TORFLEX RUBBER TORSION SUSPENSION AXLES

FEATURE: The wheel/hub spindle is attached to a lever, called the torsion arm, which is fastened to the rubber encased bar. As load is applied, the bar rotates causing a rolling/compressive resistance in the rubber cords. This action provides the same functions as conventional sprung axles with several operating advantages including independent suspension.



ALUMINUM STUDS WELDED ON 16" CENTERS

FEATURE: We design and build our walls to have a superior strength and durability. Every aluminum stud is welded on 16" centers.

BENEFIT: This construction technique provides improved support for interior overhead cabinets, reduces the damaging flex that may occur in walls built with studs randomly placed and minimizes the possibility of cracks in the sidewall material.

OWENS CORNING FIBERGLASS INSULATION

FEATURE: Spun fiberglass insulation is recognized as the premium insulating material in both the residential and RV industries.

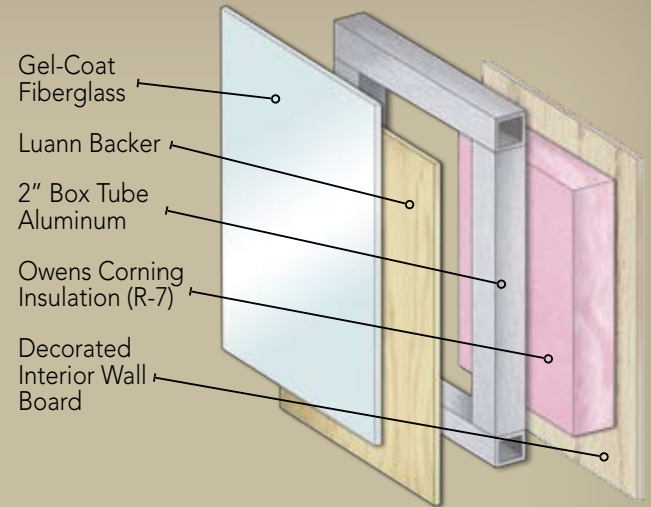
BENEFIT: Fiberglass insulation traps dead air more efficiently than styrofoam insulation and breathes easier than styrofoam, increasing insulation capabilities.

CARRIAGE EXCLUSIVE WARRANTY. THE BEST WARRANTY AVAILABLE PERIOD.

FEATURE: 2yr/5yr Warranty. This is the best warranty in the RV industry.

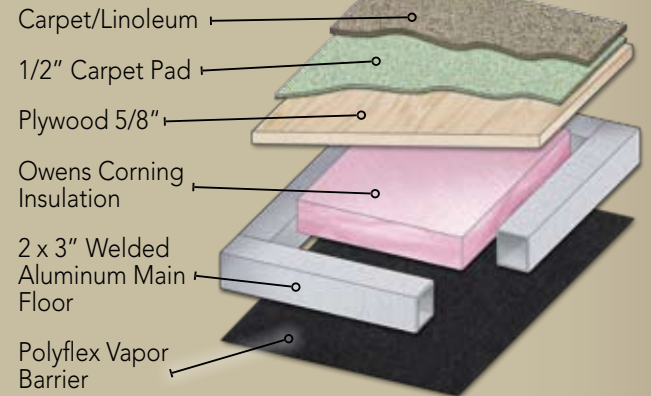
BENEFIT: No exclusions for full timers. Unlike our competition, we want you to enjoy our coaches year-round.

SIDEWALL CONSTRUCTION - R-8



FLOOR CONSTRUCTION -R-16

MAIN FLOOR:



Mor/Ryde PIN BOX

FEATURE: Rubber equalizer built into the king pin.

BENEFIT: Eases the front-to-back chatter and "porpoise" motion typically found pulling a fifth wheel.



ELECTRIC TONGUE JACK (TT ONLY)

FEATURE: Electric tongue jack with level.

BENEFIT: Push button leveling and easy hook-up to your tow vehicle.



WE DIDN'T PATENT IT, WE PIONEERED 40 YEARS OF 80°+ DEGREE TURNING

FEATURE: Domani R-Value in front cap is R-16, unlike the competition we don't reduce the R value.

BENEFIT: Tight turns when necessary but without sacrificing insulation in the R-16 front cap

CARRIAGE DOMANI MAKES RVING EASY



REAR JACKS

FEATURE: Power electric stabilizing jacks optional on 2009 Domani.

BENEFIT: Ease of setup and stabilization at the push of a button.

Also note power electric front jacks with snap pins.



WASTEMASTER SYSTEM

FEATURE: Integrated 25' hose and valve waste disposal system.

BENEFIT: Cleanliness and convenience when dumping tanks. Extremely sanitary and environmentally friendly also.



DOCKING CENTER

FEATURE: All-in-one exterior hookup station, including electric dump valves for holding tanks.

BENEFIT: Makes camp setup easier and hides ugly connections with the under mounted access panel.



COMPLETE ENTERTAINMENT SYSTEM

Includes Samsung LCD TV, Polk Audio Isonic Sound System with CD/DVD and iPod docking station.



FLUSH MOUNTED COOKTOP

FEATURE: 3-burner cooking convenience with a flush mounted cover to provide you with additional countertop space when not in use.

THE INDUSTRY'S ONLY "UNSHOPPABLE" RV

POWER AWNING

FEATURE: Push button power awning

BENEFIT: Easy set up and take down, automatically sheds water



WINDOWS

FEATURE: Frameless windows from HEHR

BENEFIT: No trim rings that can dry-rot, no black streaks and the best look at the campground



ACCESS

FEATURE: A peep-hole at the entrance door

BENEFIT: Improved security and better insulation



BASEMENT STORAGE

FEATURE: Pass through storage with insulated baggage doors

BENEFIT: Enough storage for the weekend or extended stay



EXTERIOR E CENTER WITH LCD TV

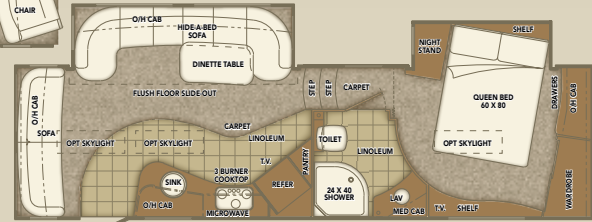
FEATURE: Samsung 19" LCD TV

BENEFIT: Enjoy the outdoors and still have access to your favorite entertainment

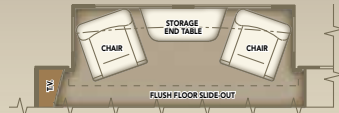


FIFTH WHEELS

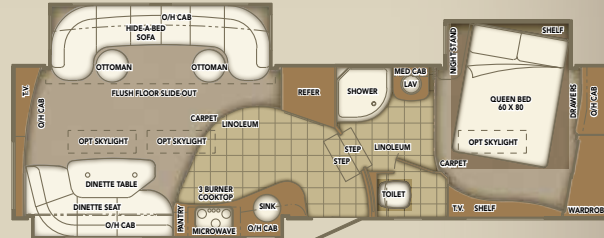
OPTIONAL CHAIRS



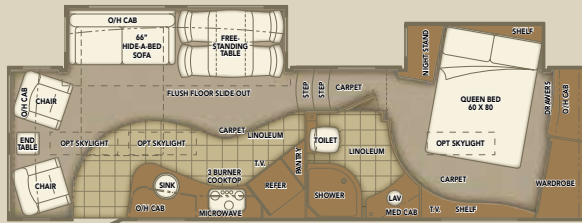
DF300



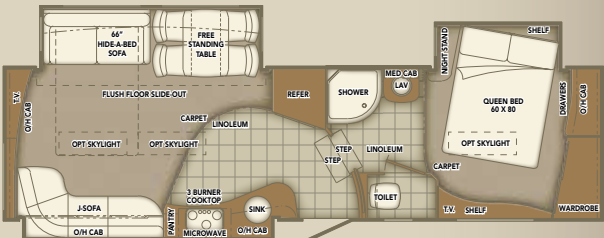
CHAIRS & TABLE I.P.O. SOFA OPTION



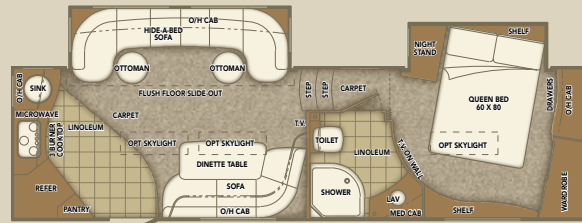
DF310



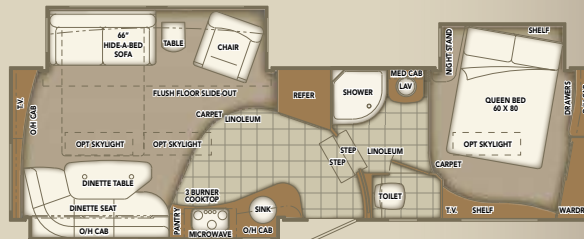
DF301



DF311



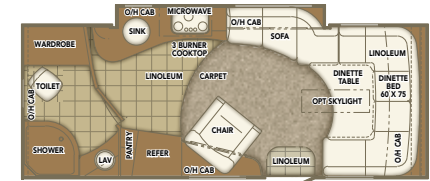
DF302



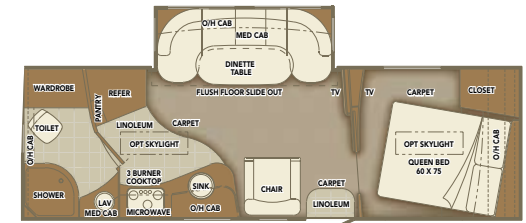
DF312

DOMANI - FIFTH WHEEL	DF300/301	DF302	DF310/311/312
Approx. Exterior length	30' 11"	30' 11"	31' 11"
APPROX. EXTERIOR WIDTH	96"	96"	96"
Approx. Exterior Height w/AC	12' 11"	12' 11"	12' 11"
APPROX. DRY AXLE WEIGHT (LB)*	7,440	7,780	8,275
Approx. Hitch Weight (lb)*	1,800	1,645	1,775
Approx. Total Dry Weight (lb)*	9,240	9,425	10,050
Approx. Average Load Capacity (lb)*	2,260	2,075	1,750
Axles (number of)	2	2	2
Fresh Water Capacity w/ water heater **	72 Gal.	72 Gal.	72 Gal.
Black/Gray Holding Tank Capacity	42/55 Gal.	42/55 Gal.	42/55 Gal.

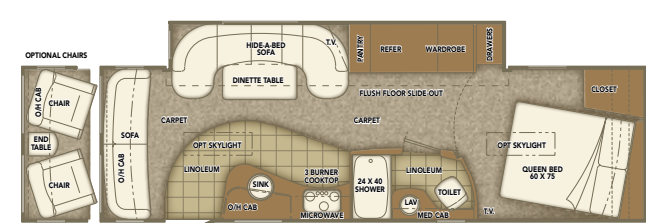
TRAVEL TRAILERS



DT2400



DT2700



DT3000

DOMANI - TRAVEL TRAILER	DT2400	DT2700	DT3000
Approx. Exterior length	24'6"	29'6"	31'6"
Approx. Exterior width	96"	96"	96"
Approx. Exterior Height w/AC	11' 6"	11' 6"	11' 6"
Approx. Dry Axle Weight (lb)*	6,250	7,195	7,615
Approx. Hitch Weight (lb)*	540	690	635
Approx. Total Dry Weight (lb)*	6,790	7,885	8,250
Approx. Average Load Capacity (lb)*	1,010	1,615	1,550
Axles (number of)	2	2	2
Fresh Water Capacity w/ water heater **	65 Gal.	65 Gal.	65 Gal.
Black/Gray Holding Tank Capacity	27/55 Gal.	27/55 Gal.	27/55 Gal.

* Above listed weights are actual units that include all slide out rooms and all popular options ordered on most coaches. These weights are provided as a guideline only. The actual weight of each individual unit (all units are weighed as they come off the production line) is posted inside each vehicle.

** Fresh water capacity includes the combined capacity of the fresh water tanks and the water heater.

"BEST BUILT" PACKAGE

- Nev-R lube axles
- Dexter torflex rubber ride independent suspension
- 30# LP bottles
- Gel coat fiberglass
- Waste master tank drain system

"LUXURY" PACKAGE

- Corian countertops
- 32" Samsung LCD HD TV (26" on travel trailers)
- Polk Audio Isonic sound system
- Pillow top mattress
- Whole House water filter
- Two zone halogen lights with dimmers
- Ultra leather seating
- 15,000 BTU low profile AC (high profile on travel trailers)

"PERFORMANCE" PACKAGE

- Carefree electric awning
- Power gate valves
- 16" aluminum wheels
- Winegard power TV antenna
- Rain sensor fantastic fan in kitchen
- Heated holding tanks with enclosed underbelly

WARRANTY

- Two year hitch to bumper
- 5 year structure, frame and axles

STANDARD FEATURES CHASSIS & RUNNING GEAR

- 12" x 2" drum brakes
- Norco stamped steel chassis
- Enclosed and heated underbelly
- Enclosed and heated holding tanks
- Power front landing gear (FW)
- Snap pins at front jacks (FW)
- Spare tire – crank up
- Electric slide mechanisms with independent switches
- The ultra-dependable Carriage wedge slide room system
- 16" polished aluminum rims with high profile tires

CONSTRUCTION

- 16" on center welded aluminum stud walls and floor
- Stamped steel roof rafters
- 5/8" plywood floor
- 1/2" plywood roof decking
- Gel coat fiberglass sidewalls
- Spun fiberglass insulation (including slide room floors)
- Color matched vinyl roof
- Frameless Hehr windows

MECHANICAL CONVENIENCES

- 8 cu ft (6 cu ft in travel trailers) refrigerator with black stainless doors by Norcold
- 3 burner flush mount cooktop
- 30" Microwave
- Electric Dump Valves
- Travel-R electric awning
- Centralize docking station (with hot and cold outside shower with 19ft. hose, black water flush, city and fresh water fill, satellite and cable TV ready with phone hook-up)
- Powered TV antenna
- 3M whole house water filter
- Fantastic fan with rain sensor in kitchen
- 30 Amp service with 55 Amp converter
- 30,000 BTU furnaces
- 10 gal. Gas and electric DSI water heater

INTERIOR

- Real cherry wood veneer cabinet doors and drawer fronts
- Ball bearing drawer guides
- Brushed nickel-plated drawer and door pulls
- Corian countertops in kitchen and bathroom
- Skylight in shower
- Overhead halogen ceiling lights with dimmers
- Cutting board at the kitchen sink
- Abundant overhead recessed lighting in living and bedroom area and all workstations
- Wood interior window trim
- Leather furniture and window valences

POPULAR OPTIONS

- Light cherry interior
- Dark cherry interior
- Two chairs ILO rear sofa in DF300, DT3000
- Two chairs with storage table ILO full-length sleeper sofa DF310
- Two chairs ILO J-style sofa DF302
- Two sky view windows (one in travel trailers)
- Fantastic fan in bath
- Generator prep (NA on travel trailers)
- 12 V battery
- Battery disconnect
- Sliding cargo tray (NA on travel trailers)
- Low profile ducted AC with heat pump (high profile on travel trailers)
- Low profile 13.5 BTU bedroom AC (NA on travel trailers)
- Prep for second AC in bedroom and 50-amp service (NA on travel trailers)
- Central vacuum system
- MOR/ryde rubber pin box (NA on travel trailers)
- Astro foil insulation
- 20" Goodyear low profile tires with American Racing rims
- Silverstone full body paint
- Sandstone full body paint
- 10' cu ft Norcold refrigerator IPO 8 cu ft (6' cu ft standard on travel trailers, 8 cu ft option)
- 30" convection microwave oven by Sharp
- 19" wall mounted bedroom TV (outside TV bracket fifth wheels only)
- Electric stabilizer jacks (2-FW/4TT)
- Power front tongue jack (TT)
- Ladder (TT)
- Rosso Interior (Red)
- Verde Interior (Green)
- Carbonella Interior (Taupe)



POST OFFICE BOX 246
MILLERSBURG, INDIANA 46543
(574)-642-3622
WWW.CARRIAGEINC.COM

PRODUCT DISCLOSURE AND DISCLAIMER – The product information contained herein is believed to be accurate at the time of posting. However, during the model year, it may be necessary to make revisions. Carriage, Inc., reserves the right, at any time, and without prior notification, to make all such changes, including changes in prices, colors, materials, equipment and specifications, as well as the addition of new features and the discontinuance of existing features. Selected decorator items used in photographs are not part of the product. Therefore, please consult with your Carriage, Inc., dealer to confirm the existence of any materials, design or specifications that are material to your purchase decision. Carriage, Inc., assumes no responsibility for any error in type, print, or reproduction of specifications, designs and specifications of outside suppliers, or colors utilized in printing.

CARRIAGE INC. IS PROUD
TO USE PRODUCTS FROM THESE
MANUFACTURERS



Williamsburg Furniture

YOUR NEAREST CARRIAGE DEALER: