

**PUMA 2009**

Travel Trailers, Fifth Wheels, Park Trailers & Toy Haulers

# 2009 PUMA FAMILY

WELCOMES YOU TO THE GREAT OUTDOORS

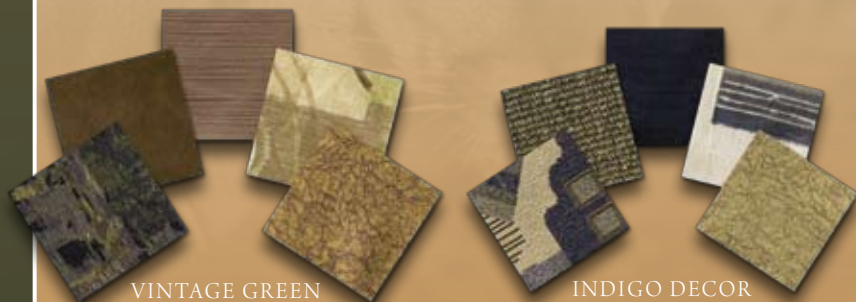
**PUMA**  
by Palomino



TRAVEL TRAILERS, FIFTH WHEELS, PARK TRAILERS & TOY HAULERS

# FUN & CAREFREE

When you're on the prowl for adventure, nothing is better suited than a Puma. These powerfully-built, easily towed travel trailers make the adventure fun and carefree. Puma offers 24 floor plan choices including a variety of kids' bunk room models. Satellite TV hook-up is standard on all models to keep everyone entertained.



VINTAGE GREEN DECOR

INDIGO DECOR



BARK DECOR

RAISIN DECOR



30-DBSS SHOWN IN RAISIN DECOR



31-BHSS SHOWN IN VINTAGE GREEN DECOR ♦





Puma's beautifully designed interiors integrate space, style, and comfort to give you the best of everything – generous living space, convenient features, and lush comforts. An abundance of storage is found throughout enhanced by handsome arch style cabinet doors and solid wood drawers. In the bed and bath area, the residential style shower includes an overhead skylight for natural lighting.

30-DBSS SHOWN IN INDIGO DECOR

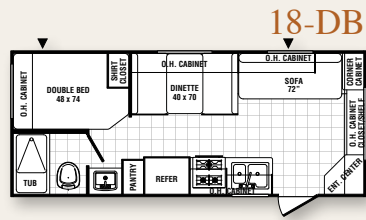


25-RS SHOWN IN BARK DECOR ◆

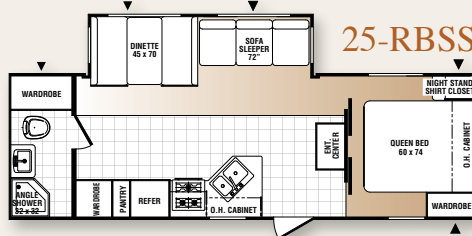




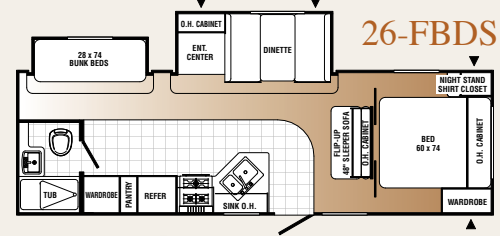
25-RS SHOWN IN BARK DECOR



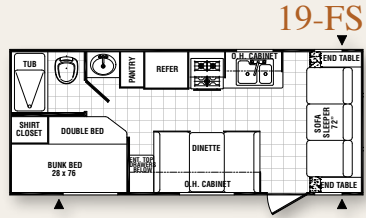
18-DB



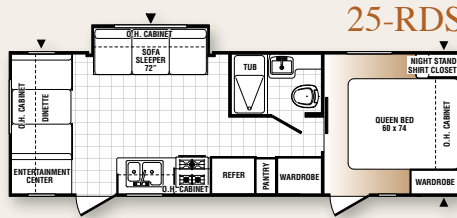
25-RBSS



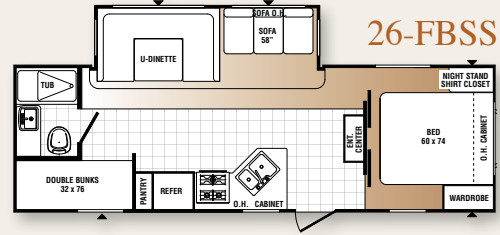
26-FBDS



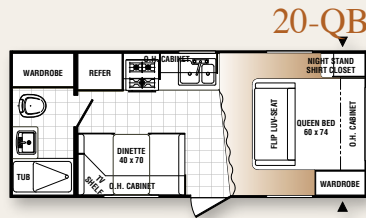
19-FS



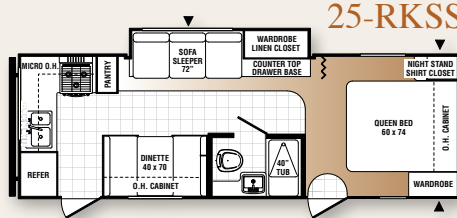
25-RDS



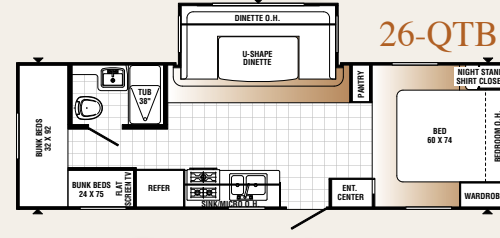
26-FBSS



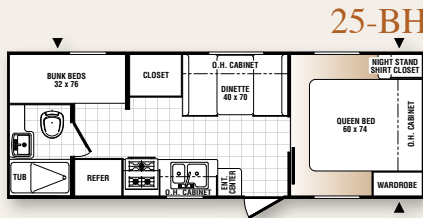
20-QB



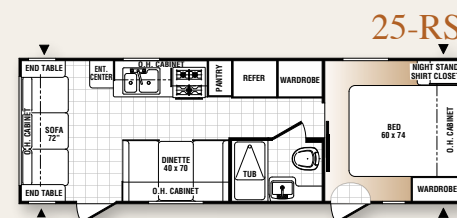
25-RKSS



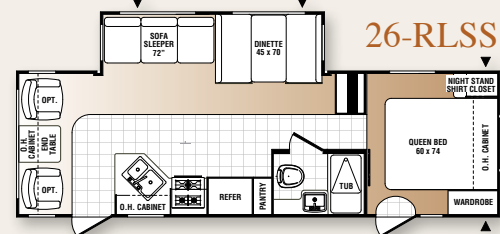
26-QTB



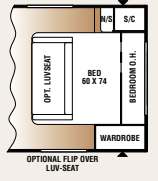
25-BH



25-RS

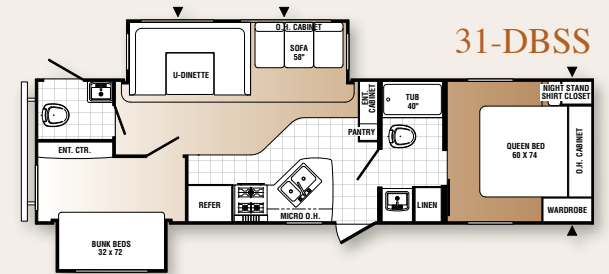
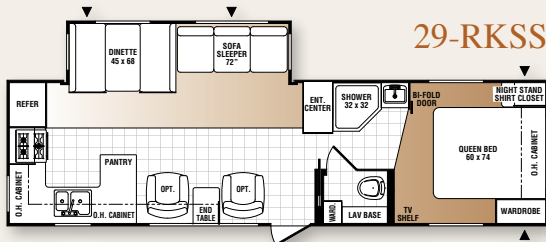
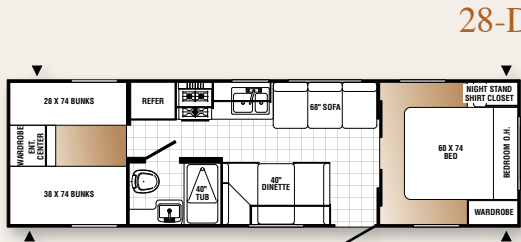
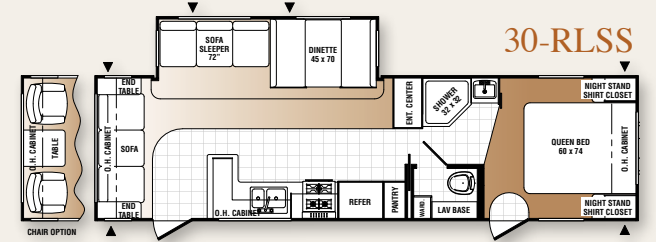
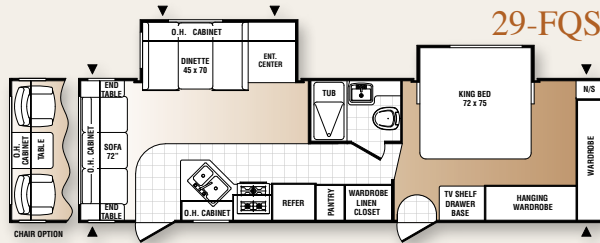
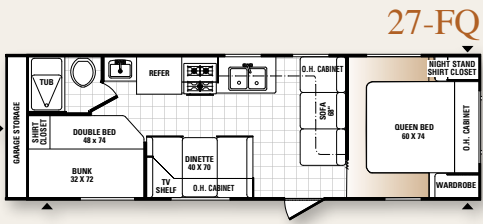
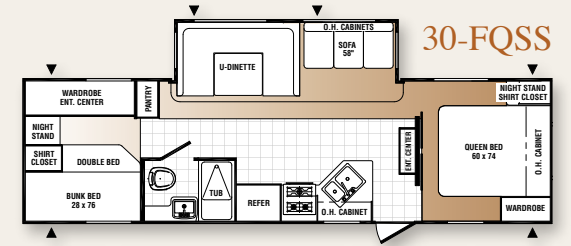
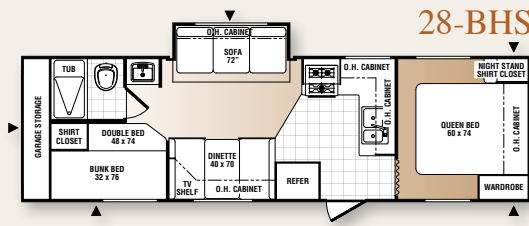
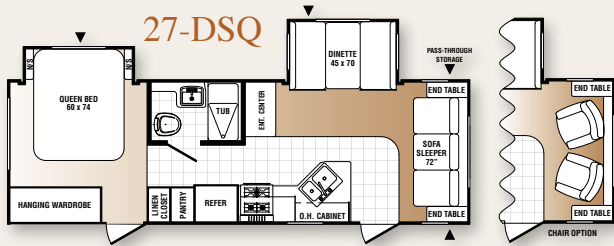


26-RLSS



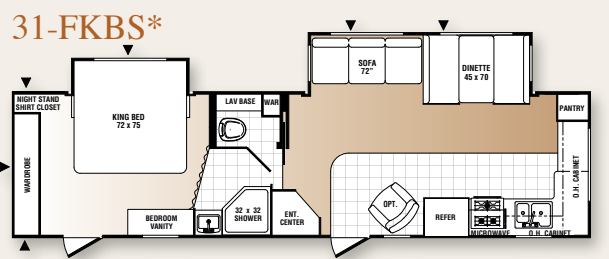
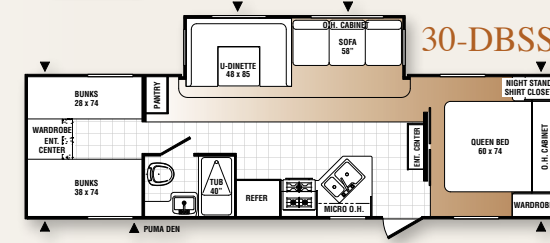
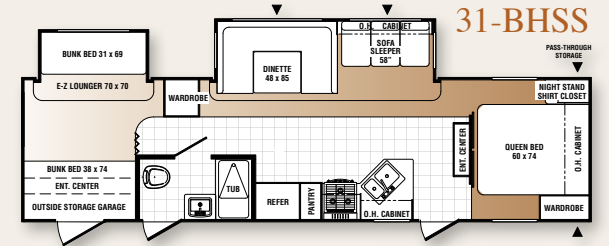
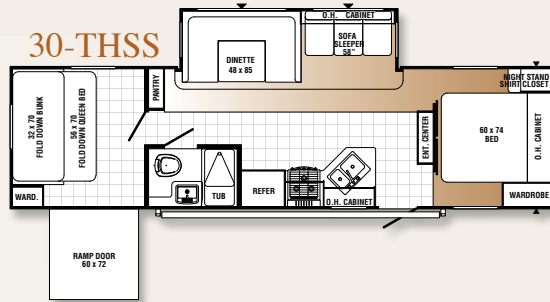
OPTIONAL FLIP OVER LOW SEAT

MODELS	18-DB	19-FS	20-QB	25-BH	25-RBSS	25-RDS	25-RKSS	25-RS	26-FBDS	26-FBSS	26-QTB	26-RLSS	27-DSQ	27-FQ	28-DB	28-BHS	29-FQS
Hitch Dry Weight (lbs.)	527	560	663	660	615	TBD	509	600	720	705	777	700	952	530	TBD	640	720
Dry Axle Weight (lbs.)	3784	3710	3476	4090	5542	TBD	4796	4430	5878	5460	5268	5470	5424	4820	TBD	5260	6260
Total Dry Weight (lbs.)	4311	4270	4239	4750	6157	TBD	5305	5030	6598	6165	6045	6170	6376	5350	TBD	5900	6980
Carrying Capacity (lbs.)	2744	2827	3052	2447	4146	TBD	1732	2107	3808	2877	4420	2867	4504	1717	TBD	1277	2077
GVWR (lbs.)	7527	7560	7663	7660	10775	TBD	7509	7600	10880	9505	10937	9500	11352	7530	TBD	7640	9520
Tire Size	14"	14"	14"	14"	15"	15"	14"	14"	15"	15"	15"	15"	15"	15"	TBD	15"	15"
Interior Height	80"	80"	80"	80"	80"	80"	80"	80"	80"	80"	80"	80"	80"	80"	TBD	80"	80"
Exterior Height w/AC	10'5"	10'5"	10'5"	10'5"	10'5"	10'5"	10'5"	10'5"	10'5"	11'1"	11'1"	11'1"	10'5"	10'5"	TBD	10'5"	11'1"
Exterior Width	96"	96"	96"	96"	96"	96"	96"	96"	96"	96"	96"	96"	96"	96"	96"	96"	96"
Overall Length	23'3"	23'3"	23'3"	27'1"	29'3"	28'0"	28'2"	28'0"	28'0"	29'9"	30'4"	30'2"	29'8"	30'7"	TBD	32'1"	32'8"
Fresh Water Capacity (gal.)	51	51	51	51	51	51	51	51	51	51	51	51	51	51	TBD	51	51
Grey Water Capacity (gal.)	42	42	42	42	42	42	84	42	42	84	42	84	42	42	TBD	42	42
Black Water Capacity (gal.)	42	42	32	32	32	42	32	42	42	32	42	32	42	42	TBD	42	42
Awning Size	14'	14'	14'	16'	21'	20'	18'	20'	20'	16'	16'	21'	16'	21'	TBD	20'	20'



29-RKSS 30-THSS 30-DBSS 30-FQSS 30-RLSS 31-DBSS 31-BHSS 31-FKBS

610	1145	800	800	870	812	890	1020
6320	6200	5870	5870	5948	6900	6812	7064
6930	7345	6670	6670	6818	7712	7702	8084
3390	3098	2467	2467	3740	2788	3116	2624
10770	11305	9600	9600	11030	10972	11290	11180
15"	15"	15"	15"	15"	15"	15"	15"
80"	80"	80"	80"	80"	80"	80"	80"
11'1"	11'1"	11'1"	11'1"	11'1"	11'1"	11'1"	11'1"
96"	96"	96"	96"	96"	96"	96"	96"
33'3"	35'4"	32'8"	32'8"	33'8"	34'10"	35'4"	35'9"
51	100	51	51	51	51	51	51
84	42	42	42	42	72	42	84
32	32	42	42	42	84	32	32
21'	16'	18'	18'	21'	16'	21'	21'



Travel trailer weights include optional 13.5 BTU roof air, double door refer, oven and awning.

\* Available with Residential Options



## ENJOYMENT

Puma offers six fifth wheel floor plans. All models are equipped with a multitude of standard features, plus extra options can be added to tailor your Puma fifth wheel to your needs and lifestyle.

Interiors feature residential style kitchens with designer Armstrong® linoleum flooring and optional home theater surround sound systems for your enjoyment.



VINTAGE GREEN DECOR



SHOWN IN VINTAGE GREEN



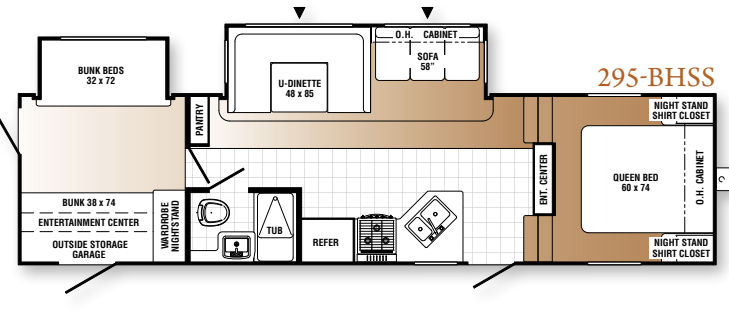
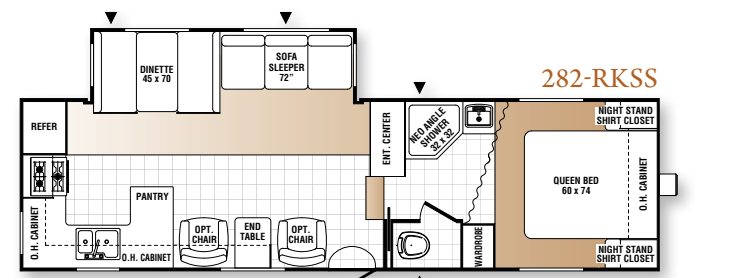
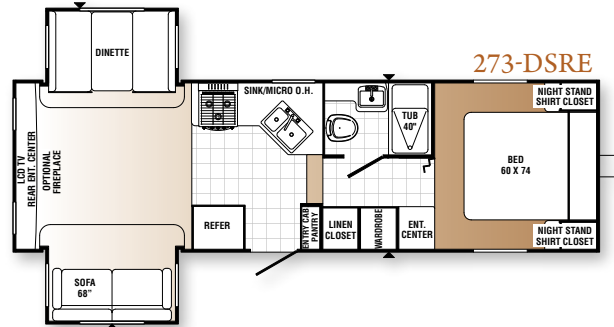
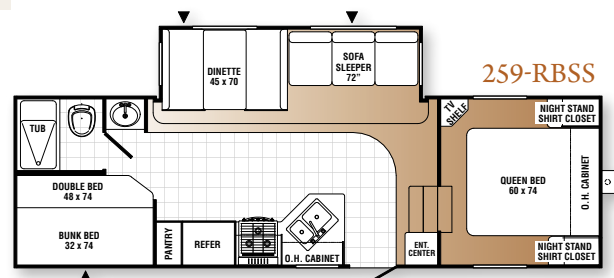
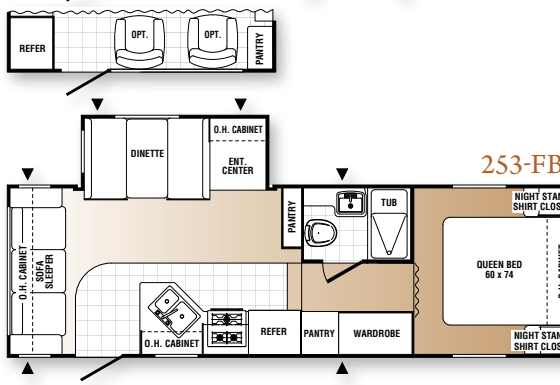
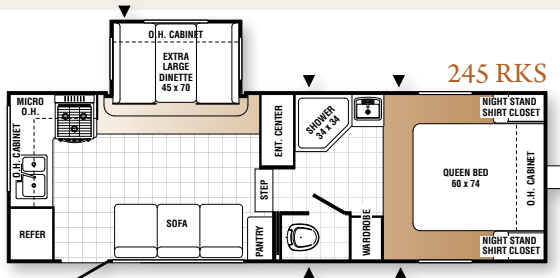


Puma's NEW ComfortAire Hide-A-Bed mattress and under sofa storage drawer are available options in most Fifth Wheels, Travel Trailers and Park Trailers. ◆



MODELS	245-RKS	253-FBS	259-RBSS	273-DSRE	282-RKSS	295-BHSS
Hitch Dry Weight (lbs.)	1080	1200	1391	1622	1270	1073
Dry Axle Weight (lbs.)	4960	5460	5028	5763	5832	6706
Total Dry Weight (lbs.)	6040	6660	6419	7435	7102	7869
Carrying Capacity (lbs.)	1568	2877	4686	3934	3856	2892
GVWR (lbs.)	8080	10000	11551	11782	11430	11233
Tire Size	14"	15"	15"	15"	15"	15"
Interior Height	80"	80"	80"	80"	80"	80"
Exterior Height w/AC	12'4"	12'2"	12'4"	12'4"	12'4"	12'4"
Exterior Width	96"	96"	96"	96"	96"	96"
Overall Length	25'8"	27'0"	28'4"	27'11"	30'1"	33'7"
Fresh Water Capacity (gal.)	51	51	51	51	51	51
Grey Water Capacity (gal.)	84	84	84	32	84	42
Black Water Capacity (gal.)	32	32	32	42	32	32
Awning Size	16'	16'	12'	16'	16'	18'

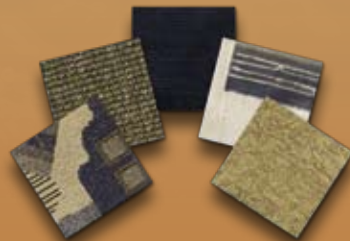
Fifth wheel weights include optional 13.5 BTU roof air, double door refer, oven and awning.





## LEISURE

Enjoy your own vacation home with a Puma Park Trailer. They offer the best in leisure living with four spacious floor plans, two bedroom options, and a den option to accommodate your family's needs. Residential style furnishings and a large master bedroom with king size bed ensure your vacationing comfort.



INDIGO DECOR



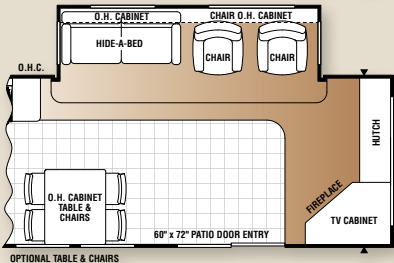
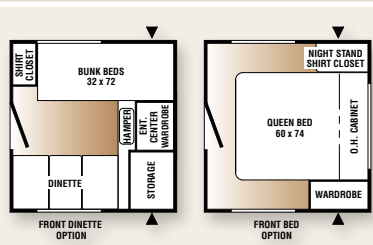
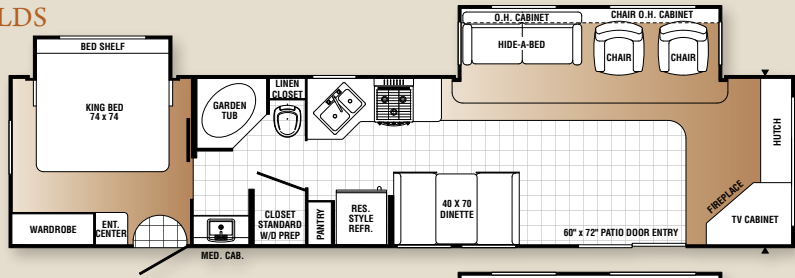
39-PTDBSS SHOWN IN INDIGO DECOR



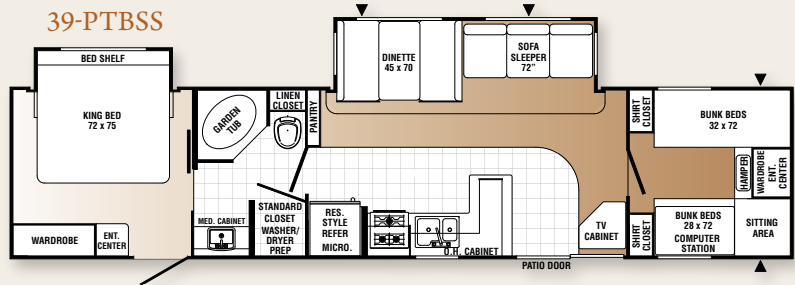
MODELS	38-PFLDS	39-PTBSS	39-PTDBSS	39-PTFKSS
Hitch Dry Weight (lbs.)	TBD	1455	1510	1595
Dry Axle Weight (lbs.)	TBD	6295	8188	7655
Total Dry Weight (lbs.)	TBD	7750	9698	9250
Carrying Capacity (lbs.)	TBD	3765	1872	2405
GVWR (lbs.)	TBD	11615	11670	11755
Tire Size	15"	15"	15"	15"
Interior Height	84"	84"	84"	84"
Exterior Height w/AC	11'9"	11'9"	11'9"	11'9"
Exterior Width	96"	96"	96"	96"
Overall Length	40'2"	40'2"	42'1"	41'10"
Fresh Water Capacity (gal.)	51	51	51	51
Grey Water Capacity (gal.)	84	84	84	84
Black Water Capacity (gal.)	42	42	42	42
Awning Size	21'	21'	21'	21'

Park trailer weights include optional 13.5 BTU roof air, double door refer, oven and awning.

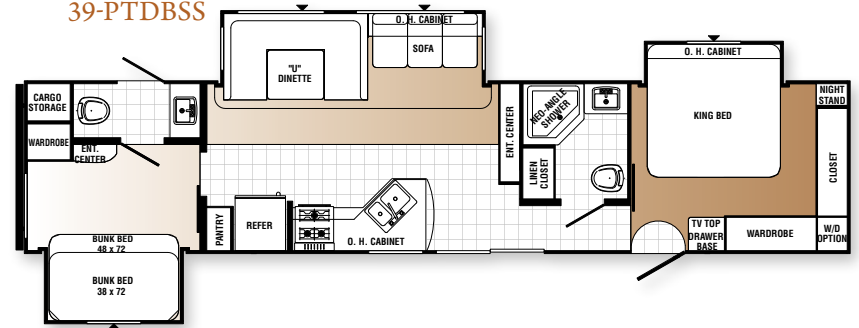
### 38-PFLDS



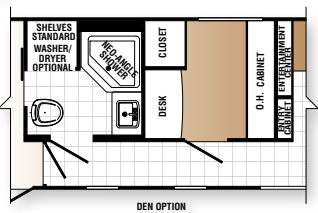
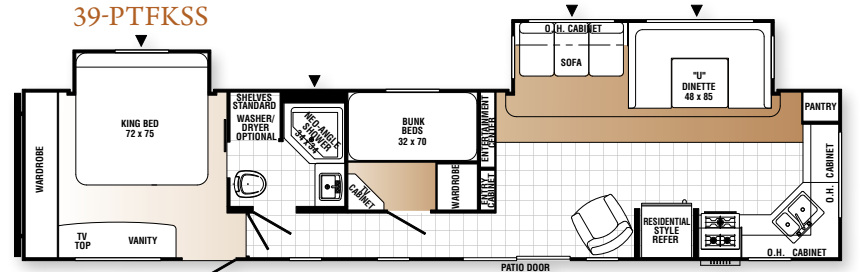
### 39-PTBSS



### 39-PTDBSS



### 39-PTFKSS



## EXTERIOR

- Powder Coated Frames
- EZ Lube Axles
- .024-Gauge Mesa Aluminum Exterior
- Black Window Frames
- Clamp Ring Windows
- Double Entry Doors (where applicable)
- Pass-Thru Storage (where applicable)
- Rubber Roof - 12 Year Manufacturer's Warranty
- 9" Three-Tier Steps
- Rain Gutters
- R7-Fiberglass Insulation (all 6 sides)
- 4-1/2" Crowned Truss Rafters
- Automotive Style Fender Skirts
- Radius Trunk Doors
- Wrapped Darco Underbelly
- One Piece, 24' Sheet, 5/8" Floor Decking (25 Year Manufacturer's Warranty by Affiliated Resources, Inc.)
- 2 x 3 Flush Joists on 12" Centers
- Lighted Pass-Thru Exterior Compartments (where applicable)
- 2-20 lb. Gas Bottles
- 6 Gal. DSI Hot Water Heater
- Rack and Pinion Electric Slide System with Manual Override (standard on all slideout models)
- High End Exterior Graphics
- Extra Color Band Metal on the Bottom Sidewall
- Heavy Duty Storage Door for the Puma Den Option
- Rear Garage Storage Compartment (standard on the 27-FQ and 28-BHS)

## INTERIOR

- Seating Technology Furniture
- 80" Interior Height
- Insulated Duct A/C (all models)
- Floor Ducted Heat
- 30,000 BTU Furnace
- Flush Floor Slide-Outs

- 16" Deep Overhead Cabinets in Super-Slide Models
- Real Wood Drawers
- Plant Built Wood Medicine Cabinet with Mirrored Door
- 60/40 Deep Double Bowl Kitchen Sink
- High Rise Kitchen Faucet
- Arch Top Mortise and Tenon Cabinet Doors
- Suburban 3-Burner, High Output Range
- Knife Rack
- Upgrade Window Treatment
- 55 Amp Converter with Battery Charger
- Flip Down Utensil Tray (kitchen)
- Divided Silverware Drawer (all models)
- Innerspring Mattress
- Bedroom Carpet
- 1 Sink Cover
- Single Door Refer
- Power Vent in Bath
- 12V Shower Light
- 4 Interior Colors
- Coat Hooks in Entry Way
- Bathroom Door Casing
- Quilted Bunk Mats
- Polished Nickel Finish Cabinet Hardware, Light and Bath Fixtures
- Cabinet Doors under Dinette Seats
- Upgraded Wood Facia Slide-Out Framing
- Upgraded Head Boards
- Upgraded Carpet (21 oz.)
- Upgraded Residential Armstrong® Linoleum
- High End Looking Counter Tops
- Color Coordinated Sink
- Full Length Wardrobe and Shirt Closet in Front Bedrooms (Travel Trailer only)
- Surround Sound and 19" LCD TV (Standard in 31-BHSS and 29S-BHSS)

## STD. SAFETY FEATURES

- CO2 Detector
- LP Leak Detector
- Fire Extinguisher
- Smoke Detector

## TRAVEL TRAILER OPTIONS

- Water Purifier
- Sink Cover
- Range Cover
- Galley Extension
- Double Door Refer
- 6 Gal. Gas/Electric DSI Hot Water Heater
- Water Heater By-Pass (forced option)
- 21" Oven
- Microwave
- Create-a-Breeze™ Fan (exchange)
- AM/FM CD Stereo
- TV Antenna with Booster and Cable Hook-Up
- Bedroom TV Hook-Up (NA 19-FS)
- Extra Roof Vent
- 13,500 BTU Ducted A/C
- 15,000 BTU Ducted A/C
- Bedspread
- Outside Grill
- Tub Surround
- Mini Blinds
- Day/Night Shades
- Wall Border
- Front Window with Rockguard
- Awning
- Electric Awning
- 2 Stabilizer Jacks
- 4 Stabilizer Jacks
- Outside Shower
- Tinted Safety Glass
- Diamond Plate
- 30 lb. Gas Bottles and Cover
- Radial Tires
- Spare Tire and Carrier
- AM/FM CD DVD Home Theater Surround Sound System
- Double Bed Spread
- PUMA Den\*

- Swivel Rocker\*
- Bath Skylights
- Free Standing Dinettes\*
- Overhead Cabinets in Slide Room\*
- Hide-A-Bed Sofa\*
- Glass Shower Door\*
- Roof Ladder
- Heated Tanks
- J-Lounge Sofa (29-RKSS only)
- Stacked Bunk Option (19-FS and 27-FQ only)
- Interior Decors: Bark, Indigo, Vintage Green and Raisin

## PUMA PREMIER PACKAGE

\*Available on Select Models

## PARK TRAILER STANDARDS

- 6 Gal. Gas/Electric DSI Hot Water Heater
- Upgrade Mattress
- Home Theater DVD Surround Sound AM/FM/CD Player
- FS Range
- Phone Jacks
- Patio Door
- Residential Refer
- Solid Oak Raised Panel Cabinet Doors (throughout)
- Lambrequin Window Treatments
- 6 Panel Interior Passage Doors
- Bedroom Roof Vent
- 35,000 BTU Furnace

## PARK TRAILER OPTIONS

(See your dealer for details)

## FIFTH WHEEL OPT.

- Water Purifier
- Sink Cover
- Range Cover
- Galley Extension
- Double Door Refer
- 6 Gal. Gas/Electric DSI Hot Water Heater

- Water Heater By-Pass (forced option)
- Oven
- Microwave
- Create-a-Breeze™ Fan (exchange)
- AM/FM CD Stereo
- TV Antenna with Booster and Cable Hook-Up
- Bedroom TV Hook-Up
- Extra Roof Vent
- 13,500 BTU Ducted A/C
- 15,000 BTU Ducted A/C
- Bedspread
- Tub Surround
- Mini Blinds
- Day/Night Shades
- Wall Border
- Swivel Rockers\*
- Outside Grill
- Awning
- Electric Awning
- 2 Stabilizer Jacks
- Outside Shower
- Diamond Plate
- ABS Front Cap with Diamond Plate
- Tinted Safety Glass
- Power Front Jacks
- 30 lb. Gas Bottles
- Radial Tires
- Spare Tire and Carrier
- AM/FM CD DVD Home Theater Surround Sound System
- PUMA Den\*
- Bath Skylights
- Free Standing Dinettes\*
- Overhead Cabinets in Slide Room\*
- Hide-A-Bed Sofa\*
- Glass Shower Door\*
- Roof Ladder
- Heated Tanks
- Interior Decors: Bark, Indigo, Vintage Green and Raisin

## PUMA PREMIER PACKAGE

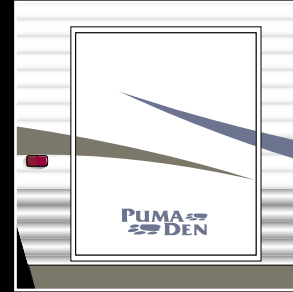
\*Available on Select Models



**EXTRA WIDE STORAGE**



**REAR STORAGE**  
(Standard on 27-FQ, and 28-BHS)



**PUMA DEN DOOR**  
(Optional)



**DINETTE UNDER SEAT STORAGE ACCESS**



## CONSTRUCTION & FEATURES

- A. Rubber Roof (12 year warranty)
- B. Rugged, Powder Coated Steel I-Beam Frame
- C. Sturdy .024 Gauge Aluminum Skin
- D. Exterior Amber Lens Patio Light
- E. Exterior Hitch Light for Night-Time Hook Up
- F. 51 Gallon Fresh Water Tank
- G. Bold Exterior Graphics
- H. Residential Grade Carpet-21 oz. with Pad
- I. Color Band Metal Enhances Exterior Looks
- J. Sidewall Studding Spaced 16" Apart
- K. Longitudinal Floor Studding Spaced 12" Apart
- L. 5/8" One Piece Floor Decking
- M. New Armstrong® Linoleum Flooring Throughout
- N. R7 Fiberglass Insulation Cut and Glued Between Sidewall Studs
- O. 4-1/2" Crowned Truss Roof Rafters
- P. Steel Crossmembers for Added Support
- Q. Floor Ducted Heat
- R. Insulated Wrapped Ducted Air Conditioning Runs
- S. 3/8" Roof Decking
- T. Puma "Next Generation" Enclosed and Heated Water Tank

### PUMA PREMIER PACKAGE

- Radius Entry Door
- Folding Grab Handle
- Raised Panel Cabinet Doors (Eye Level Living Room and Kitchen)
- Overhead Cabinets in Super Slide Models
- Bi-Fold Doors In Place of Curtains (Where Applicable)
- Day/Night Window Shades
- Dark Tinted Safety Glass
- Upgraded Front Cap (Fifth Wheels)
- AM/FM CD DVD Home Theater Surround Sound System
- 6 Panel Interior Passage Doors
- Color Band Metal at the Top of the Coach
- Diamond Plate Standard
- High End Metal Rear Bumper Cover
- Chrome Trim Rings and Hubs on the Wheels
- Frosted Light Above Sofa in Super Slides
- Throw Pillows for the Sofa
- Roof Ladder
- Special Puma Premier Package Decal
- Upgraded Mattress
- Outside Shower

- Radial Tires
- 2-Exterior Speakers
- 30 lb. LP Gas Bottles
- 20" LCD TV

**AVAILABLE IN ALL MODELS!!**

### PARK TRAILER RESIDENTIAL PKG.

- Residential Style 18 Cu. Ft. Refer
- Patio Door
- Free-Standing Range

## PUMA UNLEASHED

The Puma Unleashed offers the ultimate in versatility. It comes in eight innovative floor plan designs including two all new fifth wheel models. Whether you crave the action of four-wheelers and dirt bikes or enjoy motorcycle cruising, the Unleashed's huge cargo area can haul it all. There's even a re-fueling port that keeps the fun going. Best of all, the living quarters offer the best in comfort, convenience, and flexibility.



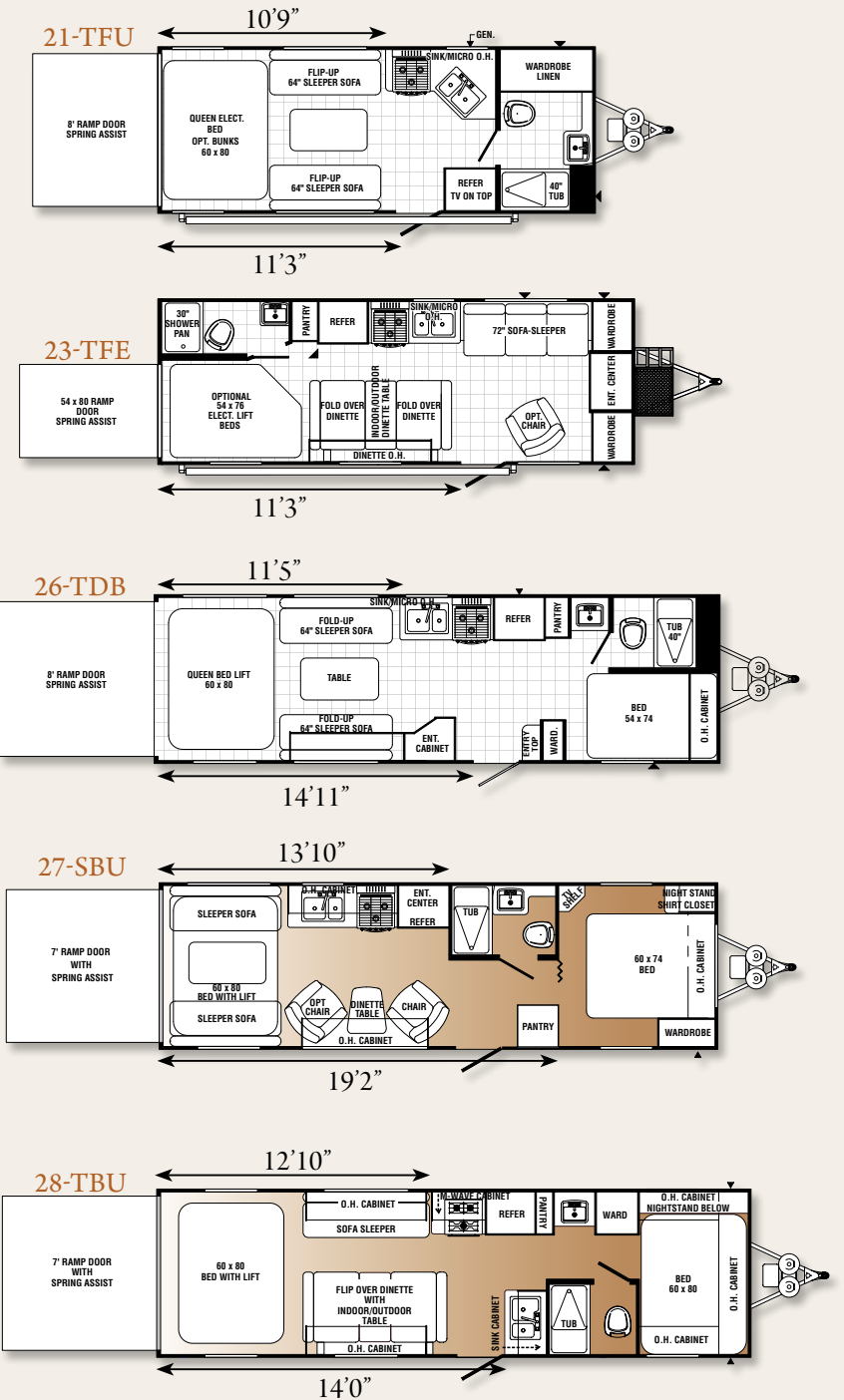
GARNET DECOR



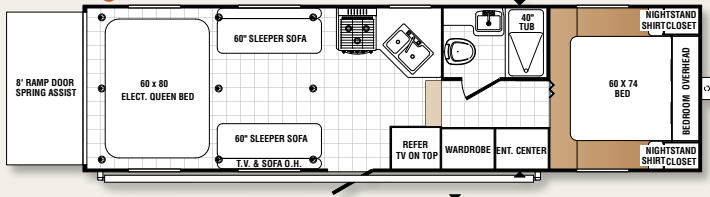
CINNAMON DECOR



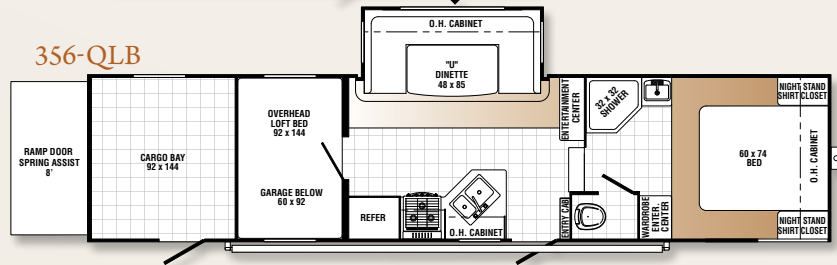
## TRAVEL TRAILERS



## 298-FQU



## 356-QLB



# FIFTH WHEELS

## STANDARDS

- Heavy Duty I-Beam Frames with EZ Lube Axles
- 1/4" x 8" Tie Down Reinforcement Plates for Secure Cargo Tie Downs
- Beaver Tail Rear Floor for Easy Loading
- .024 Aluminum Siding for Rigid Affordability and Ease of Maintenance
- 2" x 2" Wood Framed Sidewalls on 16" Centers
- 2" x 3" Floor Joist on 10" Centers
- R-7 Insulation Floor, Walls, and Ceiling for Comfort
- One Piece 5/8" DynaSpan™ Floor Decking with a Limited Lifetime Warranty
- One Piece Comfort Back Vinyl Flooring with a 10-Year Wear Guarantee
- 3/8" Walkable Roof Decking Over 4-1/2" Crowned Roof Rafters
- One Piece Rubber Roof with 12 Year Warranty
- Insulated Duct For Air Conditioning in Ceiling
- Floor Ducted Heat
- Durable Easy-to-Clean Puma Silver Interior Wall Vinyl
- 55 Amp Converter Standard
- 7' Rear Ramp Door Height, 8' on 356-QLB
- 5.1 Dolby Surround Sound System with Sub-Woofer, AM/FM/DVD Player, Weather Band, XM Radio, and Plug-In for iPod (N/A 21-TFU & 356-QLB)
- 20" LCD Flat Screen TV with Movable Bracket for Easy Mounting Inside or Outside (N/A 21-TFU & 356-QLB)
- 26" LCD TV in 356 QLB
- Front Baggage Compartment with Sliding Tray (27-SBU, 28-TBU & 23-TFE)
- Front Exterior Baggage Compartment
- Sofas Fold-Down into Queen Bed



BAGGAGE COMPARTMENT WITH SLIDING TRAY



FUEL STATION



BAGGAGE COMPARTMENTS

## SPECIFICATIONS

MODELS	21-TFU	23-TFE	26-TDB	27-SBU	28-TBU	298-FQU	356-QLB
Hitch Dry Weight (lbs.)	896	TBD	TBD	902	1206	TBD	2557
Dry Axle Weight (lbs.)	4638	TBD	TBD	6028	6069	TBD	6651
Total Dry Weight (lbs.)	5534	TBD	TBD	6930	7275	TBD	9208
Carrying Capacity (lbs.)	5052	TBD	TBD	3220	3125	TBD	4432
GVWR (lbs.)	11056	TBD	TBD	11062	10400	TBD	14557
Tire Size	205/75D/15	205/75D/15	225/75D/15	225/75D/15	225/75D/15	225/75D/15	235/80D/16
Interior Height	84"-96"	84"-96"	84"-96"	84"-96"	84"-96"	8'0"	8'6"
Exterior Height w/AC	12'	12'	12'	12'	12'	12'	13'2"
Exterior Width	96"	96"	96"	96"	96"	96"	96"
Overall Length	24'7"	26'7"	30'5"	30'5"	31'2"	30'0"	35'9"
Fresh Water Capacity (gal.)	51	51	100	100	100	51	100
Grey Water Capacity (gal.)	32	74	42	42	42	32	42
Black Water Capacity (gal.)	32	42	42	32	32	42	32
Awning Size	14'	TBD	TBD	16'	16'	TBD	21'

## OPTIONS

- 30 Gallon Fuel Station with Timer (N/A 21-TFU)
  - Manual Queen Bed (Available all Models)
  - Electric Single or Double Queen Bed(s) (Available all Models)
  - Standard Puma Interiors (Available all Models)
  - 4.0 Onan® Generator Gas or 3.6 Onan® Generator LP (27-SBU & 28-TBU)
- \*Additional Options Available

## ELECTRIC AWNING

Easy-to-operate electric awnings are available on all Puma models for your outdoor comfort and convenience. High end graphics, diamond plate stone guard, champagne metal trim, and automotive style fender skirts create a sleek, contemporary exterior that turns heads.



### PUMA DIVISION

Forest River, Inc.  
31450 M-86 West  
Colon, MI 49040  
Phone: (269) 432-3271  
[www.palominoRV.com](http://www.palominoRV.com)

All illustrations and specifications contained in this literature are based on the latest product information at time of publication. Forest River, Inc. reserves the right to make changes in prices, colors, materials, equipment and specifications at anytime without notice and assumes no responsibility for any error in this literature. All weights shown are approximate. All units are shipped FOB. point of manufacture.

CONSULT YOUR LOCAL DEALER FOR WARRANTY INFORMATION.

## PALOMINO RV ENCOURAGES YOU TO BUY LOCALLY

Palomino RV strongly encourages our retail customers to purchase from their local dealership whenever possible due to the following factors:

- Our Dealers are, as a rule, independently owned and operated businesses. Outside of those customers they personally sold products to, they are not contractually obligated to perform warranty service on Palomino products that were purchased elsewhere. There **may** be an occasion that you would be required to return to the point of purchase to satisfy warranty requirements.
- Although many dealerships will eventually service products not purchased at their place of business, they will usually take care of their customers and other Palomino customers who are traveling away from their local dealer as they would their own.
- Local purchases allow a customer to establish a relationship with a dealer close to home. This relationship provides the customer with a convenient location for service and support from a "home town" professional.
- The opportunity for a thorough PDI (Pre-Delivery Inspection) and product orientation is an additional benefit of buying from your local dealer, further providing the opportunity for refresher courses or the ability to get questions answered much more conveniently.
- For our Canadian customers, there are also requirements which must be met to bring an RV purchased out of the country to their home. Although not insurmountable, these requirements may involve such things as additional inspections and certifications, taxes and fees. Your local Canadian Dealer is a professional at meeting these requirements.

Palomino RV's goal is for all RV Owners to fully enjoy their RV experience. In light of this goal, and considering the advantages of buying local, we encourage you to be thorough when determining what product to purchase and which dealer to purchase it from as both are key to your ultimate satisfaction and the realization of your dreams.

## YOUR DEALER