



# Cedar Creek COTTAGE

Wide Body

The Smart Choice for the Experienced RV'er









Enjoy the comfort of your very own Cottage at your favorite vacation spot. The Cedar Creek Cottage offers the convenience of a park trailer with the amenities of a fine vacation home. Its **wide body design** and **eight feet of interior height** provide roomy comfort for family and guests. Whether at the lake, in the mountains, or your favorite campground, your Cottage welcomes you with upscale features created to pamper and appease.





A



B



C



**D**



**E**

- A** The residential kitchen is outfitted with a full size range and oven and an abundance of cabinet storage.
- B** Model 40CFL features a convenient lunch bar for casual dining and serving.
- C** The large home-style 18 Cu. Ft. refrigerator with ice maker is standard in all models.
- D** The built-in desk complements the entertainment center complete with 32" flat screen HD TV and fireplace.
- E** The dining chairs offer extra storage space underneath the seat.





A



Serta



B



C

- A The Cottage Bed and Bath Package is comprised of many upscale luxuries including a Forest River Exclusive Serta® Sleeper Mattress.
- B The large dresser, with deep drawers and cabinet, adds storage capacity to the bedroom.
- C The radius-style, residential one-piece fiberglass shower is a space-saving feature of this roomy bathroom.

## Decor Options



Wheat Tapestry



Desert Diamonds

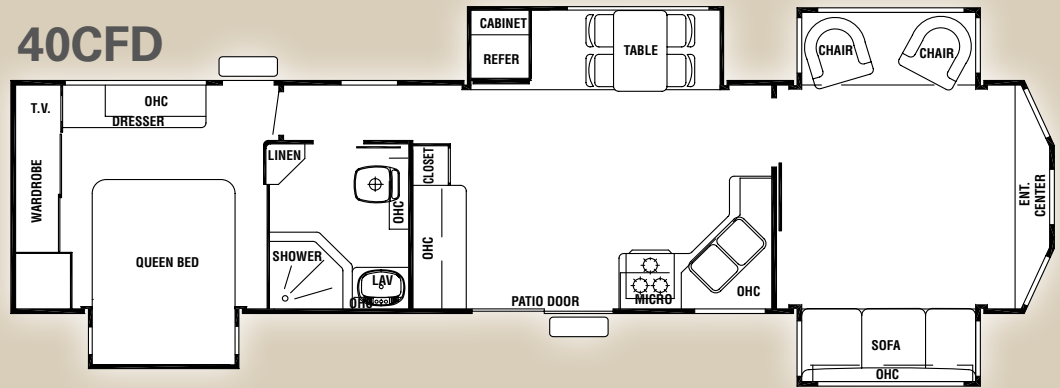


Oak Leaf Beige

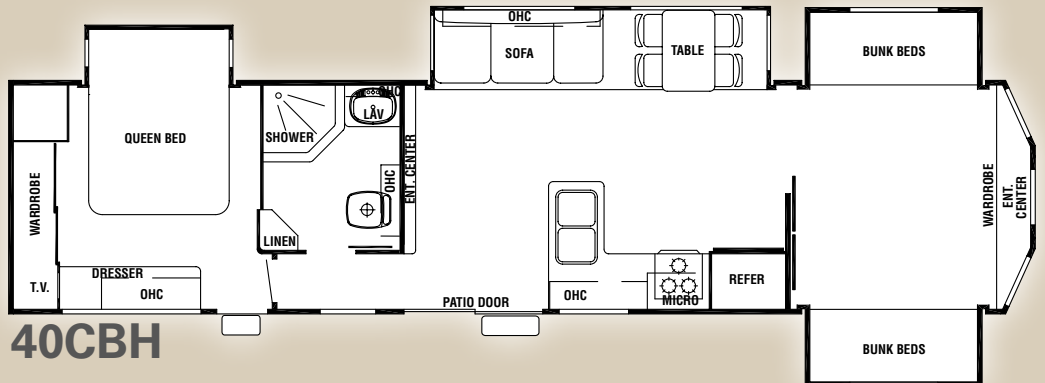
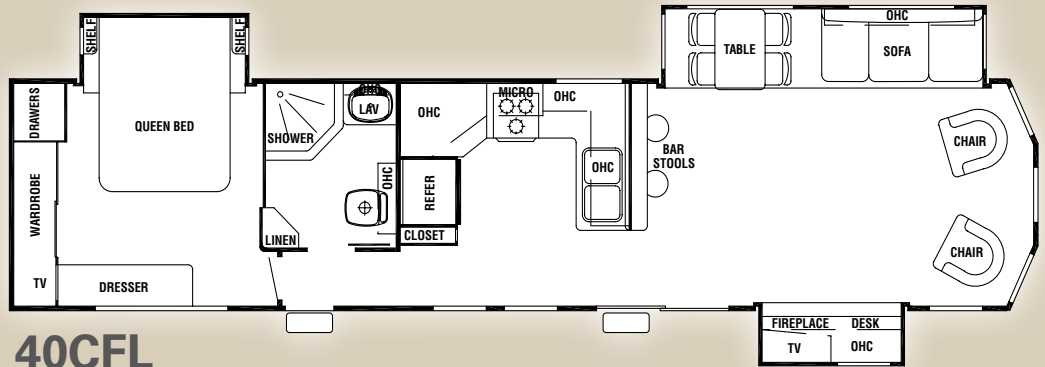


Santa Rosa Harvest

### 40CFD



### 40CFL



Model	40CFD	40CFL	40CBH
Exterior Length	41'9"	39'6"	39'6"
Exterior Height w/Air Conditioner	12'10"	12'10"	12'10"
Exterior Width	102"	102"	102"
Bedroom Interior Height	8'	8'	8'
Hitch Weight	2042	1371	1456
Axle Dry Weight	9030	8620	8852
Unloaded Vehicle Weight	11072	9991	10308
GVWR	14042	13371	13456
Gross Cargo Capacity	2970	3380	3148
Dual Axles (2)	6000# Straight	6000# Straight	6000# Straight
Wheel Size	16 x 6	16 x 6	16 x 6
Tire Size	LT235/85R/16E	LT235/85R/16E	LT235/85R/16E
Awning Size	18'	18'	18'
Furnace Size	42 BTU	42 BTU	42 BTU
Water Heater Size	20	20	20
Demand Fresh Water Capacity	76	76	76
Black and Grey Water Capacity	40 / 40 / 40	40 / 40 / 40	40 / 40 / 40
Sleeping Capacity	6	6	8

All Weights listed above are base weights. Weight capacities +/- 5%. NOTE: Model number of any particular unit does not necessarily reflect the overall length of the unit itself.

Emergency  
Roadside  
Assistance  
Service  
Administered  
by Coach-  
Net®. Ask your  
dealer for more  
information.



## Exterior Features

- Cedar Creek's Famous All Aluminum Super Structure on 16" Centers or Less
- "Soft Top" Vinyl Storm Doors
- #30 Gas Bottles w/Bottle Cover & Automatic Change Over
- 102" Wide Body
- 12 Volt Battery Disconnect
- 16" Tires
- 30" Radius Front Door Entry w/Deadbolt Lock & Drip Cap w/"Soft Top" Entry Storm Doors that allow Full View to the Outdoors
- 55 AMP Power Converter
- 7' (84") Tall Slide-Outs
- 8' (96") Interior Height
- A Combination of Artwork Graphics & Automotive Paint for a Residential Exterior Look
- All Exterior Compartment Doors, Exterior Lights & Corners are Sealed w/Butyl Rubber & Silicone - Proven to be the Best Sealant in the Industry - No Putty or Foam Tape
- Black Tank Flush
- Break Away Switch
- Cambered 10" I-Beam
- Convenient Single Access Phone Jack & Cable TV Connections
- Decorative Front Cap w/Molded Picket Fence
- Detachable 50 AMP Power Cord
- Detachable Hitch
- Enclosed & Double Layer Insulated Underbelly (R14 + 5)
- Hitch Light
- Large Surface 12 Volt Heating Pads on All Holding & Fresh Water Tanks w/Thermostat
- Large White Framed Dark Tinted Jalousie Clamp Ring Windows w/Butyl Rubber Seals
- Lighted Entry Step
- Porch Light
- Quick & Easy Ultra Lube Axles, Adjustable Hanger Plates & Four Wheel Electric Brakes
- Radius Wrapped Bottom Metal Skirt
- Silver Metallic Clear Coat Wheels (No Rusting White Rims)
- Single Access Fresh Water Fill & City Water Hook-Up w/Lock
- Smooth, Easy Operating, Easy Grip, Entry Steps - Extra Wide for Confident Footing
- Superior UV & Weather Protection
- Tinted Safety Glass
- True Gelcoat Lockable Clamp Ring Exterior Baggage Doors w/Thumb Grip & Door Catch
- UV Automotive Clearcoat Paint Coating is Placed on Refrigerator Vents to Prevent Premature Color Changes & Provides Superior UV & Weather Protection

## Bedroom

- 8" Deep, Drawers in Main Bedroom Area
- Bedroom Roof Vent
- Bedroom Slide - 80" Queen Bed 2 x 2 Finished Bed Base
- Braced & Wired for 2nd Air Conditioner
- Ceiling Mounted, Individually Switched, Overhead Reading Lights
- Central Television Cabinet Location
- Large Capacity Storage Area under the Bed
- Luxurious Bedspread which Includes Elastic Mattress Grips, Pillows & Shams
- Soft Bronze Mirrored Closet Doors
- Solid Wood Dresser Top

- Solid Wood Shelves
- Swivel Mount TV Antenna w/Power Booster
- Upgraded Pillow Top Residential Mattress w/Gas Lifts, Side Ventilation Windows, Designer Residential Style Headboard & Pillows

## Kitchen

- 18 Cu. Ft. Refrigerator w/Ice Maker
- Congoleum® Diamondflor® Armorguard® Vinyl Floor Covering
- Crown Molding Complementing All Overhead Cabinets in Kitchen Area
- Digital Thermostat for Heat & Air Conditioner
- Durable, Residential Stainless Steel Sink w/ Full Twin Deep Wells
- Entire Water Filtration System which Includes Tank & City Water - Even Your Shower Water is Filtered
- Freestanding Table w/4 Chairs
- Halogen Flat Ceiling Lights
- High Rise Swivel Spout & Vegetable Sprayer & (1) Sink Cover
- Hoosier Cabinet - (40CFL Only)
- Laminate Countertop w/2" Solid Oak Edge
- Larger 74 Gallon Demand Water System
- Lazy Susan (W/A)
- Pantry (W/A)
- Residential Style Roller Drawer Guides w/ Travel Locks - No Binding
- Silverware Drawer
- Solid Ash Drawer Fronts w/Baltic Birch Sides & Ends Convenient 5" & 8" Sizes
- Thermo-Pane Patio Door (PKG)
- Toe Kicks at the Base of the Kitchen Cabinet

## Misc. Appliances

- 15,000 BTU Air Conditioner (PKG)
- 18 Cu. Ft. Residential Refrigerator w/Ice Maker
- 20 Gallon Water Heater (PKG)
- 30" Over the Range Microwave (PKG)
- 50 AMP Detachable Power Cord
- Carbon Monoxide Detector
- Fireplace (W/A)
- LP Gas Detector
- Single Digital Residential Style Thermostat for Heating & Cooling
- Smoke Detector
- Solid State 55 AMP Power Converter
- Suburban 30,000 (Minimum) BTU Furnace
- Wall Mount Monitor Panel
- Water Heater By-Pass System for Winterization

## Living Room

- Carbon Monoxide Detector
- Ceiling Fan w/Light
- Create-A-Breeze Fantastic Fan w/Thermostat & Rain Sensor in the Kitchen
- Fluted Hardwood Main Slide Fascia Supported by Oak Columns & Post Pad at Carpet
- LP Detector
- Main Slide-Room Height is 7'
- Pre-Drilled & Counter Sunk Fastened Cabinetry w/Lumber-Core Cabinet Stiles
- Queen Ann Style End Table (W/A)
- Residential Wood Mini-Blinds
- Smoke Detector

- Solid Ash, Cathedral Style, Cabinet Doors w/ Heavy Duty Hinges, w/Residential Handles & Knobs for a Beautiful Crisp Clean Look
- Trackless Plush Pile Carpeting in All Living Room & Bedroom Areas
- TV Cable, Satellite, & Phone / Data Port Jack in Living Area
- Upgraded Lighting at Sofa & Decorative Overhead Dinette Light
- Valances
- Wall Clock

## Bathroom

- 2" / 10 Blade Bathroom Breeze Power Bath Vent w/Convenient Wall Switch
- 3 Tier Bath Towel Rack
- 6 Panel - Embossed Wood Grain Passage Doors w/Residential Door Handles
- Large Bathroom Mirror Medicine Cabinet w/ Overhead Make-Up Lights
- Radius, One Piece Molded, Residential Style, Fiberglass Shower w/Seat That Won't Deteriorate w/Age
- Skylight Over Tub
- Foot Flush Porcelain Toilet
- Wall Switched Ceiling Lights in Key Locations

## Cedar Creek Cottage Explorer Package

(1) 32" LCD Flat Panel, HD Television with Full Dolby Digital, Dolby Prologic, Surround Sound Stereo - DVD/CD/Tuner, 30" Residential Microwave, Thermo-Pane Patio Door, Hide-A-Bed Air Mattress Sofa, True Owens Corning Gelcoat Exterior, Black Tank Flush, Sealed Bearing System, 20 Gallon Electric Water Heater, 15,000 BTU Air Conditioner, Fantastic Fan w/Rain Sensor in Kitchen, 9100 Electric Awning, Entire Water Filtration System, Cedar Creek Switch Control Center, Winegard HD Ready Pre-Wire, Elegant Table Lamp

## Options

- (4) Slide Room Awning Toppers
- Penguin 2nd Air Conditioner
- Create-A-Breeze Fan/ Power Lift, Thermostat & Rain Sensor - REAR BEDROOM
- King Size Bed Replacing Queen Bed w/ Shelves (N/A 40CBH)
- Beige La-Z-Boy® Leather Recliners (W/A)
- Dirt Devil Central Vac System (Vacuum Only - No Automatic Dust Pan)
- Customized Decals - Customers Can Have Their Family Name or Their Home Town Displayed as a Graphic on the Cedar Creek Cottage Entry Tag



DEALER



A Berkshire-Hathaway Company

Forest River, Inc. / 501 Hawpatch Road / Topeka, IN 46571

Ph: 260-593-2404 / Fax: 260-593-2447

Visit our website at [www.forestriverinc.com](http://www.forestriverinc.com)

F-66-151 2008 Forest River, Inc. Litho U.S.A.

All illustrations and specifications contained in this literature are based on the latest product information at the time of publication. Forest River, Inc. reserves the right to make changes in prices, colors, materials, equipment and specifications at any time without notice and assumes no responsibility for any error in this literature. All units are shipped F.O.B. Topeka, Indiana. • CONSULT YOUR LOCAL DEALER FOR WARRANTY INFORMATION