

SILVERBACK

GI By CEDAR CREEK

THE NEXT GENERATION





90°+

TURNING RADIUS

You'll love the great towing and handling characteristics of the Silverback II. The aerodynamic, futuristic front cap achieves a 90-degree plus turning radius even when towed by short bed trucks. No more cumbersome sliding hitches to contend with. Plus the attractive pin box cover adds a touch of style.



Living room and kitchen slides are detailed with a beautiful double arched fascia.



Dramatic radiused cabinets and counters create a roomy, high-end residential look and feel



The large entertainment center contains a 32-inch LCD television.



The hide-a-bed sofa with air mattress and La-Z-Boy™ recliners provide plush seating.



The master bedroom suite features a full 6' 4" of headroom and storage galore along with a Forest River Exclusive Serta® Sleeper Mattress.



AN INTERIOR WITH **YOU** IN MIND.

The Silverback GII's 102-inch wide body gives you more square footage of quality living space along with outstanding features and furnishings. All interior windows have beautiful solid wood trim, residential hardwood mini-blinds, and arch-styled valances. Floorplan choices include a kid-friendly model that features a separate bunk room with flip-up bunks and sleeps four comfortably.



FLIP UP BUNKS

Model 34WBH



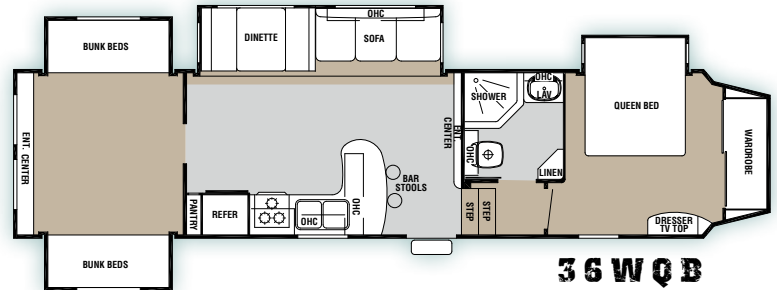
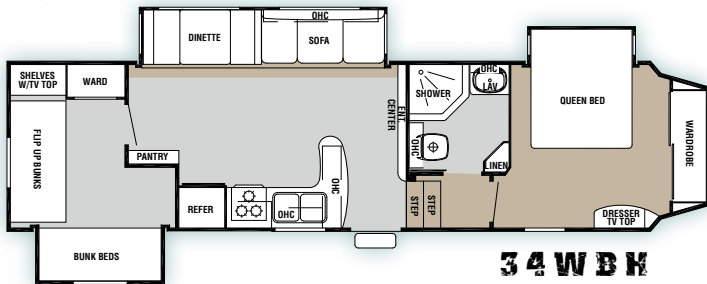
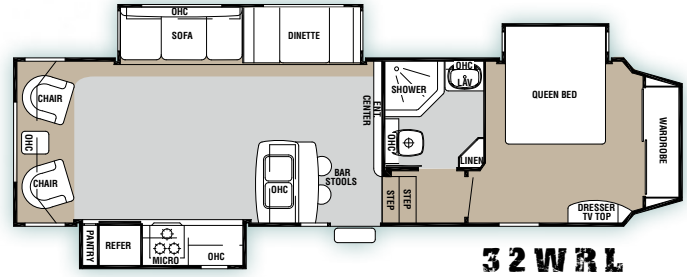
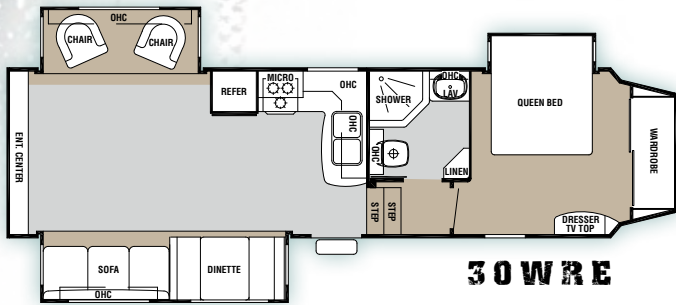
The wide-body gives you more elbow room in the bathroom area. Wider, larger bathrooms, along with residential fixtures, are a defining feature of the new Silverback GII.

AN EXTERIOR WORTH BRAGGING ABOUT.

The cavernous front storage area can be accessed from the front as well as both sides of the unit for easy access. The floor is covered with durable, easy-care diamond plate designed rubber that protects and makes it easier to clean, unlike the dirt-grabbing truck felt used in other RVs. The storage compartment also houses the extensive water filtration system and a handy pull-out exterior shower.



SILVERBACK GII FLOORPLANS



SPECIFICATIONS

Model	30WRE	32WRL	34WBH	36WQB
Exterior Length	33' 8"	34' 4"	35' 1"	38' 2"
Exterior Height with Air Conditioner	12' 9"	12' 9"	12' 9"	12' 9"
Exterior Width	102"	102"	102"	102"
Front Bedroom Interior Height	6' 4"	6' 4"	6' 4"	6' 4"
Hitch Weight	1941	1993	1580	1928
Axle Dry Weight	8030	8557	9688	9251
Unloaded Vehicle Weight	9971	10550	11268	11179
GVWR	13941	13993	13580	15928
Gross Cargo Capacity	3970	3443	2312	4749
Dual Axles (2)	6000# STRAIGHT	6000# STRAIGHT	6000# STRAIGHT	6000# STRAIGHT
Wheel Size	16 X 6	16 X 6	16 X 6	16 X 6
Tire Size	LT235/85R/16E	LT235/85R/16E	LT235/85R/16E	LT235/85R/16E
Awning Size	18'	16'	18'	18'
Furnace Size	35 BTU	35 BTU	35 BTU	35 BTU
Demand Fresh Water Capacity	64	64	64	64
Black and Grey Water Capacity	40/40/40	40/40/40	40/40/40	40/40/40
Sleeping Capacity	6	6	10	6

SILVERBACK GII SPECIAL FEATURES



1. TRAILAIR® AIR RIDE PIN BOX (OPTIONAL) – Lose the jiggles, bumps, chucks and jars with the 5th Wheel Air Ride Pin Box.
2. TRAILAIR® EQUI-FLEX™ FLEXIBLE EQUALIZER – Replace the standard cast iron equalizer between the leaf spring suspension.



NEW AUTOMOTIVE STYLE FRAMELESS WINDOWS

Emergency Roadside Assistance Service Administered by Coach-Net®. Ask your dealer for more information.

STANDARDS & OPTIONS

EXTERIOR FEATURES

- #30 Gas Bottles w/Bottle Cover & Automatic Change Over
- (2) Scare Lights
- 102" Wide
- 110 Volt Exterior Outlet
- 12 Volt Battery Disconnect
- 15,500 LB Rated Extended Pin Box
- 16" Tires
- 30" Radius Front Door Entry w/Deadbolt Lock & Drip Cap w/"Soft Top" Entry Storm Doors
- 55 Amp Power Converter
- A & E 9100 Series Electric Awning (Pkg.)
- Aluminum Rims
- Artwork Decals
- Below Floor Fresh Water Tank for More Interior Storage
- Black Tank Flush (Pkg.)
- Break Away Switch
- Cambered 10" I-Beam
- Docking Station w/5 Easy Access By-Pass Valves for the Water System
- Sealed Bearing System
- Enclosed & Insulated Underbelly
- Four Wheel Electric Brakes
- Front Power Electric Jacks
- Front Storage 12 Volt Compartment Light
- Front Storage for Spare Tire w/Flip-Up Lid
- Hitch Light
- Large Entry Assist Handle
- Lighted Entry Step
- Lockable, Clamp Ring, Radius Baggage Doors w/ Thumb Grip & Door Catch
- Lower Rear Cap w/LED Rear Signal Lights
- Automotive Style Frameless Windows
- New Front Cap w/90°+ Turning Radius on Short Bed Trucks
- New Outside Power Center
- Porch Light
- Rubber Seals for Superior UV & Weather Protection
- Smooth, Easy Operating, Easy Grip, Entry Steps — Extra Wide for Confident Footing
- Diamond Plate Designed Rubber Covers the Convenient Front Storage Compartment — No Dirt Grabbing Truck Felt
- LED Taillight Assembly
- UV Automotive Paint Coating is Placed on the Refrigerator Vent to Prevent Premature Color Changes
- White Enamel Roof Ladder
- Wide Stance, Quick Release, Front Facing Jack Pins
- Trailair® EquaFlex™ (Pkg.)
- Wireless Remote Control System for Front Landing Gear, Slide-Out Rooms, Electric Awning, (1) Exterior Patio Light & (1) Interior Safety Light (w/all units manufactured after 8-1-08)

KITCHEN

- Beautiful Solid Birch, Residential Cherry, Arched Overhead Cabinets in the Kitchen Area
- Combination Knife & Spice Rack
- Congoleum® Diamondflor® Armorguard® Vinyl Floor Covering
- Create-a-Breeze Fan w/Thermostat & Rain Sensor in Kitchen
- Crown Molding Complementing all Overhead Cabinets in Kitchen Area
- Durable, Residential Stainless Steel Sink w/Full Twin Deep Wells & Includes a High Rise Swivel Spout & (1) Sink Cover

- Entire Water Filtration System which Includes Tank & City Water — Even Your Shower Water is Filtered (Pkg.)
- Full 42" Easy Entry, Double Pedestal Dinette Table
- Halogen Flat Surface Lighting in Kitchen Area
- Larger 64-Gallon Demand Water System
- Lazy Susan (Where Applicable)
- New Laminate Countertop
- Pantry (W/A)
- Pre-Drilled & Counter Sunk Fastened Cabinetry w/Lumber-Cor® Cabinet Stiles
- Premium Banak Hardwood Framing Lumber on all 1" Material
- Residential Style Roller Drawer Guides w/Travel Locks — No Binding
- Silverware Drawer
- Solid Birch Hardwood Drawer Fronts w/Baltic Birch Side & End in Convenient 5" & 8" Sizes
- Toe Kicks at the Base of the Kitchen Cabinets

LIVING ROOM

- LCD Flat Screen Television (Pkg.)
- Ceiling Fan w/Light
- Embossed Woodgrain Passage Doors w/ Residential Door Handles
- Hide-A-Bed Sofa w/Air Mattress & Bedding Storage Area (Pkg.)
- La-Z-Boy™ Rocker Fabric Recliners *a Forest River Exclusive*
- Phone Jack
- Residential Hardwood Mini-Blinds w/Solid Wood Window Trim
- Upgraded Lighting at Sofa & Decorative Overhead Dinette Light
- Valances Through Out Except in the Bedroom Area
- Wall Clock
- Wall Switched Ceiling Lights in Key Locations
- Solid Birch Fascia on Living Room Slide-Outs

BEDROOM / BATHROOM

- 12" -10 Blade Bathroom Breeze Power Bath Vent w/Convenient Wall Switch
- Color Coordinated Pillow Pkg. w/Quilted Bedspread, Which Includes Elastic Mattress Grips
- Full 60" x 80" Queen Bed w/a Residential Style Headboard
- Full 6' 4" of Headroom
- Large Bathroom Mirror Medicine Cabinet
- Mirror Bath Door
- Mirror Over the Dresser
- One Piece Molded Residential Style Fiberglass Shower w/Seat & Full Glass Surround
- Porcelain Toilet (Pkg.)
- Queen Pillowtop Mattress
- Serta Sleeper™ Mattress *a Forest River Exclusive*
- Skylight Over the Shower
- Soft Bronze Glaze on All Interior Mirrors

APPLIANCES

- 10 Gallon Water Heater
- 12 Volt Battery Disconnect
- 15,000 BTU Air Conditioner
- 30 Amp Detachable Power Cord
- 30" Over the Range Microwave (Pkg.)
- 10 Gallon Gas/Electric DSI Water Heater (Pkg.)
- 8 Cu. Ft. Refrigerator w/Temperature Controls (Pkg.)
- Carbon Monoxide Detector
- Digital Residential Style Thermostat for Heat & Air Conditioner

- LP Gas Detector
- Smoke Detector
- Solid State 55 Amp Power Converter
- Suburban 35,000 (Minimum) BTU Furnace
- Wall Mount Monitor Panel
- Water Heater By-Pass System for Winterization

SILVERBACK GII EXPLORER PACKAGE:

LCD Flat Panel HD Ready Television, New Dolby Digital, Dolby Prologic, Home Theater System with Subwoofer, DVD/CD/Radio Tuner Stereo System, 8 Cu. Ft. Refrigerator, Hide-a-Bed Sofa with Air Mattress, 30" Residential Microwave, True Owens Corning® Gelcoat Exterior, Black Tank Flush, 16" Tires, Equa-Flex™ Suspension, Porcelain Toilet, Bathroom Breeze Power Fan, 9100 Series Electric Awning, Rear Stabilizer Jacks, Tinted Safety Glass, Entire Water Filtration System, Cedar Creek Switch Control Center, Winegard HD Roof Satellite Prep

OPTIONS

- Rear Electric Jacks
- Slide-Room Awning Toppers
- 36" Corner Tub w/Seat Replacing the Shower
- 12 Volt Heated Holding Tank
- 50 Amp Service Only (Mandatory if Ordering Brace & Wire for 2nd Air)
- Penguin 2nd Air Conditioner
- Exterior 12 Volt Stereo System
- Brace & Wire for 2nd Air Conditioner
- Solid Birch Freestanding Table w/Extensions & Full Storage Drawer
- Leather La-Z-Boy™ Recliners — Beige Leather
- Thermopane Windows (Tinted)
- New Dirt Devil® Central Vac System
- Trailair® Air Ride Pin Box

DECOR OPTIONS



Rocky Road



Desert Sky



Hardy Sage



Jethro Rust



Sand Dollar



Santa Rosa Harvest

SILVERBACK

GII By CEDAR CREEK

ALUMINUM CAGE CONSTRUCTION



State-of-the-art construction techniques along with top grade building components give Cedar Creek its reputation for long-lasting quality.



Cold room tested to zero degree fahrenheit with standard insulation and optional heating pads with no tank freezing!



SIDE WALLS: R-VALUE = 9

- Handmade 2 x 2 - 16" (or less) OC Sidewalls with Individually Fastened Custom "L" Brackets Combined with Uniroyal® Silaprene Adhesives for a Strong Flexible Frame without Welding or Lamination. (475 PSI at 2" Per Minute, Marine Grade)
- True Owens Corning™ Performance Plus Gelcoat on all Exteriors — The Best of the Best in Fiberglass
- All Baggage Doors and Entry Doors are Made out of True Owens Corning™ Performance Plus Gelcoat to Prevent Uneven Aging of Your Unit
- Automotive UV Clear Coat Paint, Guaranteed for 7 Years, on all Refrigerator Vents, Microwave Vents, and Entry Door Window Frames, Preventing Early Discoloration
- Sidewalls are Bolted to the Floor with 5/16" x 6-1/2" Carriage Bolts at each Outrigger
- Glued R-7 Fiberglass Insulation Expanded to its Full Capacity within the Sidewall Frame
- Designed by Forest River, a New Unique Slide-Out Seal System for Tighter, Stronger Water Protection — First of its Class — Compare It!
- 5 Direction Insulation in all Slide-Out Rooms

ROOF: R-VALUE = 17

- 1/4" Foam Cor® Insulation Board Weather Barrier (R1 Value)
- Full Length 3/8" Wood Roof Decking for a Full Walk On Roof (Screwed - Not Stapled)
- R-14 (Fiberglass Insulation Only) — Roof Decking, Foam Cor®, and Rubber Membrane are not Included within This R-Value
- 2 x 2 - 16" OC - 4" Truss Roof Frame Combined with Uniroyal® Silaprene
- 2 Ply - Tuff Ply Rubber Roof Membrane with Built-In Fire Retardant
- Full Length Drip Rails with Spouts from the Front to the Rear
- Roof is Bolted to Sidewall with 5/16" x 3-1/2" Carriage Bolts
- New 3" Roof Radius

FLOORS: R-VALUE = 17

- 3" Aluminum Frame Floor with In-Floor Heat Ducting and Custom "L" Brackets Combined with Uniroyal® Silaprene Adhesives
- 5/8" Tongue and Groove Plywood, Marine Grade
- Cambered 10" I Beam "Z" Frame with Large Support Outriggers and Full Length Welds
- The Tongue and Groove Plywood Floor is Attached to the Aluminum Frame with Silaprene and Screwed every 5"
- Darco Waterproof Underbelly
- Fully Enclosed 4' x 8' ABS Removable Panels for Easier Access into the Underbelly
- R-14 Fiberglass Insulation Only — Plywood, Vinyl, Carpet, Tank Heaters, Carpet Pad, etc. are not Included within These R Values

YOUR SILVERBACK GII DEALER



A Berkshire-Hathaway Company

The Smart Choice for the Experienced RV'er
Fifth Wheels by Forest River

Forest River, Inc. / 501 Hawpatch Road / Topeka, IN 46571

Ph: 260-593-2404 / Fax: 260-593-2447

Visit our website at www.forestriverinc.com

All illustrations and specifications contained in this literature are based on the latest product information at the time of publication. Forest River, Inc. reserves the right to make changes in prices, colors, materials, equipment and specifications at any time without notice and assumes no responsibility for any error in this literature. All units are shipped F.O.B. Topeka, Indiana. • CONSULT YOUR LOCAL DEALER FOR WARRANTY INFORMATION

F-66-169 2008 Forest River, Inc. Litho U.S.A.