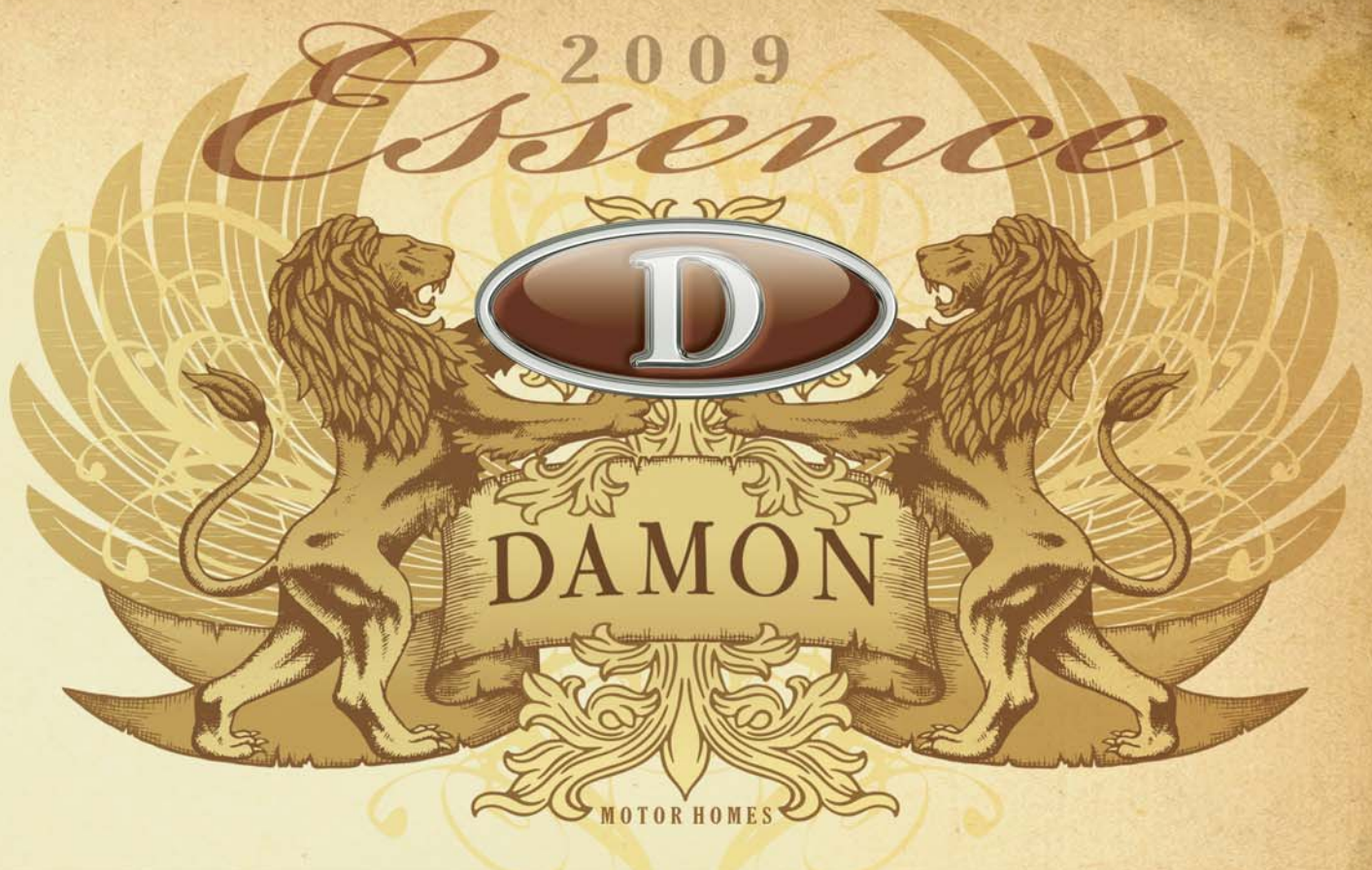
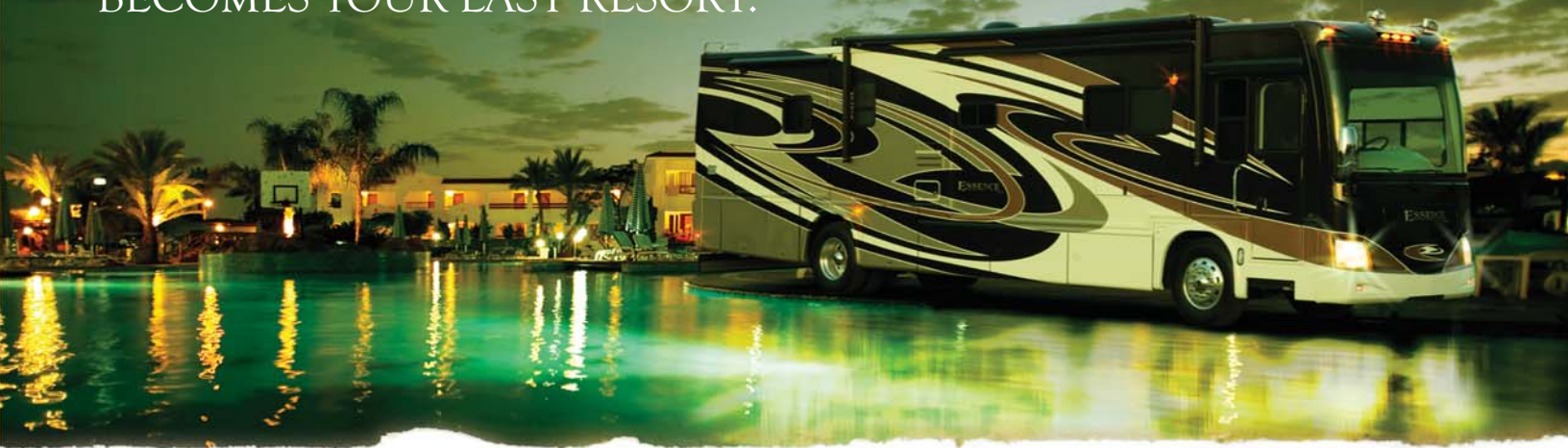


ESSENCE BY DAMON



WHERE A LUXURY SUITE ON WHEELS
BECOMES YOUR LAST RESORT.



Luxury Class-A Diesel



Sable Sand full body paint (shown) gives an almost mirror finish.

Essence

WHERE EVERYTHING'S HIGH END,
EXCEPT FOR THE PRICE TAG.



ULTRA-LEATHER SOFA/DINETTE
ENSEMBLE. (optional on 40A)

Exceptional luxury married with lasting value is a rare commodity. Of course, there's nothing ordinary about Damon's high-end Essence diesel class A motor coach. From the ground up, Essence is crafted for the luxury diesel buyer who wants the most for the money. What other brands list as options, Essence provides in the base price. And innovation truly abounds here. This is the coach of your dreams.

WE'RE DAMON.

Damon has led the way in motorhome design and manufacturing for over 20 years. Creative floorplans, higher standards in quality, better after-the-sale support, and proven customer satisfaction have helped make Damon a superior brand name. As with each of Damon's products, you'll find high-end amenities, without the high-dollar prices.



SLEEP NUMBER® MATTRESS REMOTE.

THE *Essence* OF LUXURY LIVING.

As with all Damon luxury coaches, beautiful interiors make lasting first impressions. Completely unique and innovative floorplans also set them apart. There's more than meets the eye with Essence as



well. Exquisite, hand-crafted amenities like burled wood VIP SmartWheel let's the driver know he's sitting in the lap of luxury. Solid wood raised panel cabinet doors are more common to those found in expensive homes. And you'll be pampered with modern electronic features, plush and overstuffed Villa® furniture, solid construction and much more. Essence lets you escape from the ordinary.



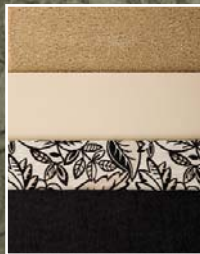
INTERIOR COLORS

Choose from three distinct interior decors. World-class design, colors and quality.

SAFFRON MINT



VANILLA BEAN



VENETIAN



4-DOOR RAISED-PANEL
REFRIGERATOR W/HARD
WOOD FRONT.



ESSENCE MODEL 40A SHOWN IN VANILLA BEAN DECOR.



PANORAMIC WINDSHIELD ENHANCES YOUR ROOM WITH A VIEW.



42" OR 52" LCD TV BY MODEL.



GLAZED MAPLE
Solid wood raised
panel door and
drawer fronts.



CHERRY
Standard wood.
Doors have hidden
hinges.



VIP (SMART WHEEL) STEERING WHEEL.



SLEEP-NUMBER™ SELECT COMFORT® MATTRESS IS STANDARD.



CORIAN® SOLID SURFACE COUNTERTOPS.

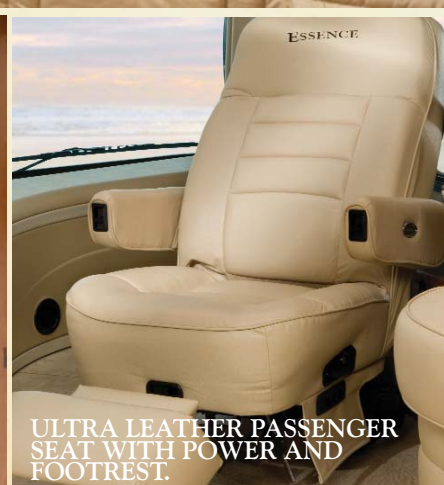


32" OUTSIDE LCD TV.

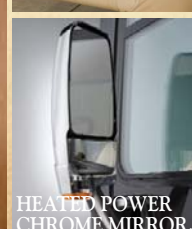
RAISED RAIL CHASSIS WITH FULL PASS-THROUGH STORAGE.



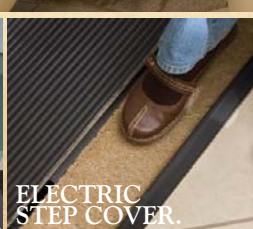
FIBERGLASS FULL-HEIGHT SHOWER SURROUND WITH GLASS DOOR.



ULTRA LEATHER PASSENGER SEAT WITH POWER AND FOOTREST.



HEATED POWER CHROME MIRROR, W/CAMERA.



ELECTRIC STEP COVER.

BUILT RIGHT, THE WAY YOU'D DO IT!

You get more with Damon. Neoprene vibration dampening, all openings framed in aluminum, galvanized steel underbelly, heated holding tanks from furnace, and more. All built to higher specifications!

ROOF:

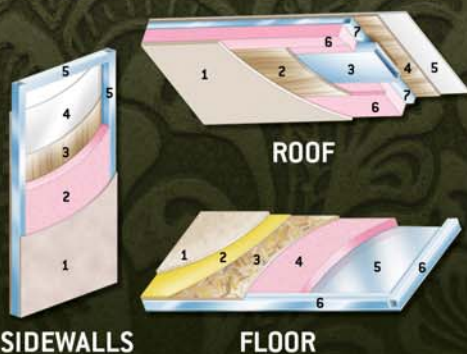
- 1) Padded ceiling
- 2) Lauan (wood)
- 3) Air cond. duct
- 4) Lauan (wood)
- 5) TPO roofing
- 6) Insulation
- 7) Aluminum frame

SIDEWALLS:

- 1) Interior panel
- 2) 1-1/2" block foam insulation
- 3) Lauan backer
- 4) Ext. fiberglass
- 5) Aluminum frame (tubing)

FLOOR:

- 1) Carpet
- 2) Padding
- 3) Structurwood® flooring
- 4) Block foam
- 5) Galvanized metal
- 6) Steel frame



FREIGHTLINER Custom Chassis

RAISED RAIL CHASSIS

This Freightliner XC raised-rail chassis and 425 HP Cummins ISL diesel is top-of-the-line. It provides 1200 ft/lb of torque, has an in-block 1000 W engine heater, and 6-speed Allison transmission.



IN ESSENCE, THE HIGHEST RETURN FOR YOUR INVESTMENT.

(FLOORPLANS AVAILABLE STARTING IN JANUARY 2009)



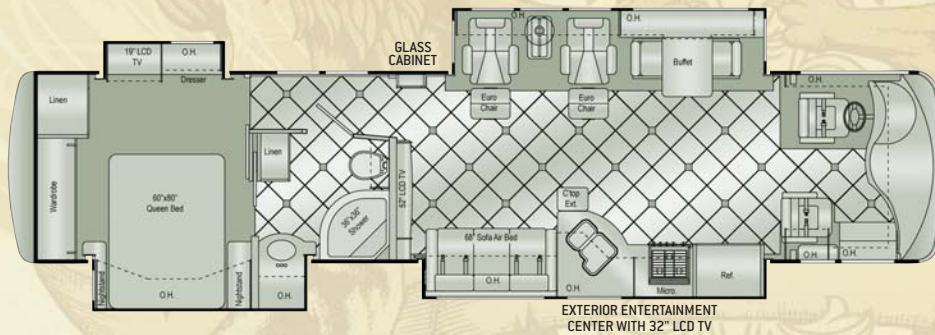
40A *Essence*

CHASSIS	FREIGHTLINER
WHEELBASE	266
OVERALL LENGTH	40'6"
OVERALL WIDTH	101"
OVERALL HEIGHT WITH AC	13'1"
GVWR	32,400
GCWR	42,400
FRESH WATER	95.5 (GAL.)
WATER HEATER	10 (GAL.)
GREY/BLACK WATER	51/51 (GAL.)
LP (LBS.)	126
SLEEPING CAPACITY	5
EXTERIOR STORAGE	215 (CU. FT.)
INTERIOR DRAWERS	12
INTERIOR DRAWER CAPACITY	13.25 (CU. FT.)
FUEL CAPACITY	100 (APPROX. GAL.)



40B *Essence*

CHASSIS	FREIGHTLINER
WHEELBASE	266
OVERALL LENGTH	40'6"
OVERALL WIDTH	101"
OVERALL HEIGHT WITH AC	13'1"
GVWR	32,400
GCWR	42,400
FRESH WATER	95.5 (GAL.)
WATER HEATER	10 (GAL.)
GREY/BLACK WATER	51/51 (GAL.)
LP (LBS.)	126
SLEEPING CAPACITY	5
EXTERIOR STORAGE	215 (CU. FT.)
INTERIOR DRAWERS	12
INTERIOR DRAWER CAPACITY	13.2 (CU. FT.)
FUEL CAPACITY	100 (APPROX. GAL.)



40C *Essence*

CHASSIS	FREIGHTLINER
WHEELBASE	266
OVERALL LENGTH	40'6"
OVERALL WIDTH	101"
OVERALL HEIGHT WITH AC	13'1"
GVWR	32,400
GCWR	42,400
FRESH WATER	95.5 (GAL.)
WATER HEATER	10 (GAL.)
GREY/BLACK WATER	51/51 (GAL.)
LP (LBS.)	126
SLEEPING CAPACITY	5
EXTERIOR STORAGE	215 (CU. FT.)
INTERIOR DRAWERS	18
INTERIOR DRAWER CAPACITY	13.2 (CU. FT.)
FUEL CAPACITY	100 (APPROX. GAL.)



40D *Essence*

CHASSIS	FREIGHTLINER
WHEELBASE	266
OVERALL LENGTH	40'6"
OVERALL WIDTH	101"
OVERALL HEIGHT WITH AC	13'1"
GVWR	32,400
GCWR	42,400
FRESH WATER	95.5 (GAL.)
WATER HEATER	10 (GAL.)
GREY/BLACK WATER	51/51 (GAL.)
LP (LBS.)	126
SLEEPING CAPACITY	5
EXTERIOR STORAGE	215 (CU. FT.)
INTERIOR DRAWERS	12
INTERIOR DRAWER CAPACITY	13.1 (CU. FT.)
FUEL CAPACITY	100 (APPROX. GAL.)



ESTATE GREEN



SABLE SAND



MADRID

Standard & Optional Amenities

EXTERIOR

- Full body paint package including color coordinated slideroom awning(s)
- Color coordinated awning package including electric patio with wind sensor & entry door awning with remote control
- Color coordinated window awnings
- Fog lights
- Rear ladder
- Front and rear fiberglass caps
- Upgraded gel coat wall
- Locking aluminum exterior storage doors
- Side-hinged compartment doors (passenger side)
- Custom-designed front entry door with screen and keyless lock with integrated keypad, actuator and fobs
- Black framed dual pane radius corner windows
- Exterior entertainment center with 32" LCD TV
- Invisible bra

CHASSIS

- Freightliner XC raised rail chassis
- 425-hp ISL Cummins engine
- Allison MH-3000 automatic transmission - 6 speed
- Jacobs compression Brake "Jake Brake"
- Air-ride suspension
- 22.5" radial tires
- Hydraulic leveling jacks (up & down)
- Full width stainless stone guard with DAMON letters stencil
- Trailer hitch (10,000 lbs.)
- Dual fuel fills
- Aluminum Wheels (Set of 4)

COCKPIT

- Large front mount chrome power mirrors "V-Max" with heat and integrated: side cameras with color

- In dash digital touch-screen multi-media system with DVD 5.1 Home Theater, 3-camera backup color monitor, AM/FM/ CD, MP3, Ipod, SD Card Reader, USB, Bluetooth, GPS Navigation and Satellite ready
- Electronic cruise control
- Padded 4-spoke 18" "Smart Wheel" steering wheel with burl wood, leather wrapped and switches
- Electric Windshield Day/Night Privacy Shade with Manual Side Shades - Full Width
- Ceramic tile with decorative keys throughout
- UltraLeather reclining driver's seat with 6-way power
- UltraLeather oversized passenger seat with 6-way power and electric footrest
- Electric step well cover
- GPS navigation system (on units produced after Jan. 09)

LIVING AREA

- UltraLeather sofa bed
- UltraLeather sofa/air bed
- Day/night shades
- 42" LCD TV with full function remote and antenna, booster, and jack
- Recessed halogen lighting with dimmers

- Ceramic tile flooring with decorative keys throughout living area, kitchen and bathroom

KITCHEN

- Refrigerator: four door with icemaker
- Sealed 3-burner Cooktop
- 1.1 cu ft space saver microwave/convection oven
- Single lever faucet with sprayer
- Corian® solid surface countertops and backsplash
- Solid wood cabinet doors throughout (glazed maple or cherry)
- Buffet with additional storage and four chairs (two fixed and two folding)
- UltraLeather U-dinette with hard-wood table (40D)
- Fantastic® power vent with rain sensor and remote

BEDROOM

- Sleep-Number® Mattress (By Select Comfort)
- Bedspread with throw pillows
- 20" LCD TV with full function remote
- Day/night shades
- AM/FM stereo / CD player
- DVD Player
- 76" x 80" king bed

BATHROOM

- Fiberglass full height shower surround with door and integrated seat
- Skylight in shower
- Obscure glass window in private stool area
- Foot flush porcelain toilet with sprayer

UTILITIES

- Carrier® Heat pumps (2) with Low Profile A/C with remote
- Furnace: 34,000 BTU electronic ignition floor-ducted
- Water heater: 10-gallon gas/electric with electric ignition with blending valve (equals 16 gallons)
- Generator: Onan® 8.0 kW Quiet Diesel
- Automatic Generator Start
- 2000-watt inverter/100-amp converter
- 50-AMP, 120-volt service with Electric cord reel
- Energy management system
- Enclosed heated potable and holding tanks
- Black tank flush
- 3-Way valve for tank/city water fill
- Washer/dryer prep
- Kingdome automatic satellite dish
- Exterior shower
- Monitor panel with LPG readout
- Central vacuum system with toe kick dustpan

OPTIONS

- Easy slide storage tray
- Roof Mounted Remote Spotlight
- UltraLeather sofa/dinette ensemble (40A)
- UltraLeather booth dinette with table (40B, C)


YOUR LOCAL ESSENCE DEALER:

Coach-Net® rapid response  RVIA Go RVing.



MORE DETAILS ONLINE Visit us online for more information about Damon products. Learn about each of Damon's Gas and Diesel Class-A models as well as the exciting new Avanti fuel-efficient clean diesel. Once online, you can take virtual tours, explore 360° viewable interiors, see additional features and find more for less: **ESSENCERV.COM**



P.O. BOX 2888 • ELKHART, IN 46515 • CUSTOMER SERVICE: 800-860-3812 • SALES DEPARTMENT: 800-860-5658 • DAMONRV.COM 

Due to constant product improvements, the specifications, component parts and standard/optional equipment are subject to change without notice or obligation. Product photography or diagrams may show equipment that is optional. Damon Motor Coach reserves the right to make changes in prices and models and to discontinue models without notice or obligation. Components, parts or chassis may have been manufactured at times other than the model year indicated. All capacities are approximate and dimensions are nominal. All dry weights are based on standard model features and do not include optional features or equipment. Various RV components and features may differ to conform to local codes. Due to EPA environmental restrictions, engine power and torque ratings may change mid-year.