



WHEN YOU KNOW THE DIFFERENCE™

09

ESSEX

Essex



LIGHTS CAMERA ATTRACTION

Just try to peel your eyes away from the 2009 Essex. You'll be hooked with one glance at its dramatic lines, shimmering surfaces and gorgeous fabrics. Some may call it an infatuation or obsession. You'll just want to call it yours.







VIP ENTRANCE



Who's at the door? The residential doorbell signals your company's arrival. Essex's roomy living area sets a perfect ambiance for entertaining. With its plush Ultrasuede furniture, soft track lighting and Sony® 40" LCD TV with Surround Sound system, it's guaranteed to be a night guests will remember.



MAKE A DRAMATIC
STATEMENT



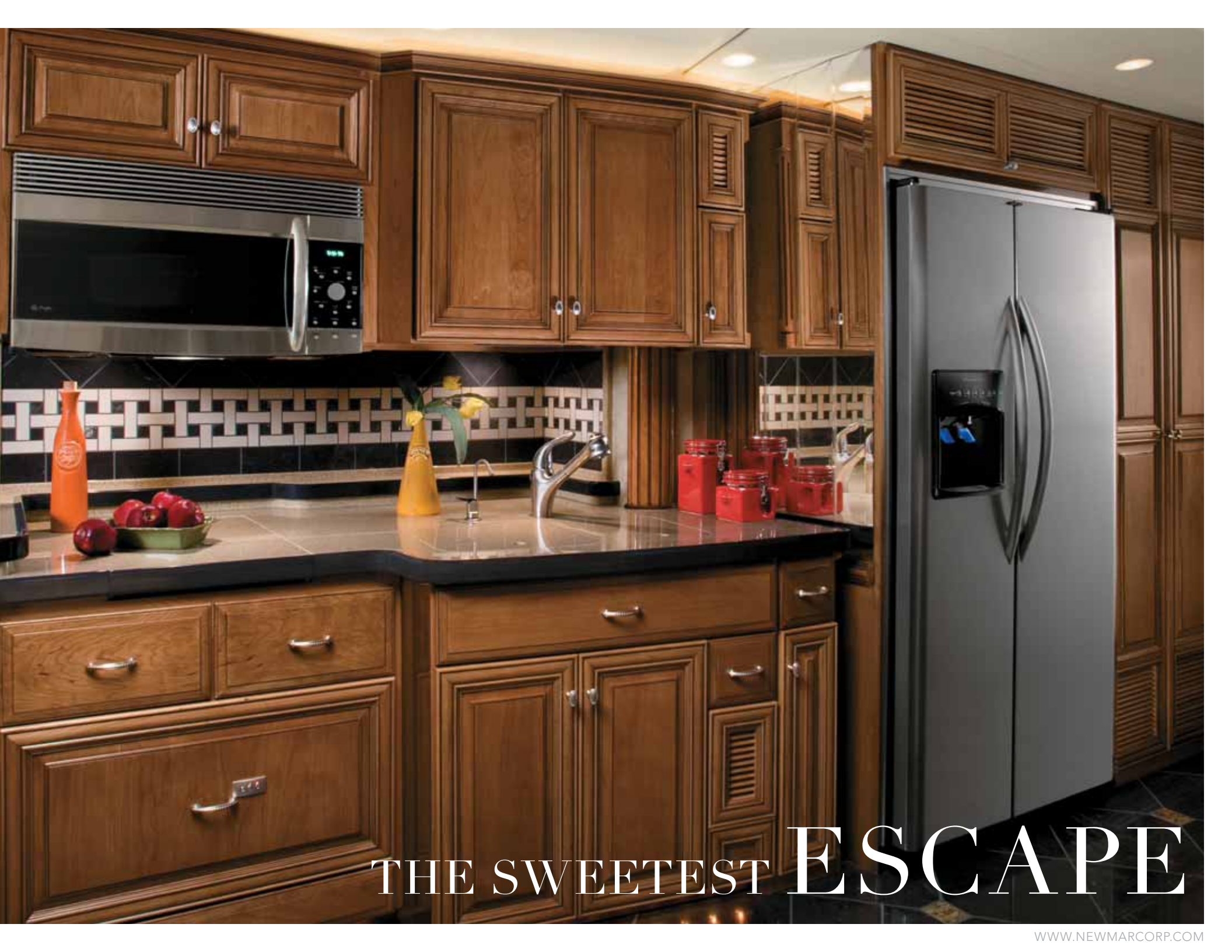
Essex embodies bold, innovative design. Inspiration began with one distinctive detail—its headlights. Now this gorgeous coach shines for you, thanks to Full-Paint Masterpiece™ Finish with Super Clear Coat.

But there's more to Essex than meets the eye. Underneath its sophisticated frame is the unflinching support of a Spartan® K2 chassis. Essex is a durable structure that's brimming with accommodating features, such as a power cord reel and redesigned water works compartment that makes hose hookup cleaner and simpler.



Slice, dice and bake something delicious, too. Essex houses a residential kitchen with the high-end appliances you crave. Take, for instance, the optional GE® Profile™ Advantium® microwave oven, which reduces cooking time by one-third, and the Norcold® 17 cubic foot, side-by-side refrigerator. And with the efficiency of the optional Fisher & Paykel DishDrawer®, the dishes practically do themselves.

From the designer faucets and polished porcelain floors to the sleek Corian® countertops, your kitchen feels tailor made. Every detail counts. Newmar's signature hardwood cabinets are handcrafted with adjustable shelves and deep storage space.



THE SWEETEST ESCAPE



YOUR 15 MINUTES STARTS **NOW**



Fame is yours the moment you step behind the wheel. Turn the key to unleash the acclaimed power of Essex's Cummins® ISM 500 Hp engine. The driver command center keeps you in step as the coach accelerates. Its touch screen monitor is equipped with sideview camera displays, SIRIUS® Satellite Radio and a Garmin® navigation system with convenient service center locations

programmed right in. Essex drives with the confidence of a luxury automobile, thanks to exclusive Comfort Drive™ Steering. It's a Newmar innovation that lets you back up, turn and change lanes with ease. Steering resistance also adjusts to provide an incomparable driving experience.



Classic elegance and comfort radiate from your master bedroom. See the chic duvet, window décor and spacious cedar-lined closet? It's no surprise Essex is a crowd favorite.

Bedtime beckons. As you settle in, listen to your Bose® Wave® music system or better yet, watch your Sony® LCD TV, which you can control from anywhere in the coach with the pre-programmed universal remote control. Do you prefer your mattress firm or feather soft? The King-Sized Bed's optional Comfortaire Air mattress lets you and your partner adjust your own comfort levels using air chamber technology.



LUXURIOUS NEVER
GOES OUT OF
STYLE

DÉCOR & EXTERIORS

Essex's six hardwood cabinet options pair well with any of the color combinations below.



BORDEAUX



CAPRI BLUE



CRÈME BRÛLÉE

Ginger Glazed Cherry



Ginger Glazed Cherry
High Gloss



Natural Cherry



Natural Maple



Newport Cherry



Rattan Maple Glazed



EBONY



VANILLA BEAN



ZODIAC

2009 ESSEX FEATURES

STANDARD FEATURES

CHASSIS FEATURES

Spartan® K2 Chassis with IFS
Cummins® ISM 500 Hp
Allison® 4000 MH Transmission
Tag Axle
Automatic Traction Control
Comfort Drive™ Steering with Power Column and Adjustable Control
Accuride® ACCU-SHIELD™ Non-Polish Aluminum Wheels
HWH® Four-Point Hydraulic Jacks with Single Touch Control and Chassis Air Leveling
Power Tilt and Telescope VIP Smart Wheel® with Burl Wood Memory Settings for Driver's Seat, Pedals, Steering Wheel and Exterior Mirrors
Cruise Control
Recessed Fuel Fills with Crossover to Fill from Either Side
Back-Up Alarm
Anti-Lock Braking System
Front Disc Brakes
Electronic Chassis Information Display in Dash
Tire Pressure Monitor System
Chassis Service Center
Leece-Neville 200-Amp Alternator
55-Degree Cramp Angle

AIR CONDITIONING AND HEATING

Three 15M Penguin™ Heat Pump Central Air Conditioners with Remote Control Thermostat
Hydronic Zone Heating System
Dash Heater and High-Output Air Conditioner
Propane Leak Detector
Roof Air Conditioning Drainage System

APPLIANCES AND ACCESSORIES

30" Convection Microwave Oven
Two-Burner Recessed Cooktop
Polished Corian® Range Cover
Norcold® 17 Cu.Ft. Four-Door Refrigerator with Auto Defrost, Icemaker and Water Dispenser
One-Piece Washer/Dryer Prep
Sony® 40" LCD TV in Living Area*
Sony® 32" LCD TV in Bedroom
TripTek™ Electronic Travel Information (Displayed on Rearview Monitor)

Sideview Cameras with Image Displayed on Rearview Monitor Screen
Surround Sound System with CD and DVD Player
Bose® Wave® Radio with CD Player and Alarm Clock in Bedroom
TV Antenna with Power Lift, One Exterior Jack and Two Interior Jacks
"TV Antenna Is Up" Warning Signal
Satellite Prep—Phone, TV Jack and Receptacle
Kenwood® AM/FM/SIRIUS® Satellite Radio-ready with CD and Touch Screen Monitor (Does Not Include SIRIUS® Monthly Subscription)
Auxiliary Input for MP3 Player
Garmin® Navigation System Displayed through Dash Touch Screen Monitor
Telephone Connection with Phone Jacks in Living Area and Dash Area
Air Horns
8.5" x 11" Safe
Pre-programmed Universal Remote Control
Audio/Video Smart-Source Switch with Remote Control
Cable TV Connection with Rg6 Coax
High Definition Component Wiring and HD-ready Video Switching System
Sony® DVD Player in Bedroom
10 Bc Fire Extinguisher, and Carbon Monoxide and Smoke Detectors

CABINETS AND FURNITURE

Natural Maple Hardwood Unitized Cabinets with Fully Overlayed Raised-Panel, Double-Cathedral Cabinet Doors
Hidden-Leaf Dinette Table with Corian® Top and Four Chairs (Two Fixed, Two Folding)*
Polished Corian® Countertop in Kitchen with Undermounted Solid Surface Sink and Flush Sink Covers
Polished Corian® Countertop in Bathroom with Integrated Bowl
Polished Corian® Countertop on Bedroom Nightstands
Adjustable Pullout Pantry Shelves*
Residential Style Full Extension Ball Bearing Drawer Guides
Drawers with Dovetailed Sides and Beech Bottoms
Concealed Hinges on Cabinet Doors
Villa™ Furniture
Ultraleather/Vinyl Heated Driver Seat with Eight-Way Power, Power Lumbar and Power Recline
Ultraleather/Vinyl Heated Passenger Seat with Eight-Way Power, Power Lumbar, Power Recline and Power Footrest

Lifts on Bed Top to Access Storage Area
Cedar Paneling in Rear Wardrobe
Carpeted Wardrobe Bottoms with Pearl Cream Headliner on Shelves and Overhead Cabinets
Storage Shelves Recessed into Rear Cap of Rear Wardrobe Floorplans
Turn-Free Radius Cornered Mattress with Quilted Bedspread, Matching Bed Skirt and Accent Pillows
King Bed with Hardwood, Raised-Panel Bed Base

ELECTRICAL FEATURES

12.5 kW Cummins Onan® Diesel Quiet Generator on Hydraulic Slide and Auto Changeover
50-Amp Electrical Service with Flexible Cord on Power Cord Rewind Reel
Four 6-Volt House Batteries on Pullout Tray
Battery Disconnect Switch
110-Volt Exterior Receptacle
Exterior TV Jack
5-Watt Solar Panel
2,800-Watt Pure Sine-Wave Inverter with Automatic Generator Start
Multi-Plex Electrical System
Emergency Start Switch
Exterior Security Lights on Each Side
Midship Side Turn Signals
Recessed Docking Lights
Switched Receptacle for Engine Block Heater
Recessed Halogen Lights in Ceiling and Overhead Cabinets
Lighted Wardrobes with Automatic Switches
Slideout Information Voice Module
Manually Operated Hold-to-Run Slideout Switch
ICC Light Flasher Switch
Two 12-Volt Auxiliary Receptacles on Dashboard
Interior Courtesy Lights
Mood Lights in Lambrequins, Kitchen Valance and Bed Base
Daylight Headlight System

EXTERIOR FEATURES

Full-Paint Masterpiece™ Finish with Super Clear Coat and Front Protective Film
One-Piece Bonded Windshield
Convex Exterior Chrome Mirrors with Remote Control, Defrost and Turn Signals
Front Entrance Door with Automatic Double Step
Dual Latch Front Door with Power Flush Stepwell Cover

Lighted Exterior Storage Compartments with Cargo Liner and Automatic On/Off Lights
Pantographic Baggage Doors with Side-Hinged Baggage Doors Under Slideout*
Power Locking Baggage Doors
15,000 lb. Towing Hitch with Two Extra 14-Gauge Wires
Lighted Acrylic Assist Handle at Entrance Door
Rear Protective Tow Guard with Stainless Steel Newmar Name Cutout
Holding Tank Levels Displayed in Exterior Water Works Compartment
Squeegee in Exterior Compartment
Undercoating
Mud Flaps

INTERIOR FEATURES

Sculpted Padded Vinyl Ceiling
Power Duo Day/Night Privacy Window Shades (Windshield and Driver/Passenger Side Windows)
Lined Day/Night Pleated Window Shades and Lambrequins
Hardwood Fascia on Living Area Slideout
Polished Corian® Window Sills
Polished Porcelain Floor Tile in Kitchen, Bathroom and Entrance Areas
Raised-Panel Interior Passage Doors
Deluxe Carpeting with High-Density Padding and Sculptured Carpet in Living and Bedroom Areas
Interior Assist Handle at Main Entrance Door
Power-Activated Sun Visors

PLUMBING AND BATH FEATURES

Demand Water System with Aquajet™ "ES" Pump
Sewage and Grey Holding-Tank Rinse
Thetford™ Aria Sculptured China Stool (Thetford™ Vacuum Flush Stool in Rear Baths)
Towel Bar, Tissue Holder, Towel Ring and Robe Hook
Exterior Convenience Wash Station—Hot/Cold Water, Soap and Towel Dispenser
Fiberglass Tub/Shower and Glass Shower Door
Two Monitor Panels (One Interior and One in Exterior Water Compartment)
MANABLOC® Plumbing System
Monoplex Water-Pump Switches Located in Bathroom, Kitchen and Near Gate Valves
Auto Water-Fill System
Designer Faucets in Bathroom and Kitchen
Whole House Water Filter

Water Filter with Drink Dispenser at Kitchen Sink
Power Rewind Water-Hose Reel

CONSTRUCTION FEATURES

Power Lock Arms on All Slideout Rooms

WINDOWS, AWNINGS AND VENTS

Frameless, Double-Pane, Tinted Safety-Glass Windows
Fan-Tastic® Vent with Rain Sensor in Kitchen Area and Bathroom
Skylight in Bathroom*
Driver's-Side Power Window
Girard® Power Bedroom and Slideout Window Awnings
Two Girard® Integrated Power Box Side Awnings with Remote Controls
Girard® Power Front Entrance Door Awning
Slideout Awning Covers
Keyless Entry with Doorbell and Touch Pad
Cockpit Overhead Ventilation System

OPTIONAL FEATURES

AIR CONDITIONING AND HEATING

Electric Heat under Floor Tile in Kitchen, Bath and Living Areas*

APPLIANCES AND ACCESSORIES

GE® 30" Profile™ Advantium® Microwave Oven
Norcold® Freezer on Pullout Tray
One-Piece Washer/Dryer
Stackable Washer/240-Volt Dryer in Full-Length Cabinet*
Fisher & Paykel DishDrawer®**
All-Electric Unit with Frigidaire® Refrigerator and Four Extra Batteries*
Sony® 32" LCD TV in Front Overhead Cabinet with Navigation System Connection*
Remote-Controlled Rearview Color Camera
Secondary Multiple Touch Screen Control
External Entertainment Center with Sony® 26" LCD TV, AM/FM Radio and CD Player on Adjustable Swing Arm
KVH R-6 In-Motion Satellite without Receiver
Central Vacuum with Deluxe Tool Kit
Security System
CB Radio with Antenna

CABINETS AND FURNITURE

Ginger Glazed Cherry Hardwood Cabinets
Newport Cherry Hardwood Cabinets
Natural Cherry Hardwood Cabinets
Rattan Maple Glazed Hardwood Cabinets
Ginger Glazed Cherry Hardwood Cabinets with High-Gloss Finish
Ultraleather Sofa*
Ultraleather Hide-A-Bed Sofa with Air Mattress/Dinette Ensemble with Two Folding Chairs*
Two Leather/Vinyl Recliners*
Comfortaire Air Mattress for Main Bed

ELECTRICAL FEATURES

Roof-Mounted Spot Light
AGM Batteries

EXTERIOR FEATURES

Large Storage Tray with Access from Either Side
Power Sliding Storage Tray

INTERIOR FEATURES

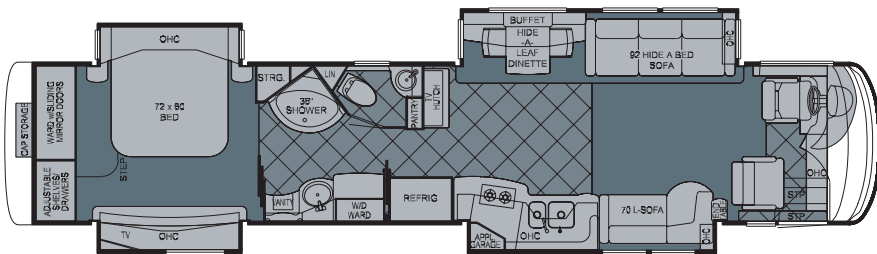
Polished Porcelain Floor Tile throughout Living Area
Power Duo Day/Night Window Shade System throughout Living Area

PLUMBING AND BATH FEATURES

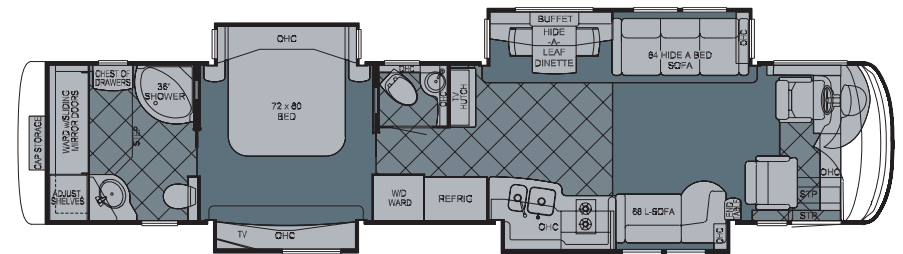
Assist Handle in Tub/Shower
Corian® Shower Walls with Ceramic Tile Inserts and Solid Surface Shower Pan

*CHECK WITH DEALERSHIP ON FLOORPLAN AVAILABILITY

ESSEX FLOORPLANS

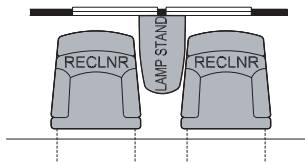


2009 Essex Diesel Pusher 4502

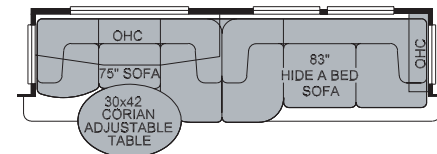


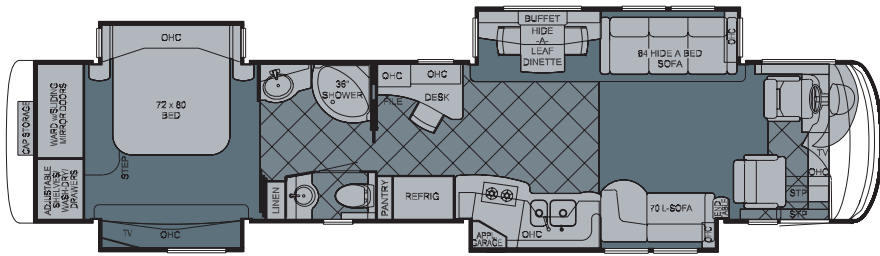
2009 Essex Diesel Pusher 4508

K242 Two Recliners
ILO Sofa: EXDP 4502, 4508,
4514, 4515, 4516, 4517

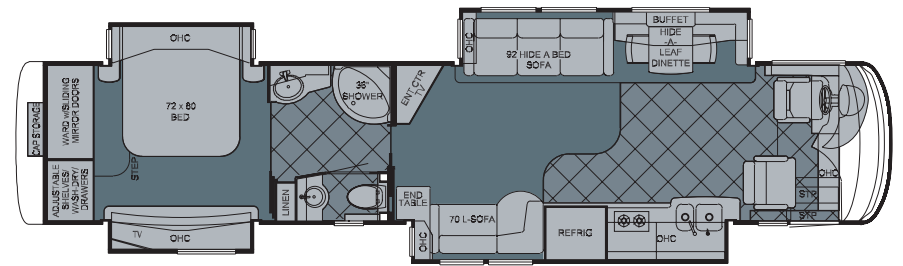


K331_EX1 Sofa/Dinette
Combination: EXDP 4508, 4514, 4517

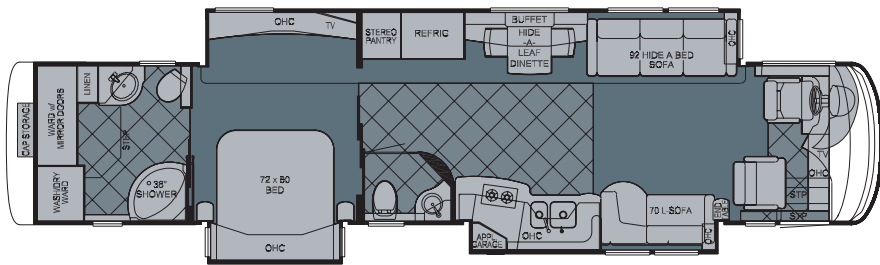




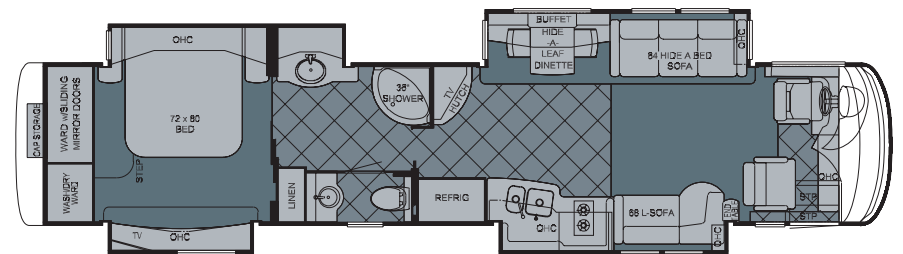
2009 Essex Diesel Pusher 4514



2009 Essex Diesel Pusher 4515

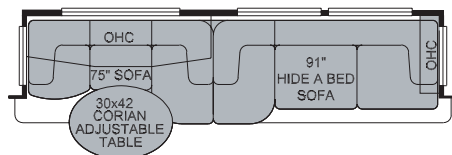


2009 Essex Diesel Pusher 4516

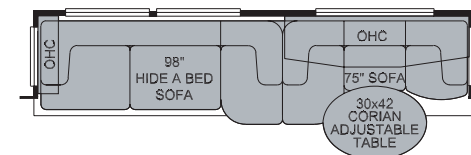


2009 Essex Diesel Pusher 4517

K331 Sofa/Dinette
Combination: EXDP 4502, 4516



K331_EX4 Sofa/Dinette
Combination: EXDP 4515



ESSEX CONSTRUCTION



The Spartan® K2 chassis has set the standard in the marketplace for its strength and power. It is equipped with a powerful Cummins® ISM 500 Hp engine, plus a brawny 16,600 lb. IFS (Independent Front Suspension). The K2 chassis allows you to pass other drivers on a steep incline with ease. And the K2 will allow you

to maneuver the motor coach like a pro. Handle tight turns with perfect precision. Nothing can get in your way when you are equipped with a Spartan® K2 under your coach. For peace of mind, there is a roadside assistance program for its entire warranty period.



Newmar Express Limited Warranty

Every Essex Diesel Pusher is backed by Newmar's two-year limited warranty/unlimited miles. Ask your Newmar dealer for details.

Limited Five-Year Structural Warranty

If any part of your Newmar recreational vehicle superstructure (which is the steel/aluminum structure of the sidewall, roof or frame) fails to perform properly within five years from the date of purchase because of faulty workmanship or material supplied by Newmar, it will be repaired without charge for either parts or labor by Newmar. This structural warranty is available only to the original purchaser and is non-transferable.



Roof R-Value = 16

- a. One-piece Molded Fiberglass Roof
- b. 9mm Wood Decking
- c. Fiberglass Batten Insulation
- d. A/C Ducting
- e. Aluminum Rafter Framing
- f. Kraft Paper Vapor Barrier
- g. 5/8" Bead Foam
- h. 3/16" Panel
- i. Padded Vinyl Overlay

Sidewall R-Value = 11

- j. 3/16" Plywood Interior Wall
- k. 5/8" Bead Foam
- l. Kraft Paper Vapor Barrier
- m. Fiberglass Batten Insulation
- n. 3/16" Plywood Exterior Wall
- o. Composite One-Piece Gelcoat Exterior Sidewall
- p. Aluminum Framing with 3 1/2" Header Above

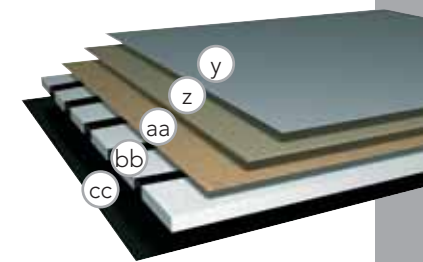
Floor R-Value = 16

- q. Carpet/Tile
- r. Carpet Padding
- s. 5/8" Floor Decking
- t. Fiberglass Batten Insulation
- u. 2"x 3" Wood Framing
- v. Polyethylene Moisture Barrier
- w. Foam Panels (Noise Protection)
- x. Aluminum Ducting

Basement R-Value = 4

- y. Cargo Liner
- z. 3/8" Floor Decking
- aa. 3/16" Luan Panel
- bb. 1 1/2" Bead Foam
- cc. Aluminum Sheeting with Steel Support Rails to Prevent Bowing and Flexing

1. 15M Penguin™ Heat Pump Central Air Conditioners (3)
2. One-Piece Bonded Windshield
3. Coated Aluminum Wheels
4. Frameless, Double-Pane, Tinted Safety-Glass Windows
5. Side-Hinged Baggage Doors with Optional Pullout Tray



FLOORPLAN SPECIFICATIONS

FLOORPLAN	APP. OVERALL LENGTH	WIDTH	APP. OVERALL HEIGHT	INTERIOR WIDTH	INTERIOR HEIGHT	GREY	SEWAGE	WATER	PROPANE	FURNACE
4502	44' 11"	101.5"	12' 10"	95.5"	84"	65 gal.	45 gal.	105 gal.	32 gal.	50,000 Btu
4508	44' 11"	101.5"	12' 10"	95.5"	84"	65 gal.	45 gal.	105 gal.	32 gal.	50,000 Btu
4514	44' 11"	101.5"	12' 10"	95.5"	84"	65 gal.	45 gal.	105 gal.	32 gal.	50,000 Btu
4515	44' 11"	101.5"	12' 10"	95.5"	84"	65 gal.	45 gal.	105 gal.	32 gal.	50,000 Btu
4516	44' 11"	101.5"	12' 10"	95.5"	84"	65 gal.	45 gal.	105 gal.	32 gal.	50,000 Btu
4517	44' 11"	101.5"	12' 10"	95.5"	84"	65 gal.	45 gal.	105 gal.	32 gal.	50,000 Btu

SPARTAN® CHASSIS

FLOORPLAN	ENGINE HP	AXLE RATIO	FUEL CAP.	WHEEL-BASE	FRONT GAWR*	REAR GAWR*	TAG GAWR*	GVWR*	GCWR*	APP. UVW	APP. NCC
4502	500	4.33	150 gal.	296"+TAG	16,600 lb.	20,000 lb.	10,000 lb.	46,600 lb.	61,600 lb.	40,450 lb.	6,150 lb.
4508	500	4.33	150 gal.	296"+TAG	16,600 lb.	20,000 lb.	10,000 lb.	46,600 lb.	61,600 lb.	40,550 lb.	6,050 lb.
4514	500	4.33	150 gal.	296"+TAG	16,600 lb.	20,000 lb.	10,000 lb.	46,600 lb.	61,600 lb.	40,200 lb.	6,400 lb.
4515	500	4.33	150 gal.	296"+TAG	16,600 lb.	20,000 lb.	10,000 lb.	46,600 lb.	61,600 lb.	40,220 lb.	6,380 lb.
4516	500	4.33	150 gal.	296"+TAG	16,600 lb.	20,000 lb.	10,000 lb.	46,600 lb.	61,600 lb.	40,550 lb.	6,050 lb.
4517	500	4.33	150 gal.	296"+TAG	16,600 lb.	20,000 lb.	10,000 lb.	46,600 lb.	61,600 lb.	40,200 lb.	6,400 lb.

Lengths, heights, widths and dry weights are approximate. Weight will vary based on optional equipment added to the above base weight.

GAWR: Gross Axle Weight Rating is the maximum permissible weight for an axle.

GVWR: Gross Vehicle Weight Rating is the maximum permissible weight for a fully loaded motor coach.

GCWR: Gross Combination Weight Rating is the value specified by the manufacturer of the vehicle as the maximum allowable loaded weight of this motor coach and any towed trailer or towed vehicle.

UVW: Unloaded Vehicle Weight is the weight of this motor coach as built at the factory with full fuel, engine oil and coolants. The UVW does not include cargo, fresh water, propane gas or dealer-installed accessories.

NCC: Net Carrying Capacity is the maximum weight of all occupants, including the driver, personal belongings, food, fresh water, waste water, propane gas, tools, tongue weight of towed vehicle, dealer-installed accessories, etc., that can be carried by the motor coach.

*Specifications supplied by the chassis manufacturer.



(Please affix dealer stamp in this area.)

There's more to the

2009 *Essex*

Visit www.newmarcorp.com

009



NEWMAR CORPORATION • 355 N DELAWARE ST • PO BOX 30 • NAPPANEE IN 46550-0030
574-773-7791 • Fax 574-773-2895 • www.newmarcorp.com