

Lance

AMERICA'S FAVORITE TRUCK CAMPER™ + NORTH AMERICA'S LARGEST CAMPER MANUFACTURER | SINCE 1965



www.LanceCamper.com

Lance 2009

Footnotes for specs	4	Lance 971	13
Lance 805	25	Lance 981	13
Lance 815	16-17	Lance 992	12
Lance 825	18-19	Lance 1040	20-21
Lance 830	20-21	Lance 1055	10-11
Lance 835	15	Lance 1181	8-9
Lance 845	22-23	Lance 1191	6-7
Lance 861	24		
Lance 915	14		

Camper power	31
Construction + LanceLock™	26-27
Dealer-installed equipment	34
Factory tours	31
Go anywhere	29
Legal disclaimer	29

Matching your truck + camper	4
Optional suspension equipment	32-33
Options	30-31
Popular options + accessories	5
Selected highlights + options	32-33
Standard features	28-29
The Lance Limited Warranty	33
Tow all your toys	35

Cool River (blue interior)	10-11, 12, 15, 18-19, 22-23
Day Dreamer (brown)	6-7
Nature's Envy (green)	8-9, 13, 20-21
SportsCamper™ option	14
Structure (ebony)	16-17, 24

Adventurer Brad Christ	10
Backcountry riders John + Peggy Wylie	16
Outdoorsman Scott Astorga	3
Outdoorsman Tony Chachere III	30
PRCA champion Bill Huber	8
Touring retirees Tom + Betty Wade	22

Memories. Tales told 'round the fire. Of people. Places. Things done. A summer's camping. Boating. Fishing the lakes. Those hunting trips. Backcountry horse rides. Four-wheeling the dunes. Winter's sports. Visiting friends in the country. Whatever your outdoor passions, a Lance camper can make memories that last lifetimes.



Lance 2009

Established in 1965, Lance is North America's largest truck camper manufacturer - with a staff of over 400 working within 141,000 square feet of custom-designed, state-of-the-art manufacturing and customer service facilities on a 22-acre campus in Southern California.



living the
Lance
life™

Outdoorsman
Scott
Astorga



Scott and neighbor son Tristan display some of their catches from the afternoon.

If you're looking for an RV – and trying to decide amongst towables, campers or motorized – here are some very practical reasons to own a truck camper: **Purchase price far less than a motorhome. Lower overall cost of ownership** (versus motorhome's registration, fuel, storage, tires, engine and transmission maintenance, insurance and depreciation). **No storage costs** when stored at home. **Tow all your toys** – boats, horses, cargo, motorcycles, snowmobiles, ATVs, etc. **Ease in getting around. Highly maneuverable. Go anywhere your truck goes. Not limited to RV sites. Better fuel economy. Less warranty and service issues. Easier to find techs and parts to work on a pickup truck than a motorhome chassis. Comfort behind the wheel. No need to get used to a new vehicle. No trouble backing-up. The most versatile RV. Like owning four different vehicles in one: a comfortable motorhome – a powerful tow vehicle – an all-season, all-terrain RV – a second car around town.**



With 44 years' experience specializing in truck camper design, engineering and construction – and earning the RV industry's reputation for best in owner satisfaction and camper quality – Lance has more than 100 Factory Authorized Dealerships across the USA and Canada ready to serve you. And you can visit us online at LanceCamper.com.



Lance Camper Manufacturing Corporation | 43120 Venture Street | Lancaster California 93535-4510 USA



matching your truck + camper

Truck manufacturers provide consumers with certain ratings to help determine the capacities of the truck, as manufactured. Some of those ratings are posted on the door jam, a label in the glove box, or in the owner's manual.

If you already own a truck that you intend to use for a camper, it's always wise to take it to a commercial truck scale to determine the actual weight of the truck. That information – along with your truck capacity information – will help determine the remaining capacities for carrying and/or towing.

Camper weights – both dry and wet – vary depending on what optional equipment you've installed and how full your holding tanks are. Also take into consideration the weight of gear, passengers and trailer tongue weight (if towing).

Truck and camper package handling can be greatly improved by adding support equipment like air springs ("air bags"), and special truck and cabover shocks – as outlined on page 34. Maintaining maximum tire pressure on quality tires with ratings equal to, or better than, your original tires is also important.

Because we're unfamiliar with your specific truck and how you intend to use it, Lance makes no warranties or representation – express or implied – as to the performance or reliability of your truck with a Lance camper.

For professional guidance, see your nearest Factory Authorized Lance Dealer. They're trained in properly calculating truck/camper packages.

truck + camper compatibility guide

The following are general guidelines to use when matching a Lance camper to your truck, and assumes standard equipment on both the truck and camper. Whether *any* camper can be used with your truck is dependent on your truck configuration (2WD vs. 4WD, standard cab vs. extended cab, etc.) – how much optional equipment is added to the camper – what you tow – and the weight of passengers and all other items you carry in your truck and camper. **Always consult with your Factory Authorized Lance Dealer.**

Compatible with domestic F-350/3500 Series (and larger) dually long bed trucks



Lance
1191 Lance
1181

Compatible with domestic heavy-duty F-250/2500 Series (and larger) single-rear-wheel long bed trucks



Lance
1055 Lance
1040 Lance
992 Lance
981 Lance
971 Lance
915 Lance
835 Lance
815 Lance
805

with long bed modifications

Compatible with domestic heavy-duty F-250/2500 Series (and larger) short bed trucks



Lance
861 Lance
845 Lance
830 Lance
825 Lance
815 Lance
805

with short bed modification skirts

Compatible with most domestic light-duty F-150/1500 Series (and larger) short bed trucks



Lance
825 Lance
815 Lance
805

with short bed modification skirts

The Lance 805 fits stepside trucks

Compatible with import full-size (Toyota® Tundra™/Nissan® Titan™) short or long bed trucks



Lance
825 Lance
805

SHORT BED ONLY

Though designed primarily for short beds, long beds can accommodate a Lance 805 with modifications available through your Factory Authorized Lance Dealer



FOOTNOTES FOR SPECS

Cabover interior headroom height measured from cabover floor (without mattress) to highest point in cabover ceiling. **Truck bed height** measured from camper's truck bed plate to roof (without air conditioning unit, satellite TV antenna or roof storage system) – including the seven inches for the top of roof ladder. **Overall exterior height** measured from camper's retracted legs to roof (without air conditioning unit, satellite TV antenna or roof storage system) – including the seven inches for the top of roof ladder. **Center of gravity** is the balance point of a base-weight camper (with fluids) loaded onto a truck – and is measured from the point of contact (the truck's tail lights) forward towards the truck's cab. **Dry weight** based upon standard base model features – not including options or dealer-installed items.



A

A Fold-down dinette in Fairway Papyrus upholstery (Option 122) **AA** How optional dinette deploys **B** Breathable Tyvek® Lance camper cover **C** Camper dolly **D** AM/FM/CD/DVD with 15-inch LCD HD TV and speakers (Option 341) **E** Portable propane-fired barbeque (Option 660) **F** Thule® storage pod (Option 645) **G** Onan® Camp Power™ 2500-watt AC propane-powered generator (Option 330) **H** Auto-locating satellite dish (Option 362) **I** Satellite dish with omni-directional TV antenna (Option 361) **J** Wireless backup camera with built-in mic and **K** in-cab LCD color video monitor (Option 528) **L** Side awning – rollout style (Option 610) – crankout style (Option 611) **M** Rear door rollout awning (Option 600) **N** Microwave oven (Option 310) **O** Slide-out pantry (Option 210) **P** 80-watt-output solar panel (Option 510) **Q** Portable exterior sink (Option 650) **R** Convection microwave oven (Option 305) **S** Roof rack system (Option 640)

popular options + accessories



AA



B



C



D



E



F



G



H



I



L



M



N



O



J



K



P



Q



R



S



Lance 1191

If you need the extra room for sleeping up to seven, the 11'6" Lance 1191 is a great family camper. With a dry bath, roadside slideout, side entry and rear fold-down tent (or rear trunk compartment), the 1191 is Lance's most spacious camper ever – with plenty of room in the cabover, dinette, rear tent and optional bunk beds. Everything you need for those fun-filled weekends with the family – with the capability of towing all your outdoor toys. And the side door allows easy in-and-out to and from your campsite.



REAR FOLD-DOWN TENT CONFIGURATION

BASEMENT MODEL

Interior floor length 11' 6"
 Interior height 6'8"
 Cabover interior headroom 44.5"*
 Truck bed height 101.75"*
 Exterior width 96"
 Overall exterior height 112.75"*
 Fresh water tank 35 gallons
 Grey water tank 35 gallons
 Black water tank 35 gallons

Propane 2 seven-gallon tanks
 Refrigerator 6 cubic feet – three-way power mode
 Furnace 20,000 BTUs
 Generator Optional
 Shower/toilet Dry
 Queen cabover + dinette beds Standard
 Fold-down bunk bed Optional

REAR FOLD-DOWN TENT CONFIGURATION

Exterior length 20'2"
 Center of gravity 40"*
 Dry weight 3695 pounds*

REAR TRUNK COMPARTMENT CONFIGURATION

Exterior length 20'2"
 Center of gravity 43"*
 Dry weight 3530 pounds*

✦ See footnotes for specs on page 4



REAR TRUNK CONFIGURATION

6





living the
Lance
life

Lance

PRCA champion

**Bill
Huber**

Lance 1181

BASEMENT MODEL

Interior floor length 11'6"
Interior height 6'8"
Cabover interior headroom 44.5"*
Truck bed height 101.75"*
Exterior width 96"
Overall exterior height 112.75"*
Fresh water tank 42 gallons
Grey water tank 30 gallons
Black water tank 35 gallons
Propane 2 seven-gallon tanks
Refrigerator 6 cubic feet -
three-way power mode
Furnace 20,000 BTUs
Generator Optional
Shower/toilet type Dry bath
Queen cabover + dinette beds
Standard
Fold-down bunk bed Optional
Exterior length 19'7"
Center of gravity 39"*
Dry weight 3650 pounds*



* See footnotes for specs on page 4

DOMESTIC F-350/3500+ SERIES DUALY LONG BED



Top-of-the-line. The 1181 is an 11'6" truck camper with a fabulously large dry bath, lots of drawers and counter space, a huge insulated skylight and mirrored wardrobe in the cabover bedroom - and a double-door refrigerator, dinette and wardrobe on a full-wall slideout. There's also an optional roll-out pantry in the galley. With the most floor space of all our models, it's our only unit with a full-width

basement storage for long items like skis, snowboards and fishing poles. Any item up to 91 inches.



PRCA Calf Roping Champion Bill Huber, wife Jackie, sons Justin and Cody (and several horses in-tow) have been living the Lance life for years - traveling over 250,000 miles to rodeos in their Lance.



Jackie

Justin

Cody

"If that's not a testimonial as to Lance's quality and durability, well then, I don't know what is," says Bill. "And it's very comfortable and convenient to travel in, too," adds Jackie. "We love our Lance!"



living the
Lance
life



Adventurer
**Brad
Christ**

Braving the challenging terrain of exotic locations in his '06 Lance 1191, Brad checks-in wherever he can find a Web connection. Here are a few shots from his recent expedition to South America. Log onto LanceCamper.com for more photos.



Lance 1191



Lance 1055

BASEMENT MODEL

Interior floor length 10'11"
Interior height 6'8"
Cabover interior headroom 44.5"*
Truck bed height 101.75"*
Exterior width 96"
Overall exterior height 112.75"*
Fresh water tank 30 gallons
Grey water tank 35 gallons
Black water tank 33 gallons
Propane 2 five-gallon tanks
Refrigerator 6 cubic feet -
three-way power mode
Furnace 20,000 BTUs
Generator Optional
Shower/toilet type Dry bath
Queen cabover + dinette beds
Standard
Drop-down overhead storage
Standard
Exterior length 19'0"
Center of gravity 50"*
Dry weight 3150 pounds*



* See footnotes for specs on page 4

DOMESTIC HEAVY-DUTY F-250/2500+ SERIES SINGLE-REAR-WHEEL LONG BED

Perfect for people that prefer a non-slideout camper with larger floorspace, the Lance 1055 is a 10'11" camper with an oversized dry bath. Also, a food bar and abundant counter space not found in today's campers - until now. The 1055's basement design offers increased storage and tank capacities - and features many upgrades for 2009. It's an ideal match for F-250/2500 Series (and larger) trucks.





Cool River interior

DOUBLE
Lance
992
SLIDEOUT

DOMESTIC HEAVY-DUTY F-250/2500+ SERIES SINGLE-REAR-WHEEL LONG BED

One's good. Two's great! The 992 – Lance's double-slideout – for heavier duty, single-rear-wheel or dually trucks. The dry weight: 3310 pounds. And the 992's holding tank numbers are impressive, too. 45 gallons fresh. 40 grey. 30 black. With a forward center of gravity for better on-road balance

and handling, the galley – on its roadside slideout – provides an exceptional amount of counter space and storage. Plus, the area of the 992's wet bath is bigger than our largest dry bath models.



BASEMENT MODEL

- Interior floor length 9'11"
- Interior height 6'8"
- Cabover interior headroom 44.5"*
- Truck bed height 101.75"*
- Exterior width 96"
- Overall exterior height 112.75"*
- Fresh water tank 45 gallons
- Grey water tank 40 gallons
- Black water tank 30 gallons
- Propane 2 five-gallon tanks
- Refrigerator 6 cubic feet – three-way power mode
- Furnace 20,000 BTUs
- Generator Optional
- Shower/toilet type Wet bath
- Queen cabover + dinette beds Standard
- Fold-down bunk bed Optional
- Exterior length 18'0"
- Center of gravity 52"*
- Dry weight 3310 pounds*



* See footnotes for specs on page 4



Cool River interior

Lance 981

The Lance 981 is a 9'11" basement-style camper with a large wet bath – and, next to the 992, is our most spacious nine-footer ever. It sports a roadside full-wall slideout with dinette and refrigerator. Large holding tanks and lots of sub-floor basement storage are key amenities. You'll enjoy ducted heat in the bathroom during your morning showers – and the mirrored wardrobe and huge insulated skylight (with ventilation screen and black-out shade) in the high-head-clearance cabover.



981/971 dinette bed conversion and deployed bunk bed



981 wet bath

Introducing the new Lance 971.

The largest dry bath in the industry for a nine-foot camper – coupled with the popular Lance 981 floorplan.

971 bathroom looking left



971 bathroom looking right

LANCE 981/LANCE 971 BOTH BASEMENT MODELS

- Interior floor length 9'11"
- Interior height 6'8"
- Cabover interior headroom 44.5"*
- Truck bed height 101.75"*
- Exterior width 96"
- Overall exterior height 112.75"*
- Fresh water tank 35 gallons
- Grey water tank 30 gallons
- Black water tank 30 gallons
- Propane 2 five-gallon tanks
- Refrigerator 6 cubic feet – three-way power mode
- Furnace 20,000 BTUs
- Generator Optional

- 981 shower/toilet type Wet bath
- 971 shower/toilet type Dry bath

- Queen cabover + dinette beds Standard
- Fold-down bunk bed Optional

- LANCE 981**
- Exterior length 18'0"
- Center of gravity 51"*
- Dry weight 3225 pounds*

- LANCE 971**
- Exterior length 18'0"
- Center of gravity 50"*
- Dry weight 3265 pounds*

* See footnotes for specs on page 4



981 interior in Nature's Envy

981



971



IDENTICAL FLOORPLANS EXCEPT:

981 Wet bath, and pantry and storage in galley

971 Dry bath and wall pantries in galley

971 galley with wall pantries inside the left wall



Lance 971

Lance 915

Modestly priced, the 9'6" wet bath Lance 915 is our most popular size of camper. This mid-sized model is ideal for most heavy-duty single-rear-wheel trucks where towing horse trailers, boats and other outdoor toys are a high priority. It includes

lots of storage along with a complete galley, large bath and generator capability – plus a removable counter for increased galley food prep and counter space. This 915 is equipped with SportsCamper™ options – which include unique upholstery and locking cabinet for guns and gear.



NON-BASEMENT MODEL

- Interior floor length 9'6"
- Interior height 6'10"
- Cabover interior headroom 36"
- Truck bed height 92.5"
- Exterior width 93"
- Overall exterior height 104.5"
- Fresh water tank 30 gallons
- Grey water tank 13 gallons
- Black water tank 19 gallons
- Propane 2 five-gallon tanks
- Refrigerator 5 cubic feet - three-way power mode
- Furnace 20,000 BTUs
- Generator Optional
- Shower/toilet type Wet bath
- Queen cabover + dinette beds
- Standard
- Drop-down overhead storage
- Standard
- Exterior length 17'6"
- Center of gravity 59"
- Dry weight 2505 pounds*



* See footnotes for specs on page 4



SportsCamper interior

Lance 835

The 835 is an 8'6" wet bath long bed camper that allows for greater towing capacity because you can tow right off your truck's existing factory hitch. And with no overhang, you can pull those heavy loads like boats,

horses, snowmobiles, personal watercraft, cargo trailers, ATVs, motorcycles, etc. – without a hitch box extension. The 835 can comfortably sleep five with a dinette that converts into a bed and an optional overhead bunk. Also available with SportsCamper options.



NON-BASEMENT MODEL

- Interior floor length 8'6"
- Interior height 6'8"
- Cabover interior headroom 34"*
- Truck bed height 90.5"*
- Exterior width 93"
- Overall exterior height 102.5"*
- Fresh water tank 30 gallons
- Grey water tank 8 gallons
- Black water tank 8 gallons
- Propane 2 five-gallon tanks
- Refrigerator 4 cubic feet – three-way power mode
- Furnace 18,000 BTUs
- Generator N/A
- Shower/toilet type Wet bath
- Queen cabover + dinette beds
 - Standard
- Drop-down overhead storage
 - Standard
- Exterior length 16'5"
- Center of gravity 68"*
- Dry weight 2160 pounds*

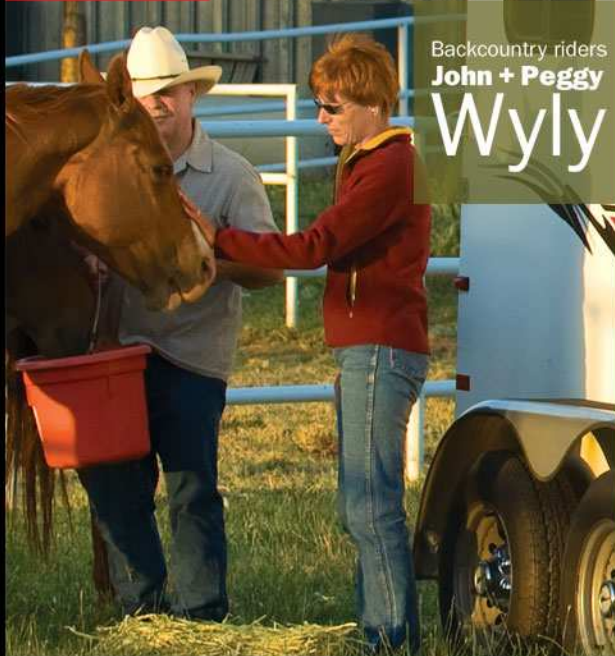


* See footnotes for specs on page 4



15

Cool River interior



Backcountry riders
John + Peggy
Wyly

Lance 815

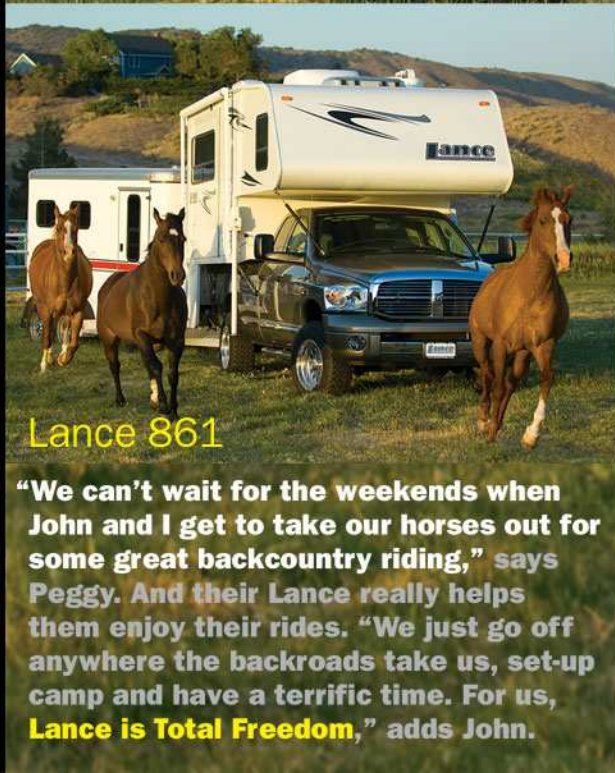
NON-BASEMENT MODEL

- Interior floor length 8'6"
- Interior height 6'6"
- Cabover interior headroom 32.5"*
- Truck bed height 89.25"*
- Exterior width 86"
- Overall exterior height 96.25"*
- Fresh water tank 18 gallons
- Grey water tank 11 gallons
- Black water tank 10 gallons
(shower waste drains into this tank -
the only Lance model that does this)
- Propane 1 five-gallon tank
- Refrigerator 3 cubic feet -
three-way power mode
- Furnace 18,000 BTUs
- Generator N/A
- Shower/toilet type Wet bath
- Queen cabover + dinette beds
Standard
- Drop-down overhead storage
Standard
- Exterior length 16'5"
- Center of gravity
67" long bed*/49" short bed*
- Dry weight 1878 pounds*



* See footnotes for specs on page 4

The Lance 815 for 2009 is a lightweight, narrow-body, 8'6" wet bath camper for single-rear-wheel long bed trucks, or short beds with the dealer-installed modification skirt option. Fully self-contained, the 815 comes complete with a queen-size bed, galley, dinette, shower, toilet, water heater, forced-air furnace - and lots of room. Perfect for lighter duty trucks, it's low, light and sleek. The 815 is available with SportsCamper™ options, too.



Lance 861

"We can't wait for the weekends when John and I get to take our horses out for some great backcountry riding," says Peggy. And their Lance really helps them enjoy their rides. "We just go off anywhere the backroads take us, set-up camp and have a terrific time. For us, **Lance is Total Freedom,**" adds John.



Lance 825

NON-BASEMENT MODEL

Interior floor length 8'6"
Interior height 6'6"
Cabover interior headroom 33"*
Truck bed height 82.25"*
Exterior width 86"
Overall exterior height 89.25"*
Fresh water tank 30 gallons

Shower with cassette toilet + water heater option (Option 571)

Grey water tank 14 gallons
Black water tank 4.5 gallons

Shower with marine toilet + water heater option (Option 577)

Grey water tank 14 gallons
Black water tank 14 gallons

Propane 1 five-gallon tank
Refrigerator 3 cubic feet - two-way power mode
Furnace 12,000 BTUs
Generator N/A

Shower/toilet Optional
Shower/toilet type Wet bath
Queen cabover + dinette beds Standard

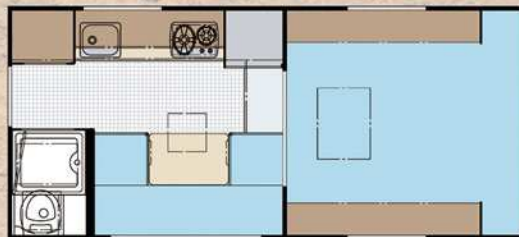
Fold-down bunk bed Optional
Exterior length 16'5"
Center of gravity 45"*
Dry weight 1620 pounds*

* See footnotes for specs on page 4

Floorplan shown with optional shower and toilet in bathroom space



- 1 Optional shower and toilet in bathroom space.
- 2 Exterior compartment is large enough to house an owner-supplied portable gasoline-powered generator.
- 3 Rear exterior lamps provide exceptional outdoor lighting.



The all-new Lance 825 is exactly what we've been asked by many to build: a high-quality, no-frills truck camper with everything needed to enjoy the outdoors at a modest price. Light enough to fit a short bed Toyota Tundra or Nissan Titan. It's available either without a bathroom, or with† – and a short list of options make it easy to customize your rig to precisely how you desire.



† The bathroom space in the Lance 825 comes standard without a shower and toilet – and basically serves as a large closet or storage area. If you want a shower and toilet, you have two choices available as options:

SHOWER WITH CASSETTE TOILET AND WATER HEATER OPTION (Lance option 571) – which includes:

- Six-gallon DSI (direct spark ignition) water heater
- Enclosed, heated (ducted from furnace) and insulated 14-gallon grey water holding tank
- 4.5-gallon-capacity black water tank internally within cassette toilet
- Systems monitor panel with holding tank and battery indicators

SHOWER WITH MARINE TOILET AND WATER HEATER OPTION (Lance option 577) – which includes:

- Six-gallon DSI (direct spark ignition) water heater
- Enclosed, heated (ducted from furnace) and insulated 14-gallon grey and 14-gallon black water holding tanks
- Systems monitor panel with holding tank and battery indicators

A water heater isn't standard – nor is available as a stand-alone option.





Cool River interior shown nicely equipped with options

Lance 830

Selected highlights Lance 830 + Lance 1040



- 1** Aerodynamic nose
- 2** Retractable side-mounted ladder
- 3** Rear fold-down tent option (see page 6 for exterior and interior photography)

BASEMENT MODEL

- Interior floor length 8'11"
- Interior height 6'6"
- Cabover interior headroom 41"*
- Truck bed height 95.5"*
- Exterior width 96"
- Overall exterior height 109.75"*
- Shower + water heater Standard
- Fresh water tank 30 gallons
- Grey water tank 17 gallons
- Black water tank 14 gallons



thermopane windows

Full-opening, tinted acrylic thermopane Euro windows with integrated screens and pull-shades



electric double entry step option

- Cassette toilet option (Option 570)
- Black water tank 4.5 gallons

- Propane 1 five-gallon tank
- Refrigerator 4 cubic feet - three-way power mode
- Furnace 20,000 BTUs
- Generator N/A

generator space



Extra-large capacity exterior storage compartment lined with a vacuum-formed housing - large enough to stow an owner-supplied portable gasoline-powered generator

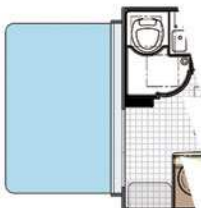
- Shower/toilet type Wet bath
- Queen cabover + dinette beds Standard
- Fold-down bunk bed N/A
- Rear fold-down tent + bed Optional
- Exterior length 16'9"
- Center of gravity 43"*
- Dry weight 2240 pounds*

additional sleeping accommodations

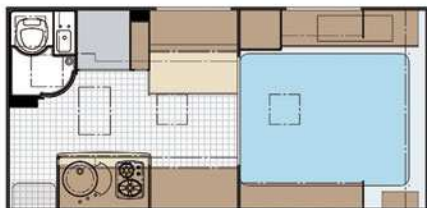


Additional sleeping accommodations - dinette table conversion (table detaches from track)

Rear fold-down tent option



Basic floorplan



✦ See footnotes for specs on page 4



The all-new Lance 830 and Lance 1040 each have a fresh, contemporary look-and-feel with spacious floorplans available in two configurations. Their clean, smart interiors feature a

Lance 1040

The new Lance 1040 is a lengthened version of the Lance 830 – with additional wardrobe and counter space – designed for long bed trucks



Lance 830 with Nature's Envy interior

distinctive Euro-style design accented by angled wood cabinetry and bulkhead walls – cavernous, easy-access overhead galley bins – lots of interior storage – drawers behind Euro-styled doors – a sliding/detachable dinette table – an expansive galley with deep-basin circular sink – and a neo-round corner shower with a curved, sliding bathroom door. Fabulous!



Lance 1040 galley



Lance 1040 interior



The neo-round corner shower in the Lance 830 and Lance 1040

BASEMENT MODEL

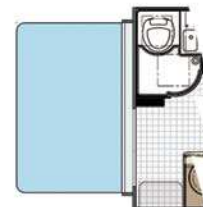
Interior floor length 10'6"
Interior height 6'6"
Cabover interior headroom 41"*
Truck bed height 95.5"*
Exterior width 96"
Overall exterior height 109.75"*
Shower + water heater Standard
Fresh water tank 30 gallons
Grey water tank 17 gallons
Black water tank 14 gallons

Cassette toilet option (Option 570)

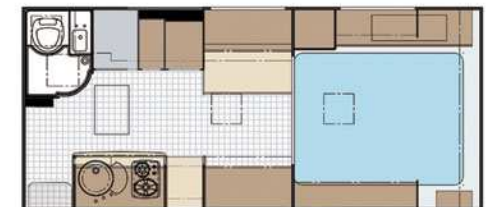
Black water tank 4.5 gallons
Propane 1 five-gallon tank
Refrigerator 5 cubic feet – double-door three-way power mode
Furnace 20,000 BTUs
Generator N/A
Shower/toilet type Wet bath
Queen cabover + dinette beds Standard
Fold-down bunk bed N/A
Rear fold-down tent + bed Optional
Exterior length 18'3"
Center of gravity 42"*
Dry weight 2420 pounds*

✦ See footnotes for specs on page 4

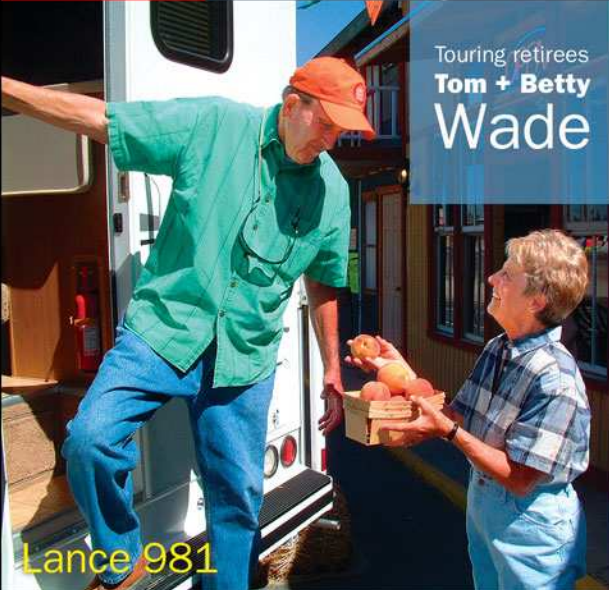
Rear fold-down tent option



Basic floorplan



living the
Lance
life



Touring retirees
Tom + Betty
Wade

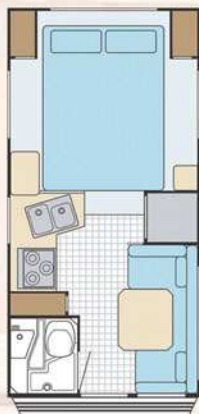
Lance 845

NON-BASEMENT MODEL

Interior floor length 8'6"
Interior height 6'8"
Cabover interior headroom 34"*
Truck bed height 90.5"*
Exterior width 93"
Overall exterior height 102.5"*
Fresh water tank 30 gallons
Grey water tank 13 gallons
Black water tank 19 gallons
Propane 2 five-gallon tanks
Refrigerator 4 cubic feet -
three-way power mode
Furnace 18,000 BTUs
Generator Optional
Shower/toilet type Wet bath
Queen cabover + dinette beds
Standard
Drop-down overhead storage
Standard

EXTENDED CABOVER ONLY

Exterior length 16'5"
Center of gravity 47"*
Dry weight 2412 pounds*



* See footnotes for specs on page 4

DOMESTIC HEAVY-DUTY F-250/2500+ SERIES SHORT BED

One of our most popular models, the Lance 845 is an 8'6" wet bath short bed camper with generator capability. With a built-on bumper and step for easy access into the coach, the 845 is a short bed truck owner's dream. The extended cabover with queen-size bed is standard and the cabover's front cabinets provide extra storage. This camper also has larger capacity holding tanks and is available with Sports-Camper™ options.



After Tom's career in transportation for Sears, and Betty's as owner of a local Baskin-Robbins ice cream store, they now have the time to relax and enjoy life – sightseeing and shopping around the U.S. and Canada in their Lance.



"We love the maneuverability. We had a travel trailer. But a Lance really fits our lifestyle so much better now," says Tom. "One of the best things is we can park it in a regular car space!" laughs Betty.



Lance 861

The Lance 861 is a spacious 8'8" camper designed for heavy-duty short bed trucks – and provides the most floor space on a short bed truck. It features our popular wet bath and curbside slideout dinette. The 861's basement design allows

for oversized holding tanks and an optional built-in generator to sustain those nice, long camping weekends. The cabover bed area features a generous wardrobe/closet – with excellent headroom as well.



Watertight toiletries compartment

BASEMENT MODEL

- Interior floor length 8'8"
- Interior height 6'8"
- Cabover interior headroom 44.5"*
- Truck bed height 101.75"*
- Exterior width 96"
- Overall exterior height 112.75"*
- Fresh water tank 30 gallons
- Grey water tank 30 gallons
- Black water tank 33 gallons
- Propane 2 five-gallon tanks
- Refrigerator 6 cubic feet – three-way power mode
- Furnace 20,000 BTUs
- Generator Optional
- Shower/toilet type Wet bath
- Queen cabover + dinette beds Standard
- Fold-down bunk bed Optional

EXTENDED CABOVER ONLY

- Exterior length 16'9"
- Center of gravity 43"*
- Dry weight 3070 pounds*



* See footnotes for specs on page 4



Structure interior

Lance 805

The Lance 805 is a narrow-body, 8'0" non-self-contained camper designed for domestic F-150s and 1500s – and import trucks with a minimum width of

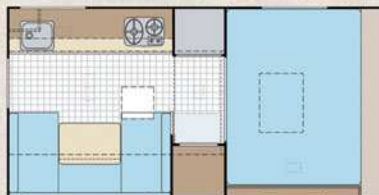
48 inches between wheel wells. The 805 is our most compact and lightest camper, with a clean and simple floorplan. And with a light weight and light price, this rig is perfect for those quick, getaway weekends. Designed primarily for short bed trucks, the 805 will fit long beds with modifications through your Lance dealer.

NON-BASEMENT MODEL

- Interior floor length 8'0"
- Interior height 6'6"
- Cabover interior headroom 33"*
- Truck bed height 82.25"*
- Exterior width 86"
- Overall exterior height 89.25"*
- Fresh water tank 16 gallons
- Grey water tank N/A
- Black water tank N/A
- Propane 1 five-gallon tank
- Refrigerator 3 cubic feet – two-way power mode
- Furnace 12,000 BTUs
- Generator N/A
- Shower/toilet N/A
- Queen cabover + dinette beds Standard
- Fold-down bunk bed Optional

NON-EXTENDED CABOVER ONLY

- Exterior length 14'0"
- Center of gravity 69" long bed*/51" short bed*
- Dry weight 1377 pounds*



IMPORT FULL-SIZE (TOYOTA TUNDRA/NISSAN TITAN) SHORT OR LONG BED WITH LONG BED MODIFICATIONS

DOMESTIC LIGHT-DUTY F-150/1500+ SERIES SHORT BED

DOMESTIC HEAVY-DUTY F-250/2500+ SERIES SHORT BED

DOMESTIC HEAVY-DUTY F-250/2500+ SERIES SINGLE-REAR-WHEEL LONG BED WITH LONG BED MODIFICATIONS



The 805 is uniquely equipped for economy and light weight





BETTER-BUILT TRUCK CAMPERS SIMPLY BECAUSE THEY HAVE TO BE



For 44 years, Lance has been producing some of the highest quality RVs available. If we don't build the best campers for our customers, we're out of business. It's just that simple.

LanceLock™

LANCE-PROPRIETARY STRUCTURAL ASSEMBLY PROCESS FOR SLIDEOUT + BASEMENT MODELS

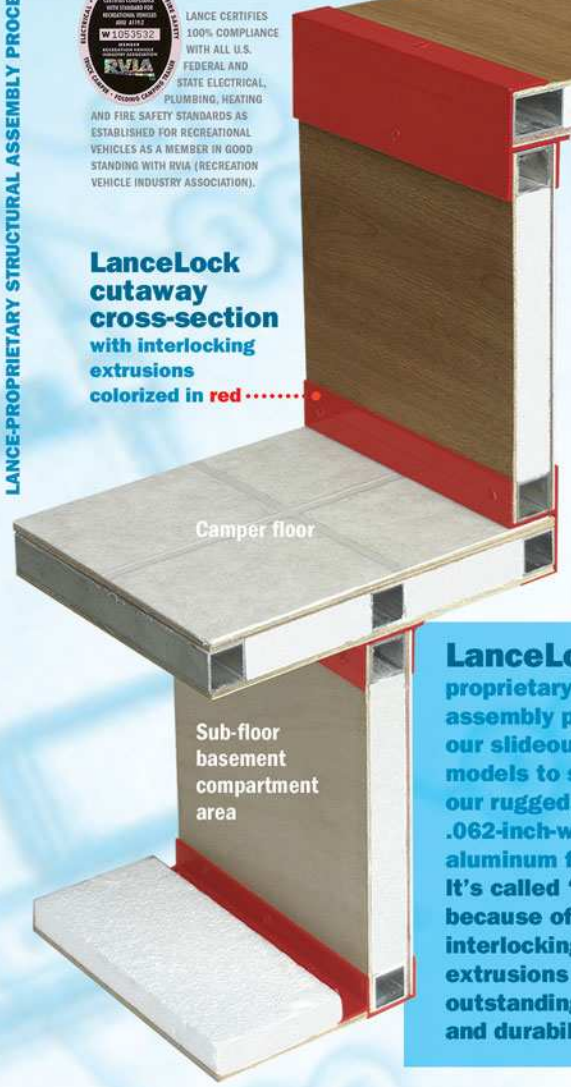


Camper sidewall



LANCE CERTIFIES 100% COMPLIANCE WITH ALL U.S. FEDERAL AND STATE ELECTRICAL, PLUMBING, HEATING AND FIRE SAFETY STANDARDS AS ESTABLISHED FOR RECREATIONAL VEHICLES AS A MEMBER IN GOOD STANDING WITH RVIA (RECREATION VEHICLE INDUSTRY ASSOCIATION).

LanceLock cutaway cross-section with interlocking extrusions colorized in red.....



LanceLock is our proprietary structural assembly process used in our slideout and basement models to solidly integrate our rugged, aircraft-grade, .062-inch-wall-thickness aluminum frameworks. It's called "LanceLock" because of the special interlocking aluminum extrusions - that deliver outstanding strength and durability.

ENGINEERING FACT

The LanceLock extrusions ensure a precise fit of all structural components. It requires far less fasteners and ELIMINATES THE NEED FOR WOOD STICKS that most other truck camper manufacturers have to put inside their thinner aluminum tubing to have something "solid" to sink screws into for framing.



Lock valuables behind a secure entry door with the long-item storage tray in basement models

Durable, mar-resistant interior paneling

Molded one-piece countertops in basement models

full-walk-on EnergyStar TPO roof

An incredibly tough, seamless, marine-grade thermoplastic polyolefin one-piece roof



Fully laminated walls, floor, ceiling and cabover bed floor for years of dependability

200-pound capacity youth bunks with child-restraint netting

Automatic, dual-speed, 15,000/22,000-BTU furnace option in basement models

Ducted heat

Generous showers (6-foot, 250-pound man shown)

precision-fitted **SOLID block foam insulation** throughout

Cold outside?...It's warm everywhere inside the camper's living area with **ducted heat**. Additionally, we duct heat to the bath, holding tanks and cabover bed area in most models

Lance aluminum tubing is **Alodine[®]-coated** - a chemical treatment process that greatly enhances adhesion for lamination bonding, and provides superior corrosion protection to the metal.

.062" Alodine-coated aluminum tubing

Frames are welded within a **precision jig system** to ensure true-to-square, tight-tolerance assemblies.

custom interlocking aluminum extrusions

Lance's **double-seal process** tightly seals joints for added weather-proof protection

Superior corrosion protection with premium stainless steel and coated Everlube[®] fasteners

Electrical wiring is protected with tubing grommets inside the aluminum framing

The ultimate in stability and safety - interconnecting steel corner mounting plates both outside and inside solidly anchor front jacks to the camper structure

No water intrusion with sealed tail lights

Rear jacks attached to bumper

Tinted windows reduce glare and reject the sun's harmful rays

Heavy-duty **Phat[™]** ladder with stronger and larger diameter tubing

Prewiring for most electrical options allows easier installations of additional equipment later

Much easier entry into a camper with Lance's "well step" step-up-entry design

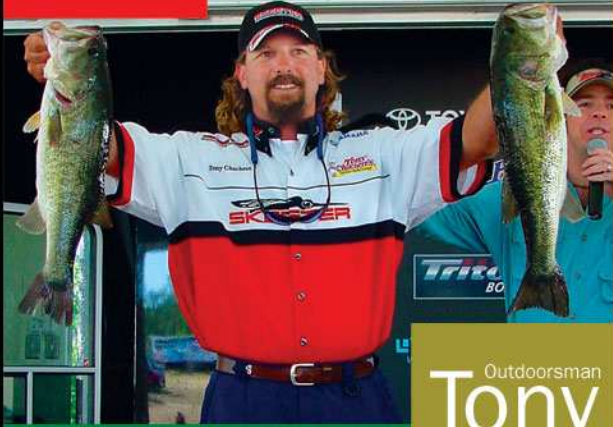
Powder-coated, non-rust aluminum bumper

Non-rust, stainless steel tie-down brackets with no paint to chip off

EXTERIOR	Non-basement models					Basement models									
	805	815	825	835	845	915	830	861	971	981	992	1040	1055	1181	1191
1 Laminated exterior fiberglass walls with exterior graphics	•	•	•	•	•	•	•	•	•	•	•	•	•	•	•
2 Molded aluminum drip rails ("monsoon rails") with down spouts	•	•	•	•	•	•	•	•	•	•	•	•	•	•	•
3 Manual acme screw camper jacks - new longer length	•	•	•	•	•	•	•	•	•	•	•	•	•	•	•
4 Manual ball screw camper jacks	•	•	•	•	•	•	•	•	•	•	•	•	•	•	•
5 Electric ball screw camper jacks with wireless remote	•	•	•	•	•	•	•	•	•	•	•	•	•	•	•
6 Swing-out jack brackets (for use with dually trucks)	•	•	•	•	•	•	•	•	•	•	•	•	•	•	•
7 Aluminum rear bumper with slide-out storage tray	•	•	•	•	•	•	•	•	•	•	•	•	•	•	•
8 Roto-molded rear bumper	•	•	•	•	•	•	•	•	•	•	•	•	•	•	•
9 Foldover step	•	•	•	•	•	•	•	•	•	•	•	•	•	•	•
10 Double step	•	•	•	•	•	•	•	•	•	•	•	•	•	•	•
11 Large radius tinted safety glass windows	•	•	•	•	•	•	•	•	•	•	•	•	•	•	•
12 Full-opening, tinted acrylic thermopane Euro windows with integrated screens and pull-shades	•	•	•	•	•	•	•	•	•	•	•	•	•	•	•
13 Removable pass-through window	•	•	•	•	•	•	•	•	•	•	•	•	•	•	•
14 Anodized Maggie Rack™	•	•	•	•	•	•	•	•	•	•	•	•	•	•	•
15 Heavy-duty, large-diameter-tube, anodized Phat™ ladder	•	•	•	•	•	•	•	•	•	•	•	•	•	•	•
16 Retractable side-mounted ladder	•	•	•	•	•	•	•	•	•	•	•	•	•	•	•
17 Sealed, waterproof tail lights with incandescent lamps	•	•	•	•	•	•	•	•	•	•	•	•	•	•	•
18 Sealed, waterproof backup lights with incandescent lamps	•	•	•	•	•	•	•	•	•	•	•	•	•	•	•
19 Tail lights with backup	•	•	•	•	•	•	•	•	•	•	•	•	•	•	•
20 License plate holder and light	•	•	•	•	•	•	•	•	•	•	•	•	•	•	•
21 Patio light with interior switch	•	•	•	•	•	•	•	•	•	•	•	•	•	•	•
22 Egress window in cabover	•	•	•	•	•	•	•	•	•	•	•	•	•	•	•
23 Roof vent in cabover	•	•	•	•	•	•	•	•	•	•	•	•	•	•	•
24 Heki® skylight vent in cabover with screen and blind	•	•	•	•	•	•	•	•	•	•	•	•	•	•	•
25 Dual-pane skylight over galley	•	•	•	•	•	•	•	•	•	•	•	•	•	•	•
26 Heavy-duty stainless steel tie-downs bolted through frame	•	•	•	•	•	•	•	•	•	•	•	•	•	•	•
CONSTRUCTION + INSULATION															
27 One-piece, full-walk-on TPO (thermoplastic polyolefin) roof	•	•	•	•	•	•	•	•	•	•	•	•	•	•	•
28 Laminated and insulated floor, lower body, cabover bed and roof	•	•	•	•	•	•	•	•	•	•	•	•	•	•	•
29 Solid block foam insulation throughout (Lance doesn't use fiberglass battling for insulation)	•	•	•	•	•	•	•	•	•	•	•	•	•	•	•
30 .062-inch-tube-wall-thickness, Alodine®-coated aluminum-framed walls with superior-strength LanceLock™ structure	•	•	•	•	•	•	•	•	•	•	•	•	•	•	•
31 .062-inch-tube-wall-thickness, Alodine®-coated aluminum-framed floor, cabover bed floor and ceiling with superior-strength LanceLock™ structure	•	•	•	•	•	•	•	•	•	•	•	•	•	•	•
INTERIOR + DECOR															
32 Hardwood-framed flat panel cabinet doors	•	•	•	•	•	•	•	•	•	•	•	•	•	•	•
33 Hardwood raised-panel overhead cabinet doors	•	•	•	•	•	•	•	•	•	•	•	•	•	•	•
34 Fingertip-positive-catch cabinet hardware	•	•	•	•	•	•	•	•	•	•	•	•	•	•	•
35 Euro-style push-to-latch cabinet hardware	•	•	•	•	•	•	•	•	•	•	•	•	•	•	•
36 Radius-cornered overhead cabinets	•	•	•	•	•	•	•	•	•	•	•	•	•	•	•
37 Cabover access step	•	•	•	•	•	•	•	•	•	•	•	•	•	•	•
38 Color-coordinated valances with lambrequins	•	•	•	•	•	•	•	•	•	•	•	•	•	•	•
39 Integrated screens and pull-shades on full-opening thermopane Euro windows	•	•	•	•	•	•	•	•	•	•	•	•	•	•	•
40 Mini-blinds in galley	•	•	•	•	•	•	•	•	•	•	•	•	•	•	•
41 Mini-blinds in cabover	•	•	•	•	•	•	•	•	•	•	•	•	•	•	•
42 Day/night shades with black-out shades on cabover windows	•	•	•	•	•	•	•	•	•	•	•	•	•	•	•
43 Mini-blinds in dinette	•	•	•	•	•	•	•	•	•	•	•	•	•	•	•
44 Day/night shades in dinette	•	•	•	•	•	•	•	•	•	•	•	•	•	•	•
45 Carpeted cabover bed floor	•	•	•	•	•	•	•	•	•	•	•	•	•	•	•
46 Commercial-grade vinyl flooring	•	•	•	•	•	•	•	•	•	•	•	•	•	•	•
47 All-wood cabinet drawers with full-extension metal guides	•	•	•	•	•	•	•	•	•	•	•	•	•	•	•
GALLEY APPLIANCES + EQUIPMENT															
48 Two-burner range	•	•	•	•	•	•	•	•	•	•	•	•	•	•	•
49 Three-burner high-output range with 16-inch oven and cover	•	•	•	•	•	•	•	•	•	•	•	•	•	•	•
50 Three-burner high-output range with 21-inch oven and cover	•	•	•	•	•	•	•	•	•	•	•	•	•	•	•
51 Range hood with light and fan	•	•	•	•	•	•	•	•	•	•	•	•	•	•	•
52 Molded galley top with double sink and cover	•	•	•	•	•	•	•	•	•	•	•	•	•	•	•
53 Single basin sink	•	•	•	•	•	•	•	•	•	•	•	•	•	•	•
54 Double basin sink	•	•	•	•	•	•	•	•	•	•	•	•	•	•	•
55 Pantry with adjustable shelves	•	•	•	•	•	•	•	•	•	•	•	•	•	•	•
56 High-spout galley faucet	•	•	•	•	•	•	•	•	•	•	•	•	•	•	•
57 Silverware organizer	•	•	•	•	•	•	•	•	•	•	•	•	•	•	•
58 Automatic propane tank changeover regulator	•	•	•	•	•	•	•	•	•	•	•	•	•	•	•
FRESH + WASTE WATER SYSTEMS															
59 Water pump with inline filter	•	•	•	•	•	•	•	•	•	•	•	•	•	•	•
60 Lightweight, insulated six-gallon DSI (direct spark ignition) water heater	•	•	•	•	•	•	•	•	•	•	•	•	•	•	•
61 Enclosed, furnace-ducted and heated holding tanks with reflective insulation (Lance doesn't use fiberglass battling for insulation)	•	•	•	•	•	•	•	•	•	•	•	•	•	•	•
62 Brass fittings on all water lines	•	•	•	•	•	•	•	•	•	•	•	•	•	•	•
BATHROOM															
63 Medicine cabinet with mirror door	•	•	•	•	•	•	•	•	•	•	•	•	•	•	•
64 Storage cabinet	•	•	•	•	•	•	•	•	•	•	•	•	•	•	•
65 Bath mirror	•	•	•	•	•	•	•	•	•	•	•	•	•	•	•
66 Full-length mirror with door-mounted towel rack	•	•	•	•	•	•	•	•	•	•	•	•	•	•	•

2009 Lance standard features

living the
Lance
life



Outdoorsman
Tony
Chachere

“ I’m a third-generation outdoorsman and the grandson of legendary Louisiana Hall of Fame chef Tony Chachere. I enjoy our great outdoors many ways: hunting, fishing, cooking and camping. A true outdoorsperson knows that outdoor excursions can take many a twist and turn. I truly believe that Lance truck campers are the most versatile RVs on the market today...period! And here’s a picture of my wrapped Lance rig!”



Tony's Lance is wrapped with graphics promoting Catch-A-Dream Foundation - which fulfills the outdoor wishes of children aged 18 and younger who suffer from life-threatening illnesses. The uniqueness of Catch-A-Dream is that it not only allows a child to experience an outdoor adventure, but the entire family is there to share in the experience with the child, accompanied by a mentor from Catch-A-Dream.

	Non-basement models				Basement models										
	805	815	825	835	845	915	830	861	971	981	992	1040	1055	1181	1191
THE LANCE LOOK® INTERIOR DESIGN OPTIONS															
011	•	•	•	•	•	•	•	•	•	•	•	•	•	•	•
012	•	•	•	•	•	•	•	•	•	•	•	•	•	•	•
013	•	•	•	•	•	•	•	•	•	•	•	•	•	•	•
014	•	•	•	•	•	•	•	•	•	•	•	•	•	•	•
INTERIOR DECOR + EXTERIOR GRAPHICS OPTIONS															
020	•	•	•	•	•	•	•	•	•	•	•	•	•	•	•
021	•	•	•	•	•	•	•	•	•	•	•	•	•	•	•
086	•	•	•	•	•	•	•	•	•	•	•	•	•	•	•
INTERIOR OPTIONS															
102	•	•	•	•	•	•	•	•	•	•	•	•	•	•	•
105	•	•	•	•	•	•	•	•	•	•	•	•	•	•	•
109	•	•	•	•	•	•	•	•	•	•	•	•	•	•	•
110	•	•	•	•	•	•	•	•	•	•	•	•	•	•	•
111	•	•	•	•	•	•	•	•	•	•	•	•	•	•	•
112	•	•	•	•	•	•	•	•	•	•	•	•	•	•	•
115	•	•	•	•	•	•	•	•	•	•	•	•	•	•	•
120	•	•	•	•	•	•	•	•	•	•	•	•	•	•	•
122	•	•	•	•	•	•	•	•	•	•	•	•	•	•	•
125	•	•	•	•	•	•	•	•	•	•	•	•	•	•	•
126	•	•	•	•	•	•	•	•	•	•	•	•	•	•	•
130	•	•	•	•	•	•	•	•	•	•	•	•	•	•	•
131	•	•	•	•	•	•	•	•	•	•	•	•	•	•	•
132	•	•	•	•	•	•	•	•	•	•	•	•	•	•	•
150	•	•	•	•	•	•	•	•	•	•	•	•	•	•	•
CONVENIENCE OPTIONS															
200	•	•	•	•	•	•	•	•	•	•	•	•	•	•	•
210	•	•	•	•	•	•	•	•	•	•	•	•	•	•	•
215	•	•	•	•	•	•	•	•	•	•	•	•	•	•	•
220	•	•	•	•	•	•	•	•	•	•	•	•	•	•	•
225	•	•	•	•	•	•	•	•	•	•	•	•	•	•	•
226	•	•	•	•	•	•	•	•	•	•	•	•	•	•	•
230	•	•	•	•	•	•	•	•	•	•	•	•	•	•	•
APPLIANCE + ELECTRONICS OPTIONS															
300	•	•	•	•	•	•	•	•	•	•	•	•	•	•	•
305	•	•	•	•	•	•	•	•	•	•	•	•	•	•	•
310	•	•	•	•	•	•	•	•	•	•	•	•	•	•	•
321	•	•	•	•	•	•	•	•	•	•	•	•	•	•	•
330	•	•	•	•	•	•	•	•	•	•	•	•	•	•	•
340	•	•	•	•	•	•	•	•	•	•	•	•	•	•	•
340	•	•	•	•	•	•	•	•	•	•	•	•	•	•	•
341	•	•	•	•	•	•	•	•	•	•	•	•	•	•	•
341	•	•	•	•	•	•	•	•	•	•	•	•	•	•	•
344	•	•	•	•	•	•	•	•	•	•	•	•	•	•	•
350	•	•	•	•	•	•	•	•	•	•	•	•	•	•	•
361	•	•	•	•	•	•	•	•	•	•	•	•	•	•	•
362	•	•	•	•	•	•	•	•	•	•	•	•	•	•	•
370	•	•	•	•	•	•	•	•	•	•	•	•	•	•	•
380	•	•	•	•	•	•	•	•	•	•	•	•	•	•	•
386	•	•	•	•	•	•	•	•	•	•	•	•	•	•	•
393	•	•	•	•	•	•	•	•	•	•	•	•	•	•	•

2009 Lance options

selected highlights + options

- 1** Exterior propane outlet
- 2** Battery tray pullout
- 3** Propane tank pullout
- 4** Rollout drawers
- 5** Fan-Tastic® exhaust roof vent
- 6** Long-item storage
- 7** Exterior storage
- 8** Rear step versatility
- 9** Twin beds
- 10** Lance cargo net (for models with fold-down storage)
- 11** Lance child-restraint system with bunk pads
- 12** Mirrored wardrobe
- 13** Dinette bunks
- 14** Remoted-controlled electric camper jacks
- 15** Wet bath (whole bathroom gets wet)
- 16** Dry bath (shower area separate from lavatory area)
- 17** Shower tub
- 18** Lance removable carpet kit
- 19** Swing-out jack brackets for dual-



Long-item storage available on basement models (except Lance 830)



12



Stowed (slideout model example)



Deployed (slideout model example)

13



14



15



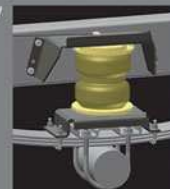
16



17

optional suspension equipment

Air Lift® Super Duty air springs (“air bags”) are specially designed pneumatic chambers mounted above your truck’s leaf or coil spring suspensions – which level your truck/camper rig by transferring the rear axle load forward, stabilizing your ride – and are adjustable with an optional in-cab control panel. And within Air Lift’s Super Duty air springs are the Lance-exclusive internal jounce bumpers – eliminating bottom-out.



Roadmaster® anti-sway bars use the weight of your truck’s axle as a brace against its chassis. As you turn, the pressure-shift to one side of the vehicle is countered by the bar – so, you stay level. In most cases, 12 bolts are all that’s needed to install this solution that can dramatically improve overall handling – stabilize your rig in crosswinds – and virtually eliminate side-to-side rolling (especially during cornering).



rear-wheeled trucks **20** Short bed modification skirts **21** Pass-through storage and centralized utility bay **22** Lance Bed-Maid™ – a durable, easy-care, dual-layer sleep system complete with pillowcases and fitted sheets that Velcro® into place – sized to your Lance’s mattress – that makes making a bed in a camper really easy!

Lance provides a limited warranty to the original owner (purchaser) of a new 2009 Lance camper to be free of defects in materials, workmanship and structural integrity (under normal use with reasonable care and routine prescribed maintenance) for a period of one year from the date of purchase – subject to exclusions for vendor-made parts and components.



The Lance Limited Warranty



7



8
CENTER POSITION
Step is centered underneath entry door



9
TOWING POSITION
Step shifts to right – allowing for tow hitch and easy entry



9

10



11



18



19



20



21



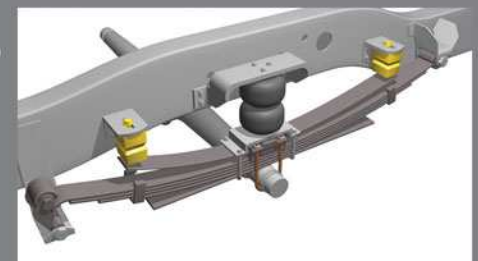
22



SuperSprings® are self-adjusting suspension stabilizers mounted above your truck’s leaf springs to enhance load-carrying capacity, handling and towing through a patented roller-shackle assembly. This means they work on an as-needed basis – automatically – with no rattle or noise. On most applications, SuperSprings can be used with or **SuperSprings®** without air bags.



SuperSprings® SuperSway-Stops™ compliment your existing air spring (“air bag”) performance by further absorbing road shock impacts through micro-cellular polyurethane foam dampeners that deliver soft, progressive compression and spring-rates – all in a quick, simple, bolt-on installation.



Lance
FACTORY TRAINED
SERVICE

dealer-installed
equipment

Installation of these support equipment systems by your Factory Authorized Lance Dealer is highly recommended to ensure you receive **The Ultimate Ride**. Experience a dramatic improvement in the drivability and handling of your truck and camper package – in any weather, on any road.



ASA's rear-view camera/monitor maximizes safety

2

When not towing loads that require an extended hitch, included in Reese's Tow Beast system is a reducer sleeve, which you use to reconnect the hitch ball and draw bar to the receiver hitch.



RESE
CERTIFIED

The 48-inch Reese Tow Beast hitch box extension ("tow bar") is constructed with a heavy steel tube inside another steel tube - welded together - to dramatically increase strength and towing capacity.

Lance-exclusive cabover shocks ("cabover struts") have quick-release stainless steel connectors

Happijac Qwik-Load™ turnbuckle upgrades make anchoring your camper a snap

Within Air Lift's Super Duty air springs ("air bags") are the Lance-exclusive internal jounce bumpers

- 1 Reese® Tow Beast™ Class V hitch/extension system increases your towing capabilities over your truck's factory-stock hitch.
- 2 ASA® wireless rear-view camera/microphone and in-cab monitor lets you see – and hear – what's behind you.
- 3 Happijac® frame-mount anchoring system and front-mounted centering guides assist with center alignment within the truck bed.
- 4 Happijac front and rear turnbuckles safely and securely attach and anchor the camper to your truck.
- 5 Air Lift® Super Duty™ air springs ("air bags") increase stability and levels the rig by transferring rear axle load forward.
- 6 Rancho® RS-9000X™ front and rear shocks greatly improve ride in all weather and road conditions.
- 7 Air Lift Air-On-Demand™ in-cab control controls the air compressor and pressure for the air springs ("air bags") and shocks.
- 8 Lance Custom Design™ cabover shocks ("cabover struts") reduce the impact of up-and-down motion from irregular roads.
- 9 Rear-mounted centering guides assist in positioning your camper within the truck bed, and are available for most truck models.

One of the many advantages of choosing a Lance truck camper as your RV is the ability to tow all your toys

REESE



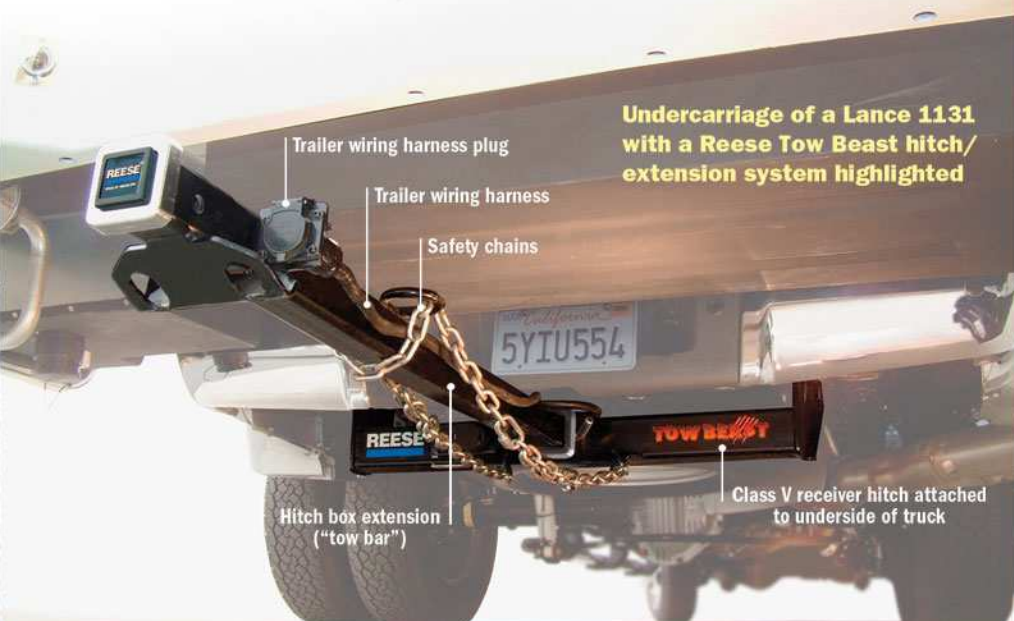
When towing items behind larger Lance camper models, extending the hitch from the truck rearward to the camper bumper is necessary. (See chart at right for towing capacities of all models.)

The method Lance recommends involves a truck-mounted Class V receiver hitch and hitch box extension (as detailed in the 3-D view photos on the dealer-installed equipment section on the opposite page). A draw bar with hitch ball is inserted into the hitch box extension, the same way it would be inserted into the receiver hitch itself.

Reese manufactures the Tow Beast Class V receiver hitch and hitch box extension specifically for truck camper applications. It replaces standard truck factory-stock receivers to allow for a greater towing capacity over factory-stock hitch systems.

The other important benefit is that the Reese Tow Beast Class V system doesn't require you to attach the receiver hitch or hitch box extension to the camper. The hitch box extension can be in place when loading or unloading your camper. For very heavy loads, the hitch box extension in combination with a weight-equalizing hitch can be used. The chart at the lower right gives capacities for Reese's Tow Beast Class V hitch box extensions.

Always observe your truck's tow ratings – and the advice of your Factory Authorized Lance Dealer. Their service teams have the knowledge, experience and skill to outfit your rig correctly.



Undercarriage of a Lance 1131 with a Reese Tow Beast hitch/extension system highlighted

Trailer wiring harness plug

Trailer wiring harness

Safety chains

Hitch box extension ("tow bar")

Class V receiver hitch attached to underside of truck

Tow capacities for Lance models requiring only a Reese Tow Beast Class V receiver hitch

	Weight carrying/ tongue weight	Weight distributing/ tongue weight
Lance 805 long bed	12,000 pounds/ 1200 pounds	14,000 pounds/ 1400 pounds
Lance 815 long bed		
Lance 835		
Lance 805 short bed	6000 pounds/ 600 pounds	8000 pounds/ 800 pounds

Tow capacities for Lance models requiring both a Reese Tow Beast Class V receiver hitch and hitch box extension

	Weight carrying/ tongue weight	Weight distributing/ tongue weight	Length of cut extension
Lance 815 short bed	6000 pounds/ 600 pounds	8000 pounds/ 800 pounds	24"*
Lance 825 short bed			
Lance 830 short bed			
Lance 845 short bed			
Lance 861 short bed			
Lance 915			
Lance 971			
Lance 981			
Lance 992			
Lance 1040			
Lance 1055	5000 pounds/ 500 pounds	7500 pounds/ 750 pounds	41"*
Lance 1181			
Lance 1191			

*A universal heavy-duty 34" or 48" factory-stock Reese extension is cut down by a technical service professional to fit your particular application.

*Dealer modifications required. Consult your Factory Authorized Lance Dealer for professional technical advice and proper equipment installation. All above weights, dimensions and capacities are approximate values – and subject to change without notice. All measurements are based on an 8.75-inch standard drop ball mount. Some capacities may vary depending on vehicle application. Be safe – always consult with your Factory Authorized Lance Dealer beforehand.

Own a truck? You're halfway to a great RV.



Why now – more than ever – a Lance truck camper makes sense as your RV-of-choice.

Versatility **A Lance camper and pickup truck combination is like owning four different vehicles in one.**

A comfortable motorhome. A powerful tow vehicle. An all-season, all-terrain RV. A second car around town. And only a Lance camper allows you to select so many options to suit your individual needs. Your Lance can be as versatile as you need it to be.

Flexibility **Tow any of your toys. Boat, horse trailer, motorcycles, cargo trailer, snowmobiles, ATVs. Whatever.**

At camp, uncouple your toy trailer – unload your camper with pushbutton ease – and you're free to take your truck and travel. And because your Lance is fully self-contained, there's no need for hookups – so you can travel and camp places other RVs dare not go.

Handling **No other RV maneuvers like a Lance camper – especially with a four-wheel-drive truck.** On or off the road, a Lance handles like a single, integrated unit with your truck – and there's no need to get used to a new vehicle. Turns are tighter. No trouble backing-up. Parking is simple. Driving up or down grades is easier. And snow, sand and streams are less of a problem. You can really get away from it all in a Lance.

Affordable **Own a truck? You're already halfway to a great RV.** With a purchase price far less than a motorhome, a Lance actually costs less to own and operate, too. No registration. Minimal insurance. No storage costs if stored at home. Better fuel economy. The lowest-cost maintenance of any RV. A well-engineered, well-built, high-quality product that keeps its resale value better than any other RV on the road.