

SAVOY® LX

2009



HOLIDAY RAMBLER®

This is Living®



Savoy LX



Savoy® *LX*
2009

WELCOME TO THE SAVOY

Take a closer look, and you'll discover that Holiday Rambler, a brand of Monaco Coach Corporation, gives you more industry "bests" than any other RV manufacturer. The convenience of our 350 service centers. The value of Monaco Financial Services. And the online support of holidayrambler.com. At Holiday Rambler, we've built our reputation by listening to you — and answering to you. And that's the difference that's made us the best.



MODEL 31SKT | SHOWN WITH MOUNTAIN REDWOOD DECOR

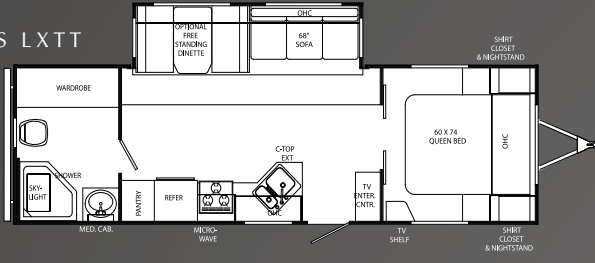


| FIFTH WHEEL |

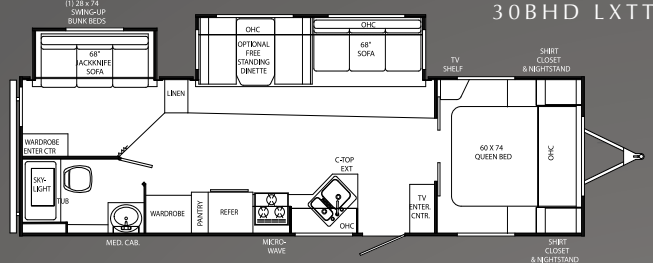
| TRAVEL TRAILER |



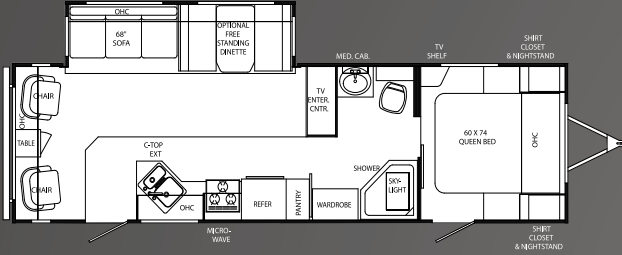
28RBS LXTT



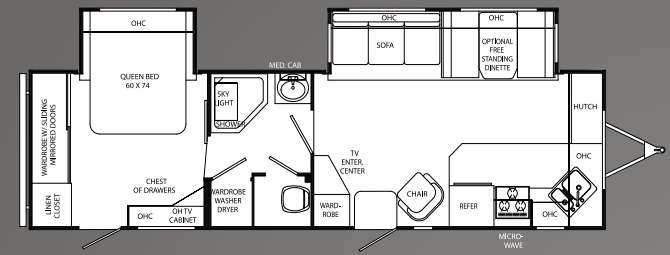
30BHD LXTT



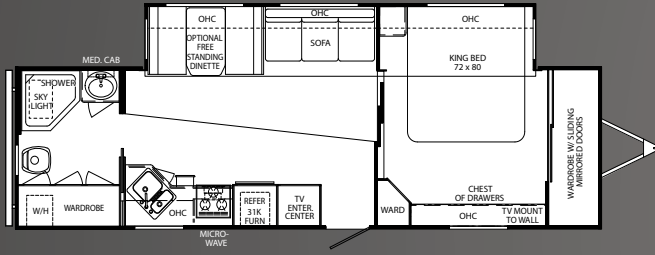
30RLS LXTT



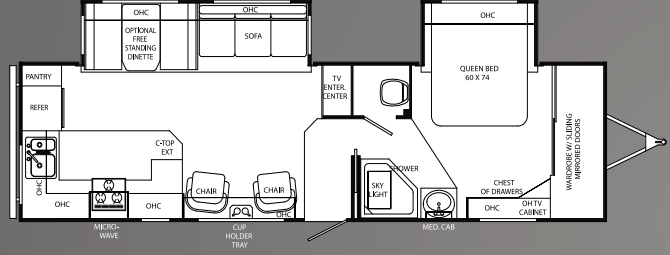
32FKD LXTT



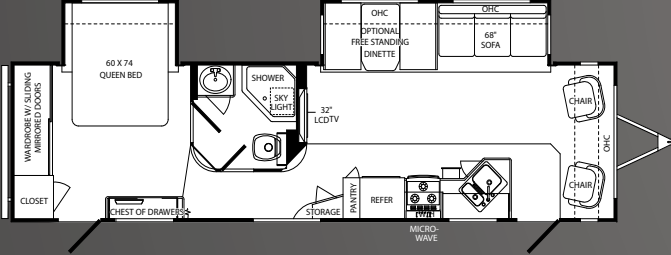
32RBS LXTT



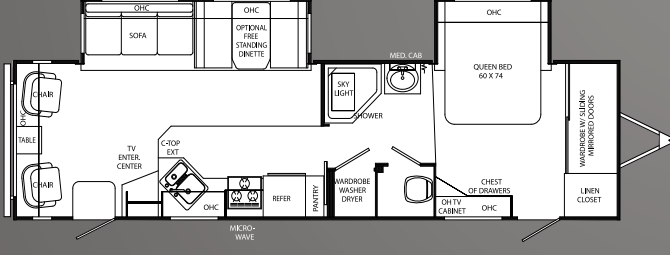
32RKD LXTT



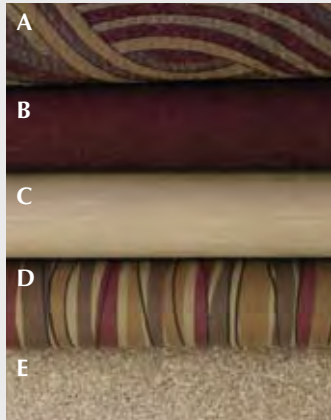
33FLD LXTT



34SKD LXTT



DECOR OPTIONS



Mountain Redwood



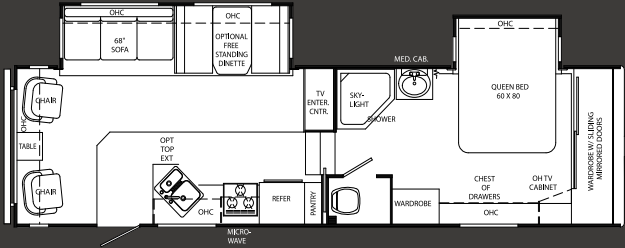
Yorktown Ginger



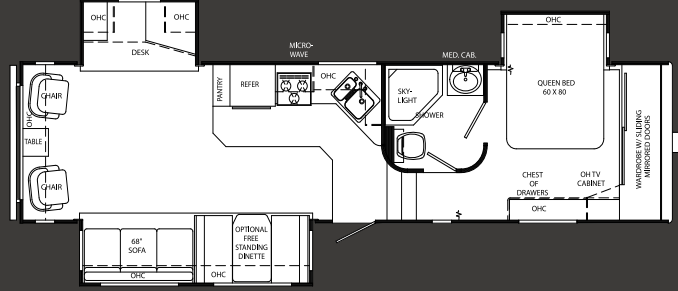
Meadow

- A. Sofa & Dinette Chair
- B. Recliner
- C. Accent
- D. Bedroom
- E. Carpet

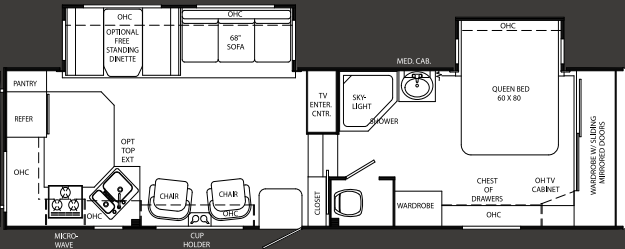
28RLD LXFV



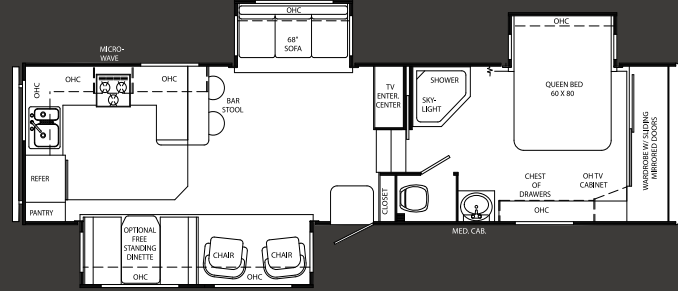
31SKT LXFV



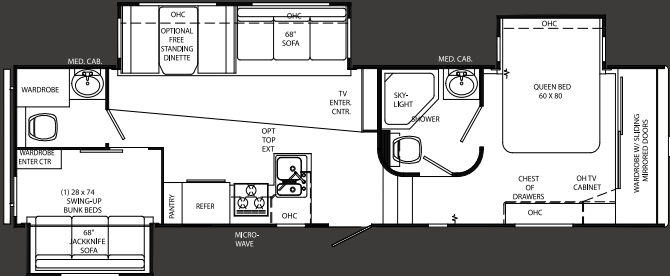
29RKD LXFV



32RKT LXFV



31BHT LXFV



SAVOY LX SPECIFICATIONS

| | LX TT | LX TT | LX TT | LX TT | LX TT | LX TT | LX TT | LX TT | LX TT | LX FW | LX FW | LX FW | LX FW | LX FW |
|--------------------------------|---------|--------|--------|--------|--------|--------|--------|--------|---------|---------|--------|--------|--------|-------|
| Weights* | 28RBS | 30BHD | 30RLS | 32FKD | 32RBS | 32RKD | 33FLD | 34SKD | 28RLD | 29RKD | 31BHT | 31SKT | 32RKT | |
| Gross Vehicle Weight Rating | 10,100 | 10,100 | 10,100 | 10,100 | 10,100 | 10,100 | 10,100 | 10,100 | 12,400 | 12,400 | 12,109 | 12,050 | 12,400 | |
| Hitch Weight | 700 | 740 | 695 | 1,215 | 980 | 1,000 | 920 | 930 | 1,950 | 1,950 | 1,950 | 1,890 | TBD | |
| Axle(s) Weight | 5,200 | 5,200 | 5,200 | 5,200 | 5,200 | 5,200 | 5,200 | 5,200 | 5,200 | 5,200 | 5,200 | 5,200 | 5,200 | |
| Unloaded Vehicle Weight | 6,570 | 7,370 | 6,930 | 7,600 | 7,690 | 7,580 | 7,780 | 7,800 | 8,490 | 8,390 | 9,360 | 9,370 | TBD | |
| Net Carrying Capacity (NCC) | 3,530 | 2,730 | 3,170 | 2,500 | 2,410 | 2,520 | 2,320 | 2,300 | 3,910 | 4,010 | 2,749 | 2,680 | TBD | |
| Tire Size and Load Range | 15" D | 15" D | 15" D | 15" D | 15" D | 15" D | 15" D | 15" D | 15" D | 15" D | 15" D | 15" D | 15" D | 15" D |
| Measurements | | | | | | | | | | | | | | |
| Overall Length | 30' 10" | 33' | 32' 5" | 33' 6" | 34' 1" | 34' 1" | 35' 1" | 35' 1" | 31' 10" | 32' 10" | 34' | 34' | 34' | |
| Overall Height (Including A/C) | 11' | 11' | 11' | 11' 1" | 11' | 10' 9" | 11' | 11' | 12' 6" | 12' 6" | 12' 6" | 12' 6" | TBD | |
| Exterior Width | 98" | 98" | 98" | 98" | 98" | 98" | 98" | 98" | 98" | 98" | 98" | 98" | 98" | |
| Awning Length | 17' | 17' | 19' | 17' | 18' | 20' | 18' | 20' | 14' | 14' | 15' | 15' | 15' | |
| Tank Capacities (Gal.) | | | | | | | | | | | | | | |
| Water Heater | 6 | 6 | 6 | 6 | 6 | 6 | 6 | 6 | 6 | 6 | 6 | 6 | 6 | |
| Grey Tank | 40/40 | 40/40 | 40/40 | 40/40 | 40/40 | 40/40 | 40/40 | 40/40 | 40/40 | 40/40 | 40/40 | 40/40 | 40/40 | |
| Black Tank | 40 | 40 | 40 | 40 | 40 | 40 | 40 | 40 | 40 | 40 | 40/40 | 40 | 40 | |
| Fresh Tank | 50 | 50 | 50 | 50 | 50 | 50 | 50 | 50 | 50 | 50 | 50 | 50 | 50 | |
| L.P. Tank | 30 (2) | 30 (2) | 30 (2) | 30 (2) | 30 (2) | 30 (2) | 30 (2) | 30 (2) | 30 (2) | 30 (2) | 30 (2) | 30 (2) | 30 (2) | |

* Weights may vary by options.

** Variances in the fabrication and installation of the tanks may cause the actual "usable capacity" to be greater or less than the capacities designated above.

*** Actual filled LP capacity is 80% of listing due to safety shut-off required on tank.



LX TT
LX FW

BODY CONSTRUCTION: FEATURES

| | | |
|---|---|---|
| • 2" Laminated Sidewall Construction with Welded Tubular Aluminum Studs | x | x |
| • I-Beam Frame | x | x |
| • Smooth White Fiberglass Exterior Walls | x | x |
| • Front Molded Fiberglass Cap | x | x |
| • Pass-Thru Storage (Where Applicable) | x | x |
| • Rain Gutters with Down Spouts | x | x |
| • 5/8" Sturdi-wood Flooring | x | x |
| • 3/8" Full Walk-on Roof Decking | x | x |
| • 5" Roof Trusses, 16" on Center | x | x |
| • Flat Floor Slide Room with Manual Backup | x | x |
| • Seamless One-Piece Exterior Roof Membrane | x | x |
| • Heated and Enclosed Underbelly | x | x |
| • Stylized 15" Radial White Sport Wheels with Chrome Center Hub Cap | x | x |
| • Extended Hitch Pin | | x |
| • Stabilizer Jacks (Rear) | x | x |
| • Front Electric Jacks (FW) | | x |
| • Spare Tire With Sport Wheel and Vinyl Tire Cover Mounted on Bumper | x | x |

OPTIONS

| | | |
|---|---|---|
| • Roof Ladder | x | x |
| • Shock Absorbers | x | x |
| • Aluminum Wheels | x | x |
| • Full LP Bottle Cover | x | |
| • Lighted Power Hitch Jack | x | |
| • Sidewinder Hitch (For Short Bed Trucks) | | x |
| • Camping Convenience Package (Thule Table, Organizer, Trash Bag) | x | x |

APPLIANCES: FEATURES

| | | |
|--|---|---|
| • 6 cu. ft. Refrigerator | x | x |
| • 6 Panel Refrigerator Insert | x | x |
| • Microwave with Touch Control | x | x |
| • Wedgewood High Output 3-Burner Range with Oven | x | x |
| • Home Theater Surround Sound System | x | x |
| • Systems Monitor Panel | x | x |
| • Built-in Wood Knife Holder Behind Stove | x | x |

OPTIONS

| | | |
|---|---|---|
| • 8 cu. ft. Refrigerator | x | x |
| • 10 cu. ft. Refrigerator | x | x |
| • Bi-fold Range Cover | x | x |
| • 22" LCD Color TV | x | |
| • 26" LCD Color TV with HD Tuner and Mounting Bracket | | x |
| • Washer Dryer Prep (LX TT 32FKD, 34SKD Only) | x | |

INTERIORS: FEATURES

| | | |
|---|---|---|
| • Golden Select Cabinets | x | x |
| • Slide-Out Room Wood Fascia with Decorative Insert | x | x |
| • Lower Bed Storage, Bed Lifts Easily with Gas Struts | x | x |
| • TV Shelf in Bedroom | x | |
| • TV Cabinet in Bedroom Overhead | | x |

LX TT
LX FW

| | | |
|---|---|---|
| • Linoleum in Kitchen, Bath and Entry | x | x |
| • Medicine Cabinet with Mirror in Bathroom | x | x |
| • Laundry Hamper Chute (N/A: 32FKD, 32RKD, 34SKD) | x | x |

OPTIONS

| | | |
|--|---|---|
| • Decors: Meadow, Yorktown Ginger, Mountain Redwood | x | x |
| • Kitchen Countertop Extension (N/A: 32RBS, 32FKD, 31SKT, 32RKT) | x | x |
| • Designer Accessory Package | x | x |

FUNITURES: FEATURES

| | | |
|--|---|---|
| • Queen Bed | | x |
| • Queen Bed with Nightstands (28RBS, 30BHD, 30RLS) | x | |
| • Jack Knife Sleeper Sofa | x | x |
| • Wood Booth Dinette | x | x |
| • Swivel Barrel Chair (2) (Where Applicable) (N/A: 31BHT, 28RBS, 30BHD, 32RBS) | x | x |
| • Two Bar Stools in Kitchen (32RKT) | | x |

OPTIONS

| | | |
|---|---|---|
| • Euro Chairs with Ottoman (Where Applicable) (N/A: 31BHT, 28RBS, 30BHD, 32RBS) | x | x |
| • Hide-A-Bed Sofa with Air Mattress in Storage Drawer | x | x |
| • Free-Standing Dinette Table with Four Wood Chairs | x | x |
| • High Back Desk Chair (31SKT Only) | | x |

ELECTRICAL SYSTEMS AND LIGHTS: FEATURES

| | | |
|---|---|---|
| • Electrical Management System (30 AMP/12V 55AMP Converter) | x | x |
| • Cable TV/Satellite Hook-up | x | x |
| • Exterior Cable or Satellite Receptacle | x | x |
| • Battery Disconnect and Battery Box | | x |
| • Decorative Wall Light In Living Area | x | x |
| • Decorative Ceiling Dinette Light | x | x |
| • Security Lights with Lighted Switch | x | x |

OPTIONS

| | | |
|---|---|---|
| • Solar Prep | x | x |
| • 50 AMP Service (32RKT, 31SKT, 32FKD, 34SKD) | x | x |
| • 50 AMP Service with Second A/C Prep (32RKT, 31SKT, 32RBS, 32FKD, 32RKD, 33FLD, 34SKD) | x | x |

PLUMBING AND LP SYSTEMS: FEATURES

| | | |
|---|---|---|
| • Deep Double Bowl Kitchen Sink with High Profile Double Handle Faucet | x | x |
| • 6-Gallon L.P. Gas/Electric Water Heater with Electronic Ignition | x | x |
| • Extra Large Lavatory with Double Handle Faucet | x | x |
| • Outside Shower | x | x |
| • ABS Tub with Surround and Glass Door (30BHD) | x | |
| • ABS Neo-Angle Shower with One-Piece Surround and Glass Door (N/A 30BHD) | x | x |
| • Satin Nickel Shower Fixtures and Faucet | x | x |
| • Two 30 lb. L.P. Tanks with Automatic Changeover | x | x |
| • Water Heater By-pass Kit | x | x |
| • Centralized Water Management System | x | x |

Due to continuous product improvement, please see the website for the latest in standards and options, specifications, and technical data. *Go to www.holidayrambler.com.*

LXT
LXFW

LXT
LXFW

OPTIONS

| | | |
|---|---|---|
| • No-Fuss Holding Tank Rinsing System | x | x |
| • 10 Gal. L.P. Gas/Electric Water Heater with Electronic Ignition | x | x |

HEATING, VENTS AND AIR CONDITIONING: FEATURES

| | | |
|---|---|---|
| • 30M BTU Hydroflame Electronic Ignition Furnace | x | x |
| • One Carrier Central 13,500 BTU In-Roof Ducted Air Conditioner with Remote Control | x | x |
| • Forced Air Heating System | x | x |

OPTIONS

| | | |
|--|---|---|
| • One Carrier 15,000 BTU Central A/C with Remote Control | x | x |
| • Second Carrier 13,500 BTU In-Roof Ducted A/C with Remote Control (32RBS, 32FDK, 32RKD, 33FLD, 34SKD, 32RKT, 31SKT) | x | x |

WINDOWS AND DOORS: FEATURES

| | | |
|--|---|---|
| • Tinted Skylight in Bathroom | x | x |
| • Swing-Out Entry Door Handle | x | x |
| • Front Window with Stone Guard/Awning (32RBS, 32RKD, 34SKD) | x | |
| • Tinted Safety Glass Windows | x | x |

OPTIONS

| | | |
|------------------------------|---|---|
| • Ceiling Fan | | x |
| • Main Electric Patio Awning | x | x |

WINDOW TREATMENTS: FEATURES

| | | |
|--|---|---|
| • Pleated Day/Blackout Shades in Living Area and Bedroom | x | x |
|--|---|---|

ADVANTAGE PACKAGE

| | | |
|--|---|---|
| • Heated, Enclosed and Insulated Underbelly | x | x |
| • Glass Shower Door | x | x |
| • Tinted Windows | x | x |
| • Centralized Exterior Water Management Center with Outside Shower | x | x |
| • Built-In Wood Knife Holder | x | x |
| • Slide-Out Room Wood Fascia with Decorative Insert | x | x |
| • Carrier 13,500 BTU Air Conditioner with Remote Control | x | x |
| • Microwave with Touch Control | x | x |

SAVOY LX FEATURES

- Optional Hide-A-Bed sofa with electric air mattress
- Optional high back solid wood chairs with convenient under cushion storage
- Optional free-standing dinette table and chairs with convenient storage under the table top
- Water management system with integrated hot/cold water outside shower
- Enormous outside pass-thru storage with access from either side or front





HOLIDAY RAMBLER®

This is Living®

BEING DIFFERENT MAKES ALL THE DIFFERENCE.

Take a closer look, and you'll discover that Holiday Rambler, a brand of Monaco Coach Corporation, gives you more industry "bests" than any other RV manufacturer. The convenience of our 350 service centers. The value of Monaco Financial Services. And the online support of holidayrambler.com. At Holiday Rambler, we've built our reputation by listening to you — and answering to you. And that's the difference that's made us the best.

WARRANTIES

12 MONTH basic limited warranty

2 YEAR limited warranty on steel frame structure

PRESIDENTIAL SUITE

PRESIDENTIAL

ALUMASCAPE SUITE

ALUMASCAPE

NEXT LEVEL

SAVOY LX

MINTARO

BLACK DIAMOND

CAMPMASTER

Due to the large variety of options and floorplan arrangements available to our customers, actual weights for each unit can differ significantly. Holiday Rambler provides a weight sticker on each unit we produce which includes that unit's tank capacities and approximate weight. Consult your local Holiday Rambler dealer for unit availability and further information.

The information printed in this brochure reflects product design, fabrication, and component parts at the date of printing. The manufacturer reserves the right, at any time, to make changes in product design or material or component specifications as its sole option, without notice. This includes the substitution of components of a different brand or trade name, which will result in comparable performance. All information printed in this brochure is subject to change after the date of printing. Some features shown or mentioned in this brochure are optional and may only be available in selected floorplans. Photographs may show props or decorations that are not standard equipment on Holiday Rambler models. Holiday Rambler, the HR logo and its design, are registered trademarks. All other products and company names are trademarks and/or registered trademarks of their respective holders.

While the color of the towable's exterior and the interior fabrics depicted in this sales brochure are fair and reasonable depictions, the colors depicted may not be an exact match of the actual colors because of the variances in photo-processing and variances caused by

inserting the photographs within the sales brochure. Due to product improvements, changes during the model year and/or transcription errors that may occur, information represented within this brochure may not be accurate at the time of your purchase. If certain information is significant to your purchasing decision, please confirm the information with your dealer prior to submitting your order.

The actual overall length of the recreational vehicle may differ from that indicated in the brochure due to variances in the manufacturing process and/or installed components. The actual length may be greater or less than that indicated.

Component part and appliance manufacturers issue limited warranties covering those portions of the recreational vehicle not covered by the Limited Warranties issued by Monaco Coach Corporation. To learn which specific component parts and appliances are excluded from the Limited Warranties issued by Monaco Coach Corporation, please contact your selling dealership or Monaco Coach Corporation directly, or review the warranty packet inside the recreational vehicle.