

ARISTA®  
2009



HOLIDAY RAMBLER®

*This is Living®*



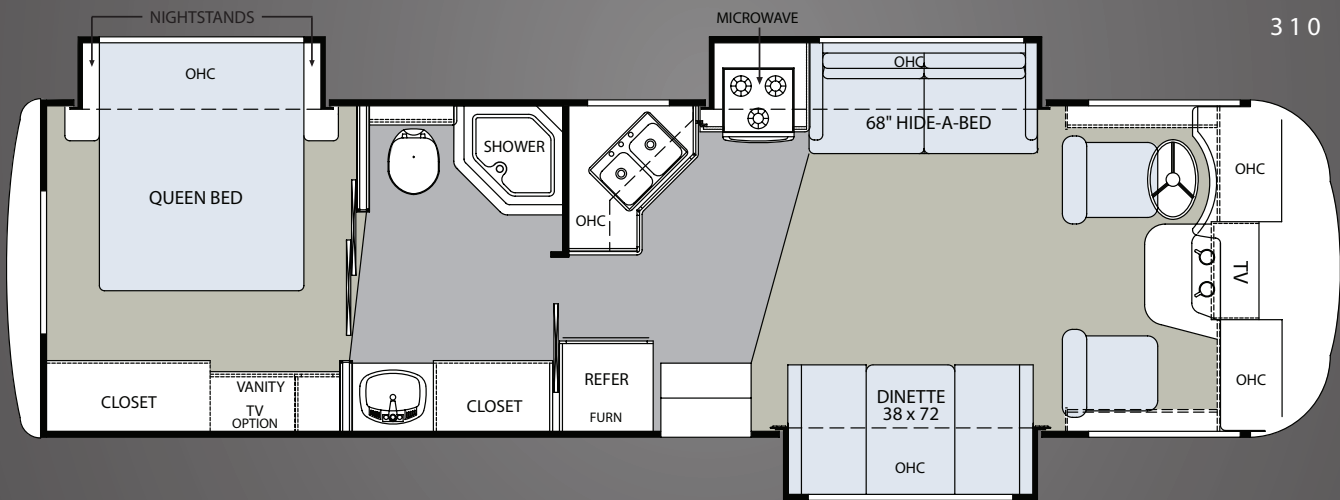
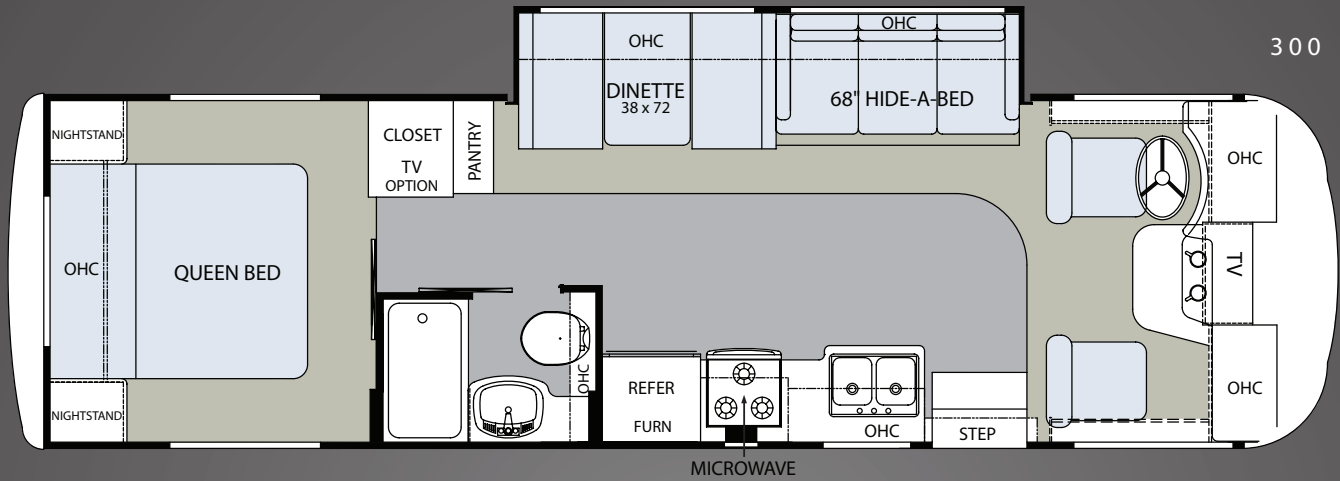
*Arista*





Arista®  
2009





■ CARPET | ■ LINOLEUM

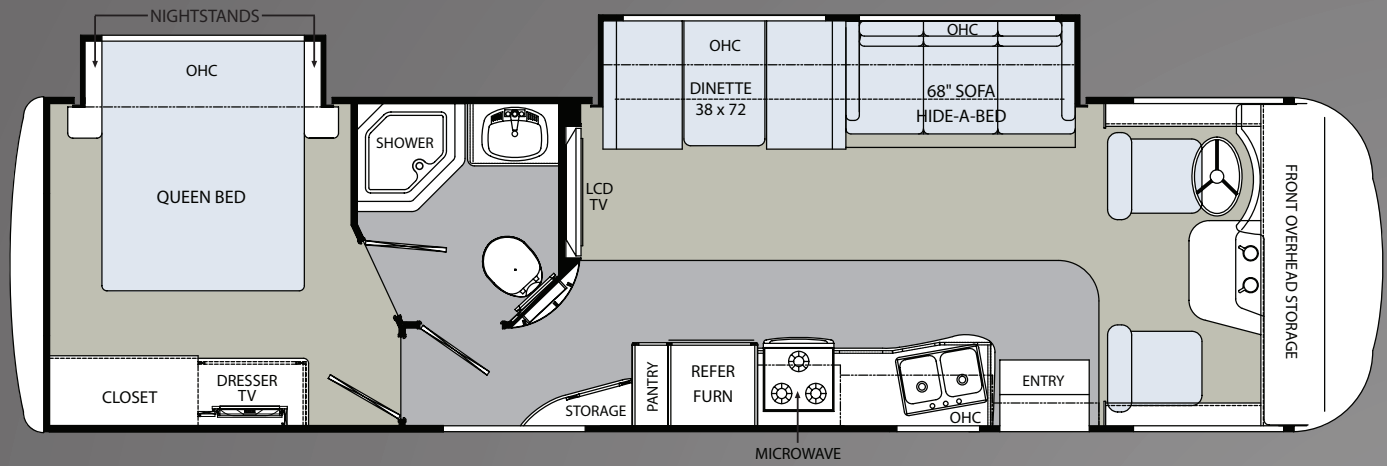
H O L I D A Y R A M B L E R . C O M

Log on to our website anytime, night or day. It's your link to everything Holiday Rambler, including product news and updates, club events, dealer and service center info and much more. Take it for a test drive today.

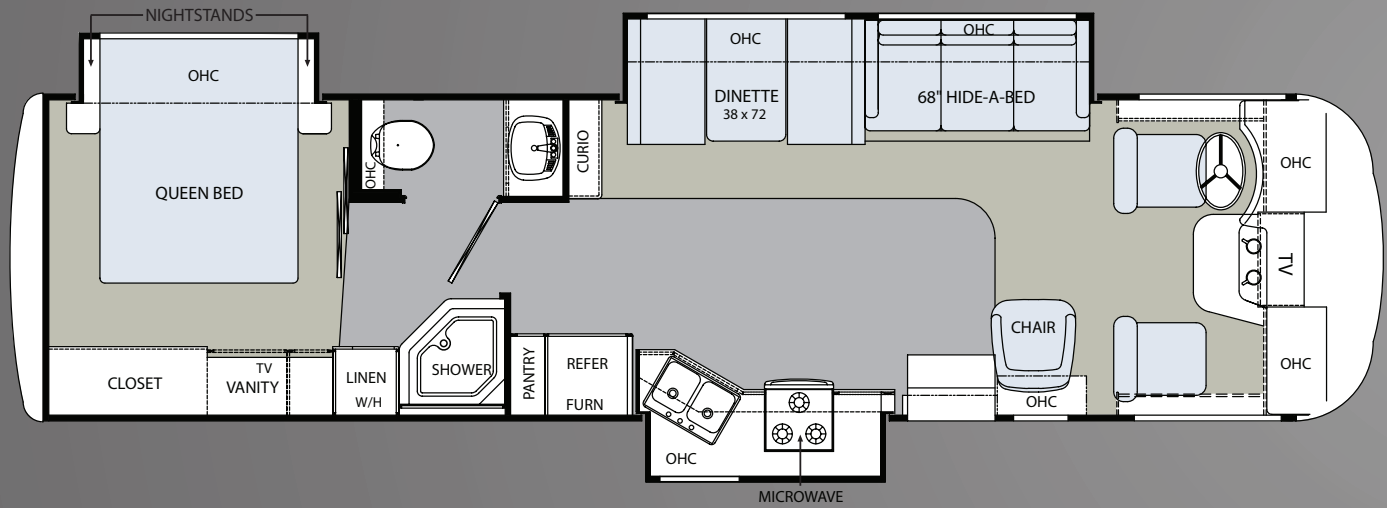




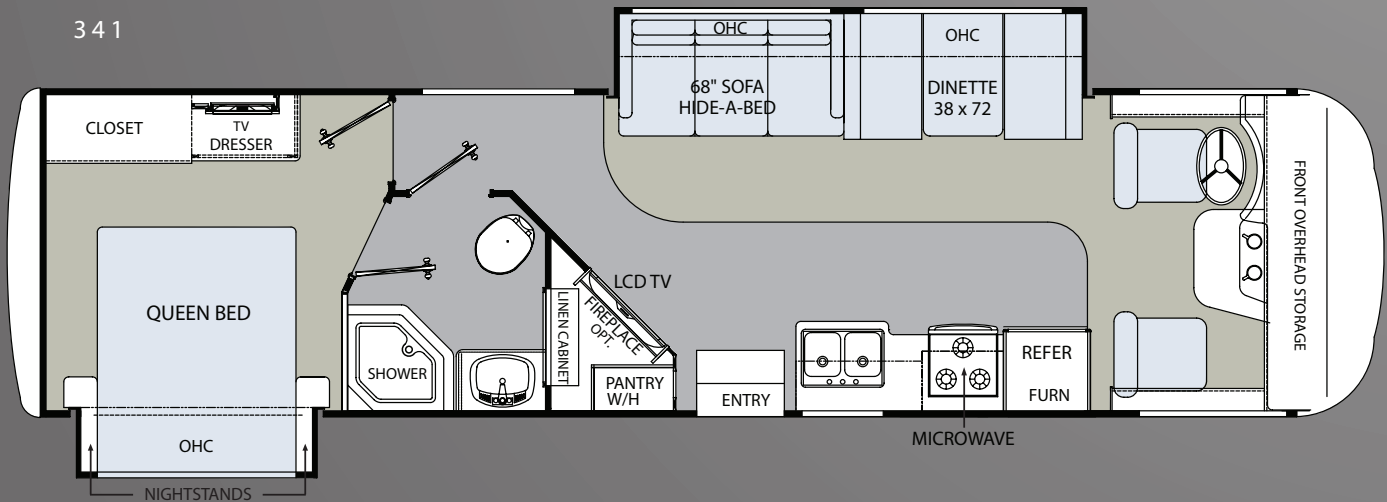
330



340



341



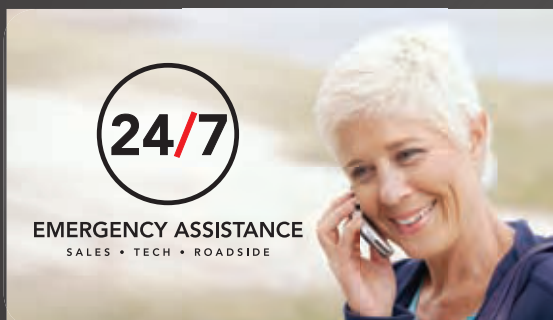
Weights (Workhorse Chassis - 8.1 L Vortec - V-8) * (Lbs.)	300	310	330	340	341
Gross Vehicle Weight Rating	16,000	18,000	21,200	21,200	21,200
Gross Combined Weight Rating	22,000	22,000	26,000	26,000	26,000
Front Gross Axle Weight Rating	6,500	7,000	7,500	7,500	7,500
Rear Gross Axle Weight Rating	10,500	12,000	13,500	13,500	13,500
Weights (Ford Chassis - 6.8 L Triton - V-10) * (Lbs.)					
Gross Vehicle Weight Rating	16,000	18,000	20,500	20,500	20,500
Gross Combined Weight Rating	26,000	26,000	26,000	26,000	26,000
Front Gross Axle Weight Rating	6,500	7,000	7,000	7,000	7,000
Rear Gross Axle Weight Rating	11,000	11,000	13,500	13,500	13,500
Measurements					
Wheelbase - Workhorse / Ford	190"	190"	208"	208"	208"
Overall Length, Without Ladder - Workhorse / Ford	31'	32' 8"	33' 11"	34' 8"	34' 8"
Overall Height, Including A/C	11' 8"	11' 8"	11' 8"	11' 8"	11' 8"
Interior Height	80"	80"	80"	80"	80"
Interior Width	95.5"	95.5"	95.5"	95.5"	95.5"
Exterior Width	99"	99"	99"	99"	99"
Tank Capacities ** (Gal.)					
Water Heater	6	6	6	6	6
Grey Tank	40	40	40	40	40
Black Tank	40	40	48	40	48
Fresh Tank	50	50	50	50	50
LP Tank (lb. / gal.)	68 / 16	68 / 16	68 / 16	68 / 16	68 / 16
Fuel - Workhorse / Ford	75	75	75	75	75

\* Towing capacity is limited by GCWR; your vehicle's towing capacity is the difference between the GCWR and the actual vehicle weight, including all water, fuel, passengers and cargo. Your towed vehicle should be equipped with auxiliary brakes if the weight of the towed vehicle exceeds 1,000 lbs. Consult your owner's manual for further towing information.

\*\* All tank capacities are estimated based upon calculations provided by the tank manufacturers and represent approximate capacities. The actual "usable capacity" may be greater or less than the estimated capacities based upon fabrication and installation of the tanks.

\*\*\* Actual filled LP capacity is 80% of listing due to safety shut-off required on tank.

The actual overall length of the recreational vehicle may differ from that indicated in the brochure due to variances in the manufacturing process and/or installed components. The actual length may be greater or less than that indicated. Due to the large variety of options and floorplan arrangements available to our customers, actual weights for each unit can differ significantly. Holiday Rambler provides a weight sticker on each unit we produce which includes that unit's tank capacities and approximate weight. Consult your local Holiday Rambler dealer for unit availability and further information. The information printed in this brochure reflects product design, fabrication, and component parts at the date of printing. The manufacturer reserves the right, at any time, to make changes in product design or material or component specifications as its sole option, without notice. This includes the substitution of components of a different brand or trade name which will result in comparable performance. All information printed in this brochure is subject to change after the date of printing. Some features shown or mentioned in this brochure are optional and may only be available in selected floorplans. Photographs may show props or decorations that are not standard equipment on Holiday Rambler models. Holiday Rambler, the Holiday Rambler logo and its design, are registered trademarks. All other products and company names are trademarks and/or registered trademarks of their respective holders. While the color of the motorhome's exterior and the interior fabrics depicted in this sales brochure are fair and reasonable depictions, the colors depicted may not be an exact match of the actual colors because of the variances in photo-processing and variances caused by inserting the photographs within the sales brochure. Due to product improvements, changes during the model year and/or transcription errors that may occur, information represented within this brochure may not be accurate at the time of your purchase. If certain information is significant to your purchasing decision, please confirm the information with your dealer prior to submitting your order. Component part and appliance manufacturers issue limited warranties covering those portions of the recreational vehicle not covered by the Limited Warranties issued by Monaco Coach Corporation. To learn which specific component parts and appliances are excluded from the Limited Warranties issued by Monaco Coach Corporation, please contact your selling dealership or Monaco Coach Corporation directly, or review the warranty packet inside the recreational vehicle.



## WE'RE HERE. ANYTIME, EVERY TIME.

- Reach us anytime — *literally* — via our live customer support line.
- Drive in to one of our 350 Service Centers.
- Enjoy the first year free when you enroll in our Owner Advantage Roadside Assistance Program.
- See where it all begins with a tour of our facility in Oregon. Call 1-800-634-0855 to find out more.



## EXTERIOR

- Fully Welded Tubular Aluminum Roof, Sidewalls and Floor
- Fully Laminated Roof, Walls and Floors with High-Density Block Foam Insulation
- Seamless Fiberglass Exterior Sidewalls
- Exterior Storage Compartments
- One-Piece Fiberglass Front and Rear Caps
- Rubber Roof
- Rear Ladder
- Flush-Mount Radius Baggage Doors
- Pass-Through Storage Areas
- Deluxe Exterior Mirrors
- Automatic Electric Entrance Step
- Fog Lights
- Rear Wheel Mud Flaps

## OPTIONS

- Partial Paint
- Heated Power Mirrors

## FORD CHASSIS/ENGINE/SUSPENSION

- 6.8L Triton<sup>®</sup> V-10, 3-Valve, Gasoline Engine with Sequential Electronic Fuel Injection (SEFI), 362 HP @ 4,750 RPM / 457 lb.-ft. Torque @ 3250 RPM
- Engine Displacement: 6.8 Liters 415 Cu. In.
- 5-Speed TorqShift<sup>®</sup> Automatic Transmission with Overdrive & Tow / Haul Mode
- 130 Amp Alternator
- Rear Axle Ratio 5.38:1
- Radial Tires
- Stainless Steel Wheel Liners with Valve Extenders
- Rear Multi-Leaf Spring Suspension
- Automatic Hydraulic Leveling Jacks (330, 340, 341)
- Four-wheel ABS Brake System
- 5,000lb Hitch Receiver with Dual Connector 4-Pin or 7-Pin
- Dash Heating and Air Conditioner System with Defroster
- One 12V Chassis Battery
- Emergency Start Switch

## WORKHORSE CHASSIS/ENGINE/SUSPENSION

- Vortec<sup>™</sup> 8.1L V-8, Sequential Fuel Injection (SFI), Gas Engine 340 HP@ 4,200 rpm; 455 lb.-ft. torque @ 3,200 rpm
- Engine Displacement: 8.1 Liters, 496 Cu. In.
- Hydra-matic 4L85-E, Automatic 4-speed Electric with Overdrive (300, 310)
- Allison 1000 MH Automatic 6-Speed Automatic Transmission with Overdrive and Transmission Grade Braking (N/A 300, 310)
- 145 Amp Alternator
- Rear Axle Ratio 4.63:1 (300, 310)
- Rear Axle Ratio 5.13:1 (330, 340, 341)
- Radial Tires
- Stainless Steel Wheel Liners with Valve Extenders
- Rear Multi-Leaf Spring Suspension
- Automatic Hydraulic Leveling Jacks (330, 340, 341)
- ABS Brake System
- 5,000lb Hitch Receiver with Dual Connector 4-Pin or 7-Pin
- Dash Heating and Air Conditioner System with Defroster
- One 12V Chassis Battery
- Emergency Start Circuit

## OPTIONS (WORKHORSE/FORD)

- Canadian RV Certification
- Transport Canada MVSR (Also Requires RIVA)
- Automatic Hydraulic Leveling Jacks (300, 310)

## COCKPIT

- AM / FM / CD / Cassette Radio with Weather Band and Sirius<sup>®</sup> Satellite Ready
- Wood Grain Dash Kit
- Dash Fans
- Multi-Positioned Sun Visors
- Factory Air Conditioning, Cruise Control and Tilt Steering Wheel
- Intermittent Windshield Wipers
- Map Lights
- Leatherette, Reclining Captain's Chairs

## OPTIONS

- Rear Vision System
- Six-Way Power Driver's Seat

## PLUMBING AND LP SYSTEMS

- 6 Gallon Gas Water Heater
- 12V Water Pump
- Exterior Utility Center (N/A 300, 310)
- Exterior Shower (N/A 300)
- Water Heater By-Pass Kit
- China Bowl Toilet
- Neo-Angled Shower w/ Glass Door (N/A 300)

## OPTIONS

- Exterior Shower (300)
- Glass Shower Door (300)

## FURNITURE

- Barrel Chair (340)
- Fabric Hide-a-Bed Sofa
- Queen Bed with Innerspring Mattress

## OPTIONS

- Leatherette Hide-a-Bed Sofa
- Leatherette Euro Recliner with Ottoman IPO Barrel Chair (340)

## APPLIANCES AND ACCESSORIES

- Double -Door Refrigerator
- 3-Burner High Output Gas Range with Oven
- 32" Color LCD TV in Main Living Area (330, 341)
- 26" Color LCD TV in Cockpit Overhead Cabinet (N/A 330, 341)
- 19" Color LCD TV - Bedroom (N/A 300, 310)
- Microwave Oven
- Slide-Out pantry (N/A 300, 310)
- Lighted Power Range Hood
- Cable TV & Satellite Dish Prep

## OPTIONS

- Half-Time Microwave Oven with 3-Burner Range Top

- Fireplace (341)
- Surround Sound Home Theater with DVD Player
- DVD Player
- 19" Color LCD TV - Bedroom (300, 310)
- Satellite Dish
- Exterior Entertainment Center, AM/ FM/CD with 2 Speakers

## INTERIOR

- Newport Cherry II Cabinetry
- Booth Dinette with Cabinet Doors
- Residential Linoleum (entry way, galley and bath)
- Soft-Touch Vinyl Ceiling (N/A 300, 310)
- Large Double Bowl Stainless Steel Kitchen Sink
- Single Lever Satin Nickel Lavatory Faucet
- Brushed Nickel Cabinet Hardware
- Mortise and Tenon Arched Raised Panel Overhead Cabinet Doors
- Laminate Countertops Throughout
- Kitchen Countertop Extension (341)
- Mini Blinds with Valances and Lambrequins
- Television Cabinet - Bedroom
- Bedroom Vanity w/ Stool (310, 340)
- Bedspread, Pillows and Pillow Shams
- Carpet with Padding

## OPTIONS

- Decors: Honeycomb II, Tobasco
- Day / Night Shades Throughout

## ELECTRICAL SYSTEMS

- 30 Amp 120V Distribution Panel (N/A 341)
- 50 Amp 120V Distribution Panel (341)
- Guardian 4.0 Kw Generator (300, 310)
- Guardian 5.5 Kw Generator (330, 340, 341)
- Shore Line Power Cord
- 12 V Auxiliary Battery
- Battery Disconnect Switch
- Overhead Lights in Living Room
- Porch Light

## OPTIONS

- 50 amp Service with 6-gal Gas/Elec. Water Heater
- Onan 4.0 Kw Generator (300, 310)
- Guardian 5.5 Kw Generator (300, 310)
- Onan 5.5 Kw Generator
- Second Auxiliary Battery

## HEATING, VENTS &amp; AIR CONDITIONING

- 13,500 BTU Roof Air Conditioner - Front
- In-Floor Rigid Heat Ducts
- 12V Power Roof Vent in Bathroom
- Heated Holding Tanks (330, 340, 341)

## OPTIONS

- 13,500 BTU Roof Air - Rear Requires 50 Amp Service & 5.5 Kw Generator
- Heat Pads for Holding Tanks (300, 310)
- Fantastic Fan - Living Room

## WINDOWS, DOORS AND AWNINGS

- Radius Entrance Door
- Patio Awning
- Slide-Out Topper Awnings
- Large Metal Entry Grab Handle
- Tinted Radius Corner Windows
- Skylight in Shower

## OPTIONS

- Dual Pane Windows

## SAFETY

- Fire Extinguisher
- Deadbolt Lock on Entrance Door
- GFI Protected Circuit, Exterior
- LP Gas Detector
- Smoke Detector
- Pilot and Co-Pilot Three-Point Seat Belts
- Carbon Monoxide Detector
- Seat Belts Throughout

ARISTA®  
2009



HOLIDAY RAMBLER®

*This is Living*

BEING DIFFERENT MAKES  
ALL THE DIFFERENCE.

At Monaco Coach Corporation, we always strive to be the best. And that means thinking outside of the box. Giving you more of what you want in an RV. Programs like Monaco Financial Services and 24/7 emergency technical support. No other manufacturer can match Monaco's offerings. No one even comes close. Why not discover the difference yourself?

Visit [www.monacodifferent.com](http://www.monacodifferent.com)

NAVIGATOR®

IMPERIAL™

SCEPTER®

ENDEAVOR®

AMBASSADOR®

NEPTUNE®

VACATIONER®

ADMIRAL®

ARISTA®

ATLANTIS®

AUGUSTA®

TRAVELER®