

2009 *Access*[®]



50 years on the road

Since the first Winnebago RV rolled off the assembly line 50 years ago, the RV lifestyle has grown from a curiosity to a phenomenon. We're proud to have led the way with innovative products, quality construction and a passion for customer satisfaction. Join all of us in the extended Winnebago Industries family as we celebrate 50 years of travel, tailgates and extended weekends.

Standard Graphics



STONE GRAY/MEDIUM BROWN/DARK BLUE

Deluxe Graphics



DARK GRAY METALLIC

Deluxe Graphics



CINNAMON GLAZE METALLIC

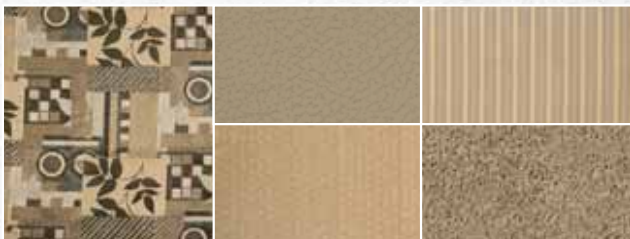


50 YEARS ON THE ROAD

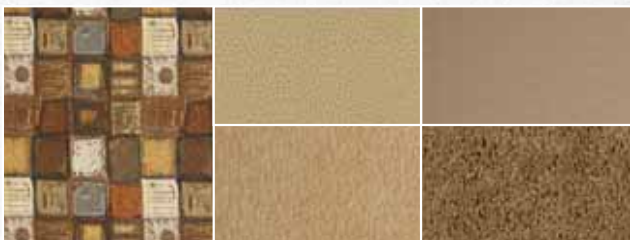
Interior Decor

Choose from three fabric selections with Sierra Maple cabinetry and satin nickel hardware.

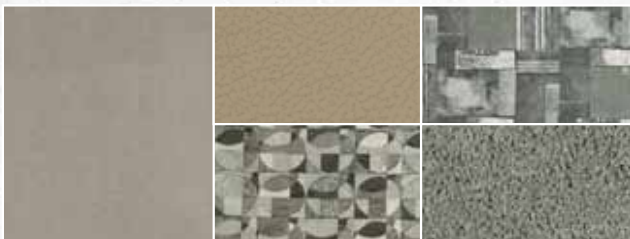
MAIN	ULTRA LEATHER	BEDSPREAD
	ACCENT	CARPET



BEECHNUT WITH AVAILABLE PUTTY ULTRALEATHER™



COPPER RIDGE WITH AVAILABLE BRIARWOOD ULTRALEATHER



SILVER ICE WITH AVAILABLE PUTTY ULTRALEATHER



SIERRA MAPLE

On the cover: 31C Dark Gray Metallic Deluxe Graphics

SMARTSPACE

titanium TOUCHSM
STAINLESS

WEB

31C Silver Ice with Sierra Maple

2009 Access[®]

Amazing adventures and memories await you in the get-up-and-go Winnebago Access[®] SmartSpace[™] design makes the most of the available space for an extremely versatile motor home with plenty of storage. Customize your Access with an available interior upgrade package that includes Titanium Touch[™] stainless refrigerator door inserts, glass cabinet door inserts and a range backsplash. Best of all, a surprisingly affordable price makes it easier than ever to own a new motor home. Find yourself in a 2009 Winnebago Access this year.

Ready to move.

Choices in floorplans and features make it easy to find an Access that perfectly fits your traveling needs. An overhead bunk comes standard with an available DVD player and wall-mounted 19" LCD TV that swings out for easy viewing. You can also choose an overhead entertainment center with a 32" LCD TV (NA 22B) and additional storage. Both TVs include a video selection system that allows you to watch a DVD on the bedroom TV. Add the home theater sound system for a DVD player, receiver, surround-sound speakers and a subwoofer (NA 22B).

The galley provides all the essentials for cooking a great meal, including a 3-burner range and a microwave oven. You can also choose to add an oven below the range for additional meal flexibility.

The Access is even easy to drive with available split-glass convex power mirrors and an available rearview monitor system.



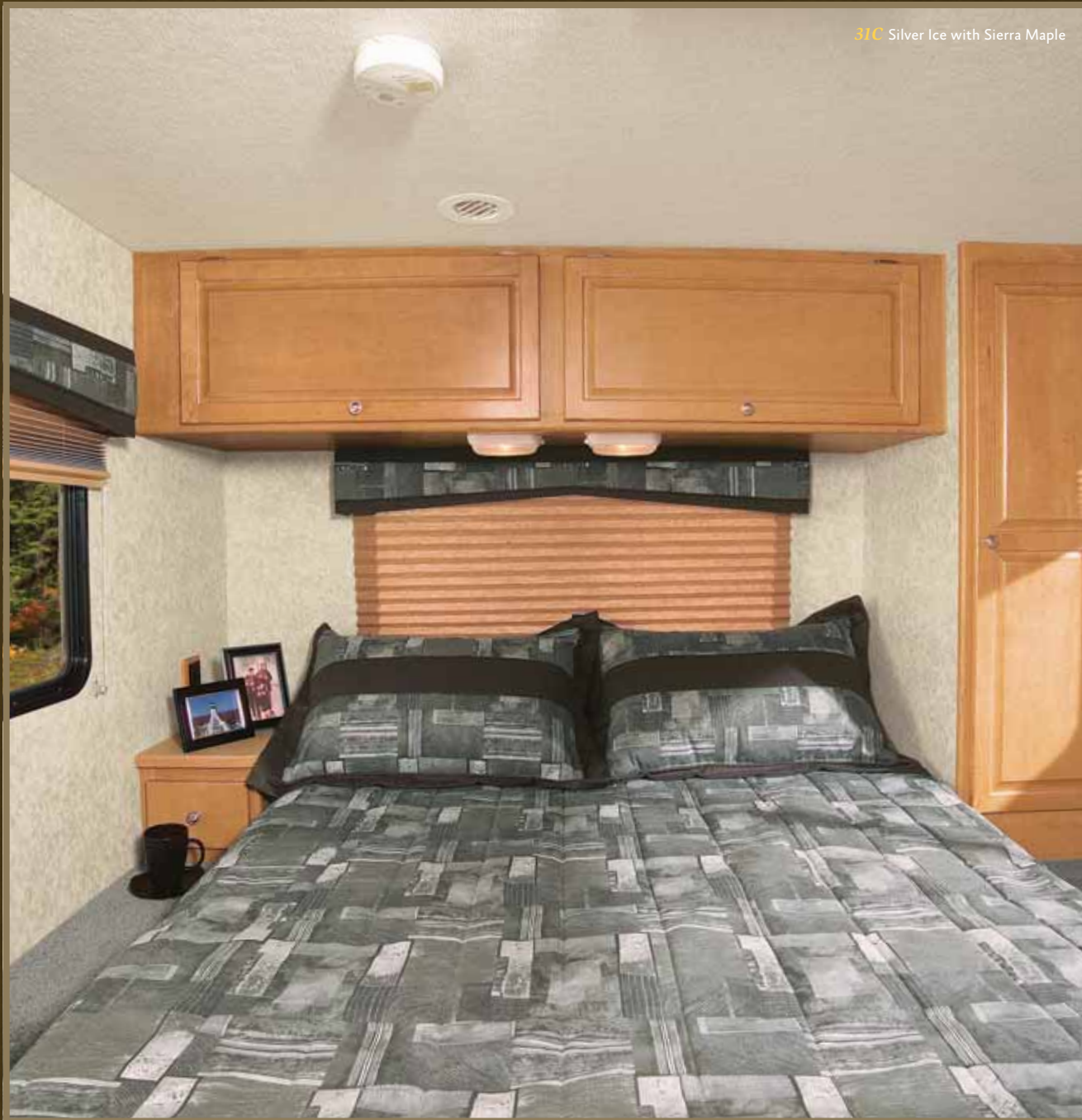
The **WEB** icon designates a Winnebago Industries Key Feature. For further in-depth information and photos, use the drop-down menu or click on the 'Key Features' page at gowinnebago.com.



DINETTE The dinette quickly converts into a bed and provides plenty of additional underseat storage.



FULL-EXTENSION SLIDES Drawers extend fully for easy access and are sized to accommodate more items.



31C Silver Ice with Sierra Maple

BEDROOM 29T and larger models provide the comfort and privacy of a master bedroom with a queen bed and wardrobe. The bathroom shower features a shower door that self cleans as it retracts (NA 31N).



TV The bedroom can be enhanced with an available 15" (24V, 29T, 31C and 31J) or 19" TV (31N) that can be taken outside and placed on the exterior TV bracket for viewing under the stars.



BUNK BEDS The 31J offers bunk beds and a rear bedroom with a queen bed and large wardrobe. Optional DVD players will have the kids looking forward to bedtime.



WEB TRUELEVEL. The TrueLevel holding tank monitoring system uses sonar technology to read liquid levels from outside the tank. There are no probes to corrode or clog, just accurate readings time after time.



BATTERIES Add a second large-capacity Group 31 RV battery for a longer battery reserve and up to a 44% amp.-hour increase over last year's offering.

Outdoor fun.

If packing light isn't your thing, you'll appreciate the Smart Storage™ design of the Access. The 29T and 31C feature a large rear storage trunk with access from the rear and side so you can easily carry bulky items. For auxiliary power, the Access comes with a powerful Group 31 RV battery and can be equipped with a 4,000-watt Cummins Onan® MicroQuiet™ generator.

An awning is available for relaxing in the shade and an exterior upgrade package can be added, which includes a rear ladder, rubber-tread steps and painted running boards. Stainless steel wheel liners are also available for extra flair. You can even extend your travel later into the season by choosing the heated drainage system.



REAR STORAGE Carry large, bulky items in the rear storage trunk of the 29T and 31C. Part of the available accessory package, the rear storage compartment cover doubles as a folding table.

EXTERIOR STORAGE

Carry wet gear or even keep drinks on ice in the recessed storage area with a convenient drain.



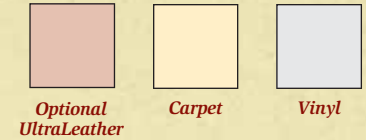
EXTERIOR TV MOUNT

The available bedroom LCD TV can easily be taken outside and hung on the exterior mount.



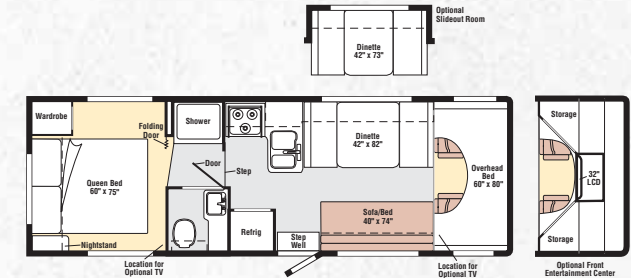
2009 Access® Floorplans & Specifications

Dimensions shown are for sleeping space only and may vary due to styling differences. Dashed lines denote overhead storage areas. Floorplans and specifications are also available online at: gowinnebago.com

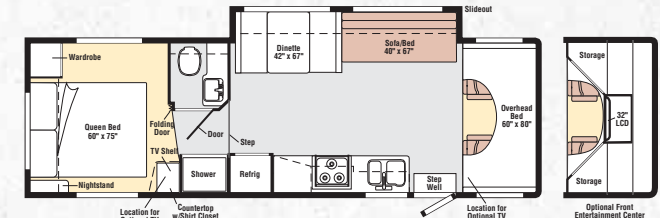


Weights & Measures	22B	24V	29T	31C	31J	31N
Length	23' ^A	25' ^A /25' ^B /25' ^C	30' ⁵ / ^B /30' ¹⁰ / ^C	31' ⁸ / ^B /32' ¹ / ^C	32' ¹ / ^B	31' ⁶ / ^B
Exterior Height ¹	10'10"	10'11"	10'11"	10'11"	10'11"	10'11"
Exterior Width ²	8'5"	8'5"	8'5"	8'5"	8'5"	8'5"
Exterior Storage w/slideout ³ (cu. ft.)	NA	NA	80.3	79.6	33.1	28
Exterior Storage w/o slideout ³ (cu. ft.)	18.8	36.2	74.6	NA	NA	NA
Awning Length	11'6"	11'6"	14'	16'	10'6"	16'
Interior Height	6'8"	6'8"	6'10"	6'10"	6'8"	6'10"
Interior Width	8'0"	8'0"	8'0"	8'0"	8'0"	8'0"
Freshwater Capacity w/Heater ⁴ (gal.)	33	42	42	42	42	34
Holding Tank Capacity - Black/Gray ⁴ (gal.)	32/39	39/29	41/41	41/41	30/39	47/45
LP Capacity ⁵ (gal.)	18	18	18	18	18	18
Fuel Capacity (gal.)	37	55	55	55	55	55
GCWR ⁶ (lbs.)	18,500 ^A	18,500 ^A /20,000 ^B /17,600 ^C	20,000 ^B /17,600 ^C	20,000 ^B /17,600 ^C	20,000 ^B	20,000 ^B
GVWR (lbs.)	11,500 ^A	11,500 ^A /14,500 ^B /14,050 ^C	14,500 ^B /14,050 ^C	14,500 ^B /14,050 ^C	14,500 ^B	14,500 ^B
GAWR - Front (lbs.)	4,600 ^A	4,600 ^A /5,000 ^B /4,600 ^C	5,000 ^B /4,600 ^C	5,000 ^B /4,600 ^C	5,000 ^B	5,000 ^B
GAWR - Rear (lbs.)	7,800 ^A	7,800 ^A /9,500 ^B /9,450 ^C	9,500 ^B /9,450 ^C	9,500 ^B /9,450 ^C	9,500 ^B	9,500 ^B
Wheelbase	138" ^A	158" ^A /158" ^B /159" ^C	190" ^B /191" ^C	220" ^B /221" ^C	220" ^B	215" ^B

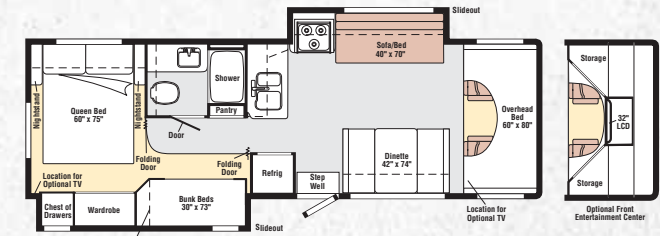
A Ford E350 Chassis **B** Ford E450 Chassis **C** Chevrolet Chassis * 6'4" rear



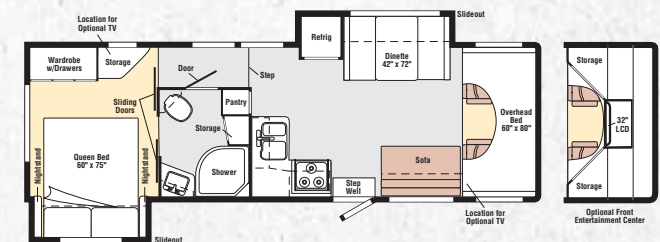
29T



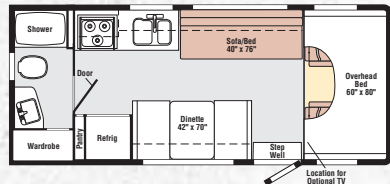
31C



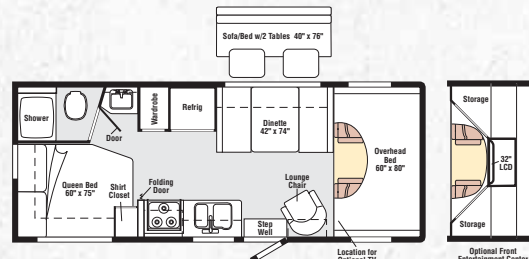
31J



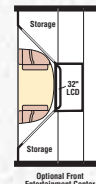
31N
new



22B



24V



Optional Front Entertainment Center

Chassis

Ford® E350 chassis (22B & 24V)

- 255-hp 5.4L Super-Duty V8 SEFI engine
- TorqShift™ 5-speed automatic transmission
- 115-amp. alternator

Ford E450 chassis (29T, 31C, 31J & 31N)

- 305-hp 6.8L Super-Duty V10 SEFI engine
- TorqShift 5-speed automatic transmission
- 115-amp. alternator

4-wheel ABS

7-pin trailer wiring

Trailer hitch⁶: 5,000-lb. drawbar/350-lbs. max vertical tongue weight (Ford chassis)

Trailer hitch⁶: 3,500-lb. drawbar/350-lbs. max vertical tongue weight (Chevy® chassis)

Stainless steel wheel covers

22B	24V	29T	31C	31J	31N	Optional Equipment
	o					Ford E450 chassis
						• 305-hp 6.8L Super-Duty V10 SEFI engine
						• TorqShift 5-speed automatic transmission
						• 115-amp. alternator
	o	o	o			Chevrolet® chassis
						• 300-hp 6.0L Vortec™ V8 engine
						• 4-speed automatic transmission
						• tow/haul mode switch
						• 145-amp. alternator
o	o	o	o	o	o	Stainless steel wheel liners

Cab Conveniences

Fabric cab seats w/armrests, lumbar support, multi-adjustable slide/recline

AM/FM radio/CD player

Cruise control

Tilt steering wheel

Power door locks

Sunvisors

22B	24V	29T	31C	31J	31N	Optional Equipment
o	o	o	o	o	o	Rearview monitor system
o	o	o	o	o	o	Power mirrors w/defrost
o	o	o	o	o	o	Dash appliqué

Interior

Overhead bunk with foam mattress, ladder

Privacy curtain

Amplified TV antenna system

Satellite system ready

Pleated blinds in lounge, dinette and bedroom

Systems monitor panel

Roof vent(s)

Vinyl floorcovering throughout (22B & 24V)

Optional Equipment

22B	24V	29T	31C	31J	31N	Optional Equipment
o	o	o	o	o	o	Upgrade Package: range backsplash, select overhead cabinet doors w/glass inserts, decorative light in dinette area, picture (29T & 31J), range cover, Titanium Touch™ stainless finish refrigerator door inserts, sink covers (2), sofa throw pillows (2), bunk pillow shams w/pillows (2) on 31J
o	o	o	o	o	o	19" DC LCD TV w/DVD player and video selection system in front bunk area
o	o	o	o	o	o	Carpet in lounge and dining area
o	o	o	o	o	o	32" LCD TV w/DVD player and video selection system in front entertainment center
o	o	o	o	o	o	Home theater sound system w/DVD player
o	o	o	o	o	o	Vinyl floorcovering throughout, excludes cab, stepwell and slide-out room

Galley

Laminate countertops

2-door Norcold® refrigerator/freezer

Microwave oven

3-burner range top w/storage below

Vented range hood

Mini blinds

22B	24V	29T	31C	31J	31N	Optional Equipment
o	o	o	o	o	o	3-burner range w/oven

Bedroom

Queen innerspring mattress (NA 22B)

Bunk beds with foam mattresses and privacy curtain (31J)

22B	24V	29T	31C	31J	31N	Optional Equipment
o	o	o	o	o	o	15" DC LCD TV, removable
o	o	o	o	o	o	19" DC LCD TV, removable
o	o	o	o	o	o	8.5" LCD monitors (2) w/DVD and headphones in bunks

Bath

Laminate countertop

Retractable screen shower door (NA 31N)

Flexible showerhead

Powered roof vent

Skylight

Mini blinds

Optional Equipment

Textured glass shower door

Exterior

Manual entrance step

Rear mud flaps

Rotocast compartments w/drain plug (29T & 31C)

Optional Equipment

Automatic entrance step

Patio awning

Accessory Package:
rubber-tread stepwell, ladder, painted running boards, storage compartment cover (29T & 31C), storage compartment cover/folding leg table (29T & 31C)

Heating and Cooling System

13,500 BTU roof air conditioner

25,000 BTU low-profile furnace (22B & 24V)

30,000 BTU low-profile furnace (29T, 31C, 31J & 31N)

22B	24V	29T	31C	31J	31N	Optional Equipment
		o	o	o	o	14,800 BTU roof air conditioner

Electrical System

AC/DC load center, DC fuses, 120V AC circuit breakers, 45-amp. converter/charger

Generator prep kit

25' 30-amp. power cord

Deep-cycle, Group 31 battery

Battery disconnect system

Auxiliary start circuit

Automatic dual battery charge control

22B	24V	29T	31C	31J	31N	Optional Equipment
o	o	o	o	o	o	4,000-watt Cummins Onan® MicroQuiet™ gas generator
o	o	o	o	o	o	Additional deep-cycle, Group 31 battery

Plumbing System

City water hook-up

Water tank fill with lockable door

Water pump

6-gallon water heater

Winterization package: water heater bypass valve and siphon tube

TrueLevel™ holding tank monitoring system

Manual dump valve

Sewer hose

LP tank

22B	24V	29T	31C	31J	31N	Optional Equipment
o	o	o	o	o	o	Heated electric drainage system
o	o	o	o	o	o	6-gallon water heater w/EMS

Safety

Seat belts

Dual airbags

Child seat anchor

LP, smoke and carbon monoxide detectors

10 BC fire extinguisher

Ground fault interrupter

High-mount brake lights

Warranty⁷

**12-month/15,000-mile basic warranty,⁸
36-month/36,000-mile limited warranty on structure,⁸ 10-year limited parts and labor warranty on roof skin⁸**

- The height of each model is measured to the top of the tallest standard feature and is based on the curb weight of a typically equipped unit. The actual height of your vehicle may vary by several inches depending on chassis or equipment variations. Please contact your dealer for further information.
- Access floorplans feature a wide-body design – over 96". In making your purchase decision, you should be aware that some states restrict access on some or all state roads to 96" in body width. Before making your purchase decision, you should confirm the road usage laws in the states of interest to you.
- The load capacity of your motor home is designated by weight, not by volume, so you cannot necessarily use all available space when loading your motor home.
- Capacities are based on measurements prior to tank installation. Slight capacity variations can result due to installation applications.
- Capacities shown are tank manufacturer's listed water capacity (W.C.). Actual filled LP capacity is 80% of listing due to overfilling prevention device on tank.
- Actual towing capacity is dependent on your particular loading and towing circumstances which includes the GVWR, GAWR, and GCWR as well as adequate trailer brakes. Please refer to the Operator's Manual of your vehicle for further towing information.
- See separate chassis warranty.
- See your dealer for complete warranty information.

o Optional
NA Not Available

Not all items available in combination. See dealer for details.

Winnnebago Industries® continuing program of product improvement makes specifications, equipment, model availability, and prices subject to change without notice. Comparisons to other motor homes are based on the most recent information available at printing.



Built by Winnebago Industries. Built to last.

Winnebago motor homes are built by Winnebago Industries, the company that defined motor homes. The company that built its reputation on quality construction. The company that transformed the motor home concept into a way of life.



Today, Winnebago Industries brings that reputation for quality and its 50-year history of RV innovation to the design and construction of

WEB every motor home. It's all a part of SuperStructure®, our exclusive system of proprietary structural components that instills each motor home with improved strength and durability.

Solid Foundation Steel and aluminum truss work provides a solid, flat foundation for the floor and sidewalls. Winnebago Industries' engineers also take special care to distribute the weight of components to ensure proper handling and stability.



Interlocking Joints

The floor, sidewalls and roof are all integrally connected using interlocking joints. This creates an Access body that acts as a cohesive unit for improved strength and durability.

Attention to Detail Whether it's sending every Access through a high-pressure water tunnel to check for leaks or labeling individual wires and barcoding parts to save time and frustration during service, Winnebago Industries considers every detail to ensure your Winnebago motor home provides you with years of pleasure.

Strong as Steel Appliances are secured directly to embedded steel plates for added safety.

E-Coating Winnebago Industries employs an automotive-style dip tank process to apply an advanced electrodeposition coating on critical steel components for corrosion protection.

Thermo-Panel® Sidewalls Invented by Winnebago Industries, Thermo-Panel construction combines a fiberglass panel, high-density, block-foam insulation and aluminum support structures to create some of the most durable, lightweight sidewalls in the industry.



1-year-old Winnebago fiberglass roof



1-year-old competitor's rubber roof

Fiberglass Roof The Access features a crowned, one-piece fiberglass roof, backed with a 10-year limited parts-and-labor roof skin warranty. Fiberglass offers superior strength, attractiveness and durability over the rubber roofs found on many competitive models which can chalk, streak and degrade over time. Fiberglass also provides increased puncture and tear resistance.



gowinnebago.com Visit us on the web for more info on all of our motor homes, the latest product updates and a host of web-exclusive content.



Take a Tour We're proud of our process, state-of-the-art facilities and the people who make Winnebago Industries number one. We invite you to visit our complex in Forest City, Iowa, for a first-hand look at the dedication and technology behind every motor home we build.



Recognized Quality The Recreation Vehicle Dealer Association annually rates RV manufacturers and awards the Quality Circle award to manufacturers who provide exceptional products, service and support. Winnebago Industries is proud to be the only manufacturer to receive this award every year since its inception.



Committed to Service We back our motor homes with the industry's best service after the sale.

- 12-month/15,000-mile basic limited warranty
- 36-month/36,000-mile warranty on structure
- Standard 10-year limited parts-and-labor roof skin warranty
- Complimentary 24-hour roadside assistance program

- RV Technical Assistance Hotline
- RV Service Appointment Assistance
- Emergency Trip Interruption
- Emergency Message Service
- Nationwide Trip Routing
- Fee-Free Travelers Cheques



- TripSaver Fast Track Parts. TripSaver guarantees that in-stock warranty parts ship directly to your dealer within 24 hours.
- National dealer service network



WIT Club Winnebago owners are like family. Joining the Winnebago-Itasca Travelers is a great way to meet and travel with other Winnebago enthusiasts. Members enjoy:

- Caravans and rallies
- Local and state group activities
- RV travel benefits

For Sales and Service Information Contact:

Built proudly by



NYSE listing: WGO

Printed in USA

Seat belts are your most important hookup. Always buckle up.

© 2008 Winnebago Industries, Inc