

2009 *Aspect*<sup>®</sup>



# 50 years on the road

Since the first Winnebago Industries RV rolled off the assembly line 50 years ago, the RV lifestyle has grown from a curiosity to a phenomenon. We're proud to have led the way with innovative products, quality construction and a passion for customer satisfaction. Join all of us in the extended Winnebago Industries family as we celebrate 50 years of travel, tailgates and extended weekends.

Standard Graphics



*POLISHED PEWTER*



*SILVER SKY METALLIC*

Full-body Paint



*CHARCOAL*



*ROSEWOOD*

Full-body Paint



*IRON GRAY*



**50** YEARS ON THE ROAD

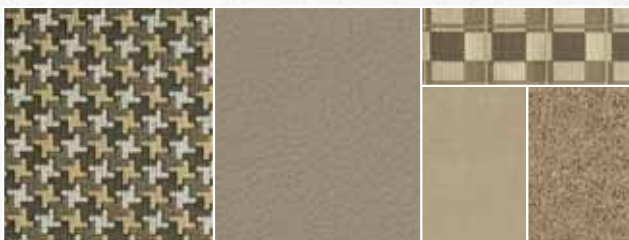
# Interior Decor

Choose from three fabric selections and two cabinet wood choices with satin nickel hardware.

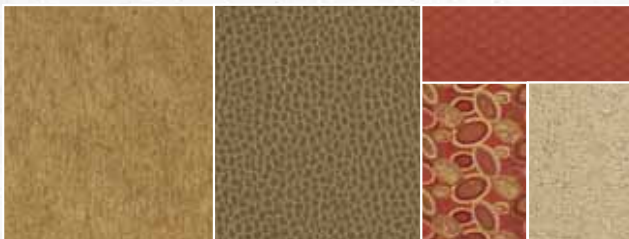
MAIN	ULTRA-LEATHER	BEDSPREAD	
		ACCENT	CARPET
		ACCENT	



*MOONSTONE WITH AVAILABLE PINE CONE ULTRALEATHER*



*SILVERSCREEN WITH AVAILABLE PUTTY ULTRALEATHER*



*CARNIVAL WITH AVAILABLE FIELDS ULTRALEATHER*



*HONEY CHERRY*



*BELMONT MAPLE*



## 2009 *Aspect*<sup>®</sup>

The all-new Winnebago Aspect<sup>®</sup> is one motor home that makes you feel as good as it looks. That's because inside its sleek exterior you can choose from two new multi-slideout floorplans that incorporate the best of Winnebago Industries' SmartSpace<sup>™</sup> design elements that make the most of the interior space. You can also enhance your Aspect with features like UltraLeather<sup>™</sup> and an interior upgrade package that includes a dash and beverage tray appliqué, accent rope lighting, a galley backsplash and day/night pleated window blinds. All this in an easy-to-drive package makes it the perfect touring coach. Make your mark with a 2009 Winnebago Aspect.

## So inviting.

The Aspect gives you every reason to stay in for the night. Its entertainment center boasts a 26" LCD TV and a home theater sound system with a DVD player, 5 speakers and a subwoofer. A video selection system allows you to watch DVDs on the bedroom TV. A King-Dome® in-motion HD-ready satellite system and a 300-watt inverter can also be added.

The galley offers a full complement of appliances, including an Apollo® 3-burner appliances, including an Apollo® 3-burner range, vented range hood and a convection/microwave oven that cooks and browns like a conventional oven in half the time. Beautiful cabinetry and full-extension drawer slides provide ample storage for all of your kitchen tools.

An available skylight/air vent with built-in shade and screen, and available thermo-insulated windows provide added thermal efficiency and climate control.



The **WEB** icon designates a Winnebago Industries Key Feature. For further in-depth information and photos, use the drop-down menu or click on the 'Key Features' page at [gowinnebago.com](http://gowinnebago.com).



**WEB Rest Easy**® Press a button and the available Rest Easy multi-position lounge glides from a sofa to a recliner to a comfortable bed (30C).



**WEB BenchMark** The BenchMark dinette on the 30C features innerspring seats that flip up for easy access to storage. The available Dream Dinette™ table easily adjusts with one hand for quick conversion into a comfortable bed. A U-shaped dinette in the 28B offers exterior access to its bench storage.



**SHOWER** Enjoy a refreshing shower, featuring a flexible showerhead, skylight and curved sliding shower door on the 30C. The 28B features a convenient retractable shower door that squeegees itself clean after use.

## Strike a pose.

New front cap styling helps you stand out from the crowd, especially when you choose one of the available full-body paint schemes. Available stylized aluminum wheels add even more distinction. The 5,000-lb. hitch<sup>5</sup> means you can tow your favorite toys.

Once you're settled, you can remove the available bedroom TV, place it on the exterior mount and stretch out under the available awning to watch the game. The new Group 31 deep-reserve house battery and the available 4,000-watt Cummins Onan® MicroQuiet™ generator provide the power you need when you're in a remote location.

The radio power switch lets you power the cab RV Radio® with CD player and weather band or the available Sirius® satellite radio from the coach batteries when parked. The Sirius package includes an iPod interface cable and comes with a complimentary six-month subscription.

 **WEB** Ideal Rest

**BEDROOM** A rear slideout provides plenty of room for you to relax and enjoy the private bedroom. You may not want to leave once you've settled into the available Ideal Rest™ body-conforming memory foam mattress. From there you can enjoy the available LCD TV, which is wired to the front DVD player so you can watch your favorite movies. A spacious wardrobe holds plenty of clothes for extended trips.



**BATTERY** A new, larger capacity Group 31 battery provides a longer battery reserve. Add a second battery for up to a 44% amp.-hour increase for 2009.



**ENTERTAINMENT CENTER** An available exterior entertainment center includes an AM/FM radio, CD player, remote and table in a lockable compartment.



**EXTERIOR TV** The available bedroom TV can be hung on an exterior bracket when you are relaxing at the campground.



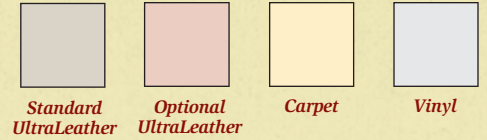
**LEVELING JACKS** Control the available automatic leveling jacks from the entrance door for quick and easy leveling.



**WEB TRUELEVEL** The TrueLevel holding-tank monitoring system uses sonar technology to read liquid levels from outside the tank. There are no probes to corrode or clog, just accurate readings time after time.

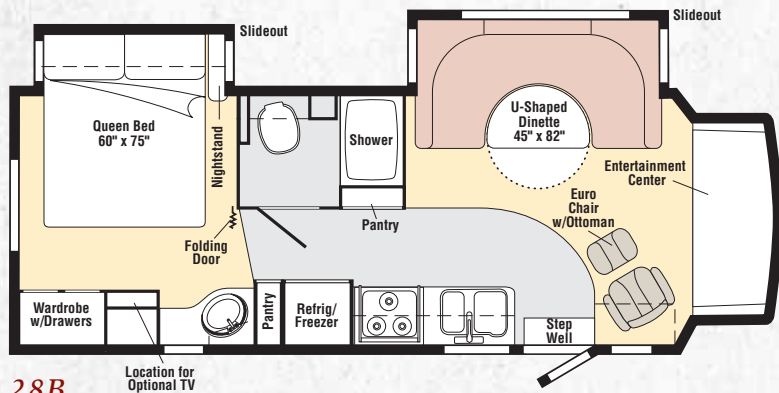
# 2009 *Aspect*® Floorplans & Specifications

Dimensions shown are for sleeping space only and may vary due to styling differences. Dashed lines denote overhead storage areas. Floorplans and specifications are also available online at: [gowinnebago.com](http://gowinnebago.com)



## 28B Weights & Measures

Length	29'7"
Exterior Height <sup>1</sup>	10'5"
Exterior Width	7'11"
Exterior Storage <sup>2</sup> (cu. ft.)	17.8
Awning Length	19'
Interior Height	6'5"
Interior Width	7'6"
Freshwater Capacity w/Heater <sup>3</sup> (gal.)	33
Holding Tank Capacity - Black/Gray <sup>3</sup> (gal.)	27/35
LP Capacity <sup>4</sup> (gal.)	18
Fuel Capacity (gal.)	55
GCWR <sup>5</sup> (lbs.)	20,000
GVWR (lbs.)	14,500
GAWR - Front (lbs.)	5,000
GAWR - Rear (lbs.)	9,500
Wheelbase	200"

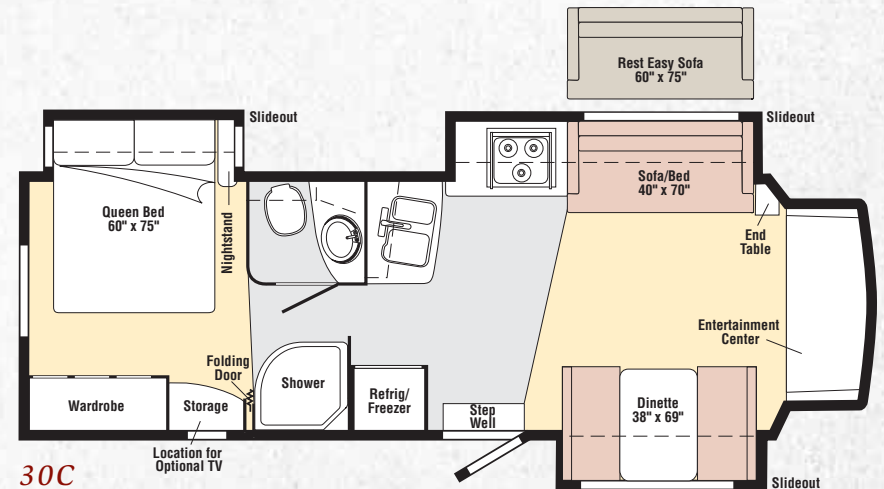


**28B**  
new

Location for  
Optional TV

## 30C Weights & Measures

Length	31'7"
Exterior Height <sup>1</sup>	10'5"
Exterior Width	7'11"
Exterior Storage <sup>2</sup> (cu. ft.)	12.8
Awning Length	14'
Interior Height	6'5"
Interior Width	7'6"
Freshwater Capacity w/Heater <sup>3</sup> (gal.)	33
Holding Tank Capacity - Black/Gray <sup>3</sup> (gal.)	27/35
LP Capacity <sup>4</sup> (gal.)	18
Fuel Capacity (gal.)	55
GCWR <sup>5</sup> (lbs.)	20,000
GVWR (lbs.)	14,500
GAWR - Front (lbs.)	5,000
GAWR - Rear (lbs.)	9,500
Wheelbase	220"



**30C**  
new

Location for  
Optional TV



## Ford® E450 Chassis

305-hp 6.8L Super-Duty V10 SEFI Triton® engine

TorqShift™ 5-speed automatic transmission

115-amp. alternator

4-wheel ABS

Trailer Hitch<sup>5</sup>: 5,000-lb. drawbar/350 lbs. maximum vertical tongue weight and wiring w/7-pin connector

Stainless steel wheel liners

### **Optional Equipment**

- Rear auxiliary air springs
- Automatic hydraulic leveling jacks (front and rear)
- Stylized aluminum wheels

## Cab Conveniences

Cab seats w/armrests, lumbar support, multi-adjustable slide/recline

RV Radio<sup>®</sup>: AM/FM stereo, CD player, weather band, iPod/MP3 input, 2 remotes

Chassis/house battery radio power switch

Tilt steering wheel

Cruise control

Power door locks

Sunvisors

### **Optional Equipment**

- UltraLeather™ cab seats
- Rearview monitor system and one-way audio
- Sirius® satellite radio w/6-month pre-paid subscription and iPod interface cable connector
- Power exterior mirrors w/defrost

## Interior

Home Theater Sound System: amplifier, receiver, DVD player, 5 speakers, subwoofer

26" LCD TV

Satellite system ready

Video selection system

Cab divider curtain

Pleated shades

Systems monitor panel

Roof vent

### **Optional Equipment**

- Skylight w/sliding screen, shade and vent
- Interior Upgrade Package: rope lighting, range backsplash, dash and beverage tray appliqué, UltraLeather BenchMark® w/Dream Dinette™ adjustable table (NA 28B), carpet floor mats in the cab, 2 galley sink covers, refrigerator door upgrade insert, 2 sofa throw pillows (NA 28B), picture, pleated day/night blinds in the lounge, dinette and bedroom
- Dual-glazed, thermo-insulated windows
- 300-watt AC/DC inverter
- Satellite dish antenna system
- King-Dome® HD-ready in-motion satellite dish antenna system w/elevation sensing unit

## Galley

Laminate countertops

2-door refrigerator/freezer

Apollo® 3-burner range top and convection/microwave oven

Vented range hood

Mini blinds

### **Optional Equipment**

- Filtered water system

## Bedroom

Innerspring mattress

Pleated shades

Roof vent

### **Optional Equipment**

- Ideal Rest™ memory foam mattress
- Portable 20" LCD TV
- Powered roof vent
- Portable 15" LCD TV, DC

## Bath

Laminate countertop

Skylight

Powered roof vent

Mini blinds

## Exterior

Ladder

Entrance step

Storage compartments

### **Optional Equipment**

- Entertainment Center: AM/FM stereo, CD player w/remote, DC and AC receptacles, TV jack, lockable compartment, radio antenna, removable table
- Automatic entrance step
- Premium high-gloss skin
- Vinyl patio awning
- Acrylic patio awning (w/full-body paint)

## Heating & Cooling System

13,500 BTU roof air conditioner

30,000 BTU low-profile furnace

### **Optional Equipment**

- A/C heat pump

## Electrical System

AC/DC load center, DC fuses, 120V AC circuit breakers, 45-amp. converter/charger

Service Center: 30-amp. 25' power cord, cable TV input, portable satellite dish hook-up

Battery disconnect system (coach)

Automatic dual battery charge control

Auxiliary start circuit

Deep-cycle, Group 31 battery

### **Optional Equipment**

- 4,000-watt Cummins Onan® MicroQuiet™ gas generator
- 2 deep-cycle, Group 31 batteries

## Plumbing System

Service Center: city water hook-up w/diverter valve, drainage valves, 10' sewer hose

6-gallon water heater

TrueLevel™ holding-tank monitoring system

Winterization package: water heater bypass valve and siphon tube

LP tank

Heated holding-tank compartment

### **Optional Equipment**

- Exterior wash station w/pump switch
- 6-gallon water heater w/EMS system

## Safety

Seat belts

Child seat anchor (dinette)

LP, smoke and carbon monoxide detectors

10 BC fire extinguisher

Ground fault interrupter

High-mount brake lights

## Warranty<sup>6</sup>

12-month/15,000-mile basic warranty,  
36-month/36,000-mile limited warranty on structure,  
10-year limited parts-and-labor warranty on roof skin<sup>7</sup>

- 1 The height of each model is measured to the top of the tallest standard feature and is based on the curb weight of a typically equipped unit. The actual height of your vehicle may vary by several inches depending on chassis or equipment variations. Please contact your dealer for further information.
- 2 The load capacity of your motor home is designated by weight, not by volume, so you cannot necessarily use all available space when loading your motor home.
- 3 Capacities are based on measurements prior to tank installation. Slight capacity variations can result due to installation applications.
- 4 Capacities shown are tank manufacturer's listed water capacity (W.C.). Actual filled LP capacity is 80% of listing due to overfilling prevention device on tank.
- 5 Actual towing capacity is dependent on your particular loading and towing circumstances which includes the GVWR, GAWR, and GCWR as well as adequate trailer brakes. Please refer to the Operator's Manual of your vehicle for further towing information.
- 6 See separate chassis warranty.
- 7 See your dealer for complete warranty information.

Optional

NA Not Available

Not all items available in combination. See dealer for details.

Winnebago Industries® continuing program of product improvement makes specifications, equipment, model availability, and prices subject to change without notice. Comparisons to other motor homes are based on the most recent information available at printing.



# Built by Winnebago Industries. Built to last.

Winnebago motor homes are built by Winnebago Industries, the company that defined motor homes. The company that built its reputation on quality construction. The company that transformed the motor home concept into a way of life.



Today, Winnebago Industries brings that reputation for quality and its 50-year history of RV innovation to the design and construction of every motor home. It's all a part of SuperStructure®, our exclusive system of proprietary structural components that instills each motor home with improved strength and durability.

**Solid Foundation** Steel and aluminum truss work provides a solid, flat foundation for the floor and sidewalls. Winnebago Industries engineers also take special care to distribute the weight of components to ensure proper handling and stability.



### Interlocking Joints

The floor, sidewalls and roof are all integrally connected using interlocking joints. This creates an Aspect body that acts as a cohesive unit for improved strength and durability.

**Attention to Detail** Whether it's sending every Aspect through a high-pressure water tunnel to check for leaks or labeling individual wires and barcoding parts to save time and frustration during service, Winnebago Industries considers every detail to ensure your Winnebago motor home provides you with years of pleasure.

**Strong as Steel** Appliances are secured directly to embedded steel plates for added safety.

**E-Coating** Winnebago Industries employs an automotive-style dip tank process to apply an advanced electrodeposition coating on critical steel components for corrosion protection.

**Thermo-Panel® Sidewalls** Invented by Winnebago Industries, Thermo-Panel construction combines a fiberglass panel, high-density, block-foam insulation and aluminum support structures to create some of the most durable, lightweight sidewalls in the industry.



1-year-old Winnebago fiberglass roof



1-year-old competitor's rubber roof

**Fiberglass Roof** The Aspect features a crowned, one-piece fiberglass roof, backed with a 10-year limited parts-and-labor roof skin warranty. Fiberglass offers superior strength, attractiveness and durability over the rubber roofs found on many competitive models which can chalk, streak and degrade over time. Fiberglass also provides increased puncture and tear resistance.



[gowinnebago.com](http://gowinnebago.com) Visit us on the web for more info on all of our motor homes, the latest product updates and a host of web-exclusive content.



**Take a Tour** We're proud of our process, state-of-the-art facilities and the people who make Winnebago Industries number one. We invite you to visit our complex in Forest City, Iowa, for a first-hand look at the dedication and technology behind every motor home we build.



**Recognized Quality** The Recreation Vehicle Dealer Association annually rates RV manufacturers and awards the Quality Circle award to manufacturers who provide exceptional products, service and support. Winnebago Industries is proud to be the only manufacturer to receive this award every year since its inception.



**Committed to Service** We back our motor homes with the industry's best service after the sale.

- 12-month/15,000-mile basic limited warranty
- 36-month/36,000-mile warranty on structure
- Standard 10-year limited parts-and-labor roof skin warranty
- Complimentary 24-hour roadside assistance program

- RV Technical Assistance Hotline
- Emergency Trip Interruption
- Nationwide Trip Routing
- RV Service Appointment Assistance
- Emergency Message Service
- Fee-Free Travelers Cheques



- TripSaver Fast Track Parts. TripSaver guarantees that in-stock warranty parts ship directly to your dealer within 24 hours.
- National dealer service network



**WIT Club** Winnebago owners are like family. Joining the Winnebago-Itasca Travelers is a great way to meet and travel with other Winnebago enthusiasts. Members enjoy:

- Caravans and rallies
- Local and state group activities
- RV travel benefits

For Sales and Service Information Contact:

Built proudly by



NYSE listing: WGO

Printed in USA

Seat belts are your most important hookup. Always buckle up.

© 2008 Winnebago Industries, Inc.