


20 Sunova® 09



What are your dreams?

Have you imagined yourself seeking new adventures? King of the road, traveling from city to city, coast to coast in comfort and style? The open road is calling your name and it's ready for adventure. The time for dreaming is over. The time for doing is now. Make your motor home dream a reality and do it without breaking the bank in your very own *Itasca Sunova*®.

The  **ITASCA** *Difference* ITASCA MOTOR HOMES ARE BUILT ON AN EXCLUSIVE SUPERSTRUCTURE FOUNDATION TO CREATE SOME OF THE INDUSTRY'S STRONGEST, MOST DURABLE MOTOR HOMES. QUALITY COMPONENTS, A 50-YEAR HISTORY OF INNOVATION AND ATTENTION TO DETAIL ALL GO INTO MAKING ITASCA MOTOR HOMES THE BEST IN THE BUSINESS.



Exterior Graphics and Paint

Choose from the standard graphics or upgrade to one of three full-body paint options and stand out from the crowd.

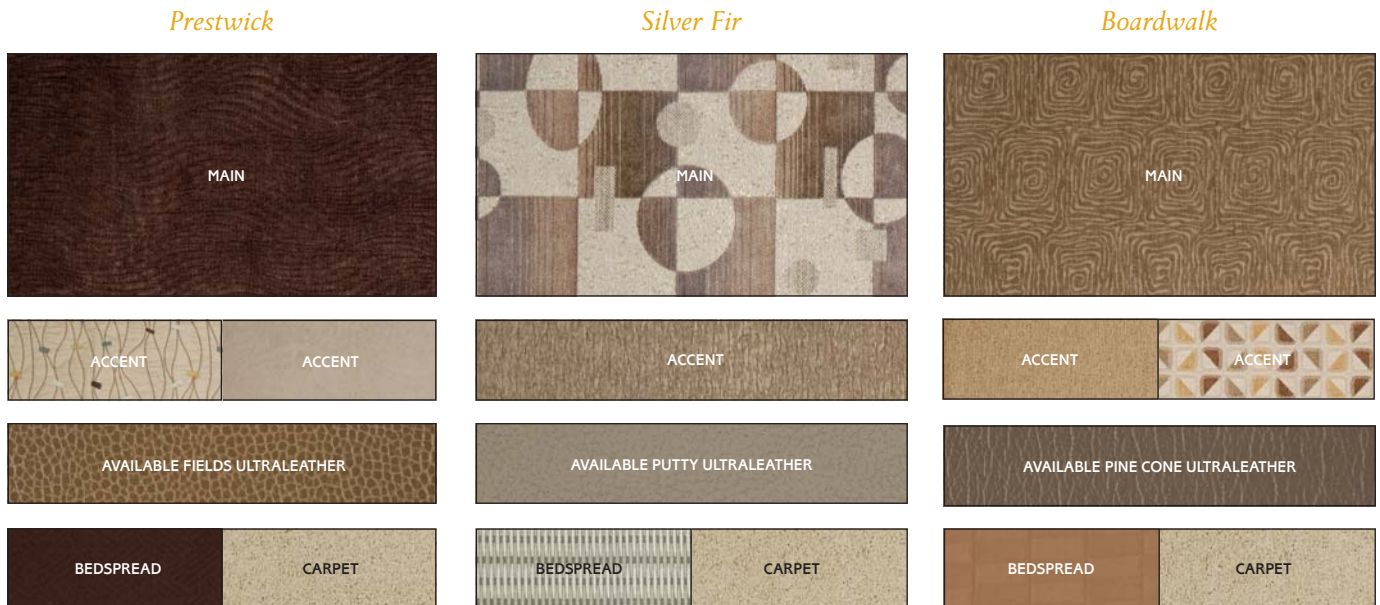


Interior Decor

Three fabric collections and two cabinet woods let you customize your Sunova. Choose the 37L floorplan for traditional-style cabinetry in Honey Cherry. Available UltraLeather fabric provides a soft, stylish alternative that is easier to clean and maintain than leather.



(37L only)





 SMARTSPACE

Welcome to the *Class A lifestyle*

When the Sunova was first introduced, it quickly made a name for itself by delivering Class A comfort at a great value. This year's lineup brings more style, more value and more choices with available full-body paint, available UltraLeather™ furniture and cab seats, and the option to have two LCD TVs in the lounge of the new 31E. Each floorplan is loaded with SmartSpace™ design elements that make the most of every inch. One example is the BenchMark® dinette with innerspring cushions that flip up for convenient storage access. It also quickly converts into a bed and can be upgraded with the Dream Dinette™ table that adjusts easily with just one hand. Find yourself in a 2009 Itasca Sunova and make your Class A dreams come true.





35J Prestwick with Honey Cherry

Lounge & Kitchen Amenities

- 19" LCD TV or available 32" LCD TV (35J & 29R)
- 37" LCD TV (31E & 37L)
- CD/DVD player
- Sofa/sleeper (NA 29R)
- Full-extension drawer slides

All are invited

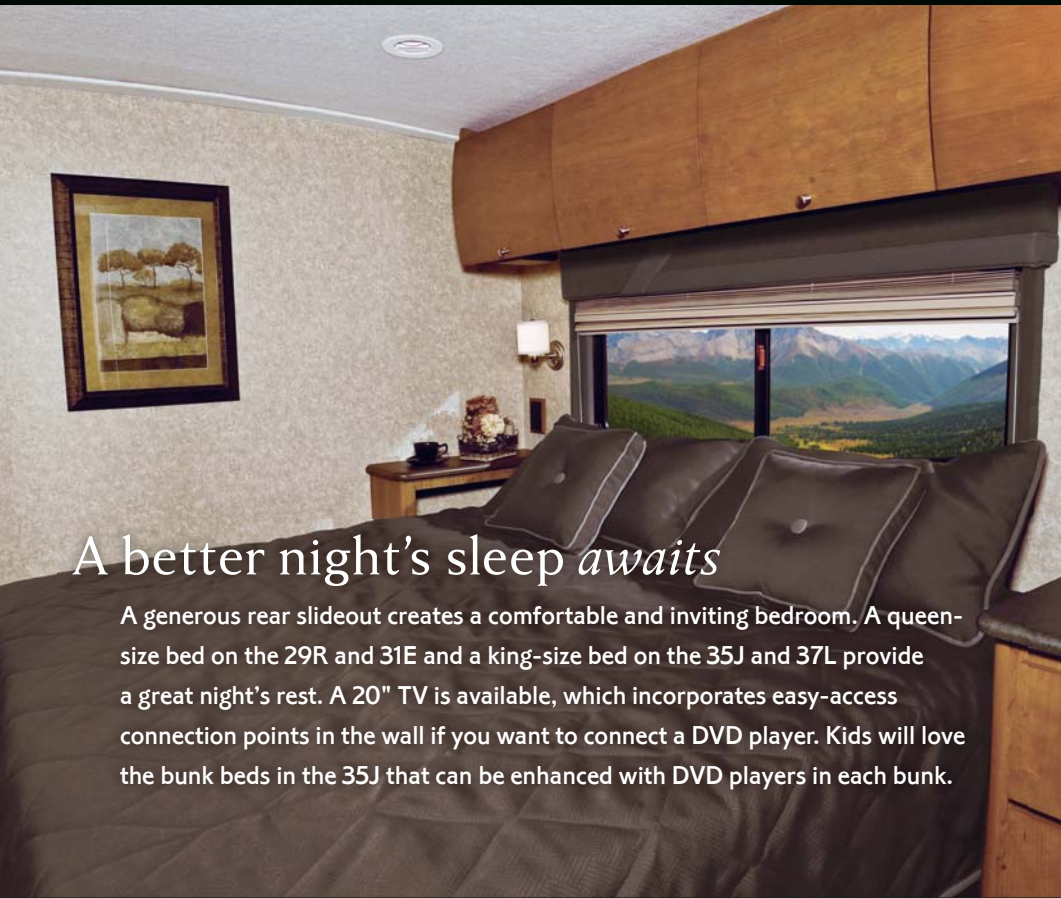
You and your guests will quickly feel at home in your Sunova, thanks to the beautiful curved cabinetry (NA 37L) and comfortable furniture, including the available Euro chair and ottoman on the 31E and 35J. You'll also enjoy the comfort and convenience of the available sofa/sleeper with an air mattress that inflates at the flip of a switch for overnight guests (NA 29R). For your enjoyment, the dash stereo doubles as a CD/DVD player for the overhead entertainment center. It even includes a front video jack so you can connect your video camera and watch home movies. Both the TV and CD/DVD player run on 12-volt power when generator or shoreline power is not available.

Prepare your favorite dishes in a complete kitchen that includes a three-burner range top and a microwave oven. An available interior upgrade package includes accent rope lighting (NA 37L), refrigerator door inserts, a kitchen backsplash, sink covers and the new Dream Dinette™ table top (NA 37L). The bathroom is upgraded for 2009 with a new seamless shower surround and textured glass shower doors (curved on 31E and 37L).





The only manufacturer to receive the RVDA Quality Circle Award for exceptional products, service and support for 11 consecutive years.



A better night's sleep *awaits*

A generous rear slideout creates a comfortable and inviting bedroom. A queen-size bed on the 29R and 31E and a king-size bed on the 35J and 37L provide a great night's rest. A 20" TV is available, which incorporates easy-access connection points in the wall if you want to connect a DVD player. Kids will love the bunk beds in the 35J that can be enhanced with DVD players in each bunk.



35J Prestwick with Honey Cherry

Bed & Bath Amenities

- Underbed storage
- Available 20" TV
- DVD cable-ready
- Bathroom skylight
- Textured glass shower door

More enjoyment The available exterior entertainment center includes AM/FM stereo, a CD player and a removable table. The available side-view cameras let you conveniently see the sides of the coach in the rearview monitor screen.



More features There's abundant storage outside the Sunova with the StoreMore storage compartments that extend with the slideroom for easy access (NA 37L).



STOREMORE®



Spend time *in the great outdoors*

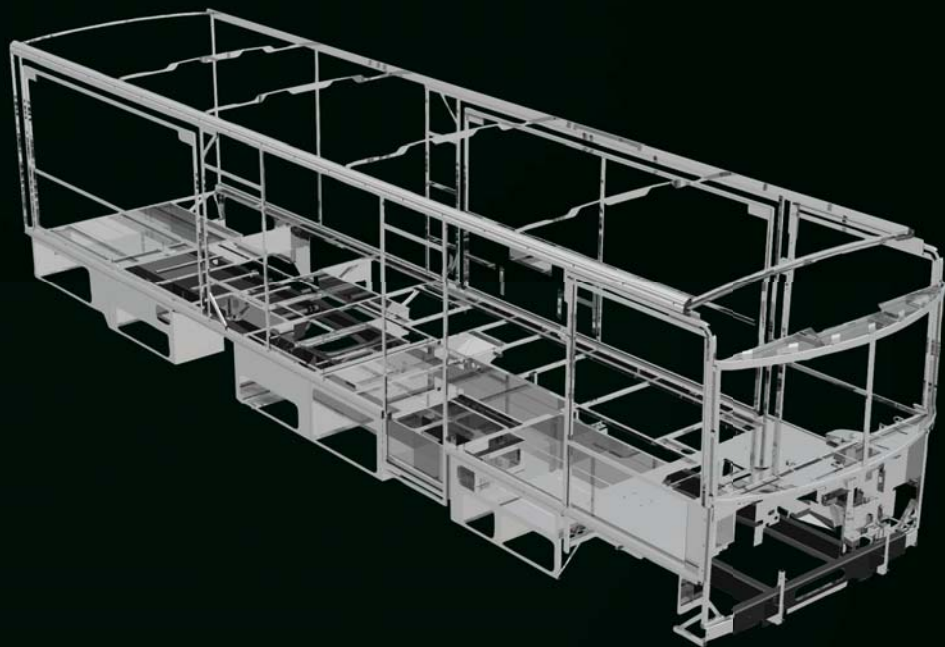
No matter where you travel, you'll find plenty of shade when you select the available patio awning. It offers an excellent complement to the three available full-body paint schemes. Tow up to 5,000-pounds[®] on the standard hitch and ease your way into the campsite using the available power mirrors with defrost as your guide. Leveling the coach is fast and easy with the available hydraulic jack controls in the cab, by the entrance door and in the service bay that let you watch the jacks lower onto the jack pads. Portable power is provided by the 5,500-watt Cummins Onan[®] Marquis Gold™ generator (4,000-watt MicroQuiet™ on the 29R) and two deep-reserve Group 31 batteries that provide up to a 44% amp.-hour increase for 2009.

3 position controls
FOR HYDRAULIC JACKS

SUPER STRUCTURE

SuperStructure Legendary strength and durability are the result of the SuperStructure construction that goes into every Itasca motor home. It's a combination of quality, proprietary components and careful attention to detail that makes Itasca motor homes the cream of the crop.

- Patented Thermo-Panel™ sidewalls are durable and lightweight
- Specially engineered interlocking joints connect the floor, sidewalls and roof together for improved strength and durability
- An automotive-style dip tank applies an advanced electrodeposition coating to protect critical steel components
- The crowned, one-piece fiberglass roof is backed by a 10-year limited parts-and-labor roof skin warranty





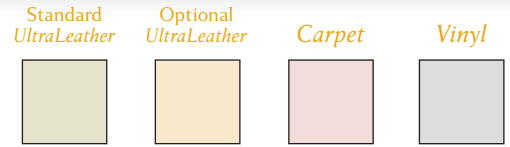
Committed to Service WE BACK OUR MOTOR HOMES WITH THE INDUSTRY'S BEST SERVICE AFTER THE SALE.



- 12-month/15,000-mile basic limited warranty
- 36-month/36,000-mile warranty on structure
- Standard 10-year limited parts-and-labor roof skin warranty
- Complimentary 24-hour roadside assistance program
 - RV Technical Assistance Hotline
 - RV Service Appointment Assistance
 - Emergency Trip Interruption
 - Emergency Message Service
 - Nationwide Trip Routing
 - Fee-Free Travelers Cheques

2009 Sunova Floorplans & Specifications

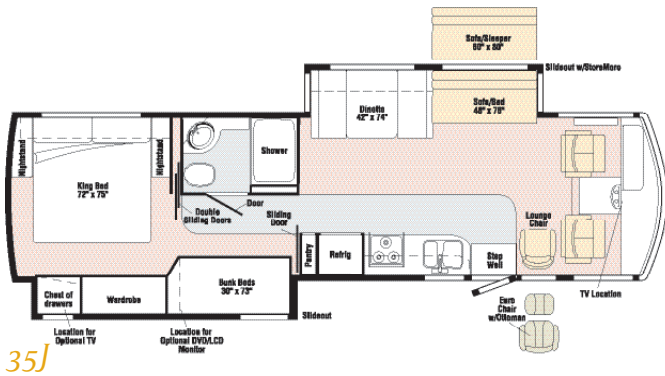
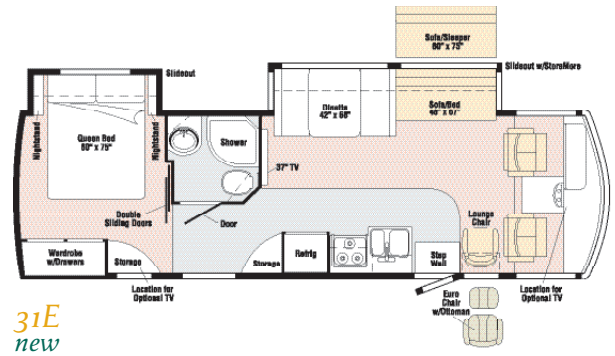
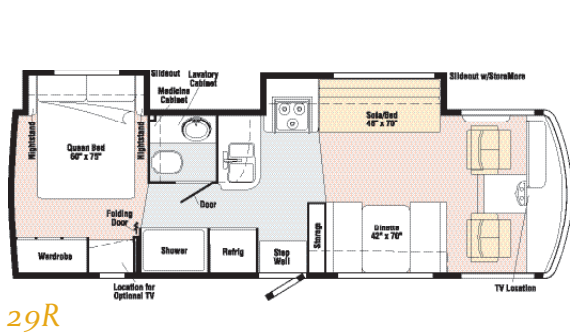
Dimensions shown are for sleeping space only and may vary due to styling differences. Dashed lines denote overhead storage areas. Floorplans and specifications are also available online at: goitasca.com



Weights & Measures

	29R	31E	35J	37L
Length	29'9"	32'4"	35'3"	38'
Exterior Height ¹	12'3"	12'3"	12'3"	12'5"
Exterior Width ²	8'5"	8'5"	8'5"	8'5"
Exterior Storage ³ (cu. ft.)	77.5	85.9	101.8	109
Awning Length - Front/Rear	16'	14'	14'	11'6"/17'
Interior Height	6'8"	6'8"	6'8"	6'8"
Interior Width	8'	8'	8'	8'
Freshwater Capacity w/Heater ⁴ (gal.)	84	84	75	70
Holding Tank Capacity - Black/Gray ⁴ (gal.)	37/41	38/44	44/48	47/42
LP Capacity ⁵ (gal.)	18	18	18	18
Fuel Capacity (gal.)	75	75	75	75
GCWR ⁶ (lbs.)	26,000 ^A /22,000 ^B	26,000 ^A /26,000 ^C	26,000 ^A /26,000 ^A /26,000 ^C	26,000 ^A /26,000 ^C
GVWR (lbs.)	18,000 ^A /18,000 ^B	22,000 ^A /22,000 ^C	20,500 ^A /22,000 ^{A*} /22,000 ^C	22,000 ^A /22,000 ^C
GAWR - Front (lbs.)	7,000 ^A /7,000 ^B	7,500 ^A /7,500 ^C	7,500 ^A /7,500 ^A /7,500 ^C	7,500 ^A /7,500 ^C
GAWR - Rear (lbs.)	11,000 ^A /12,000 ^B	14,500 ^A /14,500 ^C	13,500 ^A /14,500 ^{A*} /14,500 ^C	14,500 ^A /14,500 ^C
Wheelbase	190"	208"	228"	248"

A Ford F53 Chassis B Workhorse W18 Chassis C Workhorse W22 Chassis * Running line change



Available November 2008

What's on the Web?

Want to see more of the Itasca Sunova? You'll find more pictures, in-depth info, floorplans, and complete specs at goitasca.com. You'll also see videos and highlights of key features, such as:

BenchMark®

3 position controls
FOR HYDRAULIC JACKS

TRUELEVEL

SMARTSPACE

QuickPort

POWERLINE®

SMART STORAGE

ONE PLACE®

**SUPER
STRUCTURE**

STOREMORE

Built proudly by



goitasca.com

NYSE: WGO



Join the  **ITASCA Family** ITASCA OWNERS JUST HAVE MORE FUN. WHEN YOU BUY A SUNOVA YOU CAN BECOME A PART OF THE WINNEBAGO-ITASCA TRAVELERS CLUB. AS A MEMBER, YOU'LL MEET OTHER MOTOR HOME ENTHUSIASTS, TRAVEL TO INTERESTING PLACES WITH INTERESTING PEOPLE, AND BE THE FIRST TO LEARN ABOUT NEW ITASCA PRODUCTS. SEE WHAT THE WIT CLUB IS ALL ABOUT AT WITCLUB.COM



- Join the WIT Club
- Caravans and rallies
- Local and state activities
- RV travel and benefits

For Sales and Service Information Contact:

Seat belts are your most important hookup. Always buckle up.