

20 Suncruiser® 09



The motorhomers' motor home

Vacations are a time for fun and relaxation. They're a place to escape from worry and hassle. Your motor home should be, too. That's why we created the *Itasca Suncruiser*. Through a combination of user feedback and our 50 years of RV experience, every aspect was planned to make it the most user-friendly motor home – both on the road and at the campsite. Enrich your life with the all-new 2009 Itasca Suncruiser.

The  **ITASCA** *Difference* ITASCA MOTOR HOMES ARE BUILT ON AN EXCLUSIVE SUPERSTRUCTURE FOUNDATION TO CREATE SOME OF THE INDUSTRY'S STRONGEST, MOST DURABLE MOTOR HOMES. QUALITY COMPONENTS, A 50-YEAR HISTORY OF INNOVATION AND ATTENTION TO DETAIL ALL GO INTO MAKING ITASCA MOTOR HOMES THE BEST IN THE BUSINESS.



Exterior Paint

Black Knight



Latté



Cayenne



Blue Reflection



Interior Decor

Your choice from three fabric collections makes it easy to select a SunCruiser that perfectly suits your style. Select UltraLeather™ furniture for a soft leather feel that is extra durable and easy to clean. Mission-style cabinetry comes in elegant Concert Cherry, Honey Cherry or Belmont Maple finishes with satin nickel hardware for a warm, inviting interior.

*Concert
Cherry*



*Honey
Cherry*



*Belmont
Maple*



North Star



MAIN



PLAIN ACCENT

PATTERN ACCENT



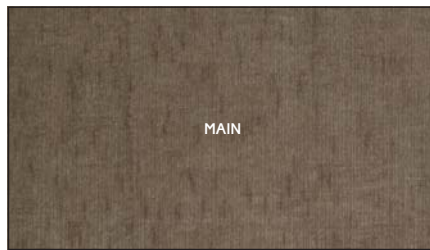
AVAILABLE STEERHIDE ULTRALEATHER



BEDSPREAD

CARPET

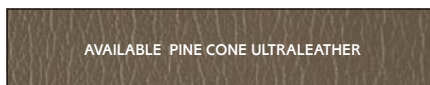
Portabello



MAIN



PATTERN ACCENT



AVAILABLE PINE CONE ULTRALEATHER



BEDSPREAD

CARPET

Stonebriar



MAIN



PLAIN ACCENT

PATTERN ACCENT



AVAILABLE PUTTY ULTRALEATHER



BEDSPREAD

CARPET



Designed with *you in mind*

Travel is an absolute pleasure in a well-planned, smartly designed, nicely appointed 2009 Itasca SunCruiser.[®] Step inside and you'll find updated styling and luxurious amenities, such as available UltraLeather,[™] Corian[®] countertops and thermo-insulated windows, that really make the SunCruiser feel like home. A spacious layout and an impressive storage capacity are made possible by the SmartSpace[™] design philosophy of using the available space to its maximum efficiency. See for yourself why so many owners call the Itasca SunCruiser the most user-friendly motor home they've ever owned.





Sit, relax, *enjoy*

The SunCruiser immediately puts you at ease with residential-style furniture like the Rest Easy® multi-position lounge. It glides from a sofa, to a recliner, to a comfortable bed at the press of a button. The hoop-base chair (35L & 38T) rocks, reclines and can be moved around the coach when you're parked. You can also choose Rest Easy theater seating (NA 35L) with twin, powered recliners that can each convert into a twin bed at the touch of a button. All of the living room furniture is available in UltraLeather for the ultimate in relaxation while you enjoy a fully loaded entertainment center. It comes pre-wired for the available King-Dome® HD satellite system so you can add it now or later at your convenience.



Entertainment Features

- 32" LCD TV (32H & 35L)
- 37" LCD TV (35P & 38T)
- Home theater sound system
- DVD Player
- Available 600-watt inverter
- Video selection system
- Available King-Dome HD satellite dish



Easy *and elegant*

As you enter the kitchen, take note of the Corian® solid-surface countertops and vinyl tile floor. Each provides an easy-to-clean surface that looks great for years. You'll be able to stock plenty of food in the pantry and the available four-door refrigerator/freezer that includes an icemaker.

The BenchMark® full-comfort dinette provides innerspring comfort, includes two easy-to-access storage compartments and features the Dream Dinette™ table for easy, one-handed table adjustments. A U-shaped dinette comes standard on the 32H for additional seating and storage. Both dinettes convert into comfortable sleeping areas for overnight guests.



Kitchen Features

- Amana® range
- Microwave/convection oven
- Corian countertops
- Full-extension drawer slides
- Filtered cold water faucet



The only manufacturer to receive the RVDA Quality Circle Award for exceptional products, service and support for 11 consecutive years.



Sleep it off

Retire for the evening in a large bedroom with a generous slideout and king-size bed in the 35P (available 35L). Upgrade to a Sleep Number® bed by Select Comfort™ for independently adjustable firmness on each side of the bed. Use the available LCD TV to help ease you to sleep or listen to soothing music on the available stereo system with CD/DVD player. You'll also find a spot for the available washer/dryer hidden behind wood doors (NA 32H or 35L w/king bed).



35L Stonebriar with Honey Cherry

Bedroom features

- 20" (32H) or available 26" LCD TV
- Available Sleep Number bed
- Available stereo system
- Cedar-lined wardrobe

sleep  number
by SELECT COMFORT

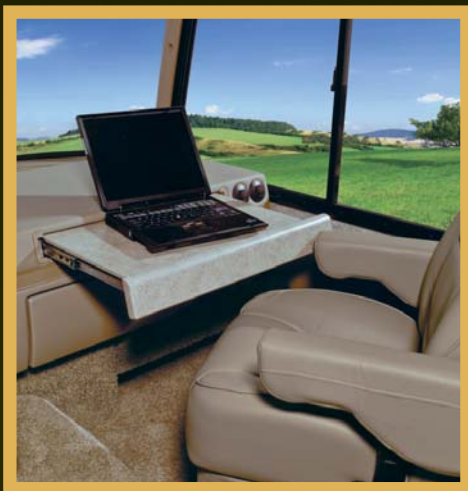


Easy to drive

The Suncruiser gives you confidence behind the wheel with controls close at hand. A one-piece windshield provides a clear view and a rearview monitor with one-way audio provides peace of mind when backing. You can also add side-view video cameras that activate with the turn signals to help you through corners. Of course, you'll do it all from the comfort of an UltraLeather driver's seat with 6-way power adjustments.

The passenger seat also brings the comfort of UltraLeather and the convenience of an in-dash workstation.

While you drive, listen to AM/FM radio or CDs on the RV Radio®. Two remotes give you control from the steering wheel and from the living area. Upgrade to the Sirius® satellite radio package for over 130 channels of digital entertainment. A free six-month subscription is included.



Cab Conveniences

- RV Radio®
- Available Sirius® satellite radio
- Rearview monitor
- Available side-view cameras
- Available power sunvisors
- Window screens





Get there and *enjoy the stay*

Reach your destination and relax with the park-n-play design of the Itasca SunCruiser. An exterior service center with color-coded labels along with the QuickPort service hatch and QuickConnect coupling valve makes connecting at the campsite a snap. Large, pass-through compartments on the 32H and 35P and the abundant StoreMore® compartments on the 35L and 38T that extend with the slideroom give you quick access to everything you need. No shoreline power? No problem with the 5,500-watt Cummins Onan® Marquis Gold™ generator. Large-capacity Group 31 coach batteries let you extend your dry camping. You'll be set up and enjoying the day in no time.

STOREMORE

The SunCruiser has it all From an exterior entertainment center to storage for your chairs, grill and toys, the SunCruiser is loaded with fun.

- AM/FM stereo with CD player
- Color-coded connections
- Wash station
- QuickPort® service hatch
- QuickConnect® coupling valve
- 3 position controls
- Solar panel battery charger



The OnePlace® systems center lets you monitor and control key systems from one convenient location.

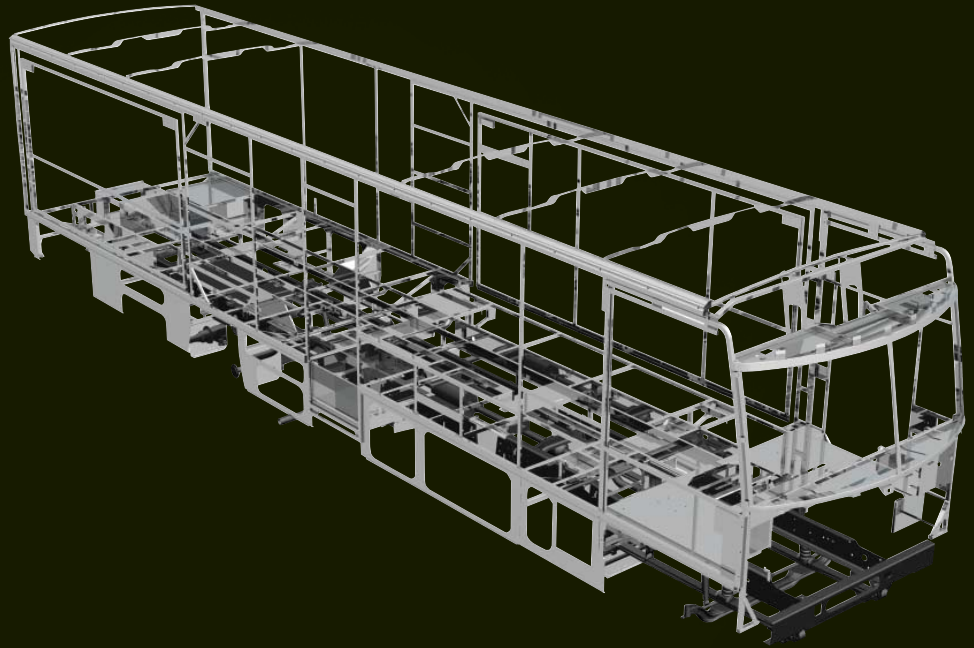
- **TRUEAIR** residential air conditioning with heat pump
- **TRUELEVEL** tank monitors use sonar technology to provide precise readings every time
- **POWERLINE**® energy management system monitors electrical usage and automatically cycles appliances on and off to prevent tripped circuit breakers



SUPER STRUCTURE

SuperStructure. Legendary strength and durability are the results of the SuperStructure construction that goes into every Itasca motor home. It's a combination of quality, proprietary components and careful attention to detail that makes Itasca motor homes the cream of the crop.

- Patented Thermo-Panel™ sidewalls are durable and lightweight
- Specially engineered interlocking joints connect the floor, sidewalls and roof together for improved strength and durability
- An automotive-style dip tank applies an advanced electrodeposition coating to protect critical steel components
- The crowned, one-piece fiberglass roof is backed by a 10-year limited parts-and-labor roof skin warranty



Committed to Service WE BACK OUR MOTOR HOMES WITH THE INDUSTRY'S BEST SERVICE AFTER THE SALE.

- 12-month/15,000-mile basic limited warranty
- 36-month/36,000-mile warranty on structure
- Standard 10-year limited parts-and-labor roof skin warranty
- Complimentary 24-hour roadside assistance program
 - RV Technical Assistance Hotline
 - RV Service Appointment Assistance
 - Emergency Trip Interruption
 - Emergency Message Service
 - Nationwide Trip Routing
 - Fee-Free Travelers Cheques

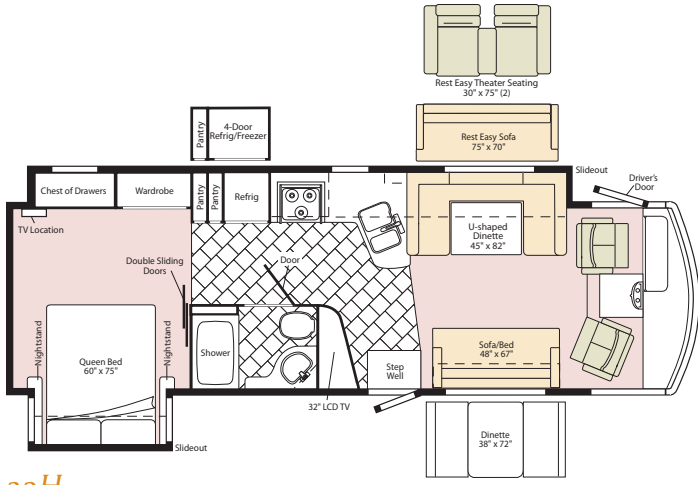
Weights & Measures

| | 32H | 35L | 35P | 38T |
|--|--|---|---|--|
| Length | 32'10" | 35'3" | 35'5" | 38'9" |
| Exterior Height ¹ | 12'3" | 12'3" | 12'3" | 12'3" |
| Exterior Width ² | 8'5" | 8'5" | 8'5" | 8'5" |
| Exterior Storage ³ (cu. ft.) | 72.7 | 78 | 85.9 | 119.4 |
| Awning Length | 16' | 15' | 17' | 13' |
| Interior Height | 7'2" | 7'2" | 7'2" | 7'2" |
| Interior Width | 8' | 8' | 8' | 8' |
| Freshwater Capacity w/Heater ⁴ (gal.) | 85 | 88 | 85 | 88 |
| Holding Tank Capacity - Black/Gray ⁴ (gal.) | 43/48 | 65/53 | 43/60 | 53/70 |
| LP Capacity ⁵ (gal.) | 23 | 28 | 28 | 28 |
| Fuel Capacity (gal.) | 75 | 75 | 75 | 75 |
| GCWR ⁶ (lbs.) | 26,000 ^A /26,000 ^B | 26,000 ^A /30,000 ^{A*} /26,000 ^B /30,000 ^C | 26,000 ^A /30,000 ^{A*} /26,000 ^B /30,000 ^C | 30,000 ^A /30,000 ^C |
| GVWR (lbs.) | 22,000 ^A /22,000 ^B | 22,000 ^A /24,000 ^{A*} /22,000 ^B /24,000 ^C | 22,000 ^A /24,000 ^{A*} /22,000 ^B /24,000 ^C | 24,000 ^A /24,000 ^C |
| GAWR - Front (lbs.) | 7,500 ^A /8,500 ^B | 7,500 ^A /9,000 ^{A*} /8,500 ^B /9,000 ^C | 7,500 ^A /9,000 ^{A*} /8,500 ^B /9,000 ^C | 9,000 ^A /9,000 ^C |
| GAWR - Rear (lbs.) | 14,500 ^A /15,000 ^B | 14,500 ^A /15,500 ^{A*} /15,000 ^B /15,500 ^C | 14,500 ^A /15,500 ^{A*} /15,000 ^B /15,500 ^C | 15,500 ^A /15,500 ^C |
| Wheelbase | 220" | 228" | 228" | 266" |

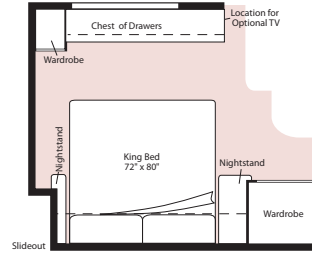
A Ford Chassis A* Optional GVWR B Workhorse W22 Chassis C Workhorse W24 Chassis

2009 Suncruiser Floorplans & Specifications

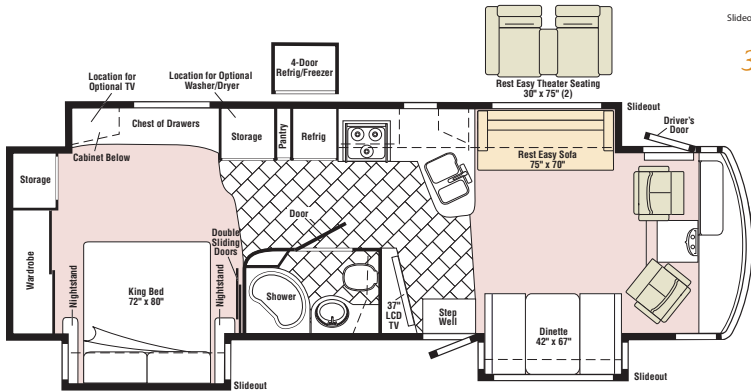
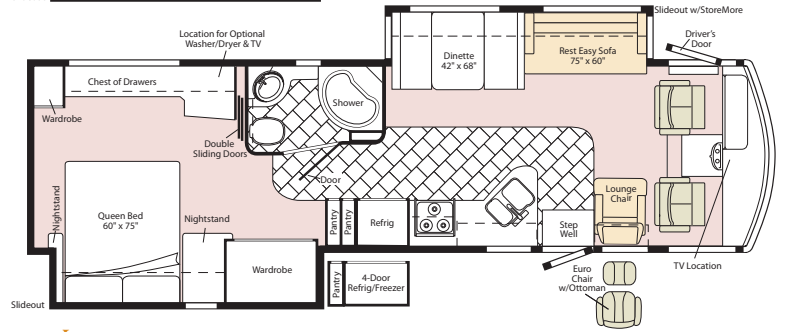
Dimensions shown are for sleeping space only and may vary due to styling differences. Dashed lines denote overhead storage areas. Floorplans and specifications are also available online at: goltasca.com



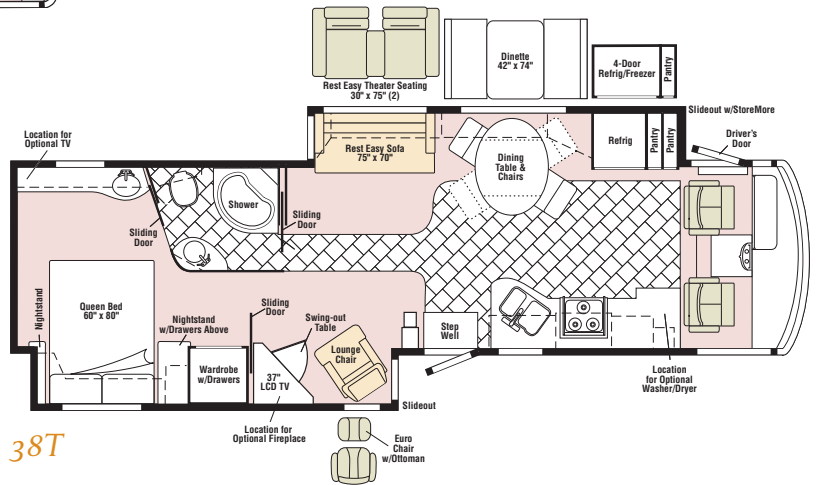
32H



35L



35P
new



38T

Chassis

Ford® chassis

- 362-hp 6.8L Super-Duty V10 SOHC Triton® engine
- 5-speed TorqShift™ transmission
- HydroMax brakes
- 130-amp. alternator

4-wheel ABS

Trailer Hitch²: 5,000 lb. drawbar/500-lbs. maximum capacity tongue weight and wiring

7-pin tow connector

Stylized aluminum wheels

Battery disconnect system (chassis)

Hydraulic leveling jacks with 3-position controls

| 32H | 35L | 35P | 38T |
|-----|-----|-----|-----|
| o | o | o | o |

Optional Equipment

Workhorse™ W22-series chassis

- 340-hp 8.1L GM Vortec V8 engine
- Allison® 1000 MH 6-speed automatic transmission
- 145-amp. alternator

Workhorse W24-series chassis

- 340-hp 8.1L GM Vortec V8 engine
- Allison® 2350 MH 6-speed automatic transmission
- 145-amp. alternator

| 32H | 35L | 35P | 38T |
|-----|-----|-----|-----|
| o | o | o | o |

Cab Conveniences

RV Radio: AM/FM stereo, CD player, weather band and remotes

Chassis/coach battery radio power switch

UltraLeather™ Cab Seats: adjustable armrests, lumbar support, and multi-adjustable recline, swivel/slide

6-way power-assist driver seat pedestal

Rearview monitor w/one-way audio

Cab sound control package

Convenience tray

Cruise control

Map lights

Front wraparound curtain

Tilt power steering

Defroster fans

Sunvisors

Dash workstation

C.B. prep kit

Power mirrors w/defrost and turn signal indicator

| 32H | 35L | 35P | 38T |
|-----|-----|-----|-----|
| o | o | o | o |

Optional Equipment

Sirius® satellite radio w/iPod interface connector (6-month subscription included)

Side-view video camera system

Window shades

Powered sunvisors

Passenger footrest (Ford)

| 32H | 35L | 35P | 38T |
|-----|-----|-----|-----|
| o | o | o | o |

Interior

Home Theater Sound System: amplifier, DVD player, receiver, 5 speakers and subwoofer

32" LCD TV (32H & 35L)

37" LCD TV (35P & 38T)

Video selection system

Satellite system ready

OnePlace® systems center

Day/night pleated shades

Dual-glazed/thermo-insulated windows

| 32H | 35L | 35P | 38T |
|-----|-----|-----|-----|
| o | o | o | o |

Optional Equipment

Winegard RV digital satellite dish

King-Dome® RV digital satellite dish w/automatic elevation sensing unit

King-Dome HD-ready in-motion satellite dish

Washer/dryer combination (NA w/king bed 35L)

Fireplace

| 32H | 35L | 35P | 38T |
|-----|-----|-----|-----|
| o | o | o | o |

Kitchen

Corian® solid-surface countertops

Sharp® stainless steel microwave/convection oven w/vented range fan

Amana® 3-burner range top w/storage below

Norcold® refrigerator/freezer

Powered ventilator fan

Corian sink & range covers

Water filtration system w/separate faucet

Mini blinds

| 32H | 35L | 35P | 38T |
|-----|-----|-----|-----|
| o | o | o | o |

Optional Equipment

Amana 3-burner range w/oven

Norcold refrigerator/freezer w/icemaker

Norcold 4-door refrigerator/freezer w/icemaker

Bath

Flexible showerhead w/Moen® Posi-Temp®

Powered roof vent

Curved shower w/built-in shower seat (NA 32H)

Mini blinds (35L)

| 32H | 35L | 35P | 38T |
|-----|-----|-----|-----|
| o | o | o | o |

Optional Equipment

Fold-down shower seat

Bedroom

Queen bed (32H, 35L & 38T)

King bed (35P)

Innerspring mattress

Underbed storage

20" LCD TV (32H)

DVD cable ready (35L, 35P & 38T)

Hamper (35L & 35P)

Night pleated shades

| 32H | 35L | 35P | 38T |
|-----|-----|-----|-----|
| o | o | o | o |

Optional Equipment

Sleep Number® bed by Select Comfort™

Stereo System: AM/FM radio, CD/DVD player, alarm clock, MP3 input and headphone jack

26" LCD TV

King bed

Exterior

Exterior Entertainment Center: AM/FM radio, CD player, remote, speakers and table in a lockable compartment

Patio awning

TriMark® KeyOne™ lock system

Porch light

Electric door steps

Ladder

Mud flaps

| 32H | 35L | 35P | 38T |
|-----|-----|-----|-----|
| o | o | o | o |

Optional Equipment

Electric patio awning w/wind sensor and remote

Lower front protective mask

2nd patio awning, manual or electric w/wind sensor and remote (16')

Heating & Cooling System

TrueAir® residential central air conditioning

Heat pump

Floor-ducted heating system

35,000 BTU furnace (32H)

40,000 BTU furnace (35L, 35P & 38T)

Electrical System w/QuickPort®

AC/DC distribution system

55-amp. converter/charger

Service Center: cable TV input, power cord, QuickPort hatch, portable satellite dish hookup

5,500-watt Cummins Onan® Marquis Gold™ generator

PowerLine® energy management system

Auxiliary start circuit

Group 31 batteries

Battery disconnect system (coach)

Automatic dual-battery charge control

Generator/shoreline automatic changeover switch

50-amp. power cord

10-watt solar battery charge panel

| 32H | 35L | 35P | 38T |
|-----|-----|-----|-----|
| o | o | o | o |

Optional Equipment

600-watt inverter

Plumbing System w/QuickPort

Service Center: QuickPort hatch, exterior wash station w/pump switch, city water hookup w/diverter valve, drainage valves, 10' sewer hose w/QuickConnect® coupling valve, tank flushing system

TrueLevel™ holding tank monitoring system

10-gallon water heater

LP tank

Motoraid auxiliary water heater

Water System Filtration Package: filter housing, filter, wrench

Water System Winterization Package: water heater bypass valve and siphon tube

Safety

Seat belts

LP, smoke and carbon monoxide detectors

10 BC fire extinguisher

Ground fault interrupter

High-mount brake lamps

Key-activated slideroom master lock switch

Child seat tether anchor in forward-facing dinette

Warranty⁷

**12-month/15,000-mile basic warranty,⁸
36-month/36,000-mile limited warranty on structure,⁸
10-year limited parts and labor warranty on roof skin⁸**

- The height of each model is measured to the top of the tallest standard feature and is based on the curb weight of a typically equipped unit. The actual height of your vehicle may vary by several inches depending on chassis or equipment variations. Please contact your dealer for further information.
- Suncruiser floorplans feature a wide-body design – over 96" in making your purchase decision, you should be aware that some states restrict access on some or all state roads to 96" in body width. Before making your purchase decision, you should confirm the road usage laws in the states of interest to you.
- The load capacity of your motor home is designated by weight, not by volume, so you cannot necessarily use all available space when loading your motor home.
- Capacities are based on measurements prior to tank installation. Slight capacity variations can result due to installation applications.
- Capacities shown are tank manufacturer's listed water capacity (W.C.). Actual filled LP capacity is 80% of listing due to overfilling prevention device on tank.
- Actual towing capacity is dependent on your particular loading and towing circumstances which includes the GVWR, GAWR, and GCWR as well as adequate trailer brakes. Please refer to the Operator's Manual of your vehicle for further towing information.
- See separate chassis warranty.
- See your dealer for complete warranty information.

- o Optional
- NA Not Available

Not all items available in combination. See dealer for details.

Winnebago Industries™ continuing program of product improvement makes specifications, equipment, model availability, and prices subject to change without notice. Comparisons to other motor homes are based on the most recent information available at printing.

What's on the Web?

Want to see more of the Itasca SunCruiser? You'll find more pictures, in-depth info, floorplans, and complete specs at goitasca.com. You'll also see videos and highlights of key features, such as:

BenchMark®

sleep  number.
by SELECT COMFORT

TRUELEVEL

REST EASY®

 Quick
CONNECT

TRUEAIR

SIRIUS 

 QuickPort.

SUPER
STRUCTURE


RV-RADIO

ONE PLACE®

 position controls

 SMARTSPACE®

POWERLINE®

 SMART STORAGE®

STOREMORE


Built proudly by



goitasca.com

NYSE: WGO



Join the  **ITASCA Family** ITASCA OWNERS JUST HAVE MORE FUN. WHEN YOU BUY A SUNCRUISER YOU CAN BECOME A PART OF THE WINNEBAGO-ITASCA TRAVELERS CLUB. AS A MEMBER, YOU'LL MEET OTHER MOTOR HOME ENTHUSIASTS, TRAVEL TO INTERESTING PLACES WITH INTERESTING PEOPLE, AND BE THE FIRST TO LEARN ABOUT NEW ITASCA PRODUCTS. SEE WHAT THE WIT CLUB IS ALL ABOUT AT WITCLUB.COM



- Join the WIT Club
- Caravans and rallies
- Local and state activities
- RV travel and benefits

For Sales and Service Information Contact:

Seat belts are your most important hookup. Always buckle up.