




You're going places

Drive to the coast or head for the hills. The power and comfort of a diesel pusher coach gives you more options and more places to explore. And wherever you go you can always count on the comfort and performance of your *Itasca Meridian*. Make it your guide, your ticket to freedom and your home on the road.

The  **ITASCA** *Difference* ITASCA MOTOR HOMES ARE BUILT ON AN EXCLUSIVE SUPERSTRUCTURE FOUNDATION TO CREATE SOME OF THE INDUSTRY'S STRONGEST, MOST DURABLE MOTOR HOMES. QUALITY COMPONENTS, A 50-YEAR HISTORY OF INNOVATION AND ATTENTION TO DETAIL ALL GO INTO MAKING ITASCA MOTOR HOMES THE BEST IN THE BUSINESS.



Exterior Paint

The Meridian is available in five full-body paint schemes to help you stand out from the crowd.

Silver Cliff



Sedona Bronze



Harvest Night



Dark Vermillion

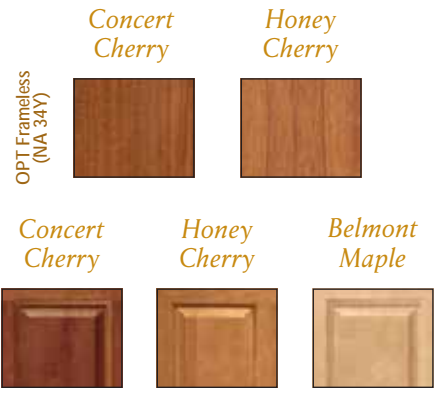


Hazelnut

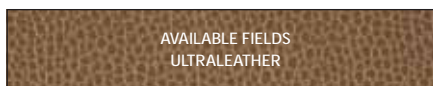


Interior Decor

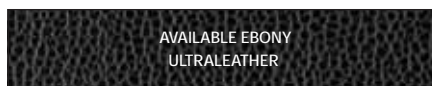
Your choice from three fabric collections makes it easy to find a Meridian that suits your style. Select UltraLeather™ furniture for a soft leather feel that is extra durable and easy to clean. Traditional-style cabinetry is standard or choose the optional frameless design.



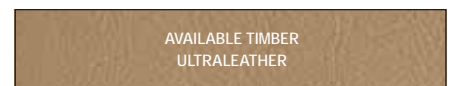
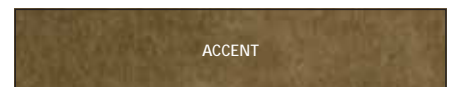
Carmel Canyon



Cinderblock



Breezy Point



On the cover: 39Z Dark Vermillion Full-body Paint



Get *moving*

The style and comfort you deserve are yours in the Itasca Meridian®. The SmartSpace™ design philosophy permeates the coach, employing innovative features and designs to make the best use of space. The new 34Y even incorporates a full-wall slideout to create an incredibly spacious interior you need to see to believe. The 29,410-lb. GVWR Freightliner® XC chassis gets you where you're going with ease, thanks to a 350-hp Cummins® turbo-diesel engine and an Allison® 6-speed transmission. Take the high road, low road and everything in between in comfort in your 2009 Itasca Meridian.





REST EASY®

Interior Highlights

- 37" LCD HDTV
- Home theater sound system
- CD/DVD player
- 2,000-watt inverter
- Day/night pleated shades
- Dual-glazed, thermo-insulated windows

Whatever suits *your style*

Two cabinet styles, your choice of wood and three interior decor selections ensure that your Meridian perfectly reflects your taste and style. Accent rope lighting and easy-to-care-for flooring provide additional decorative touches.

After a day of travel and adventures you can kick back and watch the 37" LCD HDTV. A DVD player is included with the standard home theater sound system that delivers life-like surround sound through five speakers and a subwoofer. For added entertainment options, the Meridian comes pre-wired for the available King-Dome® dual-LNB satellite system that can send programming to two receivers at the same time. You can also add a second TV in the front overhead cabinet for even more viewing options (NA 34Y).

Relax in the adjustable Rest Easy® multi-position lounge that glides from a couch to a recliner to a bed at the press of a button. You can also choose the available Rest Easy theater seating for matching recliners that convert into twin beds.





Your *dream kitchen*

Unleash your inner chef in a kitchen full of popular features and conveniences such as a faucet with a pullout sprayer, a 30" microwave/convection oven and an Amana® three-burner sealed range. Corian® countertops provide an elegant workspace with matching sink and range covers providing even more prep space. You'll have plenty of food for longer trips or additional dinner guests with the four-door refrigerator/freezer and the pullout pantry, which includes adjustable shelves.

The BenchMark® full-comfort dinette (NA 34Y) provides innerspring comfort while you dine. It includes seats that flip up for easy access hidden storage and the Dream Dinette™ table that raises and lowers easily, making bed conversion a snap.

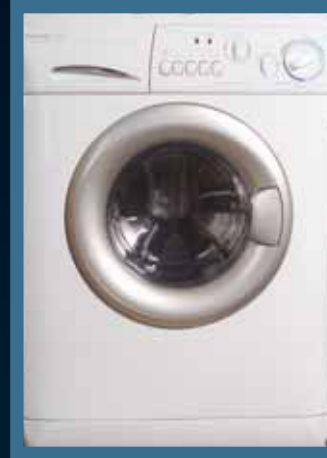


Kitchen Amenities

- Corian countertops
- Microwave/convection oven
- Amana range
- Trash/recycling center
- Full-extension drawer slides



The only manufacturer to receive the RVDA Quality Circle Award for exceptional products, service and support for 11 consecutive years.



Get your *rest*

Recharge for another day of travel in a spacious bedroom with dual slideouts and a king-size bed in the 34Y and 39Z. An Ideal Rest™ body-conforming memory foam mattress that perfectly cradles your body contours to help you sleep better is standard on the 34Y. An innerspring mattress is standard on the 37H and 39Z. You can also choose the Sleep Number® bed by Select Comfort™ for independently adjustable firmness on each side of the bed.

The bathroom features high-end fixtures and Corian® countertops. A curved, textured-glass door provides for an extra-spacious shower with a built-in shower seat and a flexible showerhead with five settings.



34Y Carmel Canyon with Honey Cherry

Bedroom Amenities

- Ideal Rest memory foam mattress (34Y)
- Available Sleep Number bed
- Available washer/dryer
- 26" LCD HDTV
- Available stereo system with CD/DVD player





Set *your course*

The ergonomic dash features a tilt/telescope steering wheel and the available new GPgo™ GPS from Alpine®. GPgo combines the power of an integrated system with the convenience of a portable GPS. The system can be viewed through the available color rearview monitor and an included 7" touch screen. GPgo also includes a remote and a portable unit with a 4" screen that allows you to bring the power of GPS with you in your tow vehicle. Electric mirrors with defrost and available side-view cameras that activate with the turn signal also help with navigation.

UltraLeather cab seats with a power pedestal for the driver and an available power pedestal with footrest for the passenger wrap you in comfort. Sit back and listen to the RV Radio®, complete with a CD player and weather band. Upgrade your RV Radio with the available Sirius® satellite radio package, which brings you 130 digital channels and comes with a complimentary six-month subscription. It also includes an iPod interface cable connector so you can control and listen to your iPod through the dash stereo.



Dash Features

- Rearview monitor
- Available GPgo GPS
- RV Radio
- Available Sirius satellite radio
- Power sunvisors
- Light-filtering shade (driver)
- Remote keyless entry





Committed to Service WE BACK OUR MOTOR HOMES WITH THE INDUSTRY'S BEST SERVICE AFTER THE SALE.

- 12-month/15,000-mile basic limited warranty
- 36-month/36,000-mile warranty on structure
- Standard 10-year limited parts-and-labor roof skin warranty
- Complimentary 24-hour roadside assistance program
 - RV Technical Assistance Hotline
 - RV Service Appointment Assistance
 - Emergency Trip Interruption
 - Emergency Message Service
 - Nationwide Trip Routing
 - Fee-Free Travelers Cheques



It's got the look

A full-body painted exterior will draw praise from your fellow motor home owners. An available lower front protective mask will keep it looking great. A large electric-powered patio awning with wind sensor controls comes standard, as do auxiliary lamps on both sides of the coach that can be used when maneuvering around the campground. Four deep-reserve Group 31 batteries deliver the amp.-hours you need for extended dry camping.



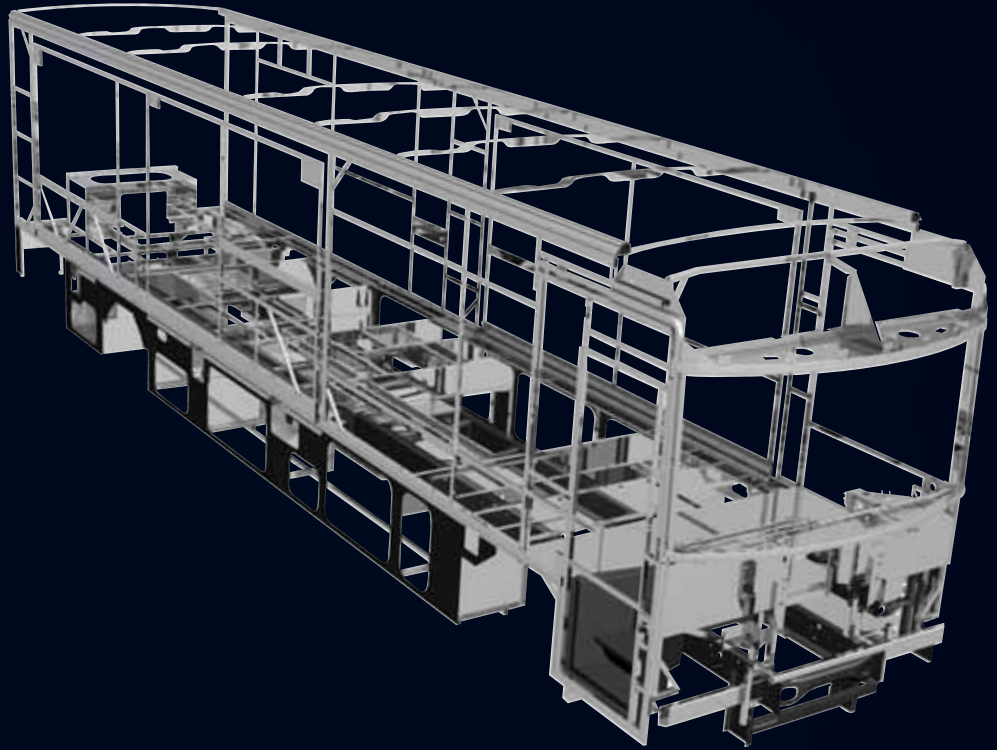
Bold and Beautiful The Freightliner XC chassis was designed and built exclusively for this application with the smooth ride and performance you demand. The Freightliner service network is second to none with over 400 locations in the U.S. and Canada, many open 24/7.

- 29,410-lbs. GVWR
- Cummins® ISB 6.7L turbo-charged diesel engine
- Allison® 6-speed 3000 MH electronic transmission
- Infinitely adjustable tilt-and-telescope steering wheel
- 55° wheel cut
- NeWay® front and rear air suspension
- 10,000-lb. hitch⁶
- Exhaust brake



THE LEADER AT EVERY TURN™

SUPER STRUCTURE



SuperStructure Legendary strength and durability are the result of the SuperStructure construction that goes into every Itasca motor home. It's a combination of quality, proprietary components and careful attention to detail that makes Itasca motor homes the cream of the crop.

- Patented Thermo-Panel™ sidewalls are durable and lightweight
- Specially engineered interlocking joints connect the floor, sidewalls and roof together for improved strength and durability
- An automotive-style dip tank applies an advanced electrodeposition coating to protect critical steel components
- The crowned, one-piece fiberglass roof is backed by a 10-year limited parts-and-labor roof skin warranty

Outside entertainment The available exterior entertainment center features a 32" TV, DVD player, radio, remote and a lockable compartment. Large, over-the-rail, pass-through storage compartments with side-hinged doors let you bring along large, bulky items. Rotocast compartments are durable and easy to clean.



The OnePlace® systems center lets you monitor and control key systems from one convenient location.

- **TRUEAIR** residential air conditioning with heat pump offers 10% more cooling output for 2009
- **TRULEVEL** tank monitors use sonar technology to provide precise readings every time
- **POWERLINE** energy management system monitors electrical usage and automatically cycles appliances on and off to prevent tripped campground circuit breakers



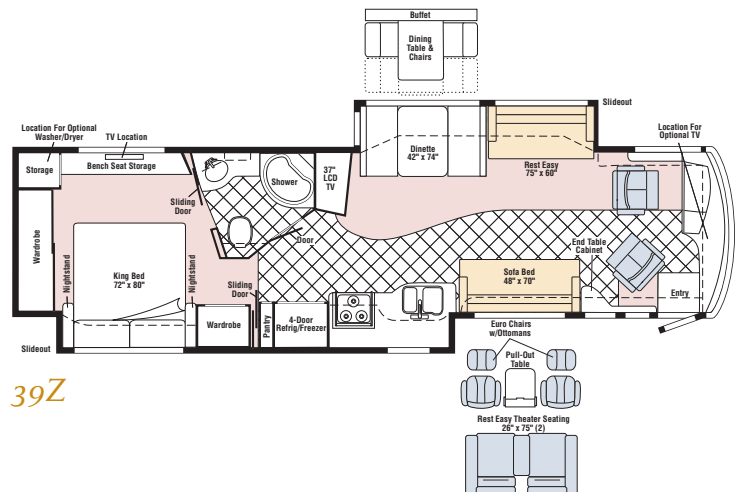
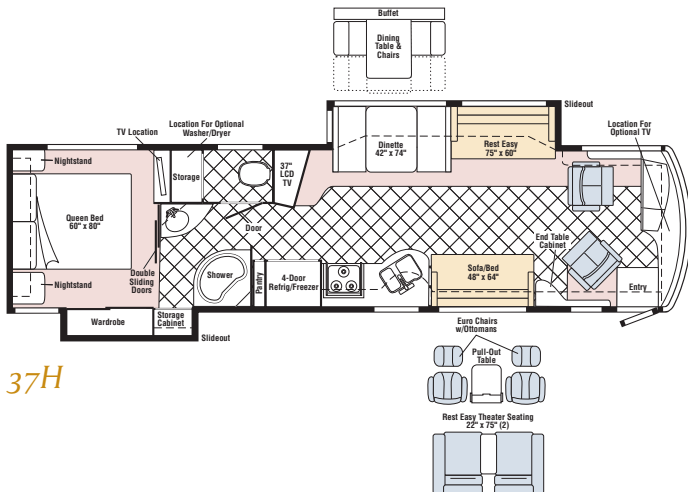
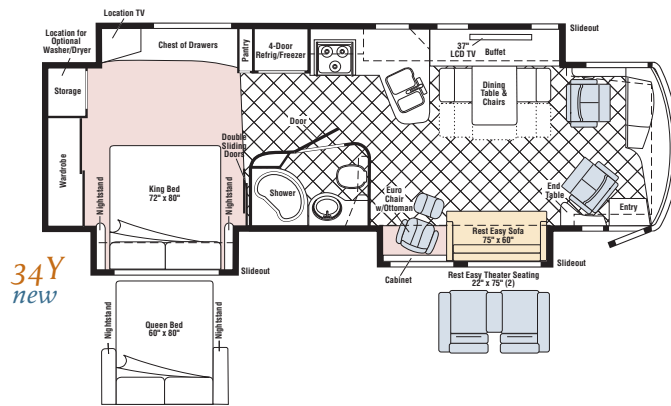
2009 Meridian *Floorplans & Specifications*

Dimensions shown are for sleeping space only and may vary due to styling differences. Dashed lines denote overhead storage areas. Floorplans and specifications are also available online at: goitasca.com



Weights & Measures

	34Y	37H	39Z
Length	34'7"	37'5"	39'1"
Exterior Height ¹	12'2"	12'2"	12'2"
Exterior Width ²	8'5"	8'5"	8'5"
Exterior Storage ³ (cu. ft.)	65.6	118.2	132.1
Awning Length	15'	18'	19'6"
Interior Height	7'2"	7'2"	7'2"
Interior Width	8'	8'	8'
Freshwater Capacity w/Heater ⁴ (gal.)	92	92	92
Holding Tank Capacity - Black/Gray ⁴ (gal.)	57/81	64/66	64/75
LP Capacity ⁵ (gal.)	28	28	28
Fuel Capacity (gal.)	90	90	90
GCWR ⁶ (lbs.)	39,410	39,410	39,410
GVWR (lbs.)	29,410	29,410	29,410
GAWR - Front (lbs.)	10,410	10,410	10,410
GAWR - Rear (lbs.)	19,000	19,000	19,000
Wheelbase	208"	242"	262"



Freightliner® XC Chassis

350-hp Cummins® ISB 6.7L turbo-charged diesel engine
 Rear radiator
 Allison® 6-speed 3000 MH electronic transmission
 NeWay® front and rear air suspension
 160-amp. alternator
 Engine exhaust brake
 4-wheel ABS
 Stylized aluminum wheels
 Automatic hydraulic leveling jacks
 Trailer Hitch⁶: 10,000-lb. drawbar/500-lb. maximum vertical tongue weight
 7-pin trailer wiring

Cab Conveniences

Cab seats w/armrests, lumbar support, multi-adjustable slide/swivel/recline
 Power driver's seat
 Passenger seat w/footrest
 RV Radio[®]: AM/FM stereo, CD player, weather band and 2 remotes
 Cruise control
 Powered step-well cover
 Powered sunvisors
 Defroster fans
 Driver and passenger window shades
 Chassis/house battery radio power switch
 Tilt/telescoping steering wheel
 Map lights
 Keyless entry
 Rearview Monitor System: black/white monitor w/single camera and 1-way audio
 C.B. wire prep
 Auxiliary start circuit
 Slider cab windows w/screen

34Y	37H	39Z	Optional Equipment
0	0	0	Power passenger seat w/footrest
0	0	0	Alpine® GPgo™ GPS on-the-go navigation system (requires color rearview monitor system)
0	0	0	Multi-disk CD changer w/remote
0	0	0	Sirius® satellite radio w/6-month paid subscription and iPod interface cable connector
0	0	0	Sideview camera system
0	0	0	Color rearview monitor system (w/rear and side-view cameras, one-way audio)

Interior

37" LCD HDTV
 Home Theater Sound System: amplifier, AM/FM stereo, CD/DVD player, receiver, 5 speakers & subwoofer
 Satellite system ready
 Video selection system
 Cab wraparound curtain
 Mini blinds (kitchen and bath)
 Day/night pleated shades (lounge, dinette and bedroom)
 OnePlace® systems center
 Dual-glazed/thermo-insulated/flush-mounted windows
 Rest Easy® single-control multi-position lounge

34Y	37H	39Z	Optional Equipment
0	0	0	Washer/dryer combo
0	0	0	King-Dome® HD-ready in-motion satellite system w/dual LNB (front and bedroom)
0	0	0	King-Dome automatic satellite system w/dual LNB (front and bedroom)
0	0	0	26" LCD HDTV (front)
0	0	0	Rest Easy single-control multiposition lounge w/UltraLeather
0	0	0	Rest Easy dual-control multiposition lounge w/UltraLeather

Kitchen

Corian® countertops
 4-door refrigerator/freezer w/icemaker
 Microwave/convection oven w/vented range fan
 3-burner Amana® range top w/storage below
 Corian range and sink covers
 Filtered cold water faucet

Bedroom

26" LCD HDTV
 Innerspring mattress (37H & 39Z)
 King-size Ideal Rest™ body-conforming memory foam mattress (34Y)

34Y	37H	39Z	Optional Equipment
0	0	0	Sleep Number® bed
0	0	0	Stereo System: AM/FM stereo, CD/DVD player, alarm clock, iPod/MP3 input, headphone jack
0			Queen bed w/innerspring mattress

Bath

Corian® countertops
 Handheld showerhead

Exterior

Entertainment Center: AM/FM stereo, CD player, remote, radio antenna, DC and AC receptacles
 Amplified TV antenna system
 Electric patio awning w/wind sensor and remote
 KeyOne™ lock system
 Lighted storage compartments
 Rotocast compartments
 Automatic entrance steps
 Ladder
 Full-width mud guard
 Air horns (under hood)
 Electric mirrors w/defrost and integrated turn signal

34Y	37H	39Z	Optional Equipment
0	0	0	Entertainment Center: 32" TV, AM/FM stereo, DVD player w/remote, radio antenna (NA w/frameless cabinetry)
0	0	0	Folding step ladder
0	0	0	Electric entrance awning
0	0	0	Lower front protective mask

Heating & Cooling System

TrueAir® residential central air conditioning w/heat pump
 40,000 BTU furnace
 Powered roof vent (bath and kitchen)

Electrical System w/QuickPort®

Service Center: lighted, cable input, power cord, shoreline/generator automatic changeover switch, portable satellite hookup

50-amp. power cord
 2,000-watt inverter/charger w/remote panel
 8,000-watt Cummins Onan Quiet Diesel™ generator
 4 deep-cycle Group 31 marine/RV batteries (slideout tray)
 Battery disconnect system (coach and chassis)
 PowerLine® energy management system
 Automatic dual battery charge control
 Solar panel battery charger
 Chassis battery charger/maintainer

34Y	37H	39Z	Optional Equipment
0	0	0	Generator automatic start system

Plumbing System w/QuickPort & QuickConnect®

Service Center: pressurized city water hook-up w/diverter fill, drain for fresh water, drainage valves, exterior wash station w/pump switch, holding-tank flushing system, 10' sewer hose, lights
 10-gallon water heater w/motoraid
 TrueLevel™ holding-tank monitoring system
 Winterization Package: water heater bypass valve and siphon tube
 Full-coach water filtration system
 LP tank
 Heated holding-tank compartment

Safety

Seat belts
 Child seat anchor (dinette)
 LP, smoke and carbon monoxide detectors
 10 BC fire extinguisher
 Ground fault interrupter
 High-mount brake lights

Warranty⁷

12-month/15,000-mile basic warranty,⁸
 36-month/36,000-mile limited warranty on structure,⁸
 10-year limited parts and labor warranty on roof skin⁸

- The height of each model is measured to the top of the tallest standard feature and is based on the curb weight of a typically equipped unit. The actual height of your vehicle may vary by several inches depending on chassis or equipment variations. Please contact your dealer for further information.
 - Meridian floorplans feature a wide-body design – over 96." In making your purchase decision, you should be aware that some states restrict access on some or all state roads to 96" in body width. Before making your purchase decision, you should confirm the road usage laws in the states of interest to you.
 - The load capacity of your motor home is designated by weight, not by volume, so you cannot necessarily use all available space when loading your motor home.
 - Capacities are based on measurements prior to tank installation. Slight capacity variations can result due to installation applications.
 - Capacities shown are tank manufacturer's listed water capacity (W.C.). Actual filled LP capacity is 80% of listing due to overfilling prevention device on tank.
 - Actual towing capacity is dependent on your particular loading and towing circumstances which includes the GVWR, GAWR, and GCWR as well as adequate trailer brakes. Please refer to the Operator's Manual of your vehicle for further towing information.
 - See separate chassis warranty.
 - See your dealer for complete warranty information.
- NA Not Available
 0 Optional

Not all items available in combination. See dealer for details. Winnebago Industries® continuing program of product improvement makes specifications, equipment, model availability, and prices subject to change without notice. Comparisons to other motor homes are based on the most recent information available at printing.

What's on the Web?

Want to see more of the Itasca Meridian? You'll find more pictures, in-depth info, floorplans, and complete specs at goitasca.com. You'll also see videos and highlights of key features, such as:



BenchMark[®]

Quick CONNECT

TRUEAIR

REST EASY[®]

QuickPort

SUPER STRUCTURE

SIRIUS

ONE PLACE[®]

Ideal Rest

RV-RADIO

POWERLINE[®]

GPgo
GPS ON THE GO

SMARTSPACE[™]

SMART STORAGE

sleep number[®]
by SELECT COMFORT

TRUELEVEL


Built proudly by



goitasca.com

NYSE: WGO



Join the  **ITASCA Family** ITASCA OWNERS JUST HAVE MORE FUN. WHEN YOU BUY A MERIDIAN YOU CAN BECOME A PART OF THE WINNEBAGO-ITASCA TRAVELERS CLUB. AS A MEMBER, YOU'LL MEET OTHER MOTOR HOME ENTHUSIASTS, TRAVEL TO INTERESTING PLACES WITH INTERESTING PEOPLE, AND BE THE FIRST TO LEARN ABOUT NEW ITASCA PRODUCTS. SEE WHAT THE WIT CLUB IS ALL ABOUT AT WITCLUB.COM



- Join the WIT Club
- Caravans and rallies
- Local and state activities
- RV travel and benefits

For Sales and Service Information Contact:

Seat belts are your most important hookup. Always buckle up.