

2009 *Destination*[®]



50 years on the road

Since the first Winnebago Industries RV rolled off the assembly line 50 years ago, the RV lifestyle has grown from a curiosity to a phenomenon. We're proud to have led the way with innovative products, quality construction and a passion for customer satisfaction. Join all of us in the extended Winnebago Industries family as we celebrate 50 years of travel, tailgates and extended weekends.

Full-body Paint



DEEP MAHOGANY

Full-body Paint



PYRITE

Full-body Paint



COOL SILVER

Full-body Paint



DRAMATIC GOLD

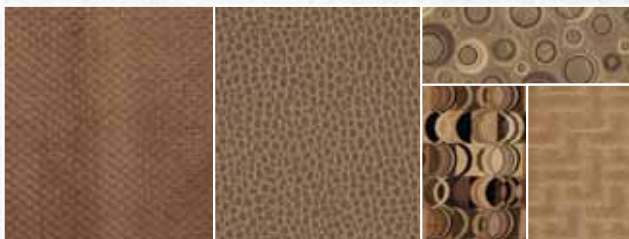


50 YEARS ON THE ROAD

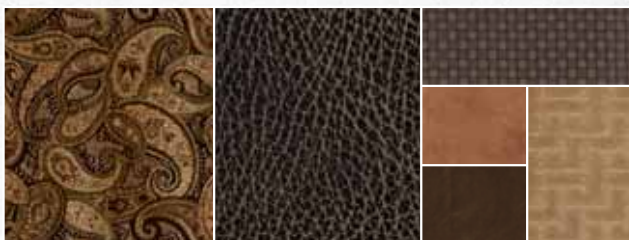
Interior Decor

Choose from three fabric selections and cabinetry in traditional or frameless styling with hidden hinges.

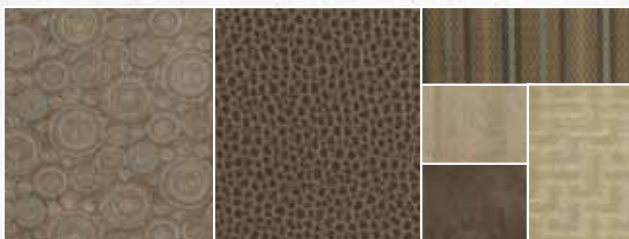
MAIN	ULTRA-LEATHER	BEDSPREAD	
		ACCENT	CARPET
		ACCENT	



IRON GATE WITH AVAILABLE FIELDS ULTRALEATHER™



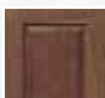
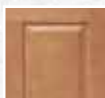
CHESTERFIELD WITH AVAILABLE STEERHIDE ULTRALEATHER



CITYSCAPE WITH AVAILABLE LODEN ULTRALEATHER

Traditional Cabinet

Optional Frameless Cabinet (NA 39N)



**BELMONT
MAPLE**

**SIERRA
MAPLE**

**CONCERT
CHERRY**

**HONEY CHERRY
W/WASHED
MAPLE ACCENTS**

**HONEY
CHERRY**

2009 *Destination*[®]

Maybe you love the power of diesel. Or perhaps you prefer the convenience of gas. Whichever engine you prefer, you'll love the Winnebago Destination[®]. It's built on your choice of a Freightliner[®] XC chassis with a Cummins[®] 340-hp turbo-diesel engine or the available Workhorse[™] UFO gas pusher chassis with a 340-hp GM Vortec[™] engine (NA 39N). The Destination comes in three distinct models, including the new 39N with a front entry and a full-wall slideroom. With SmartSpace[™] amenities making the most of the available space and a 7'2" ceiling height creating a roomy and open feel, the 2009 Winnebago Destination is a place you'll love to call home.

Define your interior.

The choices continue inside the Destination where you can pick traditional cabinet styling or the contemporary look of frameless cabinetry (NA 39N) in a lush Honey Cherry. Add the available Washed Maple accents to the frameless cabinets for an even bolder look. Dual-glazed, thermo-insulated windows maintain excellent thermal efficiency.

To keep you entertained, all models have a 37" LCD TV located mid-coach. You can also add a 26" LCD TV in the front overhead entertainment center for added viewing options. The standard five-speaker home theater sound system brings more life to movies, TV shows and your favorite CDs. A 600-watt inverter lets you enjoy the living area and bedroom entertainment features without shoreline or generator power. Your Destination also comes pre-wired for the available King-Dome® satellite system with dual LNBS that accommodates two receivers so you can watch separate digital programs at the same time.



The **WEB** icon designates a Winnebago Industries Key Feature. For further in-depth information and photos, use the drop-down menu or click on the 'Key Features' page at gowinnebago.com.



WEB **REST EASY**® The Rest Easy multi-position lounge glides from a sofa to a recliner to a comfortable bed at the touch of a button.



WEB BenchMark



REFRIGERATOR This spacious four-door refrigerator/freezer with icemaker comes standard on the 39N and is available on the 37G and 39W.

Enjoy your meal.

The galley gives you plenty of room to work with wide Corian® solid-surface countertops and matching sink and range covers that expand your prep space. A microwave oven and an Amana® range with three sealed burners come standard. You can also choose a microwave/convection oven with stainless steel finish for additional cooking flexibility.

The BenchMark® full-comfort dinette features innerspring cushions that flip up for access to storage compartments and the legless Dream Dinette™ table that raises and lowers easily with just one hand. It also quickly converts into a comfortable bed. You can also choose a dining table with four chairs.

DRAWERS Drawers are sized for maximum storage and include full-extension slides for easy access. Positive latches hold the drawers closed during travel.





Sleep is king.

Enjoy the peace and serenity of a spacious and comfortable slideout bedroom. A queen bed comes standard or you can upgrade to a king bed on the 39W or the power-adjustable king bed on the 39N. The power-adjustable bed elevates the back for reading or watching TV and features an Ideal Rest™ memory foam mattress for body-conforming support. The bedroom offers plenty of storage in a large wardrobe and a convenient bench seat with storage below on the 39W.

Choose the available bunk bed/wardrobe module on the 39N and you'll have kid-friendly sleeping accommodations. A sliding door between the bedroom and bunk area provides privacy. If the kids stay home, the bottom bunk flips up to access storage below and the top bunk flips up to create additional wardrobe space.



WEB Ideal Rest



STEREO SYSTEM The bedroom TV connects to the available CD/DVD player, complete with AM/FM stereo, alarm clock, MP3 input and headphone jack.



SHOWER The spacious shower features a built-in seat (NA 39N) and an elegant curved door. For added comfort, the showerhead is detachable and features five spray settings.

A better way to drive.

A stylish, ergonomic dash design, one-piece windshield and large exterior mirrors make driving the Destination an absolute pleasure. Conveniences such as map lights and a rearview monitor system are all close at hand for easy navigation. You can also add the side-view camera system that activates with the turn signals for added peace of mind when maneuvering. Auxiliary lamps provide extra illumination for nighttime maneuvers. Radial-arm windshield wipers work with the one-piece windshield to enhance your visibility in wet weather. You can also add power sunvisors (39N) for sunny day driving.

While you drive, relax to your favorite music on the RV Radio®. It features an AM/FM stereo, CD player, weather band and an auxiliary input for your iPod/MP3 player. A steering wheel remote and a handheld remote give you control of your music from anywhere in the coach. Add the available Sirius® satellite radio package for digital programming from coast to coast. This package includes an iPod interface cable connector and a complimentary six-month Sirius subscription.



WEB



CAB SEATS UltraLeather™ cab seats provide all-day comfort with an available six-way power pedestal for the driver and an available footrest for the passenger. A cabinet next to the passenger seat provides a handy place for books and magazines.



All decked out.

You'll turn heads when you pull up in your Destination decked out in full-body paint and boasting a large patio awning. A lower front protective mask is available to guard against rock chips.

Exterior storage is bountiful and easy to access, thanks to the innovative Smart Storage™ design that incorporates helpful features like lights, pass-through compartments and side-hinged compartment doors. The compartments come with a rotocast lining that is exceptionally strong and easy to clean. The KeyOne™ system allows access to exterior compartments with a single key.

Convenient service centers house water and electrical components for quick and easy hookups at the campground. Large, color-coded labels make it easy to identify connection points. Use the QuickPort® service connection hatches to close the service doors with hoses and power cords still attached. A winterization system comes standard for hassle-free seasonal storage.

Use the automatic leveling jacks to quickly level your coach. Controls at the entrance door and service center let you watch the jacks lower into position.



BATTERIES Two deep-reserve Group 31 batteries provide up to 44% more amp.-hours for 2009.



WEB ONE PLACE™ The OnePlace systems center puts all of your important controls in one location. These include controls for the PowerLine energy management system and the TrueAir residential central air conditioning.



WEB POWERLINE® energy management system monitors electrical usage and cycles appliances on and off to prevent tripped campground circuit breakers.



WEB TRUELEVEL™ holding-tank monitoring system uses sonar technology to read liquid levels from outside the tank. There are no probes to corrode or clog, just accurate readings time after time.



WEB TRUEAIR™ residential central air conditioning with heat pump provides even cooling throughout the coach and delivers 10% more cooling power for 2009.

FREIGHTLINER® XC CHASSIS Diesel enthusiasts can choose the Freightliner XC chassis as the foundation of their Destination. Climb hills with ease using the 340-hp Cummins ISB 6.7L diesel engine with 660 lb.-ft. of torque.

Full-Air

A full-air braking system delivers excellent stopping power, including four-wheel anti-lock brakes. You'll hardly even notice bumps in the road, thanks to the NeWay® front and rear air suspension.

- 27,910-lbs. GVWR
- Cummins ISB 6.7L diesel engine
- Touchpad shifter
- 55° wheel cut
- Allison® 2500MH Series 6-speed transmission
- Sachs® shocks
- 10,000-lbs. hitch⁶
- Battery disconnect system



THE LEADER AT EVERY TURN™

WORKHORSE™ UFO CHASSIS The Workhorse UFO chassis gives you pusher power with a rear GM Vortec 8.1L gas engine. It delivers 340-hp and 455 lb.-ft. of torque for your toughest climbs. Combined with an Allison 2000 Series 6-speed transmission, the Workhorse UFO chassis brings the GVWR up to an impressive 26,000 pounds — the same GVWR of many traditional diesel pushers.

Smooth Ride

Enjoy a smooth ride over rough roads on a Hendrickson® suspension built exclusively for the UFO chassis. A Quadraulic™ braking system employs four-wheel anti-lock disc brakes for short stopping distance.

- 26,000-lbs. GVWR
- GM Vortec 8.1L engine
- Adjustable pedals
- Allison 2000 Series 6-speed transmission
- Adjustable foot pedals
- Touchpad shifter
- 55° wheel cut
- Bilstein® shocks
- 5,000-lbs. hitch⁶
- Battery disconnect system

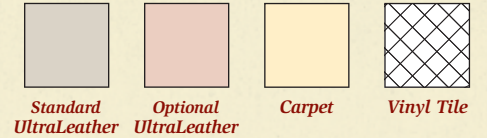


EXTERIOR STORAGE Pass-through storage compartments are an integral part of the Smart Storage design that provides maximum storage capacity.

WEB SMART STORAGE

2009 *Destination*[®] Floorplans & Specifications

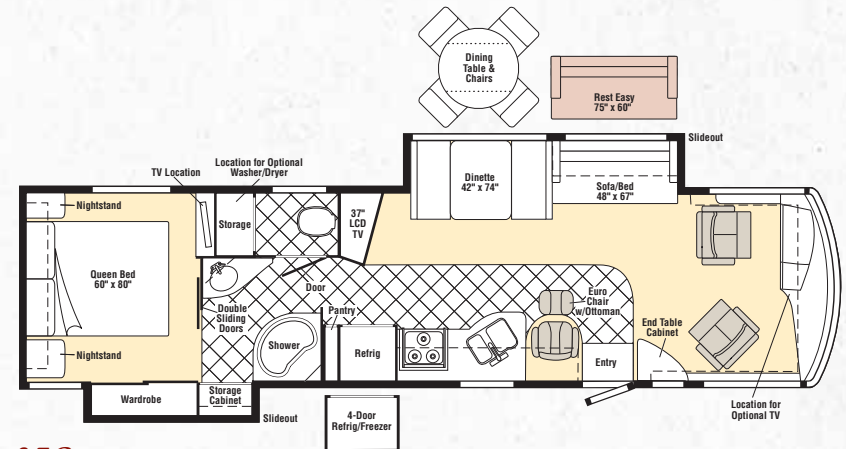
Dimensions shown are for sleeping space only and may vary due to styling differences. Dashed lines denote overhead storage areas. Floorplans and specifications are also available online at: gowinnebago.com



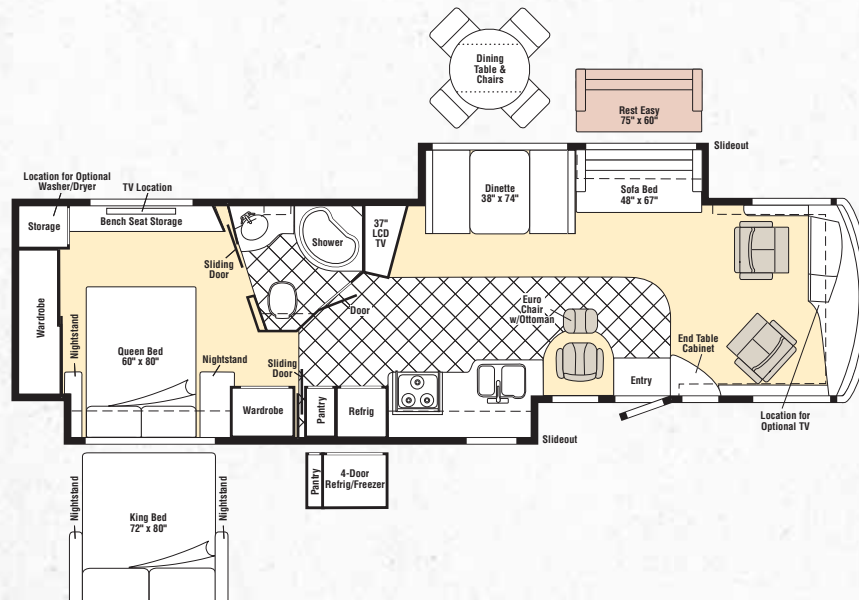
Weights & Measures

	37G	39W	39N
Length	37'10"	39'6"	39'11"
Exterior Height ¹	12'4"	12'4"	12'4"
Exterior Width ²	8'5"	8'5"	8'5"
Exterior Storage ³ (cu. ft.)	118.4	143	122
Awning Length	19'6"	19'6"	19'6"
Interior Height	7'2"	7'2"	7'2"
Interior Width	8'	8'	8'
Freshwater Capacity w/Heater ⁴ (gal.)	92	92	92
Holding Tank Capacity - Black/Gray ⁴ (gal.)	64/66	64/75	52/79
LP Capacity ⁵ (gal.)	28	28	28
Fuel Capacity (gal.)	90 ^A /100 ^B	90 ^A /100 ^B	90 ^A
GCWR ⁶ (lbs.)	33,000 ^A /30,000 ^B	33,000 ^A /30,000 ^B	33,000 ^A
GVWR (lbs.)	27,910 ^A /26,000 ^B	27,910 ^A /26,000 ^B	27,910 ^A
GAWR - Front (lbs.)	10,410 ^A /9,500 ^B	10,410 ^A /9,500 ^B	10,410 ^A
GAWR - Rear (lbs.)	17,500 ^A /17,500 ^B	17,500 ^A /17,500 ^B	17,500 ^A
Wheelbase	242"	262"	267"

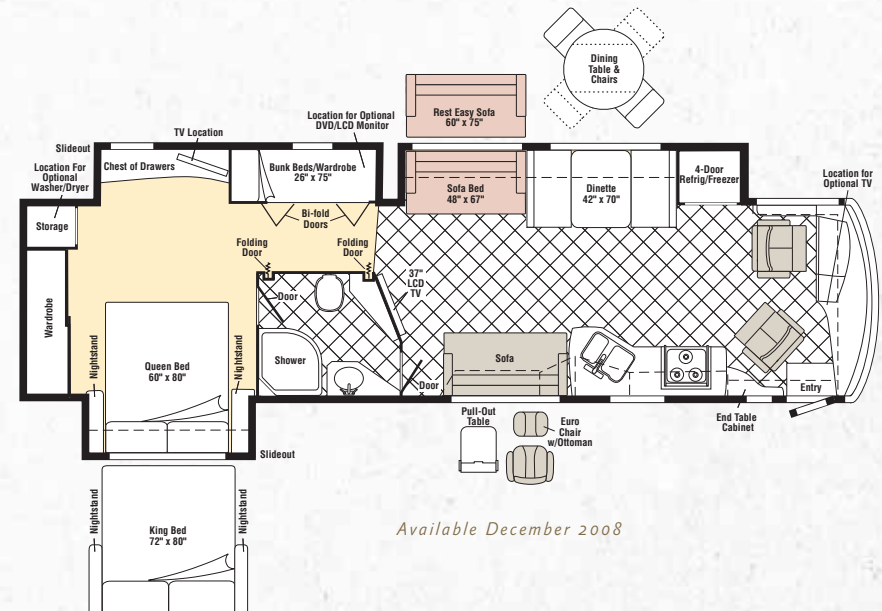
A Freightliner XC Chassis **B** Workhorse UFO Chassis



37G



39W



39N
new

Available December 2008

Chassis

Freightliner® XC Chassis

- 340-hp Cummins® ISB 6.7L turbo-charged diesel engine
- Allison® 2500 MH 6-speed transmission
- NeWay® front and rear air suspension
- 160-amp. alternator
- Engine exhaust brake
- **Trailer Hitch[®]:** 10,000-lb. drawbar/500-lbs. maximum vertical tongue weight

4-wheel ABS

Rear radiator

Stainless steel wheel liners

Automatic leveling jacks

7-pin trailer wiring

37C	39W	39N
o	o	o

Optional Equipment

Workhorse™ UFO Chassis

- 340-hp GM Vortec™ 8100 V8 gas engine
- Allison 2000 series 6-speed transmission w/two overdrive gears
- Chrome exhaust extensions
- 145-amp. alternator
- **Trailer Hitch[®]:** 5,000-lb. drawbar/500-lbs. maximum vertical tongue weight

Cab Conveniences

Cab seats w/armrests, lumbar support, multi-adjustable slide/recline/swivel

RV Radio[®]: AM/FM stereo, CD player, weather band, remotes

Power steering w/tilt wheel

Electric mirrors w/defrost

Cruise control

Sunvisors

Defroster fans

Chassis/house battery radio power switch

Map lights

Rearview monitor system w/black/white monitor and 1-way audio

C.B. wire prep

Auxiliary start circuit

Full-slider cab windows w/screen

37C	39W	39N
o	o	o

Optional Equipment

Power driver's seat

Passenger seat w/footrest

Sirius® satellite radio w/6-month paid subscription and iPod interface cable connector

Side-view monitor system

Powered sunvisors

Interior

37" LCD TV

Home Theater Sound System: AM/FM stereo, amplifier, CD/DVD player, receiver, 5 speakers and subwoofer

Satellite system ready

Video selection system

Cab wraparound curtain

Plated shades (lounge and dining)

OnePlace® systems center

Dual-glazed/thermo-insulated/flush-mounted windows

37C	39W	39N
o	o	o

Optional Equipment

Washer/dryer combo

Automatic King-Dome® satellite dish antenna, dual LNBS (front and bedroom)

26" LCD TV (front overhead)

Rest Easy® single-control multi-position lounge

Rest Easy single-control multi-position lounge w/UltraLeather™

Galley

Corian® solid-surface countertops

2-door refrigerator/freezer (39N 4-door w/icemaker)

Microwave w/vented range fan

3-burner Amana® range top w/storage below

Solid-surface range and sink covers

Mini blinds

Powered roof vent

37C	39W	39N
o	o	o

Optional Equipment

Stainless steel microwave/convection oven w/vented range fan

4-door refrigerator freezer w/icemaker

Bedroom

Innerspring mattress

20" LCD TV w/remote (26" in 39N)

Underbed storage (37C)

Plated shades

Bunk beds/wardrobe w/privacy doors (39N)

37C	39W	39N
o	o	o

Optional Equipment

Stereo System: AM/FM stereo, CD/DVD player, alarm clock, iPod/MP3 input, headphone jack

26" LCD TV

King bed with Serta® mattress

2 DVD players w/LCD monitors (bunk area)

King bed w/electric adjustment and Ideal Rest™ memory foam mattress

Bath

Built-in shower seat (NA 39N)

Laminate countertop

Mini blinds (37C)

Powered roof vent

Exterior

Patio awning

KeyOne™ lock system

Lighted storage compartments

Amplified TV antenna system

Automatic entrance steps

Ladder

37C	39W	39N
o	o	o

Optional Equipment

Entertainment Center: AM/FM stereo, DVD player, 32" LCD TV, remotes

19'6" electric patio awning w/wind sensor

Lower front protective mask

8' manual or electric patio awning w/wind sensor

Electric entry door awning

Heating & Cooling System

TrueAir® residential central air conditioning w/heat pump

40,000 BTU furnace

Electrical System w/QuickPort®

Service Center: lighted, cable input, power cord, shoreline/generator automatic changeover switch, portable satellite hookup

50-amp. power cord

600-watt inverter/charger w/remote panel

6,000-watt Cummins Onan® Quiet Diesel™ generator

2 deep-cycle Group 31 marine/RV batteries
Battery disconnect system (coach and chassis)

PowerLine® energy management system

Automatic dual-battery charge control

Solar panel battery charger

Chassis battery charger/maintainer

37C	39W	39N
o	o	o

Optional Equipment

5,500-watt Cummins Onan Marquis Gold™ generator (w/Workhorse chassis)

Plumbing System w/QuickPort

Service Center: lighted, pressurized city water hook-up w/diverter fill, freshwater drain, drainage valves, exterior wash station w/pump switch, holding-tank flushing system, 10' sewer hose

10-gallon water heater w/motoraid

TrueLevel™ holding-tank monitoring system

Winterization Package: water heater bypass valve and siphon tube

Full-coach water filtration system

LP tank

Heated holding tank compartment

Safety

Seat belts

Child seat anchor (dinette)

LP, smoke and carbon monoxide detectors

10 BC fire extinguisher

Ground fault interrupter

High-mount brake lights

Warranty⁷

12-month/15,000-mile basic warranty,⁸
36-month/36,000-mile limited warranty on structure,⁸
10-year limited parts-and-labor warranty on roof skin⁸

- The height of each model is measured to the top of the tallest standard feature and is based on the curb weight of a typically equipped unit. The actual height of your vehicle may vary by several inches depending on chassis or equipment variations. Please contact your dealer for further information.
- Destination floorplans feature a wide-body design – over 96." In making your purchase decision, you should be aware that some states restrict access on some or all state roads to 96" in body width. Before making your purchase decision, you should confirm the road usage laws in the states of interest to you.
- The load capacity of your motor home is designated by weight, not by volume, so you cannot necessarily use all available space when loading your motor home.
- Capacities are based on measurements prior to tank installation. Slight capacity variations can result due to installation applications.
- Capacities shown are tank manufacturer's listed water capacity (W.C.). Actual filled LP capacity is 80% of listing due to overfilling prevention device on tank.
- Actual towing capacity is dependent on your particular loading and towing circumstances which includes the GVWR, GAWR, and GCWR as well as adequate trailer brakes. Please refer to the Operator's Manual of your vehicle for further towing information.
- See separate chassis warranty.
- See your dealer for complete warranty information.

o Optional

Not all items available in combination. See dealer for details.

Winnebago Industries® continuing program of product improvement makes specifications, equipment, model availability, and prices subject to change without notice. Comparisons to other motor homes are based on the most recent information available at printing.



Built by Winnebago Industries. Built to last.

Winnebago motor homes are built by Winnebago Industries, the company that defined motor homes. The company that built its reputation on quality construction. The company that transformed the motor home concept into a way of life.



Today, Winnebago Industries brings that reputation for quality and its 50-year history of RV innovation to the design and construction of

WEB every motor home. It's all a part of SuperStructure®, our exclusive system of proprietary structural components that instills each motor home with improved strength and durability.

Solid Foundation Steel and aluminum truss work provides a solid, flat foundation for the floor and sidewalls. Winnebago Industries engineers also take special care to distribute the weight of components to ensure proper handling and stability.

Strong as Steel Appliances are secured directly to embedded steel plates for added safety. Windshields are also mounted in steel with an automotive-style sealant; lesser designs use a rubber gasket to mount the windshield in fiberglass.



Interlocking Joints

The floor, sidewalls and roof are all integrally connected using interlocking joints. This creates a Destination body that

acts as a cohesive unit for improved strength and durability.

E-Coating Winnebago Industries employs an automotive-style dip tank process to apply an advanced electrodeposition coating on critical steel components for corrosion protection.

Thermo-Panel® Sidewalls Invented by Winnebago Industries, Thermo-Panel construction combines a fiberglass panel, high-density, block-foam insulation and aluminum support structures to create some of the most durable, lightweight sidewalls in the industry.

Attention to Detail Whether it's sending every Destination through a high-pressure water tunnel to check for leaks or labeling individual wires and barcoding parts to save time and frustration during service, Winnebago Industries considers every detail to ensure your Winnebago motor home provides you with years of pleasure.



1-year-old Winnebago fiberglass roof



1-year-old competitor's rubber roof

Fiberglass Roof The Destination features a crowned, one-piece fiberglass roof, backed with a 10-year limited parts-and-labor roof skin warranty. Fiberglass offers superior strength, attractiveness and durability over the rubber roofs found on many competitive models which can chalk, streak and degrade over time. Fiberglass also provides increased puncture and tear resistance.



gowinnebago.com Visit us on the web for more info on all of our motor homes, the latest product updates and a host of web-exclusive content.



Take a Tour We're proud of our process, state-of-the-art facilities and the people who make Winnebago Industries number one. We invite you to visit our complex in Forest City, Iowa, for a first-hand look at the dedication and technology behind every motor home we build.



Recognized Quality The Recreation Vehicle Dealer Association annually rates RV manufacturers and awards the Quality Circle award to manufacturers who provide exceptional products, service and support. Winnebago Industries is proud to be the only manufacturer to receive this award every year since its inception.



Committed to Service We back our motor homes with the industry's best service after the sale.

- 12-month/15,000-mile basic limited warranty
- 36-month/36,000-mile warranty on structure
- Standard 10-year limited parts-and-labor roof skin warranty
- Complimentary 24-hour roadside assistance program

- RV Technical Assistance Hotline
- Emergency Trip Interruption
- Nationwide Trip Routing
- RV Service Appointment Assistance
- Emergency Message Service
- Fee-Free Travelers Cheques



- TripSaver Fast Track Parts. TripSaver guarantees that in-stock warranty parts ship directly to your dealer within 24 hours.
- National dealer service network



WIT Club Winnebago owners are like family. Joining the Winnebago-Itasca Travelers is a great way to meet and travel with other Winnebago enthusiasts. Members enjoy:

- Caravans and rallies
- Local and state group activities
- RV travel benefits

For Sales and Service Information Contact:

Built proudly by



NYSE listing: WGO

Printed in USA

Seat belts are your most important hookup. Always buckle up.

© 2008 Winnebago Industries, Inc.