

20 Sunstar® 09





The only manufacturer to receive the RVDA Quality Circle Award for exceptional products, service and support for 11 consecutive years.

On the Cover: 32K Light Bronzemist Metallic Deluxe Graphics

32K Warm Glow with Sierra Maple



**SMARTSPACE**

#### Amenities

- 19" or 32" LCD TV
- Satellite system ready
- Full-extension drawer slides
- Available UltraLeather™

## Things are *looking brighter*

The Sunstar® makes it easy to move up to Class A living with SmartSpace™ design and a variety of options at a comfortable price. Choose between a Ford® or available Workhorse™ chassis in three distinct floorplans, including front and rear slideouts on the 32K and the new 26P.

Every floorplan comes standard with a 19" LCD TV, which can be upgraded to the 32" LCD TV, shown above. The sofa and dinette offer comfortable seating by day and quickly convert into beds at night. A spacious bedroom in the back provides privacy and an abundance of storage in a compartment hidden under the bed (26P and 32K).

The kitchen makes you feel at home with residential features such as a microwave oven, large pantry, refrigerator/freezer, three-burner range top, vented range hood and an available oven. It's home cooking in your new home: the 2009 Itasca Sunstar.





## This is what *travel is all about*

You'll love going places in your new, user-friendly Sunstar, thanks to convenient color-coded labels in the service center and Smart Storage™ compartments, such as the side storage compartment on the 32K, that let you carry more gear. Available automatic leveling jacks make it easy to get settled at the campground while two deep-reserve, Group 24 batteries provide plenty of power for your electronics. Winter storage is painless, too, with a standard winterization package.

### Exterior highlights

- Available awning
- Standard or deluxe graphics
- Two ceiling-ducted high-efficiency roof air conditioners (32K)
- PowerLine energy management system (32K)
- Durable fiberglass roof

**Bunk Beds** The 32K includes rear bunk beds with storage shelves and available DVD players with 8.5" LCD monitors and headphones. A large bedroom wardrobe provides plenty of extra storage.



### Weights & Measures

	26P	30B	32K
Length	26'10"	30'11"	33'
Exterior Height <sup>1</sup>	12'4"	12'4"	12'4"
Exterior Width <sup>2</sup>	8'5"	8'5"	8'5"
Exterior Storage <sup>3</sup> (cu. ft.)	49.8	107.8	73.7
Awning Length	11'6"	16'	13'
Interior Height	6'8"	6'8"	6'8"
Interior Width	8'	8'	8'
Freshwater Capacity w/Heater <sup>4</sup> (gal.)	64	62	75
Holding Tank Capacity - Black/Gray <sup>4</sup> (gal.)	43/38	41/57	44/46
LP Capacity <sup>5</sup> (gal.)	18	18	18
Fuel Capacity (gal.)	75	75	75
GCWR <sup>6</sup> (lbs.)	26,000 <sup>A</sup> /22,000 <sup>B</sup>	26,000 <sup>A</sup> /22,000 <sup>B</sup>	26,000 <sup>A</sup> /26,000 <sup>C</sup>
GVWR (lbs.)	16,000 <sup>A</sup> /16,000 <sup>B</sup>	18,000 <sup>A</sup> /18,000 <sup>B</sup>	22,000 <sup>A</sup> /22,000 <sup>C</sup>
GAWR - Front (lbs.)	6,500 <sup>A</sup> /6,500 <sup>B</sup>	7,000 <sup>A</sup> /7,000 <sup>B</sup>	7,500 <sup>A</sup> /7,500 <sup>C</sup>
GAWR - Rear (lbs.)	11,000 <sup>A</sup> /10,500 <sup>B</sup>	11,000 <sup>A</sup> /12,000 <sup>B</sup>	14,500 <sup>A</sup> /14,500 <sup>C</sup>
Wheelbase	158" <sup>A</sup> /159" <sup>B</sup>	190"	208"

**A** Ford F53 Chassis

**B** Workhorse W16/W18 Chassis

**C** Workhorse W22 Chassis



# Committed to Service WE BACK OUR MOTOR HOMES WITH THE INDUSTRY'S BEST SERVICE AFTER THE SALE.

- 12-month/15,000-mile basic limited warranty
- 36-month/36,000-mile warranty on structure
- Standard 10-year limited parts-and-labor roof skin warranty
- Complimentary 24-hour roadside assistance program
  - RV Technical Assistance Hotline
  - Emergency Trip Interruption
  - Nationwide Trip Routing
  - RV Service Appointment Assistance
  - Emergency Message Service
  - Fee-Free Travelers Cheques

## Chassis

### Ford® F53 Chassis

- 362-hp 6.8L Super-Duty V10 SOHC Triton® engine
- TorqShift™ 5-speed automatic transmission
- 130-amp. alternator

### Hydraulic brakes

### 4-wheel ABS

Trailer Hitch<sup>6</sup>: 5,000-lb. drawbar/500-lbs. maximum vertical tongue weight w/7-pin connector

### Stainless steel wheel liners

26P	30B	32K
o	o	o
o	o	o
o	o	o
o	o	o
o	o	o

### Optional Equipment

- Workhorse™ W16 (26P)/W18 (30B) Chassis
  - GM Vortec™ 8.1L V8 340-hp engine
  - GM Hydramatic 4L85-E automatic 4-speed electronic transmission w/overdrive
  - 145-amp. alternator
- Workhorse W22 Chassis
  - GM Vortec 8.1L V8 340-hp engine
  - Allison® 1000MH automatic 6-speed transmission w/overdrive and electronic control
  - 145-amp. alternator
- Automatic leveling jacks
- Spare tire

## Cab Conveniences

Cab seats w/armrests, lumbar support, multi-adjustable slide/recline/swivel

AM/FM stereo w/CD player

Chassis/house battery radio power switch

Tilt steering wheel

Cruise control

Map lights

Sunvisors

C.B. wire prep

26P	30B	32K
o	o	o
o	o	o

### Optional Equipment

- Rearview monitor system with one-way audio
- Power mirrors w/defrost

## Interior

19" LCD TV

Amplified TV antenna system

DVD cable ready (front overhead TV)

Satellite system ready

Cab wraparound curtain

Pleated shades

Systems center (26P & 32K)

OnePlace® systems center (30B)

Roof vent

26P	30B	32K
o	o	o
o	o	o

### Optional Equipment

- 32" LCD TV
- Vinyl floor covering (excludes cab, slideroom floor and bedroom)

## Kitchen

Laminate countertops

2-door refrigerator/freezer

Microwave oven

3-burner range top w/storage below

Vented range hood

Mini blinds

26P	30B	32K
o	o	o

### Optional Equipment

- 3-burner range w/oven

## Bedroom

Innerspring mattress

Foam mattress (bunk beds, 32K)

Pleated shades

26P	30B	32K
o	o	o

### Optional Equipment

- 2 DVD players w/8.5" LCD monitors and headphones (bunk area)

## Bath

Laminate countertop

Handheld showerhead

Skylight

Powered roof vent

## Exterior

Automatic entrance door steps

Antenna jack

AC duplex outlet

Storage compartments

Mud flaps

26P	30B	32K
o	o	o
o	o	o
o	o	o

### Optional Equipment

- Patio awning
- Ladder
- Premium high-gloss skin

## Heating & Cooling System

14,800 BTU roof air conditioner (26P & 30B)

Two high-efficiency roof air conditioners (32K)

30,000 BTU, low-profile furnace (26P & 30B)

35,000 BTU, low-profile furnace (32K)

In-floor ducted heat

PowerLine® energy management system (32K)

## Electrical System

AC/DC load center, DC fuses, 120V AC circuit breakers, 45-amp. converter/charger (26P & 30B)

AC/DC electrical distribution system, AC/DC breaker panel, 45-amp. converter/charger w/remote (32K)

30-amp. power cord

4,000-watt Cummins Onan® MicroQuiet™ gas generator (26P & 30B)

5,500-watt Cummins Onan Marquis Gold™ gas generator (32K)

2 deep-cycle, Group 24 batteries

Battery disconnect systems (chassis and coach)

Automatic dual battery charge control

Auxiliary start circuit

26P	30B	32K
o	o	o

### Optional Equipment

- 50-amp. power cord

## Plumbing System

**Service Center:** cable TV input, city water hook-up w/diverter valve, drainage valves, portable satellite dish hookup, power cord

6-gallon water heater

LP tank

TrueLevel™ holding-tank monitoring system

Winterization package w/water heater bypass valve and siphon tube

## Safety

Seat belts

Child seat anchor (forward facing dinette bench)

LP, smoke and carbon monoxide detectors

10 BC fire extinguisher

Ground fault interrupter

High-mount brake light

## Warranty<sup>7</sup>

- 12-month/15,000-mile basic warranty,<sup>8</sup>
- 36-month/36,000-mile limited warranty on structure,<sup>8</sup>
- 10-year limited parts and labor warranty on roof skin<sup>8</sup>

1 The height of each model is measured to the top of the tallest standard feature and is based on the curb weight of a typically equipped unit. The actual height of your vehicle may vary by several inches depending on chassis or equipment variations. Please contact your dealer for further information.

2 Sunstar floorplans feature a wide-body design – over 96" in making your purchase decision, you should be aware that some states restrict access on some or all state roads to 96" in body width. Before making your purchase decision, you should confirm the road usage laws in the states of interest to you.

3 The load capacity of your motor home is designated by weight, not by volume, so you cannot necessarily use all available space when loading your motor home.

4 Capacities are based on measurements prior to tank installation. Slight capacity variations can result due to installation applications.

5 Capacities shown are tank manufacturer's listed water capacity (W.C.). Actual filled LP capacity is 80% of listing due to overfilling prevention device on tank.

6 Actual towing capacity is dependent on your particular loading and towing circumstances which includes the GVWR, GAWR, and GCWR as well as adequate trailer brakes. Please refer to the Operator's Manual of your vehicle for further towing information.

7 See separate chassis warranty.

8 See your dealer for complete warranty information.

o Optional

NA Not Available

Not all items available in combination. See dealer for details.

Winnebago Industries® continuing program of product improvement makes specifications, equipment, model availability, and prices subject to change without notice. Comparisons to other motor homes are based on the most recent information available at printing.

## Exterior Graphics

Upgrade from standard graphics to the deluxe graphics package for a more distinct exterior appearance.

Khaki/Light Gold Metallic/  
Dark Tundra/Crystal Green

Standard Graphics



Light Bronzemetallic

Deluxe Graphics



Bright Platinum Metallic

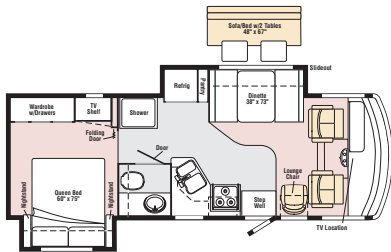
Deluxe Graphics



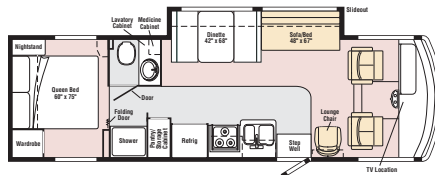
## Sunstar Floorplans

Dimensions shown are for sleeping space only and may vary due to styling differences. Dashed lines denote overhead storage areas. Floorplans and specifications are also available online at: [goitasca.com](http://goitasca.com)

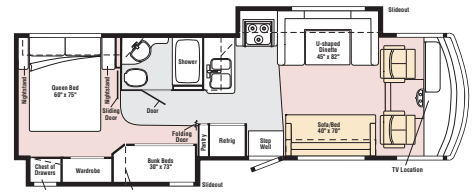
Optional UltraLeather Carpet Vinyl



26P  
new



30B



32K

## Interior Decor

Three fabric collections give you a choice of interiors. The cabinetry comes in a beautiful Sierra Maple finish with satin nickel hardware. Choose UltraLeather™ for a soft leather feel that is extra durable and easy to clean.

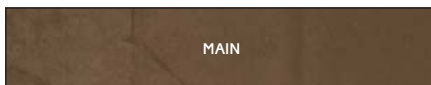
Sierra Maple



Cloudburst

Warm Glow

Nutmeg



## What's on the Web?

Want to see more of the Itasca Sunstar? You'll find more pictures, in-depth info, floorplans, and complete specs at [goitasca.com](http://goitasca.com). You'll also see videos and highlights of key features, such as:

**SMARTSPACE**

**TRUELEVEL**

**SMART STORAGE**

**SUPER  
STRUCTURE**

**POWERLINE**

**ONEPLACE**


Built proudly by



[goitasca.com](http://goitasca.com)

NYSE: WGO



Join the  **ITASCA Family** **ITASCA OWNERS JUST HAVE MORE FUN. WHEN YOU BUY A SUNSTAR YOU CAN BECOME A PART OF THE WINNEBAGO-ITASCA TRAVELERS CLUB. AS A MEMBER, YOU'LL MEET OTHER MOTOR HOME ENTHUSIASTS, TRAVEL TO INTERESTING PLACES WITH INTERESTING PEOPLE, AND BE THE FIRST TO LEARN ABOUT NEW ITASCA PRODUCTS. SEE WHAT THE WIT CLUB IS ALL ABOUT AT [WITCLUB.COM](http://WITCLUB.COM)**



- Join the WIT Club
- Caravans and rallies
- Local and state activities
- RV travel and benefits

For Sales and Service Information Contact:

Seat belts are your most important hookup. Always buckle up.